

O.D.O.T. DISTRICT 2 SURVEY OFFICE (USE ONLY)

PERSONNEL

REFERENCE NO. 103

SHEET 18 OF 23

NOTES RHOADES

DATE 3/1/22

ROUTE SR 2

H.C. O'DONNELL

WEATHER CLOUDY

COUNTY OTTAWA

R.C. AUBLE

TEMP. 44°

TOWNSHIP DANBURY

NIESE

SECTION 4-32

DWG BY RHOADES PID 96755

TYPE MONUMENT CMON W/ 1/2" IPIN

~~ON SURFACE~~ - BELOW 3"

OFFSET \odot PAVEMENT ON LT : RT

- TO - EDGE PAVEMENT

STATION: 1399+67.43

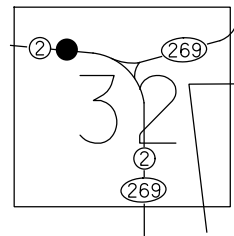
HORZ.DATUM: NAD83 2011

GEOID: NAVD88 2018

GRID: NORTHING: 670207.101

EASTING: 1873199.770

NOTE:
THIS MAP IS FOR ODOT PURPOSES ONLY
TO INDEX REFERENCE TIES, AND DOES NOT
REPRESENT TRUE LAND SUBDIVISION.



RECORD: P.O.T.
STA 556+00
FD CMON
W/1/2" IPIN
3/1/73, SCHNEIDER
FD CMON
W/ 1/2" IPIN
3" DOWN
REF103
3/1/22, JFO

----- \odot W.B. SR 2



----- \odot E.B. SR 2

O.D.O.T. DISTRICT 2 SURVEY OFFICE (USE ONLY)

PERSONNEL _____ REFERENCE NO. 103 SHEET 18 OF 18
 NOTES SCHNEIDER DATE 3/1/73 ROUTE SR 2
 H.C. MOSSER WEATHER FAIR COUNTY OTTAWA
 R.C. BARBOUR TEMP. 50° TOWNSHIP DANBURY
 _____ GEYMAN _____ SECTION 4-32

DWG BY NIESE PID _____

TYPE MONUMENT CMON W/ 1/2" IPIN

ON SURFACE - ~~BELOW~~ _____ ON _____

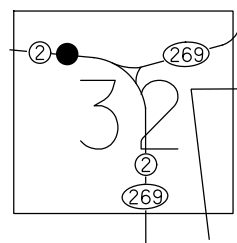
OFFSET \odot PAVEMENT _____ ON _____ LT : RT
 - _____ TO - _____ EDGE PAVEMENT

STATION: 1399+46.40

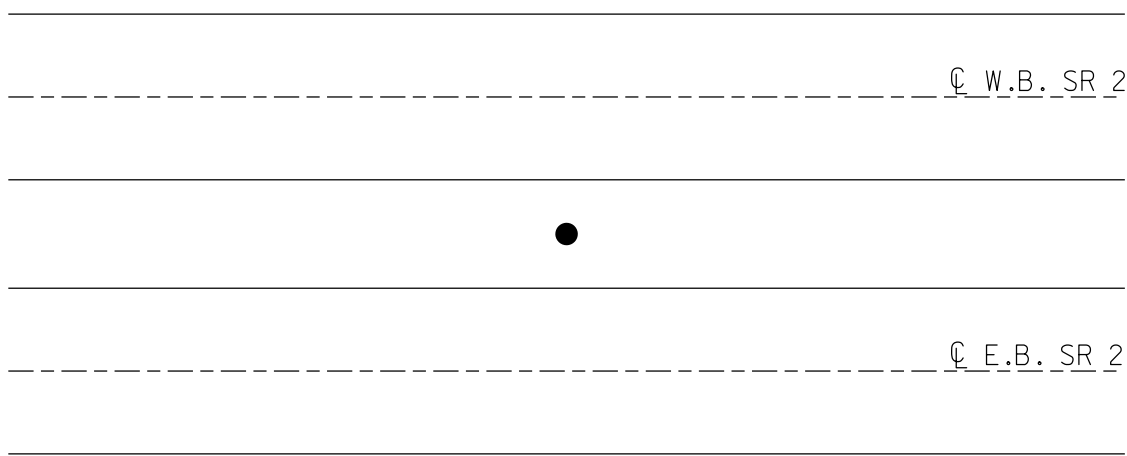
HORIZ.DATUM: _____ GEOID: _____

GRID: NORTHING: _____ EASTING: _____

NOTES:
THIS MAP IS FOR ODOT PURPOSES ONLY
TO INDEX REFERENCE TIES, AND DOES NOT
REPRESENT TRUE LAND SUBDIVISION.



RECORD: P.O.T.
 STA 556+00
 FD CMON
 W/1/2" IPIN
 3/1/73, SCHNEIDER



PERSONNEL TITLE PERSONNEL TITLE

COUNTY Ottawa DATE 3-1-73

S. R. 2 WEATHER Fair

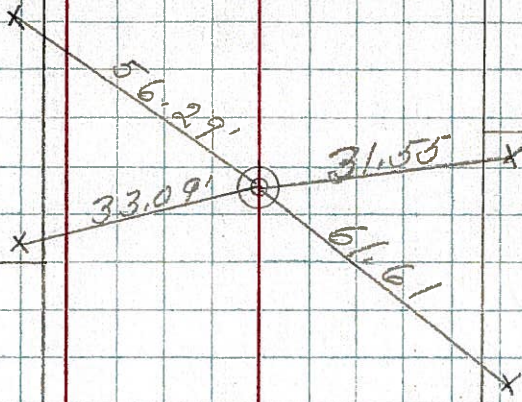
SEC. 23.43 TEMP. 50°

DESCRIPTION Portage and Danbury Twp. JOB NO.

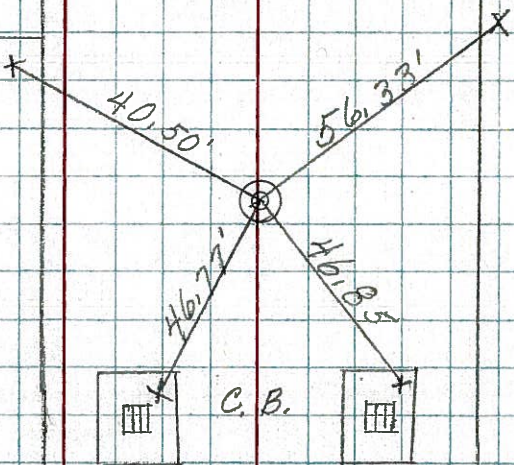
LEFT CENTER LINE RIGHT



P.O.T.
556+00
1/2" Rod in
Conc.
Sec 1 Danbury Twp.



P.O.T.
549+00
1/2" Rod in
Conc.
Sec 1 Danbury Twp.



East Bound

West Bound

P.O.T.
545+00
1/2" Rod in
Conc.
Sec 1 Portage Twp.

