

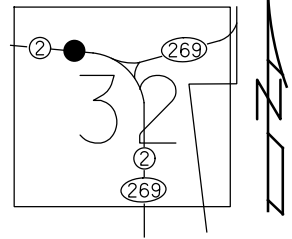
O.D.O.T. DISTRICT 2 SURVEY OFFICE (USE ONLY)

PERSONNEL _____ REFERENCE NO. 105 SHEET 20 OF 23
NOTES RHOADES DATE 3/1/22 ROUTE SR 2
H.C. O'DONNELL WEATHER CLOUDY COUNTY OTTAWA
R.C. AUBLE TEMP. 44° TOWNSHIP DANBURY
NIESE SECTION 4-32
DWG BY RHOADES PID 96755

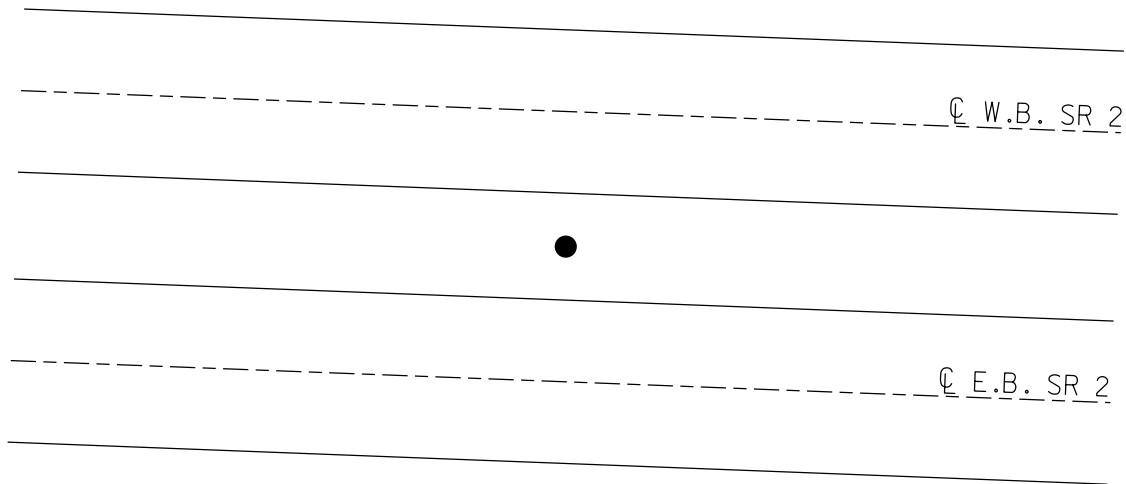
TYPE MONUMENT CMON W/ 1/2" IPIN
~~ON SURFACE~~ - BELOW 4"
OFFSET $\text{\textcircled{C}}$ PAVEMENT ON LT : RT
- TO - EDGE PAVEMENT
STATION: 1404+73.29

HORIZ.DATUM: NAD83 2011 GEOID: NAVD88 2018
GRID: NORTHING: 670197.534 EASTING: 1873705.670

NOTE:
THIS MAP IS FOR ODOT PURPOSES ONLY.
TO INDEX REFERENCE TIES, AND DOES NOT
REPRESENT TRUE LAND SUBDIVISION.



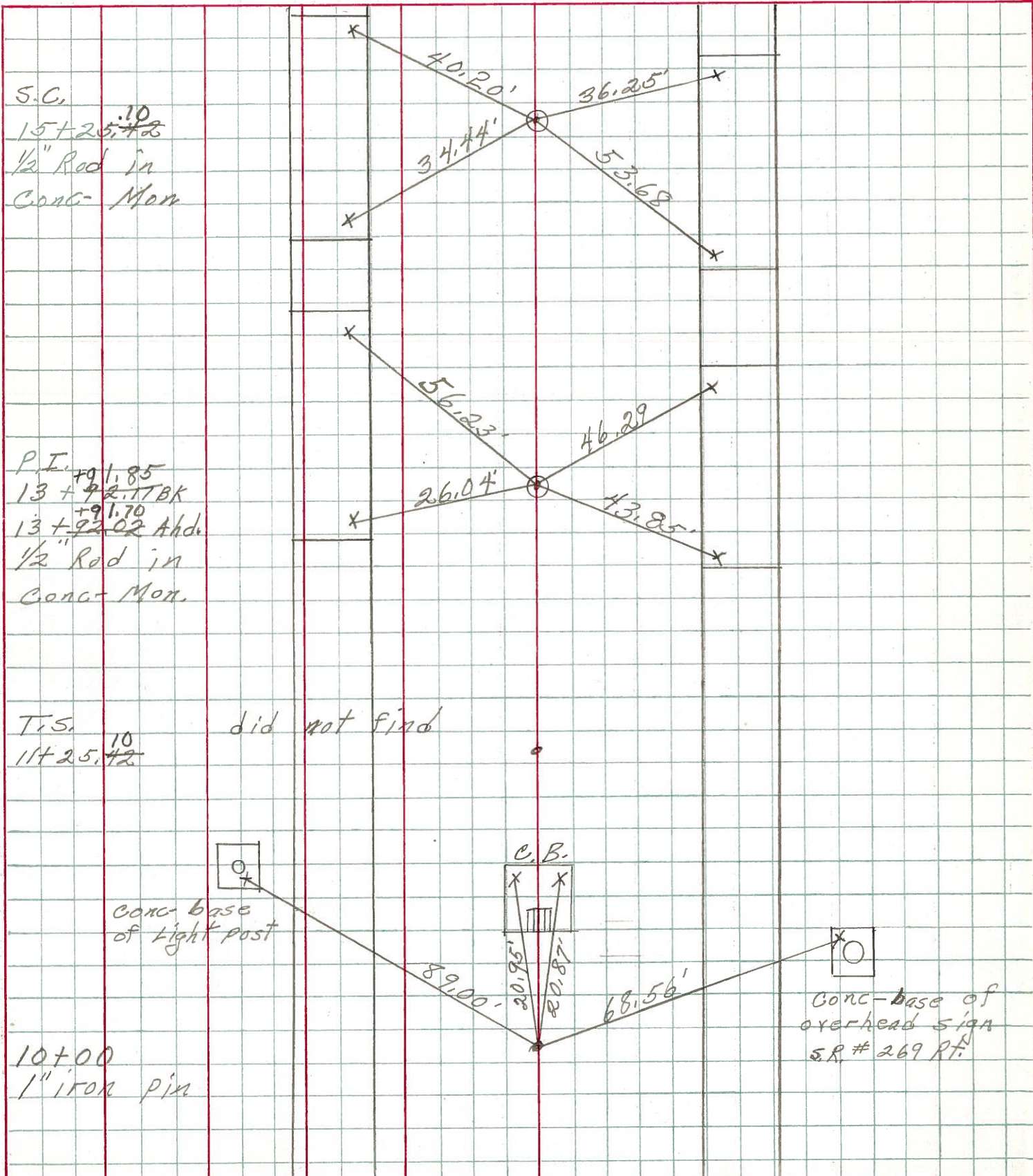
RECORD: P.I.
STA 13+91.85
FD CMON
W/1/2" IPIN
3/6/73, SCHNEIDER
FD CMON
W/ 1/2" IPIN
4" DOWN
REF105
3/1/22, JFO



PERSONNEL TITLE PERSONNEL TITLE
 Schneider _____
 Mosser _____
 Barbour _____
 Geyman _____

COUNTY Ottawa DATE 3-6-73
 S. R. 2 WEATHER Fair
 SEC. 26.60 TEMP. 65°

DESCRIPTION Sec 17 Danbury Twp. JOB NO. _____
 LEFT CENTER LINE RIGHT



S.C.
 15+25.10
 1/2" Rod in
 Conc. Mon

P.I. +91.85
 13+92.17 BK
 +91.70
 13+92.02 Ahd.
 1/2" Rod in
 Conc. Mon.

T.S. did not find
 11+25.42

10+00
 1" iron pin

Conc. base
 of light post

C.B.

Conc. base of
 overhead sign
 S.R. # 269 Rt.

40.20'

36.25'

34.44'

53.68'

56.23'

46.29'

26.04'

43.85'

89.00'

20.95'

20.87'

68.56'