

#4007

For any Questions Please Contact ODOT District 2 Real estate at 419-353-8131

STATE OF OHIO  
 DEPARTMENT OF HIGHWAYS  
 OTT-19-(3.31-3.52)  
 OTTAWA COUNTY  
 SALEM TOWNSHIP  
 VILLAGE OF OAK HARBOR

FED. RD DIVISION	STATE	PROJECT	TYPE FUNDS
2	OHIO	H.I.	1957

OTTAWA COUNTY  
 OTT-19- (3.31-3.52)

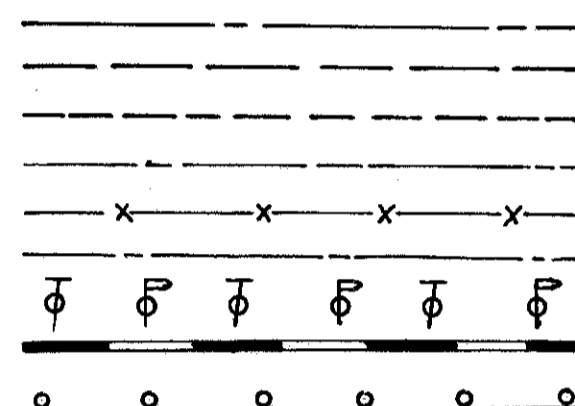
18

408

CONVENTIONAL

- COUNTY LINE
- TOWNSHIP LINE
- SECTION LINE
- CORPORATION LINE
- FENCE LINE
- CENTER LINE
- POLE LINE
- RAILROAD
- GUARD RAIL (EXISTING)

SIGNS

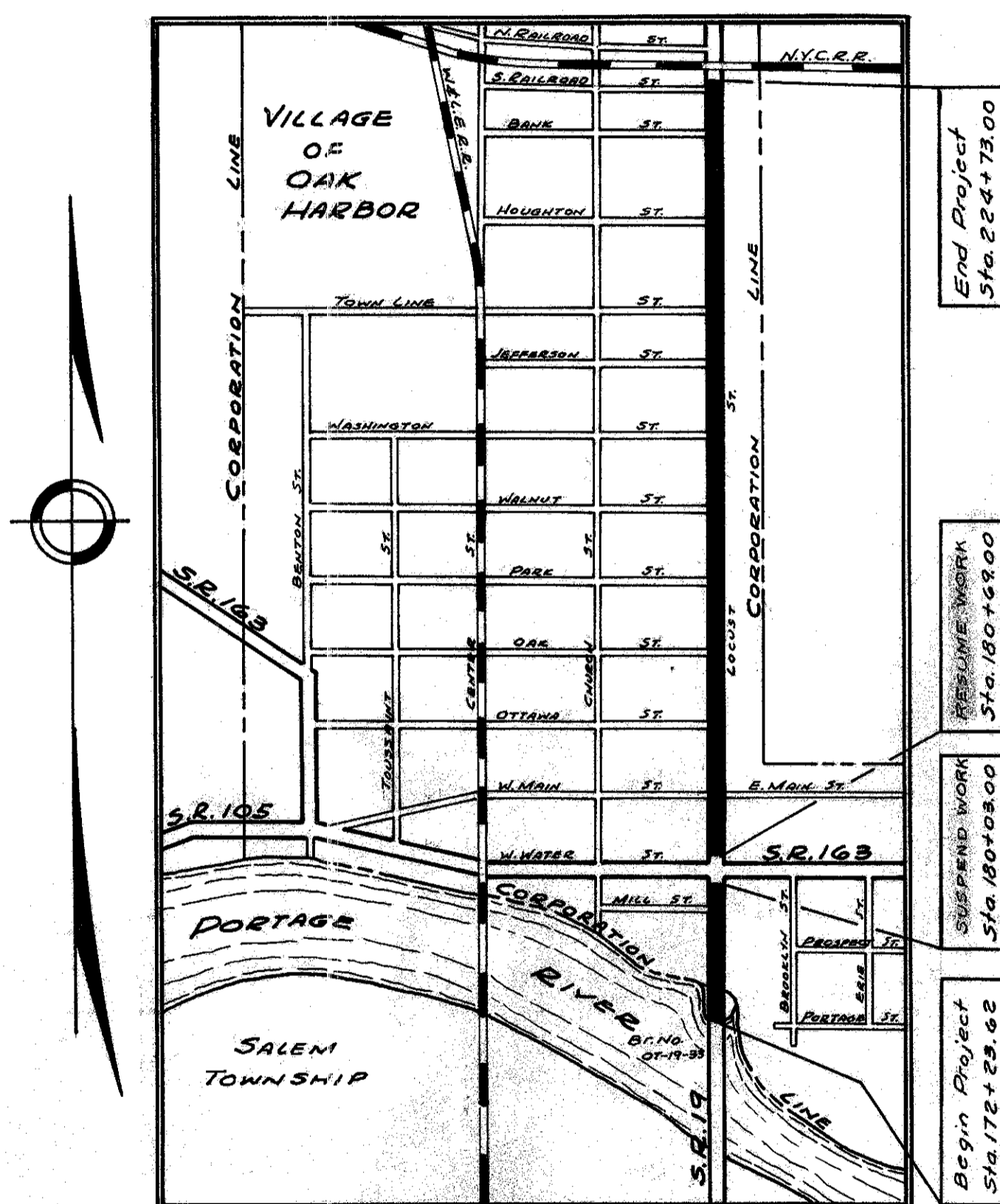


INDEX OF SHEETS

TITLE SHEET	1
TYPICAL SECTIONS	2
TABLES	3&4
GENERAL NOTES	4
PAVEMENT COMPUTATIONS	4
GENERAL SUMMARY	4
PLAN AND PROFILE	5-8

LINE DATA

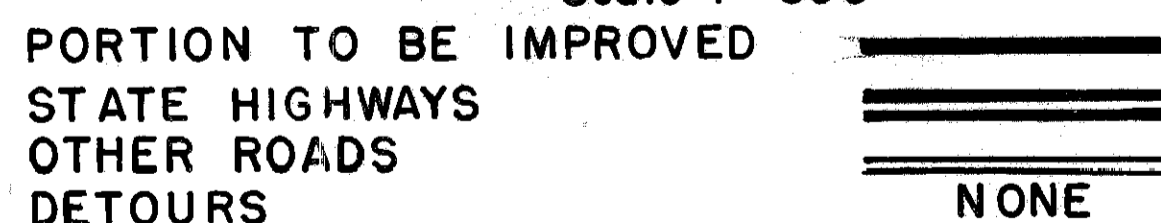
BEGIN PROJECT AND WORK STA. 172+23.62  
 VILLAGE OF OAK HARBOR SOUTH CORPORATION LINE STA. 173+89.13  
 NET LENGTH=165.51 LIN. FT. (RURAL)  
 VILLAGE OF OAK HARBOR SOUTH CORPORATION LINE STA. 173+89.13  
 SUSPEND WORK STA. 180+03.00  
 LENGTH = 613.87 Lin. Ft. (Municipal)  
 RESUME WORK STA. 180+69.00  
 END PROJECT AND WORK STA. 224+73.00  
 LENGTH= 4404.00 LIN. FT. (MUNICIPAL)  
 TOTAL NET LENGTH RURAL= 165.51 LIN. FT. OR 0.031 MILES  
 TOTAL NET LENGTH MUNICIPAL= 613.87+ 4404.00= 5017.87 LIN. FT. OR 0.950 MI.  
 TOTAL NET LENGTH OF PROJECT AND WORK = 165.51+5017.87 = 5183.38 LIN. FT. OR 0.981 MI.



DELIVERY POINT-OAK HARBOR AVERAGE HAUL 1/2-MI.

LOCATION PLAN

Scale 1"=800'



SCALES

PLAN 1"=50'  
 PROFILE HORIZONTAL 1"=50'  
 PROFILE VERTICAL 1"=5'

The Standard Specifications of the State of Ohio, Department of Highways, including changes and Supplemental Specifications listed in the proposal Shall Govern this Project.

The Right of way necessary for this improvement will be provided by the State of Ohio.

I hereby approve these plans and declare that the making of this improvement will not require the closing to Traffic of the Highway, and that provisions for the Maintenance and Safety of Traffic will be as set forth on the plans and estimates.

Approved: George W. Fisher  
 Date: 7-5-50 Division Deputy Director

Approved: C. W. M. Coughlin  
 Date: 7/1/50 Chief Engineer, Bureau of Maintenance

Approved: \_\_\_\_\_  
 Date: \_\_\_\_\_ Chief Engineer, Bureau of Bridges & R.R. Crossings

Approved: K. L. Patterson  
 Date: 8-2-50 Chief Engineer, Bureau of Location & Design

Approved: V. F. Schaeffer  
 Date: 8-2-50 First Asst. Director & Chief Engineer

Approved: W. J. Miller  
 Date: 8-2-50 Director of Highways

408

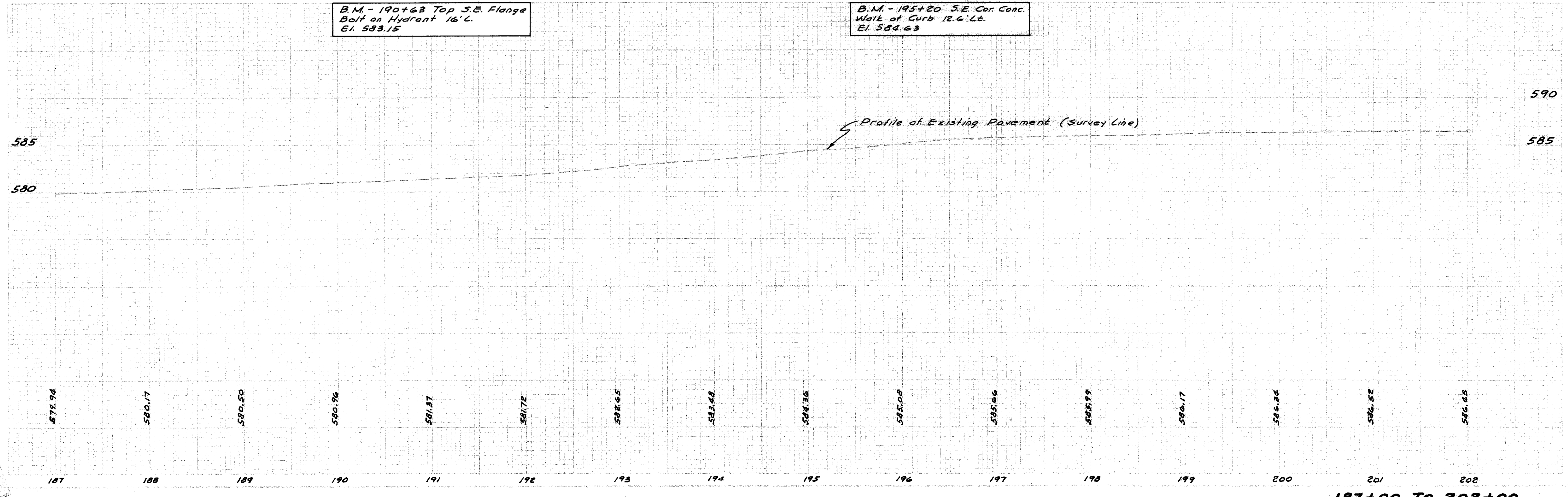
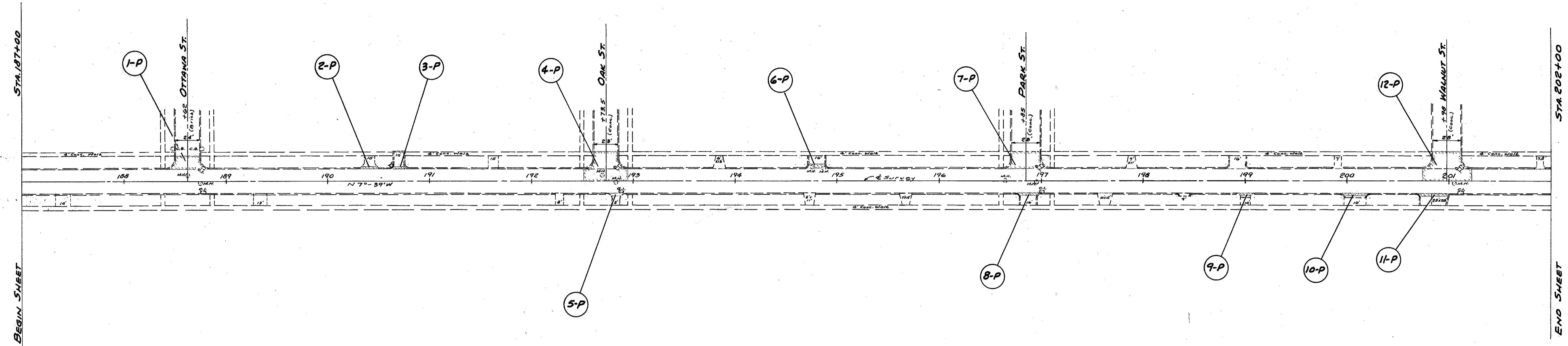
FILE No.	OTTAWA COUNTY
	SEC. OTT-19-(3.31-3.52)
	DATE OF LETTING _____
	CONTRACT No. _____

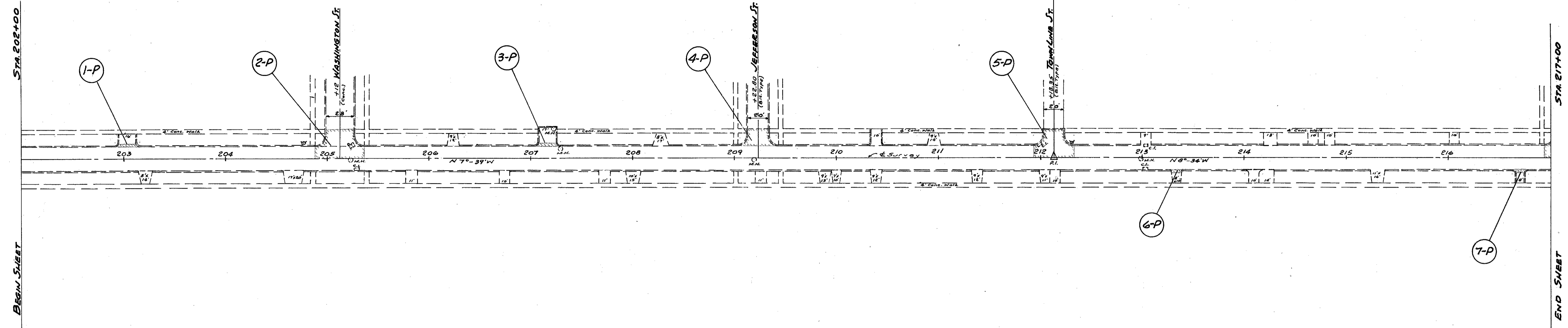
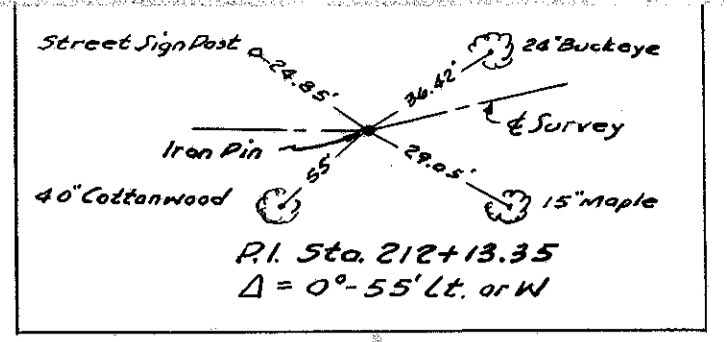
SUPPLEMENTAL SPECIFICATIONS		STANDARD DRAWINGS	
31	6-13-49	I-12	3-15-48
5	5-28-48		

CONSTRUCTION BUREAU  
 JUL 7 1955  
 GROUND PHOTOLAB



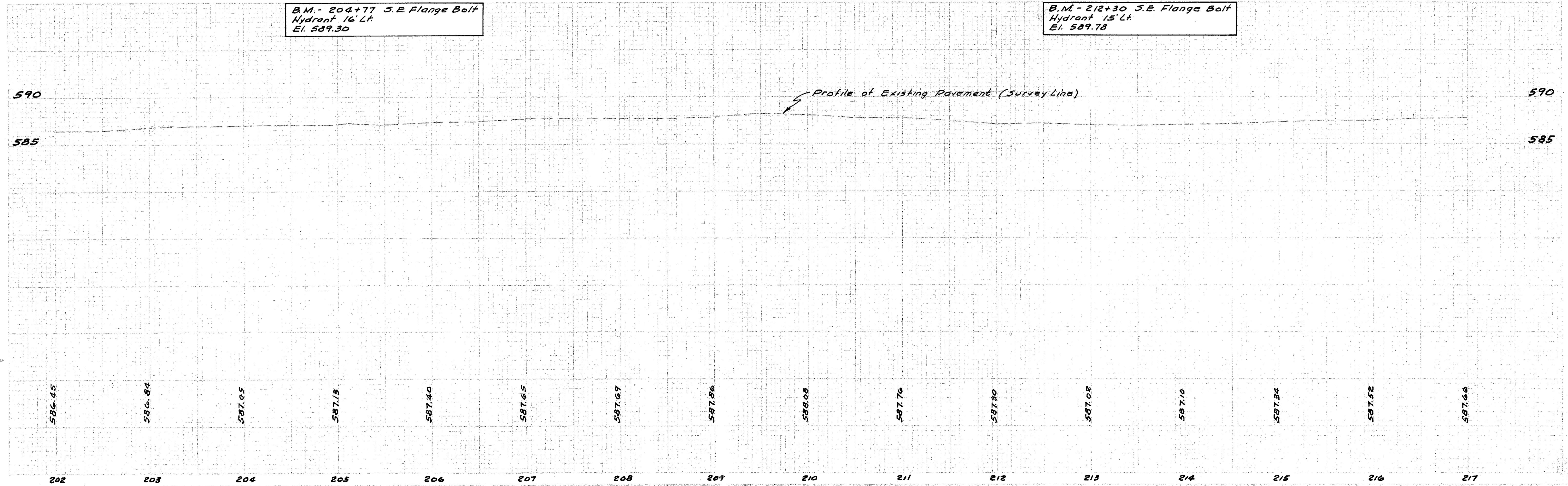
OTTAWA COUNTY  
OTT-19-(3.31-3.52)

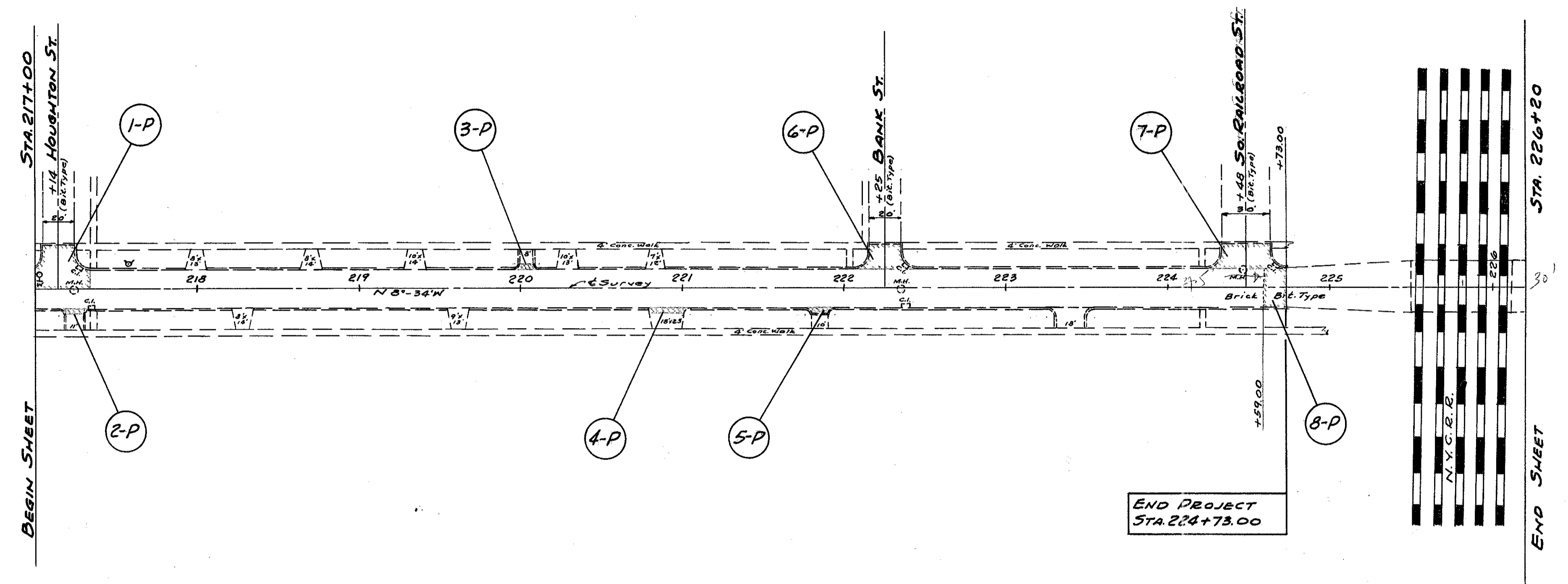




B.M. - 204+77 S.E. Flange Bolt  
Hydrant 16' Lt.  
El. 589.30

B.M. - 212+30 S.E. Flange Bolt  
Hydrant 15' Lt.  
El. 589.78

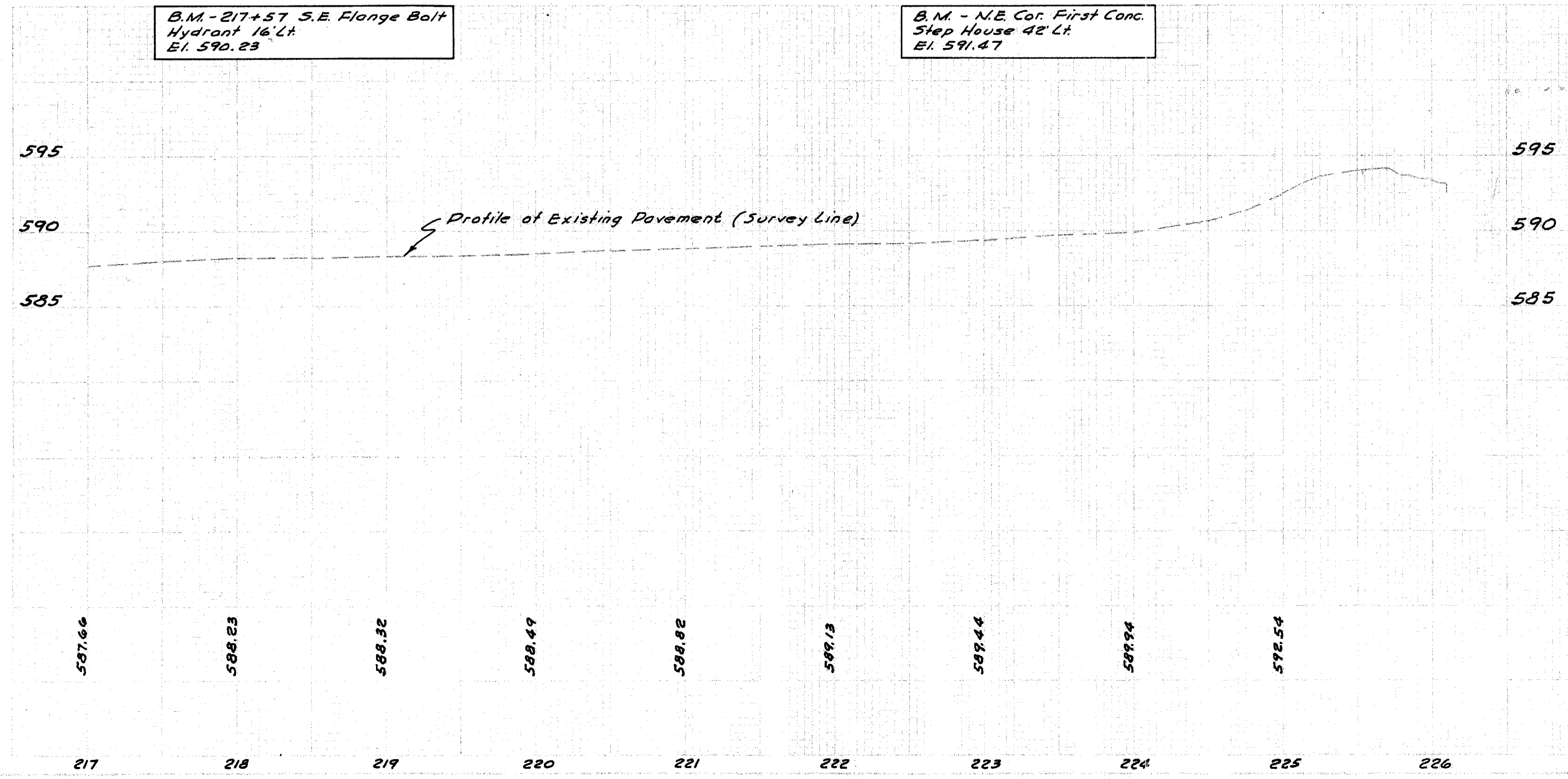




TYPICAL SECTION OF ADJOINING PAVEMENT  
2 1/2" Bituminous Concrete Wearing Course on  
Brick on Concrete Base.

B.M. - 217+57 S.E. Flange Bolt  
Hydrant 16' Lt.  
El. 590.23

B.M. - N.E. Cor. First Conc.  
Step House 42' Lt.  
El. 591.47



DATE 01-25-10  
ON HARBOUR (01) 1021 GRASS 124-4  
011-25-10