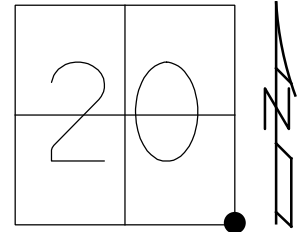


O.D.O.T. DISTRICT 2 SURVEY OFFICE (USE ONLY)

PERSONNEL \_\_\_\_\_ REFERENCE NO. 1 SHEET 1 OF 23  
 NOTES LEU DATE 8/7/14 ROUTE SR 19  
 H.C. WESTFALL WEATHER SUNNY COUNTY OTTAWA  
 R.C. ALLEN TEMP. 72° TOWNSHIP SALEM  
RHOADES  
 DWG BY AUBLE PID 107060 SECTION 20  
 T 6 N R 15 E

TYPE MONUMENT MONBOX W/1" IPIN  
~~ON SURFACE~~ - BELOW ON  
 OFFSET  $\odot$  PAVEMENT 6' LT : ~~RT~~  
- TO - EDGE PAVEMENT 10.1' S. OF  $\odot$  LT  
 STATION: 0+00

HORZ. DATUM: NAD83 (2011) GEOID: 2012A  
 GRID: NORTHING: 653186.782 EASTING: 1791743.928



RECORD:  
 STONE FD IN 1873,  
 E. FRANCK  
 SEC.20 S.E.COR.  
 SEC.21 S.W.COR.

NOTE: SAN 19 REF 25

NOTE:  
 FD P.K./WASHER ON  $\odot$   
 REF 1A, P.I.

FD P.K./WASHER, ON SURFACE  
 GPS, REF 1  
 NORTHING: 653186.601  
 EASTING: 1791743.645

FD R.R.SPIKE, 3" DOWN  
 GPS, REFA1

FD R.R.SPIKE, 4 7/8" DOWN  
 GPS, REFB1

FD 3/4" IPIN, 8 1/4" DOWN  
 GPS, REFC1  
 BRICK ROAD, PICTURE #430

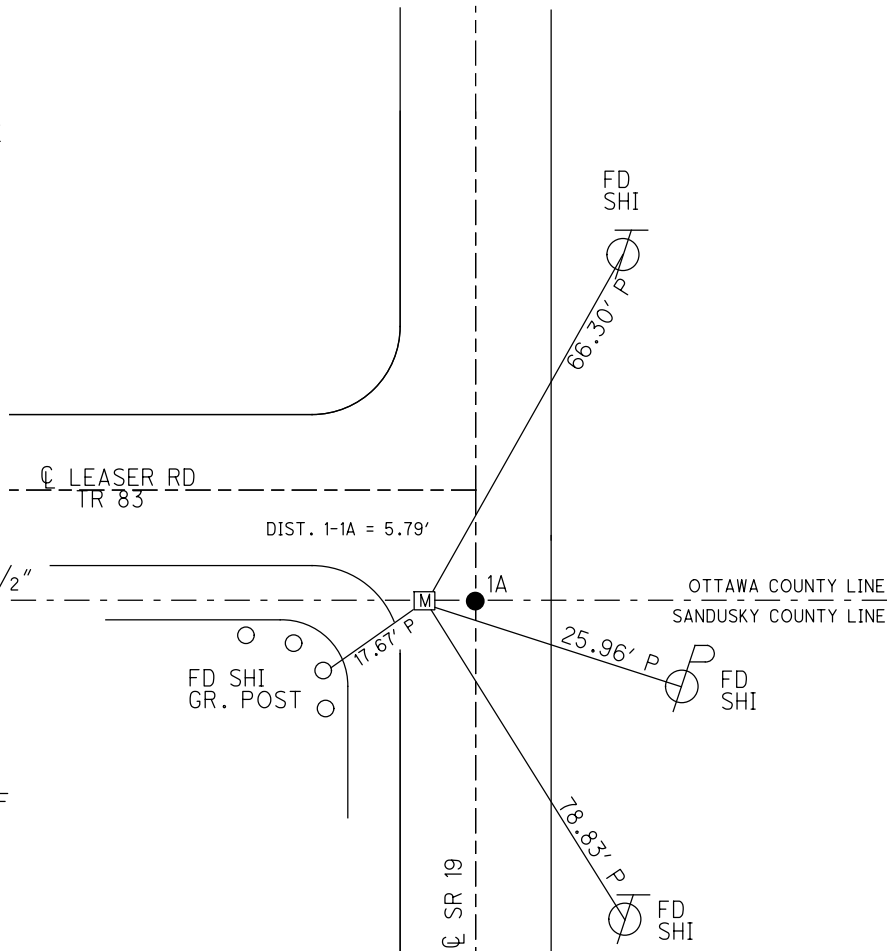
FD 1 1/2" IPIPE, 21 1/2" DOWN  
 GPS, REFD1  
 BENT SOUTHEASTERLY.  
 PICTURE #431

FD STONE, 27" DOWN. 7X3X4 1/2"  
 GPS, REFE1  
 PICTURE #432-434

08-05-2014 EBW, JLL, JBT &  
 JEFF FROM OTT. CO.

UNCOVERED STONE, MARKED  
 HIGH POINT FROM TIES, SHOT  
 HIGH POINT WITH GPS PLACED  
 IRON PIN OVER HIGH POINT OF  
 STONE WITH COORDINATES.

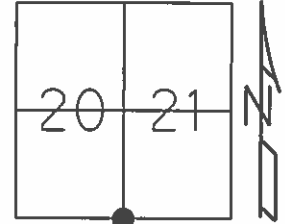
MON.BOX SET  
 GPS, FINREF1  
 8/7/14, EBW  
 FD MONBOX  
 3/19/19, JFO  
 FD MONBOX  
 8/22/19, JMR



O.D.O.T. DISTRICT 2 SURVEY OFFICE (USE ONLY)

PERSONNEL \_\_\_\_\_ REFERENCE NO. 1 SHEET 1 OF 23  
 NOTES LEU DATE 08/07/14 ROUTE SR 19  
 H.C. WESTFALL WEATHER SUNNY COUNTY OTTAWA  
 R.C. ALLEN (OTT. CO.) TEMP. 72° TOWNSHIP SALEM  
RHOADES SECTION 20,21  
 T 6 N R 15 E

TYPE MONUMENT MONBOX WITH 1" IRON PIN  
 ON SURFACE - ~~BELOW~~ \_\_\_\_\_  
 LEFT - ☉ PAV'T - ~~RIGHT~~ 6', 10.1' S. OF ☉ TR 83  
 \_\_\_\_\_ TO \_\_\_\_\_ EDGE PAVEMENT  
 S.L.M. 0+00  
 GRID: NORTHING: 653186.782 EASTING: 1791743.928



RECORD:  
 STONE FD IN 1873,  
 E. FRANCK  
 SEC.20 S.E.COR.  
 SEC.21 S.W.COR.

NOTE:  
 FD P.K./WASHER ON ☉  
 REF 1A, P.I.

FD P.K./WASHER, ON SURFACE  
 GPS, REF 1  
 NORTHING: 653186.601  
 EASTING: 1791743.645

FD R.R.SPIKE, 3" DOWN  
 GPS, REFA1

FD R.R.SPIKE, 4 7/8" DOWN  
 GPS, REFB1

FD 3/4" IPIN, 8 1/4" DOWN  
 GPS, REFC1  
 BRICK ROAD, PICTURE #430

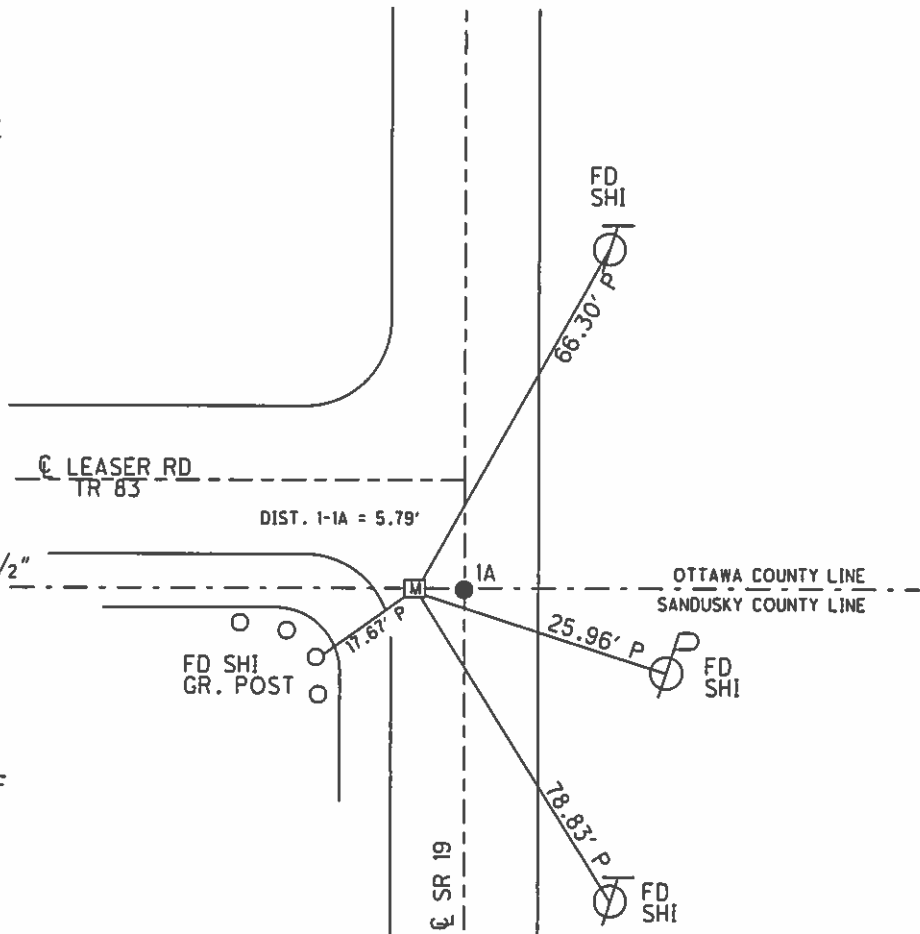
FD 1 1/2" IPIPE, 21 1/2" DOWN  
 GPS, REFD1  
 BENT SOUTHEASTERLY.  
 PICTURE #431

FD STONE, 27" DOWN. 7X3X4 1/2"  
 GPS, REFE1  
 PICTURE #432-434

08-05-2014 EBW, JLL, JBT &  
 JEFF FROM OTT. CO.

UNCOVERED STONE, MARKED  
 HIGH POINT FROM TIES, SHOT  
 HIGH POINT WITH GPS PLACED  
 IRON PIN OVER HIGH POINT OF  
 STONE WITH COORDINATES.

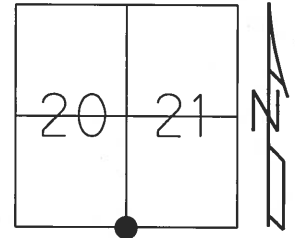
MON.BOX SET  
 GPS, FINREF1  
 8/7/14, EBW



O.D.O.T. DISTRICT 2 SURVEY OFFICE (USE ONLY)

PERSONNEL	REFERENCE NO. <u>1</u>	SHEET <u>    </u> OF <u>    </u>
NOTES <u>RHOADES</u>	DATE <u>10/28/13</u>	ROUTE <u>SR 19</u>
H.C. <u>WESTFALL</u>	WEATHER <u>FAIR</u>	COUNTY <u>OTTAWA</u>
R.C. <u>ROUSOS</u>	TEMP. <u>33°</u>	TOWNSHIP <u>SALEM</u>
<u>LEU</u>		SECTION <u>20,21</u>
		T <u>6</u> N R <u>15</u> E

TYPE MONUMENT STONE  
~~ON SURFACE~~ - BELOW 27"  
 LEFT - ☉ PAV'T - ~~RIGHT~~ 6', 10.1' S. OF ☉ TR 83  
     - TO - EDGE PAVEMENT  
 S.L.M. 0+00  
 Grid: Northing: 653186.77 Easting: 1791743.94



FD P.K./WASHER, ON SURFACE  
 GPS, REF1  
 NORTHING: 653186.601  
 EASTING: 1791743.645

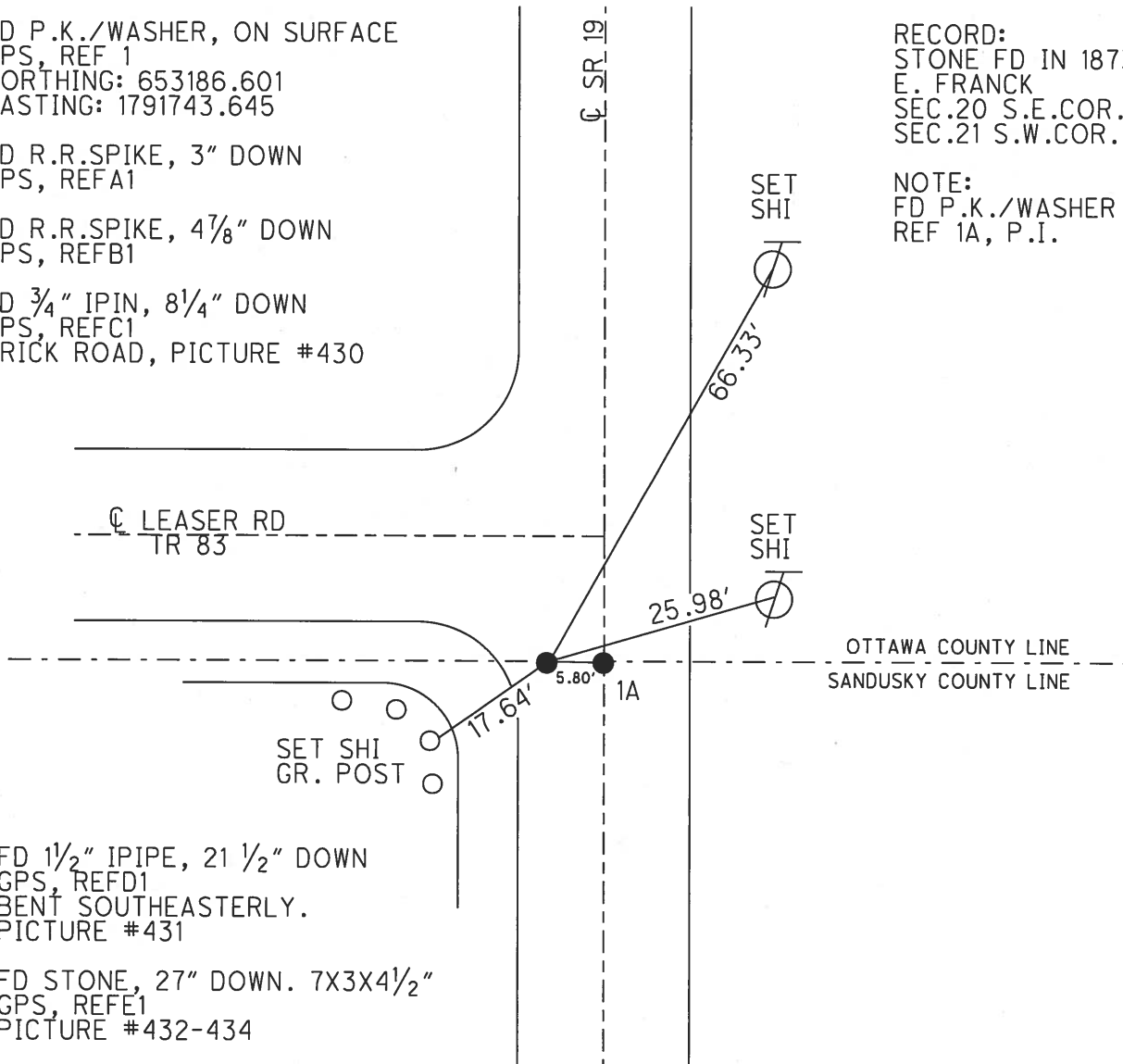
FD R.R.SPIKE, 3" DOWN  
 GPS, REFA1

FD R.R.SPIKE, 4 7/8" DOWN  
 GPS, REFB1

FD 3/4" IPIN, 8 1/4" DOWN  
 GPS, REFC1  
 BRICK ROAD, PICTURE #430

RECORD:  
 STONE FD IN 1873,  
 E. FRANCK  
 SEC.20 S.E.COR.  
 SEC.21 S.W.COR.

NOTE:  
 FD P.K./WASHER ON ☉  
 REF 1A, P.I.



FD 1 1/2" IPIPE, 21 1/2" DOWN  
 GPS, REFD1  
 BENT SOUTHEASTERLY.  
 PICTURE #431

FD STONE, 27" DOWN. 7X3X4 1/2"  
 GPS, REFE1  
 PICTURE #432-434

SET SHI  
 GR. POST

O.D.O.T. DISTRICT 2 SURVEY OFFICE (USE ONLY)

PERSONNEL \_\_\_\_\_

REFERENCE NO. \_\_\_\_\_

SHEET 11 OF 12

NOTES CANTERBURY

DATE 05-07-07

ROUTE SR 19

H.C. HOMAN

WEATHER SUNNY

COUNTY SANDUSKY

R.C. SAPP

TEMP. +60°

TOWNSHIP RICE

SECTION 29

T 6 N R 15 E

TYPE MONUMENT FD. R.R. SPIKE

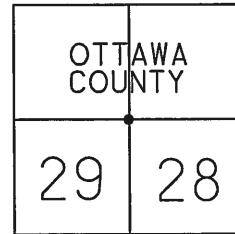
~~ON SURFACE~~ - BELOW 3" DOWN

LEFT - C PAV'T - RIGHT 6' LT.

4.8' TO LT. EDGE PAVEMENT

S.L.M. (SV14)

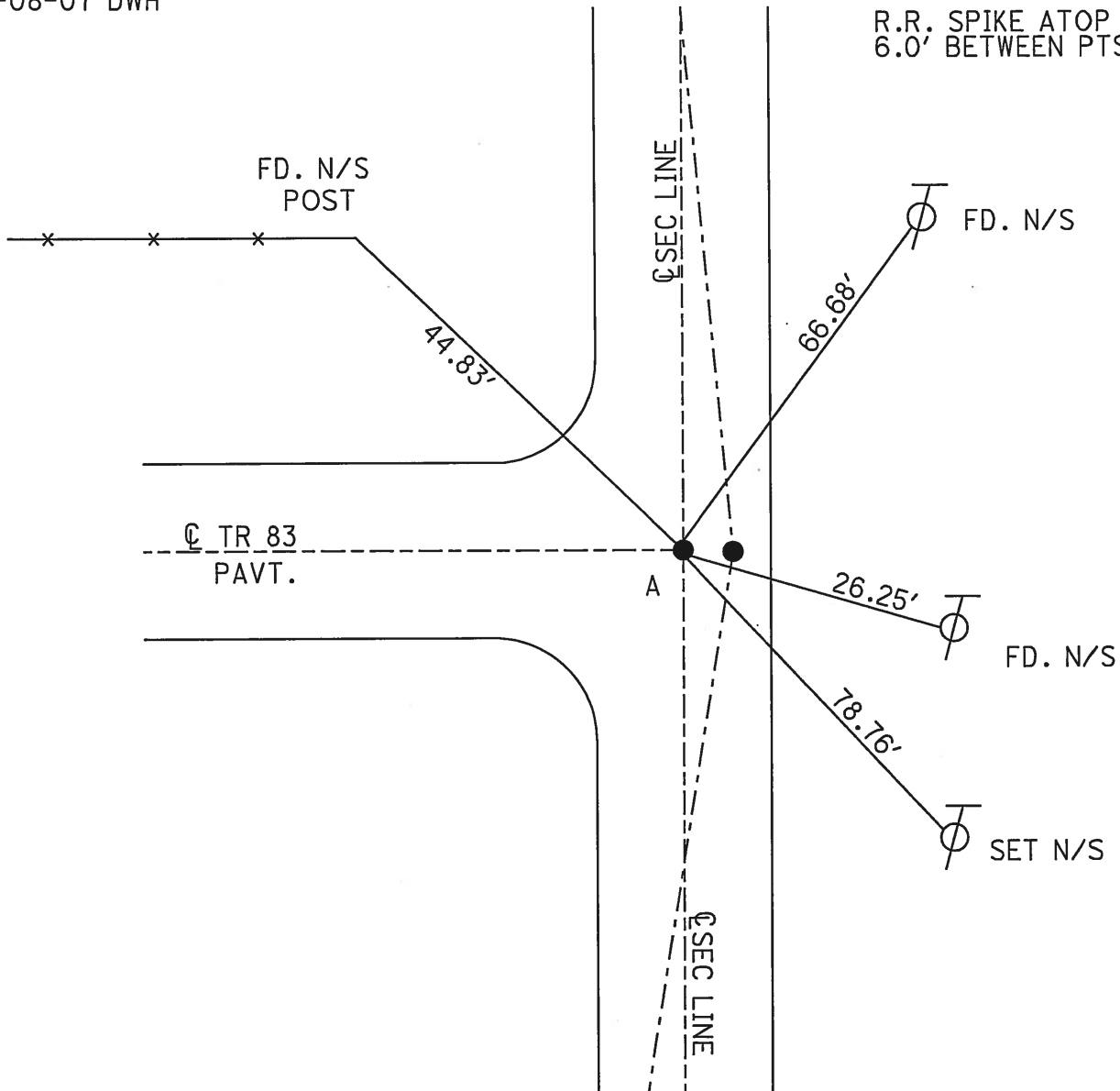
GPS Northing: 653186.604 Easting: 1791743.619



A=SET MAG/WASHER  
11-08-07 DWH

NOTE: 10.4' SOUTH OF CL TR. 83

R.R. SPIKE ATOP STONE  
6.0' BETWEEN PTS.



# O.D.O.T. DISTRICT 2 SURVEY OFFICE

PERSONNEL \_\_\_\_\_

REFERENCE NO. 1E/A SHEET 1 OF \_\_\_\_\_

NOTES Cronin

H.C. Barbour

R.C. Geyman

DATE 8/08/88

WEATHER sunny

TEMP. 80°

ROUTE #19

COUNTY Ottawa

TOWNSHIP Salem

SECTION 20, 21, 28, 29

T 6 N R 15 E

TYPE MONUMENT R.R. spikes

ON SURFACE - BELOW \_\_\_\_\_

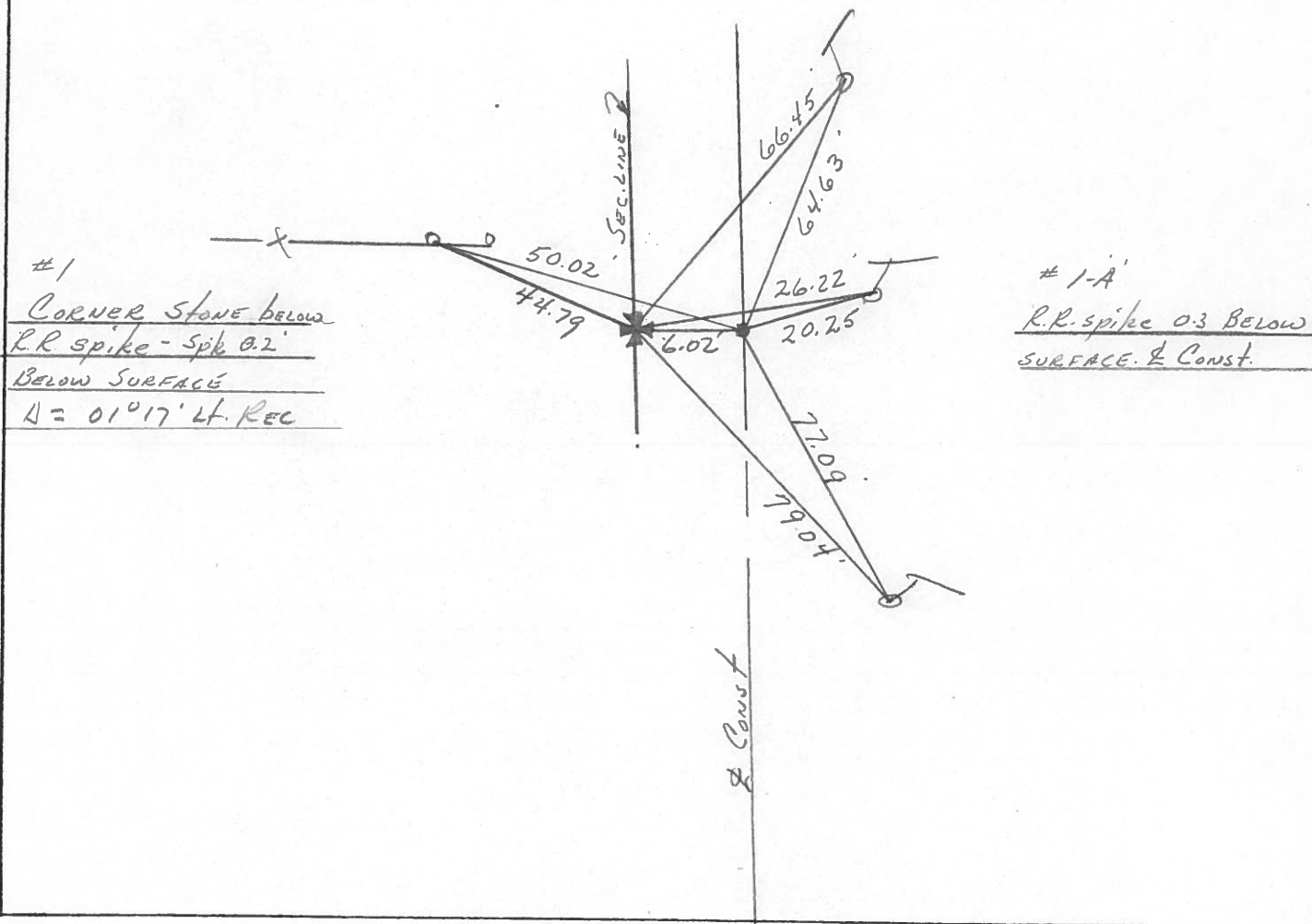
LEFT-CL PAV'T. - RIGHT 6.0'

TO \_\_\_\_\_ EDGE PAVEMENT

S.L.M. 0+00 (PLAN ICH-280-SECA-2 (1924))

Ottawa  
Sandusky

20	21
29	28



#1  
CORNER STONE BELOW  
R.R. SPIKE - SPK 0.2'  
BELOW SURFACE  
 $\Delta = 01^{\circ} 17' \text{ Lt. REC}$

#1-A  
R.R. SPIKE 0.3 BELOW  
SURFACE & CONST.

County OTTAWA S.R. 19

Date 7-23-81

Township SALEM

Weather clear

Section 20, 21

Temp. +75°

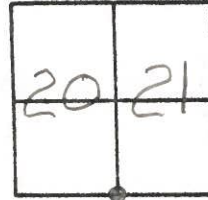
T&N, RISE

Personnel HOFFMAN

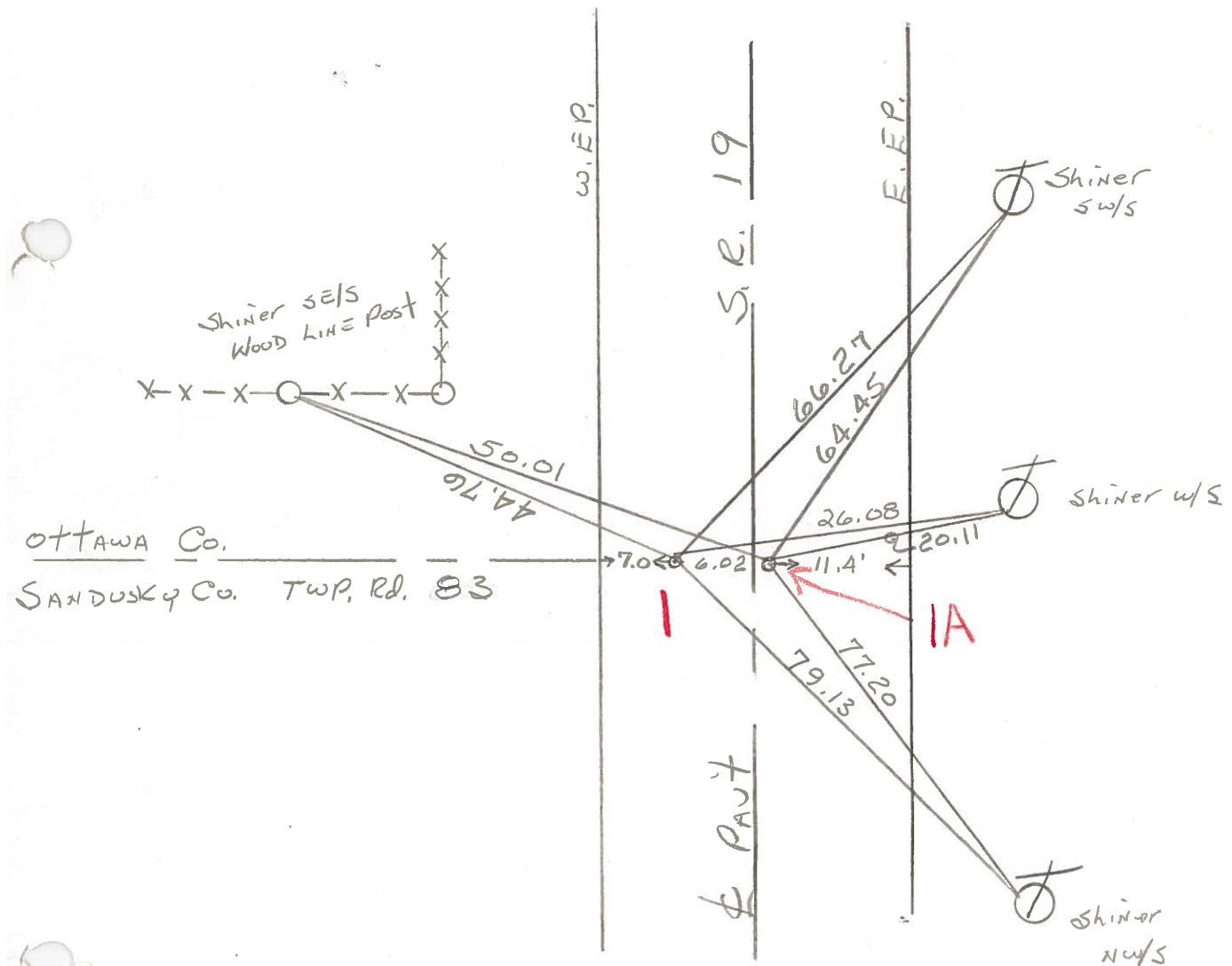
Loehrke

Householder

#1



Set P.K. Nails @ Both points



STA. 0+00

PERSONNEL TITLE PERSONNEL TITLE

Schneider  
 Mosser  
 Barbour  
 Geyman

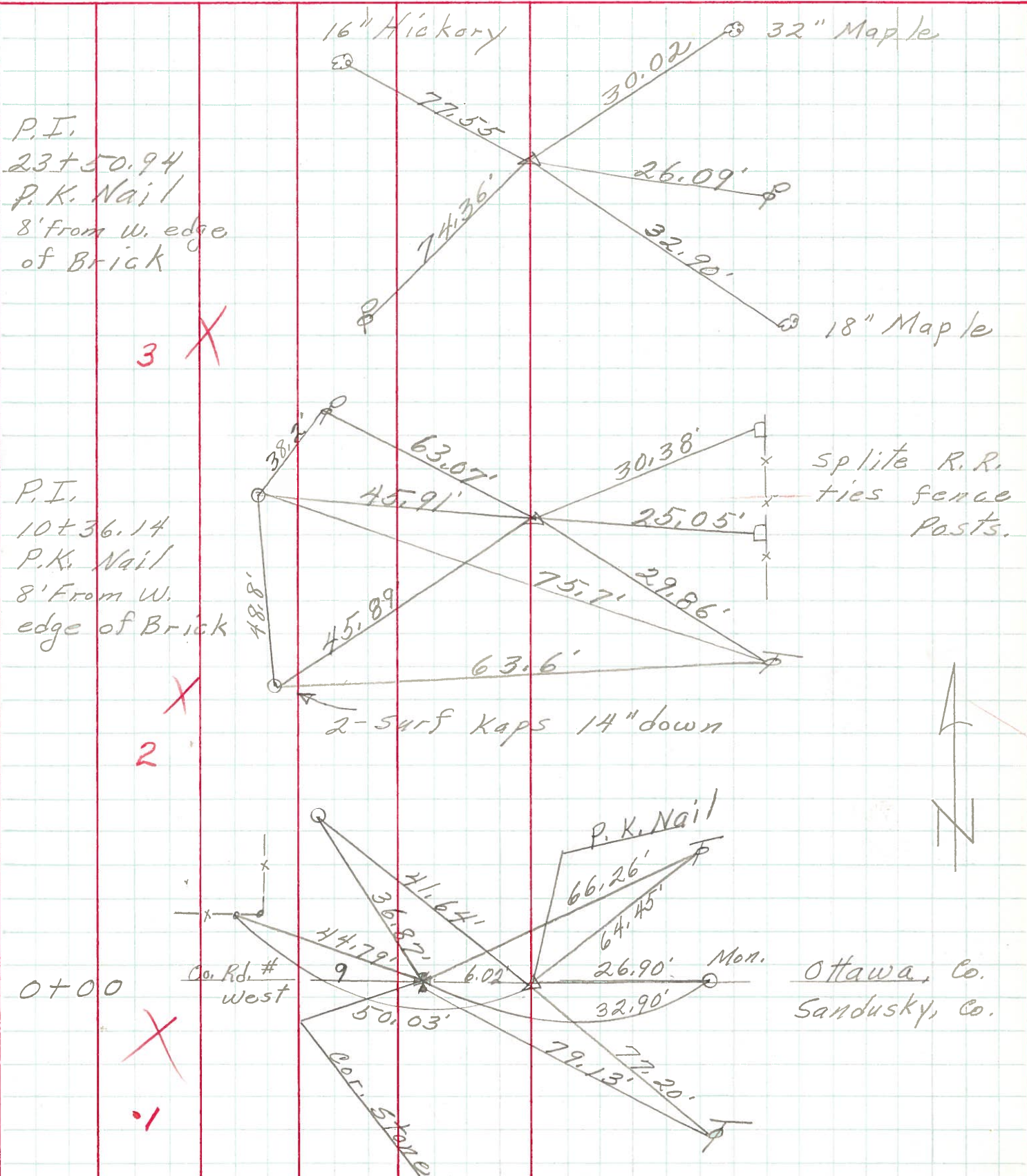
COUNTY Ottawa DATE 5-4-71

S. R. 19 WEATHER

SEC. 20 & 21 TEMP.

DESCRIPTION Sandusky, Co. Line to Oak Harbor JOB NO.

LEFT CENTER LINE RIGHT



P.I.  
 23+50.94  
 P.K. Nail  
 8' From W. edge  
 of Brick

3 X

P.I.  
 10+36.14  
 P.K. Nail  
 8' From W.  
 edge of Brick

2 X

0+00

X  
 1

split R.R.  
 ties fence  
 posts.

2-surf kapp 14" down

P.K. Nail

Co. Rd. #  
 9  
 West

Ottawa, Co.  
 Sandusky, Co.

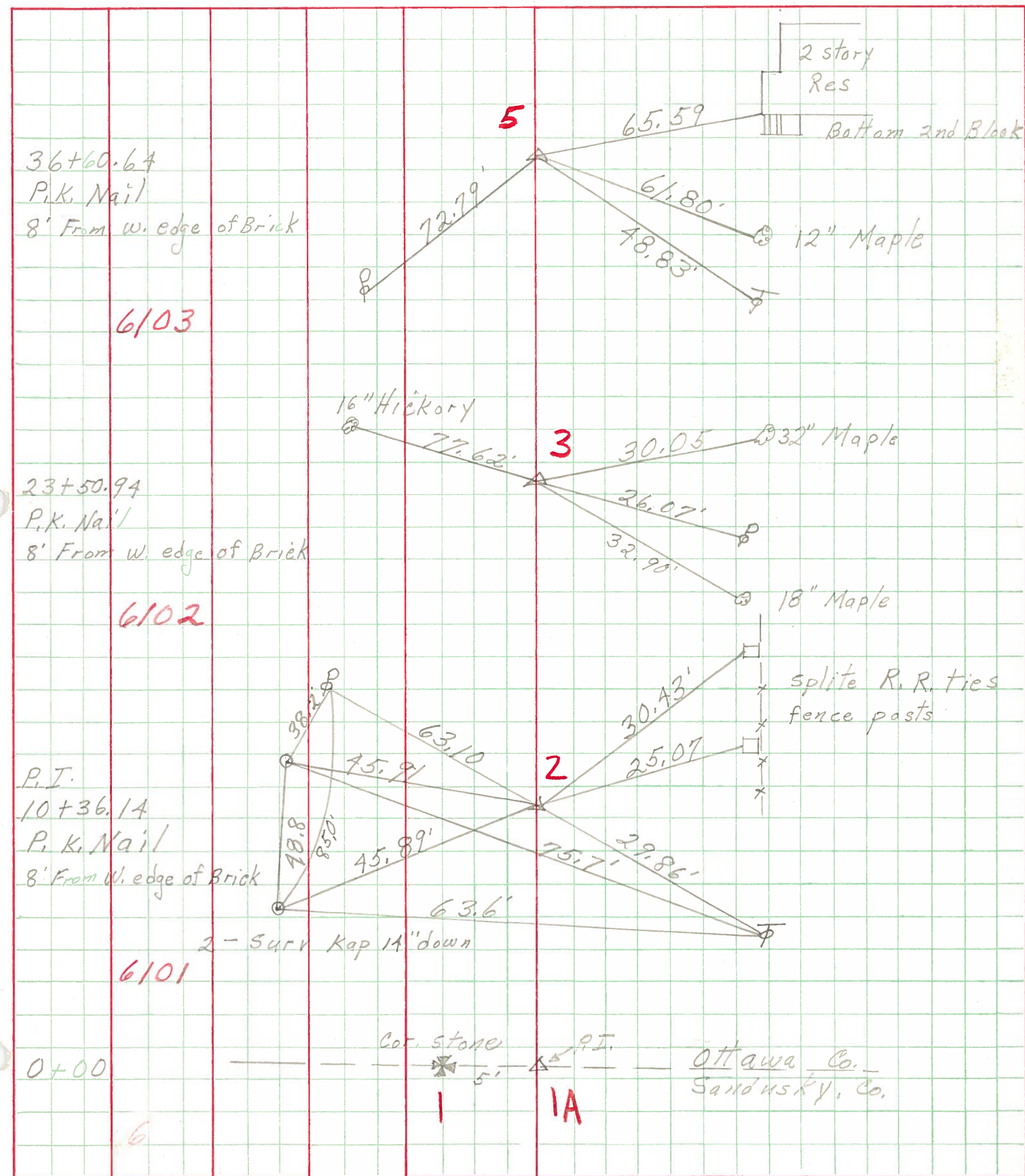




PERSONNEL	TITLE	PERSONNEL	TITLE
Schneider			
Mosser			
Barbour			
Patt.			

COUNTY Ottawa DATE 5-10-68  
 S. R. 19 WEATHER Partly-Cloudy  
 SEC. San. Co. Line - Oak Harbour TEMP. 60°

DESCRIPTION Ties for Control Points JOB NO. \_\_\_\_\_



36+60.64  
 P.K. Nail  
 8' From w. edge of Brick  
 6103

23+50.94  
 P.K. Nail  
 8' From w. edge of Brick  
 6102

P.I.  
 10+36.14  
 P.K. Nail  
 8' From w. edge of Brick  
 2 - Surv Kap 14\" down  
 6101

0+00  
 Cor. Stone  
 5'  
 P.I.  
 1A  
 Ottawa Co.  
 Sandusky, Co.