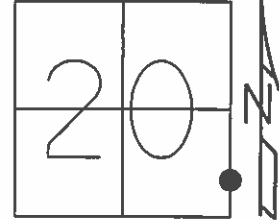


O.D.O.T. DISTRICT 2 SURVEY OFFICE (USE ONLY)

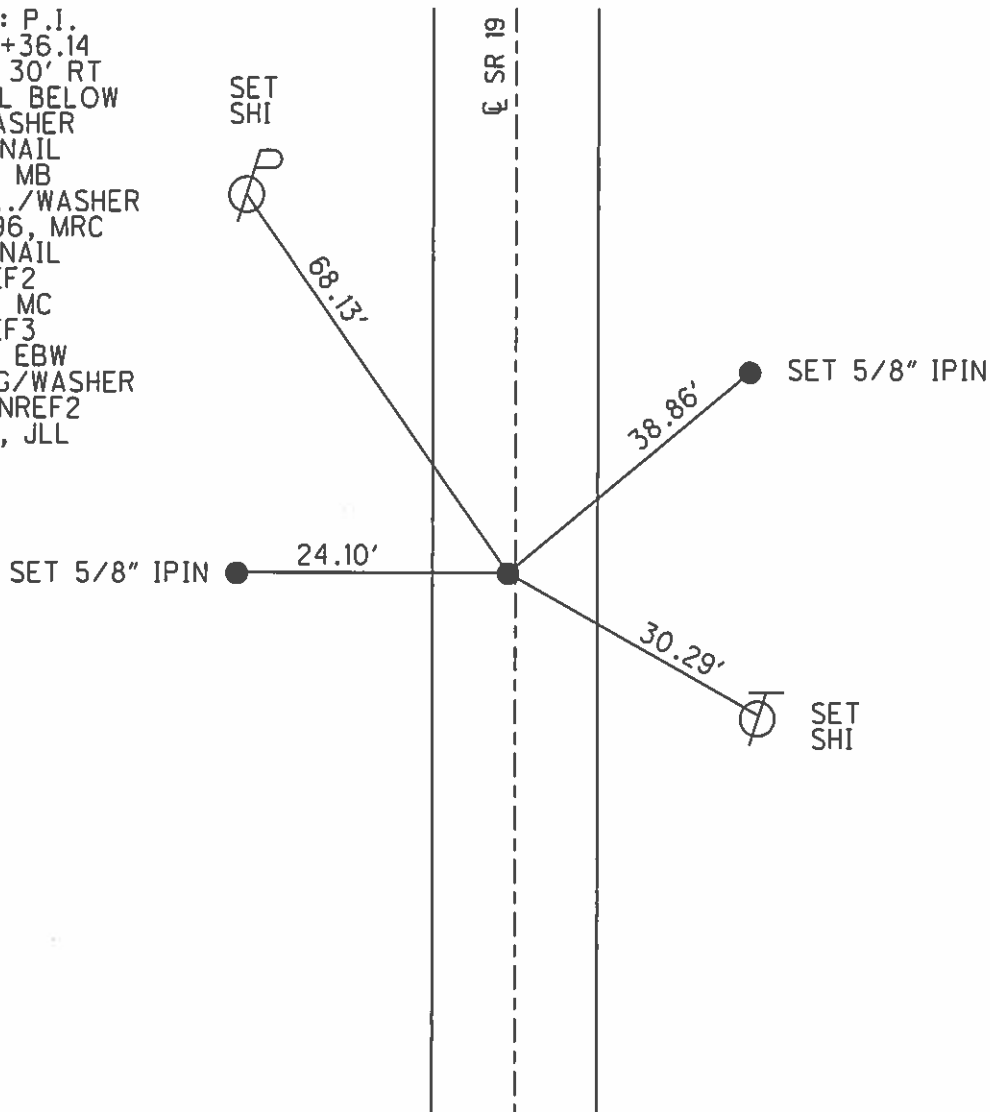
PERSONNEL _____ REFERENCE NO. 2 SHEET 3 OF 23
 NOTES LEU DATE 6/5/14 ROUTE SR 19
 H.C. WESTFALL WEATHER SUNNY COUNTY OTTAWA
 R.C. RHOADES TEMP. 70° TOWNSHIP SALEM
 _____ SECTION 20
 _____ T 6 N R 15 E

TYPE MONUMENT P.K./WASHER
 ON SURFACE - ~~BELOW~~ ON
 LEFT - Q PAV'T - ~~RIGHT~~ 0.5'
10.4' TO LT EDGE PAVEMENT
 S.L.M. 10+35.77

GRID: NORTHING: 654222.405 EASTING: 1791735.932



RECORD: P.I.
 STA. 10+36.14
 $\Delta = 0^\circ 30' RT$
 P.K.NAIL BELOW
 P.K./WASHER
 FD P.K.NAIL
 8/1/96, MB
 SET P.K./WASHER
 10/29/96, MRC
 FD P.K.NAIL
 GPS, REF2
 1/13/13, MC
 GPS, REF3
 6/5/14, EBW
 SET MAG/WASHER
 GPS, FINREF2
 7/31/14, JLL



O.D.O.T. DISTRICT 2 SURVEY OFFICE

PERSONNEL _____

REFERENCE NO. 2 SHEET 1 OF 22

NOTES Barnhisel

H.C. Cordes

R.C. Hanes

DATE 8-1-96

WEATHER Cloudy

TEMP. +75°

ROUTE SR 19

COUNTY OTTAWA

TOWNSHIP SALEM

SECTION 20

T 6 N R 15 E

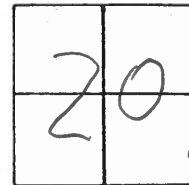
TYPE MONUMENT P.K.

ON SURFACE - ~~NO~~ Yes

LEFT- ϕ PAV'T. - ~~NO~~ 0.5

10.4 TO L EDGE PAVEMENT

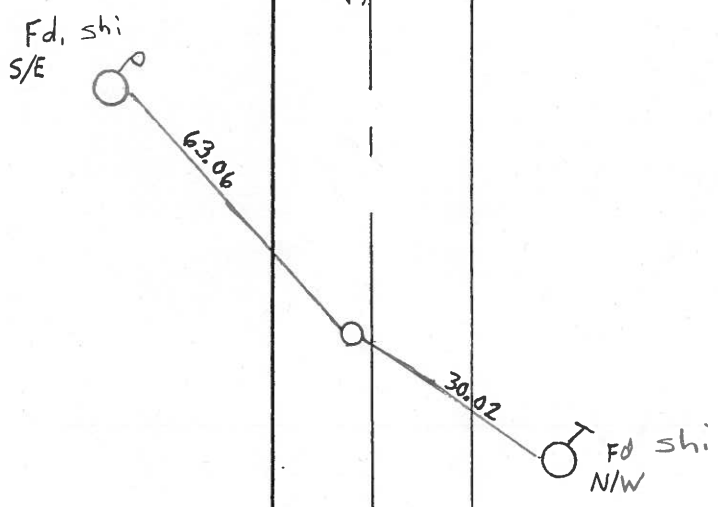
S.L.M. 10+36



RESET. P.K. & WASHER
10-29-96, M.R.C.

REC. P.I.
STA: 10+36.14

$\Delta = 00030'$ Rt. Rec
P.I.
P.K. below P.K. &
Washer



SR 19

L PAVT

Resurfaced 1996

O.D.O.T. DISTRICT 2 SURVEY OFFICE

PERSONNEL

REFERENCE NO. 2

SHEET 2 OF

NOTES Cronin

H.C. Barbour

R.C. Geyman

DATE 8/08/88

WEATHER sunny

TEMP. 83°

ROUTE #19

COUNTY Ottawa

TOWNSHIP Salem

SECTION 21

T. 6 N. R.

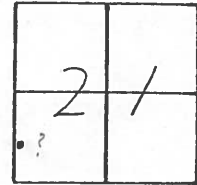
TYPE MONUMENT P.K. Washer

ON SURFACE - BELOW

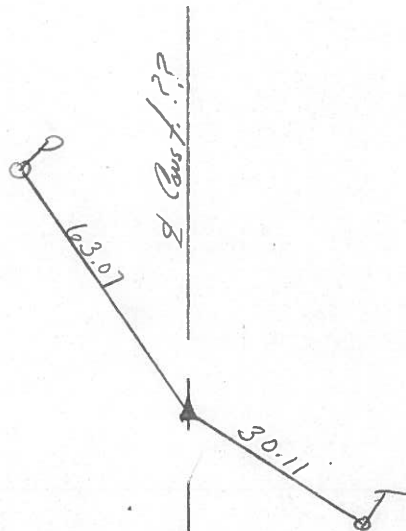
LEFT - PAV'T. - RIGHT

 TO EDGE PAVEMENT

S.L.M. 10+36.14 (10+36.14 1924 PLAN)



Δ = 00030 Rt. Rec
P.I
P.R. below P.K. Washer



County OTTAWA S.R. 19

Township SALEM

Section 20

T8N, R5E

Personnel HOFFMAN

Loehrke

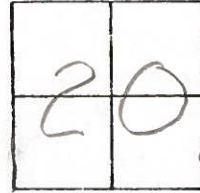
Householder

#2

Date 7-23-81

Weather clear

Temp. +75°

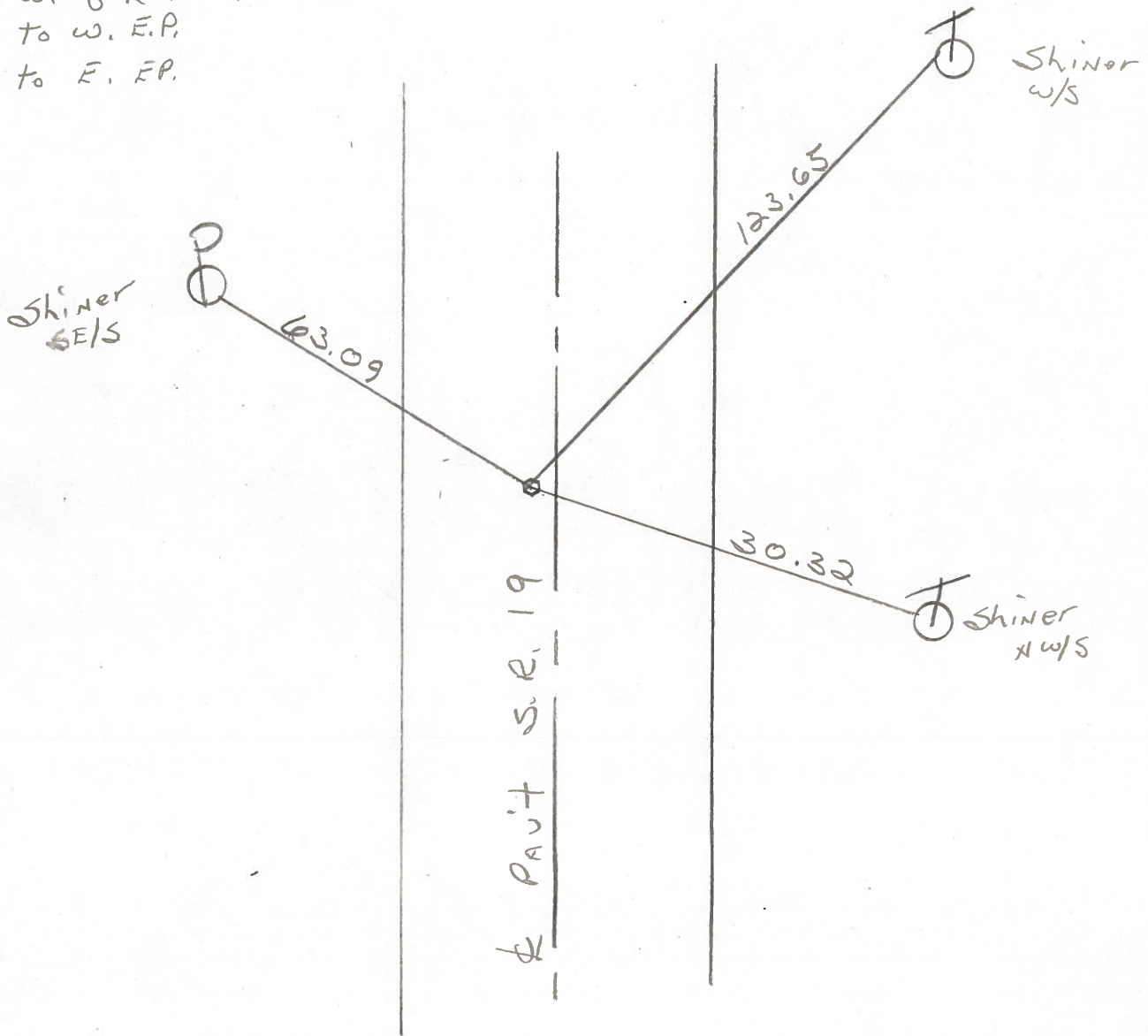


Set small R.R. SPK.

0.6' w. of R PAUT

10.8' to W. E.P.

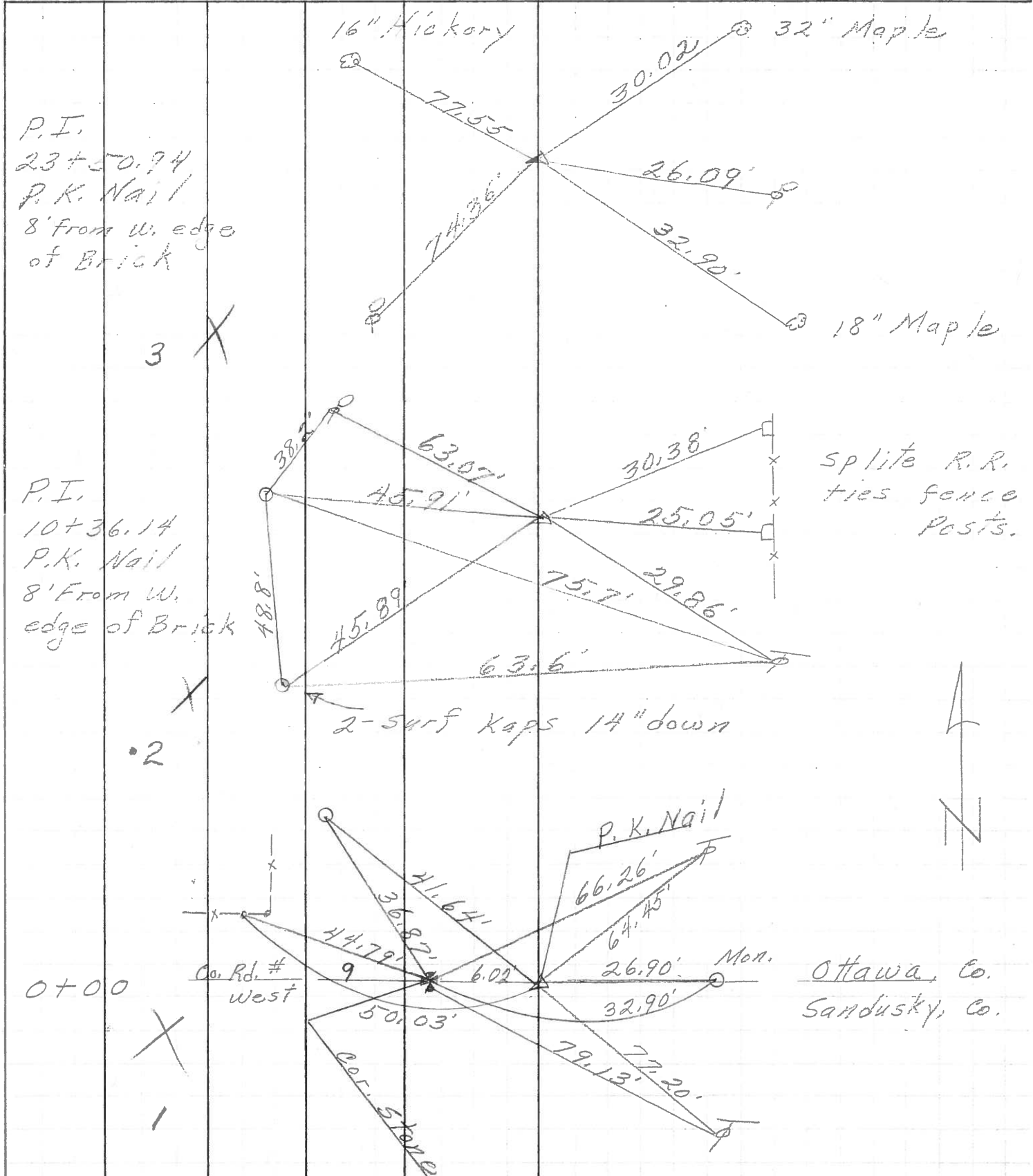
12.9' to E. EP.



P.I. STA. 10 + 36.14 ~ Rec.

PERSONNEL	TITLE	PERSONNEL	TITLE	COUNTY	DATE
<u>Schneider</u>				<u>Ottawa</u>	<u>5-4-71</u>
<u>Mosser</u>				S. R. <u>19</u>	WEATHER _____
<u>Barbour</u>				SEC. <u>20 & 21</u>	TEMP. _____
<u>Geyman</u>					

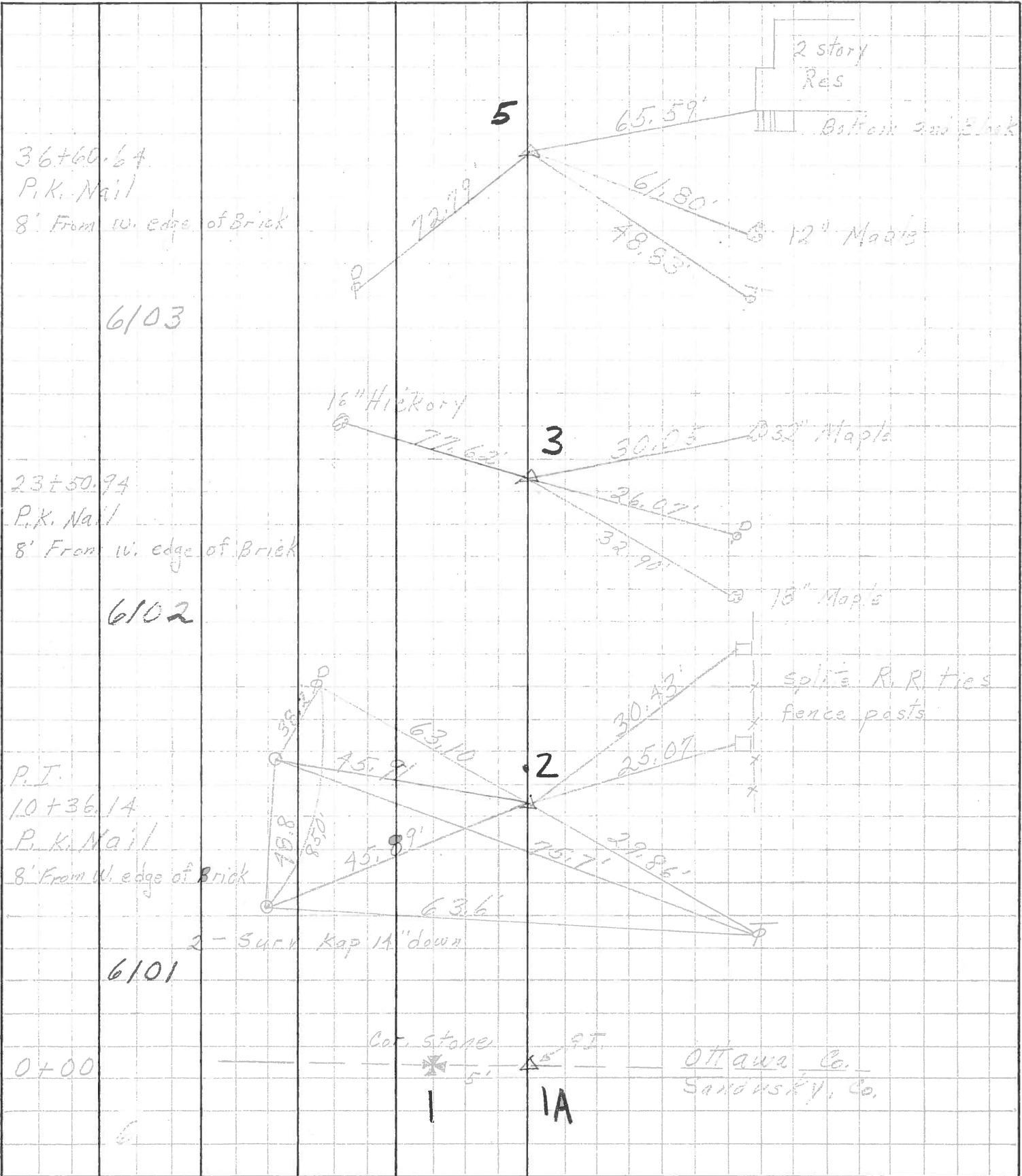
DESCRIPTION Sandusky Co. Line to Oak Harbor JOB NO. _____



PERSONNEL	TITLE	PERSONNEL	TITLE
Schneider			
Mosser			
Barbour			
Patt.			

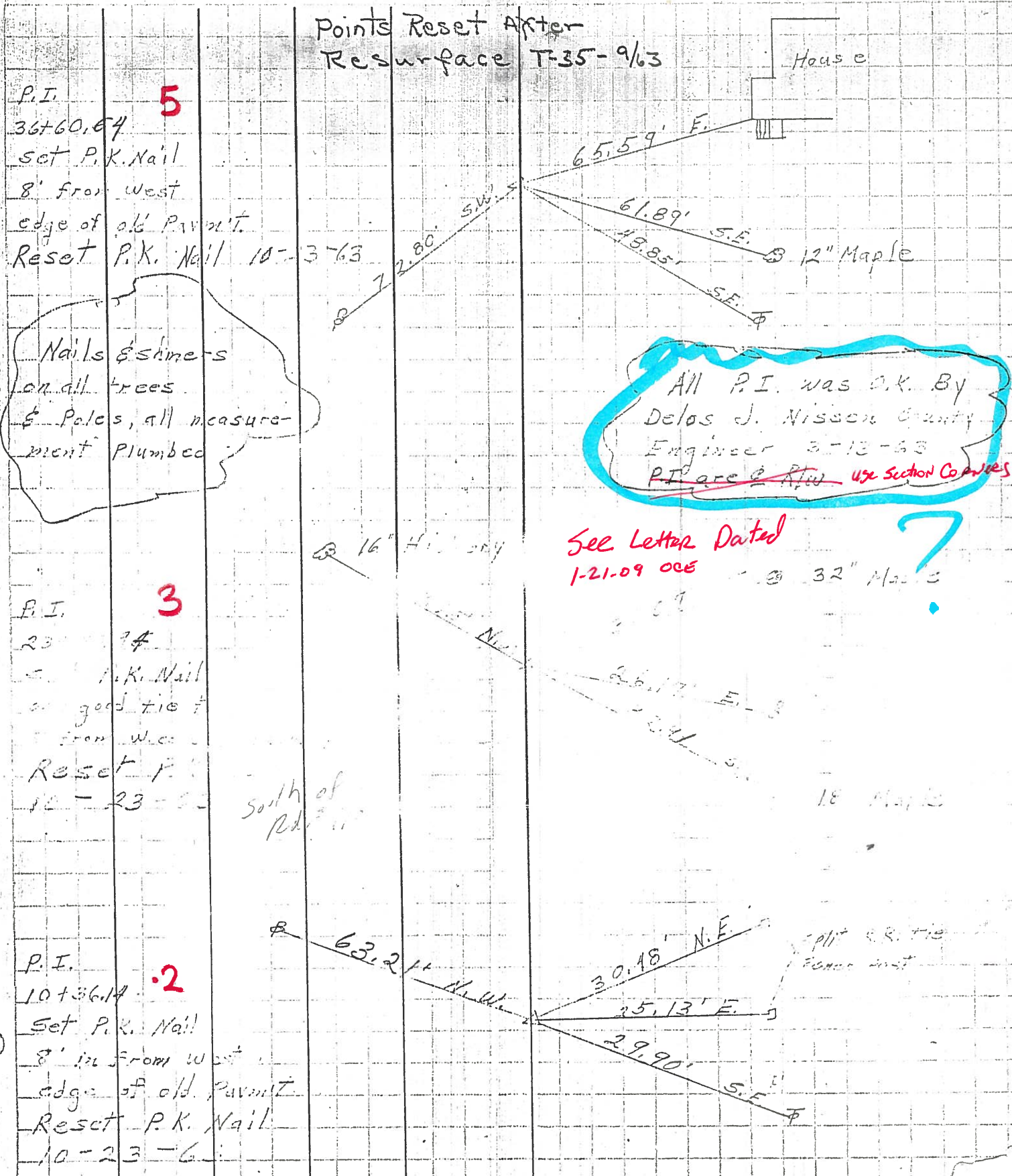
COUNTY Ottawa DATE 5-10-68
 S. R. 19 WEATHER Partly-Cloud
 SEC. San. Co. Live-Oak Harbour TEMP. 60°

DESCRIPTION Ties for Control Points JOB NO. _____
 LEFT CENTER LINE RIGHT

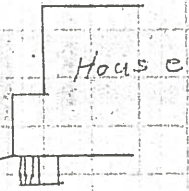


PERSONNEL	TITLE	PERSONNEL	TITLE	COUNTY	DATE	WEATHER	TEMP.
Schneider		Subwara		Ottawa	3-5-63	Cloudy	32°
Mossor				S. R. # 19			
Kawalecki				SEC. Standardy Collins North			
Zahn							

DESCRIPTION Ties for Central Points JOB NO. _____

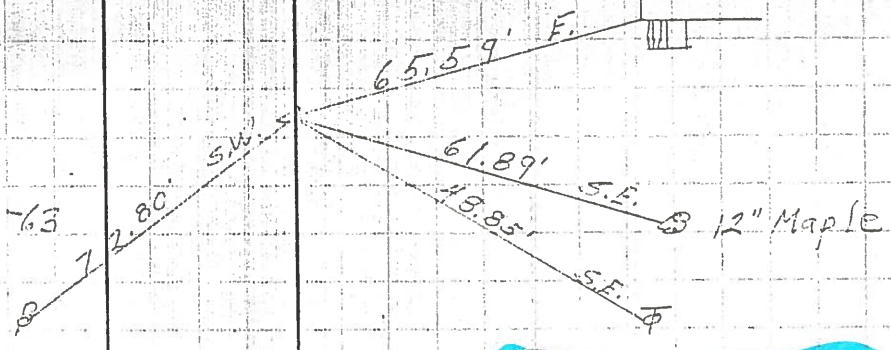


Points Reset After Resurface T-35-9/63



P.I. **5**
 36+60.64
 Set P.K. Nail
 8' from West
 edge of old Pavmt.
 Reset P.K. Nail 10-3-63

Nails & shiners
 on all trees
 & Poles, all measure-
 ment Plumbed

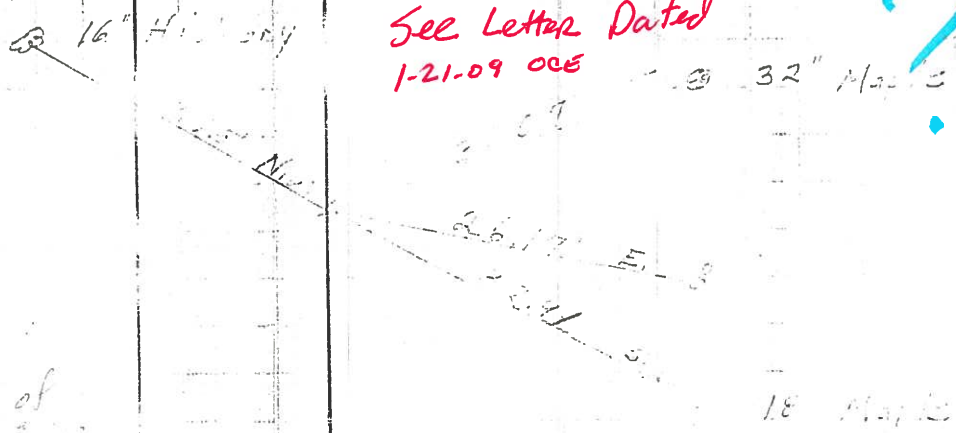


All P.I. was O.K. By
 Delos J. Nisson County
 Engineer 3-12-63
~~P.I. are @ RTW use Section Co. Poles~~

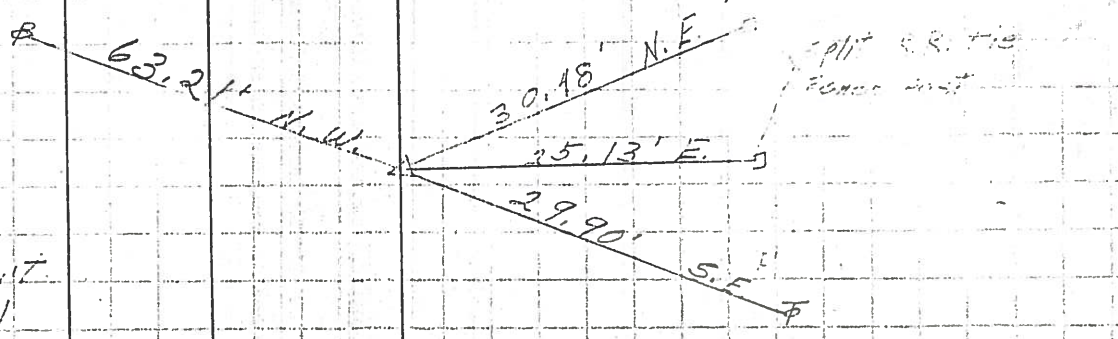
See Letter Dated
 1-21-09 OCE

P.I. **3**
 23+14
 Set P.K. Nail
 on good tie 4'
 from West
 edge of old Pavmt.
 Reset P.K. Nail 10-23-63

South of
 Rd. # 117



P.I. **2**
 10+36.14
 Set P.K. Nail
 8' in from West
 edge of old Pavmt.
 Reset P.K. Nail 10-23-63



split R.R. tie
 fence post