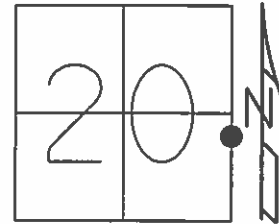


O.D.O.T. DISTRICT 2 SURVEY OFFICE (USE ONLY)

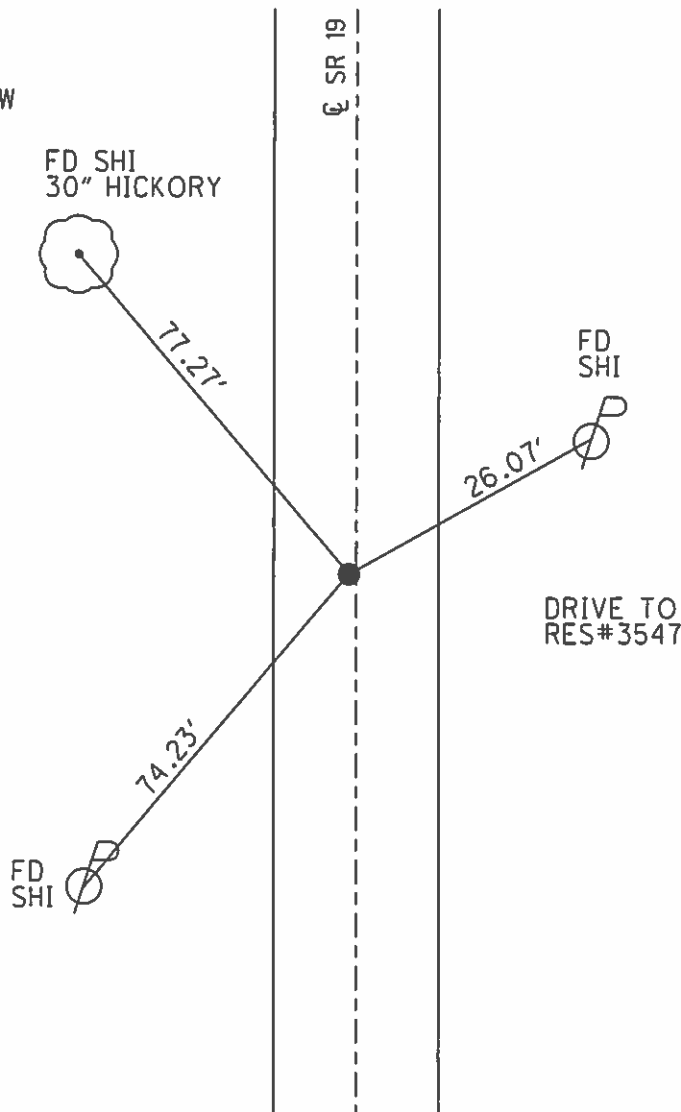
PERSONNEL	REFERENCE NO.	<u>3</u>	SHEET	<u>4</u>	OF	<u>23</u>
NOTES	LEU	DATE	<u>6/5/14</u>	ROUTE	<u>SR 19</u>	
H.C.	<u>WESTFALL</u>	WEATHER	<u>SUNNY</u>	COUNTY	<u>OTTAWA</u>	
R.C.	<u>RHOADES</u>	TEMP.	<u>70°</u>	TOWNSHIP	<u>SALEM</u>	
				SECTION	<u>20</u>	
				T	<u>6</u>	R
				N		E

TYPE MONUMENT P.K./WASHER
 ON SURFACE - ~~BELOW~~ ON
 LEFT - Q PAV'T - ~~RIGHT~~ 0.6'
10.3' TO LT EDGE PAVEMENT
 S.L.M. 23+50.57



GRID: NORTHING: 655537.176 EASTING: 1791729.700

RECORD: P.I.
 STA. 23+50.94
 $\Delta = 0^\circ 10' \text{ LT}$
 P.K./WASHER BELOW
 P.K./WASHER
 FD P.K./WASHER
 8/1/96, MB
 SET P.K./WASHER
 10/29/96, MRC
 FD P.K./WASHER
 GPS, REF3
 1/15/13, MC
 GPS, REF4
 6/5/14, EBW
 SET MAG/WASHER
 GPS, FINREF3
 7/31/14, JLL



O.D.O.T. DISTRICT 2 SURVEY OFFICE

PERSONNEL

REFERENCE NO. 3

SHEET 2 OF 22

NOTES Barnhisel

H.G. Cardes

R.C. Hanes III

DATE 8-1-96

WEATHER Cloudy + 75°F

TEMP. +75°F

ROUTE SR 19

COUNTY OTTAWA

TOWNSHIP SALEM

SECTION 20

T 6 N 15 E

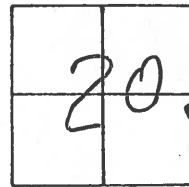
TYPE MONUMENT P.K. & Washer

ON SURFACE - ~~BELOW~~ Yes

LEFT- & PAV'T. - ~~RIGHT~~ 0.6'

10.3' TO LT EDGE PAVEMENT

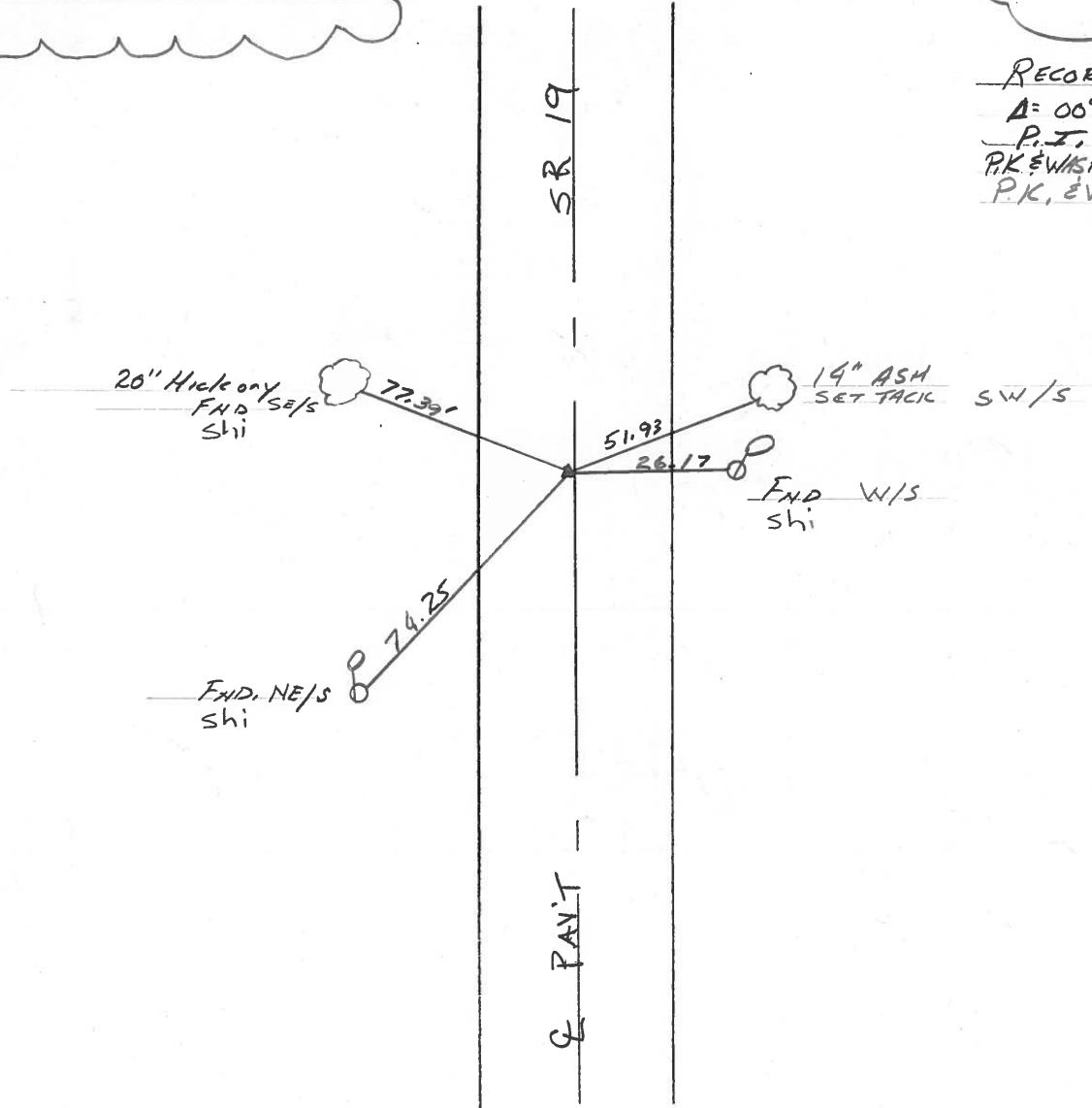
S.L.M. 23+63



RESET. P.K. & WASHER
10-29-96. M.R.C.

REC P.I.
STA: 23+50.94

RECORD:
Δ: 00° 10' LT
P.I.
P.K. & WASHER Below
P.K. & WASHER



O.D.O.T. DISTRICT 2 SURVEY OFFICE

PERSONNEL

REFERENCE NO. 3

SHEET 3 OF

NOTES Cronin

H.C. Barbour

R.C. Geyman

DATE 8/08/88

WEATHER sunny

TEMP. 83°

ROUTE #19

COUNTY Ottawa

TOWNSHIP Salem

SECTION 21

T 6 N R 15 E

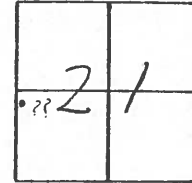
TYPE MONUMENT P.K. & washer

ON SURFACE - BELOW

LEFT - \odot PAV'T. - RIGHT 0.6'

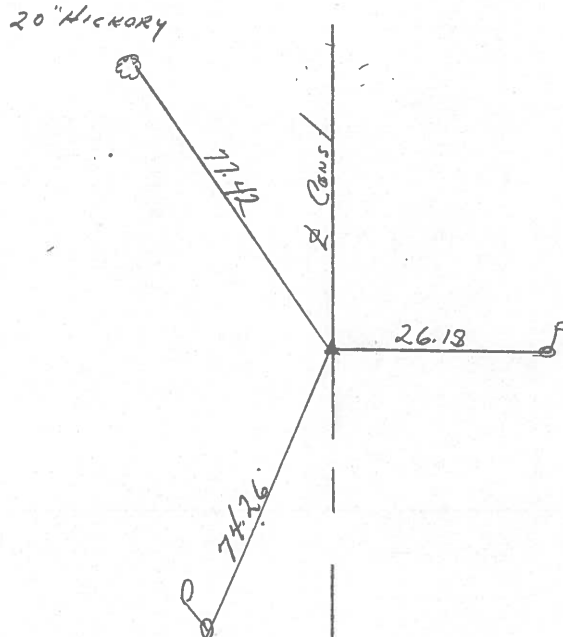
 TO EDGE PAVEMENT

S.L.M. 23+50.94 (23+50.95 1924 PLAN)



A = 00° 10' Lt. Rec.

P.I.
P.K. & washer below.
P.K. & washer



County OTTAWA S.R. 19

Date 7-23-81

Township SALEM

Weather clear

Section 20

Temp. +75°

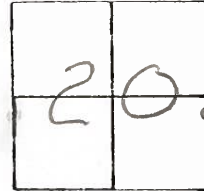
TEN, RISE

Personnel HOFFMAN

Loehrke

Householder

#3

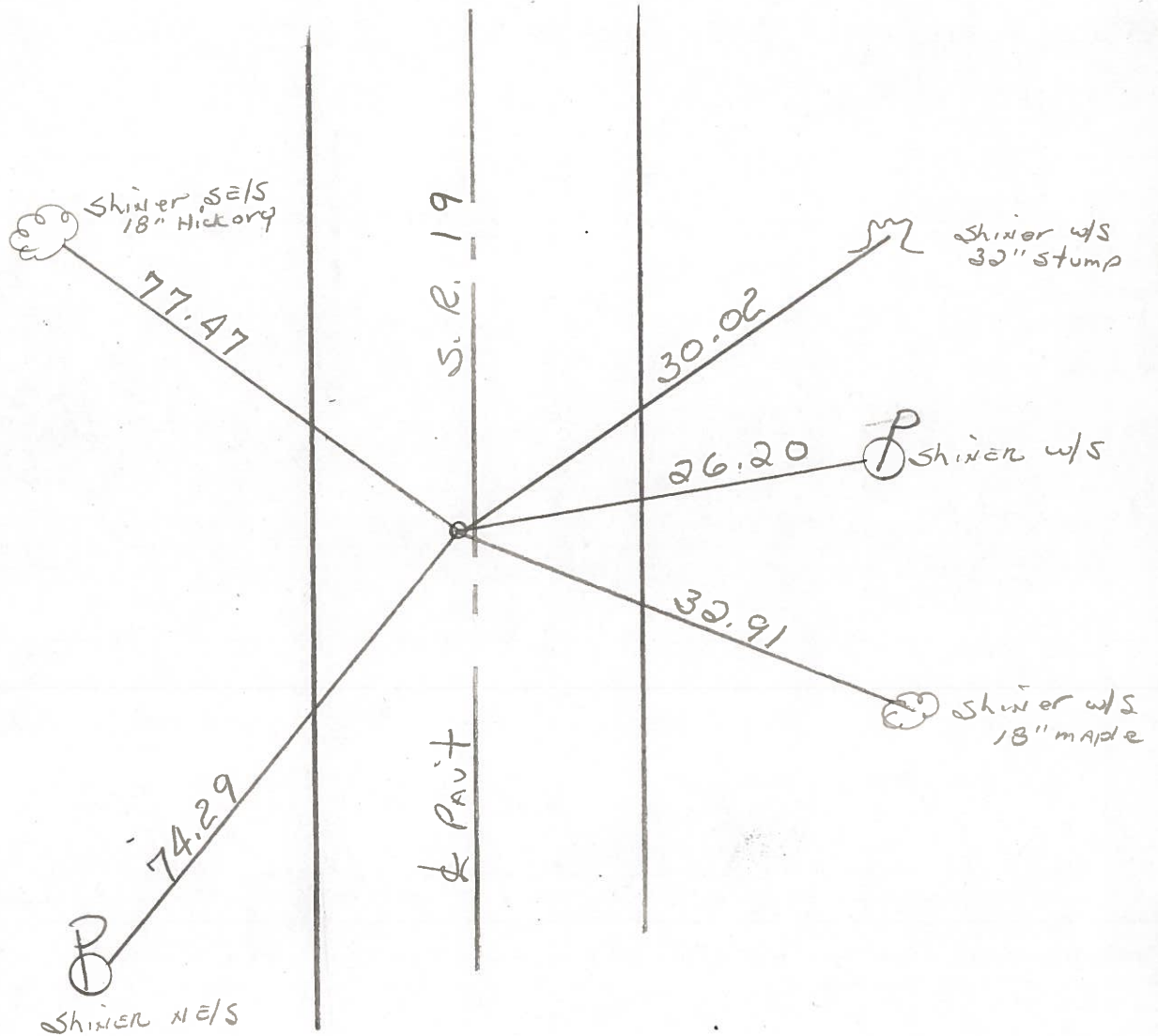


Set P.K. Nail & Washer

0.60' w. of & PAUT.

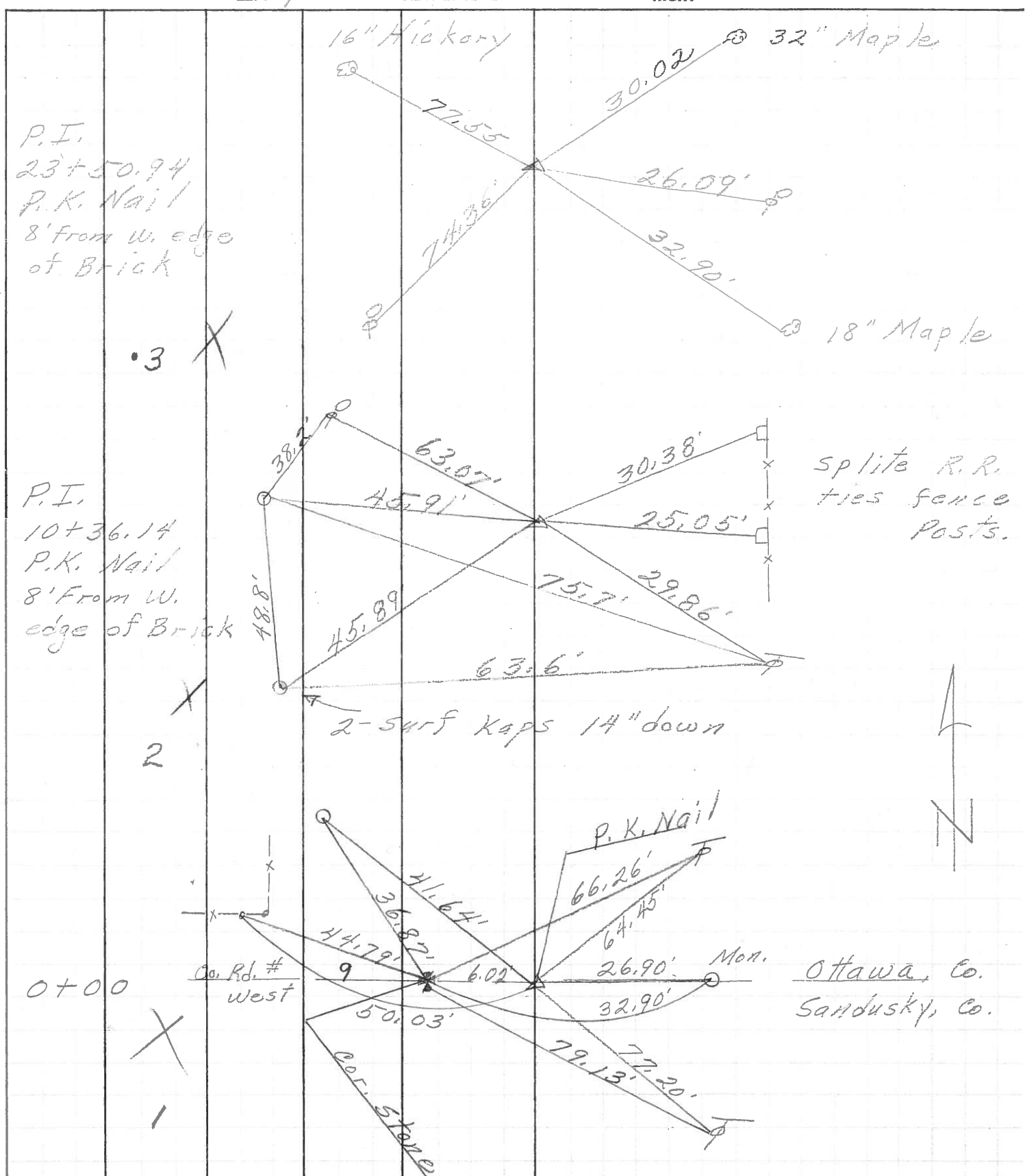
11.4' to W.E.P.

13.3' to E.E.P.



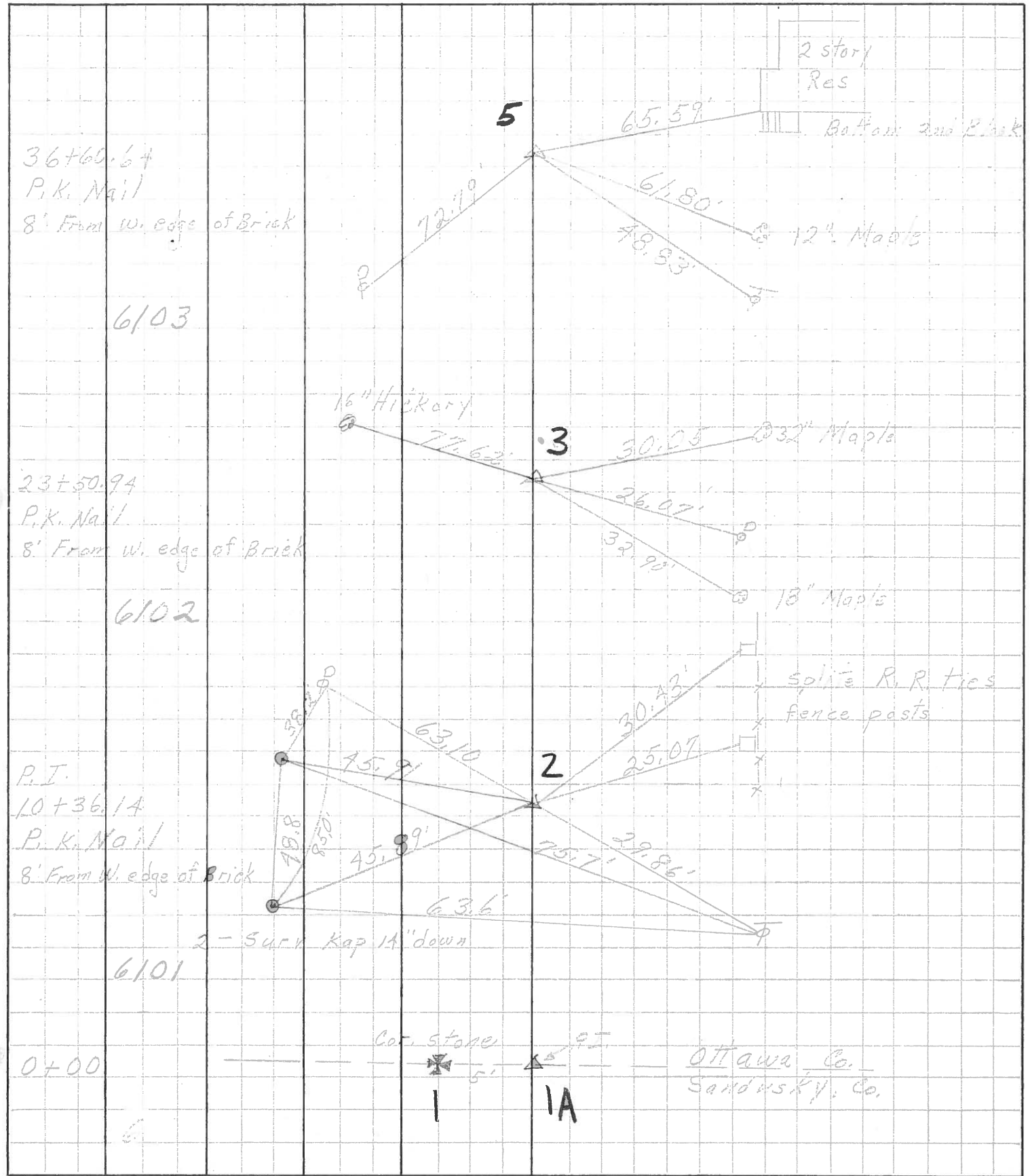
P.I. STA. 23+50.94 ~ Rec.

PERSONNEL	TITLE	PERSONNEL	TITLE	COUNTY	DATE
<u>Schneider</u>				<u>Ottawa</u>	<u>5-4-71</u>
<u>Masser</u>				S. R.	<u>19</u>
<u>Barbour</u>				WEATHER	
<u>Gayman</u>				SEC.	<u>20521</u>
TEMP.					
DESCRIPTION	<u>Sandusky, Co. Line to Oak Harbor</u>				JOB NO.



PERSONNEL	TITLE	PERSONNEL	TITLE	COUNTY	Ottawa	DATE	5-10-68
Schneider				S. R.	19	WEATHER	Partly-Cloud
Mosser				SEC.	San. Co. Line - Oak Harbor	TEMP.	60°
Barbour							
Patt.							

DESCRIPTION Ties for Control Points LEFT CENTER LINE RIGHT JOB NO.



36+66.64
P.K. Nail
8' From W. edge of Brick
6103

23+50.94
P.K. Nail
8' From W. edge of Brick
6102

P.I.
10+36.14
P.K. Nail
8' From W. edge of Brick
2-Surv Kap 1A" down
6101

0+00
6

16" Hickory

2 story Res
Bal. Porch and Deck

12" Maple

32" Maple

18" Maple

split R.R. ties
fence posts

Ottawa Co.
Sandusky Co.

PERSONNEL	TITLE	PERSONNEL	TITLE	COUNTY	DATE
Schneider		Schwartz		Champaign	3-5-63
Masser				S. R. # 19	WEATHER Cloudy
Kowalski				SEC. Secondary	TEMP. 33°
Zahr					

DESCRIPTION Ties for Central Points JOB NO. _____

