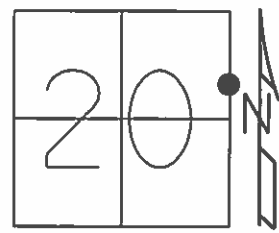


O.D.O.T. DISTRICT 2 SURVEY OFFICE (USE ONLY)

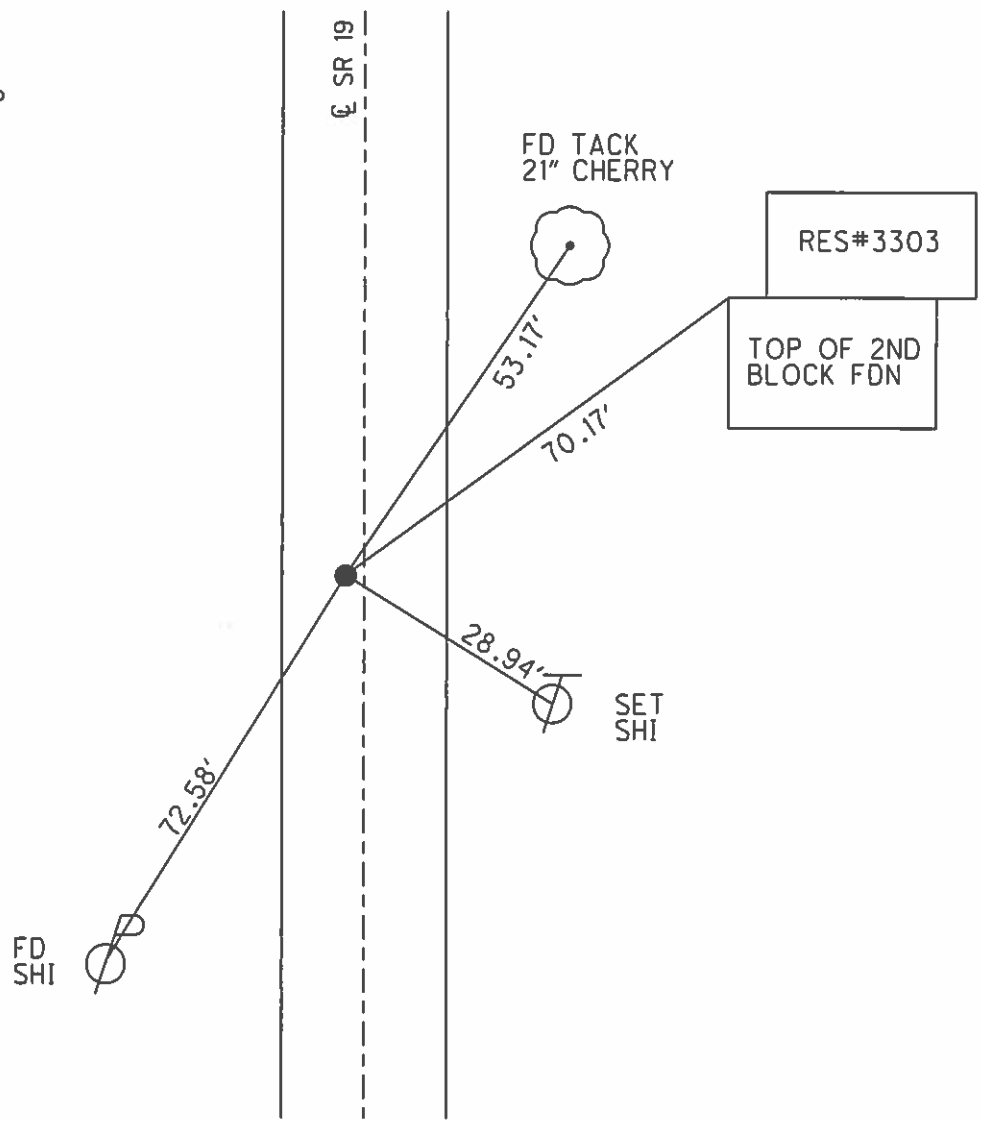
PERSONNEL _____ REFERENCE NO. 5 SHEET 6 OF 23
 NOTES LEU DATE 6/5/14 ROUTE SR 19
 H.C. WESTFALL WEATHER CLOUDY COUNTY OTTAWA
 R.C. MEYER TEMP. 75° TOWNSHIP SALEM
 _____ SECTION 20
 _____ T 6 N R 15 E

TYPE MONUMENT BOAT SPIKE
 ON SURFACE - ~~BELOW~~ ON
 LEFT - Q PAV'T - ~~RIGHT~~ 1.5'
9.7' TOLT EDGE PAVEMENT
 S.L.M. 36+59.98



GRID: NORTHING: 656846.560 EASTING: 1791719.485

RECORD: P.J.
 STA. 36+60.64
 $\Delta = 0^\circ 15' RT$
 P.K./WASHER ATOP
 P.K.NAIL
 FD BOLT SPIKE
 8/1/96, MB
 SET P.K./WASHER
 10/29/96, MRC
 FD P.K./WASHER
 GPS, REF5
 1/15/13, MC
 GPS, REF6
 6/5/14, EBW
 SET MAG/WASHER
 GPS, FINREF5
 7/31/14, JLL



O.D.O.T. DISTRICT 2 SURVEY OFFICE

PERSONNEL _____

REFERENCE NO. 5

SHEET 4 OF 22

NOTES Barnhisel

H.C. Cordes

R.C. Hanes DJ

DATE 8-1-96

WEATHER Cloudy

TEMP. +75°

ROUTE SR 19

COUNTY OTTAWA

TOWNSHIP SALEM

SECTION 20

T6 N R15 E

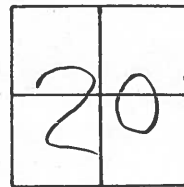
TYPE MONUMENT BOLT SPIKE

~~ON SURFACE~~ - BELOW 1 1/2

LEFT - ~~C~~ PAV'T. - ~~RIGHT~~ RIGHT 1.1

9.7 TO LT EDGE PAVEMENT

S.L.M. 36+64



RESET P.K./WASHER

10/29/96, M.R.C.

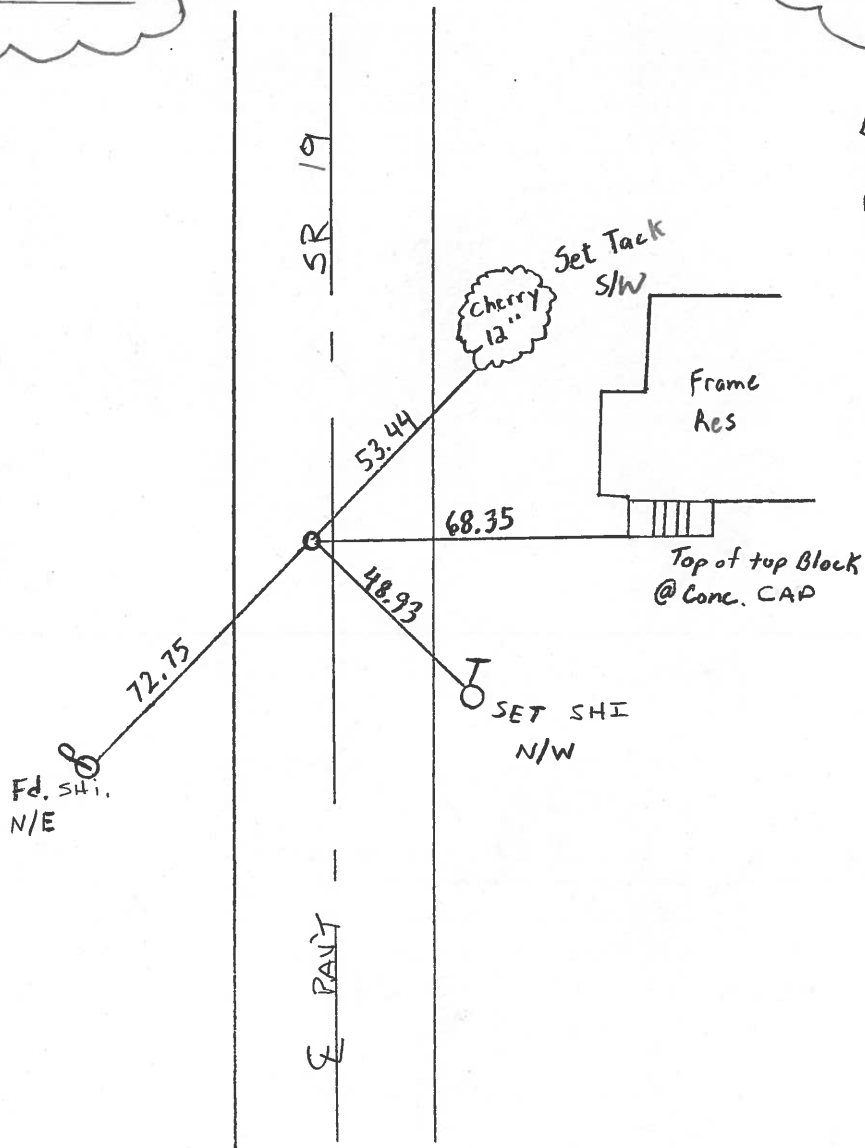
REC. P.I.
STA 36+60.64

$\Delta = 00^{\circ}15'$ Rt. Plan

P.I.

P.K. & Washer Atop PK

Below Surface



O.D.O.T. DISTRICT 2 SURVEY OFFICE

PERSONNEL

NOTES CRONIN

H.C. RIPPLE

R.C. GEYMAN

REFERENCE NO. 5

DRAWN 4/14/89

DATE 4/18/89

WEATHER OVERCAST

TEMP. 42°

SHEET 5 OF

ROUTE #19

COUNTY OTTAWA

TOWNSHIP SALEM

SECTION 21

T 6 N R 15 E

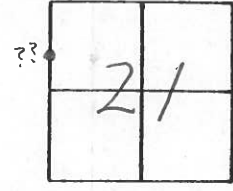
TYPE MONUMENT P.K. & WASHER

ON SURFACE - BELOW

LEFT - PAV'T. - RIGHT 1.0' ±

 TO EDGE PAVEMENT

S.L.M. 0.6933 ± 36+60.64 (60.5) ^{1924 PLAN}

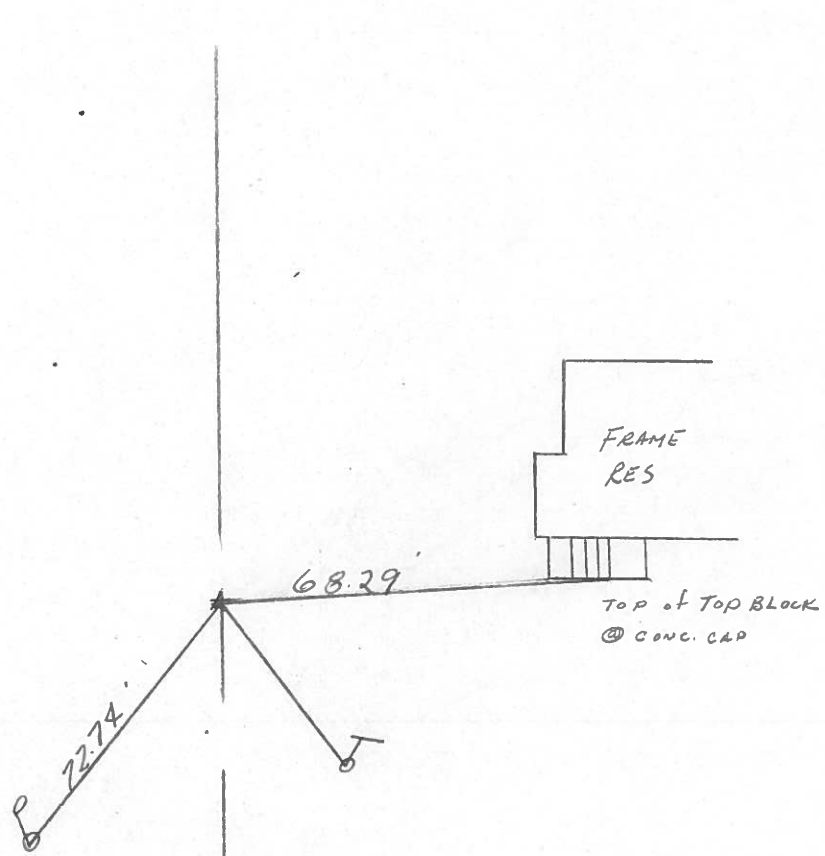


Δ = 00°15' Rt. PLAN

P.I.

P.K. & WASHER ATOP P.K.

BELOW SURFACE



County OTTAWA S.R. 19

Date 7-23-81

Township SALEM

Weather CLEAR

Section 20

Temp. +75°

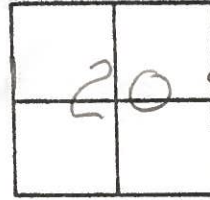
TBN, RISE

Personnel HOFFMAN

Householder

Loehrke

#5

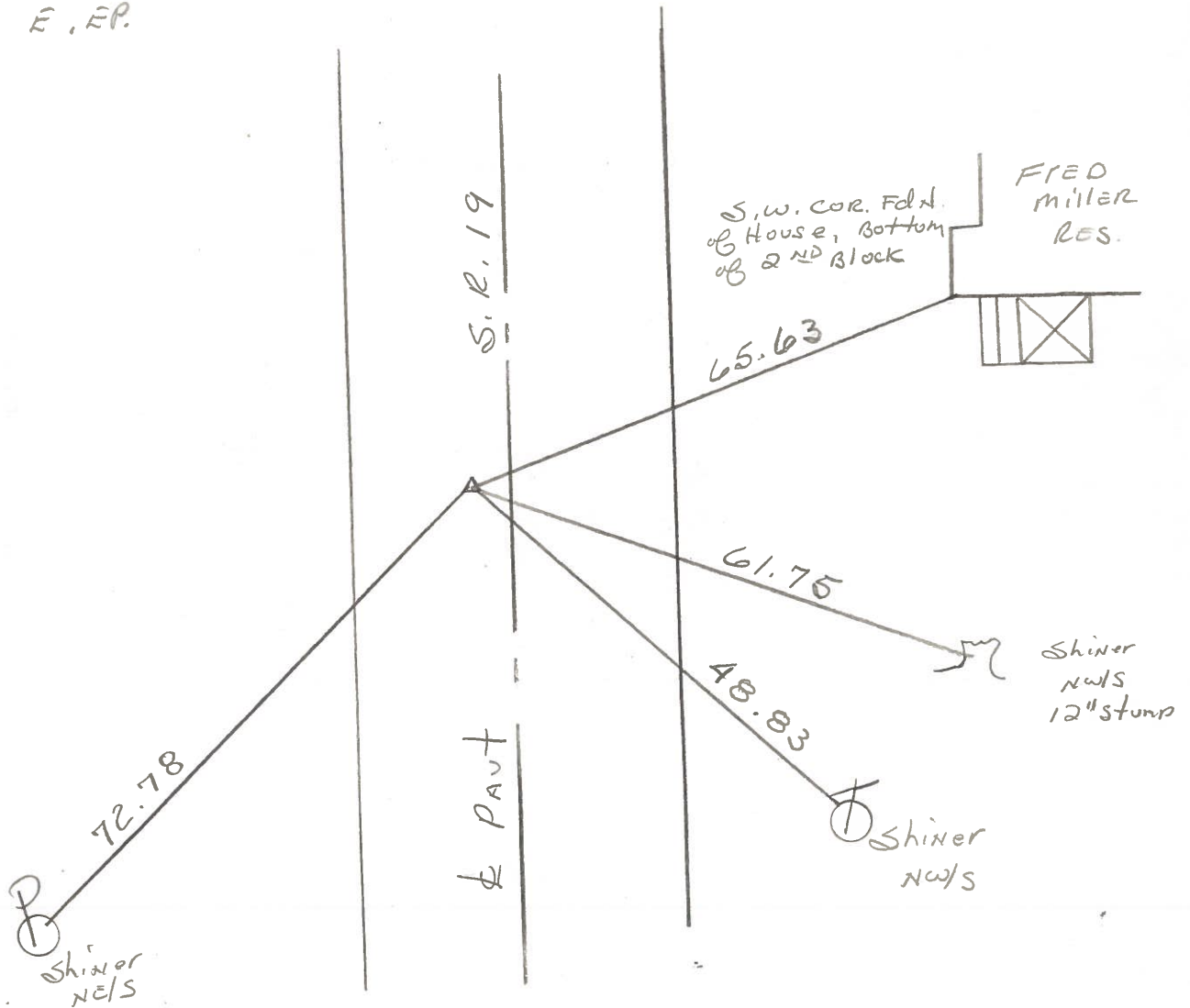


Set P.K. nail & washer

1.3' w. of & PAUT

11.2' to W.E.P.

14.0' to E.E.P.



P.I. STA. 36 + 60.64

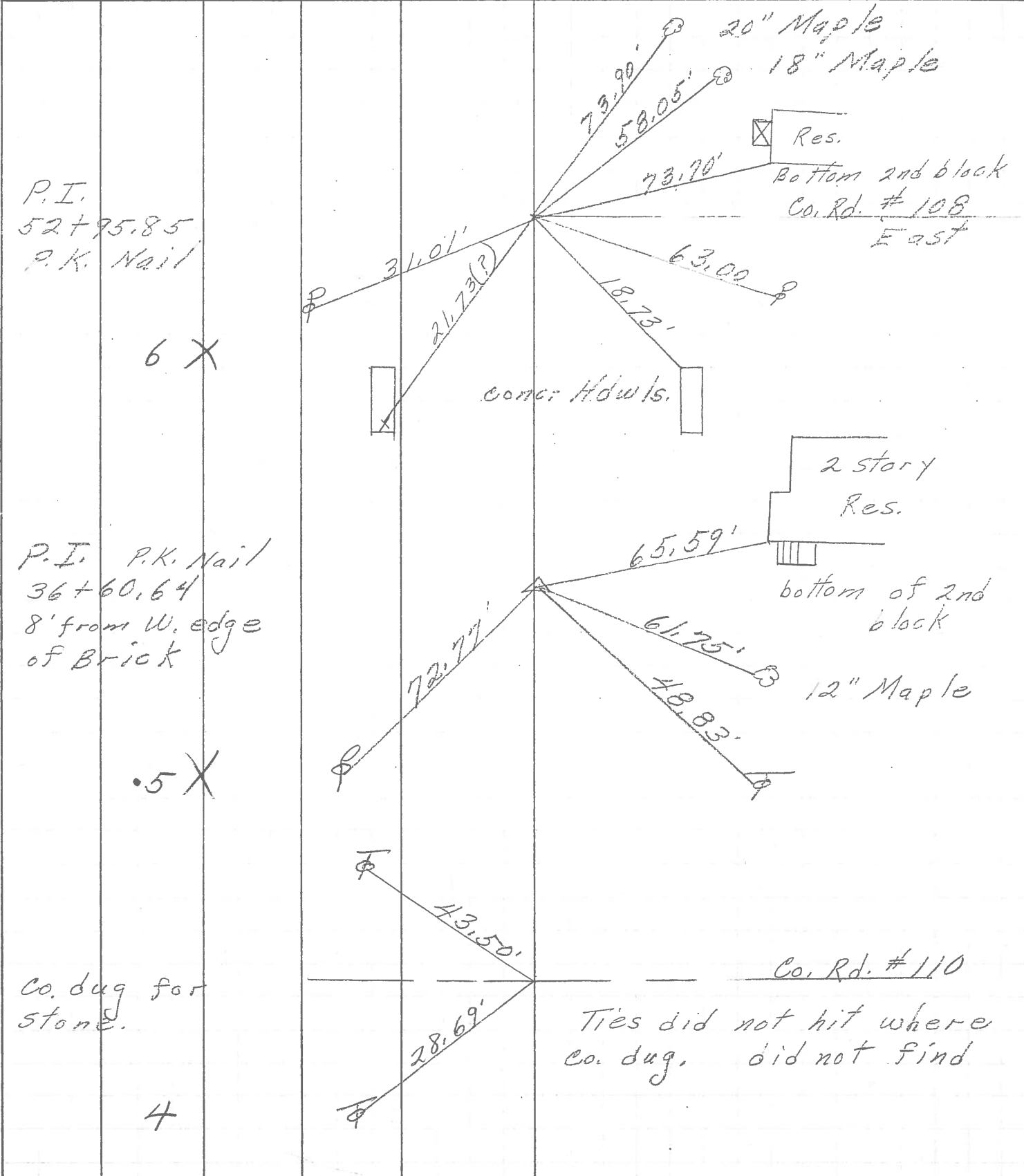
PERSONNEL TITLE PERSONNEL TITLE

COUNTY Ottawa DATE 5-4-71

S. R. 19 WEATHER

SEC. 20 & 21 TEMP.

DESCRIPTION Sardusky Co. Line to Oak Harbor JOB NO.



P.I.
52+75.85
P.K. Nail

6 X

P.I. P.K. Nail
36+60.64
8' from W. edge
of Brick

.5 X

Co. dug for
stone.

4

Co. Rd. #110
Ties did not hit where
co. dug, did not find

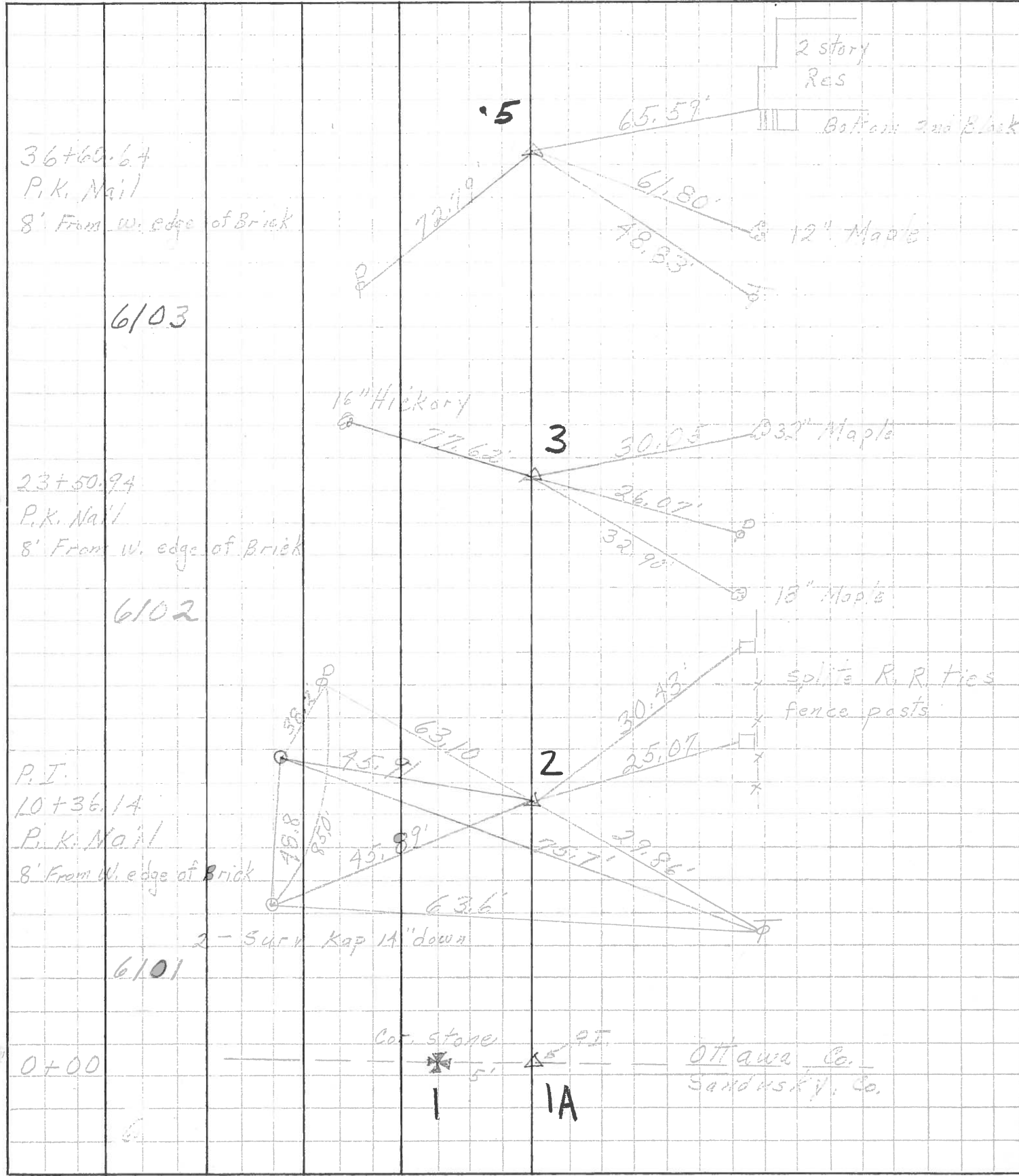
PERSONNEL TITLE PERSONNEL TITLE
 Schneider _____
 Mosser _____
 Barbour _____
 Pott _____

COUNTY Ottawa DATE 5-10-68

S. R. 19 WEATHER Partly-Cloud

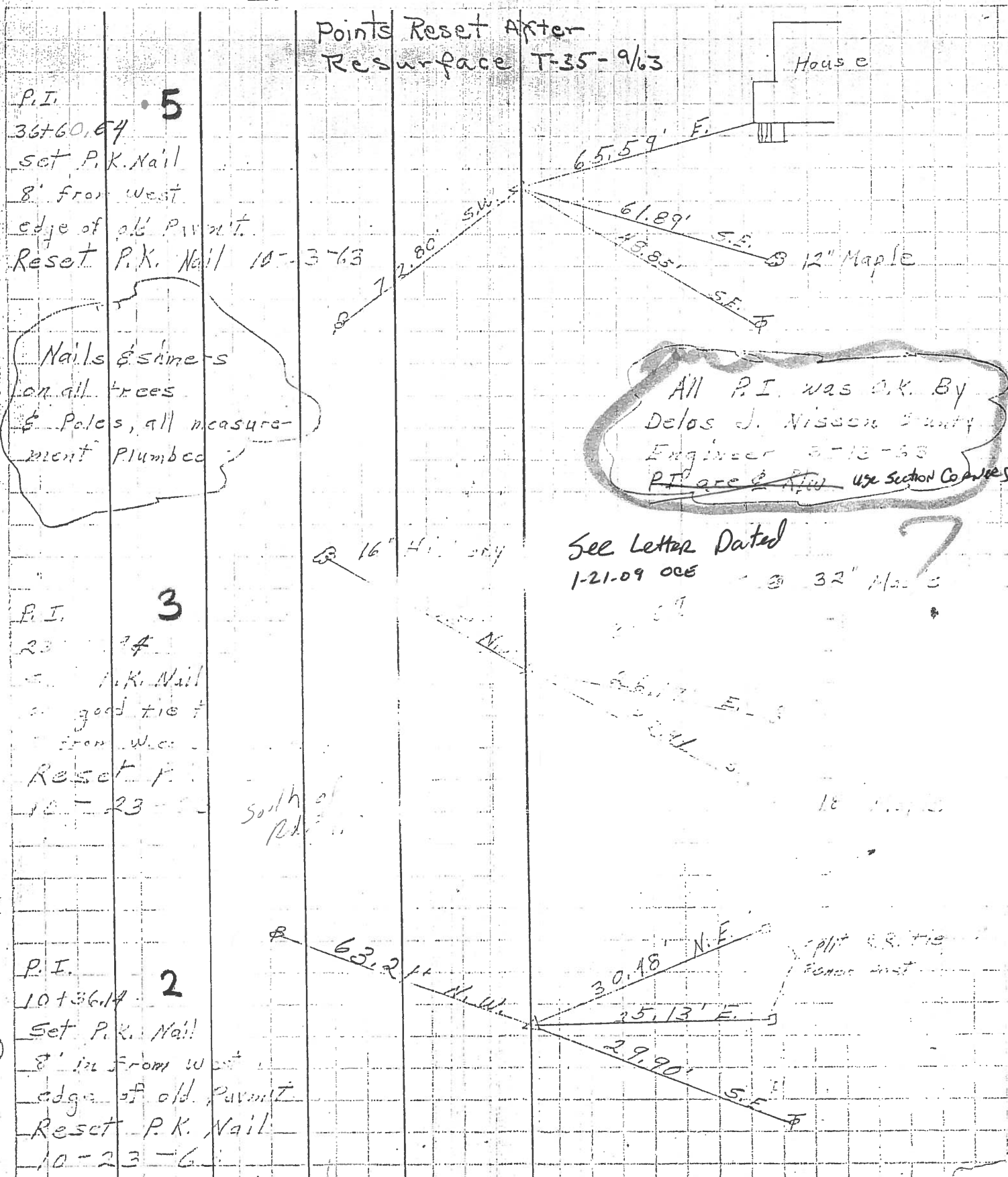
SEC. San. Co. Live-Oak Harbor TEMP. 60°

DESCRIPTION Ties for Control Points JOB NO. _____



PERSONNEL	TITLE	PERSONNEL	TITLE	COUNTY	DATE
Schneider		Schwartz		Cherokee	8-5-63
Masser				S. R. # 19	WEATHER Cloudy
Kowalski				SEC. Secondary G. Line North	TEMP. 32°
Zahr					

DESCRIPTION Ties for Control Points JOB NO. _____



P.I. **5**
 36+60.64
 set P.K. Nail
 8' from west
 edge of old P.I. unit.
 Reset P.K. Nail 10-3-63

Nails & shims
 on all trees
 & poles, all measure-
 ment plumbed

P.I. **3**
 23+74
 set P.K. Nail
 good tie
 from west
 Reset P.K. Nail
 10-23-63

South of Rd.

P.I. **2**
 10+36.14
 set P.K. Nail
 8' from west
 edge of old P.I. unit.
 Reset P.K. Nail
 10-23-63

All P.I. was O.K. By
 Delos J. Nisson County
 Engineer 8-13-63
 P.I. are ~~at~~ use Section Corners

See Letter Dated
 1-21-09 OCE - 32" Maple