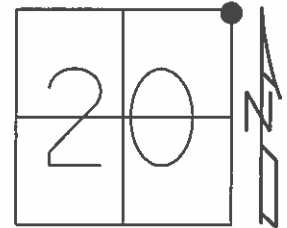


O.D.O.T. DISTRICT 2 SURVEY OFFICE (USE ONLY)

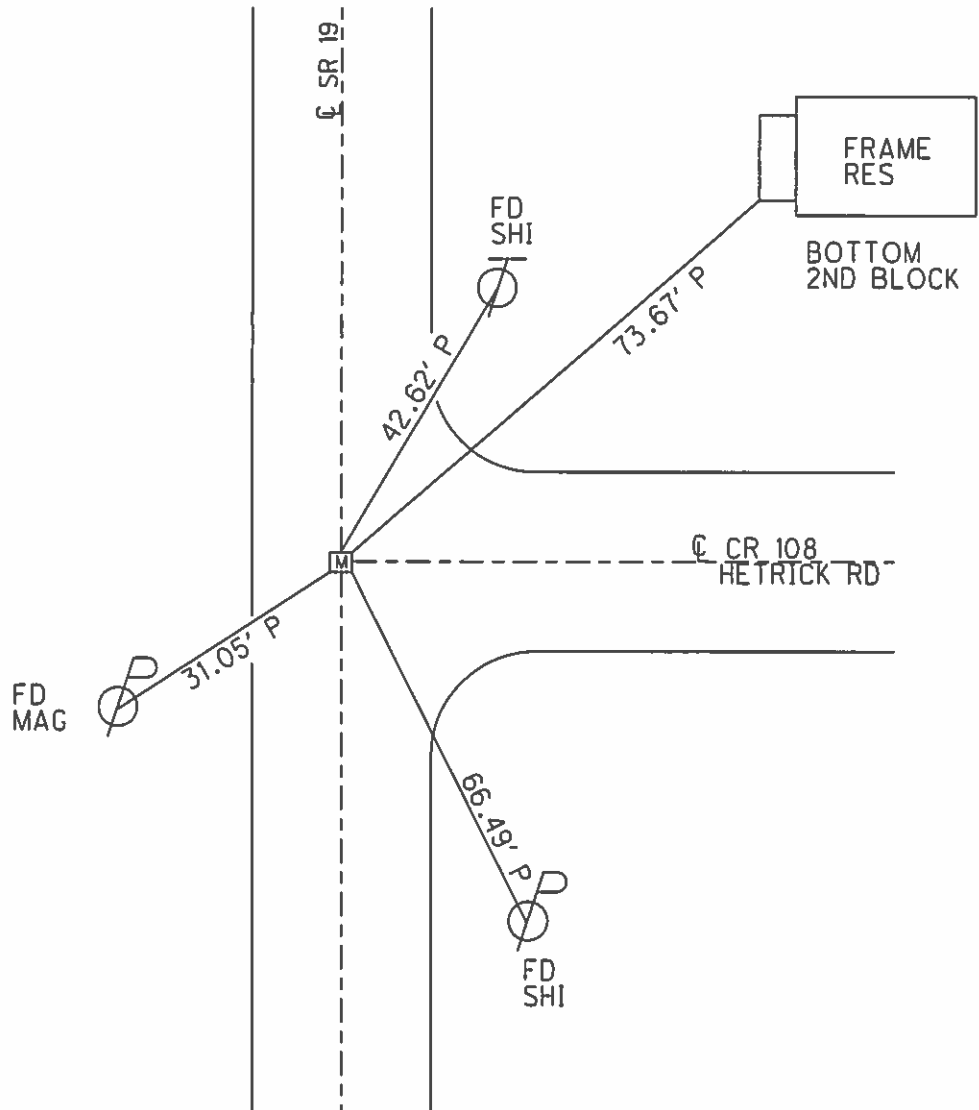
PERSONNEL	REFERENCE NO.	6	SHEET	7	OF	23
NOTES	LEU	DATE	8/7/14	ROUTE	SR 19	
H.C.	WESTFALL	WEATHER	SUNNY	COUNTY	OTTAWA	
R.C.	ALLEN	TEMP.	72°	TOWNSHIP	SALEM	
	RHOADES			SECTION	20	
	MEYER, THOMAS			T	6	R
				N		E

TYPE MONUMENT MON.BOX  
 ON SURFACE - ~~BELOW~~ ON  
 LEFT - Q PAV'T - RIGHT ON  
10.8' TOLT EDGE PAVEMENT  
 S.L.M. 52+95.19



GRID: NORTHING: 658481.783 EASTING: 1791714.972

RECORD: P.I.  
 1924 PLAN  
 STA. 52+95.85  
 $\Delta = 0^\circ 13' 30''$   
 MINE SPIKE ATOP  
 P.K.NAIL  
 FD P.K./WASHER  
 8/5/96, MB  
 SET P.K./WASHER  
 10/29/96, MRC  
 FD P.K./WASHER  
 GPS, REF6  
 1/15/13, MC  
 GPS, REF7  
 6/6/14, EBW  
 MON.BOX SET  
 GPS, FINREF6  
 8/7/14, JLL



# O.D.O.T. DISTRICT 2 SURVEY OFFICE

PERSONNEL \_\_\_\_\_

REFERENCE NO. 6

SHEET 5 OF 22

NOTES Barnhiser

H.C. Rausas

DATE 8-5-96

ROUTE SR 19

R.C. Hones

WEATHER SUNNY +70°F

COUNTY OTTAWA

TEMP. +70°F

TOWNSHIP SALEM

SECTION 20

T & M R 15 E

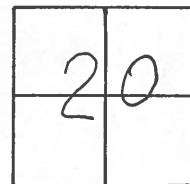
TYPE MONUMENT PK & WASHER

ON SURFACE - ~~BELOW~~ YES

~~LEFT~~ & PAV'T. - ~~RIGHT~~ YES 1.5 N. OF & E.

10.8 TO LT EDGE PAVEMENT

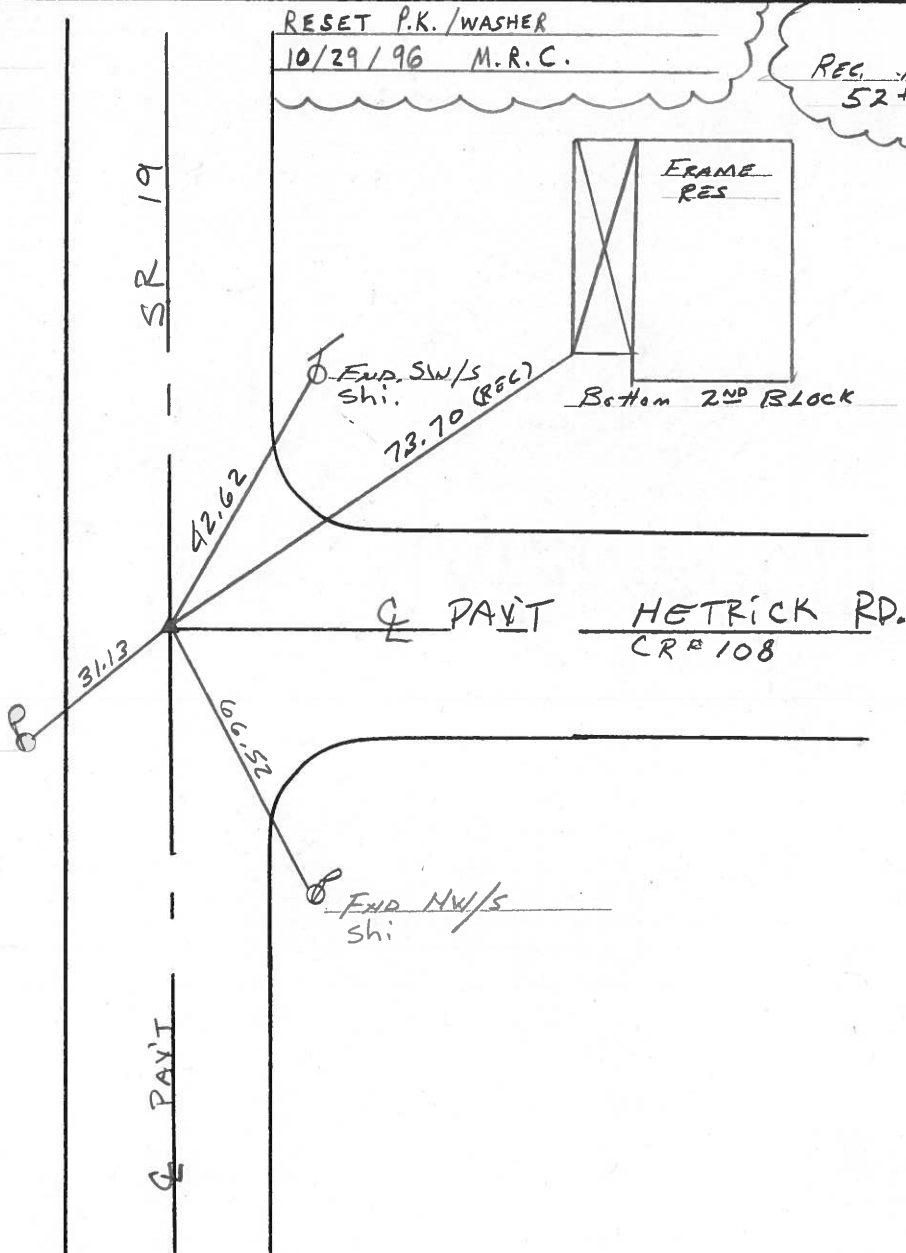
S.L.M. 53+00



RECORD  
 $\Delta = 00^{\circ} 13' 30''$   
 P.I.  
 MINE SPECK ATOP  
 P.K. BELOW SURFACE

RESET P.K./WASHER  
 10/29/96 M.R.C.

REC. 1924 PLAN (99)  
 52+95.85



# O.D.O.T. DISTRICT 2 SURVEY OFFICE

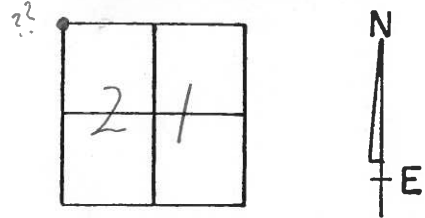
PERSONNEL

NOTES CRONIN  
 H.C. RIPPLE  
 R.C. GEYMAN

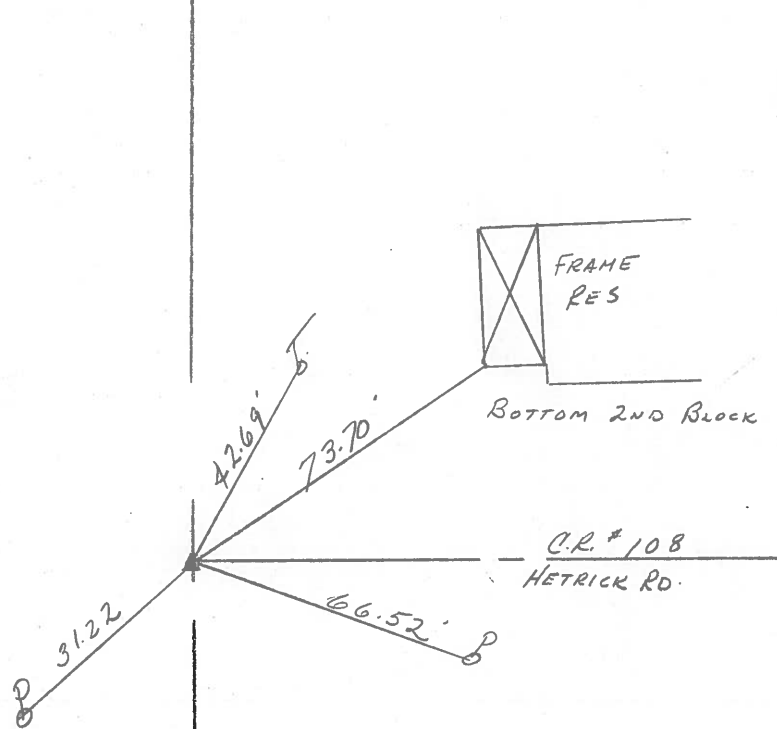
REFERENCE NO. 6  
 DRAWN 4/14/89  
 DATE 4/18/89  
 WEATHER OVERCAST  
 TEMP. 42°

SHEET 6 OF         
 ROUTE #19  
 COUNTY OTTAWA  
 TOWNSHIP SALEM  
 SECTION 21  
 T. 6 N. R. 15 E.

TYPE MONUMENT P.K. & WASHER  
 ON SURFACE - BELOW         
 LEFT - ☉ PAV'T. - RIGHT         
 TO        EDGE PAVEMENT  
 S.L.M. 1.00 ±      <sup>1924</sup> 52+95.85 (99.1)



$\Delta = 00^{\circ}13'30''$  RT. PLAN  
P.F.  
MINE SPIKE ATOP  
P.K. BELOW SURFACE



County OTTAWA S.R. 19

Date 7-23-81

Township SALEM

Weather clear

Section 16, 17, 20, 21

Temp. + 75°

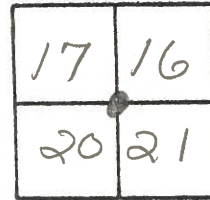
T8N, R15E

Personnel Hoffman

Householder

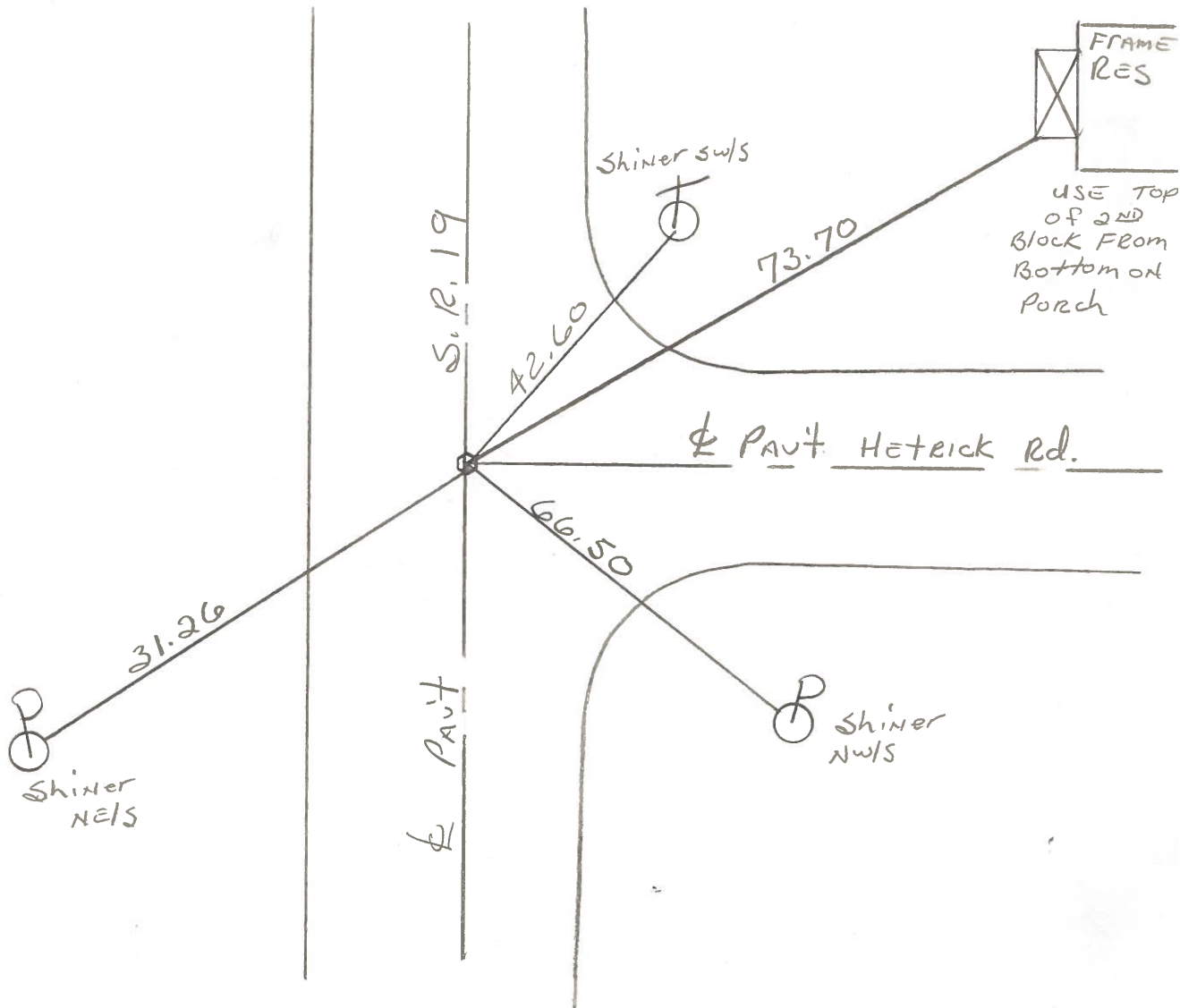
Loehrke

#6



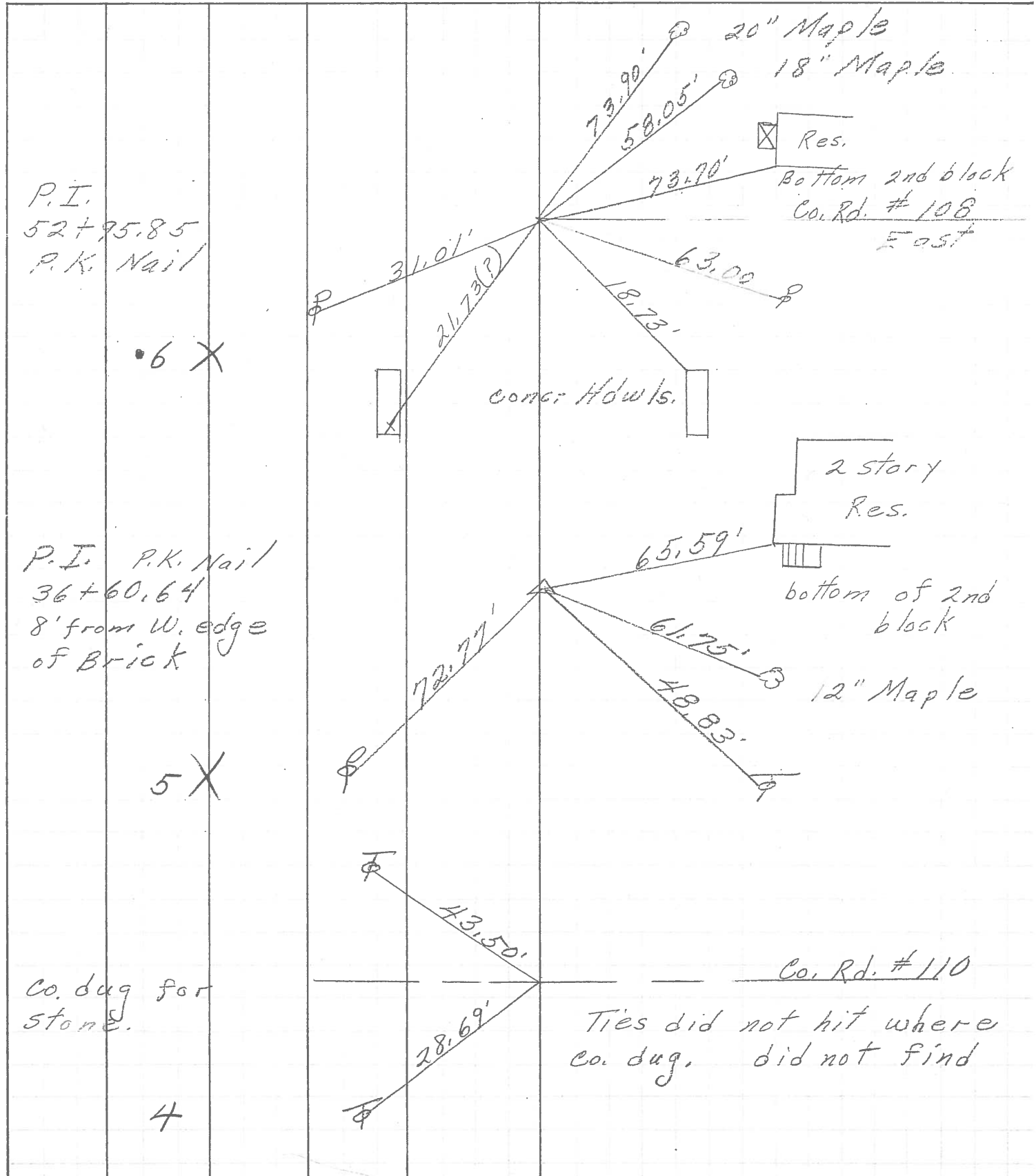
Fd. small spk 2" below surface, set 2' 6" RADIE NAILS

ON & PAUT. S.R. 19 & HETRICK  
12.7' TO W. EP. SR 19



P. I. STA. 52 + 95.85 ~ Rec.

PERSONNEL	TITLE	PERSONNEL	TITLE
COUNTY <u>Ottawa</u>		DATE <u>5-4-71</u>	
S. R. <u>19</u>		WEATHER _____	
SEC. <u>20 &amp; 21</u>		TEMP. _____	
DESCRIPTION <u>Sandusky Co. Line to Oak Harbor</u>			JOB NO. _____
	LEFT	CENTER LINE	RIGHT



PERSONNEL TITLE PERSONNEL TITLE

Schneider \_\_\_\_\_  
 Mosser \_\_\_\_\_  
 Barbour \_\_\_\_\_  
 Potts \_\_\_\_\_

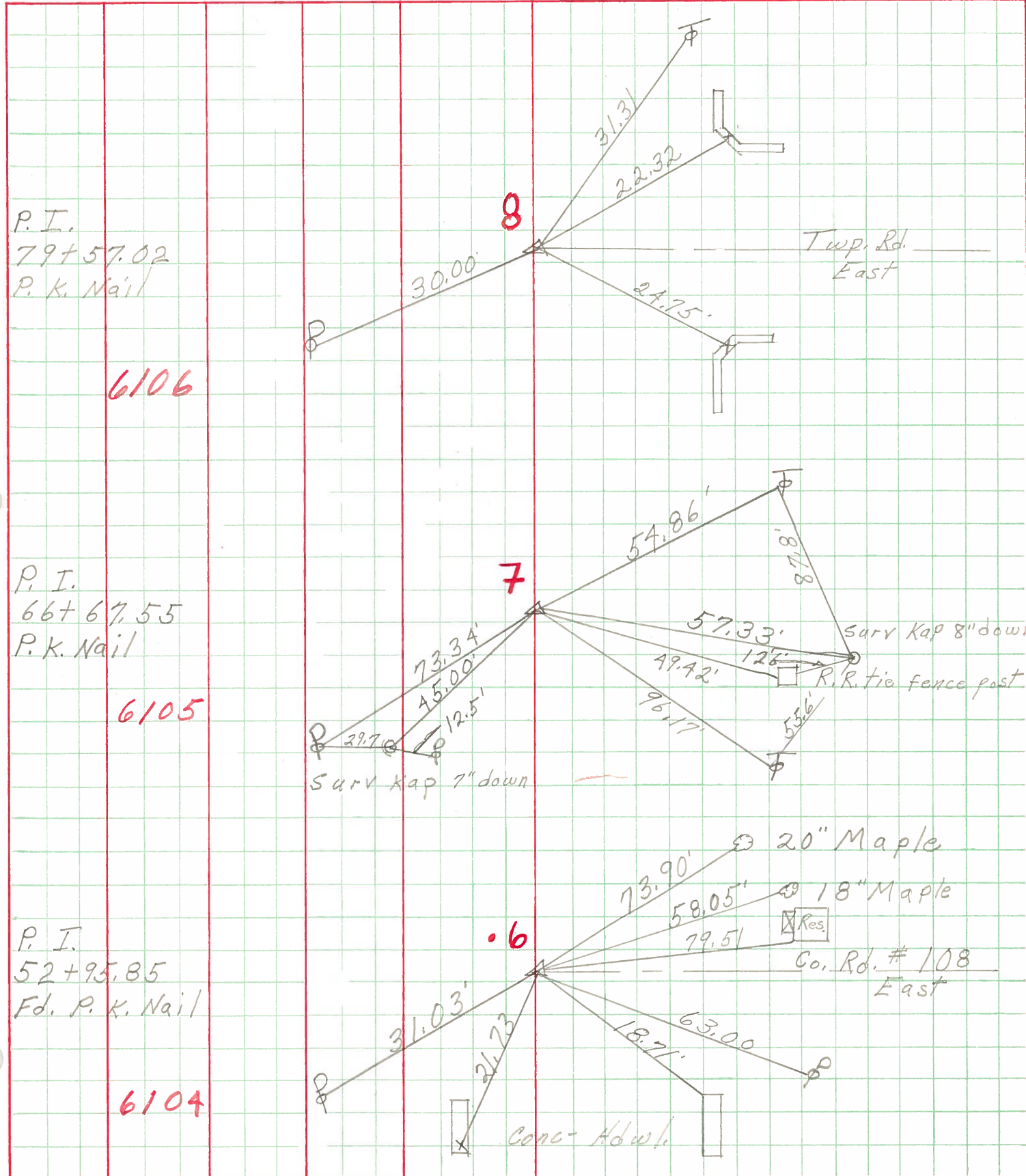
COUNTY Ottawa DATE 5-10-68

S. R. 19 WEATHER Fair

SEC. San. Co. Line - North TEMP. 60°

DESCRIPTION Ties for Control Points JOB NO. \_\_\_\_\_

LEFT CENTER LINE RIGHT



P. I.  
 79+57.02  
 P. K. Nail

6106

P. I.  
 66+67.55  
 P. K. Nail

6105

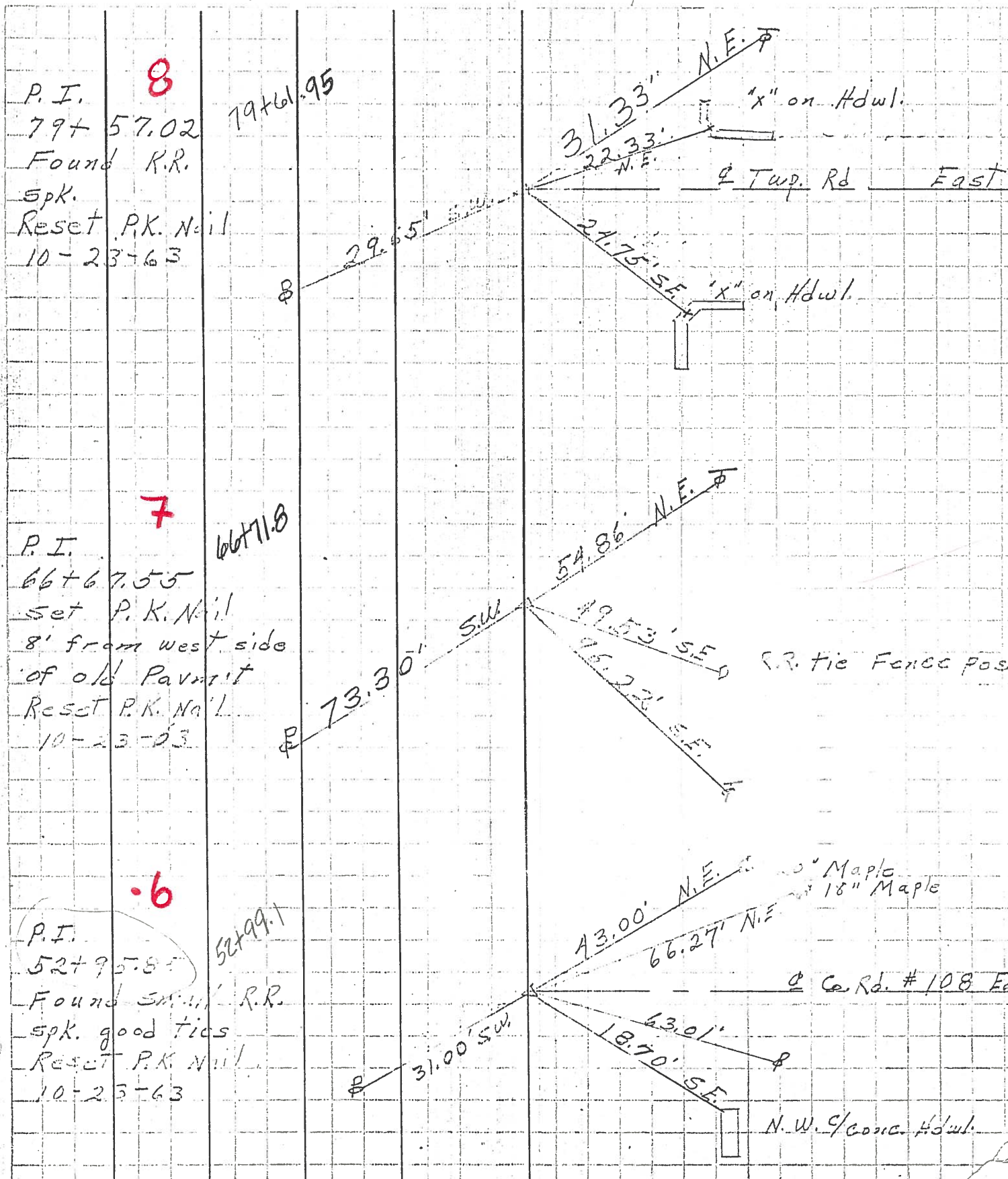
P. I.  
 52+95.85  
 Fd. P. K. Nail

6104

PERSONNEL	TITLE	PERSONNEL	TITLE
Schneider		Schultz	
Messer			
Kowalski			
Zahn			

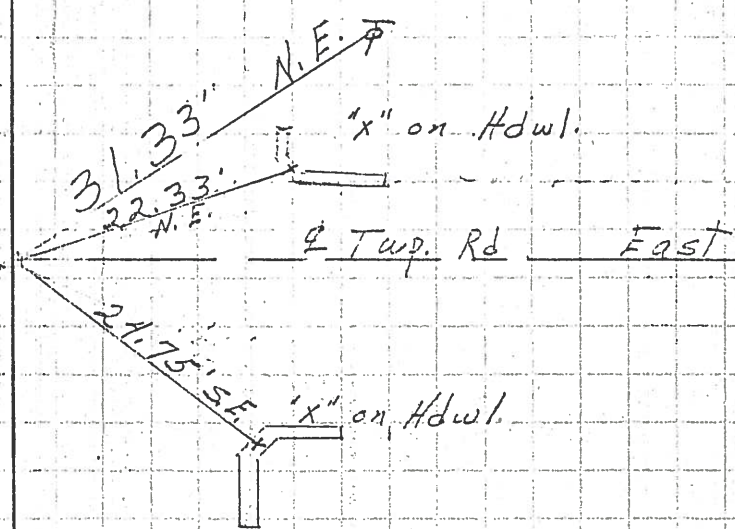
COUNTY Ottawa DATE 3-4-63  
 S. R. # 19 WEATHER Fair  
 SEC. Sandy Mount G. Hill - North TEMP. 30°

DESCRIPTION Ties for Control Points JOB NO. \_\_\_\_\_



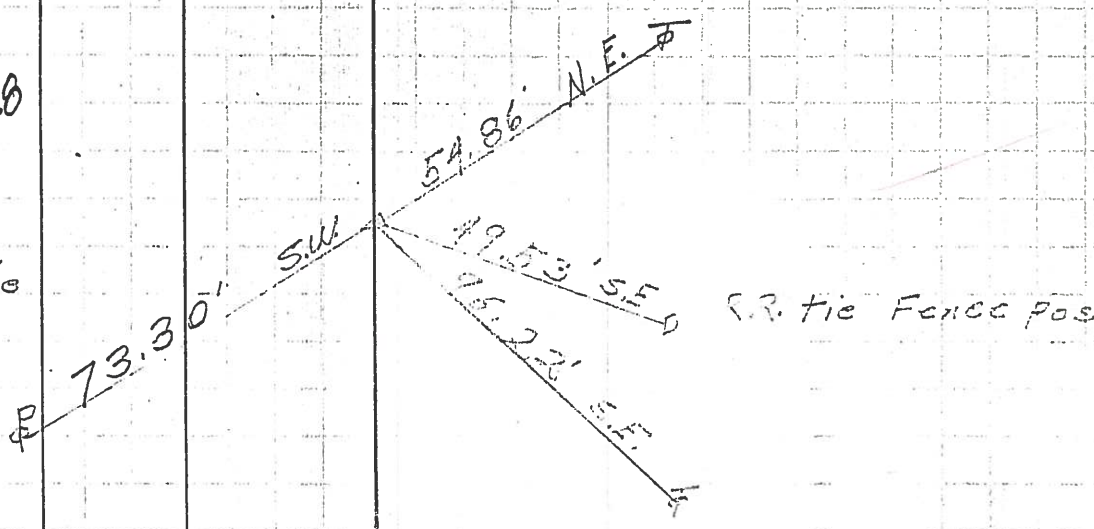
**8**  
 P.I. 79+57.02  
 Found R.R. spk.  
 Reset P.K. Nail  
 10-23-63

79+61.95



**7**  
 P.I. 66+67.55  
 Set P.K. Nail  
 8' from west side  
 of old Pavment  
 Reset P.K. Nail  
 10-23-63

66+71.8



**6**  
 P.I. 52+99.1  
 Found small R.R. spk. good ties  
 Reset P.K. Nail  
 10-23-63

52+99.1

