

O.D.O.T. DISTRICT 2 SURVEY OFFICE (USE ONLY)

PERSONNEL \_\_\_\_\_ REFERENCE NO. 7 SHEET 8 OF 23

NOTES	<u>LEU</u>	DATE	<u>6/6/14</u>	ROUTE	<u>SR 19</u>
H.C.	<u>WESTFALL</u>	WEATHER	<u>SUNNY</u>	COUNTY	<u>OTTAWA</u>
R.C.	<u>RHOADES</u>	TEMP.	<u>65°</u>	TOWNSHIP	<u>SALEM</u>
	<u>MEYER</u>			SECTION	<u>17</u>
				T <u>6</u> N	R <u>15</u> E

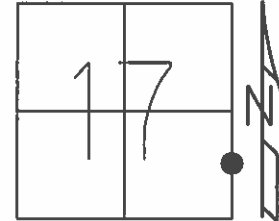
TYPE MONUMENT MAG/WASHER

ON SURFACE - ~~BELOW~~ ON \_\_\_\_\_

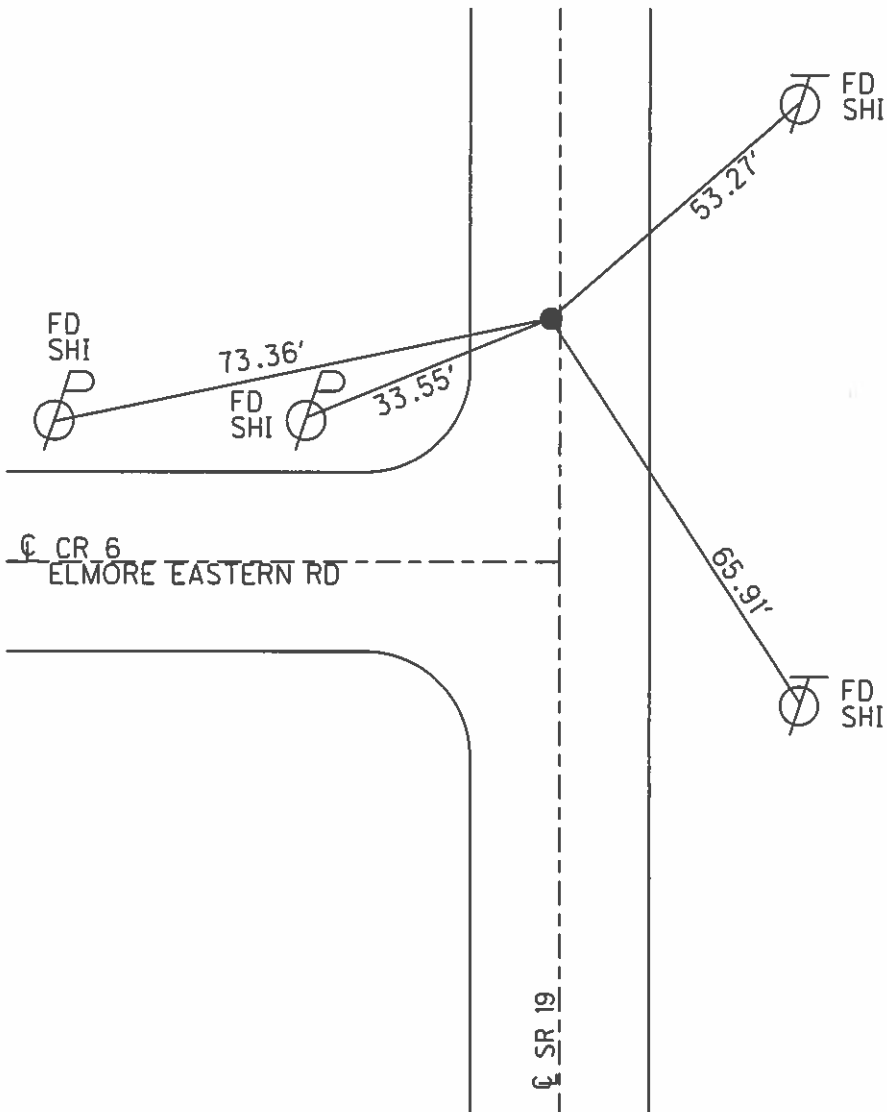
LEFT - ℄ PAV'T - ~~RIGHT~~ 0.8', 44' N. OF ℄ W.  
10.5' TO LT. EDGE PAVEMENT

S.L.M. 66+67.04

GRID: NORTHING: 659853.592 EASTING: 1791715.874



RECORD: P.I.  
 STA. 66+57.55  
 $\Delta = 0^{\circ}16' RT$   
 P.K./WASHER ATOP  
 P.K.NAIL  
 FD P.K./WASHER  
 8/5/96, MB  
 SET P.K./WASHER  
 10/29/96, MRC  
 SET MAG/WASHER  
 GPS, REF7  
 1/15/13, MC  
 FD MAG/WASHER  
 GPS, REF8  
 6/6/14, EBW  
 SET MAG/WASHER  
 GPS, FINREF7  
 7/31/14, JLL



O.D.O.T. DISTRICT 2 SURVEY OFFICE

PERSONNEL \_\_\_\_\_

REFERENCE NO. 7

SHEET 6 OF 22

NOTES Barnhiser

H.C. Russos

DATE 8-5-96

ROUTE SR 19

R.C. Hanes

WEATHER Sunny

COUNTY OTTAWA

TEMP. +70°

TOWNSHIP SALEM

SECTION 17

T6 N R15 E

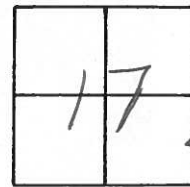
TYPE MONUMENT P.K. & WASHER

ON SURFACE - ~~BELOW~~ Yes

LEFT- & PAV'T. - ~~RIGHT~~ 0.5 44' N. OF &W.

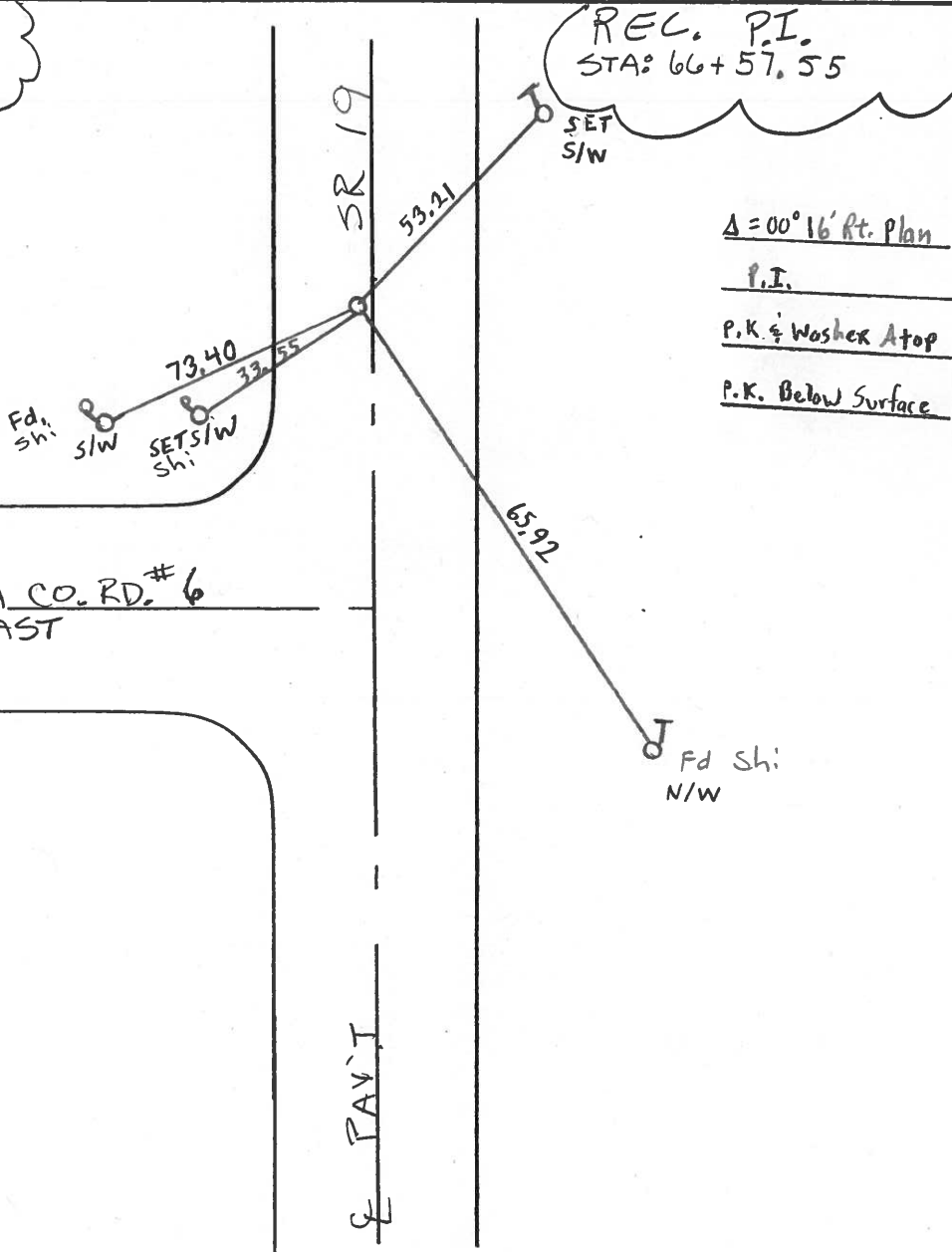
10.5 TO LT EDGE PAVEMENT

S.L.M. 66+73



RESET: P.K/WASHER  
10-29-96 M.R.C.

REC. P.I.  
STA: 66+57.55



$\Delta = 00^{\circ} 16'$  Rt. Plan  
P.I.  
P.K. & Washer Atop  
P.K. Below Surface

&W PAV'T OTTAWA CO. RD. #6  
ELMORE EAST

&W PAV'T

# O.D.O.T. DISTRICT 2 SURVEY OFFICE

PERSONNEL \_\_\_\_\_

REFERENCE NO. 7

SHEET 7 OF \_\_\_\_\_

NOTES CROWIN

DRAWN 4/14/89

H.C. RIPPLE

DATE 4/18/89

R.C. GEYMAN

WEATHER OVERCAST

ROUTE 19

COUNTY OTTAWA

TOWNSHIP SALEM

SECTION 16

T 6 N R 15 E

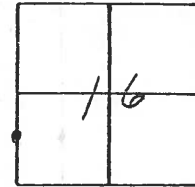
TYPE MONUMENT P.K. & WASHER

ON SURFACE - BELOW \_\_\_\_\_

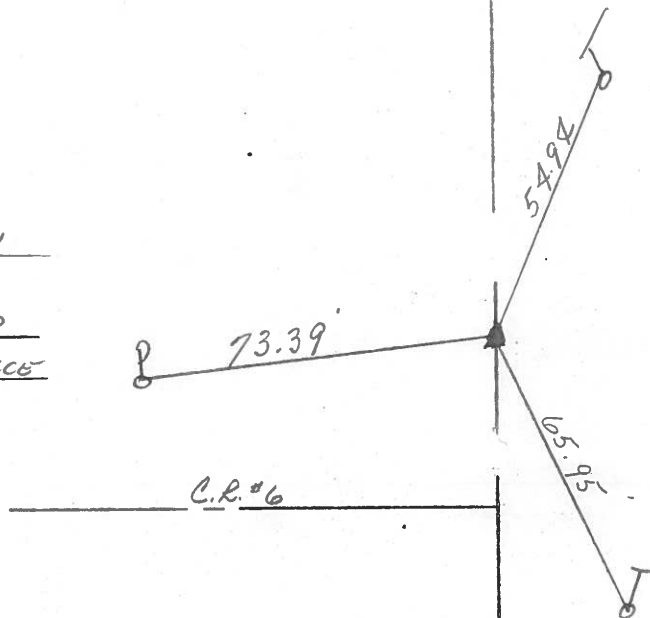
LEFT - CL PAV'T. - RIGHT \_\_\_\_\_

TO \_\_\_\_\_ EDGE PAVEMENT

S.L.M. \_\_\_\_\_ <sup>1924</sup> 66+57.55 (+71.8) PLAN



A = 00°16' Rt. PLAN  
P.I.  
P.K. & WASHER ATOP  
P.K. BELOW SURFACE



County Ottawa S.R. 19

Date 7-23-81

Township Salem

Weather clear

Section 17

Temp. +75°

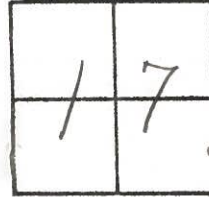
T8N, R15E

Personnel HOFFMAN

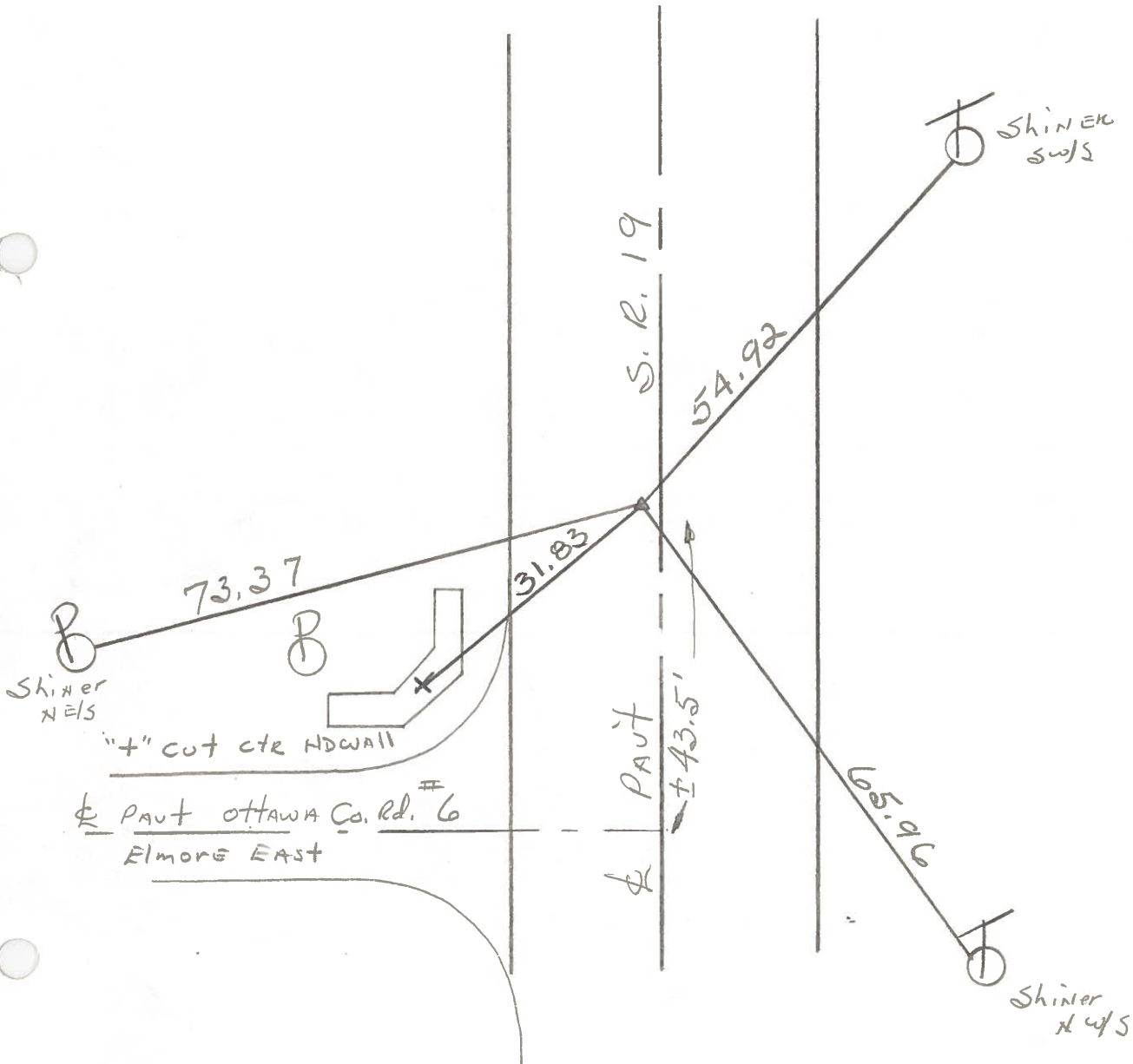
Householder

Loehrke

#7



Set P.K. NAIL & WASHER



P.I. STA. 66 + 57.55 - Rec.

PERSONNEL TITLE PERSONNEL TITLE

COUNTY Ottawa DATE 5-4-71

S. R. 19 WEATHER

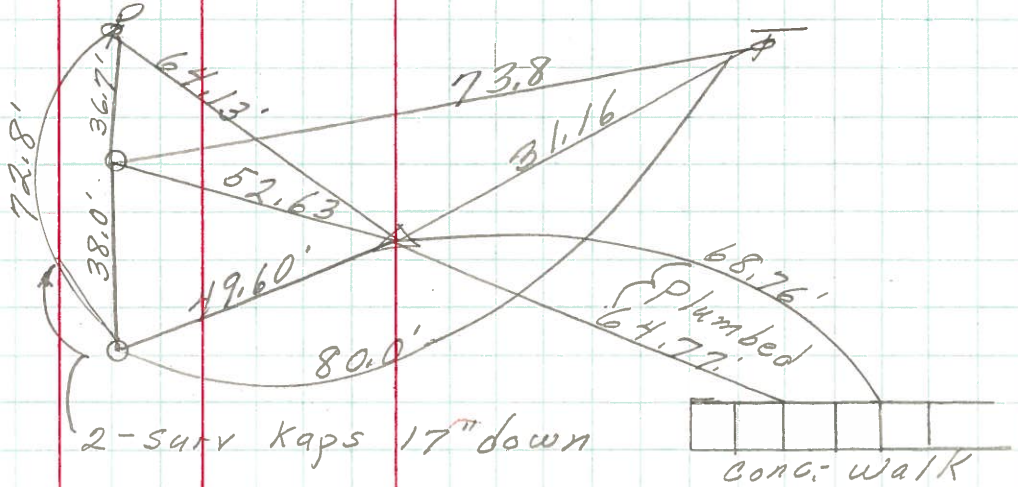
SEC. 17 & 16 TEMP.

DESCRIPTION Sandusky, Co. Line to Oak Harbor JOB NO.

LEFT CENTER LINE RIGHT

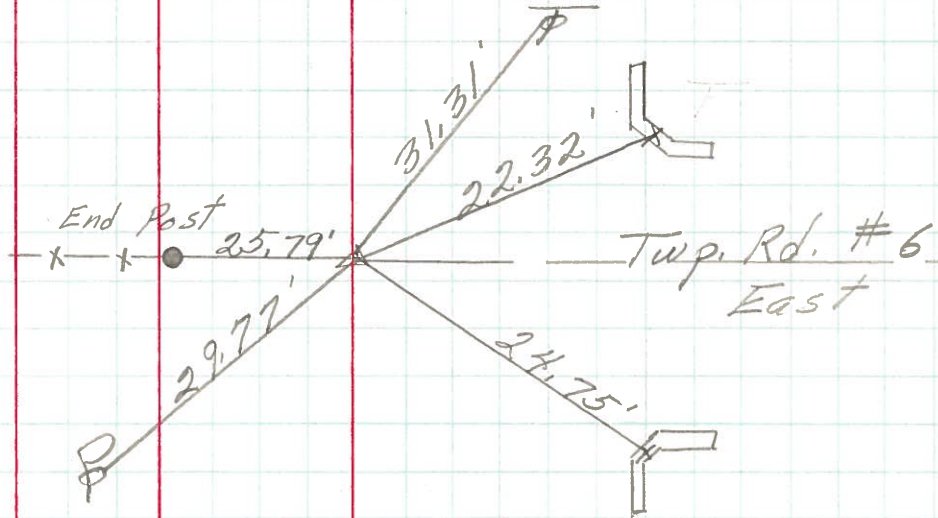
P.I.  
98+57.48  
P.K. Nail

9 X



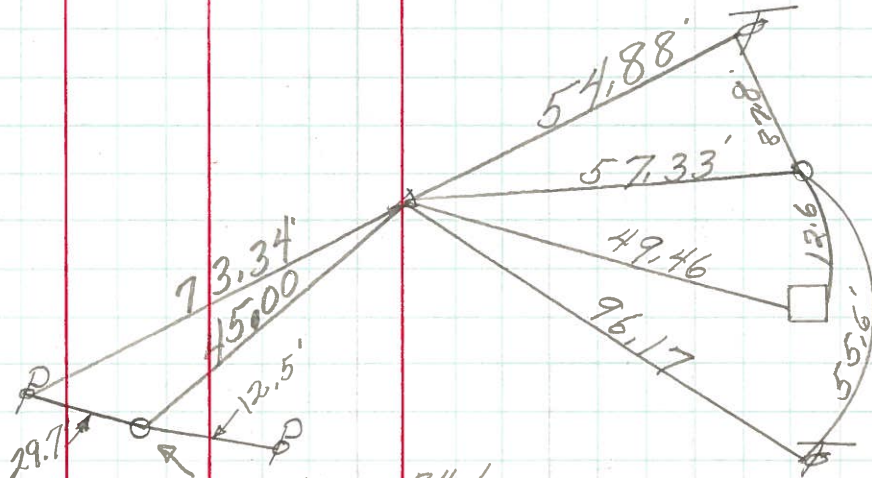
P.I.  
79+57.02  
P.K. Nail

8 X



P.I.  
66+57.55  
P.K. Nail

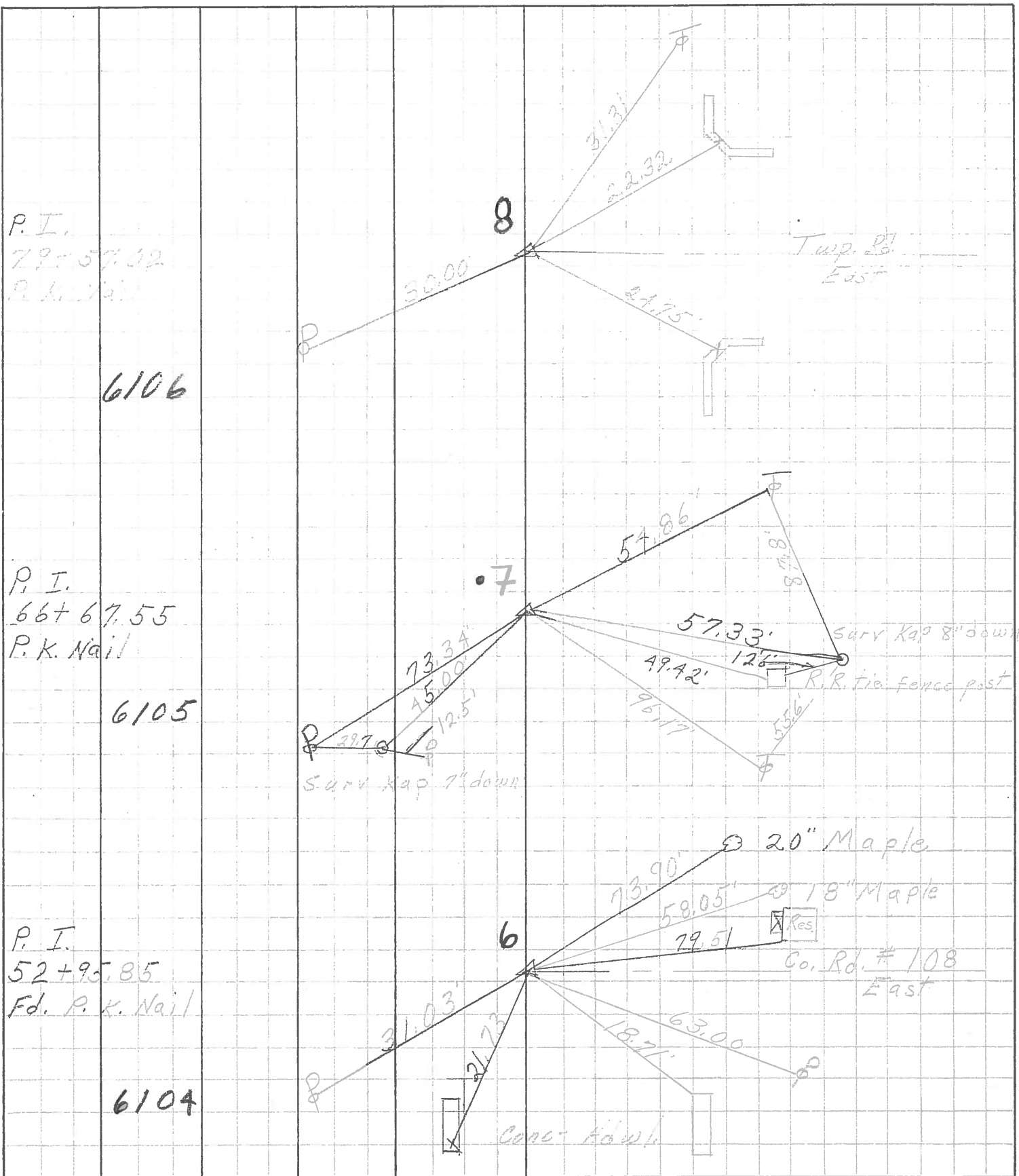
7 X



PERSONNEL	TITLE	PERSONNEL	TITLE
Schneider			
Mosser			
Barbour			
Potts			

COUNTY Ottawa DATE 5-10-68  
 S. R. 19 WEATHER Fair  
 SEC. San. Co. Line - North TEMP. 60°

DESCRIPTION Ties for Control Points JOB NO. \_\_\_\_\_



P. I.  
 79+57.02  
 P. K. Nail

6106

P. I.  
 66+67.55  
 P. K. Nail

6105

P. I.  
 52+95.85  
 Fd. P. K. Nail

6104

Twp. 23  
 East

Surv Kap 8" down  
 R.R. tie fence post

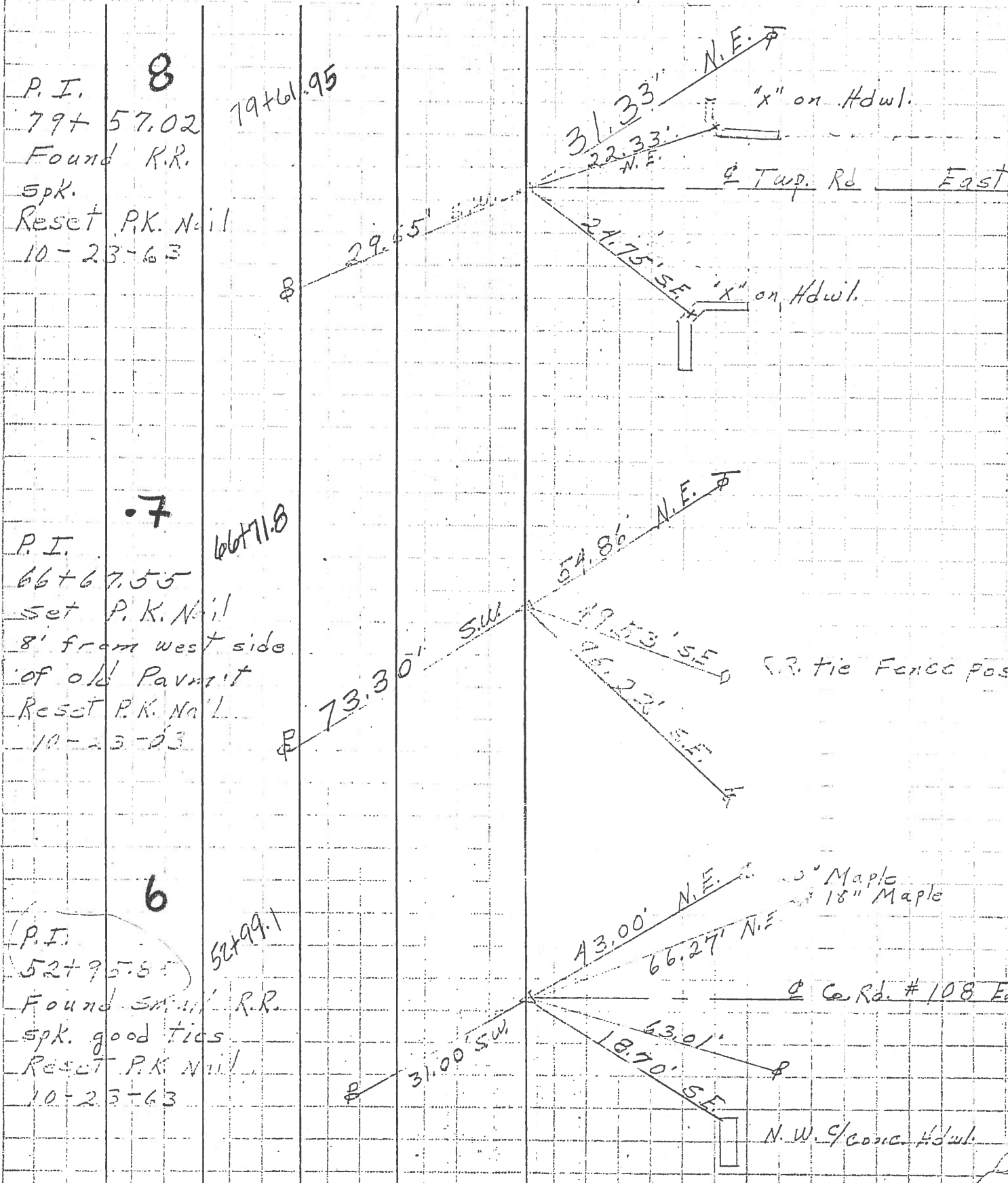
20" Maple  
 18" Maple  
 Res  
 Co. Rd. # 108  
 East

conc. Advl.

PERSONNEL	TITLE	PERSONNEL	TITLE
Schneider		Schwartz	
Messer			
Kowalski			
Zahn			

COUNTY Ottawa DATE 3-4-63  
 S. R. # 19 WEATHER Fair  
 Sandusky  
 SEC. Along S. Line - North TEMP. 30°

DESCRIPTION Ties for Control Points JOB NO. \_\_\_\_\_  
 LEFT CENTER LINE RIGHT



**8**  
 P.I. 79+57.02  
 Found R.R.  
 spk.  
 Resct P.K. Nail  
 10-23-63

79+61.95

**.7**  
 P.I. 66+67.55  
 set P.K. Nail  
 8' from west side  
 of old Pavmit  
 Resct P.K. Nail  
 10-23-63

66+71.8

**6**  
 P.I. 52+95.85  
 Found 5 1/2" R.R.  
 spk. good ties  
 Resct P.K. Nail  
 10-23-63

52+99.1