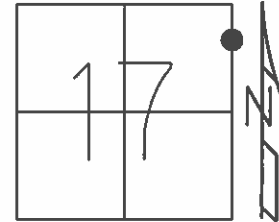


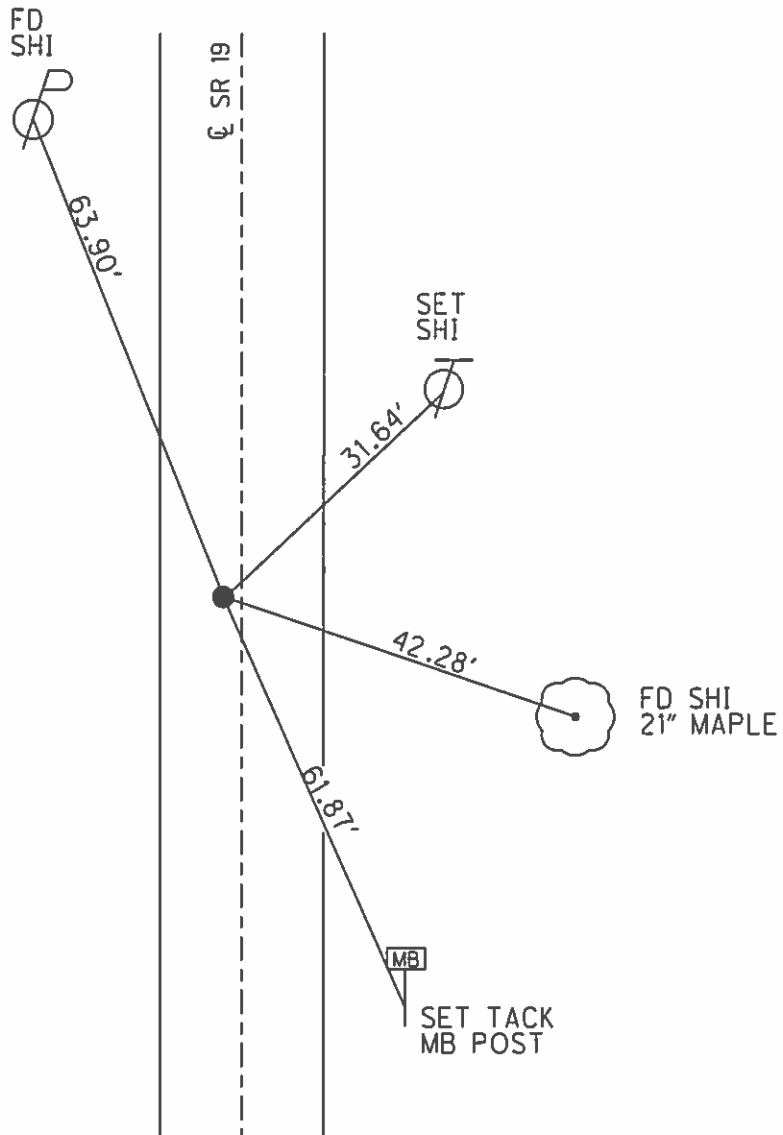
O.D.O.T. DISTRICT 2 SURVEY OFFICE (USE ONLY)

PERSONNEL \_\_\_\_\_ REFERENCE NO. 9 SHEET 10 OF 23  
 NOTES LEU DATE 6/6/14 ROUTE SR 19  
 H.C. WESTFALL WEATHER SUNNY COUNTY OTTAWA  
 R.C. RHOADES TEMP. 65° TOWNSHIP SALEM  
           MEYER SECTION 17  
   T 6 N R 15 E

TYPE MONUMENT P.K./WASHER  
 ON SURFACE - BELOW ON  
 LEFT - Q PAV'T - RIGHT 2.1'  
9.0' TO LT EDGE PAVEMENT  
 S.L.M. 98+57.28  
 GRID: NORTHING: 663043.812 EASTING: 1791726.215



RECORD: P.I.  
 STA. 98+57.48  
 $\Delta = 0^{\circ}03' RT$   
 P.K./WASHER ATOP  
 P.K.NAIL  
 FD P.K./WASHER  
 8/5/96, MB  
 SET P.K./WASHER  
 11/4/96, MRC  
 FD P.K./WASHER  
 GPS, REF9  
 1/15/13, MC  
 FD P.K./WASHER  
 GPS, REF10  
 6/6/14, EBW  
 SET MAG/WASHER  
 GPS, FINREF9  
 7/31/14, JLL



# O.D.O.T. DISTRICT 2 SURVEY OFFICE

PERSONNEL \_\_\_\_\_

REFERENCE NO. 9 SHEET 8 OF 22

NOTES Bornhiser

H.C. Russos

R.C. Hanes [initials]

DATE 8-5-96

WEATHER Sunny

TEMP. 170°

ROUTE SR 19

COUNTY OTTAWA

TOWNSHIP SALEM

SECTION 17

T&N R 15 E

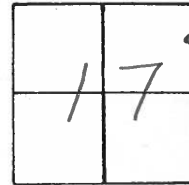
TYPE MONUMENT P.K. & Washer

ON SURFACE - BELOW Yes

LEFT- &lt; PAV'T. - RIGHT 1.5

9.3 TO LT EDGE PAVEMENT

S.L.M. 98+65



RESET P.K. / WASHER  
11-4-96 M.R.C

REC. P.I.  
STA: 98+57.48

$\Delta = 00^{\circ}03'$  Rt. PLAN

P.I. \_\_\_\_\_

P.K. and WASHER ATOP

P.K. Below Surface

Fd Shi  
S/E

63.96

SR 19

31.36

Fd Shi  
S/W

42.36

14" MAPLE

SET  
SHI  
N/W

50.25

14" ASH

SET  
SHI  
N/W

&lt; PAV'T

# O.D.O.T. DISTRICT 2 SURVEY OFFICE

PERSONNEL

NOTES CRONIN

H.C. RIPPLE

R.C. GEYMAN

REFERENCE NO. 9

DRAWN 4/14/89

DATE 4/18/89

WEATHER OVERCAST

TEMP. 42°

SHEET 9 OF     

ROUTE 19

COUNTY OTTAWA

TOWNSHIP SALEM

SECTION 16

T 6 N R 15 E

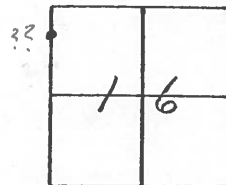
TYPE MONUMENT P.K. WASHER

ON SURFACE - BELOW     

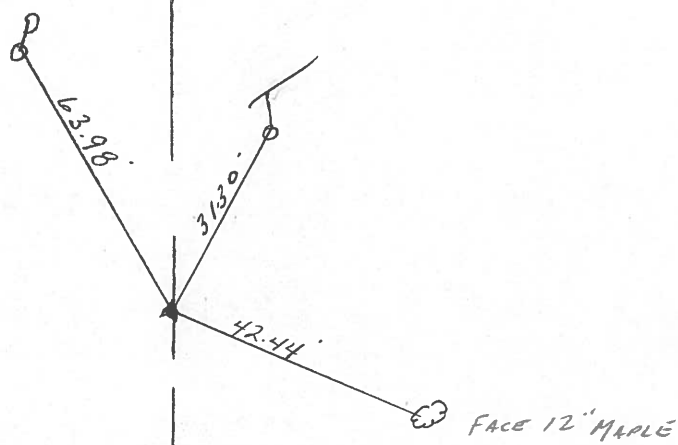
LEFT- & PAV'T. - RIGHT 1.0' ±

TO      EDGE PAVEMENT

S.L.M. 98+57.48 <sup>1924</sup> <sub>PLAN (+63.65)</sub>



Δ = 00°03' RT. PLAN  
P.I.  
PK AND WASHER AT OP  
PK BELOW SURFACE



County OTTAWA S.R. 19

Date 7-23-81

Township SALEM

Weather clear

Section 17

Temp. +75°

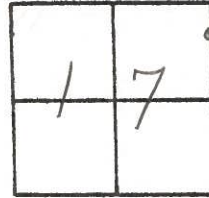
T&N, R&E

Personnel Hoffman

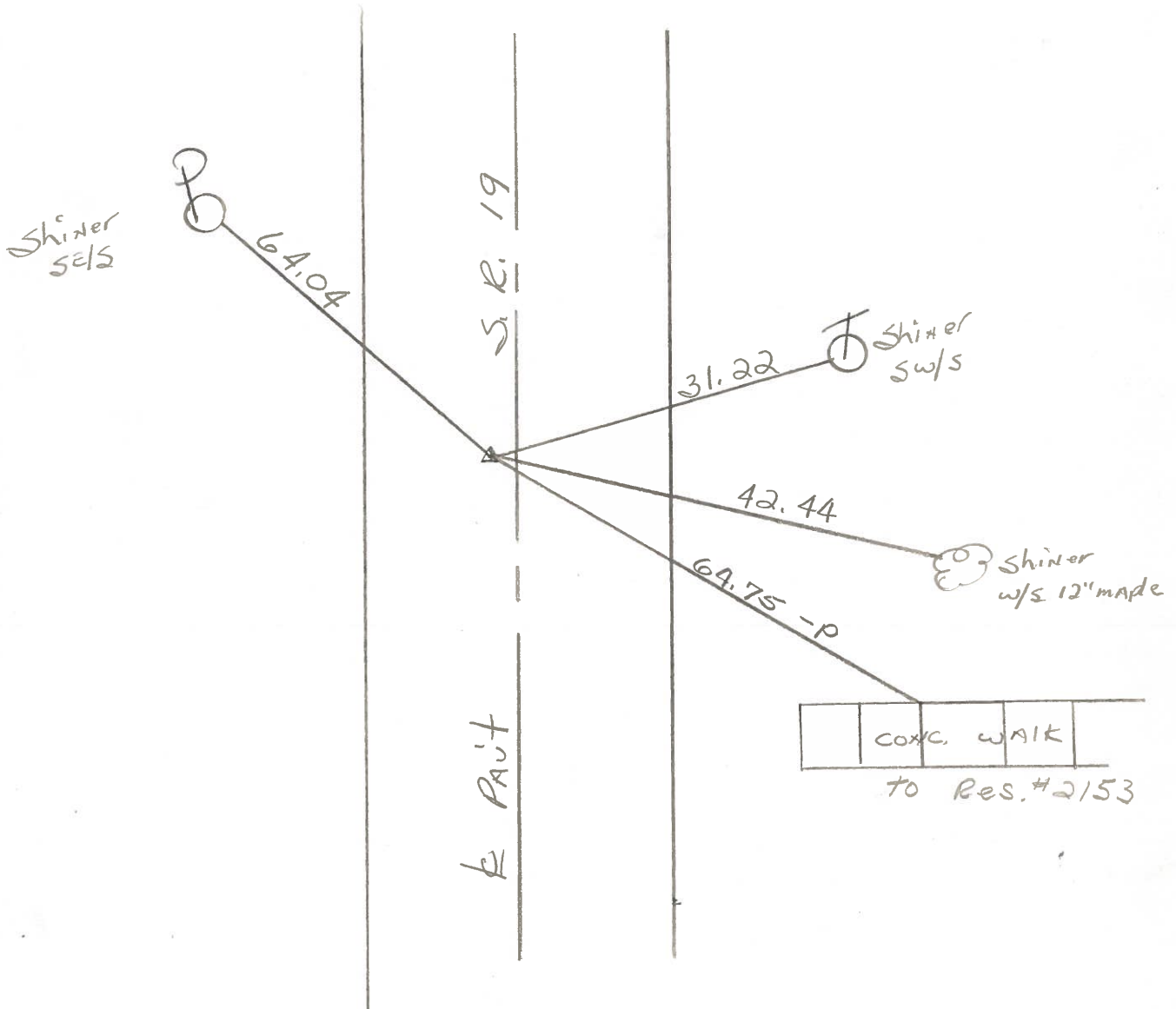
Householder

Loehrke

#9



SET P.K. Nail & Washer  
 1.1' w. of & PAUT  
 14.0' to W. EP.  
 11.0' to E. EP.



P.I. STA. 98+57.48 ~ Rec.

PERSONNEL TITLE PERSONNEL TITLE

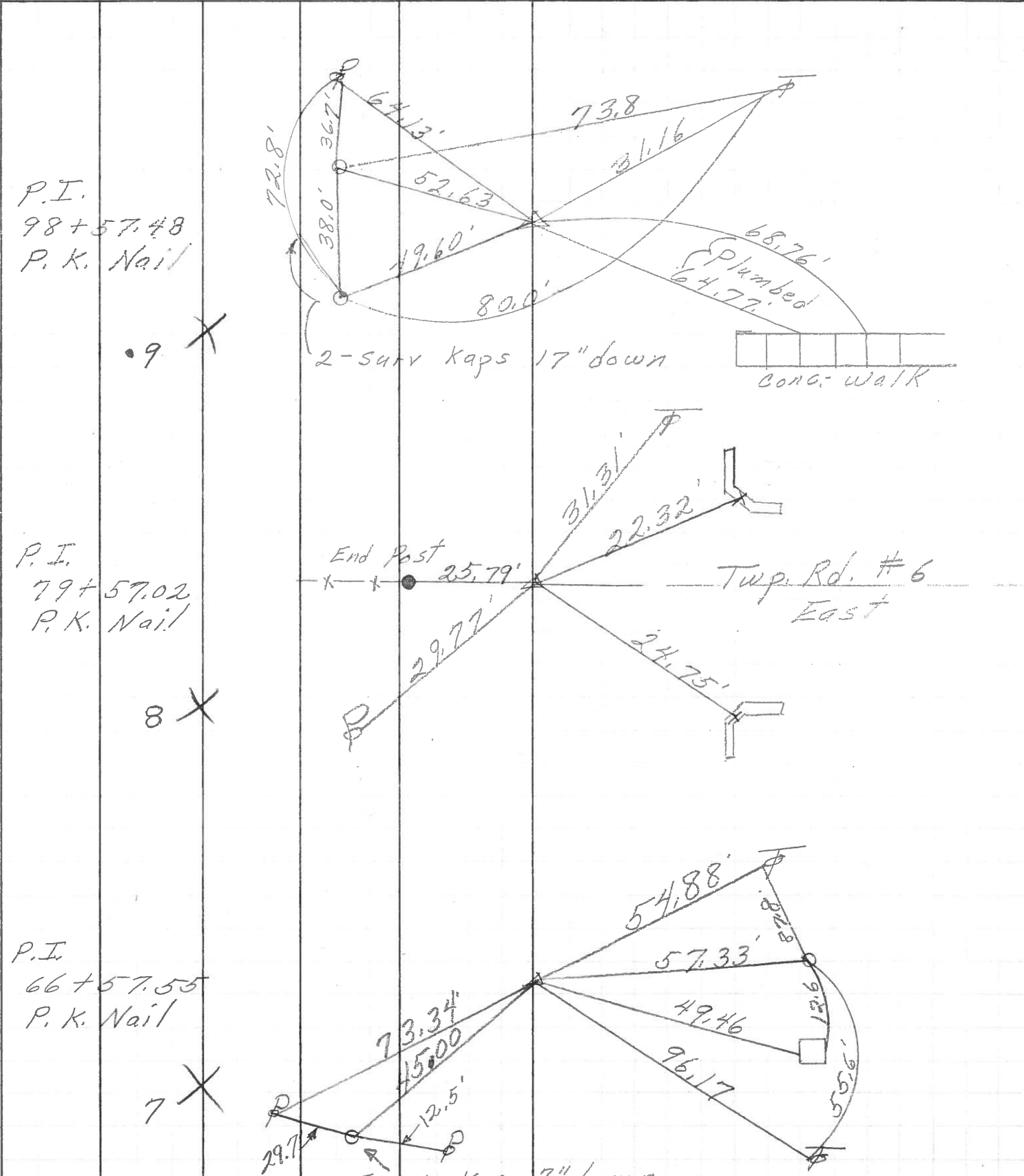
COUNTY Ottawa DATE 5-4-71

S. R. 19 WEATHER \_\_\_\_\_

SEC. 17 & 16 TEMP. \_\_\_\_\_

DESCRIPTION Sandusky, Co. Line to Oak Harbor JOB NO. \_\_\_\_\_

LEFT CENTER LINE RIGHT



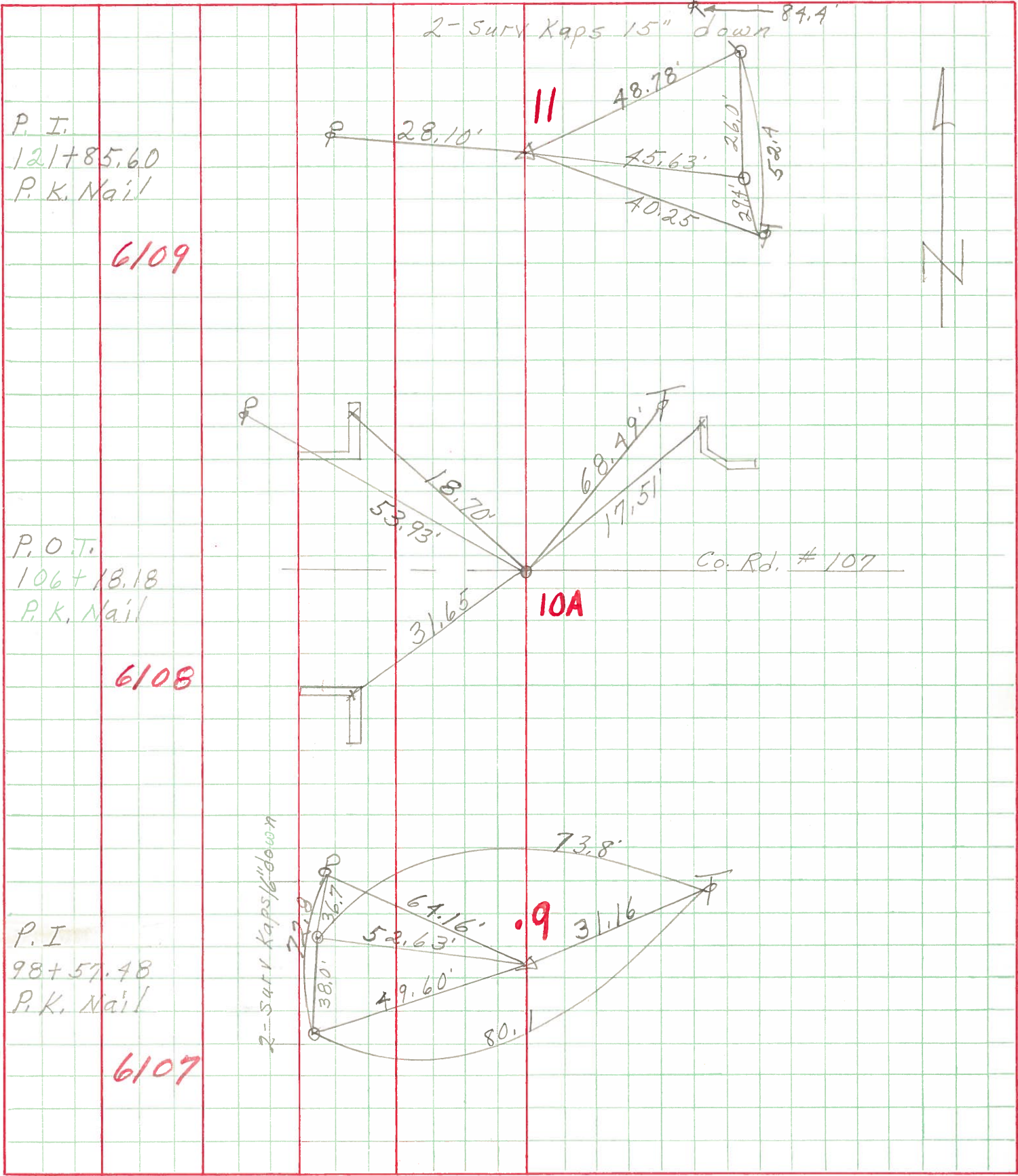
PERSONNEL TITLE PERSONNEL TITLE

COUNTY Ottawa DATE 5-10-68

Schneider  
Mosser  
Barbour  
Pott's

S. R. 19 WEATHER Fair  
SEC. San Co. Line - North TEMP. 60°

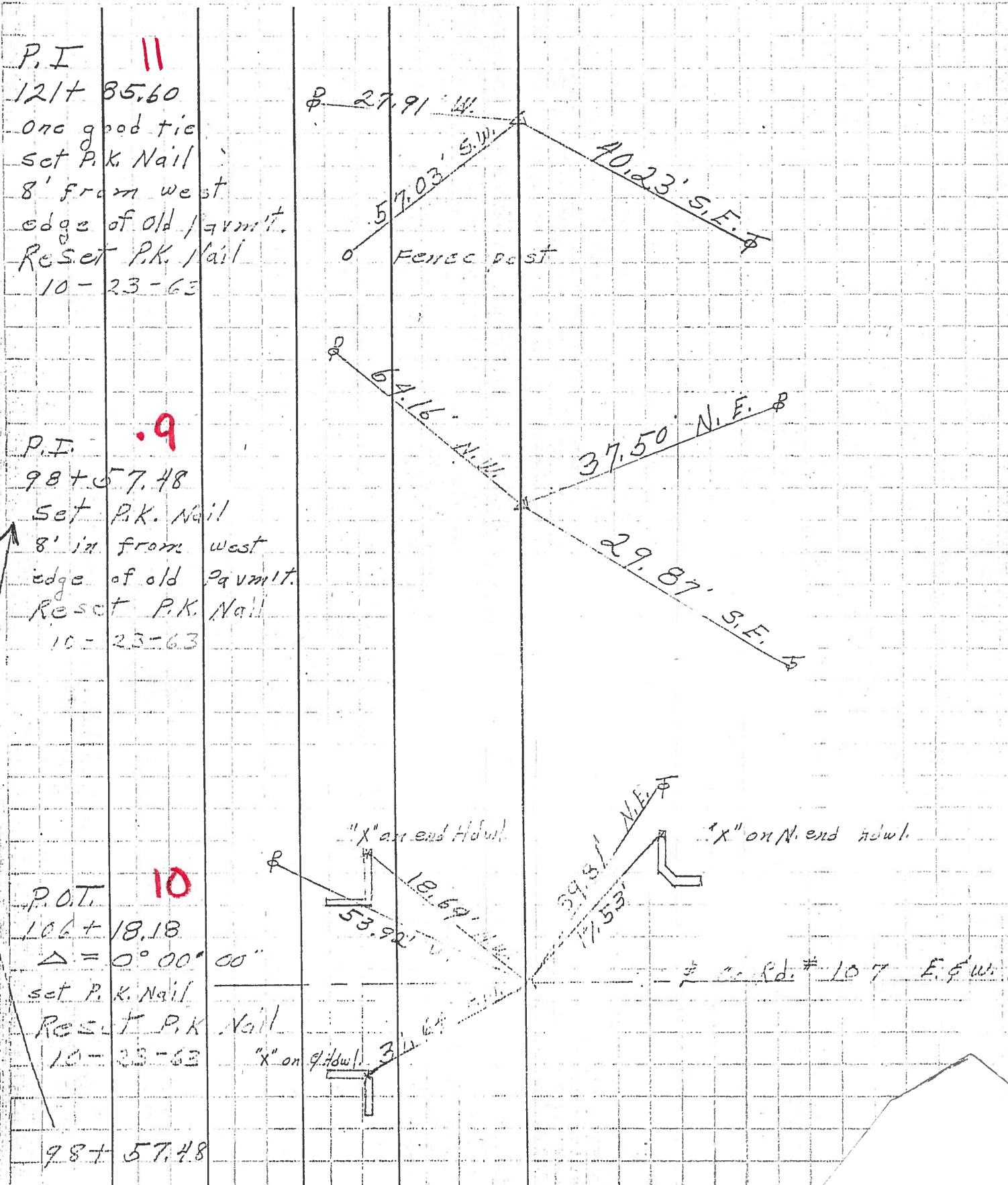
DESCRIPTION Ties for Control Points JOB NO. \_\_\_\_\_



PERSONNEL	TITLE	PERSONNEL	TITLE
Schneider			
S			
Crew			

COUNTY Ottawa DATE 2-19-63  
 S. R. # 19 WEATHER Fair  
 SEC. Ottawa Center - North TEMP. 26°

DESCRIPTION Ties for Central Section JOB NO. \_\_\_\_\_



P.I. 11  
 121+ 85.60  
 One good tie  
 Set P.K. Nail  
 8' from west  
 edge of old permit.  
 Reset P.K. Nail  
 10-23-63

P.I. 9  
 98+ 57.48  
 Set P.K. Nail  
 8' in from west  
 edge of old permit.  
 Reset P.K. Nail  
 10-23-63

P.O.T. 10  
 106+ 18.18  
 $\Delta = 0^\circ 00' 00''$   
 Set P.K. Nail  
 Reset P.K. Nail  
 10-23-63

98+ 57.48