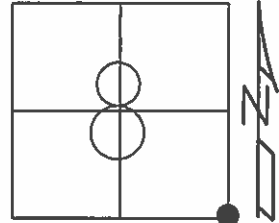


O.D.O.T. DISTRICT 2 SURVEY OFFICE (USE ONLY)

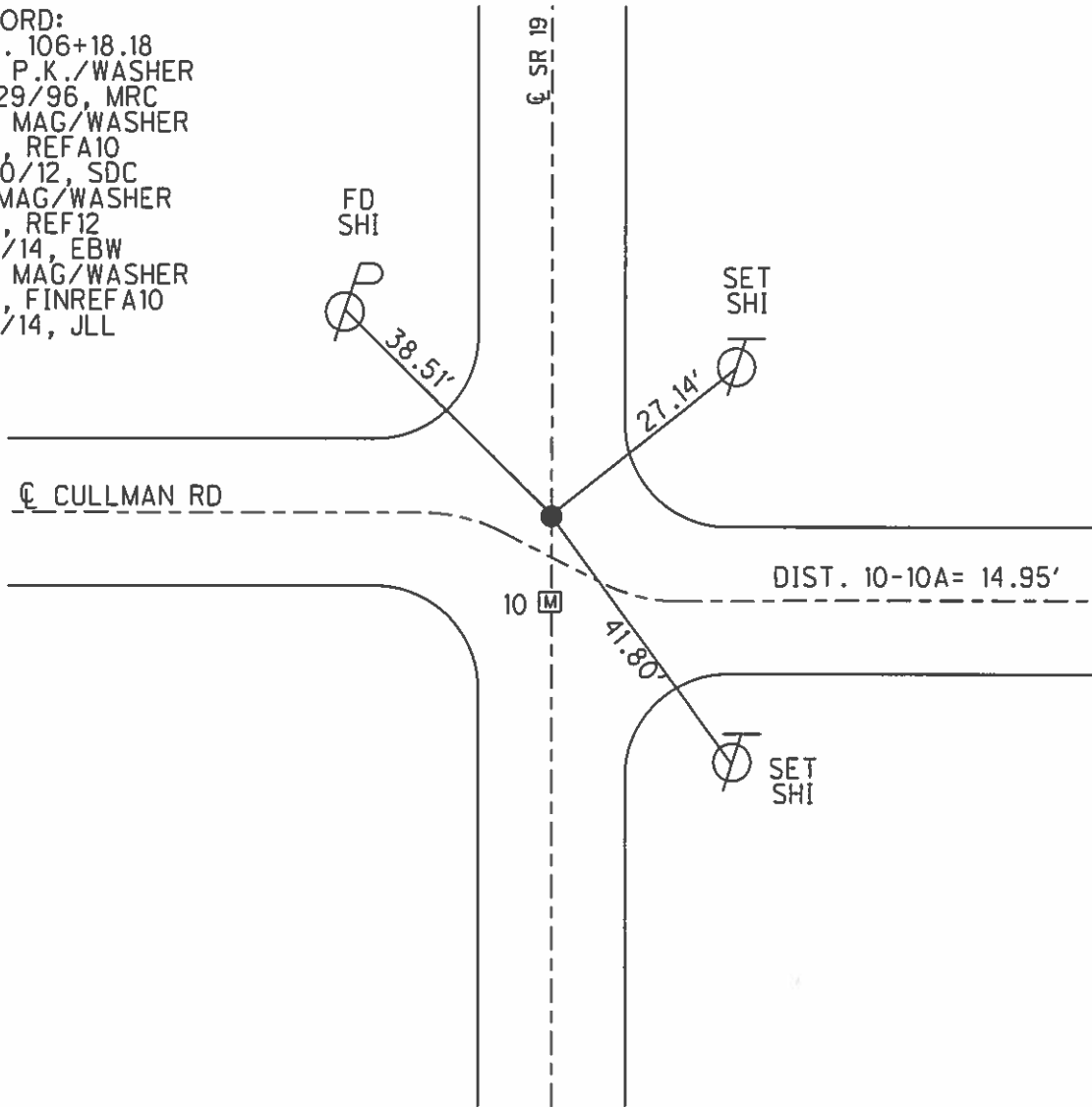
PERSONNEL	REFERENCE NO.	10 A	SHEET	12	OF	23
NOTES	MEYER	DATE	6/5/14	ROUTE	SR 19	
H.C.	HOMAN	WEATHER	SUNNY	COUNTY	OTTAWA	
R.C.	THOMAS	TEMP.	70°	TOWNSHIP	SALEM	
				SECTION	8	
				T. 6 N	R. 15 E	

TYPE MONUMENT MAG/WASHER
 ON SURFACE - ~~BELOW~~ ON
 LEFT - ℄ PAV'T - ~~RIGHT~~ 1.1'
 - TO - EDGE PAVEMENT
 S.L.M. 106+17.99



GRID: NORTHING: 663804.513 EASTING: 1791728.030

RECORD:
 STA. 106+18.18
 SET P.K./WASHER
 10/29/96, MRC
 SET MAG/WASHER
 GPS, REFA10
 7/20/12, SDC
 FD MAG/WASHER
 GPS, REF12
 6/6/14, EBW
 SET MAG/WASHER
 GPS, FINREFA10
 8/7/14, JLL



O.D.O.T. DISTRICT 2 SURVEY OFFICE (USE ONLY)

PERSONNEL

REFERENCE NO. 10 A

SHEET 2 OF 2

NOTES CODER

DATE 7/20/12

ROUTE SR 19

H.C. RHOADES

WEATHER CLOUDY

COUNTY OTTAWA

R.C. COUTCHER

TEMP. 70°

TOWNSHIP SALEM

SECTION 17

T 8 N R 15 E

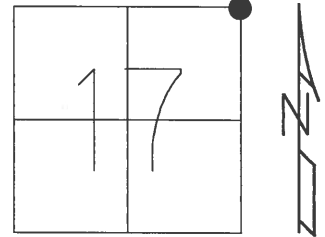
TYPE MONUMENT MAG NAIL / WASHER

ON SURFACE - ~~BELOW~~ ON

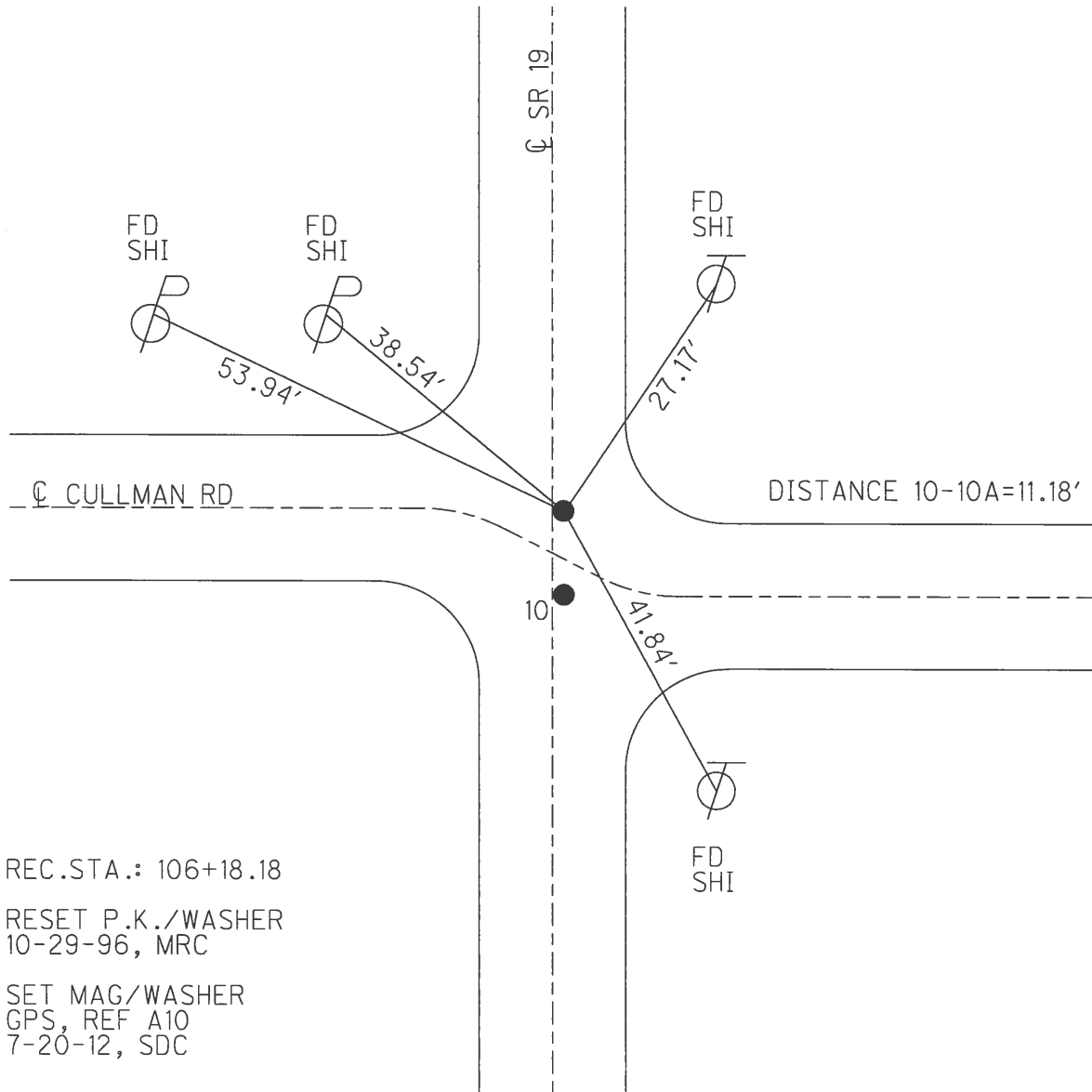
LEFT - Q PAV'T - ~~RIGHT~~ 1.1'

TO EDGE PAVEMENT

S.L.M. 106+27



Grid: Northing: 663804.502 Easting: 1791728.019



REC.STA.: 106+18.18

RESET P.K./WASHER
10-29-96, MRC

SET MAG/WASHER
GPS, REF A10
7-20-12, SDC

O.D.O.T. DISTRICT 2 SURVEY OFFICE

PERSONNEL _____

REFERENCE NO. 10

SHEET 9 OF 22

NOTES Barnhiser

H.C. Roussas III

R.C. HANES

DATE 8-5-96

WEATHER Sunny

TEMP. +70°F

ROUTE SR 19

COUNTY OTTAWA

TOWNSHIP SALEM

SECTION 17

T8N R15E

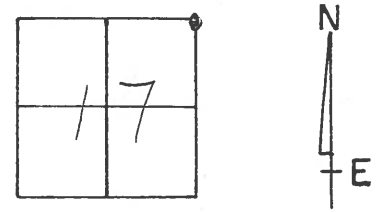
TYPE MONUMENT PK & WASHER, For A+B

ON SURFACE - BELOW YES

LEFT-☉ PAV'T. - RIGHT 1.1'

9.7 TO LT EDGE PAVEMENT

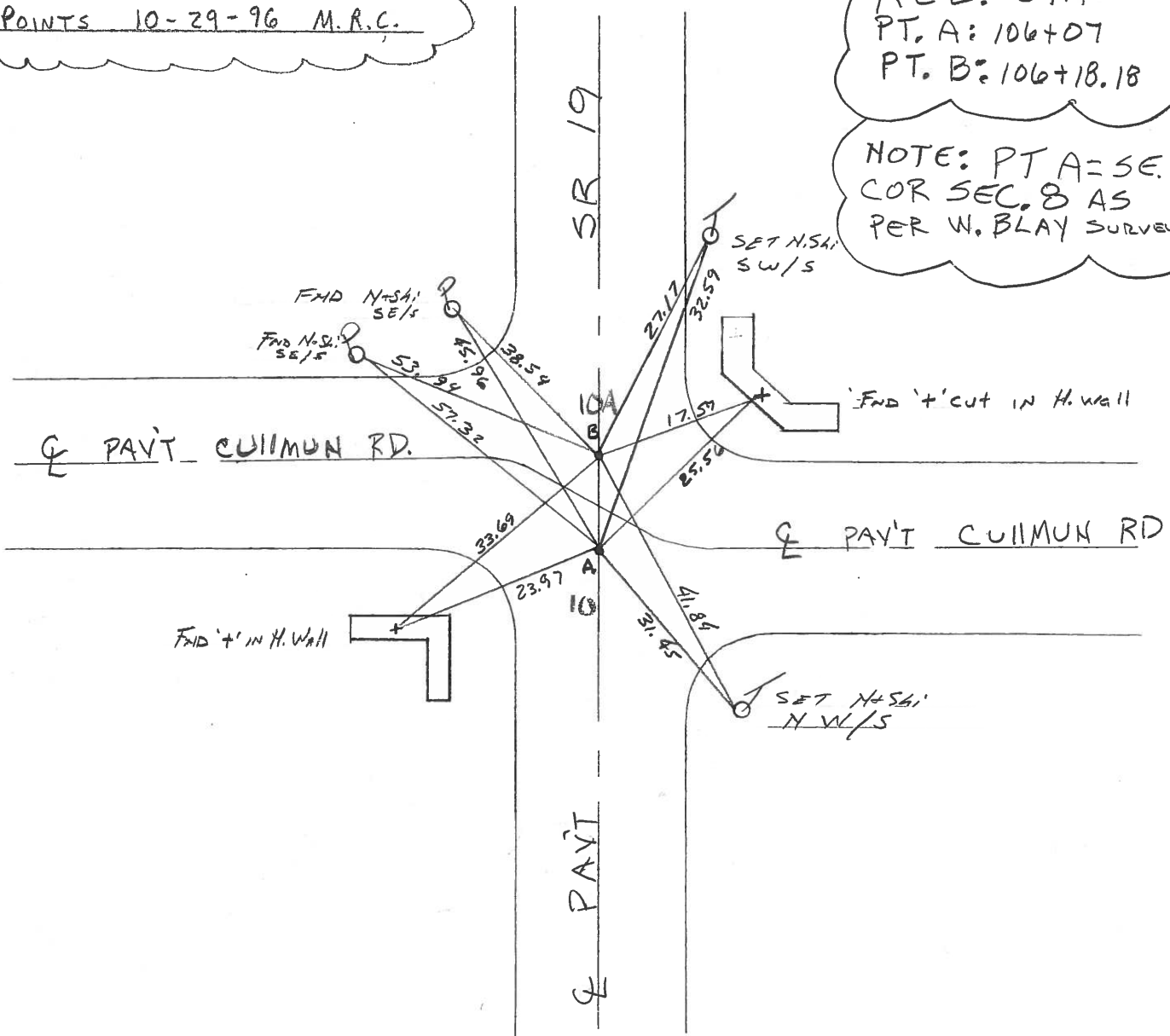
S.L.M. A-106+12 / B-106+27



RESET P.K. / WASHER AT BOTH POINTS 10-29-96 M.R.C.

REC. STA:
PT. A: 106+07
PT. B: 106+18.18

NOTE: PT A = SE COR SEC. 8 AS PER W. BLAY SURVEY



O.D.O.T. DISTRICT 2 SURVEY OFFICE

PERSONNEL _____

REFERENCE NO. 10 & 10A

SHEET 10 OF _____

NOTES CRONIN

DRAWN 4/14/89

H.C. RIPPLE

DATE 4/18/89

R.C. GEYMAN

WEATHER OVERCAST

TEMP. 42°

ROUTE #19

COUNTY OTTAWA

TOWNSHIP SALEM

SECTION 8, 9, 16, 17

T 6 N R 15 E

TYPE MONUMENT P.K. WASHER

ON SURFACE - BELOW 10'

LEFT - ☉ PAV'T. - RIGHT _____

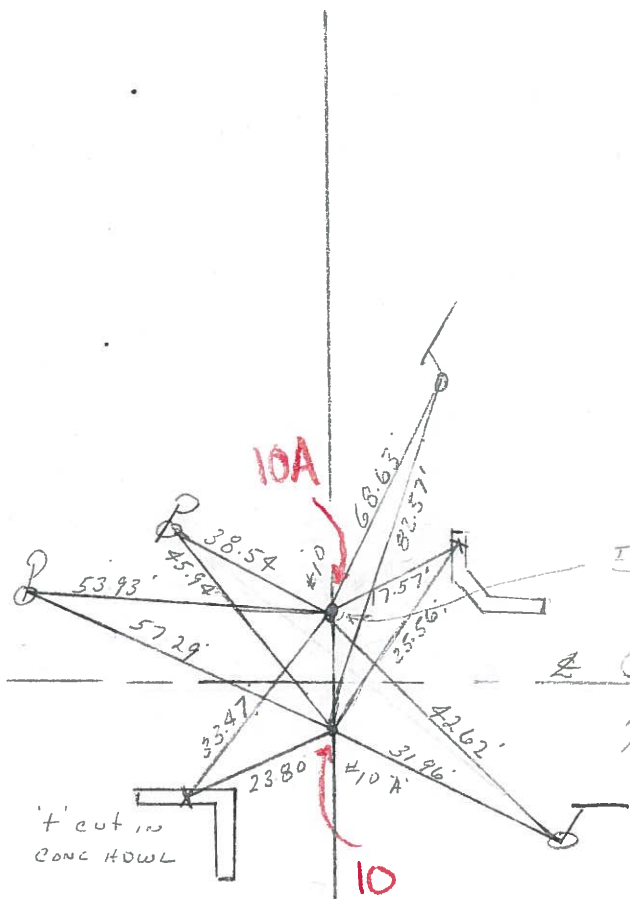
TO _____ EDGE PAVEMENT

S.L.M. 106718.18 (106725.7 1924 PLAN)

8	9
17	16



P.O.T.
P.K. WASHER ATOP P.K.
ATOP I.P.M. BELOW SURFACE



TIP PLAN 1924
CULLMAN RD.
Point 10 A = SEC. COR.
PER 1924 SURVEY

County OTTAWA S.R. 19

Date 7-23-81

Township SALEM

Weather clear

Section 9, 8, 17, 16

Temp. +75°

T&N, R&E

Personnel HOFFMAN
Householder
Loehrke

#10

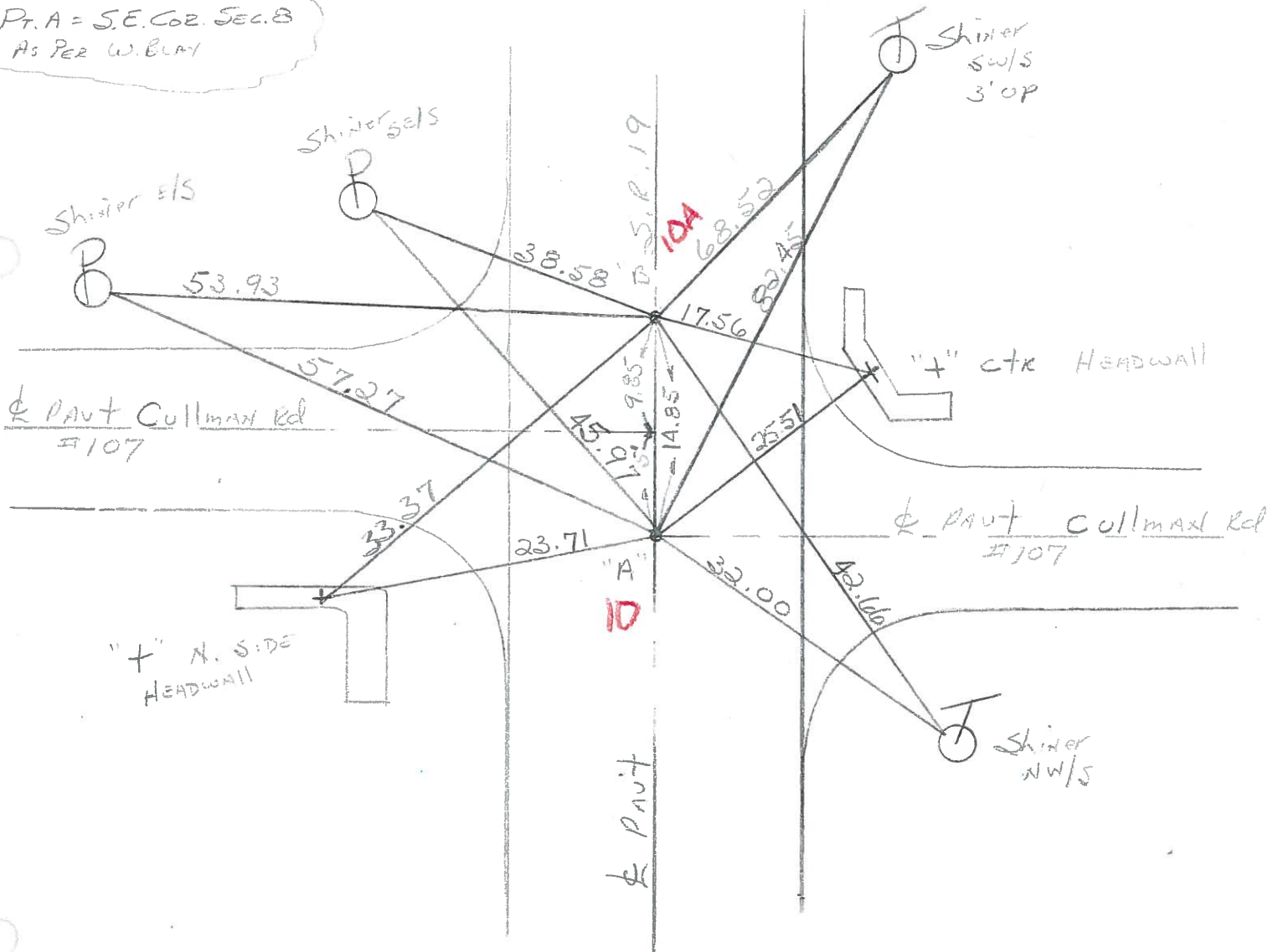
8	9
17	16



Pts. A & B. Set A.K. Nail & Washer
 1' w. of & PAUT S.R. 19

NOTE:

PT. A = S.E. COR. SEC. 8
 AS PER W. BLAY



PT. A STA 106 + 07 ~ Rec. 7

PT. B P.O.T. STA. 106 + 18.18

PERSONNEL TITLE PERSONNEL TITLE

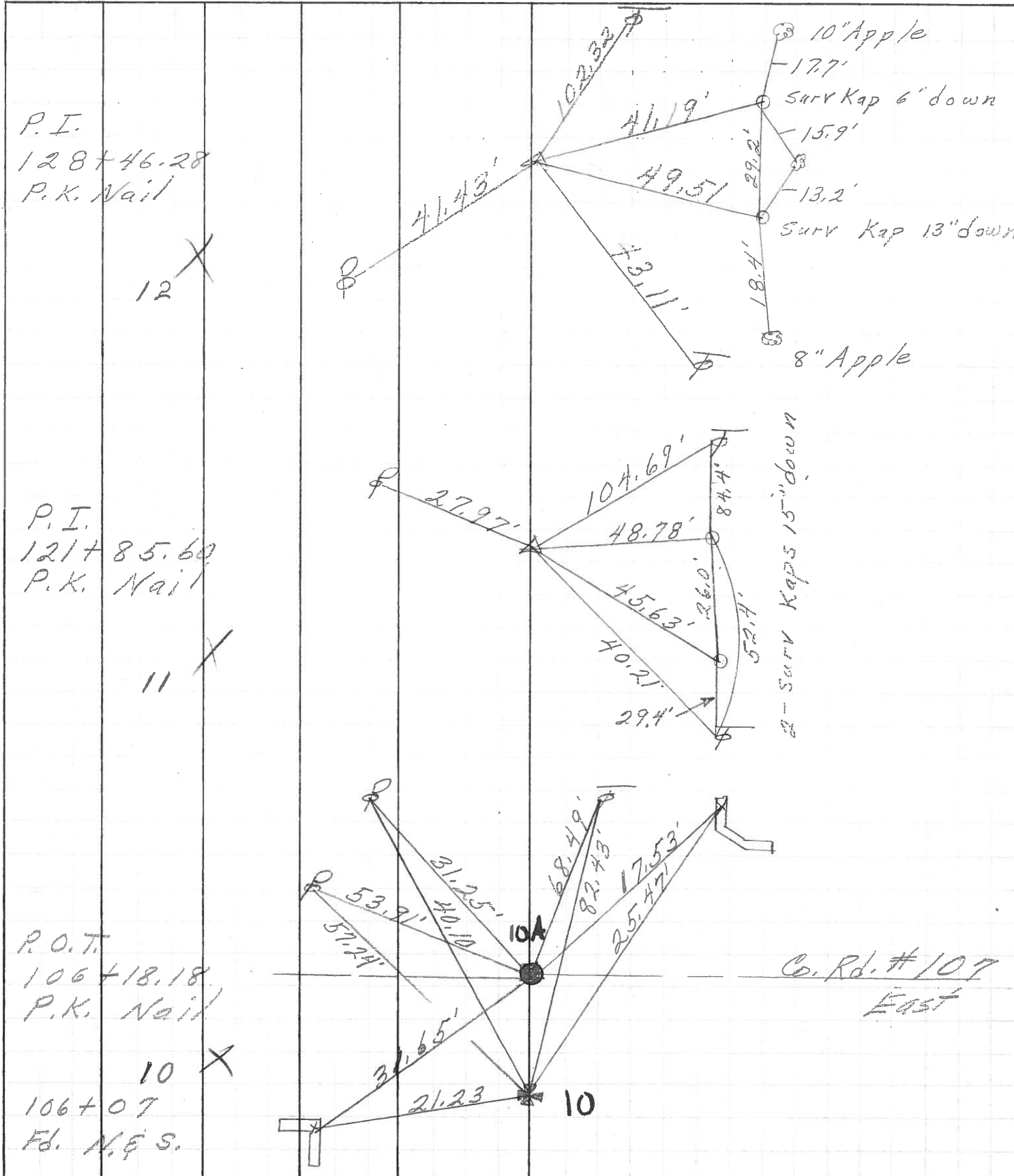
COUNTY Ottawa DATE 5-4-71

S. R. 19 WEATHER

SEC. 8 E 9 TEMP.

DESCRIPTION Sandusky, Co. Line to Oak Harbor JOB NO.

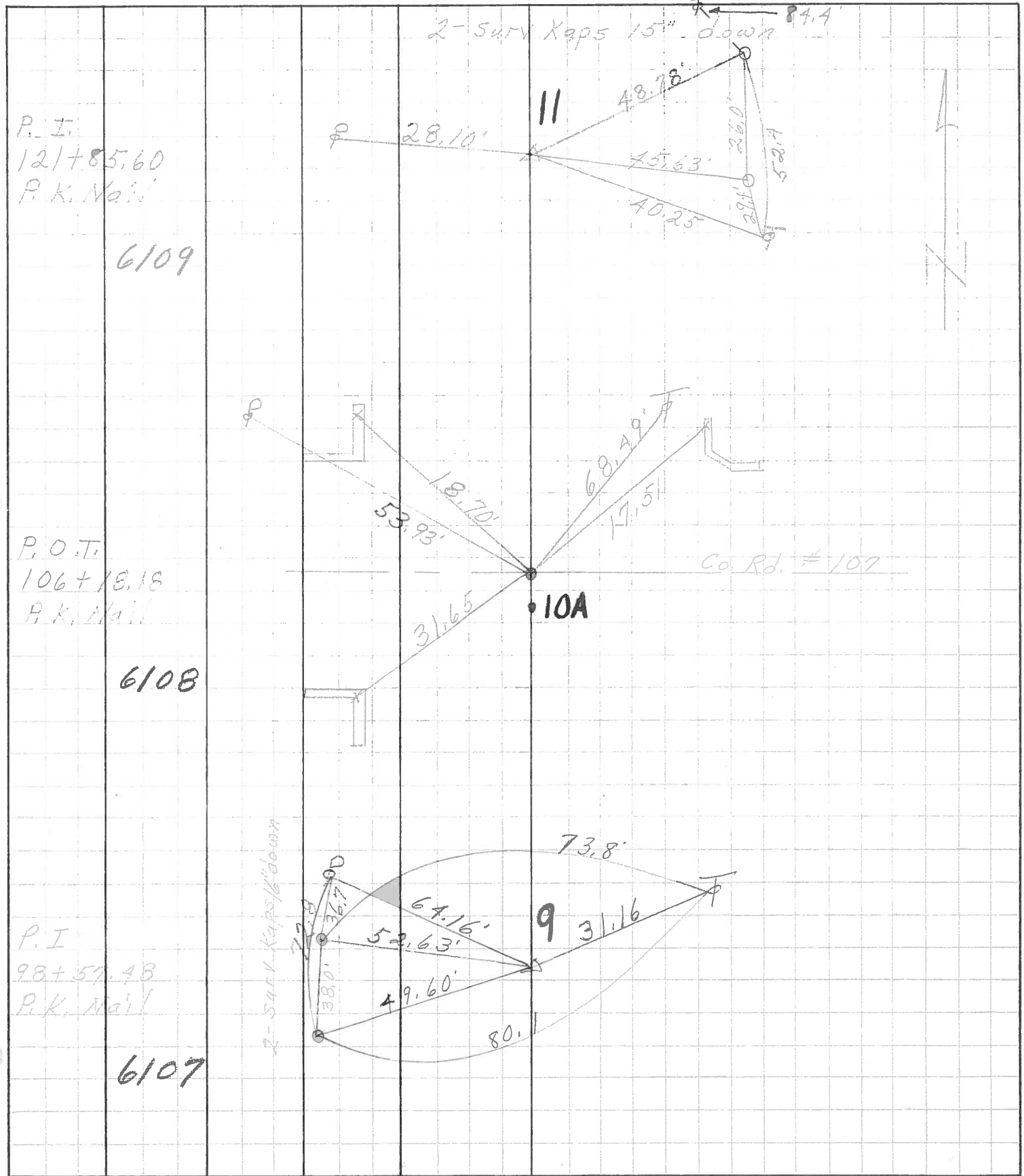
LEFT CENTER LINE RIGHT



PERSONNEL	TITLE	PERSONNEL	TITLE
Schneider			
Mosser			
Barbour			
Potts			

COUNTY Ottawa DATE 5-10-68
 S. R. 19 WEATHER Fair
 SEC. San Co. Line - North TEMP. 60°

DESCRIPTION Ties for Control Points JOB NO. _____



P. I.
 121+85.60
 P. K. Nail

6109

P. O. T.
 106+18.18
 P. K. Nail

6108

P. I.
 98+57.48
 P. K. Nail

6107