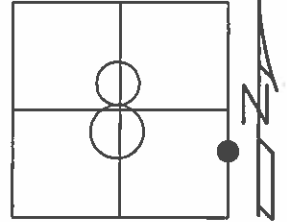


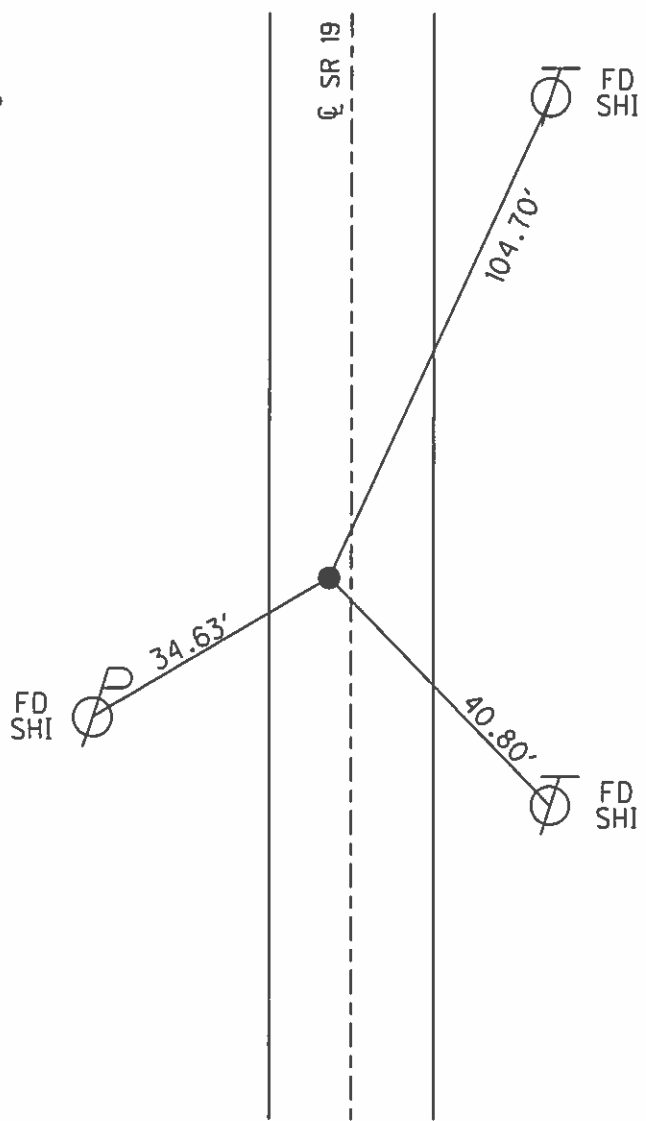
O.D.O.T. DISTRICT 2 SURVEY OFFICE (USE ONLY)

PERSONNEL _____ REFERENCE NO. 11 SHEET 13 OF 23
 NOTES MEYER DATE 6/5/14 ROUTE SR 19
 H.C. HOMAN WEATHER SUNNY COUNTY OTTAWA
 R.C. THOMAS TEMP. 70° TOWNSHIP SALEM
 _____ SECTION 8
 _____ T 6 N R 15 E

TYPE MONUMENT P.K./WASHER
 ON SURFACE - ~~BELOW~~ ON _____
 LEFT - Q PAV'T - ~~RIGHT~~ 2.9'
8.4' TO LT EDGE PAVEMENT
 S.L.M. 121+85.61
 GRID: NORTHING: 665372.158 EASTING: 1791731.832



RECORD: P.I.
 STA. 121+85.60
 $\Delta = 0^{\circ}40' RT$
 P.K./WASHER ATOP
 P.K.NAIL
 FD P.K./WASHER
 8/5/96, MB
 SET P.K./WASHER
 11/4/96, MRC
 FD P.K./WASHER
 GPS, REF11
 1/15/13, MC
 FD P.K./WASHER
 GPS, REF13
 6/6/14, EBW
 SET MAG/WASHER
 GPS, FINREF11
 7/31/14, JLL



O.D.O.T. DISTRICT 2 SURVEY OFFICE

PERSONNEL _____

REFERENCE NO. 11

SHEET 10 OF 22

NOTES Barnhisel

H.C. Russos

R.C. Hanes

DATE 8-5-96

WEATHER Sunny

TEMP. +70°

ROUTE SR 19

COUNTY OTTAWA

TOWNSHIP SALEM

SECTION 8

T&N RISE

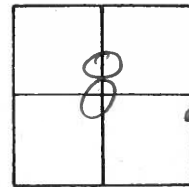
TYPE MONUMENT P.K. & Washer

ON SURFACE - BELOW Yes

LEFT-CL PAV'T. - RIGHT 2.9

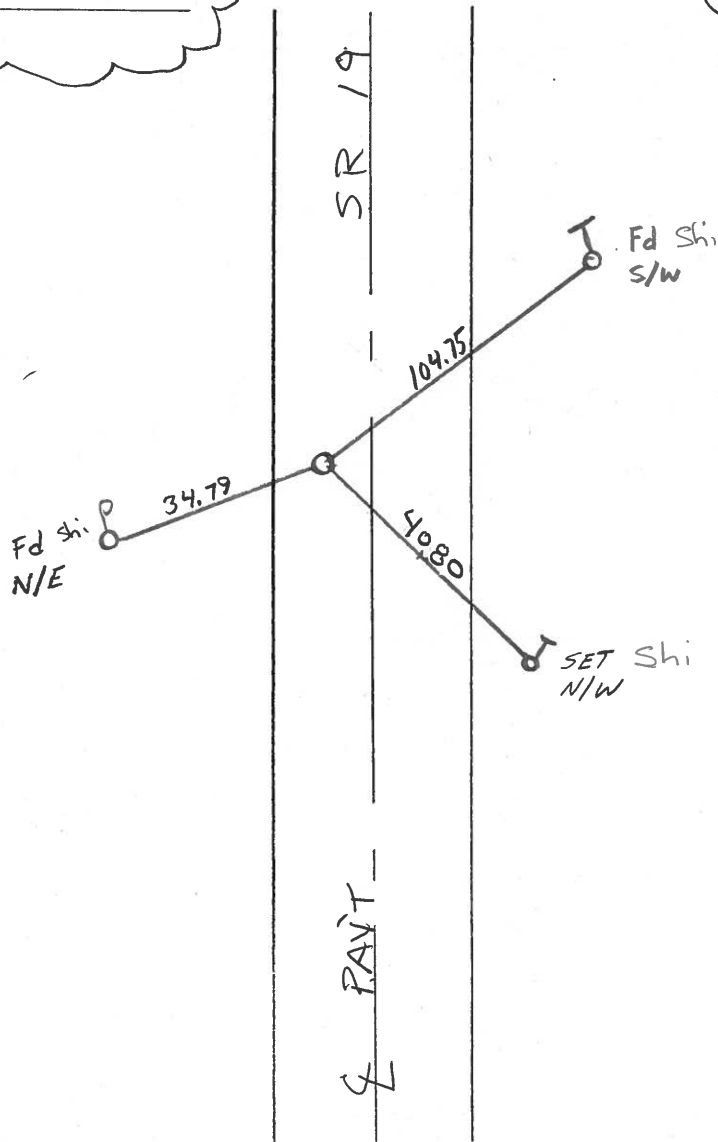
8.4 TO LT EDGE PAVEMENT

S.L.M. 121+96



RESET P.K./WASHER
11-4-96 M.R.C

REC. P.I.
STA: 121+85.60



P.I.
 $\Delta = 00^\circ 46' \text{ Rt. PLAN}$
P.K. & Washer Atop P.K.
Below Surface

O.D.O.T. DISTRICT 2 SURVEY OFFICE

PERSONNEL _____

REFERENCE NO. 11

SHEET 11 OF _____

NOTES ORONIN

DRAWN 4/17/89

H.C. RIPPLE

DATE 4/19/89

R.C. GEYMAN

WEATHER SUNNY

TEMP. 56°

ROUTE #19

COUNTY OTTAWA

TOWNSHIP SALEM

SECTION 9

T 6 N R 15 E

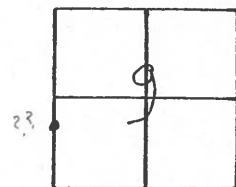
TYPE MONUMENT PK. & WASHER

ON SURFACE - BELOW _____

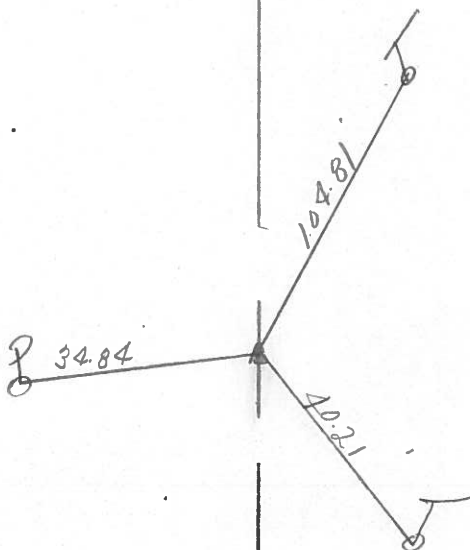
LEFT - ☉ PAV'T. - RIGHT 3.0'±

TO _____ EDGE PAVEMENT

S.L.M. 121+85.60 (121+92.1924 PLHV)



P.F.
Δ = 00° 48' Rt. PLAN
PK. & WASHER ATOP PK.
BELOW SURFACE



County OTTAWA S.R. 19

Township SALEM

Section 8

TBN, RISE

Personnel Hoffmaal

Householder

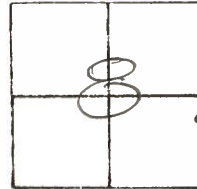
Loehrke

#11

Date 7-23-81

Weather Clear

Temp. +75°

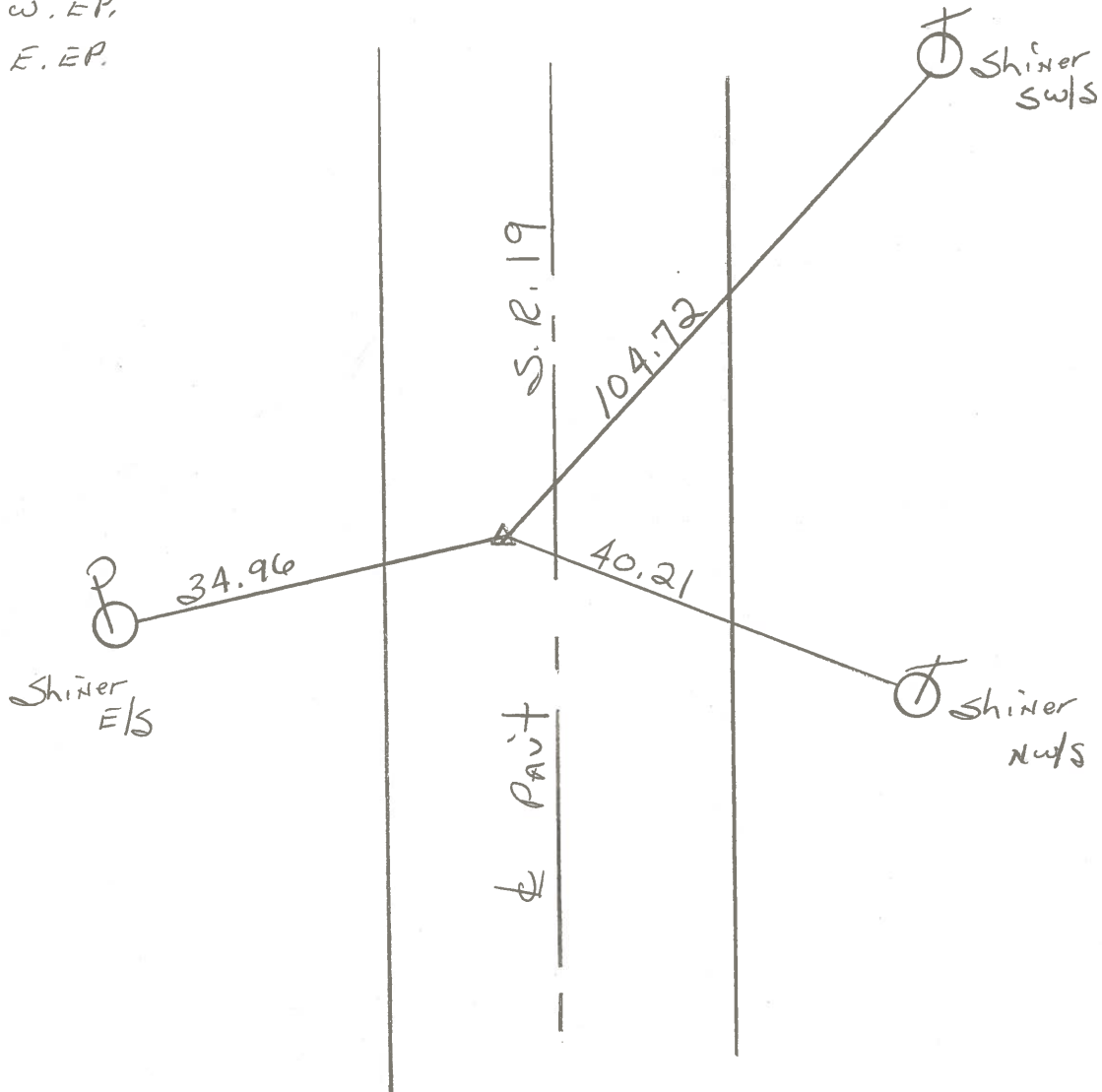


Set P.K. Nail & Washer

2.4' w. of & PAUT

10.3' to W.E.P.

14.7' to E.E.P.



P.I. STA 121 + 85.60 ~ REC.

PERSONNEL TITLE PERSONNEL TITLE

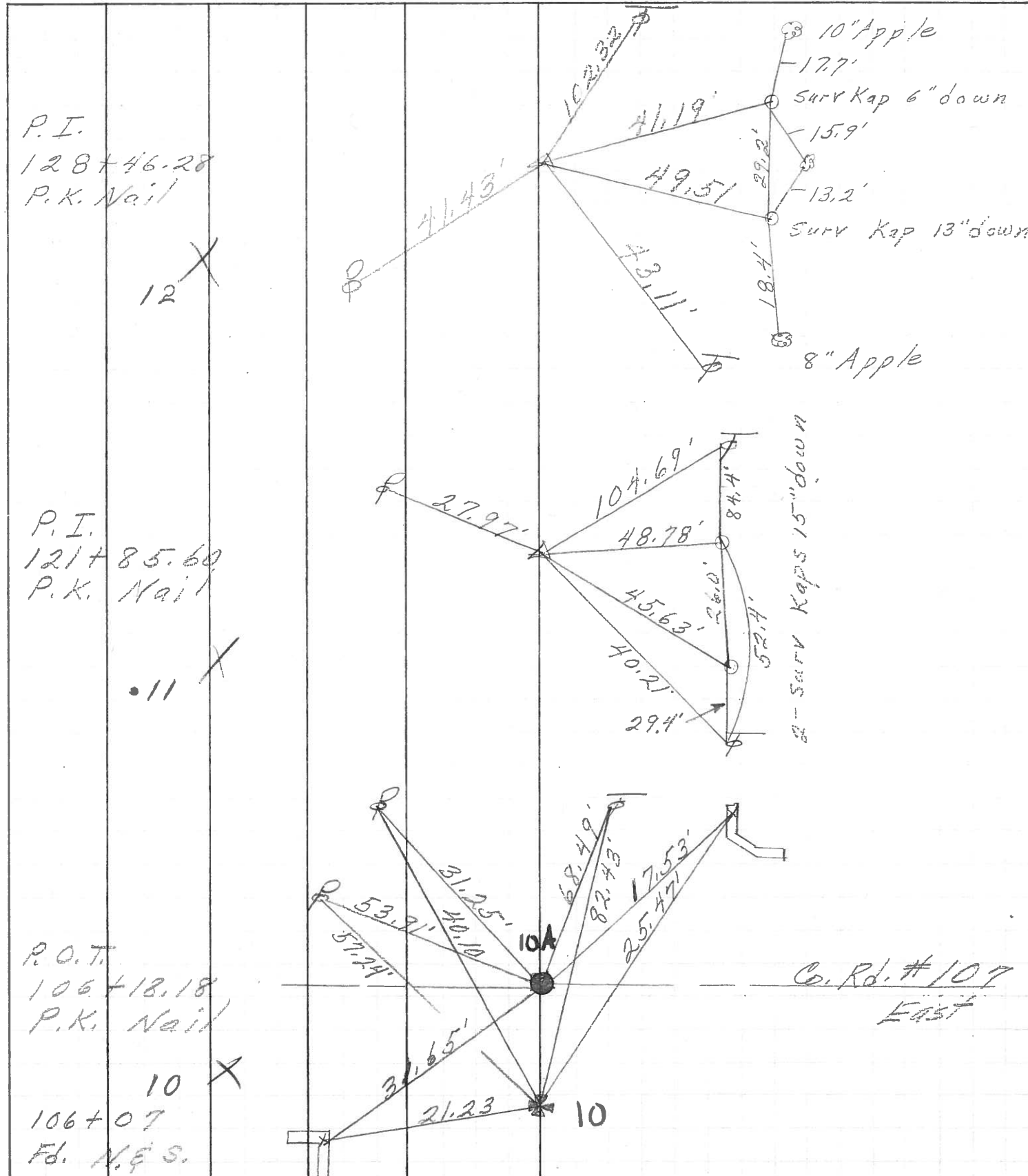
COUNTY Ottawa DATE 5-4-71

S. R. 19 WEATHER _____

SEC. 8 E 9 TEMP. _____

DESCRIPTION Sandusky, Co. Line to Oak Harbor JOB NO. _____

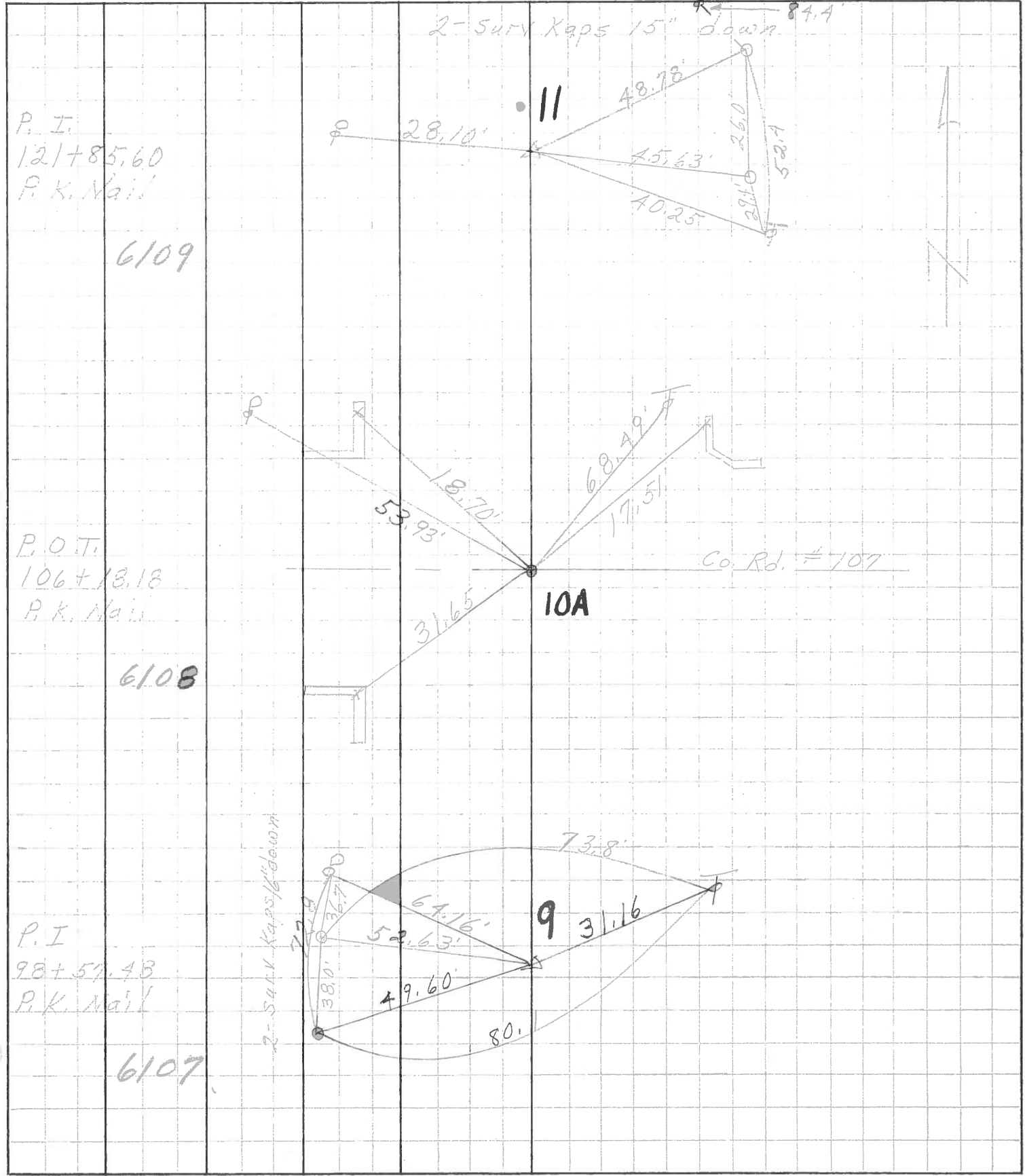
LEFT CENTER LINE RIGHT



PERSONNEL	TITLE	PERSONNEL	TITLE
Schneider			
Mosser			
Barbour			
Potts			

COUNTY Ottawa DATE 5-10-68
 S. R. 19 WEATHER Fair
 SEC. San Co. Line - North TEMP 60°

DESCRIPTION Ties for Control Points JOB NO. _____



PERSONNEL TITLE PERSONNEL TITLE

COUNTY Ottawa DATE 2-19-63

Schneider _____

S. R. # 19 WEATHER Fair

5 _____

Crow _____

SEC. Ottawa Co. line - North TEMP. 26°

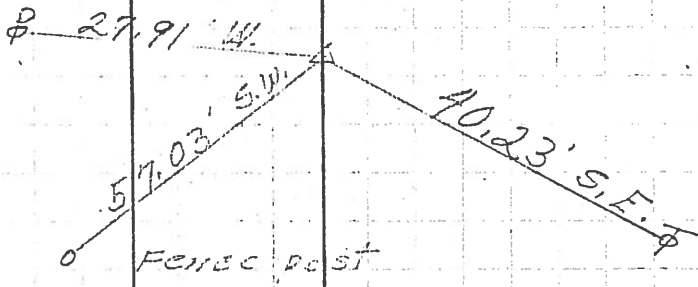
DESCRIPTION Ties for Central Points JOB NO. _____

LEFT

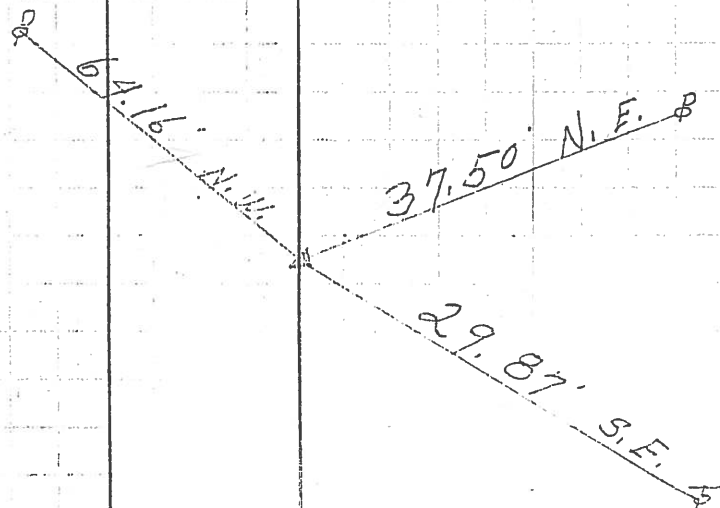
CENTER LINE

RIGHT

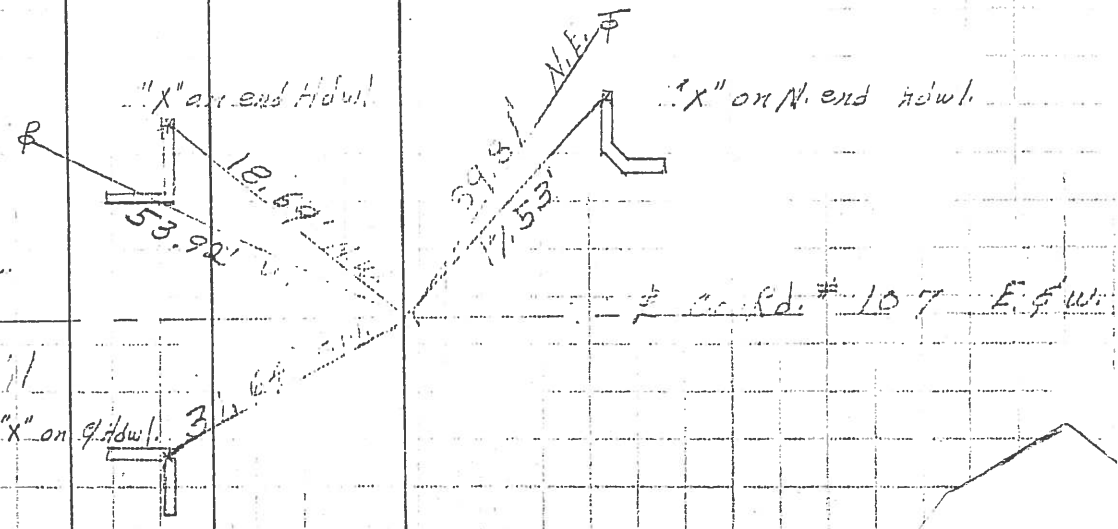
P.I. **11**
 121+85.60
 One good tie
 Set P.K. Nail
 8' from west
 edge of old permit.
 Reset P.K. Nail
 10-23-63



P.I. **9**
 98+57.48
 Set P.K. Nail
 8' in from west
 edge of old permit.
 Reset P.K. Nail
 10-23-63



P.O.T. **10**
 106+18.18
 $\Delta = 0^{\circ} 00' 00''$
 set P.K. Nail
 Reset P.K. Nail
 10-23-63



98+57.48