

O.D.O.T. DISTRICT 2 SURVEY OFFICE (USE ONLY)

PERSONNEL \_\_\_\_\_ REFERENCE NO. 12 SHEET 14 OF 23  
 NOTES MEYER DATE 6/5/14 ROUTE SR 19  
 H.C. HOMAN WEATHER SUNNY COUNTY OTTAWA  
 R.C. THOMAS TEMP. 70° TOWNSHIP SALEM  
 \_\_\_\_\_ SECTION 8  
 \_\_\_\_\_ T 6 N R 15 E

TYPE MONUMENT P.K./WASHER

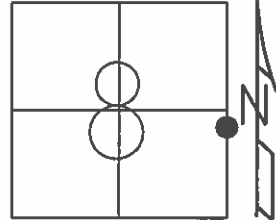
~~ON SURFACE~~ - BELOW 2"

LEFT - C PAV'T - RIGHT ON

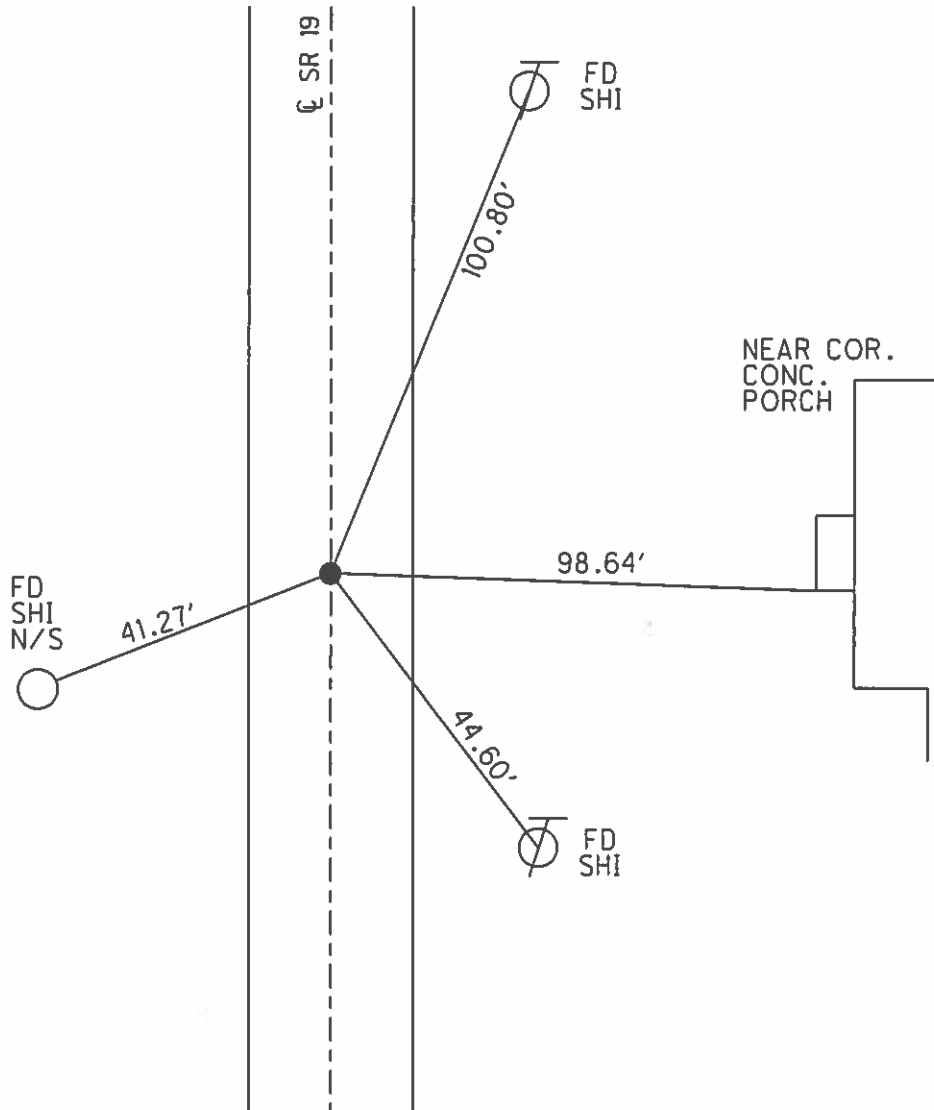
10.7' TO RT EDGE PAVEMENT

S.L.M. 128+47.14

GRID: NORTHING: 666033.643 EASTING: 1791741.811



RECORD: P.I.  
 STA. 128+46.28  
 $\Delta = 0^{\circ}01' RT$   
 P.K./WASHER ATOP  
 P.K.NAIL  
 FD P.K./WASHER  
 8/5/96, MB  
 SET P.K./WASHER  
 11/4/96, MRC  
 FD P.K.SHANK  
 GPS, REF12  
 1/15/13, MC  
 FD P.K./WASHER  
 2" BELOW  
 6/5/14  
 GPS, REF14  
 SET MAG/WASHER  
 GPS, FINREF12  
 7/31/14, JLL



O.D.O.T. DISTRICT 2 SURVEY OFFICE

PERSONNEL

REFERENCE NO. 12

SHEET 11 OF 22

NOTES Bornhiser

H.C. Russos

R.C. Hones

DATE 8-5-96

WEATHER Sunny

TEMP. +75°

ROUTE SR 19

COUNTY OTTAWA

TOWNSHIP SALEM

SECTION 8

T8N R15E

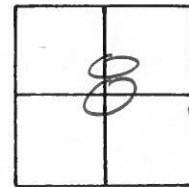
TYPE MONUMENT P.K. & Washer

ON SURFACE - BELOW Yes

~~LEFT~~ - ~~PAV'T.~~ - ~~RIGHT~~ Yes

10.7 TO Rt EDGE PAVEMENT

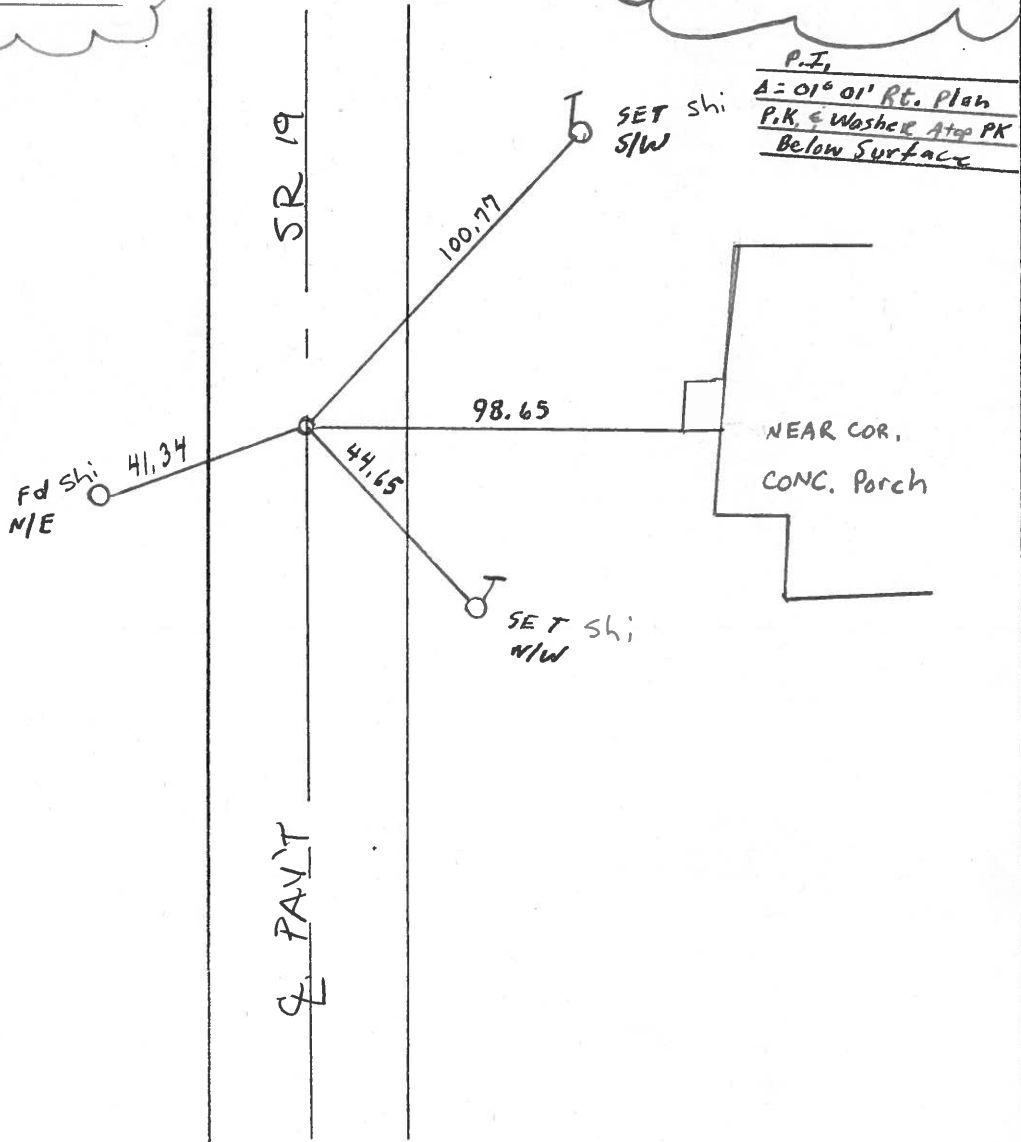
S.L.M. 128+58



RESET P.K. / WASHER  
11-4-96 M.R.C

REC. P.I.  
STA: 128+46.28

P.I.  
A = 01° 01' Rt. Plan  
P.K. & Washer Atop PK  
Below Surface



# O.D.O.T. DISTRICT 2 SURVEY OFFICE

PERSONNEL

NOTES CROWIN

H.C. RIPPLE

R.C. GEYMAN

REFERENCE NO. 12

DRAWN 4/17/89

DATE 4/19/89

WEATHER SUNNY

TEMP. 56°

SHEET 12 OF     

ROUTE #19

COUNTY OTTAWA

TOWNSHIP SALEM

SECTION     

T 6 N R 15 E

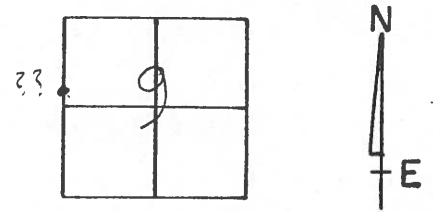
TYPE MONUMENT P.K. E' WASHER

ON SURFACE - BELOW     

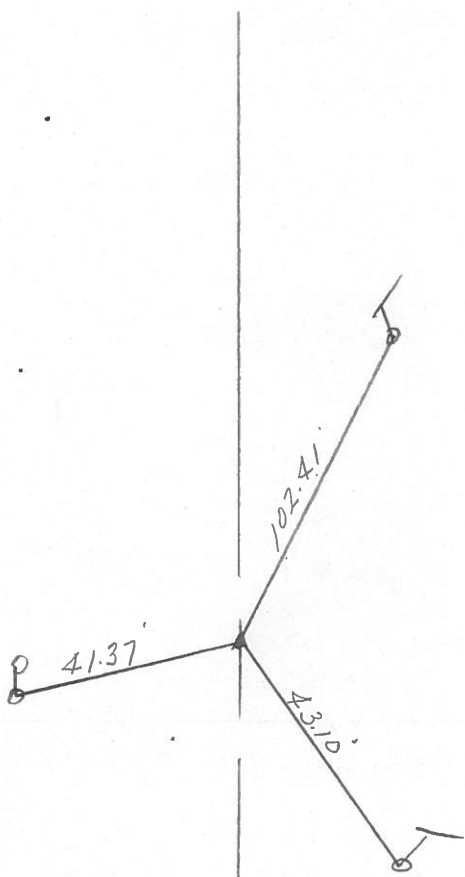
LEFT -      PAV'T. - RIGHT     

     TO      EDGE PAVEMENT

S.L.M. 128+46.28 (128+5351924 PLAN)



P.I  
A=01001' RT. PLAN  
P.K. E' WASHER ATOP P.K.  
BELOW SURFACE



ODOT. DISTRICT 2 SURVEY OFFICE

SHEET \_\_\_\_\_ OF \_\_\_\_\_

County OTTAWA S.R. 19

Date 7-27-81

Township SALEM

Weather Partly Cloudy

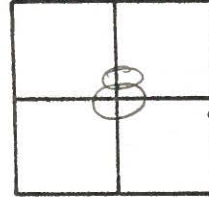
Section 8

Temp. +70°

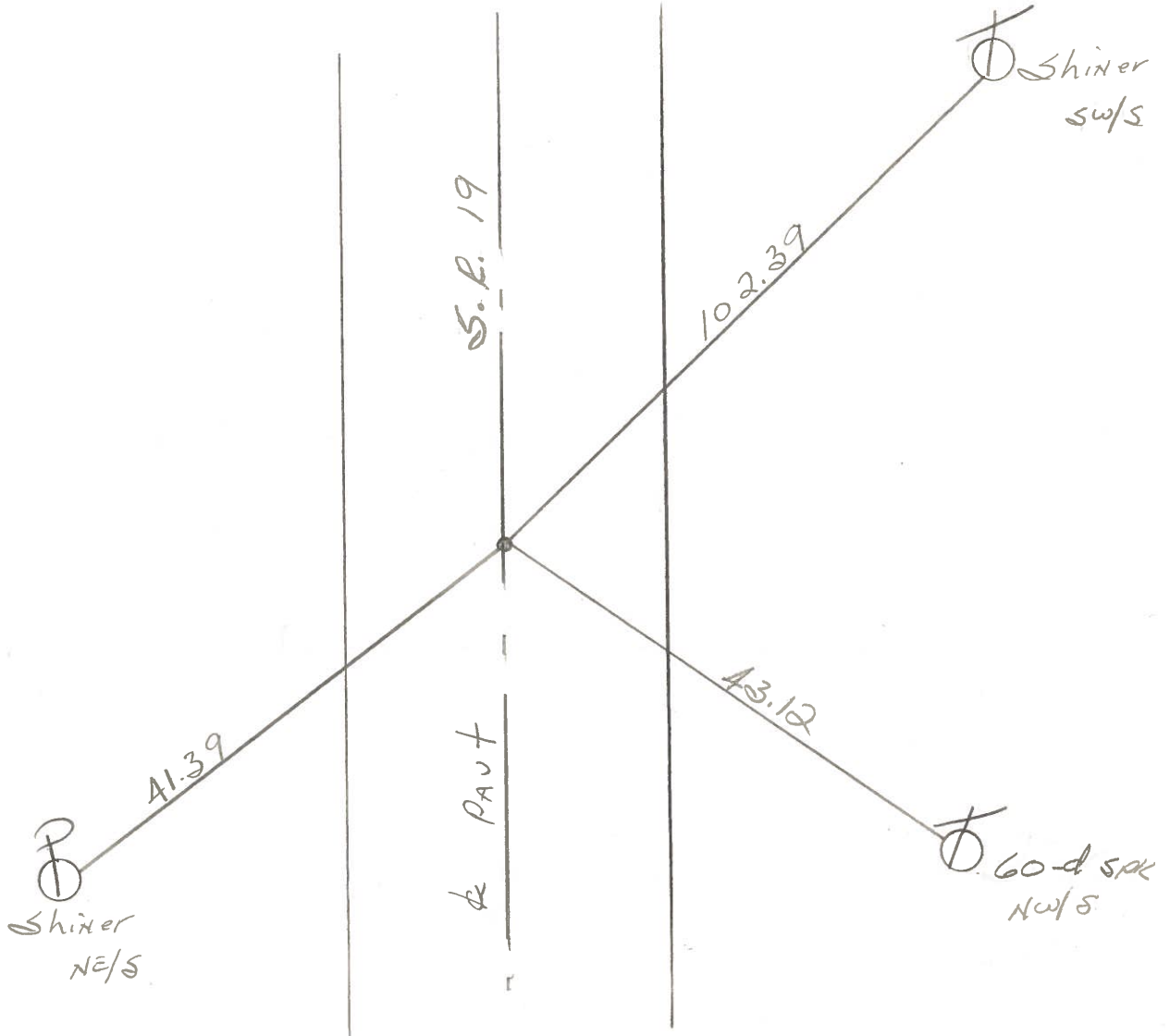
T8N, R5E

Personnel Hoffman  
Householder  
Loehrke

#12



SET. P. K. Nail & Washer  
12.8' to W. EP.  
12.4' to E. EP.



P.I. 128 + 46.28

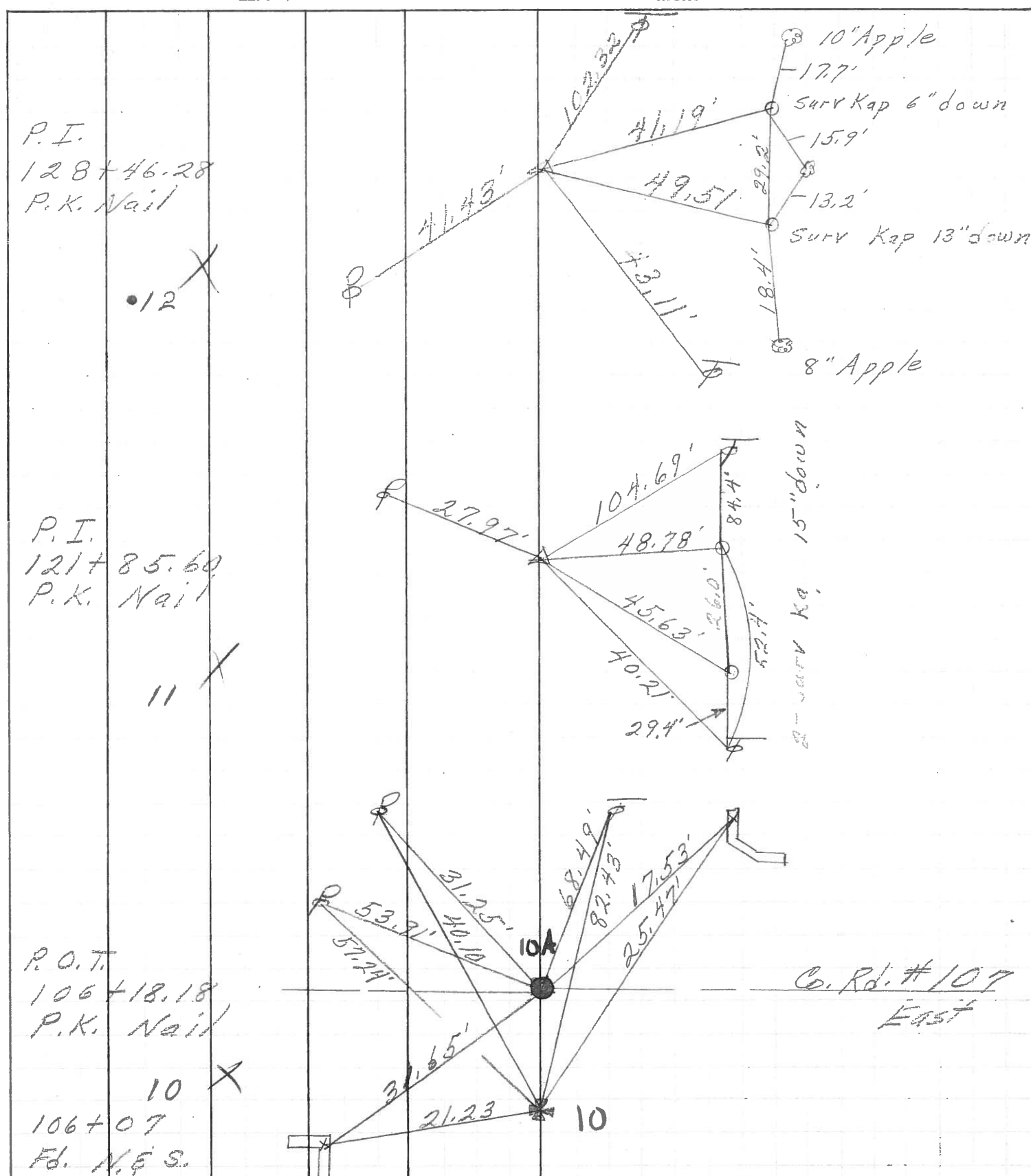
PERSONNEL	TITLE	PERSONNEL	TITLE

COUNTY Ottawa DATE 5-4-71

S. R. 19 WEATHER \_\_\_\_\_

SEC. 8 E 9 TEMP. \_\_\_\_\_

DESCRIPTION Sandusky, Co. Line to Oak Harbor JOB NO. \_\_\_\_\_



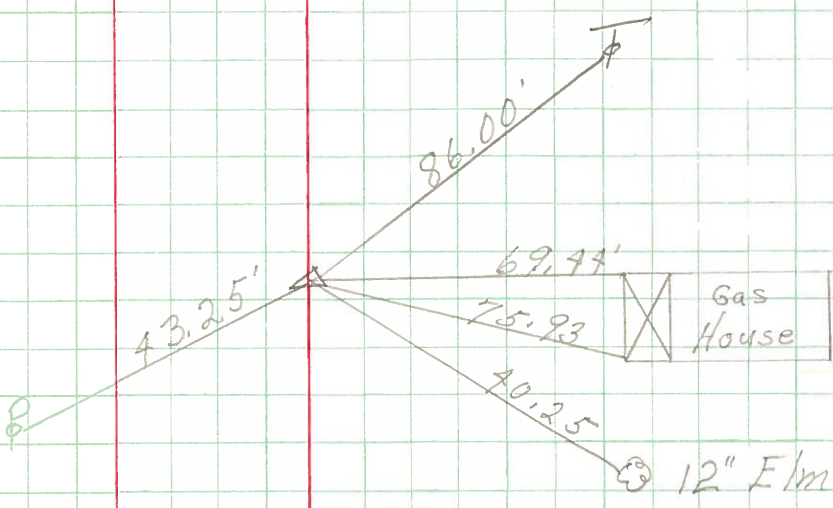
PERSONNEL	TITLE	PERSONNEL	TITLE	COUNTY	<u>Ottawa</u>	DATE	<u>5-13-68</u>
<u>Schneider</u>				S. R.	<u>19</u>	WEATHER	<u>Fair</u>
<u>Mosser</u>				SEC.	<u>San. Co. Line - North</u>	TEMP.	<u>60°</u>
<u>Barbour</u>				DESCRIPTION <u>Ties for Control Points</u>			
<u>Reddine</u>				LEFT	CENTER LINE	RIGHT	JOB NO.

#11

146 + 21.46  
P. K. Nail

**14**

6112

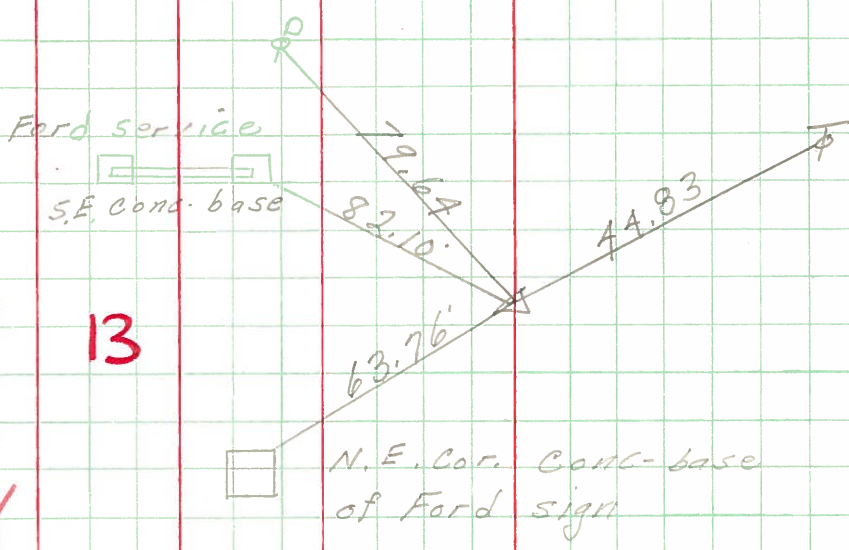


#12

P. I.  
135 + 93.48  
P. K. Nail

**13**

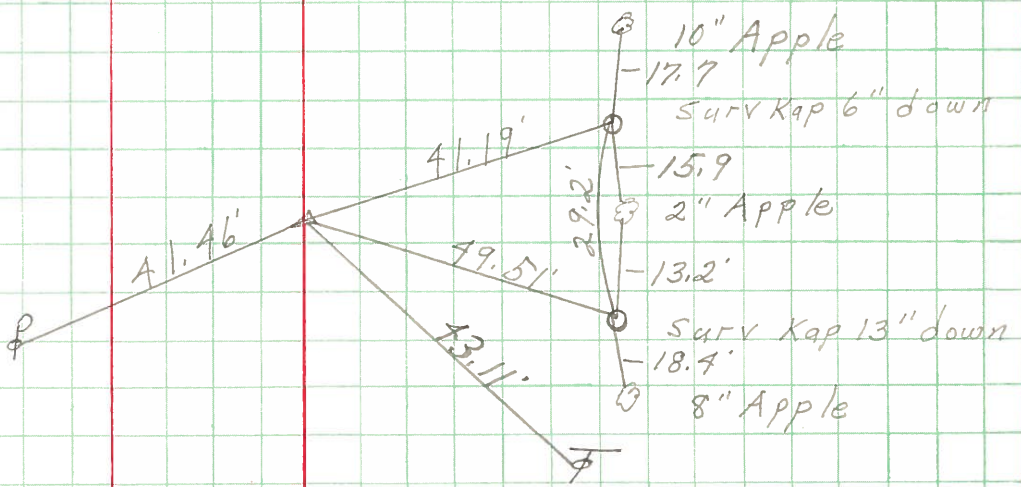
6111



P. I.  
128 + 46.48  
P. K. Nail

**12**

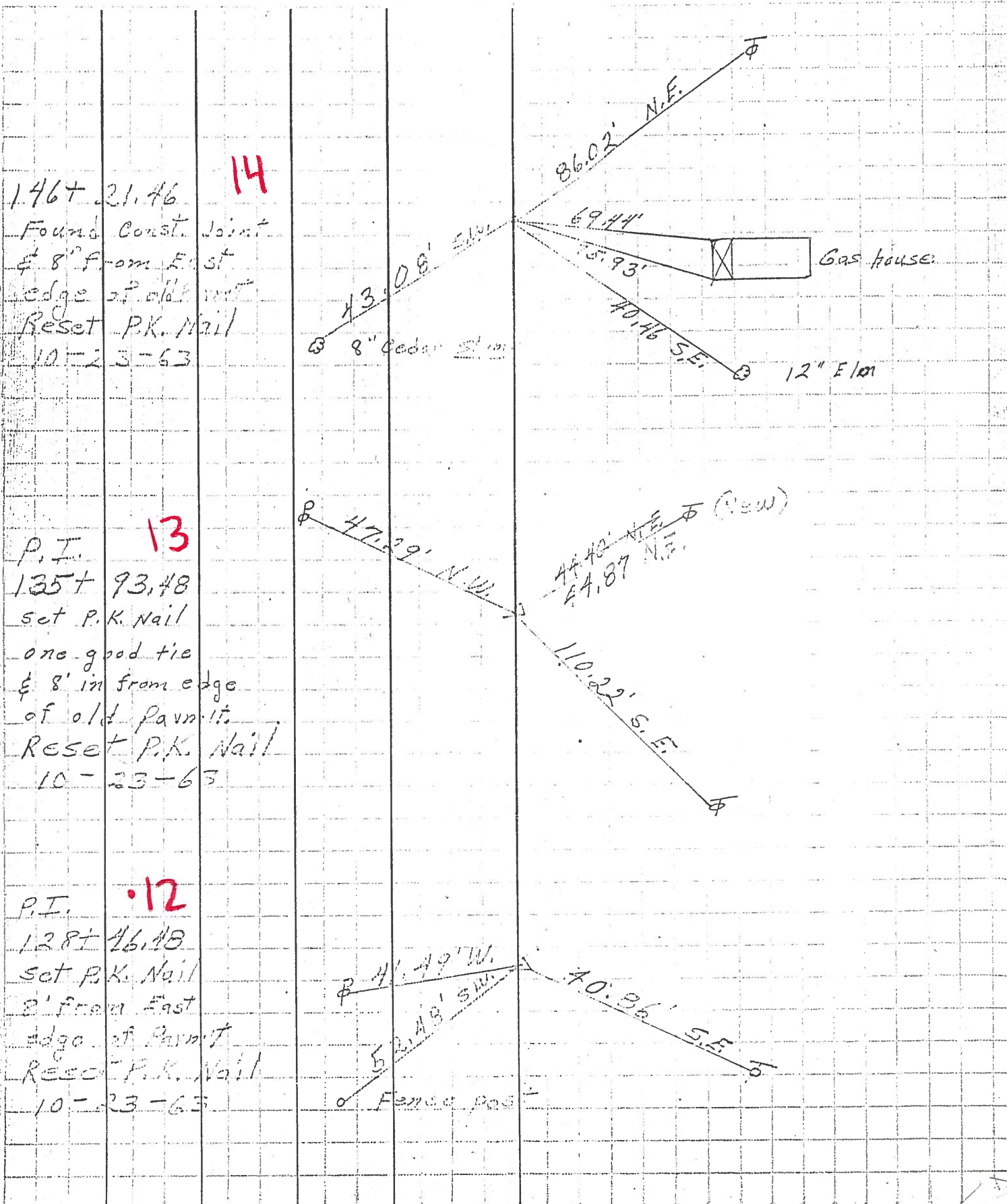
6110



PERSONNEL	TITLE	PERSONNEL	TITLE
Schulder			
Mason			
Zahn			
Schwartz			

COUNTY Stawa DATE 2-19-63  
 S. R. 1019 WEATHER Silt-Snow  
 SEC. 16 Line - North TEMP. 22°

DESCRIPTION Ties For Center JOB NO. \_\_\_\_\_



146+ 21.46 **14**  
 Found Const. Joint  
 & 8" from East  
 edge of old perm.  
 Reset P.K. Nail  
 10-23-63

P.I. **13**  
 135+ 93.48  
 set P.K. Nail  
 one good tie  
 & 8' in from edge  
 of old perm. it.  
 Reset P.K. Nail  
 10-23-63

P.I. **12**  
 128+ 46.48  
 set P.K. Nail  
 8' from East  
 edge of perm. it.  
 Reset P.K. Nail  
 10-23-63

8" Cedar Stake

Gas House

12" E/101"

(New)

Fence Post