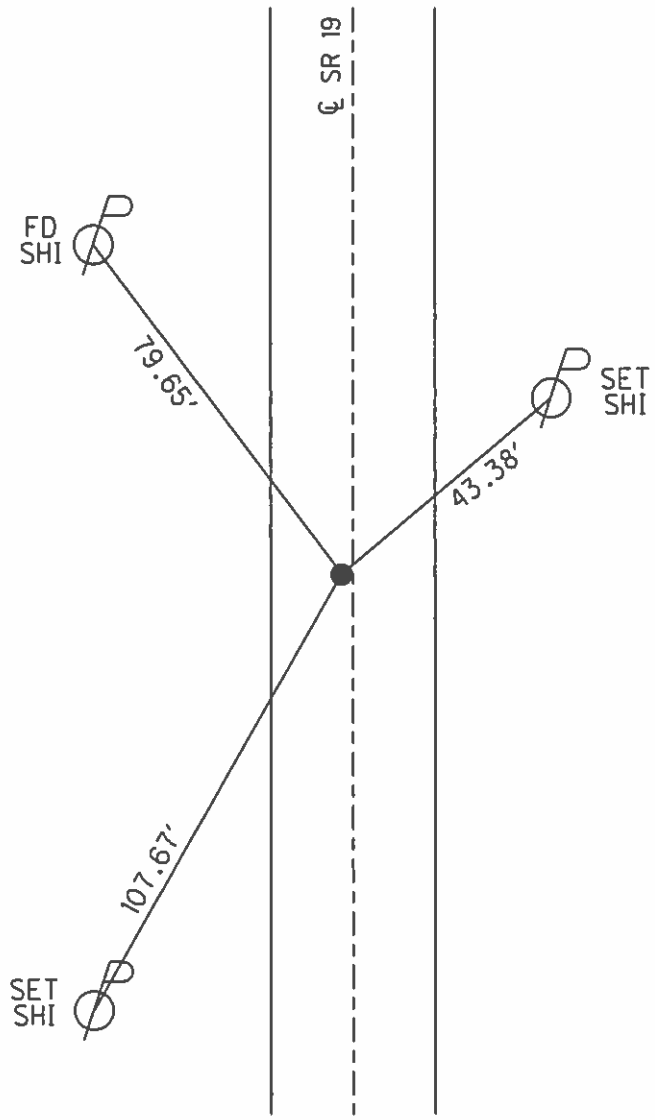
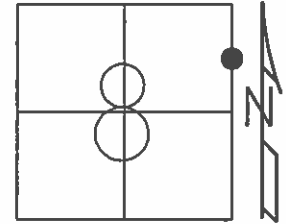


O.D.O.T. DISTRICT 2 SURVEY OFFICE (USE ONLY)

PERSONNEL \_\_\_\_\_ REFERENCE NO. 13 SHEET 16 OF 23  
 NOTES MEYER DATE 6/5/14 ROUTE SR 19  
 H.C. HOMAN WEATHER SUNNY COUNTY OTTAWA  
 R.C. THOMAS TEMP. 70° TOWNSHIP SALEM  
 \_\_\_\_\_ SECTION 8  
 \_\_\_\_\_ T 6 N R 15 E

TYPE MONUMENT P.K./WASHER  
 ON SURFACE - ~~BELOW~~ ON  
 LEFT - Q PAV'T - ~~RIGHT~~ 1.0'  
9.8' TO LT EDGE PAVEMENT  
 S.L.M. 135+93.49  
 GRID: NORTHING: 666779.911 EASTING: 1791741.648



RECORD: P.I.  
 STA. 135+93.48  
 $\Delta = 0^{\circ}22' RT$   
 P.K./WASHER ATOP  
 P.K.NAIL  
 FD P.K./WASHER  
 8/5/96, MB  
 SET P.K./WASHER  
 11/4/96, MRC  
 FD P.K./WASHER  
 GPS, REF13  
 1/15/13, MC  
 6/6/14, EBW  
 SET MAG/WASHER  
 GPS, FINREF13  
 7/31/14, JLL

# O.D.O.T. DISTRICT 2 SURVEY OFFICE

PERSONNEL \_\_\_\_\_

REFERENCE NO. 13

SHEET 12 OF 22

NOTES Barnhise/

H.C. Russos

R.C. Hanes

DATE 8-5-96

WEATHER Sunny

TEMP. +25°

ROUTE SR 19

COUNTY OTTAWA

TOWNSHIP SALEM

SECTION 8

T 6 N R 15 E

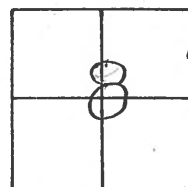
TYPE MONUMENT P.K. & Washer SHANK

ON SURFACE - BELOW Yes

LEFT-CL PAV'T. - RIGHT 1.0

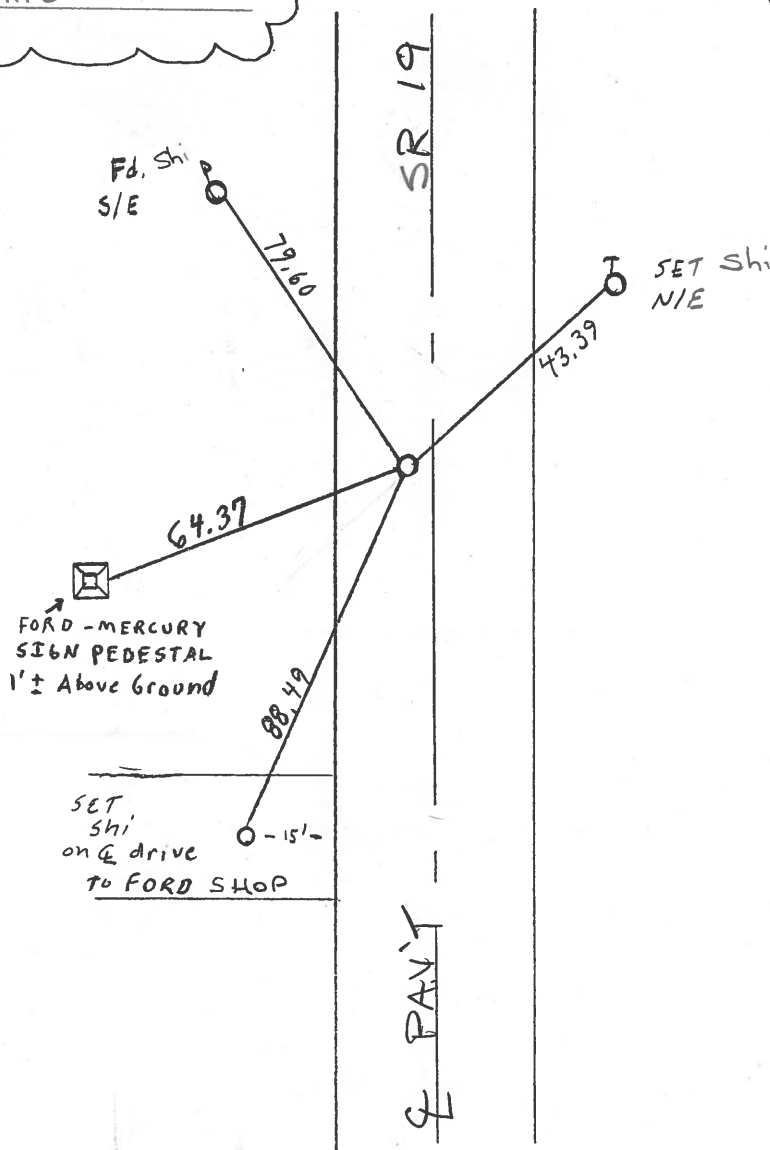
9.8 TO LT EDGE PAVEMENT

S.L.M. 136+05



RESET P.K. / WASHER  
11-4-96 M.R.C

REC. P.I.  
STA: 135+93.48



4=00°22' Rt. PLAN

P.I.

P.K. & Washer ATOP P.K.

Below Surface

# O.D.O.T. DISTRICT 2 SURVEY OFFICE

PERSONNEL \_\_\_\_\_

REFERENCE NO. 13

SHEET 13 OF \_\_\_\_\_

NOTES CRONIN

H.C. RIPPLE

R.C. GEYMAN

DATE 4/18/89

WEATHER OVERCAST

TEMP. 40°

ROUTE #19

COUNTY OTTAWA

TOWNSHIP SALEM

SECTION 9

T. 6 N. R. 15 E.

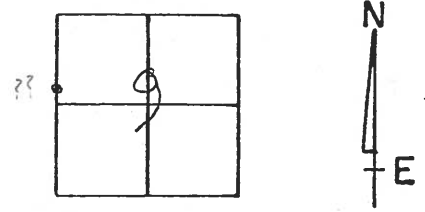
TYPE MONUMENT P.K. & WASHER

ON SURFACE - BELOW \_\_\_\_\_

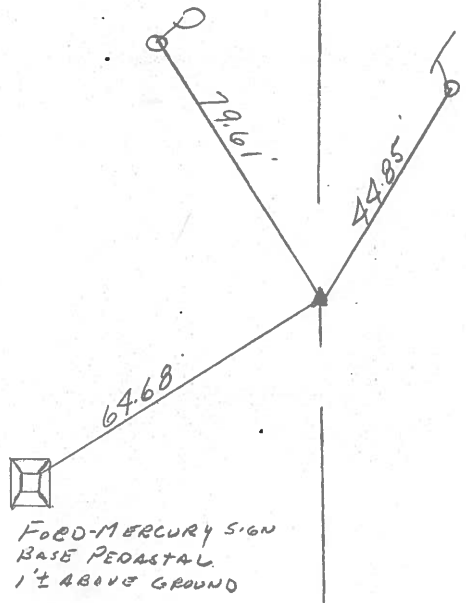
LEFT - & PAV'T. - RIGHT 1.0'

TO \_\_\_\_\_ EDGE PAVEMENT

S.L.M. \_\_\_\_\_  
(136+00 192+ PLAN)  
 135+93.48



$\Delta = 00^{\circ}22'$  RT PLAN  
P.I.  
P.K. & washer atop P.K.  
Below surface



County OTTAWA S.R. 19

Date 7-27-81

Township SALEM

Weather Partly Cloudy

Section 8

Temp. +70°

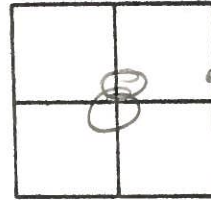
T&N, R&E

Personnel HOFFMAN

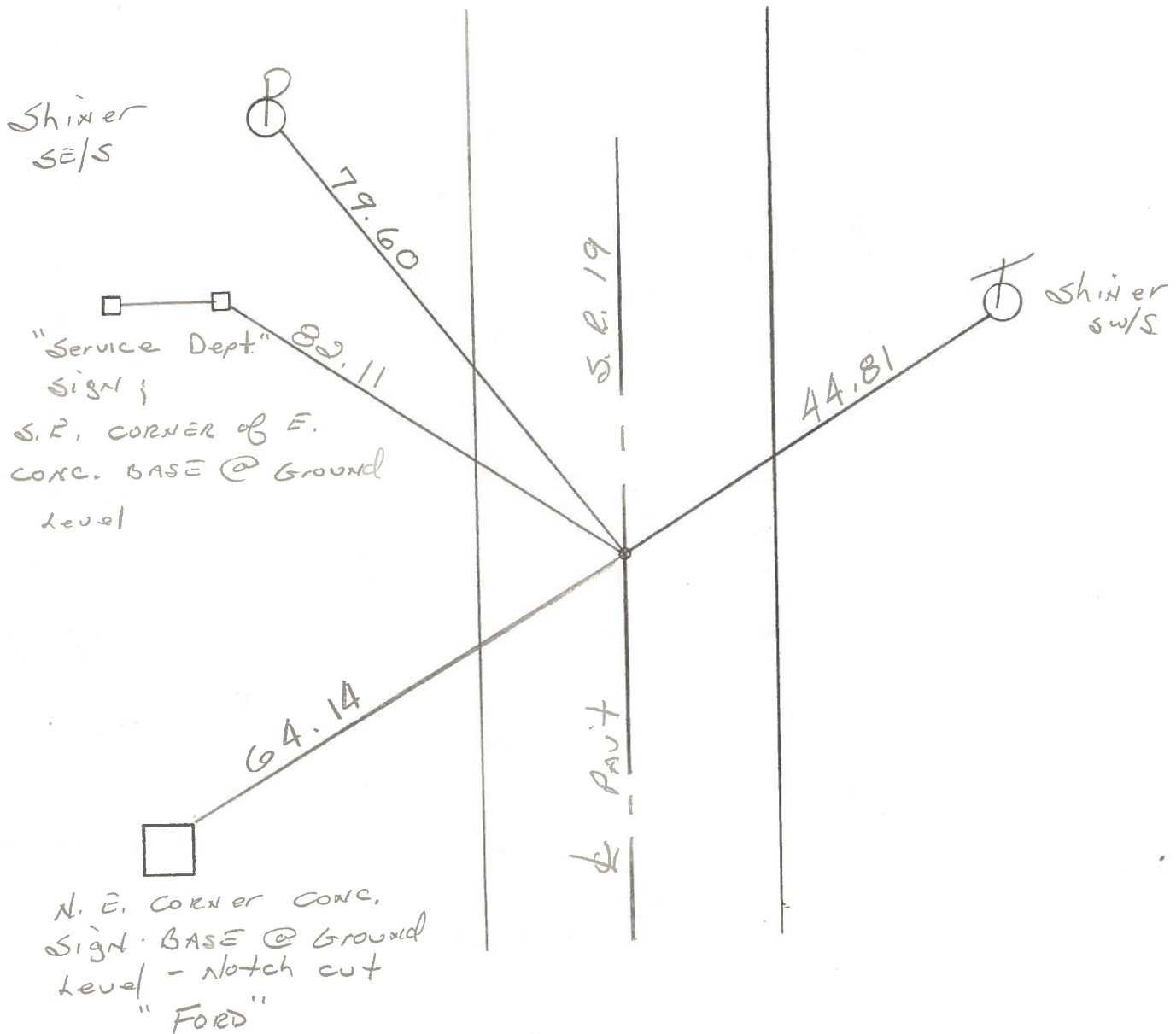
Householder

Loehrke

#13



set P.K. NAIL & WASHER



P.I. STA. 135 + 93.48

PERSONNEL TITLE PERSONNEL TITLE

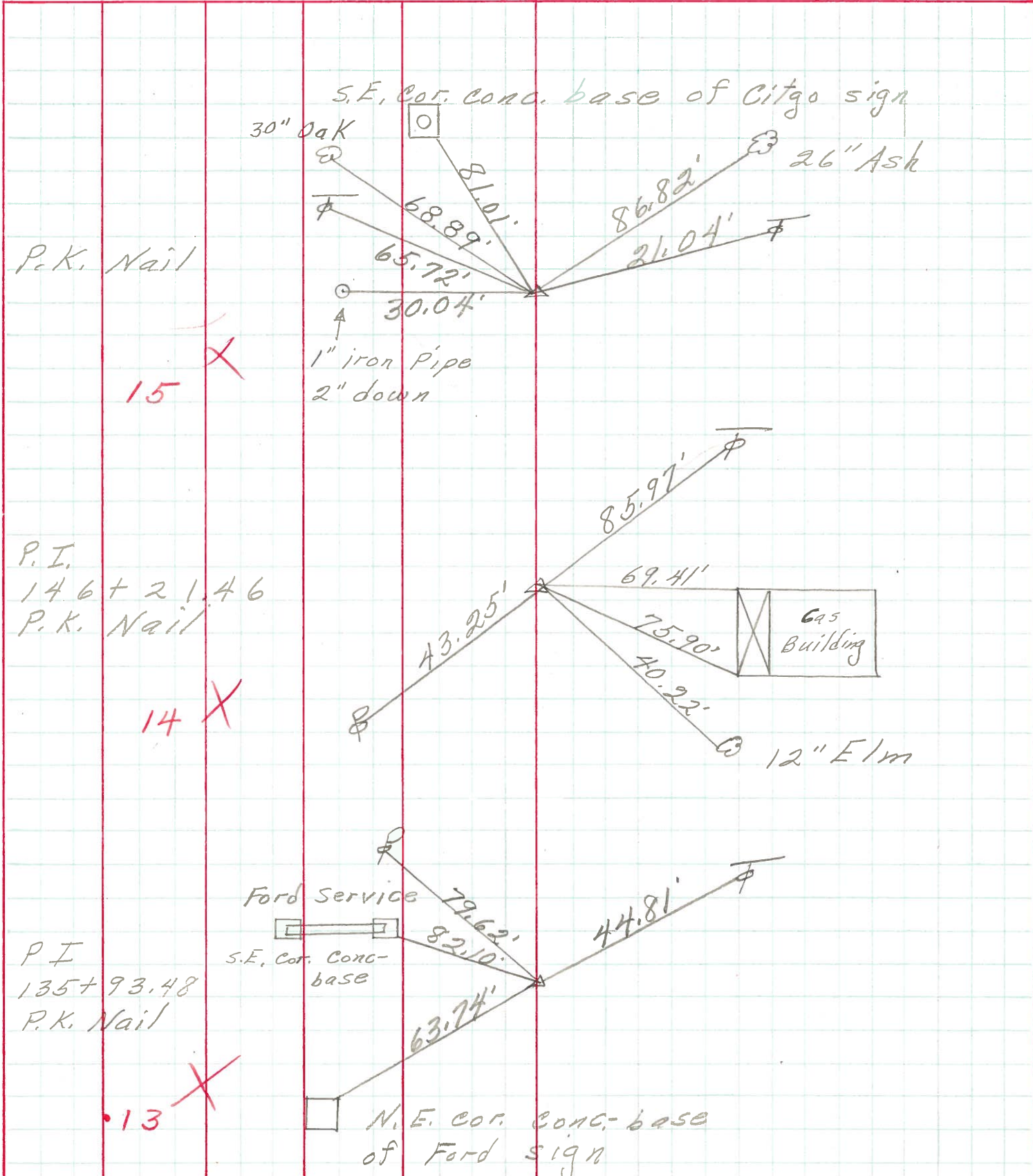
COUNTY Ottawa DATE 5-4-71

S. R. 19 WEATHER

SEC. 8 & 9 TEMP.

DESCRIPTION Sandusky, Co. Line to Oak Harbor JOB NO.

LEFT CENTER LINE RIGHT



P.K. Nail

15

P.I.  
146 + 21.46  
P.K. Nail

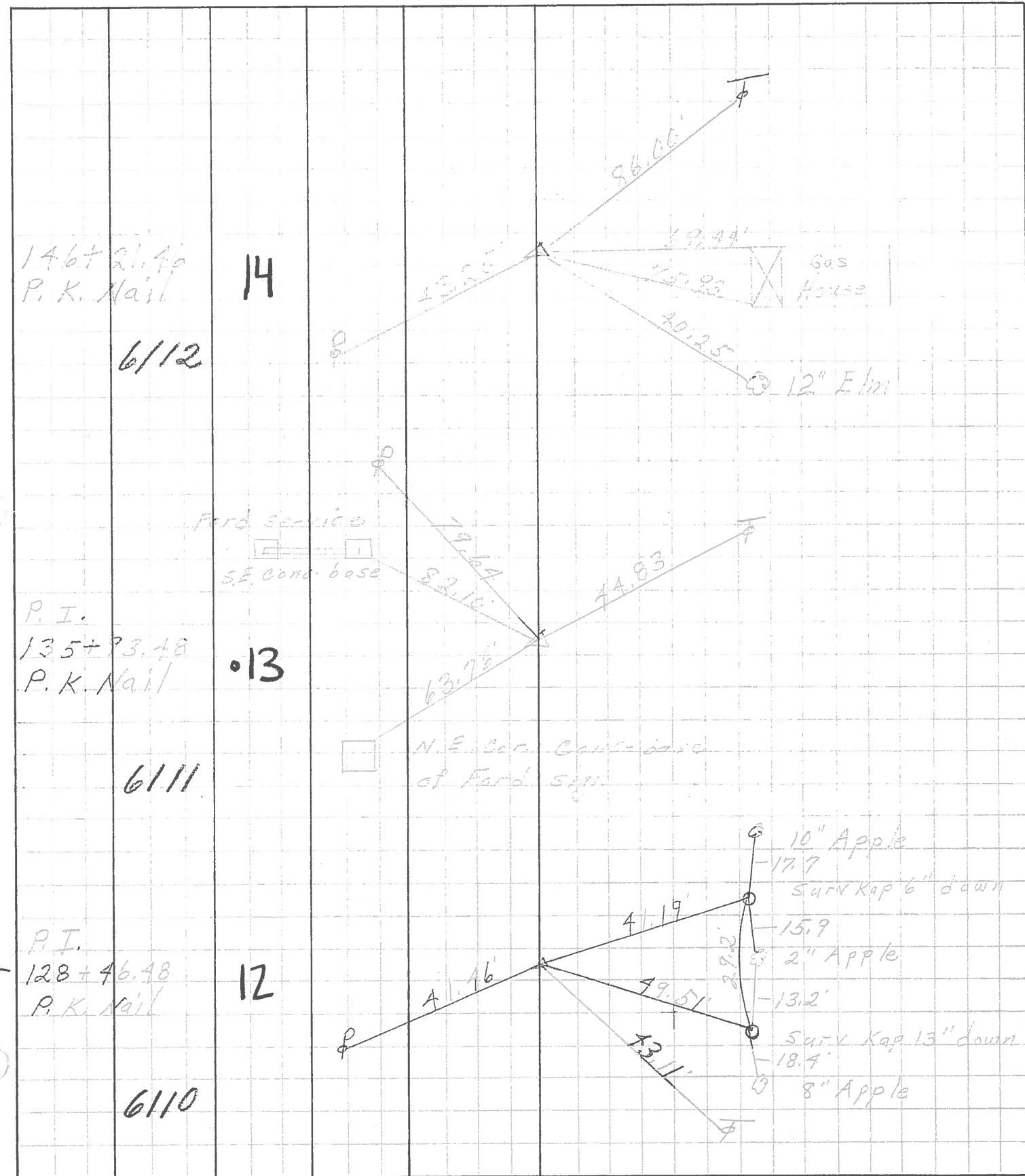
14

P.I.  
135 + 93.48  
P.K. Nail

13

PERSONNEL	TITLE	PERSONNEL	TITLE	COUNTY	DATE
Schneider				Ottawa	5-13-68
Mosser				S. R. 19	WEATHER Fair
Barbour				SEC. San. Co. Line - North	TEMP. 60°
Redding					

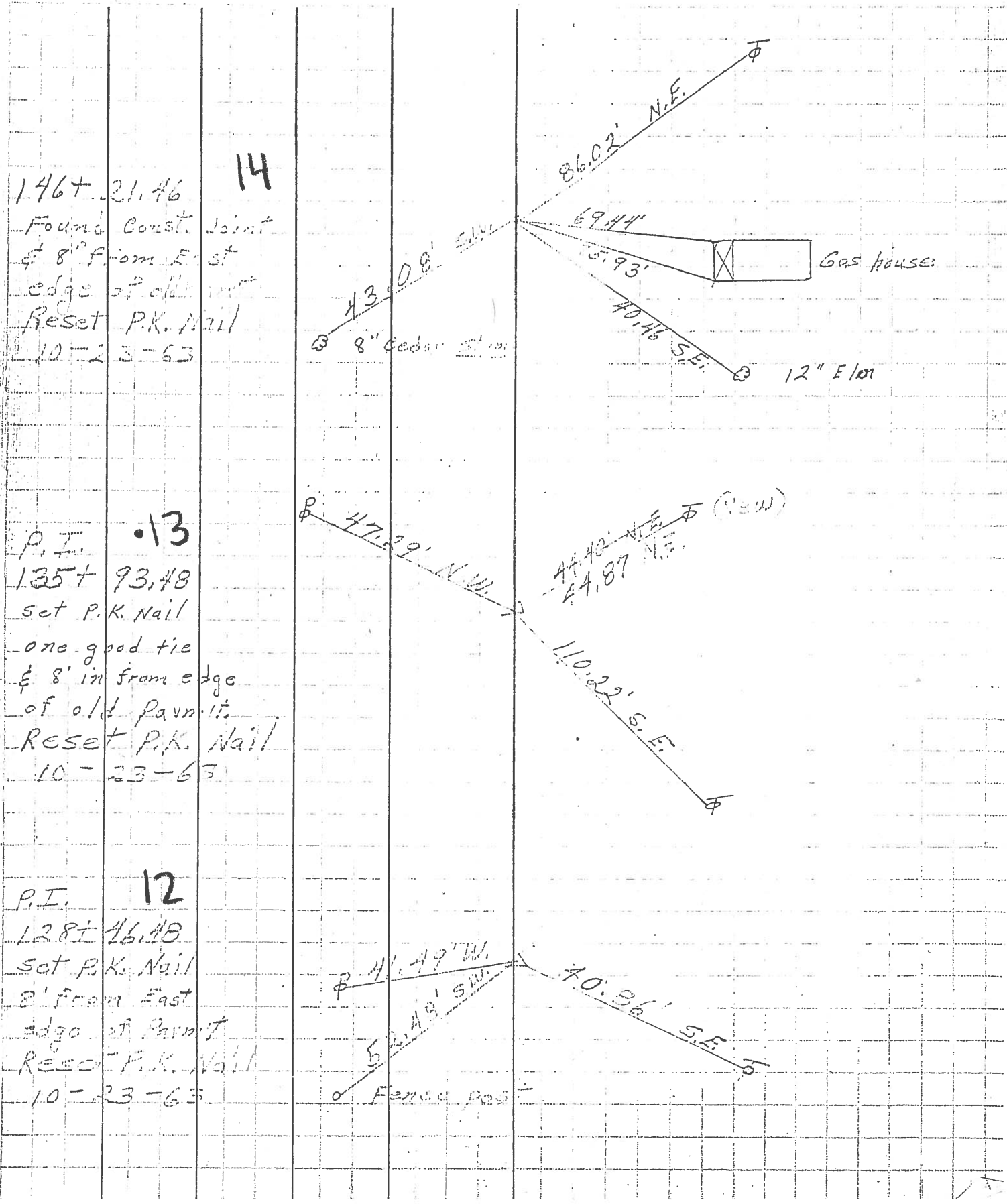
DESCRIPTION Ties for Control Points JOB NO. \_\_\_\_\_



PERSONNEL	TITLE	PERSONNEL	TITLE
Schulder			
Mason			
Zahn			
Schwartz			

COUNTY St. Lawrence DATE 2-19-63  
 S. R. 1019 WEATHER SUN-SNOW  
 SEC. 21-12-13-14-North TEMP. 32°

DESCRIPTION Ties For Center JOB NO. \_\_\_\_\_



146+ 21.46 **14**  
 Found Const. Joint  
 & 8" from East  
 edge of old permit  
 Reset P.K. Nail  
 10-23-63

P.T. **13**  
 135+ 93.48  
 set P.K. Nail  
 one good tie  
 & 8' in from edge  
 of old permit  
 Reset P.K. Nail  
 10-23-63

P.T. **12**  
 128+ 46.48  
 set P.K. Nail  
 8' from East  
 edge of Permit  
 Reset P.K. Nail  
 10-23-63

8" Cedar Stake

Gas House

12" E Iron

Fence Post

Fence Post