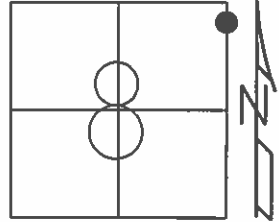


O.D.O.T. DISTRICT 2 SURVEY OFFICE (USE ONLY)

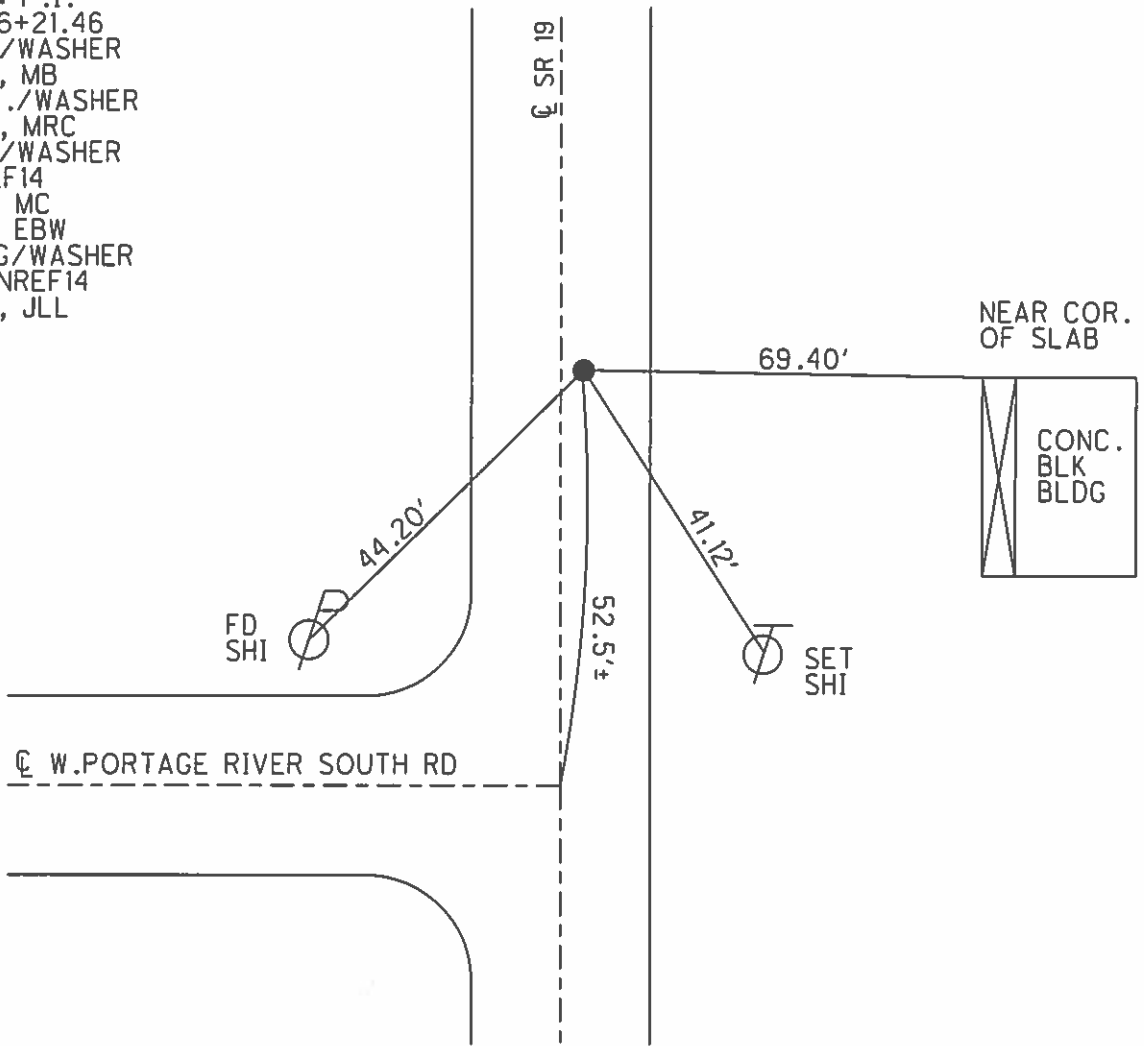
PERSONNEL _____ REFERENCE NO. 14 SHEET 17 OF 23
 NOTES MEYER DATE 6/5/14 ROUTE SR 19
 H.C. HOMAN WEATHER SUNNY COUNTY OTTAWA
 R.C. THOMAS TEMP. 70° TOWNSHIP SALEM
 _____ SECTION 8
 _____ T 6 N R 15 E

TYPE MONUMENT MAG NAIL
 ON SURFACE - ~~BELOW~~ ON
~~LEFT~~ - ℄ PAV'T - RIGHT 1.8'
9.3' TO RT EDGE PAVEMENT
 S.L.M. 146+21.28



GRID: NORTHING: 667807.727 EASTING: 1791746.690

RECORD: P.I.
 STA. 146+21.46
 FD P.K./WASHER
 8/5/96, MB
 SET P.K./WASHER
 11/4/96, MRC
 FD P.K./WASHER
 GPS, REF14
 1/15/13, MC
 6/6/14, EBW
 SET MAG/WASHER
 GPS, FINREF14
 7/31/14, JLL



O.D.O.T. DISTRICT 2 SURVEY OFFICE

PERSONNEL _____

REFERENCE NO. 14

SHEET 13 OF 22

NOTES BARNHISEL

H.C. CORDES M

R.C. HANES

DATE 8-5-96

WEATHER SUNNY

TEMP. +75°F

ROUTE SR 19

COUNTY OTTAWA

TOWNSHIP SALEM

SECTION 8

T⁸N R¹⁵E

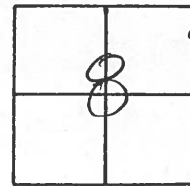
TYPE MONUMENT PK & WASHER

~~TO SURFACE~~ - BELOW 3"

~~TO~~ - & PAV'T. - RIGHT 1.8'

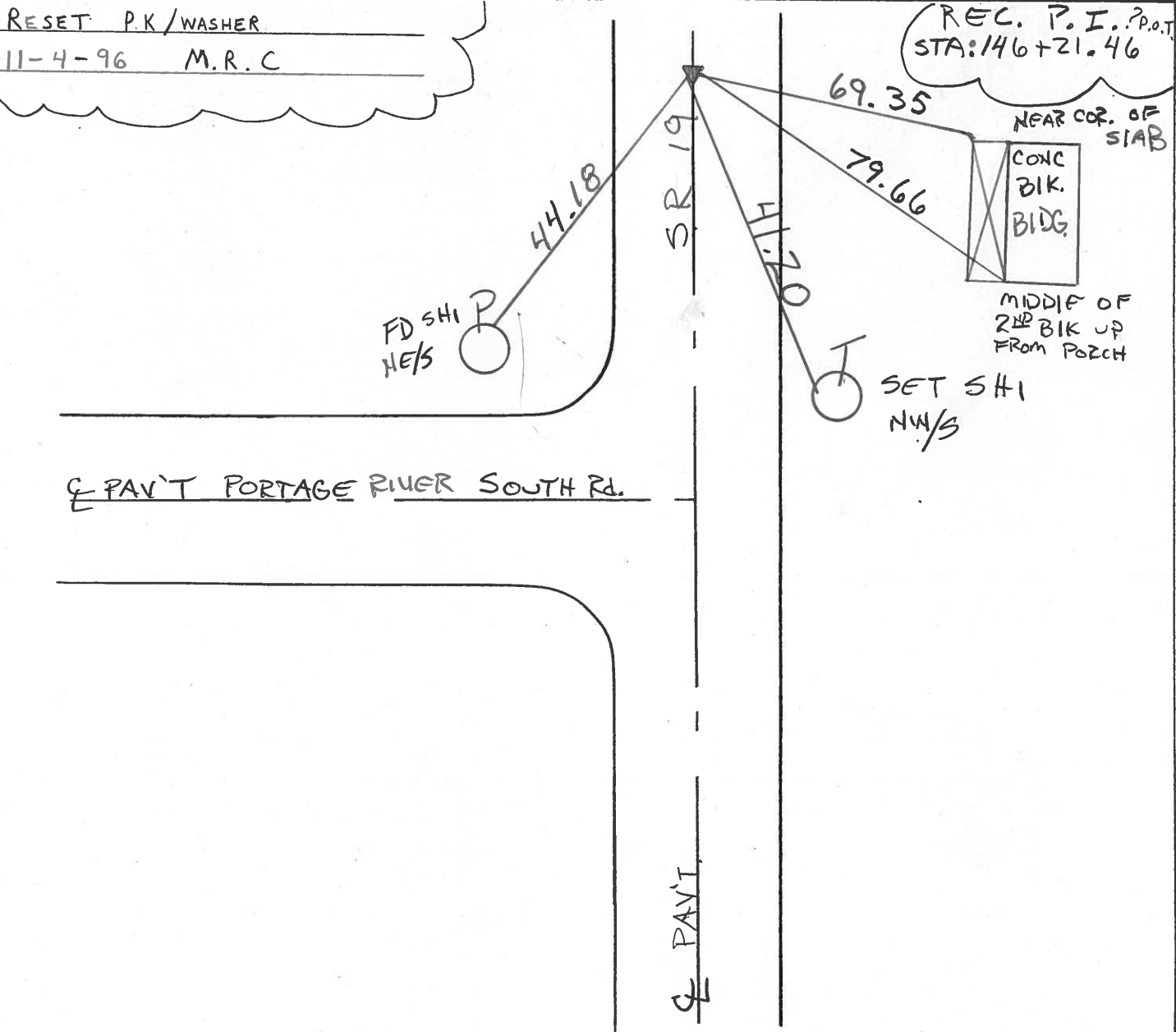
9.3 TO RT EDGE PAVEMENT

S.L.M. 146+34



RESET P.K/WASHER

11-4-96 M.R.C



O.D.O.T. DISTRICT 2 SURVEY OFFICE

PERSONNEL _____

REFERENCE NO. 14

SHEET 14 OF _____

NOTES CRONIN

H.C. RIPPLE

R.C. GEYMAN

DATE 7/18/89

WEATHER OVERCAST

TEMP. 40°

ROUTE #19

COUNTY OTTAWA

TOWNSHIP SALEM

SECTION 9

T 6 N R 15 E

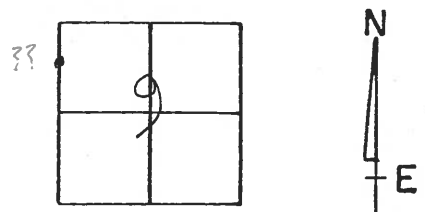
TYPE MONUMENT P.K. & WASHER

ON SURFACE - BELOW _____

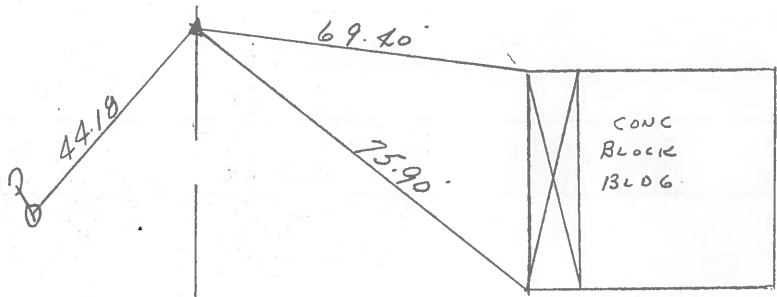
LEFT - & PAV'T. - RIGHT 2.0t

TO _____ EDGE PAVEMENT

S.L.M. _____ (146+32-1924 PLAN)
146+21.46



P.I. (P.O.T. ??)
P.K. & WASHER ATOP P.K.
ATOP I.PIN BELOW
SURFACE



County OTTAWA S.R. 19

Date 7-27-81

Township SALEM

Weather Partly Cloudy

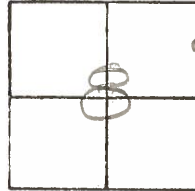
Section 8

Temp. +70°

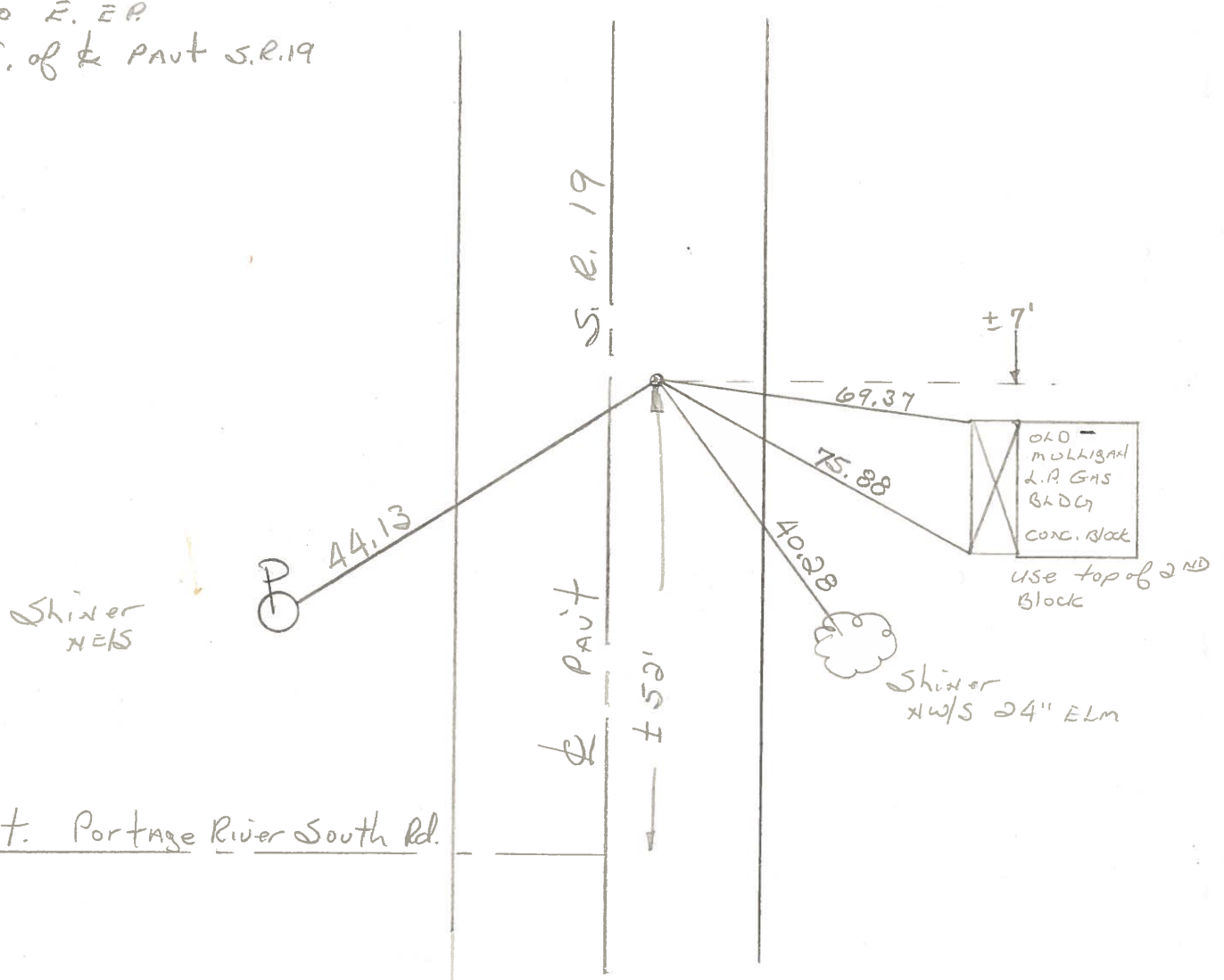
T&N, RISE

Personnel HOFFmax
Householder
Loehrke

14



Set P.K. Nail & Washer
14.5' to W. E.P.
10.2' to E. E.P.
2.3' E. of & PAUT S.R. 19



& PAUT. Portage River South Rd.

P. I. STA. 146 + 21.46

PERSONNEL TITLE PERSONNEL TITLE

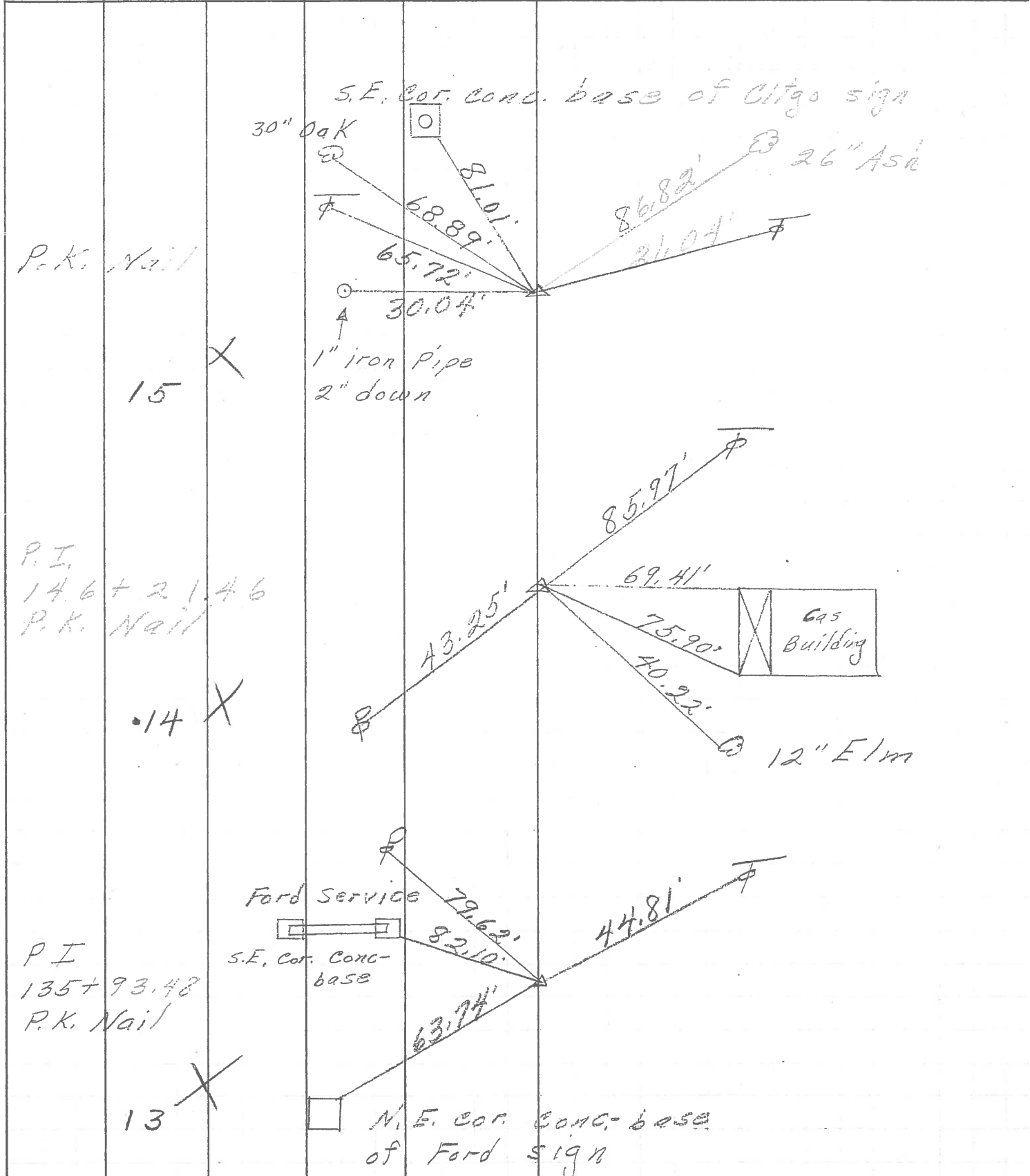
COUNTY Ottawa DATE 5-4-71

S. R. 19 WEATHER

SEC. 8 & 9 TEMP.

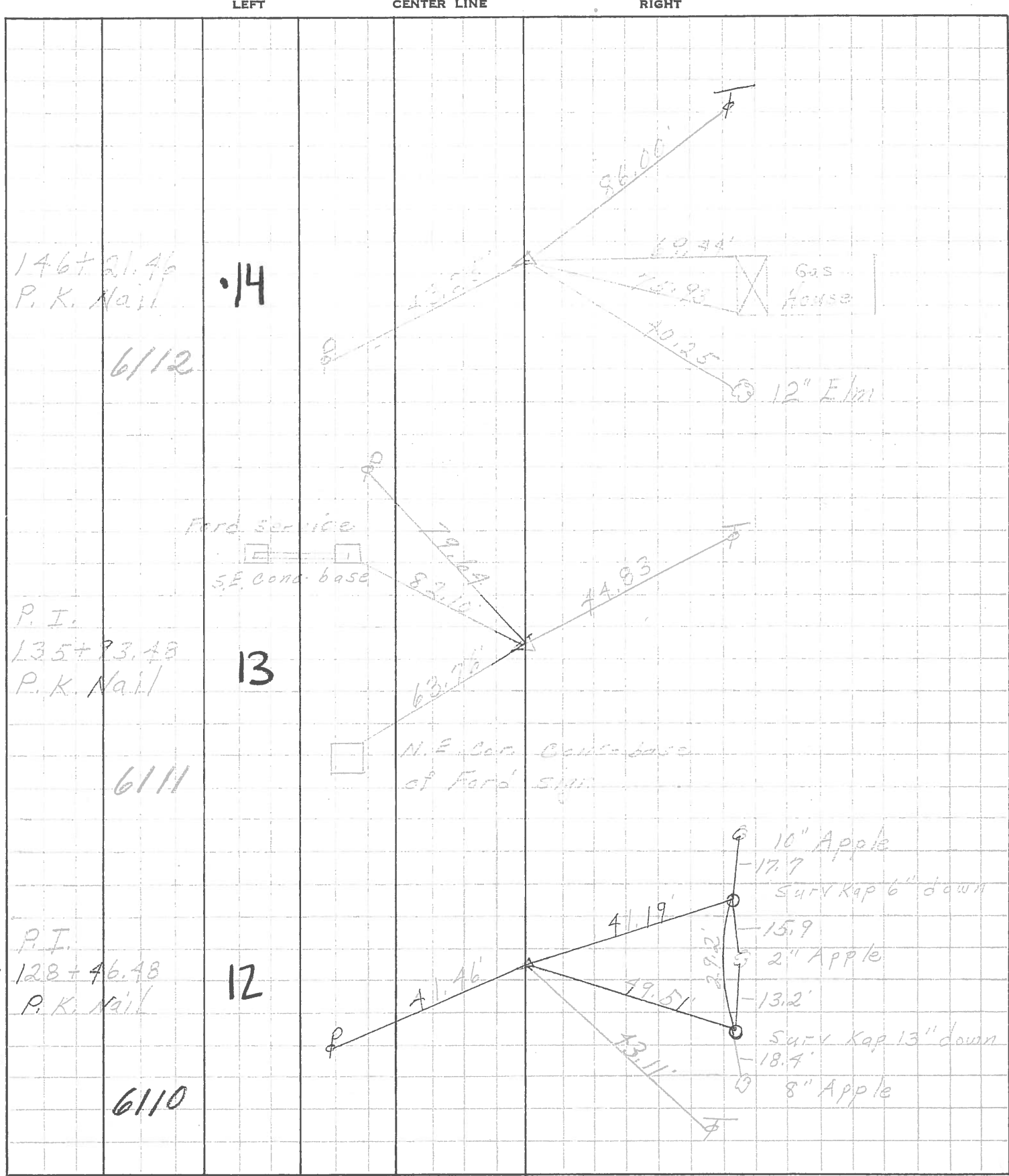
DESCRIPTION Sandusky Co. Line to Oak Harbor JOB NO.

LEFT CENTER LINE RIGHT



PERSONNEL	TITLE	PERSONNEL	TITLE	COUNTY	DATE
Schneider				Ottawa	5-13-68
Mosser				S. R. 29	WEATHER Fair
Barbour				SEC. San. Co. Line - North	TEMP. 60°
Redding					

DESCRIPTION: Ties for Control Points JOB NO. _____



PERSONNEL	TITLE	PERSONNEL	TITLE
Schindler			
Mosser			
Zahn			
Schwartz			

COUNTY St. Lawrence DATE 2-19-63
 S. R. 10719 WEATHER Cloudy - Snow
 SEC. 20th & 21st - North TEMP 22°

DESCRIPTION Ties for Center JOB NO. _____

