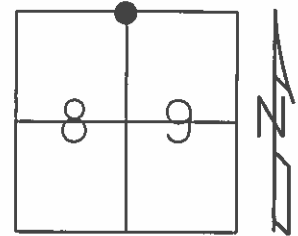


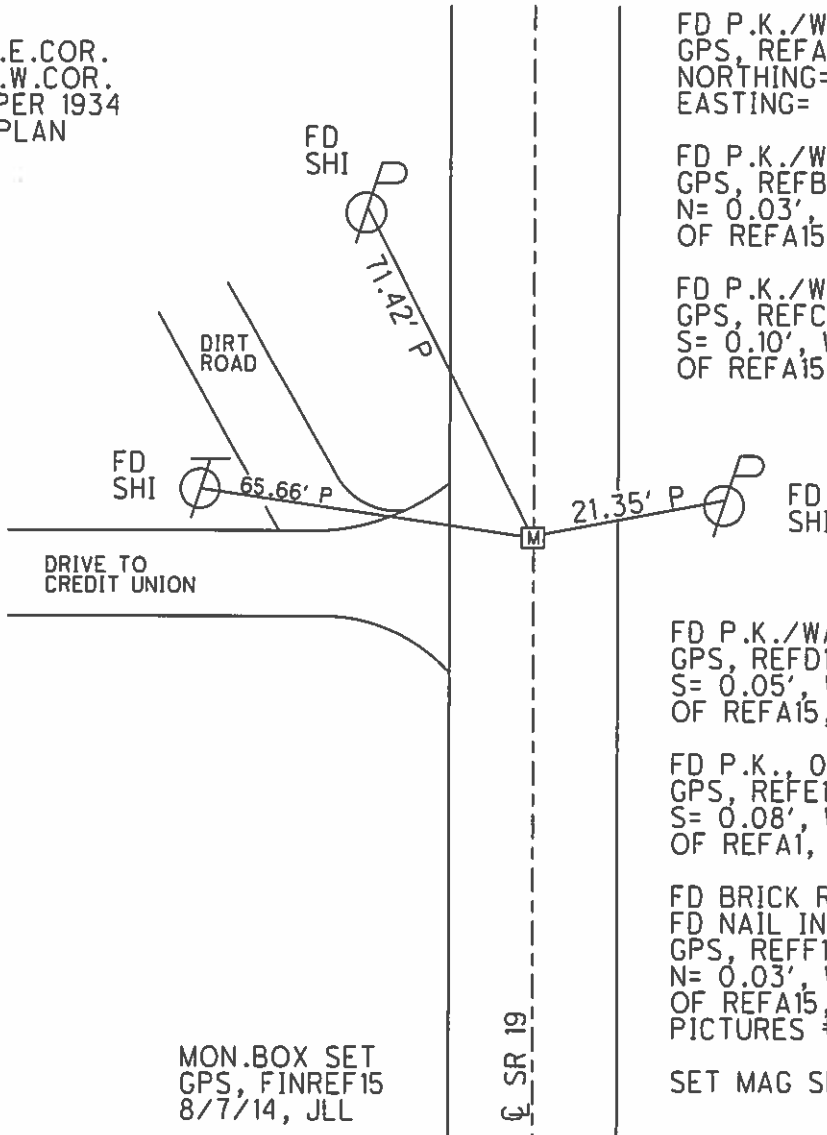
O.D.O.T. DISTRICT 2 SURVEY OFFICE (USE ONLY)

PERSONNEL _____ REFERENCE NO. 15 SHEET 18 OF 23
 NOTES LEU DATE 8/7/14 ROUTE SR 19
 H.C. WESTFALL WEATHER SUNNY COUNTY OTTAWA
 R.C. ALLEN TEMP. 72° TOWNSHIP SALEM
RHOADES SECTION 8, 9
THOMAS, MEYER T 6 N R 15 E

TYPE MONUMENT MON.BOX
~~ON SURFACE~~ - BELOW 0.98'
 LEFT - Q PAV'T - ~~RIGHT~~ 0.6'
TO - EDGE PAVEMENT
 S.L.M. 159+12 REC.
 GRID: NORTHING: 669085.530 EASTING: 1791740.494



RECORD:
 SEC.8 N.E.COR.
 SEC.9 N.W.COR.
 P.O.T. PER 1934
 BRIDGE PLAN



FD P.K./WASHER, ON SURFACE
 GPS, REFA15
 NORTHING= 669085.509
 EASTING= 1791740.599

FD P.K./WASHER, 0.25' DOWN
 GPS, REFB15
 N= 0.03', W= 0.06'
 OF REFA15, P.K./WASHER

FD P.K./WASHER, 0.42' DOWN
 GPS, REFC15
 S= 0.10', W= 0.09'
 OF REFA15, P.K./WASHER

FD P.K./WASHER, 0.69' DOWN
 GPS, REFD15
 S= 0.05', W= 0.03'
 OF REFA15, P.K./WASHER

FD P.K., 0.72' DOWN
 GPS, REFE15
 S= 0.08', W= 0.06'
 OF REFA1, P.K./WASHER

FD BRICK RD, 1.00' DOWN
 FD NAIL IN 1/2" IPIPE, 0.98' DOWN
 GPS, REFF15
 N= 0.03', W= 0.08'
 OF REFA15, P.K./WASHER
 PICTURES #435 & #436

SET MAG SPIKE

MON.BOX SET
 GPS, FINREF15
 8/7/14, JLL

Q SR 19

O.D.O.T. DISTRICT 2 SURVEY OFFICE (USE ONLY)

PERSONNEL

REFERENCE NO. 15

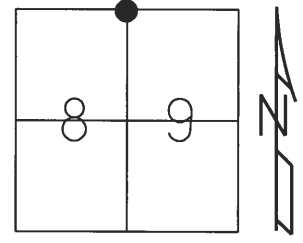
SHEET OF

NOTES RHAODES
 H.C. ROUSOS
 R.C. WESTFALL
LEU

DATE 10/29/13
 WEATHER FAIR
 TEMP. 50°

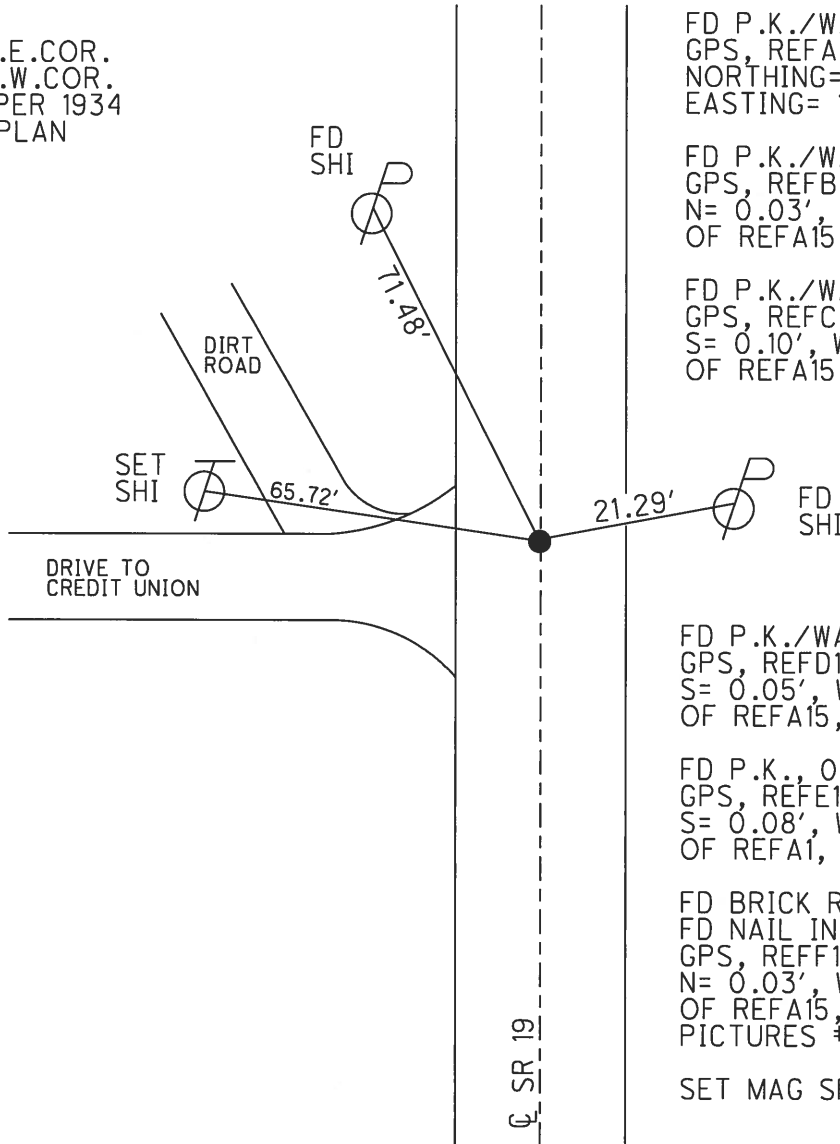
ROUTE SR 19
 COUNTY OTTAWA
 TOWNSHIP SALEM
 SECTION 8, 9
 T 6 N R 15 E

TYPE MONUMENT NAIL IN 1/2" IPIPE
~~ON SURFACE~~ - BELOW 0.98'
 LEFT - ℄ PAV'T - RIGHT ON
 TO EDGE PAVEMENT
 S.L.M. 159+12 REC.



Grid: Northing: 669085.476 Easting: 1791740.513

RECORD:
 SEC.8 N.E.COR.
 SEC.9 N.W.COR.
 P.O.T. PER 1934
 BRIDGE PLAN



FD P.K./WASHER, ON SURFACE
 GPS, REFA15
 NORTHING= 669085.509
 EASTING= 1791740.599

FD P.K./WASHER, 0.25' DOWN
 GPS, REFB15
 N= 0.03', W= 0.06'
 OF REFA15, P.K./WASHER

FD P.K./WASHER, 0.42' DOWN
 GPS, REFC15
 S= 0.10', W= 0.09'
 OF REFA15, P.K./WASHER

FD P.K./WASHER, 0.69' DOWN
 GPS, REFD15
 S= 0.05', W= 0.03'
 OF REFA15, P.K./WASHER

FD P.K., 0.72' DOWN
 GPS, REFE15
 S= 0.08', W= 0.06'
 OF REFA1, P.K./WASHER

FD BRICK RD., 1.00' DOWN
 FD NAIL IN 1/2" IPIPE, 0.98' DOWN
 GPS, REFF15
 N= 0.03', W= 0.08'
 OF REFA15, P.K./WASHER
 PICTURES #435 & #436

SET MAG SPIKE

O.D.O.T. DISTRICT 2 SURVEY OFFICE

PERSONNEL _____

REFERENCE NO. 15

SHEET 14 OF 22

NOTES BARNHISEL

H.C. CORDES M

R.C. HANES

DATE 8-5-96

WEATHER SUNNY

TEMP. +75°

ROUTE SR 19

COUNTY OTTAWA

TOWNSHIP SALEM

SECTION 5

T&M R 15 E

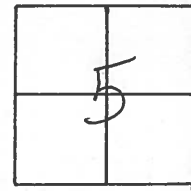
TYPE MONUMENT PK/WASHER

~~ON SURFACE~~ - BELOW 2"

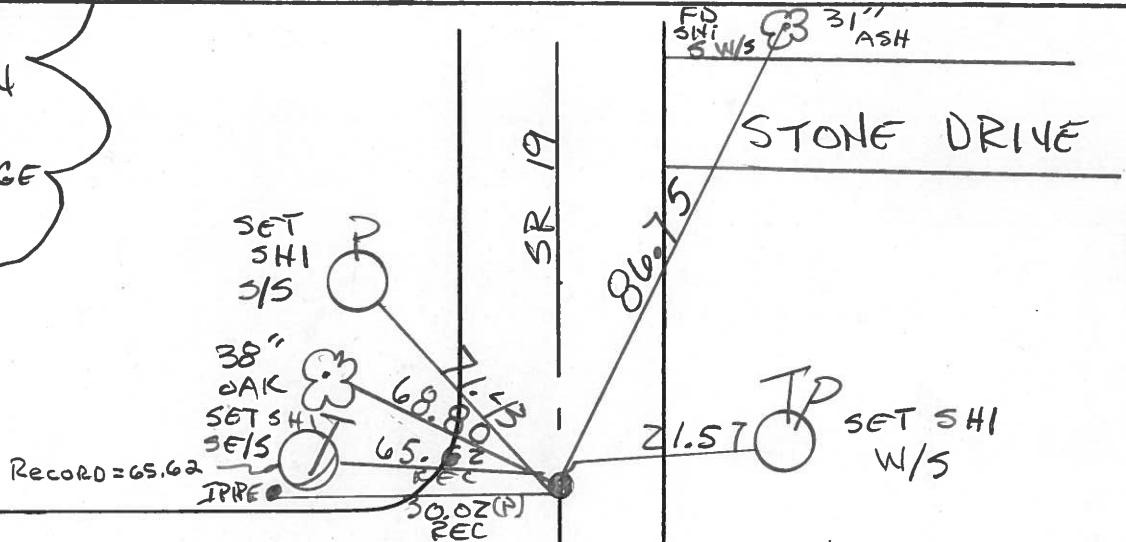
LEFT- & PAV'T. - ~~_____~~ 1.1

10.0 TO LT EDGE PAVEMENT

S.L.M. 159+12



P.O.T
PK ATOP I.PIN
SEC. COR
PER 1934 BRIDGE
PLAN



DRIVE TO
OHIO DEHEY. INC.

RESET P.K/WASHER

11-4-96 . M.R.C

& PAV'T.

O.D.O.T. DISTRICT 2 SURVEY OFFICE

PERSONNEL _____

REFERENCE NO. 15

SHEET 15 OF _____

NOTES CRONIN

H.C. RIPPLE

DATE 4/18/89

ROUTE # 19

R.C. GEYMAN

WEATHER OVERCAST

COUNTY OTTAWA

TEMP. 40°

TOWNSHIP SALEM

SECTION 9

T 6 N R 15 E

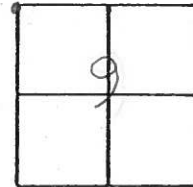
TYPE MONUMENT P.K. E WASHER

ON SURFACE - BELOW 2"

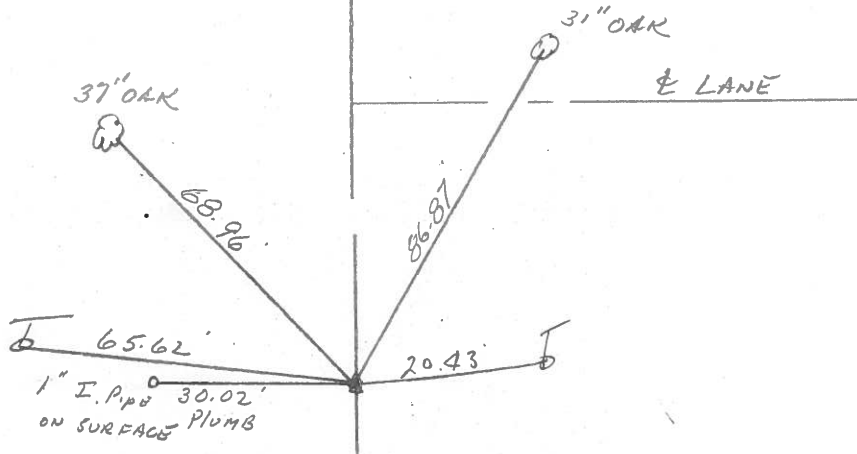
LEFT - & PAV'T. - RIGHT 1 1/2'

TO _____ EDGE PAVEMENT

S.L.M. _____



P.O.T.
P.K. ATOP I. PIN BELOW
SURFACE - SEC. CORNER
PER 1931 BRIDGE PLANS



County OTTAWA S.R. 19

Township SALEM

Section 5

T&N, RISE

Personnel HOFFMAN

Householder

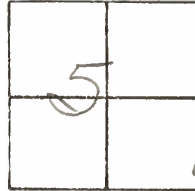
Loehrke

#15

Date 7-27-81

Weather Partly Cloudy

Temp. +70°



Set P.K. Nail & Washer

11.95 to W. E.P.

12.9 to E. E.P.

0.5' w. of & PAUT

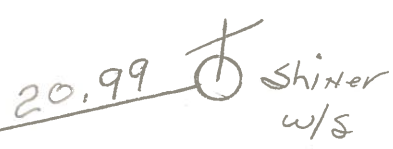
Shiner
SE/S



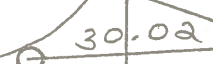
& PAUT S.R. 19



Shiner
E/S



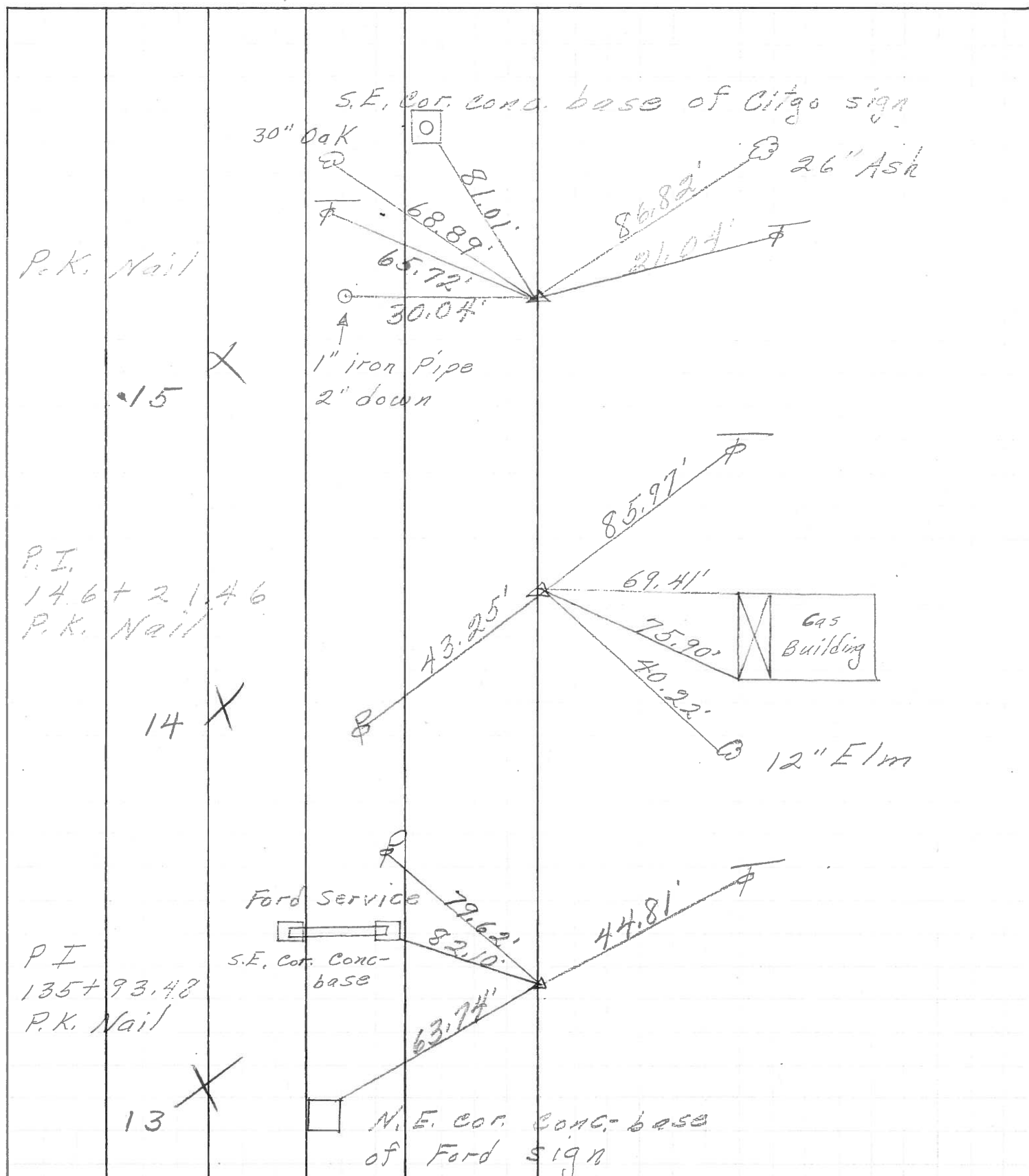
Shiner
W/S



Drive to OHIO Dehey, INC. 1" Iron Pipe @ Surface of Asphalt Drive

S.L.M. ± 159+00

PERSONNEL	TITLE	PERSONNEL	TITLE
COUNTY <u>Ottawa</u> DATE <u>5-4-71</u>			
S. R. <u>19</u> WEATHER _____			
SEC. <u>8 & 9</u> TEMP. _____			
DESCRIPTION <u>Sandusky Co. Line to Oak Harbor</u> JOB NO. _____			



PERSONNEL	TITLE	PERSONNEL	TITLE
<u>Schneider</u>			
<u>Mosser</u>			
<u>Barbour</u>			
<u>Redding</u>			

COUNTY Ottawa DATE 5-13-68
 S. R. 19 WEATHER Fair
 SEC. San. Co. Line North TEMP. 60'

DESCRIPTION Ties for Control Points JOB NO. _____

