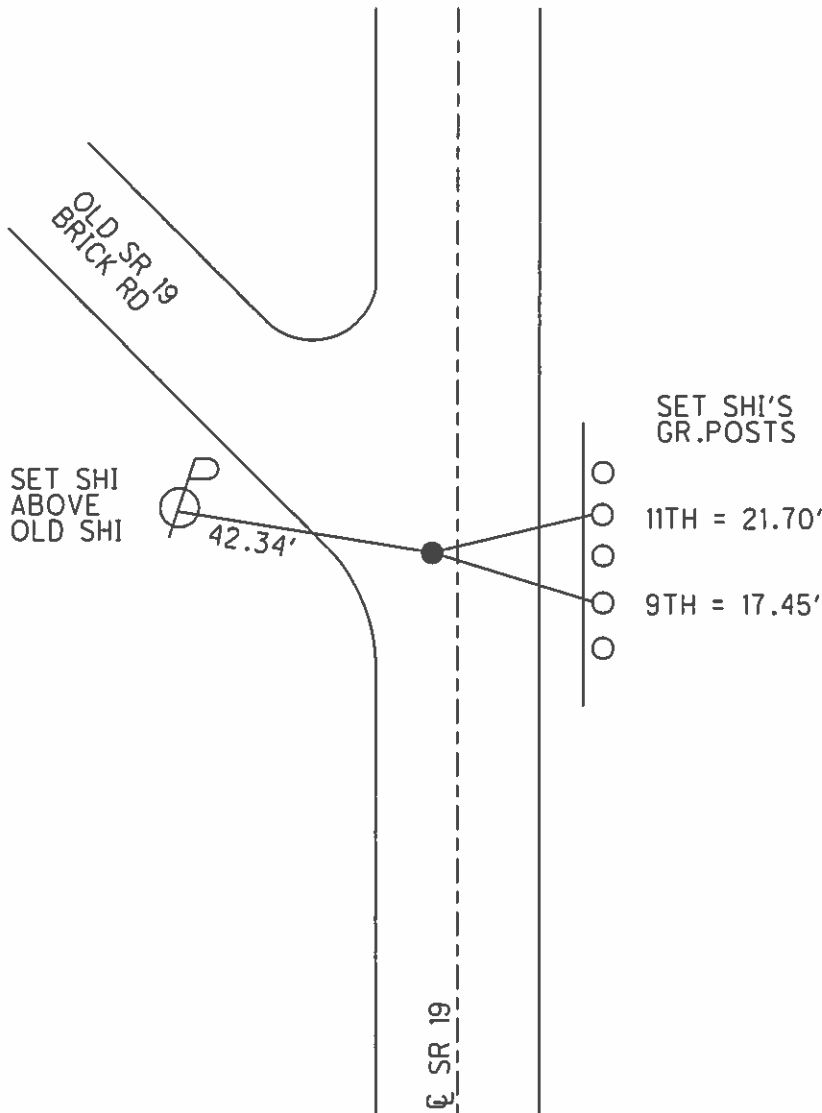
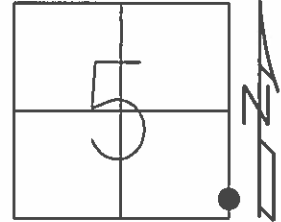


O.D.O.T. DISTRICT 2 SURVEY OFFICE (USE ONLY)

PERSONNEL \_\_\_\_\_ REFERENCE NO. 16 SHEET 19 OF 23  
 NOTES MEYER DATE 6/5/14 ROUTE SR 19  
 H.C. HOMAN WEATHER SUNNY COUNTY OTTAWA  
 R.C. THOMAS TEMP. 70° TOWNSHIP SALEM  
 \_\_\_\_\_ SECTION 5  
 \_\_\_\_\_ T 6 N R 15 E

TYPE MONUMENT P.K./WASHER  
 ON SURFACE - ~~BELOW~~ ON \_\_\_\_\_  
 LEFT - C PAV'T - ~~RIGHT~~ 2.5'  
8.2' TO LT EDGE PAVEMENT  
 S.L.M. 164+27.59  
 GRID: NORTHING: 669614.069 EASTING: 1791738.222



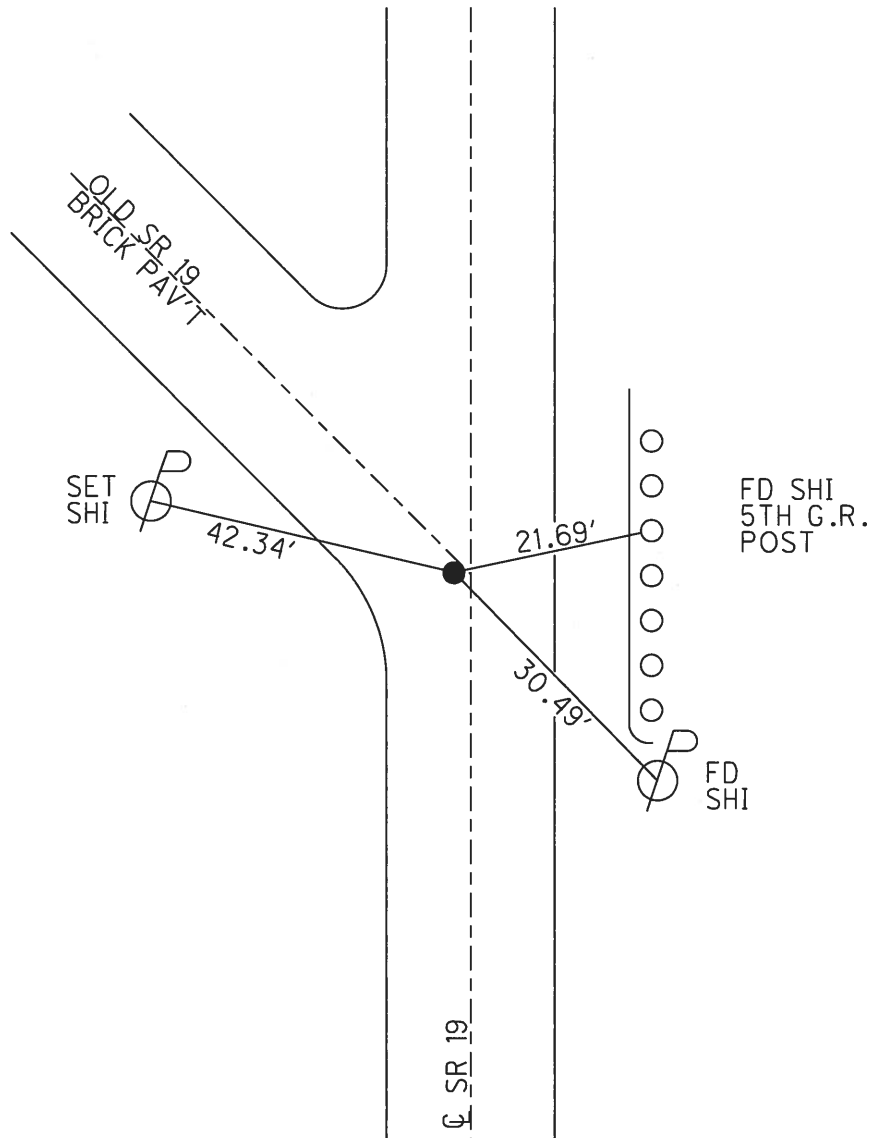
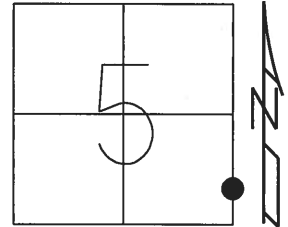
RECORD: P.I.  
 STA. 0+71.20  
 PER 1931 BRIDGE PLAN  
 $\Delta = 4^{\circ}25'$  RT  
 FD P.K./WASHER  
 8/5/96, MB  
 SET P.K./WASHER  
 11/4/96, MRC  
 FD P.K./WASHER  
 GPS, REF16  
 1/15/13, MC  
 6/6/14, EBW  
 SET MAG/WASHER  
 GPS, FINREF16  
 7/31/14, JLL

O.D.O.T. DISTRICT 2 SURVEY OFFICE (USE ONLY)

PERSONNEL \_\_\_\_\_ REFERENCE NO. 16 SHEET 1 OF 33  
NOTES NUHFER DATE 7/13/05 ROUTE SR 19  
H.C. HUSS WEATHER SUNNY COUNTY OTTAWA  
R.C. RYAN H. TEMP. 75° TOWNSHIP SALEM  
SECTION 5  
T 6 N R 15 E

TYPE MONUMENT P.K./WASHER  
ON SURFACE - ~~BELOW~~ ON  
LEFT - ☉ PAV'T - ~~RIGHT~~ 2.4'  
8.2' TO LT EDGE PAVEMENT  
S.L.M. 164+52

Grid: Northing: 669613.993 Easting: 1791738.175



O.D.O.T. DISTRICT 2 SURVEY OFFICE

PERSONNEL

REFERENCE NO. 16

SHEET 15 OF 22

NOTES BARNHISEL

H.C. ROUSAS

R.C. HANES

COPDES W

DATE 8-5-96

WEATHER SUNNY

TEMP. +75°

ROUTE SR 19

COUNTY OTTAWA

TOWNSHIP SALOM

SECTION 5

T & N RISE

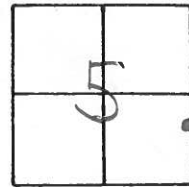
TYPE MONUMENT PK & WASHER

~~ON SURFACE~~ - BELOW 1 1/2"

LEFT- & PAV'T. ~~RIGHT~~ 2.4

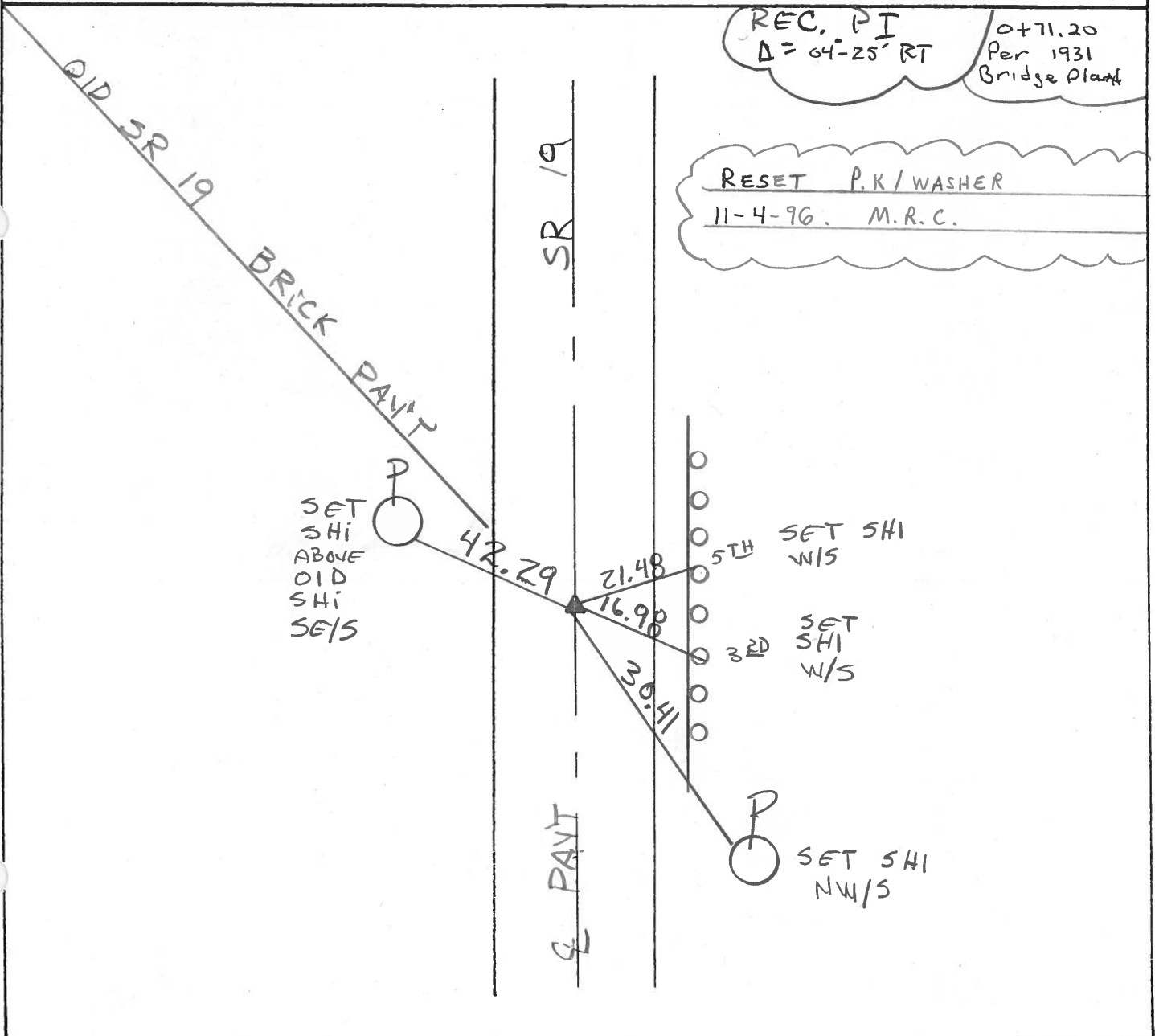
8.2 TO LT EDGE PAVEMENT

S.L.M. 164+42



REC. PI  
 $\Delta = 64-25' RT$   
 0+71.20  
 Per 1931  
 Bridge Plans

RESET P.K/WASHER  
 11-4-96. M.R.C.



# O.D.O.T. DISTRICT 2 SURVEY OFFICE

PERSONNEL \_\_\_\_\_

REFERENCE NO. 16

SHEET 16 OF \_\_\_\_\_

NOTES CRONIN

H.C. RIPPLE

R.C. GEYMAN

DATE 4/19/89

WEATHER SUNNY

TEMP. 56°

ROUTE #19

COUNTY OTTAWA

TOWNSHIP SALEM

SECTION 5

T 6 N R 15 E

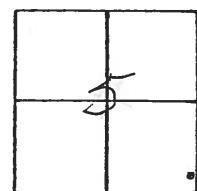
TYPE MONUMENT P.K. WASHER

ON SURFACE - BELOW 1 1/2"

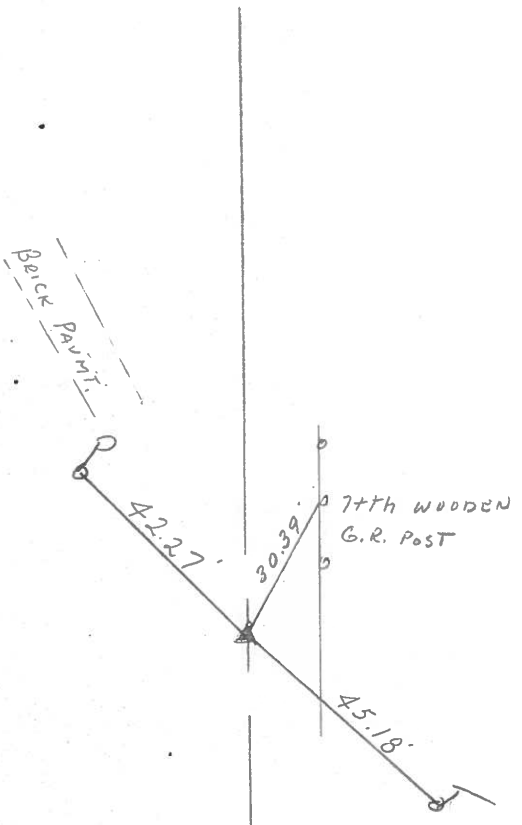
LEFT - € PAV'T. - RIGHT 3.0'±

TO EDGE PAVEMENT

S.L.M. 0 + 71.20 PER 1931 BRIDGE PLAN



A = 04° 25' RT. PLAN  
PI  
P.K. BELOW



County OTTAWA S.R. 19

Date 7-27-81

Township SALEM

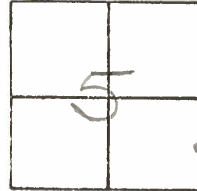
Weather cloudy

Section 5

Temp. +70°

T8N, R15E

Personnel HOFFMAN



Householder

Loehrke

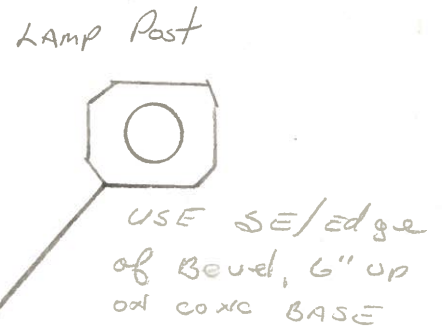
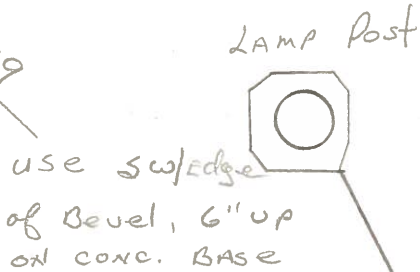
#16

\_\_\_\_\_

\_\_\_\_\_

Set P.K. Nail & Washer

Old S.R. 19  
Brick Pavt



Shiner SE/S



58.34

S.R. 19

62.34

Pavt

45.18



S.L.M. ± 164 ± 00

PERSONNEL TITLE PERSONNEL TITLE

COUNTY Ottawa DATE 4-25-78

S. R. 19 WEATHER Fair

SEC. 554 TEMP. 45°

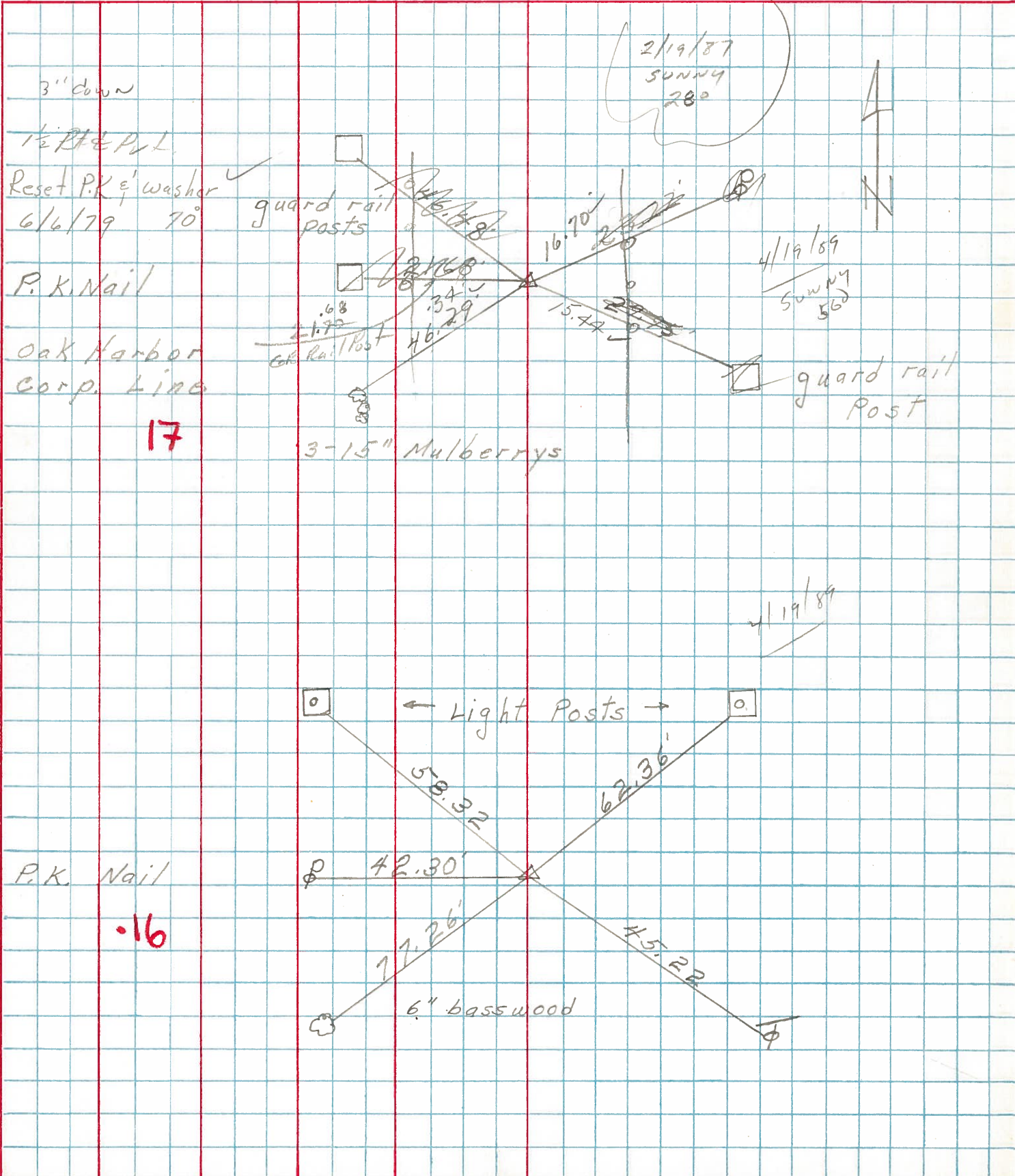
DESCRIPTION Oak Harbor & 1 point South

JOB NO.

LEFT

CENTER LINE

RIGHT

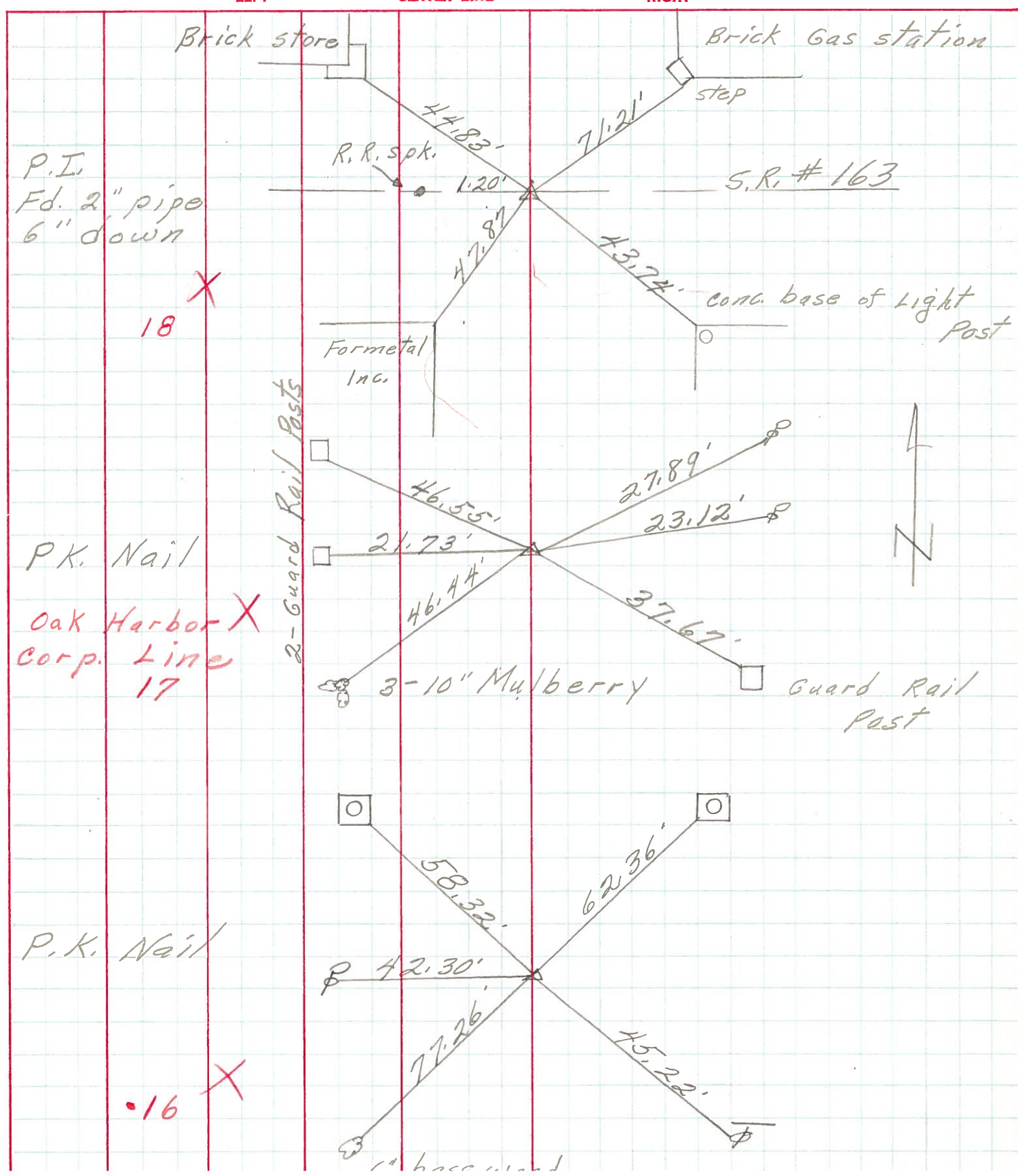


17

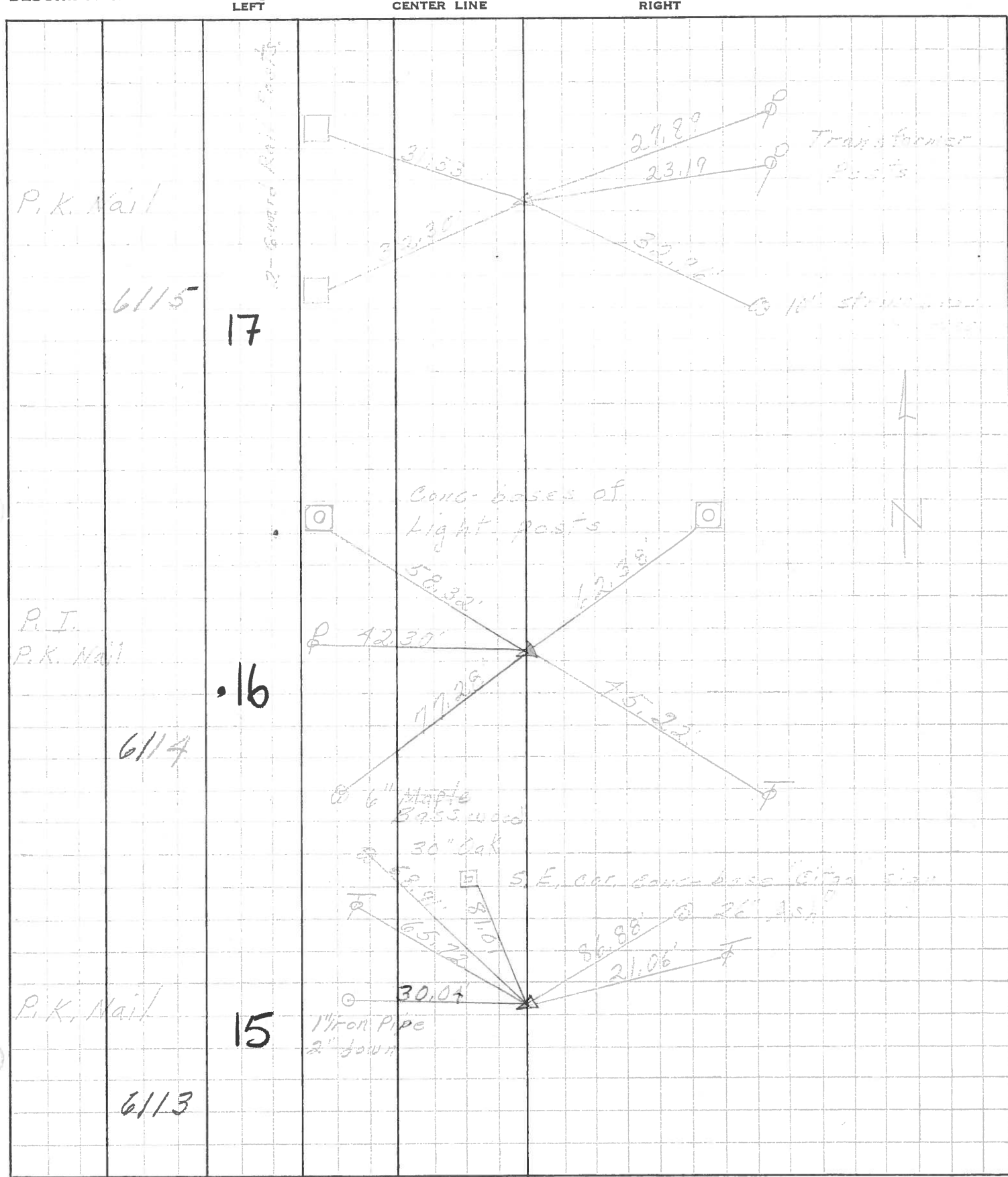
16



PERSONNEL	TITLE	PERSONNEL	TITLE
COUNTY <u>Ottawa</u> DATE <u>5-4-71</u>			
S. R. <u>19</u> WEATHER _____			
SEC. <u>5 &amp; 4</u> TEMP. _____			
DESCRIPTION <u>Oak Harbor &amp; 1 point south</u>			JOB NO. _____



PERSONNEL	TITLE	PERSONNEL	TITLE	COUNTY	<u>Ottawa</u>	DATE	<u>5-13-68</u>
<u>Schneider</u>				S. R.	<u>19</u>	WEATHER	<u>Fair</u>
<u>Mosser</u>				SEC.	<u>San Co. Line North</u>	TEMP.	<u>60°</u>
<u>Barbour</u>				DESCRIPTION <u>Ties for Control Points</u>			
<u>Redding</u>				JOB NO. _____			





PERSONNEL	TITLE	PERSONNEL	TITLE
Schneider			
Kowalski			
Zahn			
Schwartz			

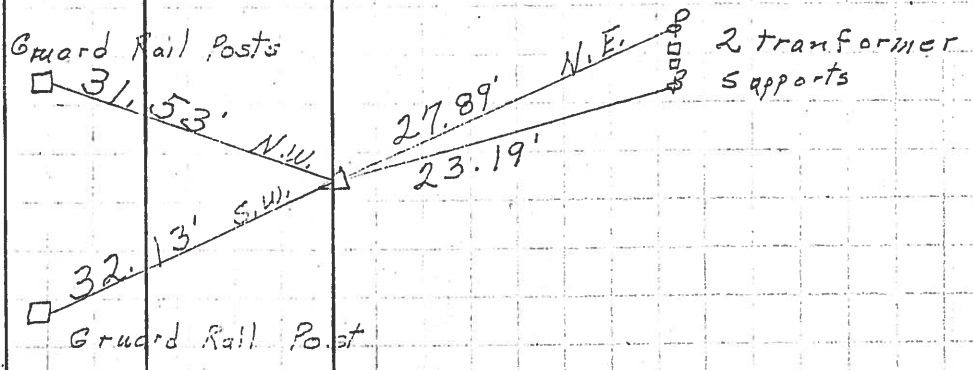
COUNTY O. Iowa DATE 3-12-63  
 S. R. # 17 WEATHER Fair  
 SEC. Sandusky Co. Line - North TEMP. 50°

DESCRIPTION Ties for Control Points JOB NO. \_\_\_\_\_

LEFT CENTER LINE RIGHT

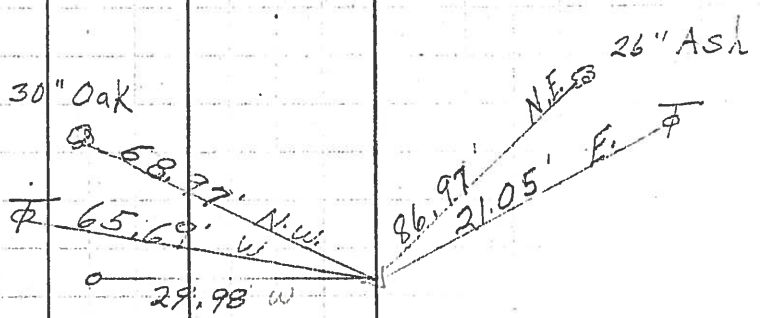
P.I. **17**

Good ties  
 Set P.K. Nail  
 Reset P.K. Nail  
 10-23-63



P.I. **16**

Found P.K. Nail  
 Reset P.K. Nail 1" Iron pipe  
 10-23-63



P.I. **16**

Found 7/8" Iron Pin  
 7" below surface  
 Reset P.K. Nail  
 10-23-63

