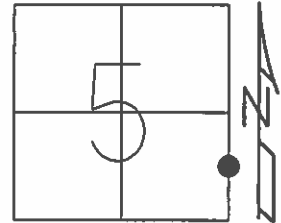


O.D.O.T. DISTRICT 2 SURVEY OFFICE (USE ONLY)

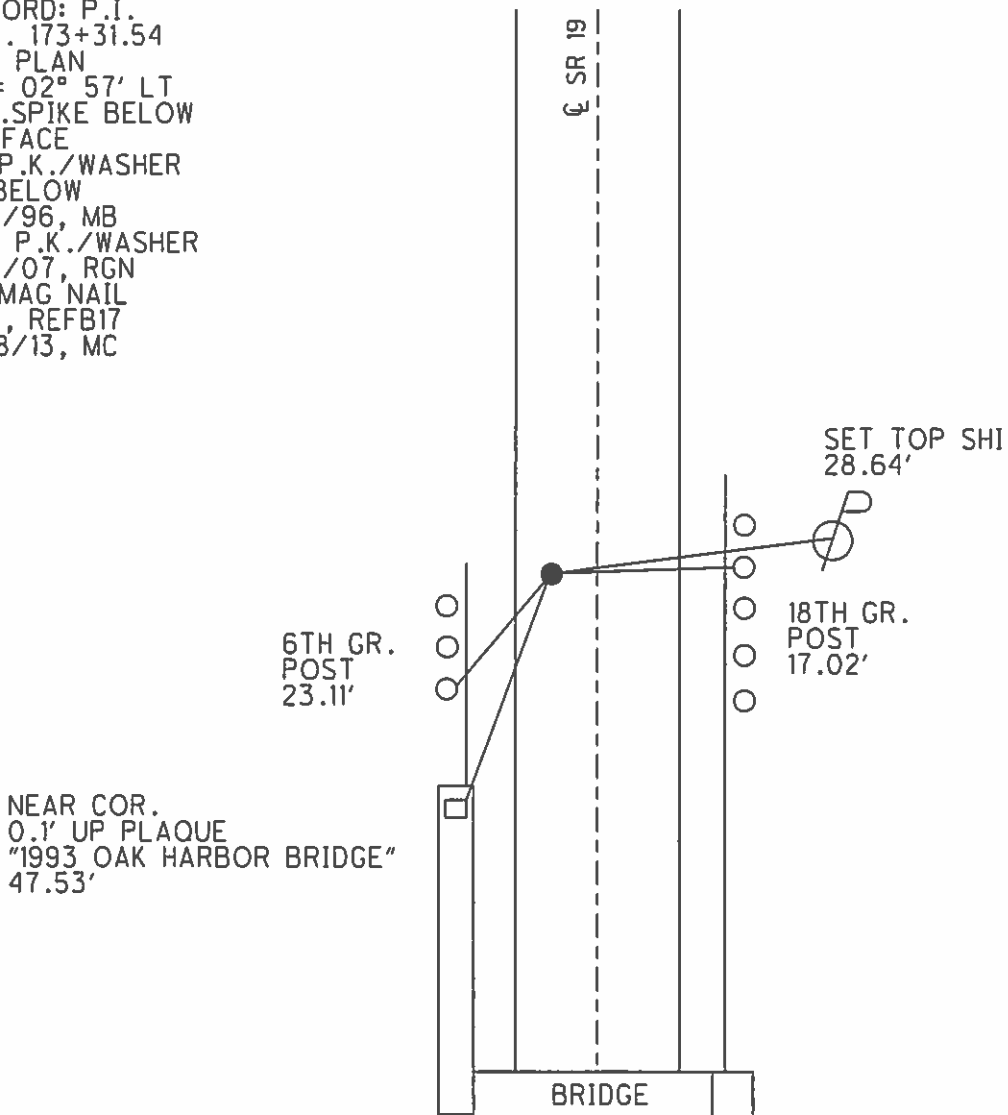
PERSONNEL _____ REFERENCE NO. 17 SHEET 20 OF 23
 NOTES HOMAN DATE 6/11/14 ROUTE SR 19
 H.C. WESTFALL WEATHER CLOUDY COUNTY OTTAWA
 R.C. LEU TEMP. 70° TOWNSHIP SALEM
 _____ SECTION 5
 _____ T 6 N R 15 E

TYPE MONUMENT MAG/WASHER
 ON SURFACE - ~~BELOW~~ ON
 LEFT - CL PAV'T - ~~RIGHT~~ 6.0'
4' TO LT EDGE PAVEMENT
 S.L.M. 174+88.35



GRID: NORTHING: 670672.256 EASTING: 1791810.917

RECORD: P.I.
 STA. 173+31.54
 1951 PLAN
 $\Delta = 02^\circ 57' \text{ LT}$
 R.R. SPIKE BELOW
 SURFACE
 FD P.K./WASHER
 3" BELOW
 8/5/96, MB
 SET P.K./WASHER
 5/9/07, RGN
 FD MAG NAIL
 GPS, REFB17
 1/28/13, MC



O.D.O.T. DISTRICT 2 SURVEY OFFICE

PERSONNEL

REFERENCE NO. 17

SHEET 16 OF 22

NOTES BARNHISEL

H.C. ROUSOS

R.C. HANES

CORDES II

DATE 8-5-96

WEATHER SUNNY

TEMP. +75°

ROUTE SR 19

COUNTY OTTAWA

TOWNSHIP SALEM

SECTION 5

T 8 N R 15 E

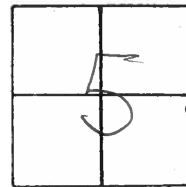
TYPE MONUMENT P.K. / WASHER

~~ON SURFACE~~ - BELOW 3"

~~LEFT - & PAINT - RIGHT~~ 1/2"

TO EDGE PAVEMENT 11+33.76 (1931 BRIDGE PLAN)

S.L.M. 173+31.54 (1951 PLAN)



NOTE: OAK HARBOR
CORP LINE

173+89.13 (REC)

CORP. LINE

P. I

$\Delta = 02^{\circ} 57' \text{ LT (PLAN)}$

$\Delta = 02^{\circ} 58' \text{ LT 1931 BRIDGE PLAN}$

R.R. SPIKE BELOW SURFACE



POINT REMOVED
 DUE TO NEW BRIDGE
 CONSTRUCTION. THIS
 POINT NOW LIES ON
 NEW BRIDGE

SR 19

E PAINT

O.D.O.T. DISTRICT 2 SURVEY OFFICE

PERSONNEL _____

REFERENCE NO. 17

SHEET ~~27~~ OF _____

NOTES CRONIN

H.C. RIPPLE

R.C. GEYMAN

DATE 4/19/89

WEATHER SUNNY

TEMP. 56°

ROUTE #19

COUNTY OTTAWA

TOWNSHIP SALEM-HARBOR ^{OAK}

SECTION 4

T. 6 N. R. 15 E

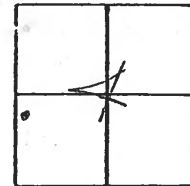
TYPE MONUMENT P.K.

ON SURFACE - BELOW 3"

LEFT- & PAV'T. - RIGHT 1 1/2"

TO EDGE PAVEMENT

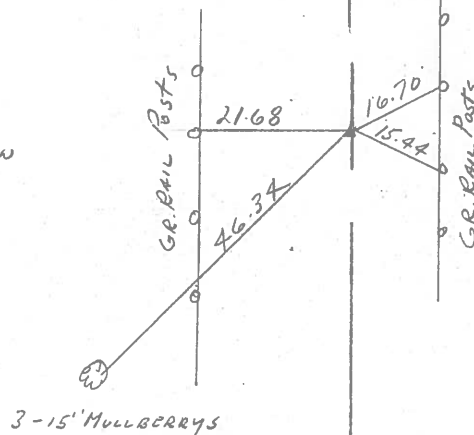
S.L.M. 11 + 33.76 (1931 BRIDGE PLAN)
173 + 31.54 (1951 PLAN)



NOTE: REMOVED
POINT
NEW BRIDGE BUILT
1995

173 + 89.13 c/l

P.I.
A = 02° 57' Lt. (PLAN)
A = 02° 58' Lt. 1931 BRIDGE PLAN
R.R. SPIKE BELOW SURFACE



County OTTAWA S.R. 19

Township SALEM

Section 5

T8N, R15E

Personnel HOFFMAN

Householder

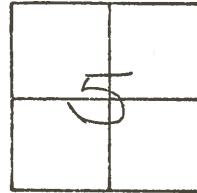
Loehrke

#17

Date 7-27-81

Weather cloudy

Temp. +70°

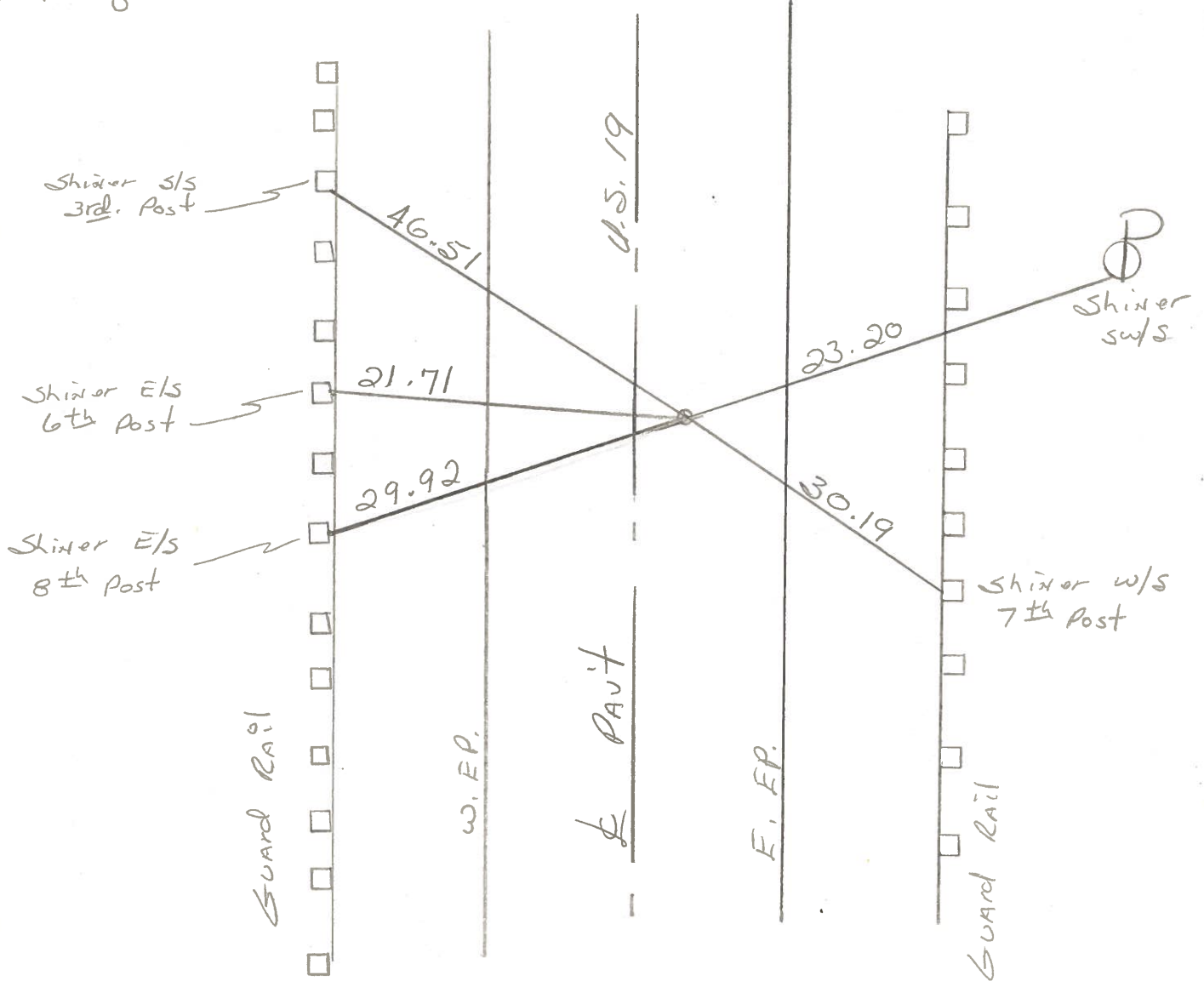


Fd. P.K. Nail & Washer @ surface

13.1' to W. EP.

10.0' to E. EP.

1.5' E. of R PAUT.



OAK HARBOR CORP. LINE

PERSONNEL TITLE PERSONNEL TITLE

COUNTY Ottawa DATE 4-25-78

S. R. 19 WEATHER Fair

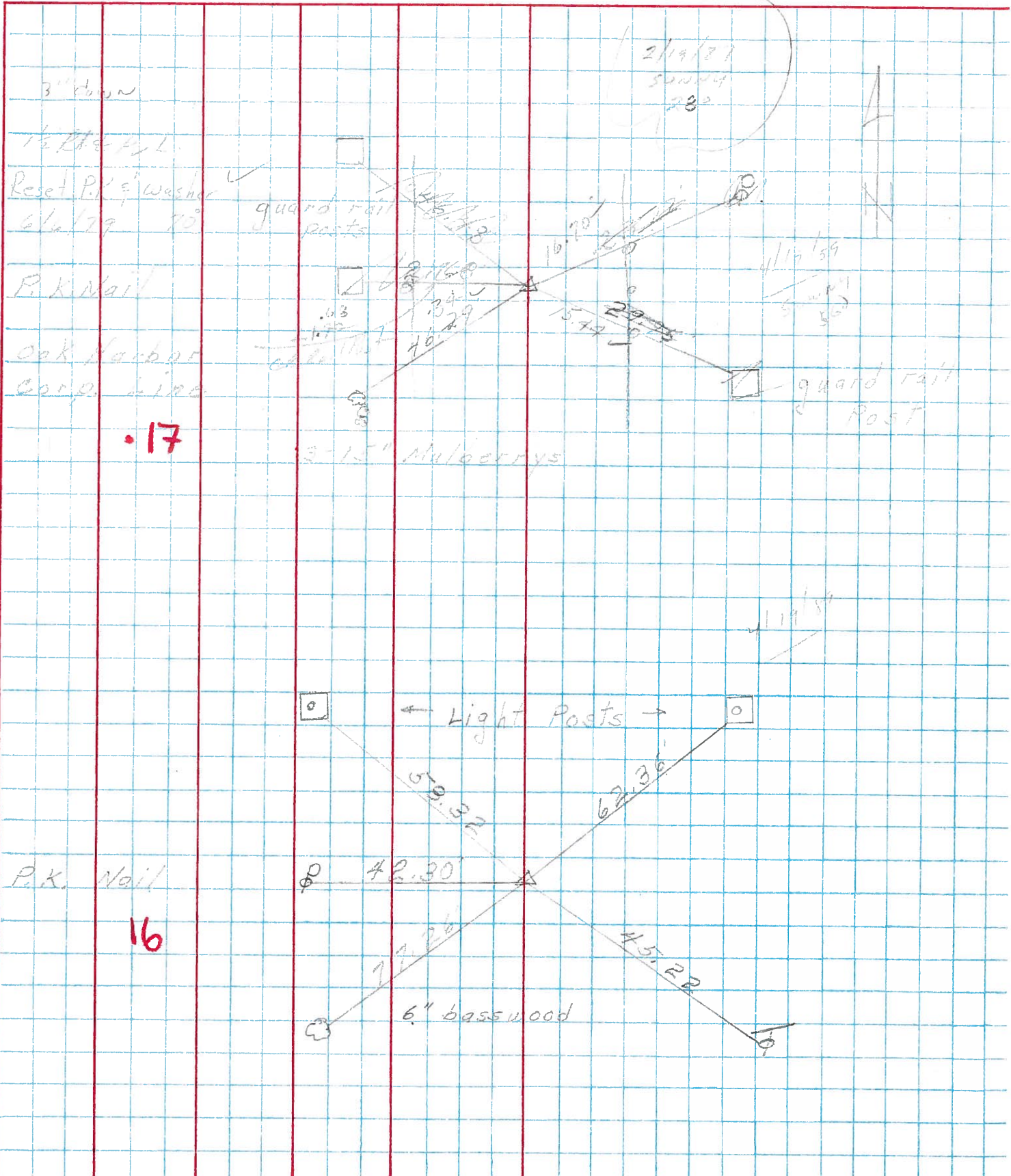
SEC. 564 TEMP. 45° -

DESCRIPTION Oak Harbor & 1 point South JOB NO.

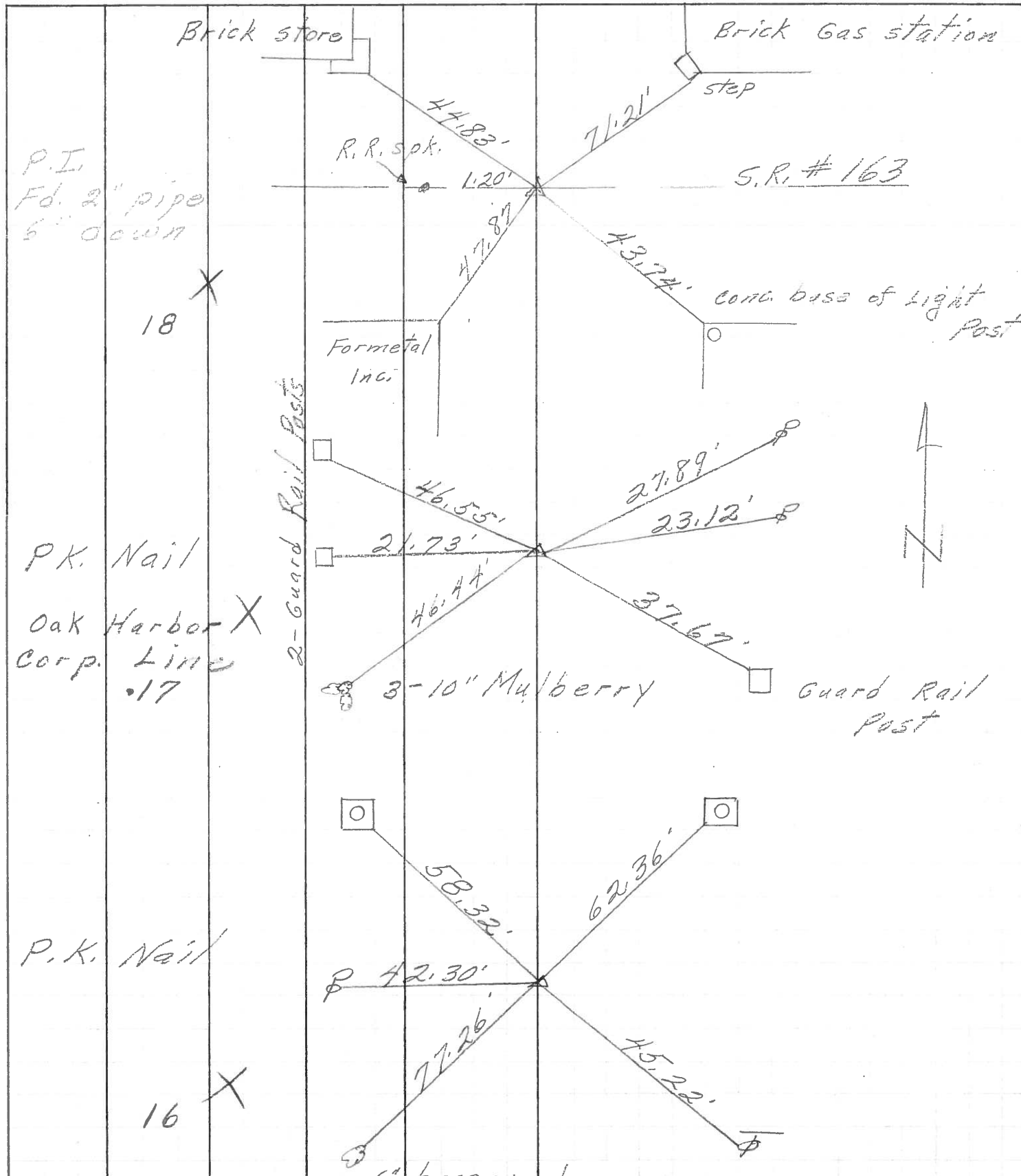
LEFT

CENTER LINE

RIGHT

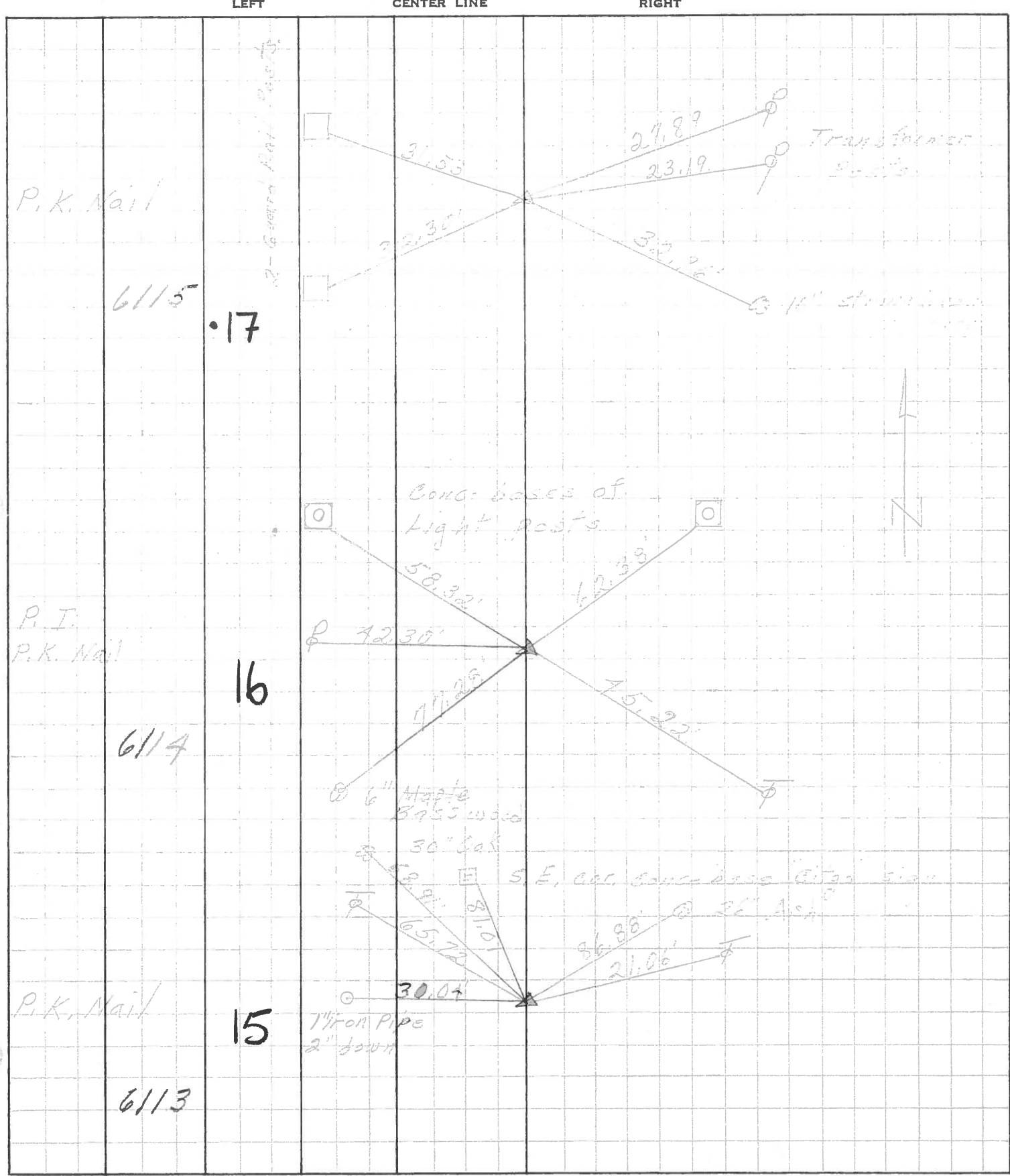


PERSONNEL	TITLE	PERSONNEL	TITLE
COUNTY <u>Ottawa</u> DATE <u>5-4-71</u>			
S. R. <u>19</u> WEATHER _____			
SEC. <u>5 & 4</u> TEMP. _____			
DESCRIPTION <u>Oak Harbor & 1 point south</u>			JOB NO. _____
	LEFT	CENTER LINE	RIGHT



PERSONNEL	TITLE	PERSONNEL	TITLE
Schneider			
Moss			
Barbault			
Redding			

COUNTY Ottawa DATE 5-13-68
 S. R. 19 WEATHER Fair
 SEC. San. Co. Line North TEMP. 60'
 DESCRIPTION Ties for Control Points JOB NO. _____



PERSONNEL	TITLE	PERSONNEL	TITLE
Schneider			
Kowalski			
Zahr			
Schwartz			

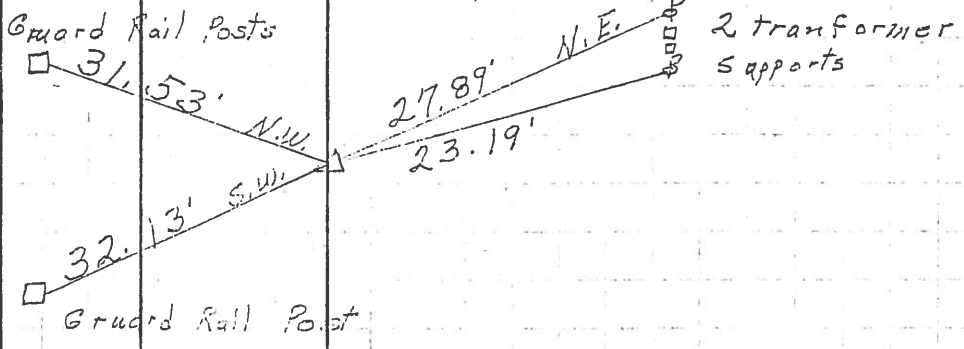
COUNTY St. Lawrence DATE 3-12-63
 S. R. # 17 WEATHER Fair
 SEC. Stanhope Co. Line - North TEMP. 50°

DESCRIPTION Ties for Central JOB NO. _____

LEFT CENTER LINE RIGHT

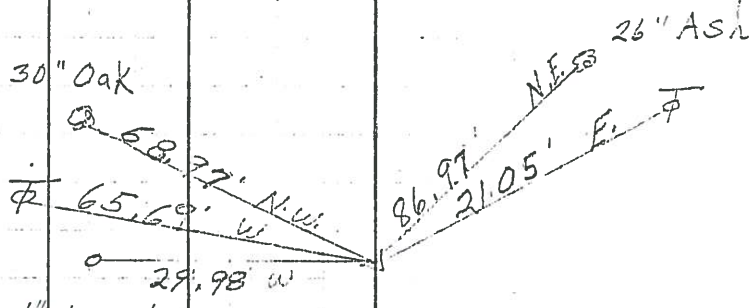
P.I. **17**

Good ties
 Set P.K. Nail
 Reset P.K. Nail
 10-23-63



P.I. **16**

Found P.K. Nail
 Reset P.K. Nail 1" Iron pipe
 10-23-63



P.I. **16**

Found 7/8" Iron Pin
 7" below surface
 Reset P.K. Nail
 10-23-63

