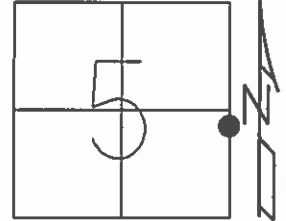


O.D.O.T. DISTRICT 2 SURVEY OFFICE (USE ONLY)

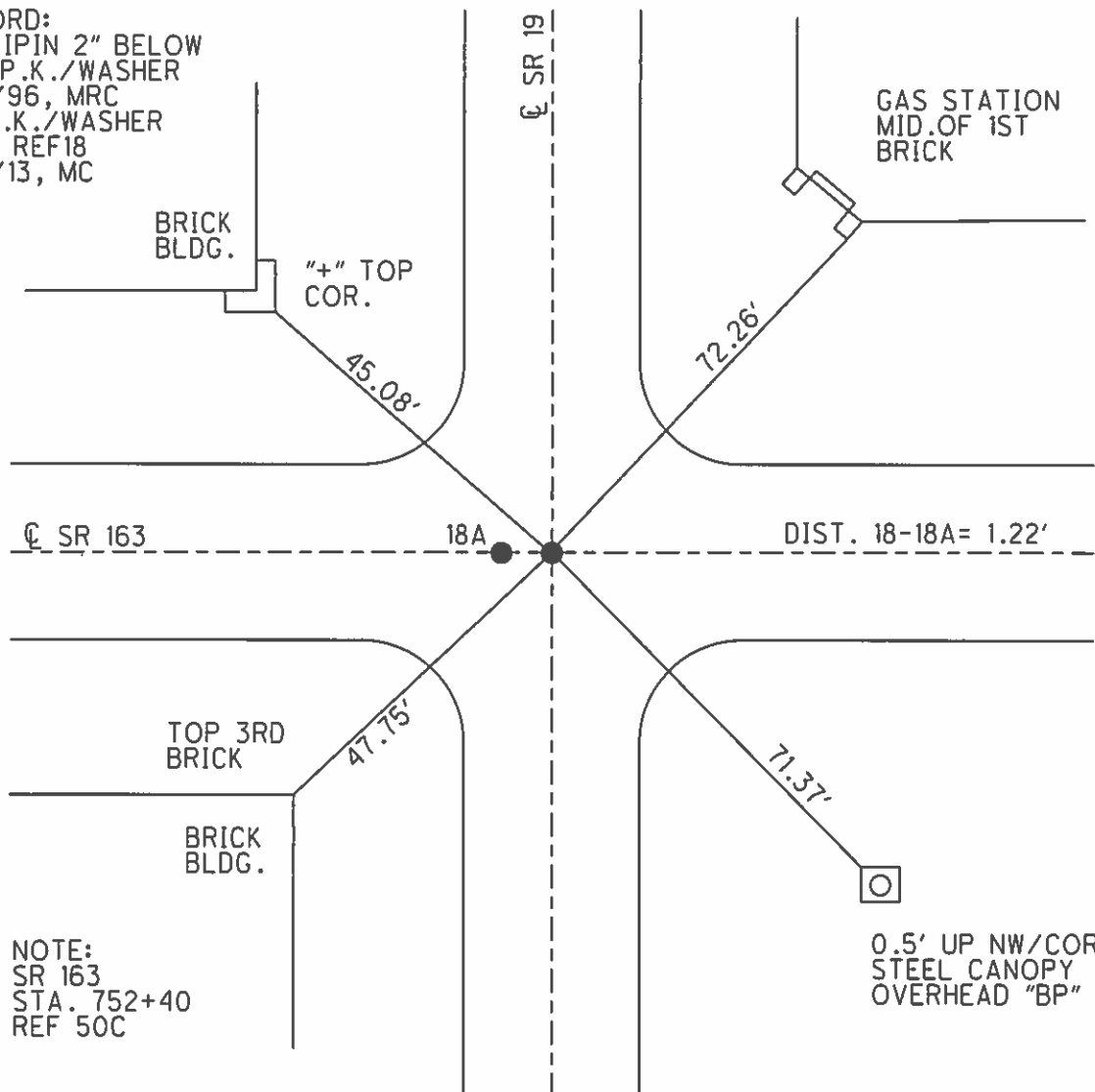
PERSONNEL _____ REFERENCE NO. 18 SHEET 22 OF 23
 NOTES NUHFER DATE 1/9/06 ROUTE SR 19
 H.C. CANTERBURY WEATHER CLOUDY COUNTY OTTAWA
 R.C. BARNHISEL TEMP. 32° TOWNSHIP SALEM
 _____ SECTION 5
 _____ T 6 N R 15 E

TYPE MONUMENT P.K./WASHER
 ON SURFACE - ~~BELOW~~ ON
 LEFT - ☉ PAV'T - RIGHT ON
 _____ TO _____ EDGE PAVEMENT
 S.L.M. 181+92.63



GRID: NORTHING: 671376.281 EASTING: 1791829.712

RECORD:
 1/2" IPIN 2" BELOW
 SET P.K./WASHER
 11/4/96, MRC
 FD P.K./WASHER
 GPS, REF18
 1/15/13, MC



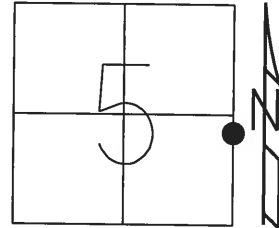
NOTE:
 SR 163
 STA. 752+40
 REF 50C

O.D.O.T. DISTRICT 2 SURVEY OFFICE (USE ONLY)

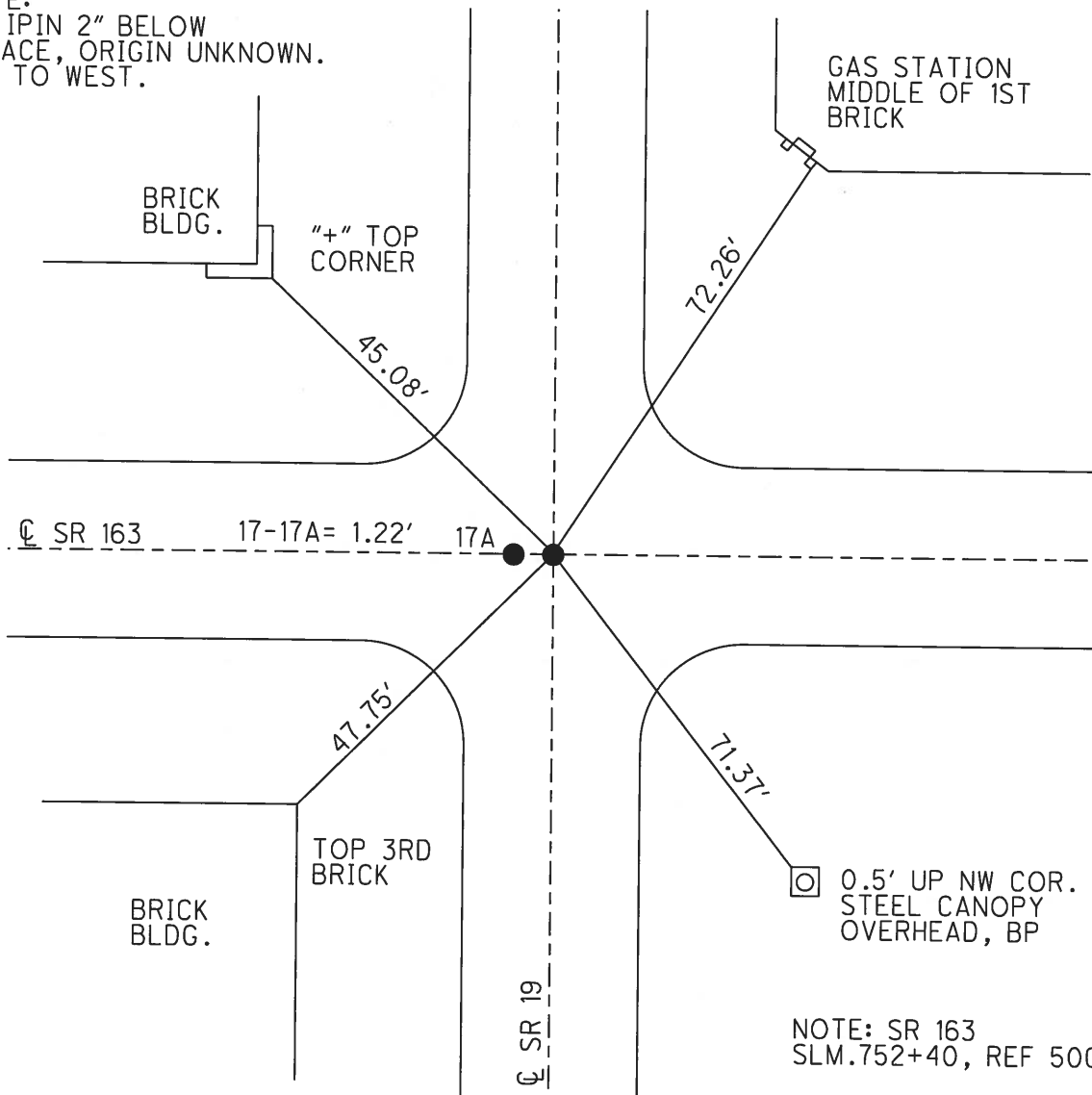
PERSONNEL _____ REFERENCE NO. 17 SHEET 3 OF 33
 NOTES NUHFER DATE 1/9/06 ROUTE SR 19
 H.C. CANTERBURY WEATHER CLOUDY COUNTY OTTAWA
 R.C. BARNHESEL TEMP. 32° TOWNSHIP SALEM
 _____ SECTION 5
 _____ T 6 N R 15 E

TYPE MONUMENT P.K./WASHER
 ON SURFACE - ~~BELOW~~ ON
 LEFT - ☉ PAV'T - RIGHT ON
- TO - EDGE PAVEMENT
 S.L.M. 182+16

Grid: Northing: 671376.343 Easting: 1791829.711



NOTE:
 1/2" IPIN 2" BELOW
 SURFACE, ORIGIN UNKNOWN.
 PT. TO WEST.



O.D.O.T. DISTRICT 2 SURVEY OFFICE

PERSONNEL

REFERENCE NO. 18#18A

SHEET 17 OF 22

NOTES BARNHISEL

H.C. ROUSOS

DATE 11.4.96

ROUTE 19

R.C. HAINES

WEATHER _____

COUNTY OTTAWA

CORDES

TEMP. _____

TOWNSHIP SALEM OAK HARBOR

SECTION 4

T6 N R 15 E

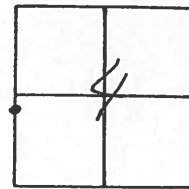
TYPE MONUMENT PIK + WASHERS EAST & WEST

ON SURFACE - ~~BELOW~~ ON SURFACE

LEFT- & PAV'T. - RIGHT PIK ON & SR 163, 163+19

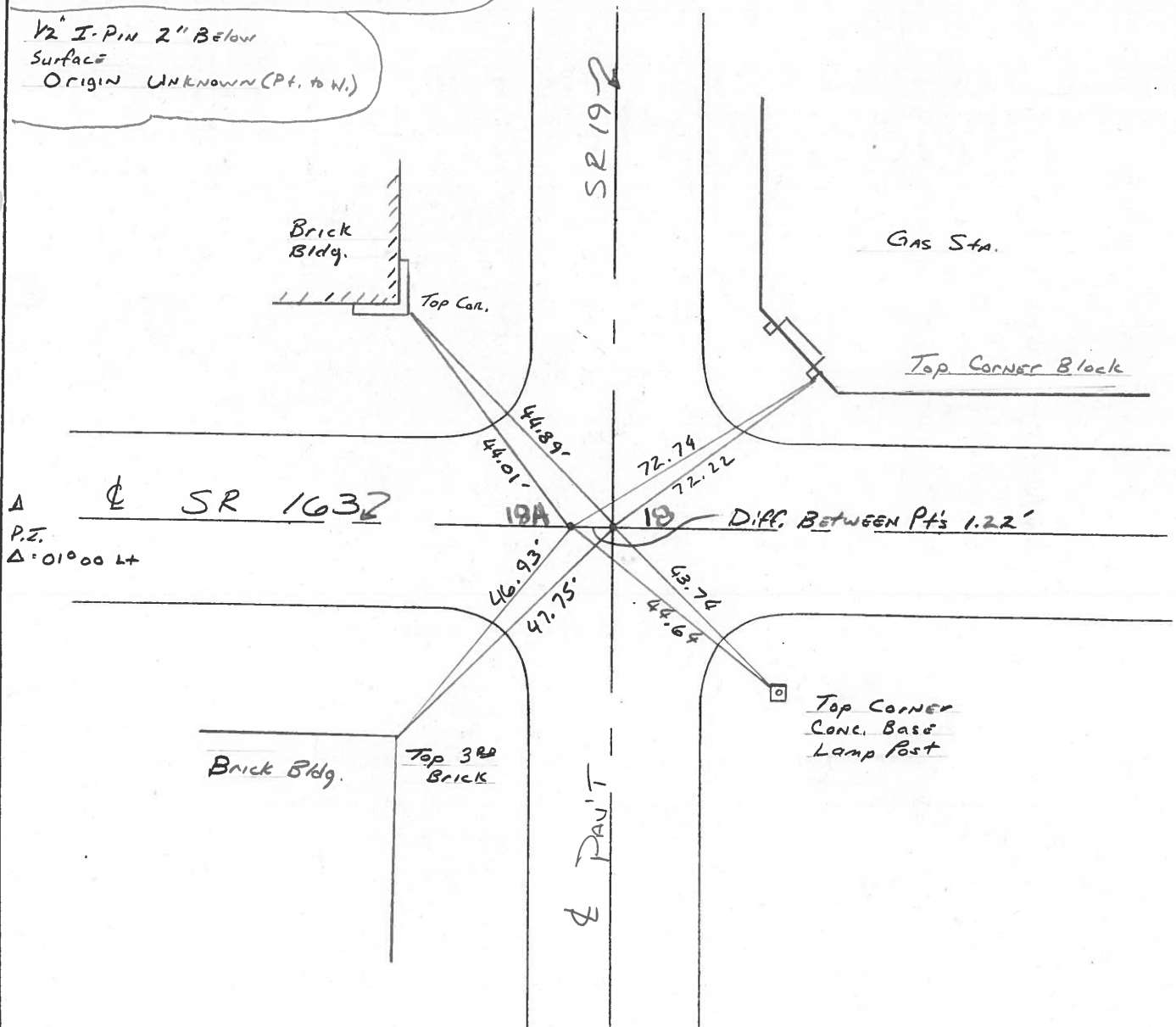
-TO- EDGE PAVEMENT

S.L.M. 182+06 (180+35.98=1951 Plans)



RESET P.K/WASHERS 11/4/96 M.R.C.)

1/2" I-PIN 2" Below Surface
Origin UNKNOWN (Pt. to W.)



O.D.O.T. DISTRICT 2 SURVEY OFFICE

PERSONNEL

REFERENCE NO. 18, 18A SHEET 18 OF

NOTES CRONIN

H.C. RIPPLE

R.C. GEYMAN

DATE 4/20/89

WEATHER SUNNY

TEMP. 520

ROUTE #19

COUNTY OTTAWA

TOWNSHIP SALEM OAK HARBOR

SECTION 4

T 6 N R 15 E

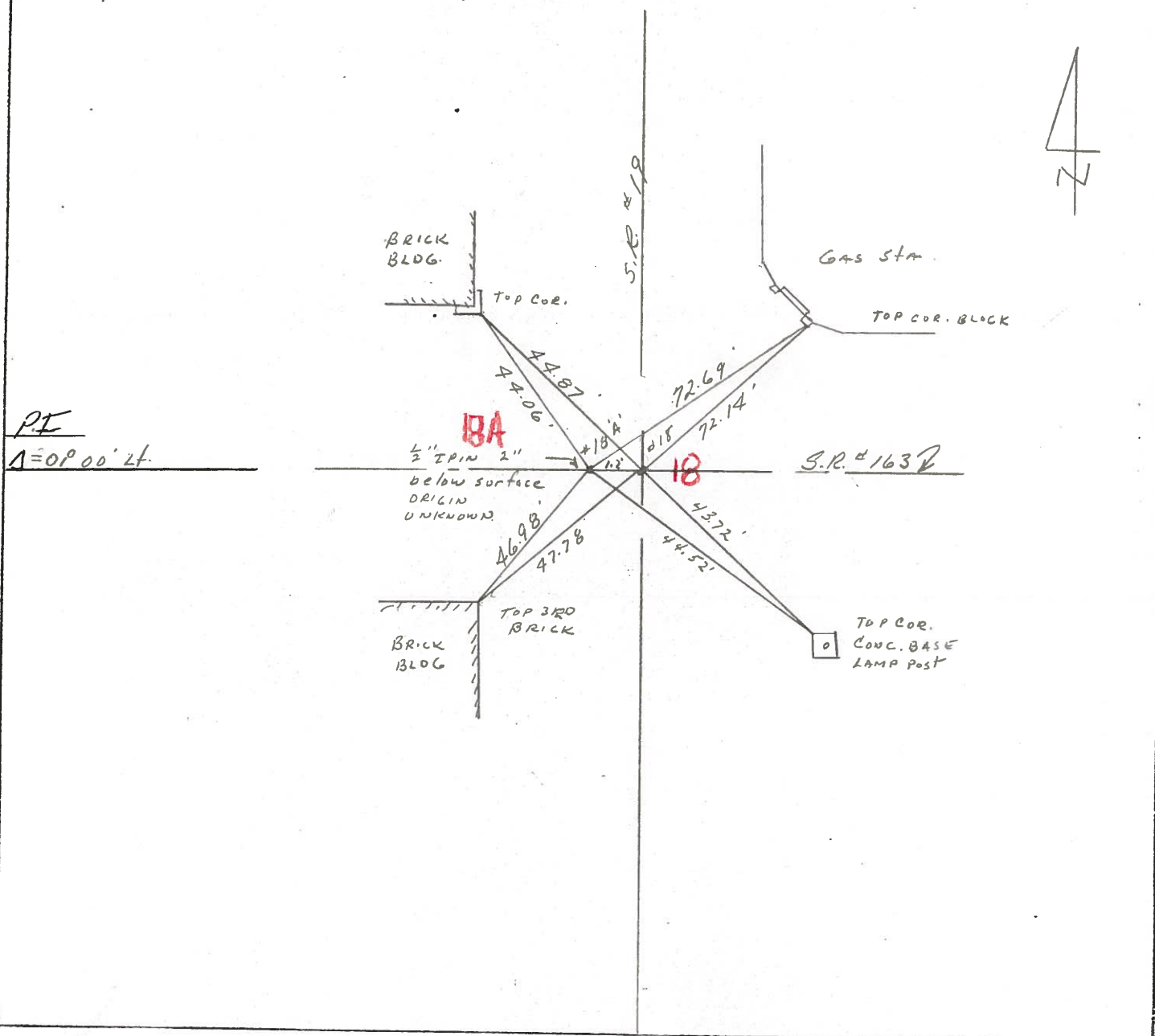
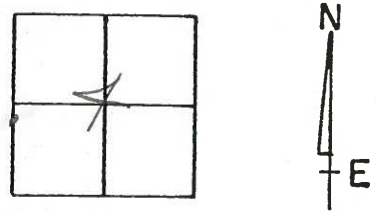
TYPE MONUMENT 5/8" IRON

ON SURFACE - BELOW 1"

LEFT - ☐ PAV'T. - RIGHT

TO EDGE PAVEMENT

S.L.M. 180+3598 (1951 Plans)



County OTTAWA S.R. 19

Date 7-27-81

Township SALEM

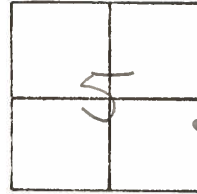
Weather cloudy

Section 5

Temp. +70°

T&N, RISE

Personnel HOFFMAN



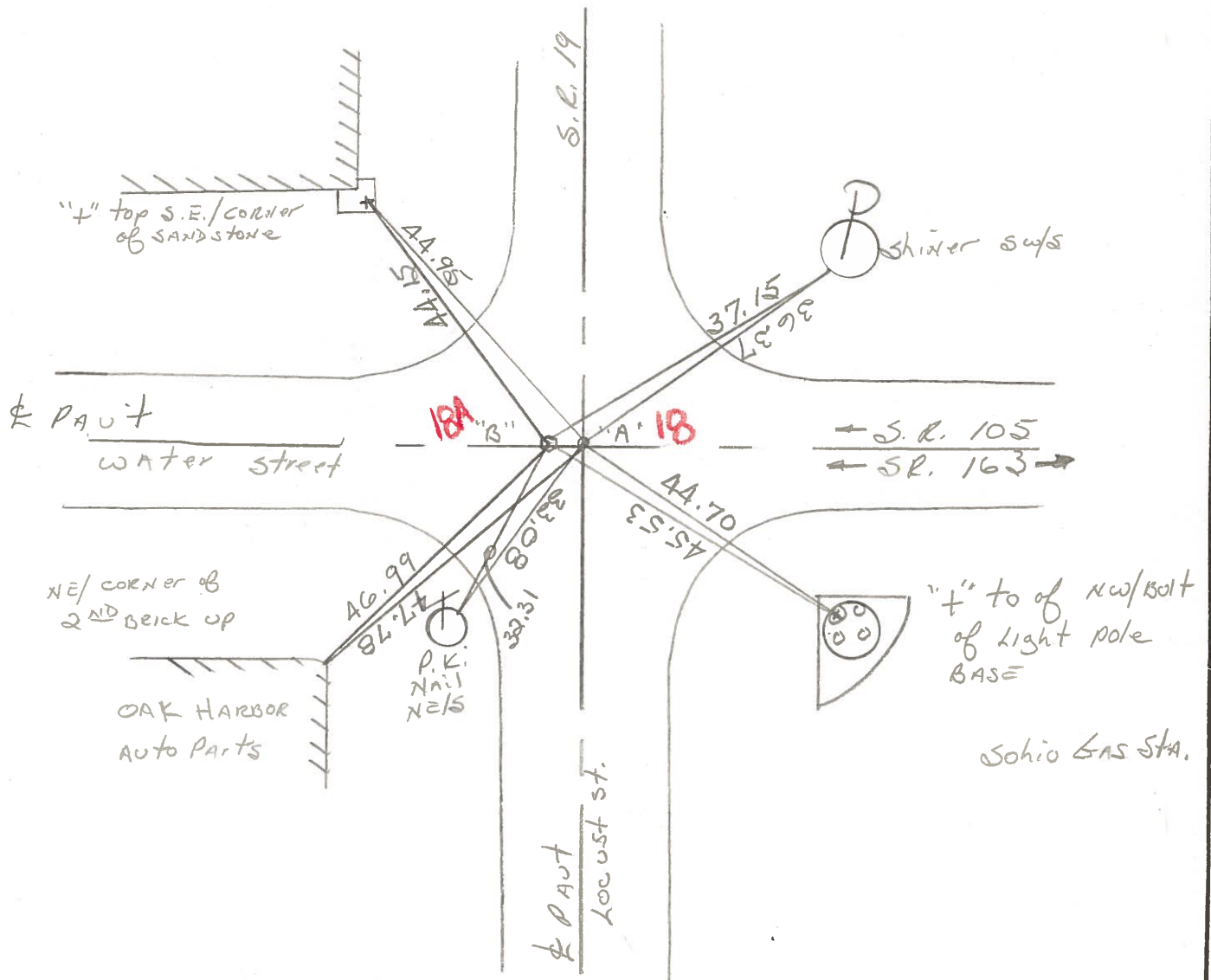
Householder

Loehrke

#18

Pt. "A" Fd. 1" IRON Rod 2" below surface. 1971 Notes call for a 2" pipe, 6" down

Pt. "B" Fd R.R. SPK 1" below surface.



PERSONNEL TITLE PERSONNEL TITLE

COUNTY Ottawa

DATE 4-25-78

S. R. 519

WEATHER Fair - windy

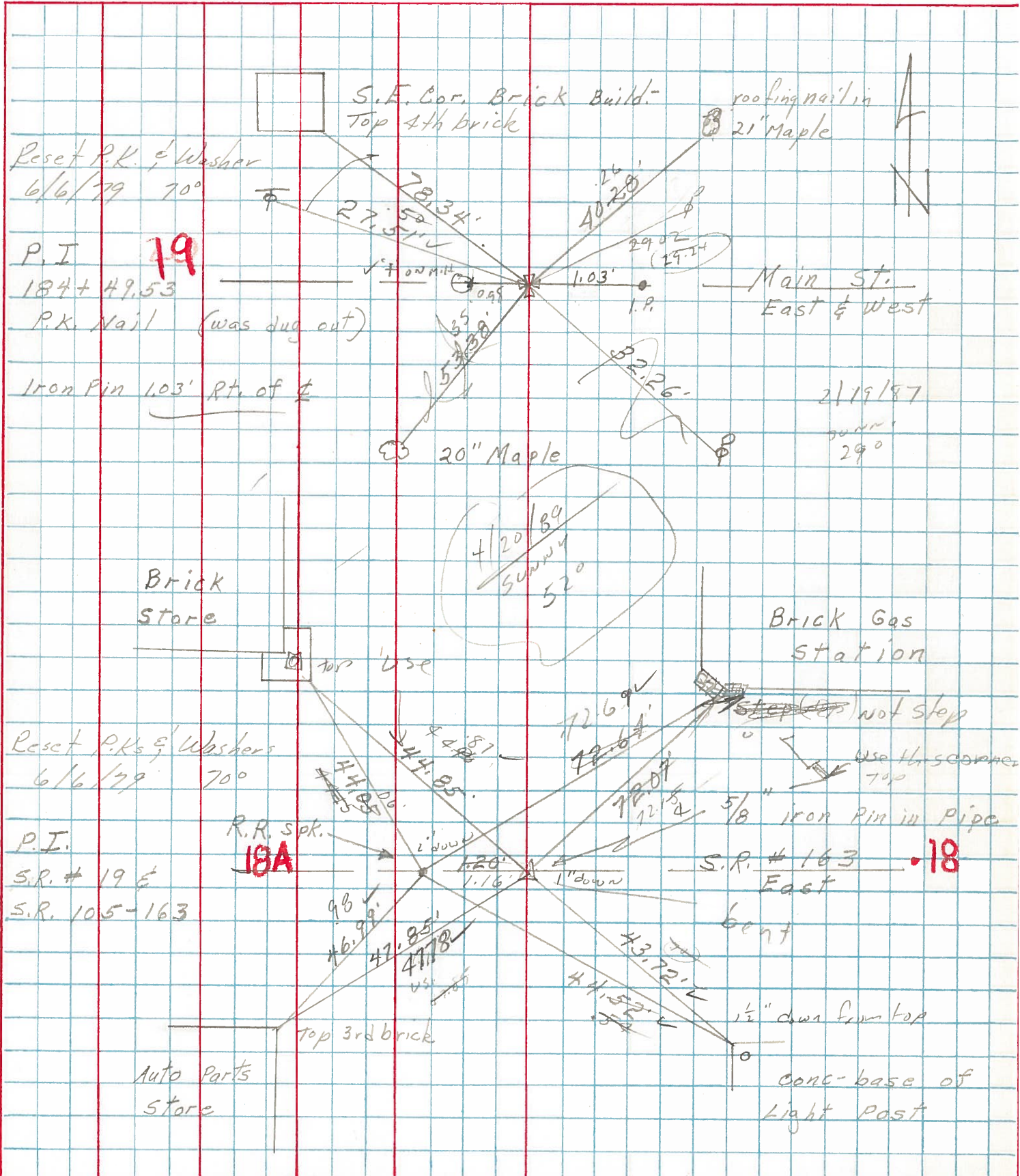
SEC. 554

TEMP. 45°

DESCRIPTION Oak Harbor

JOB NO.

LEFT CENTER LINE RIGHT



PERSONNEL TITLE PERSONNEL TITLE

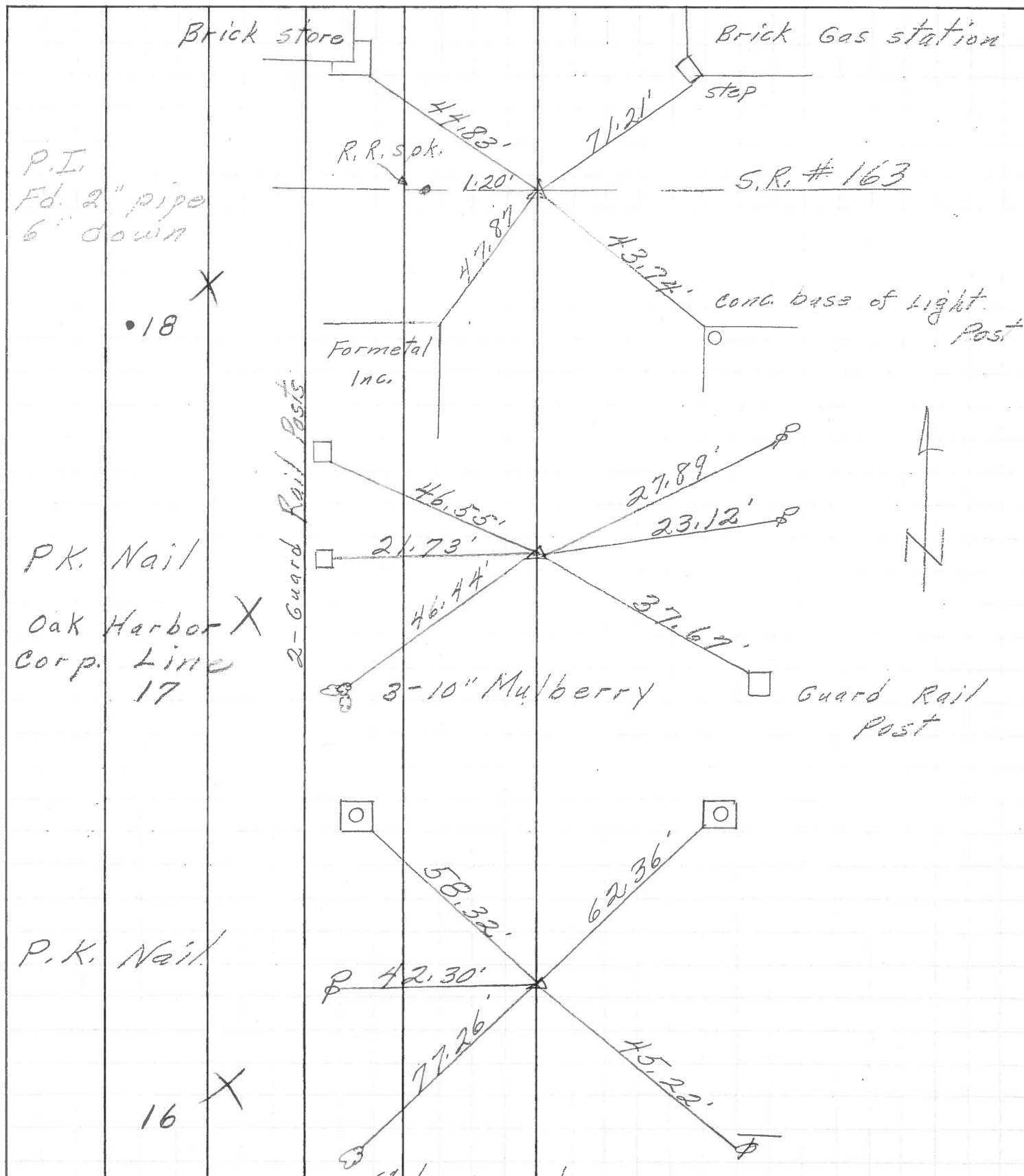
COUNTY Ottawa DATE 5-4-71

S. R. 19 WEATHER _____

SEC. 5 & 4 TEMP. _____

DESCRIPTION Oak Harbor & 1 point south JOB NO. _____

LEFT CENTER LINE RIGHT

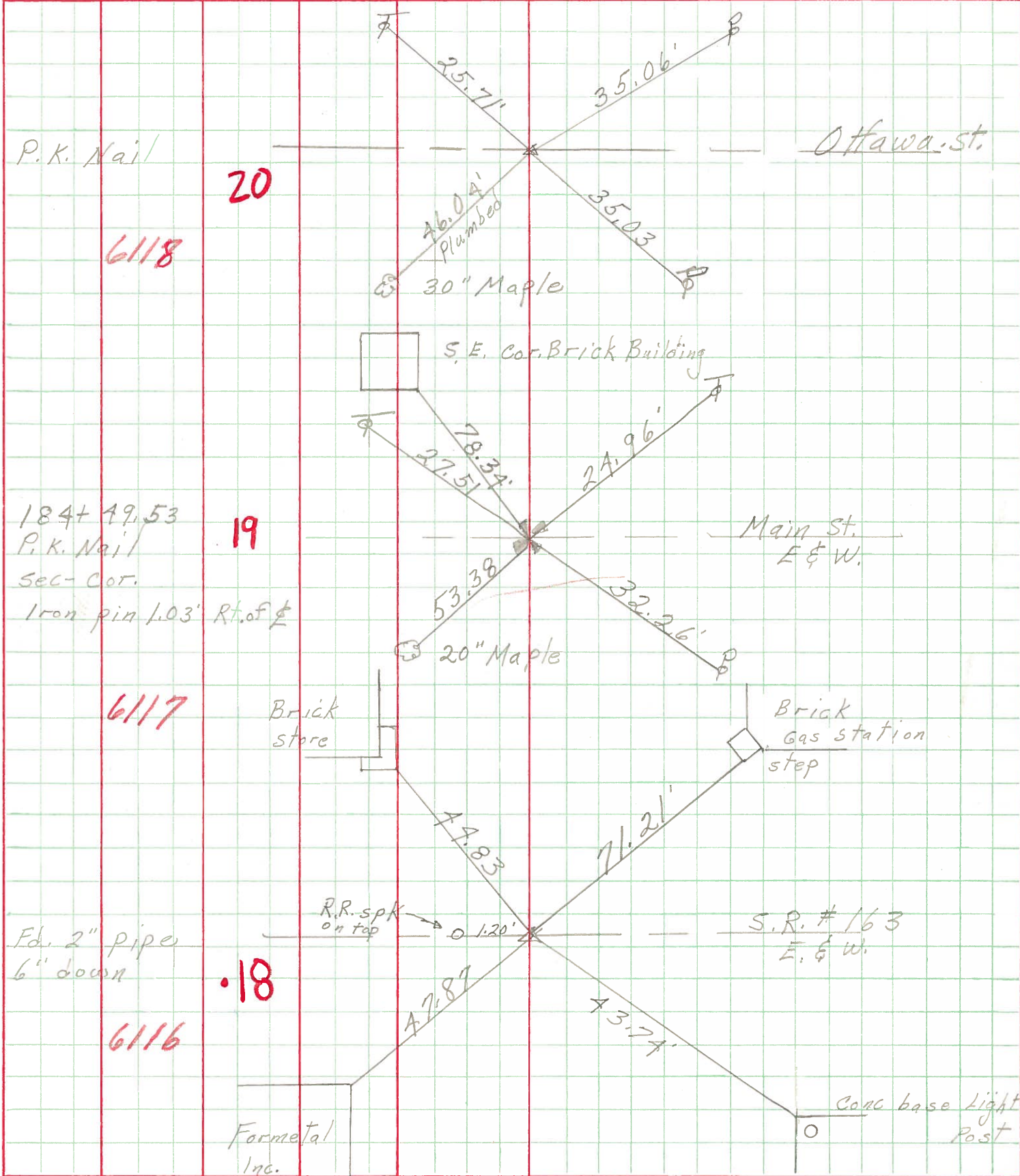


PERSONNEL TITLE PERSONNEL TITLE
 Schneider _____
 Mosser _____
 Barbour _____
 Redding _____

COUNTY Ottawa DATE 5-13-68
 S. R. 19 WEATHER Fair
 SEC. Oak Harbor TEMP. 65°

DESCRIPTION Ties for Control Points JOB NO. _____

LEFT CENTER LINE RIGHT



PERSONNEL	TITLE	PERSONNEL	TITLE
Schneider		Schultz	
Moser			
Konolacki			
Zabur			

COUNTY _____ DATE 3-13-63
 S. R. 12 WEATHER Cloudy - Rain
 SEC. Sandusky Co. 10 - North TEMP. 35°

DESCRIPTION TICS for Control Points JOB NO. _____

