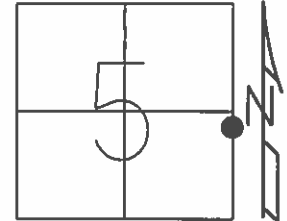


O.D.O.T. DISTRICT 2 SURVEY OFFICE (USE ONLY)

PERSONNEL _____ REFERENCE NO. 18 A SHEET 23 OF 23

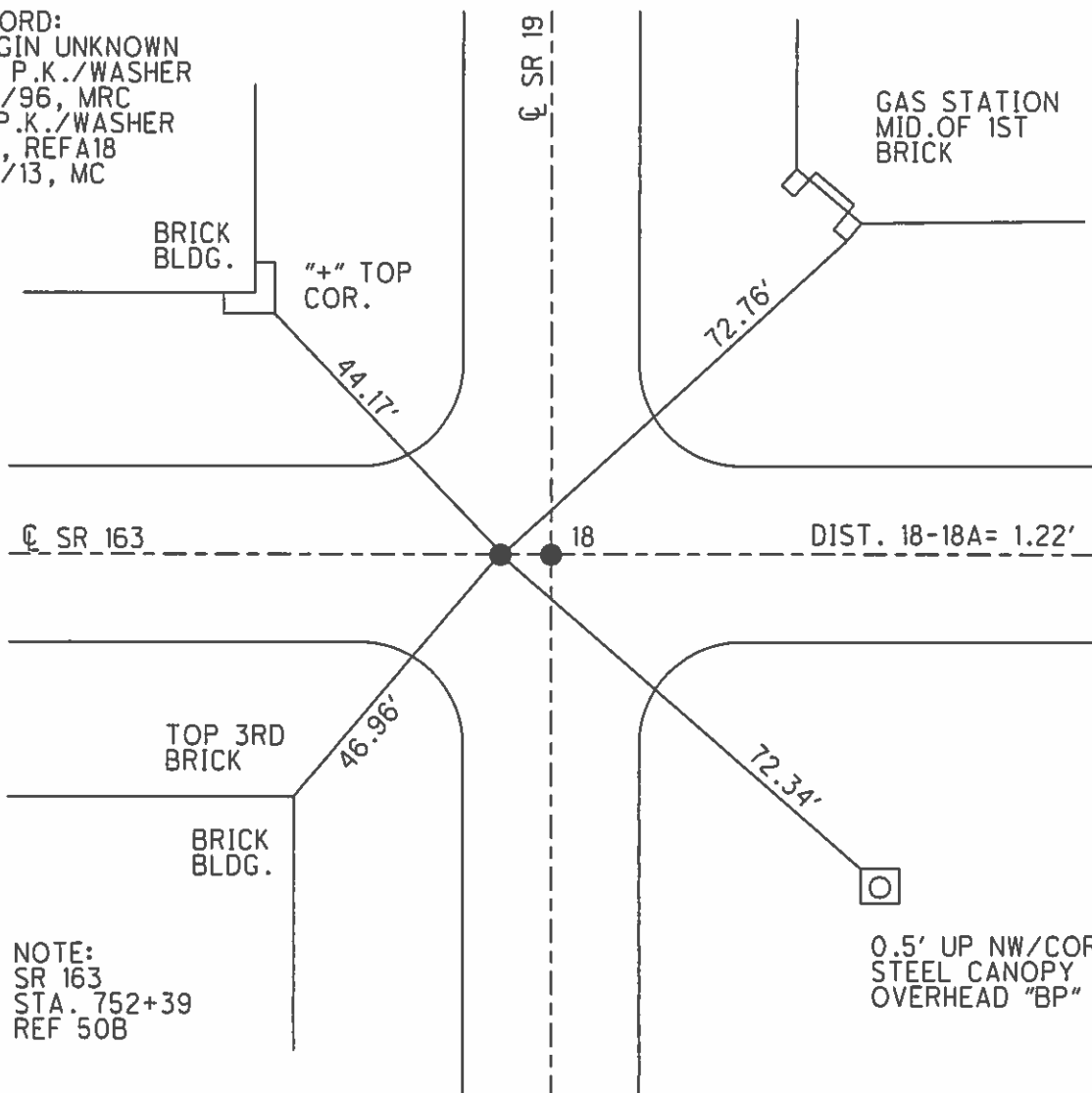
NOTES NUHFER DATE 1/9/06 ROUTE SR 19
 H.C. CANTERBURY WEATHER CLOUDY COUNTY OTTAWA
 R.C. BARNHESEL TEMP. 32° TOWNSHIP SALEM
 _____ SECTION 5
 _____ T 6 N R 15 E

TYPE MONUMENT P.K./WASHER
 ON SURFACE - ~~BELOW~~ ON _____
 LEFT - ℄ PAV'T - ~~RIGHT~~ 1.22'
 _____ TO _____ EDGE PAVEMENT
 S.L.M. 181+92.63



GRID: NORTHING: 671376.472 EASTING: 1791828.481

RECORD:
 ORIGIN UNKNOWN
 SET P.K./WASHER
 11/4/96, MRC
 FD P.K./WASHER
 GPS, REFA18
 1/15/13, MC

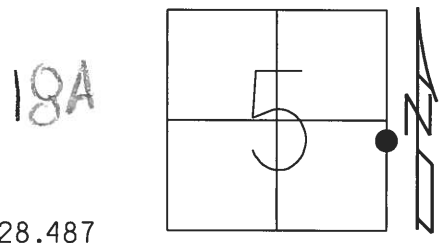


NOTE:
 SR 163
 STA. 752+39
 REF 50B

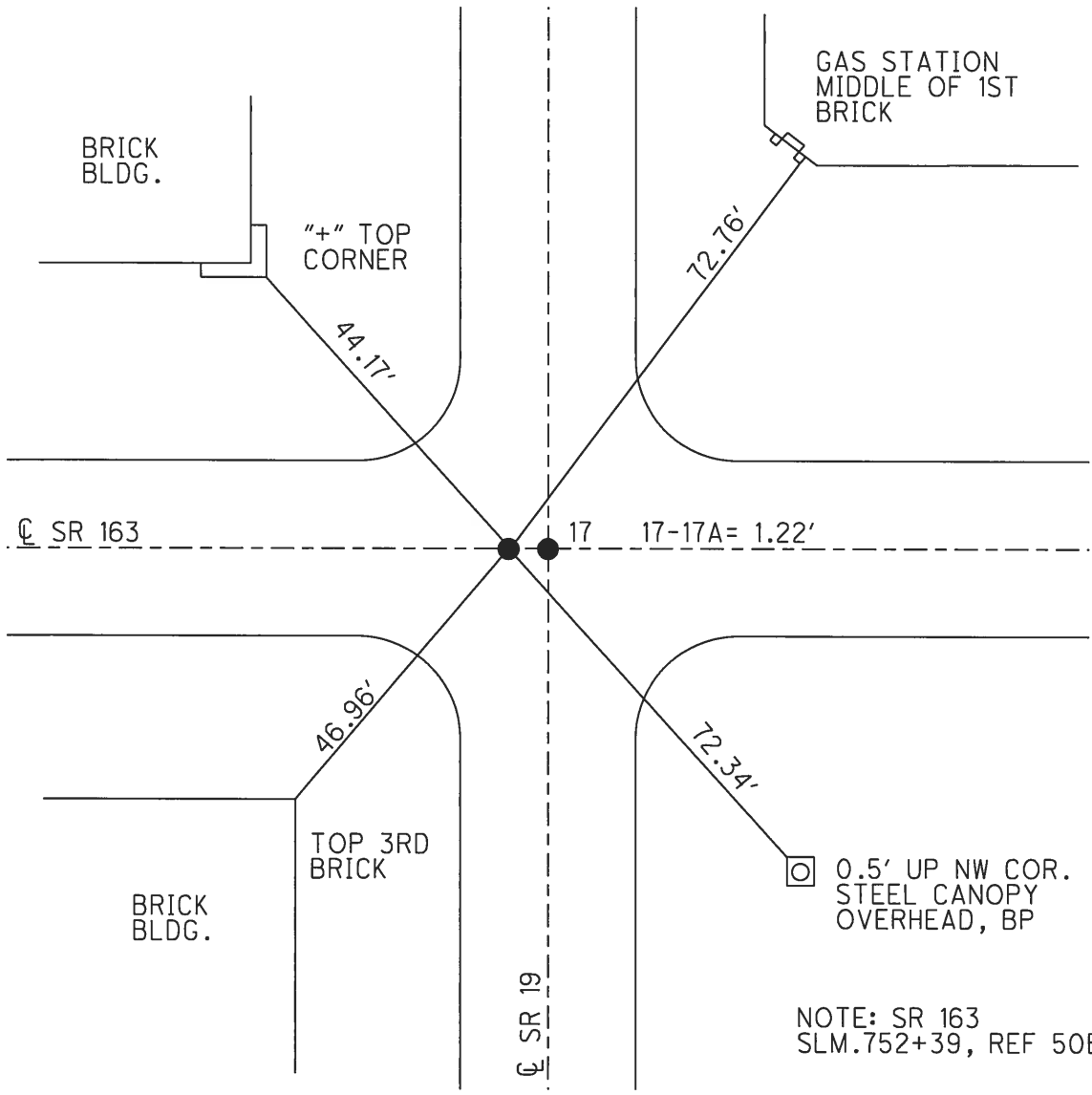
O.D.O.T. DISTRICT 2 SURVEY OFFICE (USE ONLY)

PERSONNEL _____ REFERENCE NO. 17 A SHEET 4 OF 33
 NOTES NUHFER DATE 1/9/06 ROUTE SR 19
 H.C. CANTERBURY WEATHER CLOUDY COUNTY OTTAWA
 R.C. BARNHEISEL TEMP. 32° TOWNSHIP SALEM
 _____ SECTION 5
 _____ T 6 N R 15 E

TYPE MONUMENT P.K./WASHER
 ON SURFACE - ~~BELOW~~ ON _____
~~LEFT~~ - ☉ PAV'T - RIGHT 1.22'
 - TO - EDGE PAVEMENT
 S.L.M. 182+16



Grid: Northing: 671376.491 Easting: 1791828.487



O.D.O.T. DISTRICT 2 SURVEY OFFICE

PERSONNEL

REFERENCE NO. 18#18A

SHEET 17 OF 22

NOTES BARNHISEL

H.C. ROUSOS

DATE 11-4-96

ROUTE 19

R.C. HAINES

WEATHER _____

COUNTY OTTAWIA

CORDES

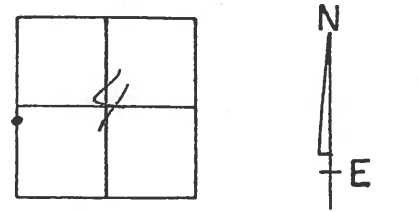
TEMP. _____

TOWNSHIP SALEM OAK HARBOR

SECTION 4

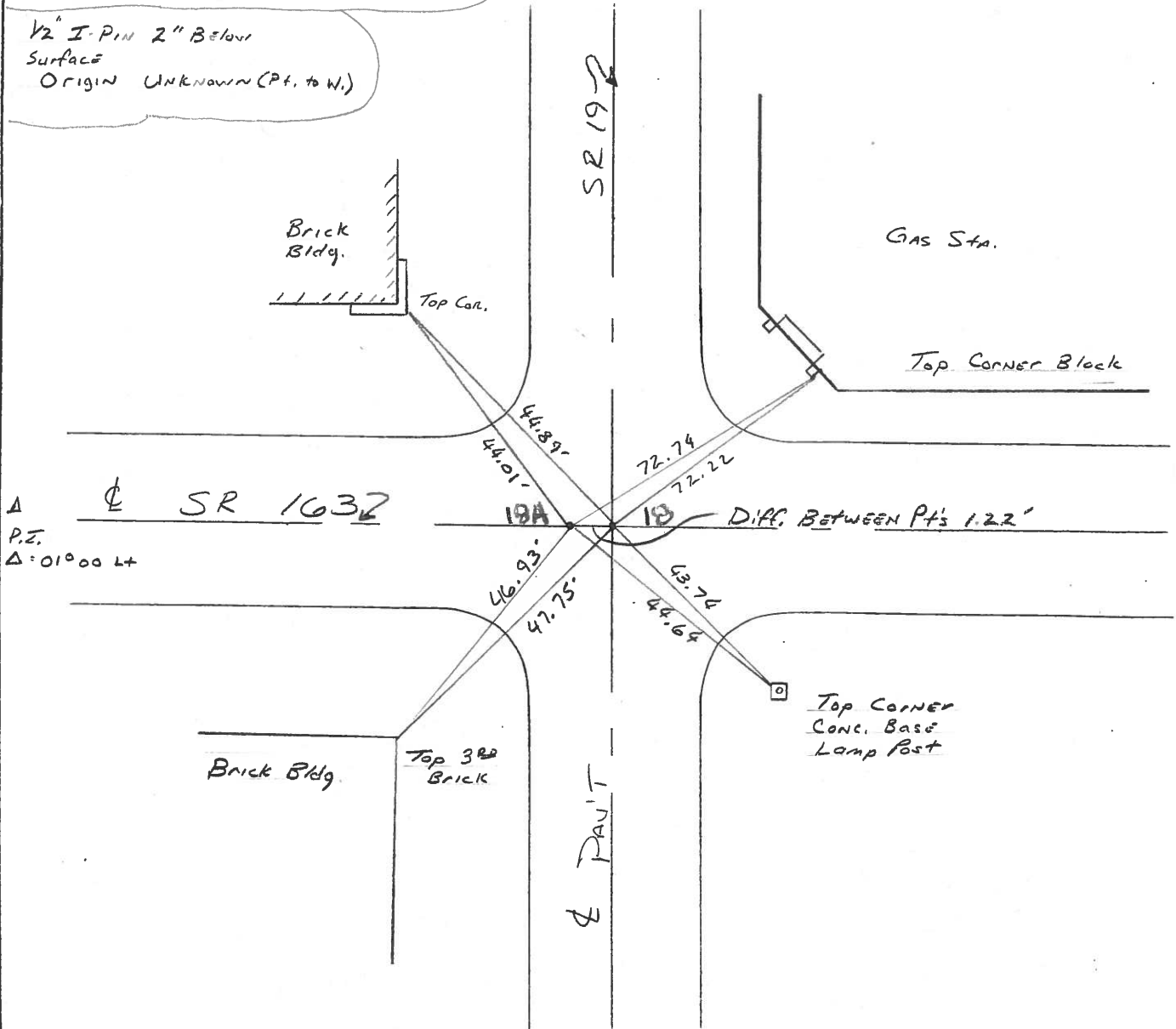
T6 N R 15 E

TYPE MONUMENT PK+WASHERS EAST & WEST
 ON SURFACE - BELOW ON SURFACE
 LEFT- & PAVT. - RIGHT PK ON & SR 163, 163+19
 -TO- EDGE PAVEMENT
 S.L.M. 182+06 (180+35.98=1951 Plans)



RESET P.K./WASHERS 11/4/96 M.R.C.

1/2" I-PIN 2" Below
 Surface
 ORIGIN UNKNOWN (Pt. to W.)



Δ
 P.Z.
 Δ: 01°00' Lt

O.D.O.T. DISTRICT 2 SURVEY OFFICE

PERSONNEL

REFERENCE NO. 18 E 18A SHEET 18 OF

NOTES CRONIN

H.C. RIFFLE

R.C. GEYMAN

DATE 4/20/89

WEATHER SUNNY

TEMP. 52°

ROUTE #19

COUNTY OTTAWA

TOWNSHIP SALMON HARBOR

SECTION 4

T 6 N R 15 E

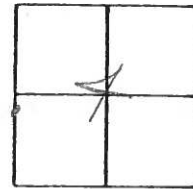
TYPE MONUMENT 5/8" IRON

ON SURFACE - BELOW 1"

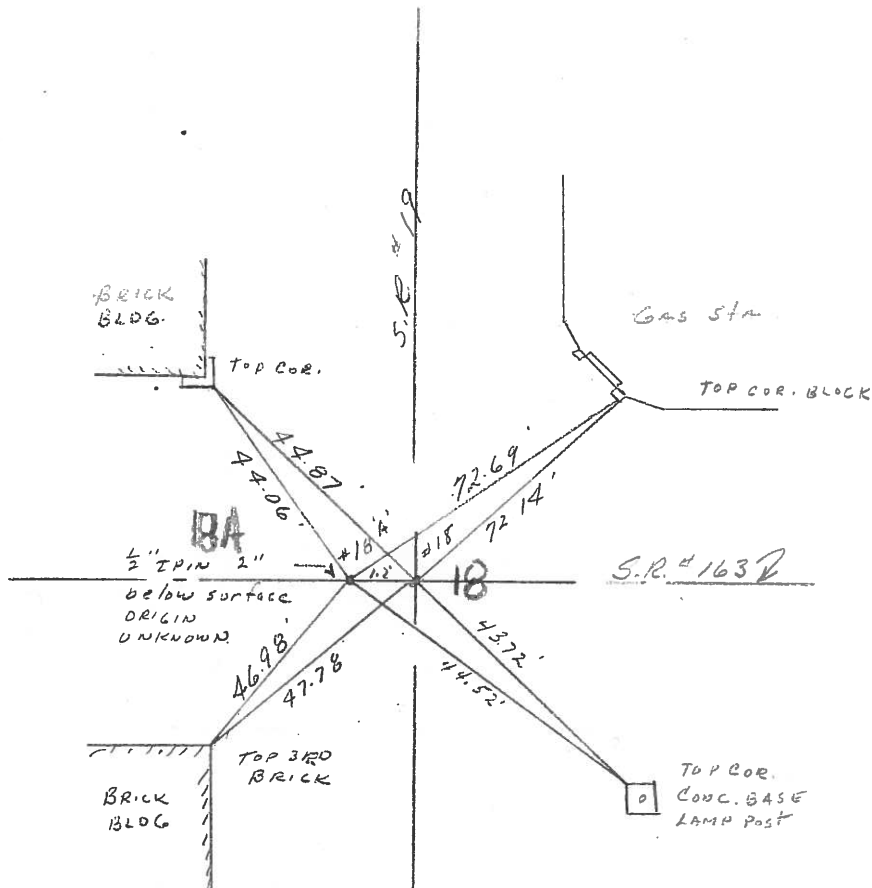
LEFT - PAV'T. - RIGHT

TO EDGE PAVEMENT

S.L.M. 180+3598 (1951 PINS)



P.I.
A=0°00'4"



County OTTAWA S.R. 19

Township SALEM

Section 5

T&N, RISE

Personnel HOFFMAN

Householder

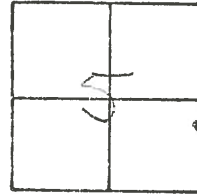
Loehrke

#18

Date 7-27-81

Weather cloudy

Temp. +70°



Pt. "A" Fd. 1" Iron Rod 2" below surface. 1971 Notes call for A 2" pipe, 6" down

Pt. "B" Fd R.R. SPK 1" below surface.

