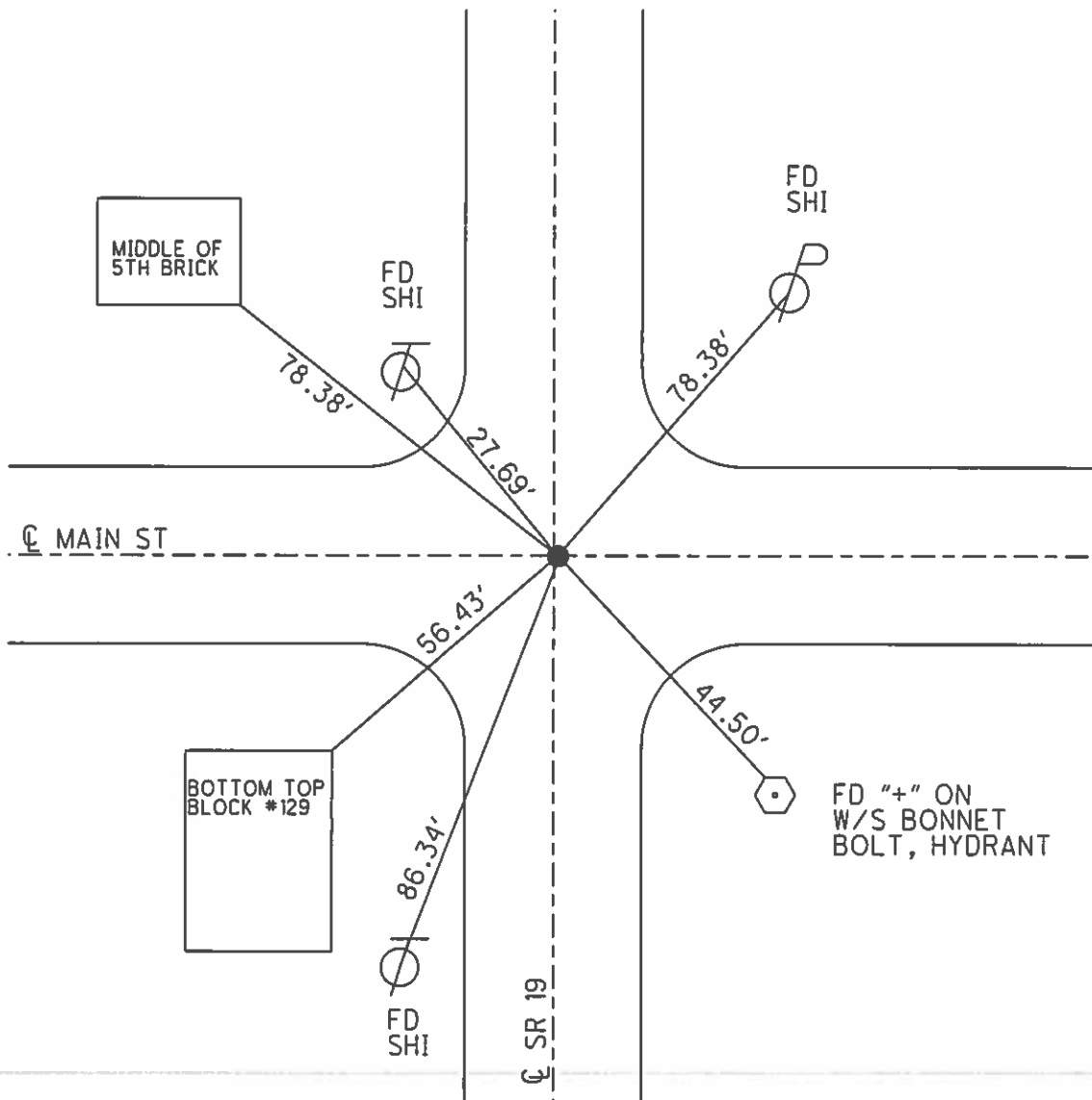
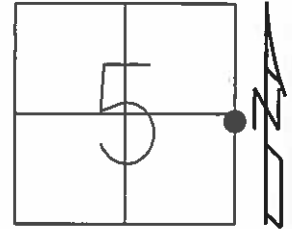


O.D.O.T. DISTRICT 2 SURVEY OFFICE (USE ONLY)

PERSONNEL	REFERENCE NO.	19	SHEET	5	OF	33
NOTES	DATE	3/15/07	ROUTE	SR	19	
H.C.	WEATHER	FAIR	COUNTY	OTTAWA		
R.C.	TEMP.	55°	TOWNSHIP	SALEM		
			SECTION	5		
			T	6	N	R 15 E

TYPE MONUMENT P.K./WASHER
 ON SURFACE - ~~BELOW~~ ON
~~LEFT~~ - ☉ PAV'T - RIGHT 0.8'
- TO - EDGE PAVEMENT
 S.L.M. 186+29.74
 Grid: Northing: 671790.057 Easting: 1791833.435



O.D.O.T. DISTRICT 2 SURVEY OFFICE

PERSONNEL _____

REFERENCE NO. 19

SHEET 18 OF 22

NOTES BARNHISEL

H.C. ROUSOS

DATE 8-5-96

ROUTE 19

R.C. HANES

WEATHER SUNNY

COUNTY OTTAWA

TEMP. +85°F

TOWNSHIP SALEM

SECTION 5

T. 6 N. R. 15 E.

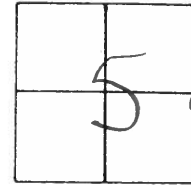
TYPE MONUMENT PK + WASHER

ON SURFACE - ~~NO~~ YES

~~LEFT~~ - & PAV'T. - ~~RIGHT~~ YES

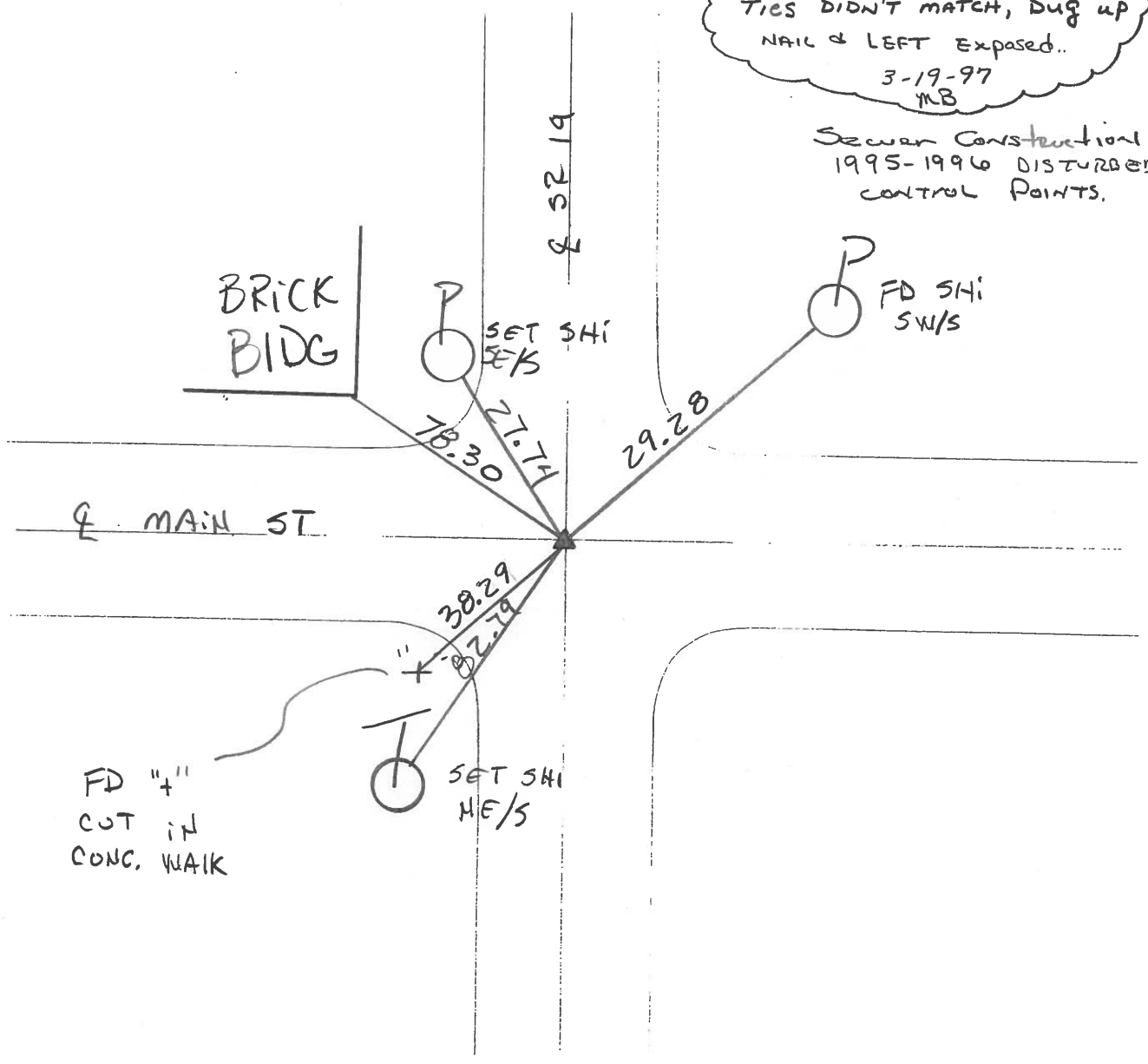
TO - EDGE PAVEMENT ON & E/W

S.L.M. 186 + 23



TIES DIDN'T MATCH, DUG UP NAIL & LEFT EXPOSED..
3-19-97
MB

Sewer Construction
1995-1996 DISTURBED
CONTROL POINTS.



O.D.O.T. DISTRICT 2 SURVEY OFFICE

PERSONNEL _____

REFERENCE NO. 19

SHEET 19 OF _____

NOTES CRONIN

H.C. RIPPLE

R.C. GEYMAN

DATE 4/20/89

WEATHER SUNNY

TEMP. 54°

ROUTE # 19

COUNTY OTTAWA

TOWNSHIP SALEM HARBOR OAK

SECTION 4

T 6 N R 15 E

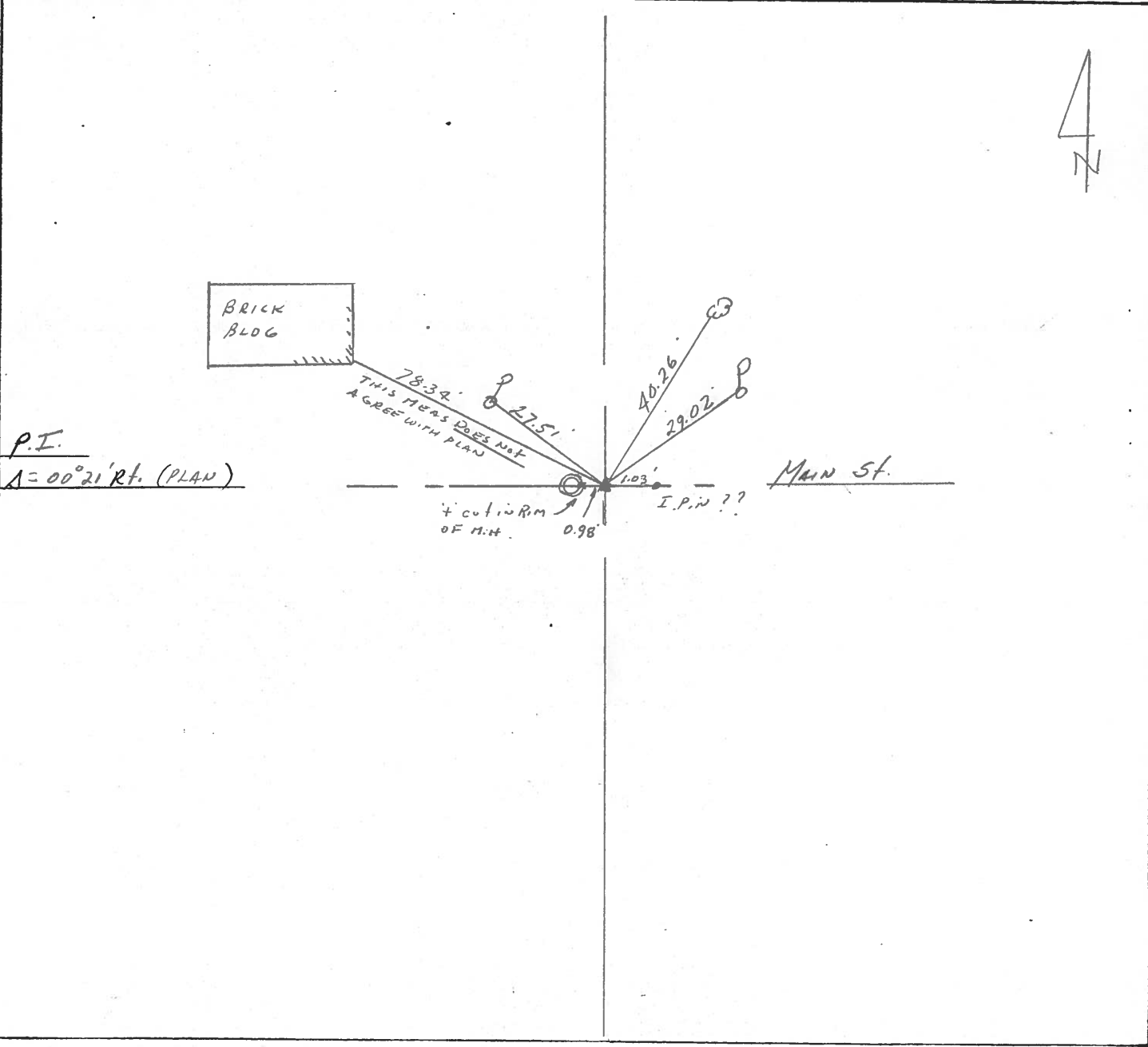
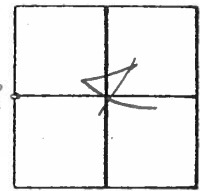
TYPE MONUMENT P.K. WASHER

ON SURFACE - BELOW _____

LEFT - ☉ PAV'T. - RIGHT _____

TO _____ EDGE PAVEMENT

S.L.M. 184+49.53 (1951 PLANS)



PERSONNEL TITLE PERSONNEL TITLE

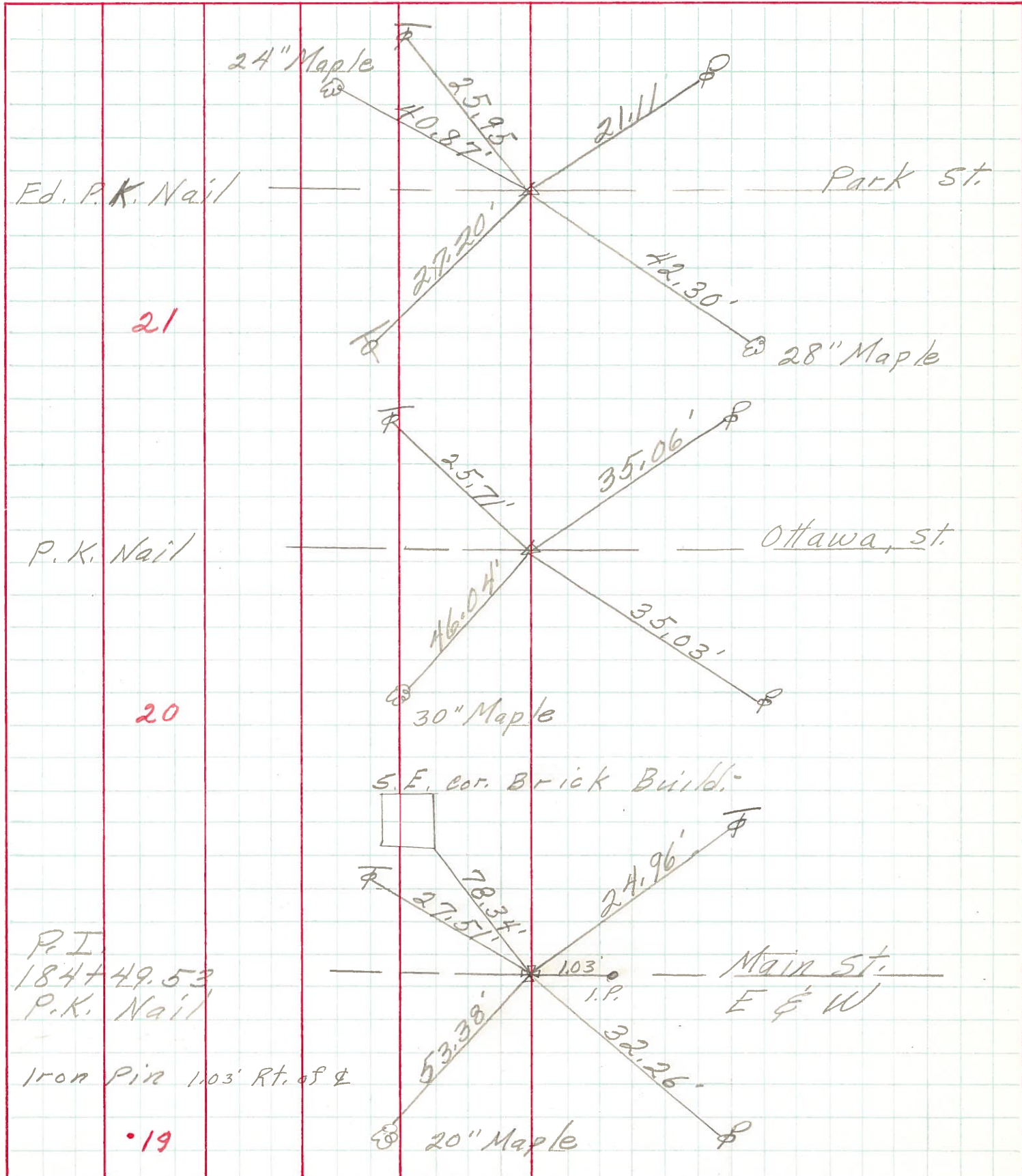
COUNTY Ottawa DATE 5-4-71

S. R. 19 WEATHER

SEC. 5 & 4 TEMP.

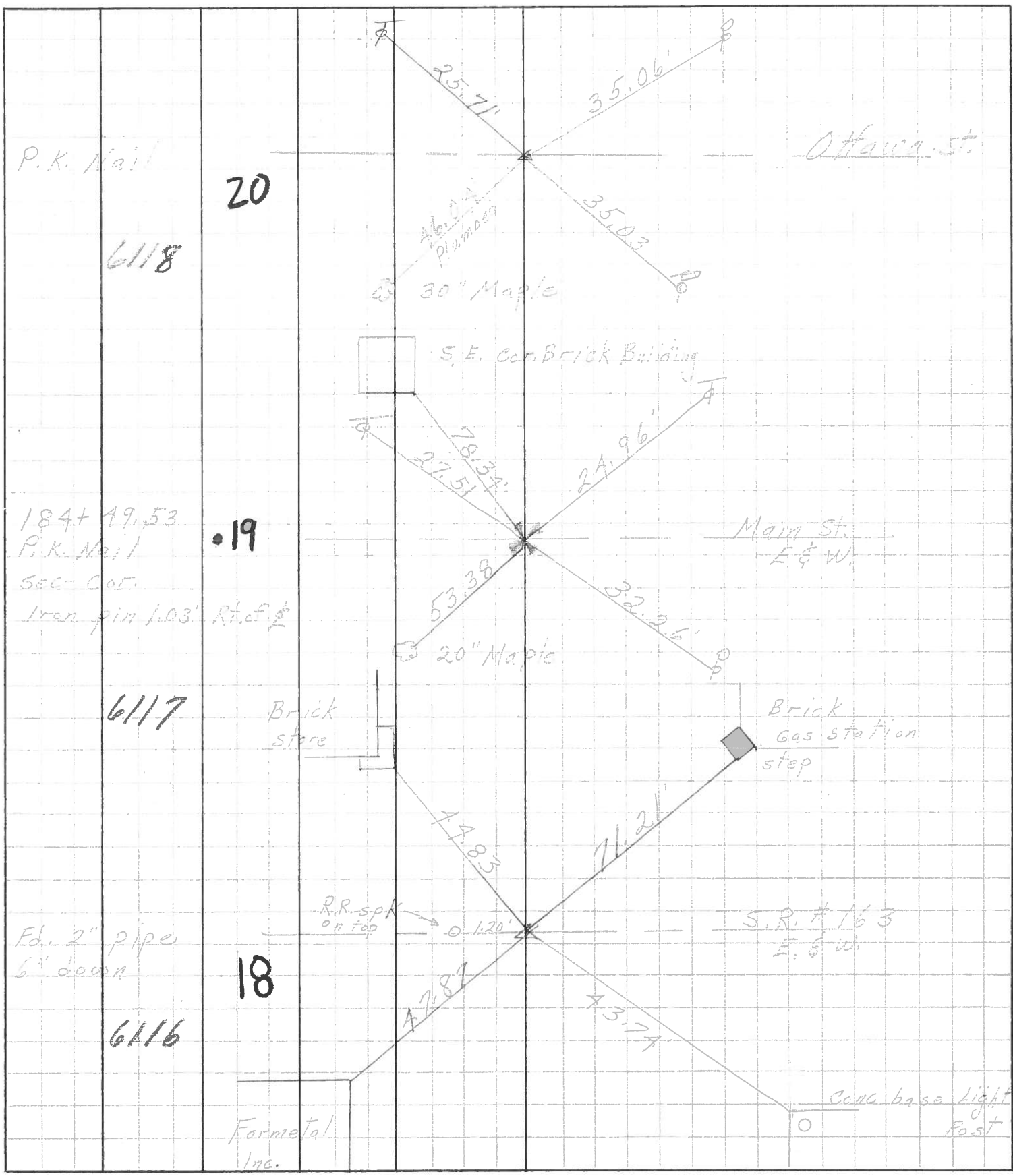
DESCRIPTION Oak Harbor JOB NO.

LEFT CENTER LINE RIGHT



PERSONNEL	TITLE	PERSONNEL	TITLE	COUNTY	DATE	WEATHER	TEMP.
Schneider				Ottawa	5-13-68	Fair	65°
Mosser				S. R. 19			
Barbour				SEC. Oak Harbor			
Redding							

DESCRIPTION Ties for Control Points JOB NO. _____



PERSONNEL	TITLE	PERSONNEL	TITLE
Schwider		Schwartz	
Messer			
Schubert			
Zabr			

COUNTY _____ DATE 2-13-23
 S. R. _____ WEATHER Cloudy - Rain
 SEC. Embushka 2.2 to North TEMP. 35°

DESCRIPTION Ties for Control Points JOB NO. _____

