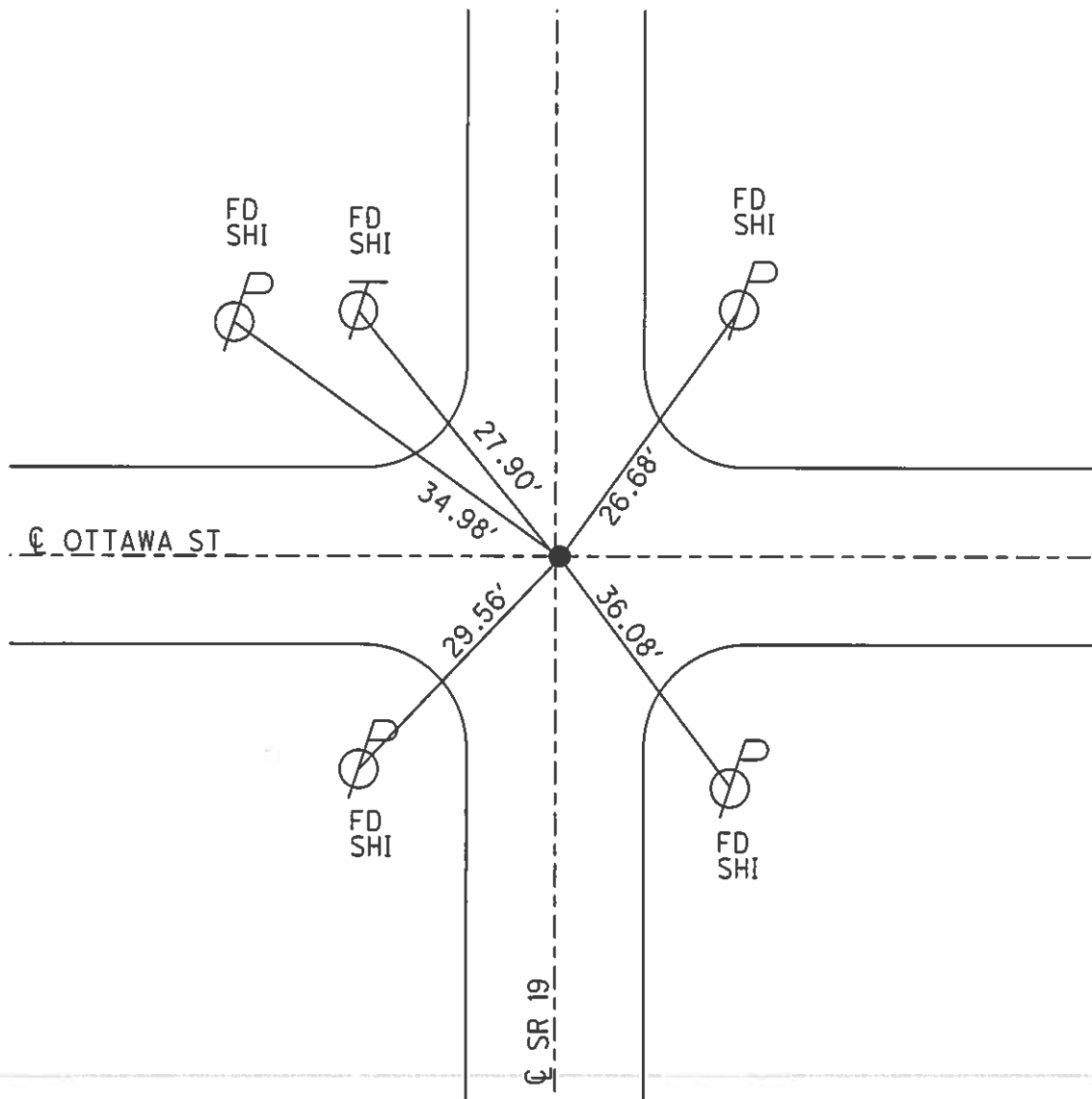
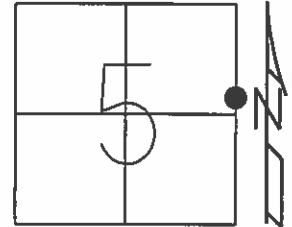


O.D.O.T. DISTRICT 2 SURVEY OFFICE (USE ONLY)

PERSONNEL _____ REFERENCE NO. 20 SHEET 6 OF 33
 NOTES HUSS DATE 3/15/07 ROUTE SR 19
 H.C. CANTERBURY WEATHER FAIR COUNTY OTTAWA
 R.C. HUSS TEMP. 55° TOWNSHIP SALEM
 _____ SECTION 5
 _____ T 6 N R 15 E

TYPE MONUMENT P.K./WASHER
 ON SURFACE - ~~BELOW~~ ON
~~LEFT~~ - Q PAV'T - RIGHT 0.6'
13.4' TO LT EDGE PAVEMENT
 S.L.M. 190+41.92

Grid: Northing: 672202.116 Easting: 1791837.639



O.D.O.T. DISTRICT 2 SURVEY OFFICE

PERSONNEL

REFERENCE NO. 20

SHEET 20 OF 22

NOTES BARNHISEL

H.C. ROUSOS

DATE 8-5-96

ROUTE 19

R.C. HANES

WEATHER SUNNY

COUNTY OTTAWA

CORDES M

TEMP. +85°

TOWNSHIP SALEM

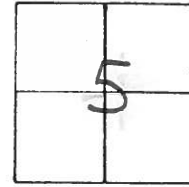
SECTION 5

T 6 N R 15 E

TYPE MONUMENT Sewer Line Removed
ON SURFACE - BELOW ☉ CONTROL

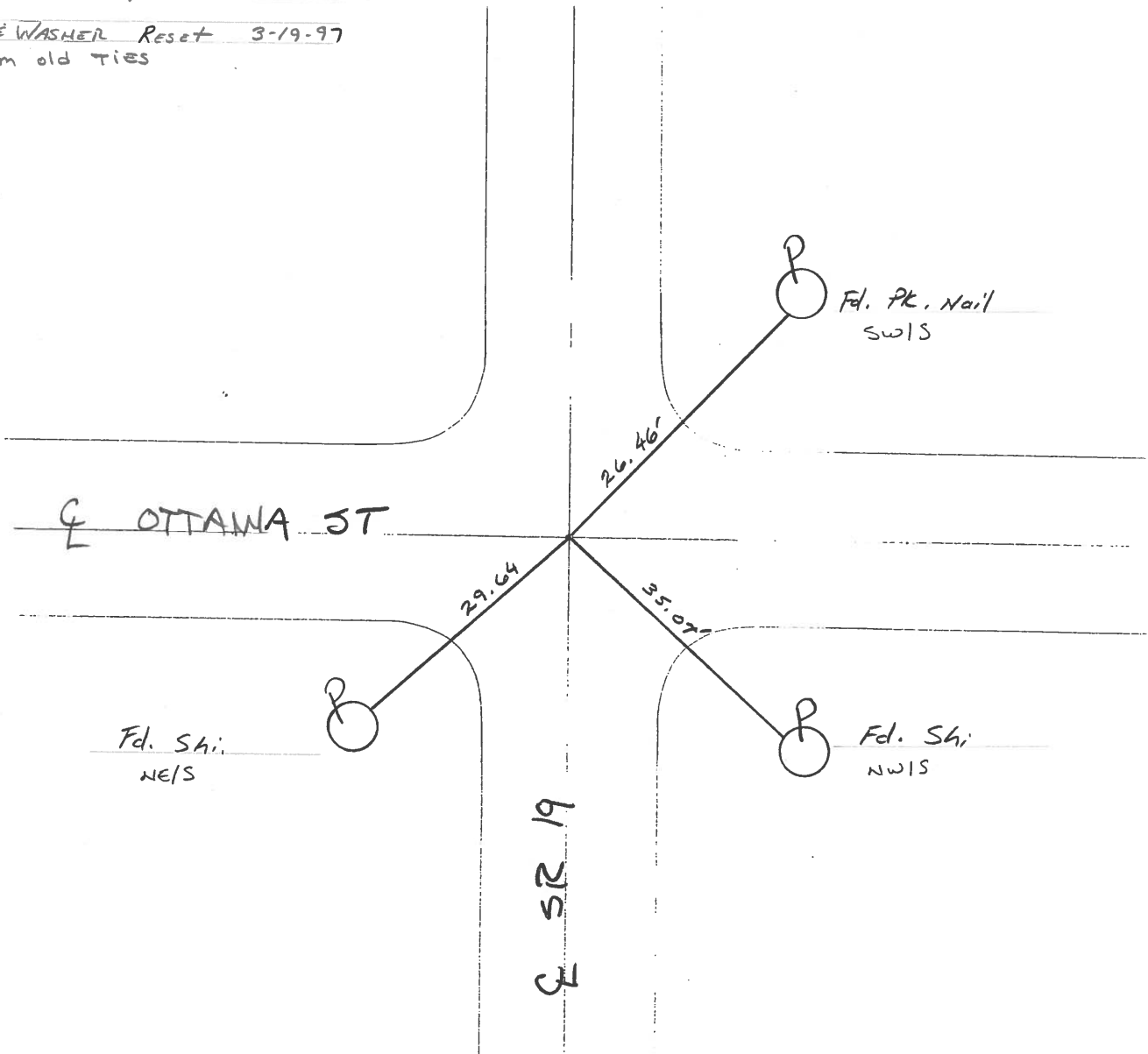
~~LEFT - ☉ PAV'T. - RIGHT~~ ON ☉ Pmt. West on Ottawa st;
13.4' TO LT EDGE PAVEMENT 0.6' R+ & SR 19

S.L.M. 190+34



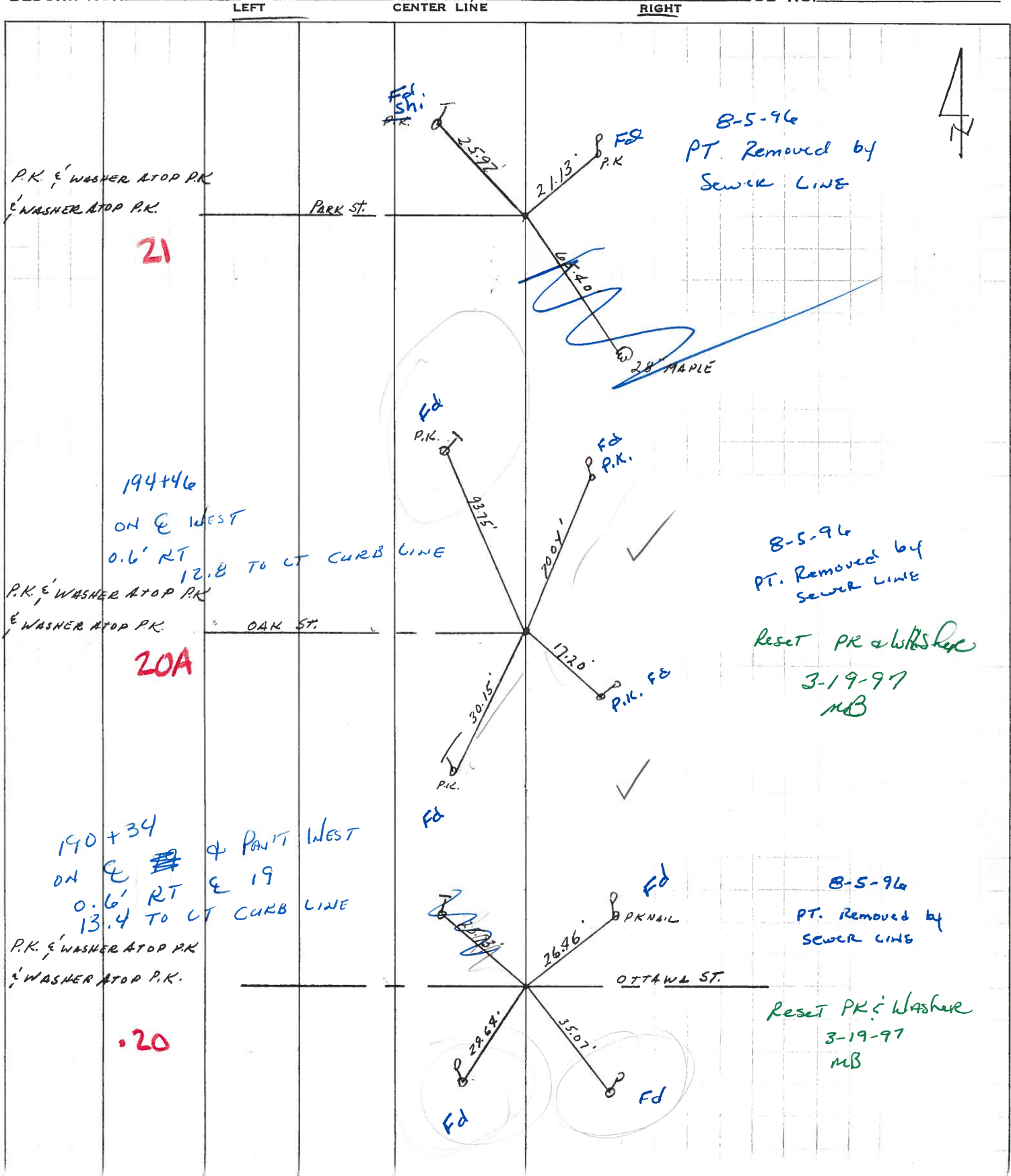
PT. REMOVED by SEWER LINE 8-5-96

PK. & WASHER Reset 3-19-97
from old TIES



PERSONNEL	TITLE	PERSONNEL	TITLE	COUNTY	DATE
Cronin				OTTAWA	4/20/89
Ripple				S. R. #19	WEATHER SUNNY
Geyman				SEC. OAK HARBOR	TEMP. 63°

DESCRIPTION TIES - INTERSECTING STREETS - SET BY OTHERS JOB NO. _____



PERSONNEL TITLE PERSONNEL TITLE

CRONIN
RIPPLE
GEYMAN

COUNTY OTTAWA

DATE 4/20/89

S. R. #19

WEATHER SUNNY

SEC. OAK HARBOR

TEMP. 63°

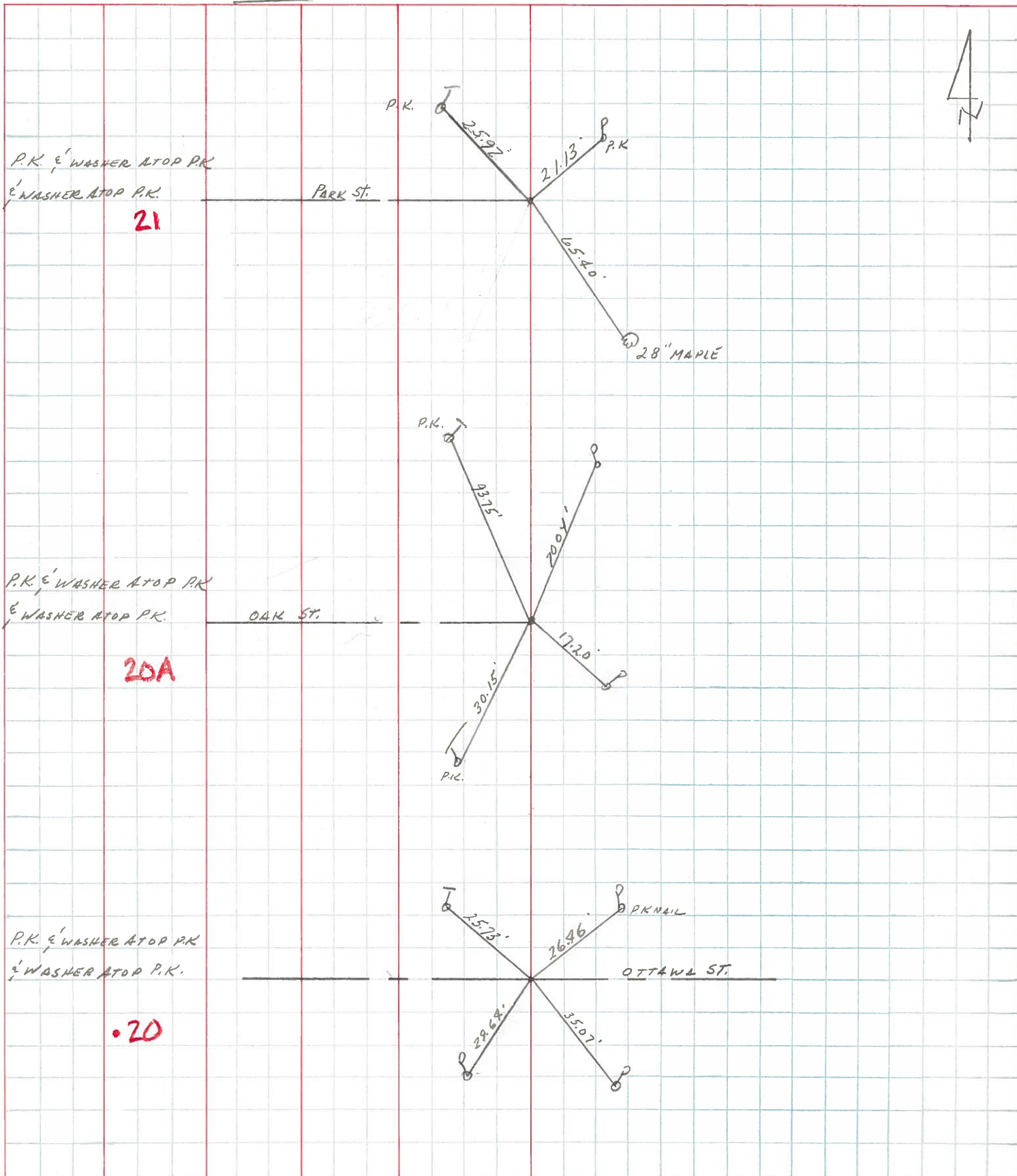
DESCRIPTION TIES - INTERSECTING STREETS - SET BY OTHERS

JOB NO.

LEFT

CENTER LINE

RIGHT



PERSONNEL TITLE PERSONNEL TITLE

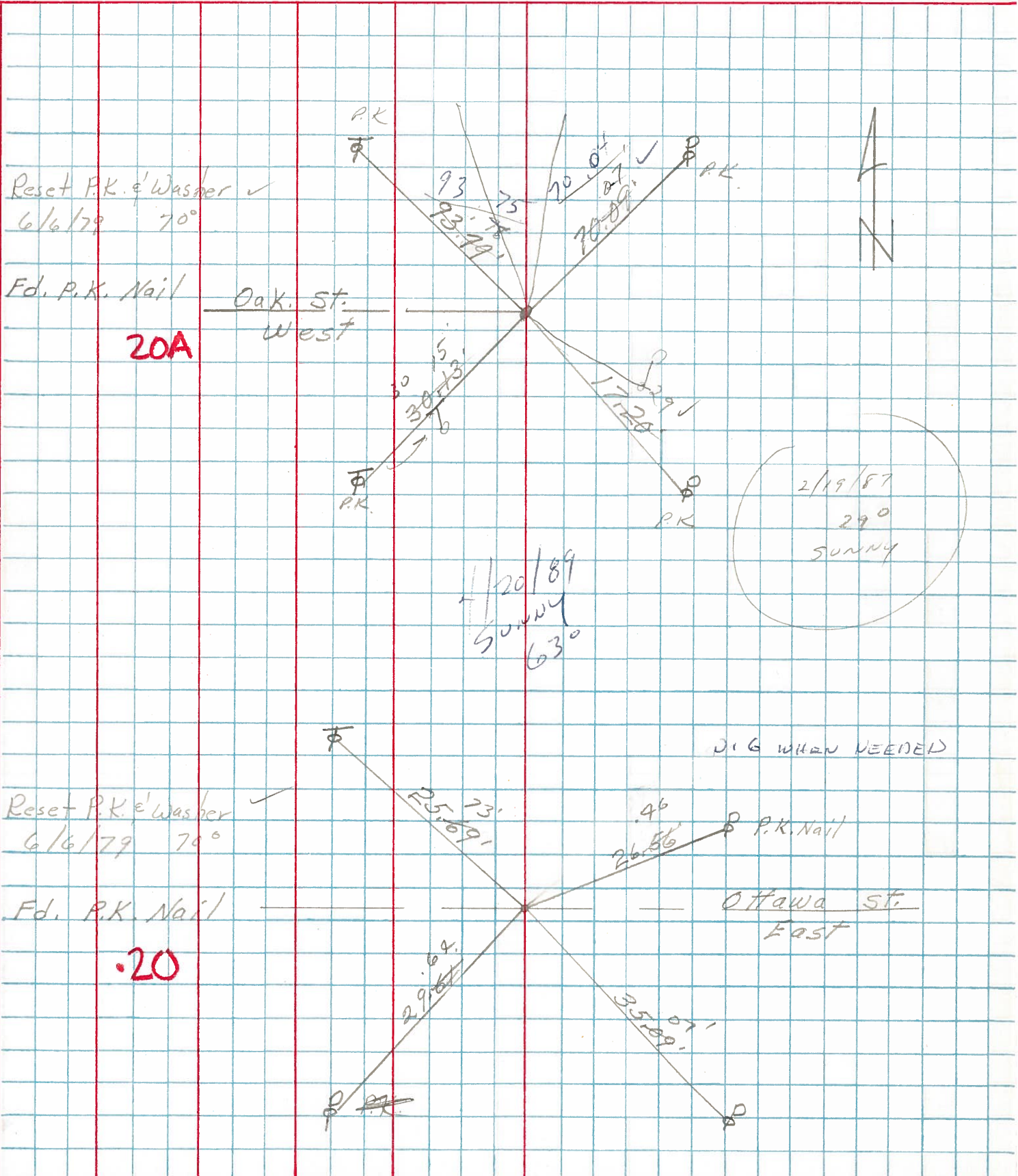
COUNTY Ottawa DATE 4-25-78

S. R. 19 WEATHER Fair

SEC. 554 TEMP. 45°

DESCRIPTION Oak Harbor JOB NO.

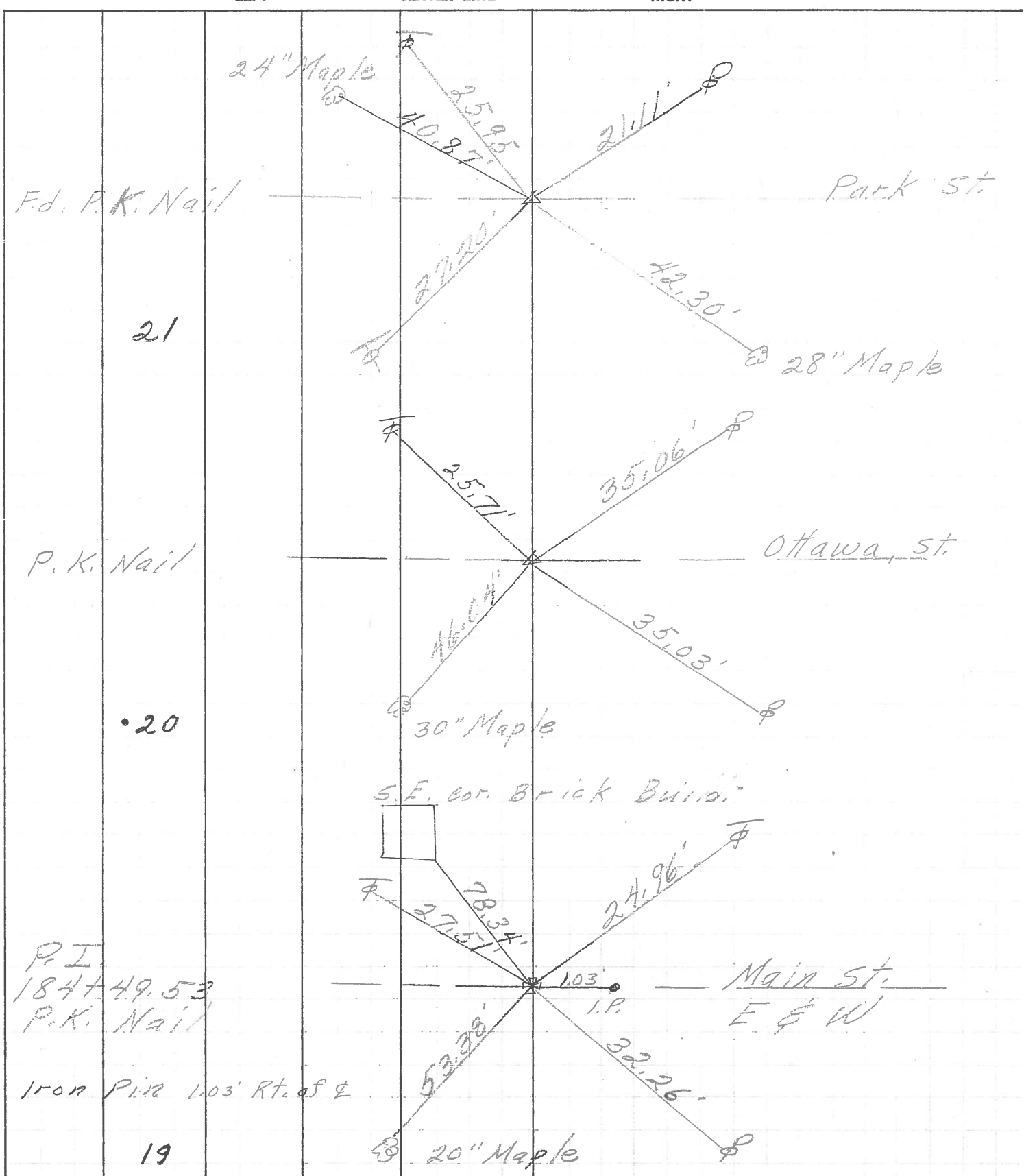
LEFT CENTER LINE RIGHT



PERSONNEL	TITLE	PERSONNEL	TITLE

COUNTY Ottawa DATE 5-4-71
 S. R. 19 WEATHER _____
 SEC. 5 & 4 TEMP. _____

DESCRIPTION Oak Harbor JOB NO. _____



21

20

19

PERSONNEL	TITLE	PERSONNEL	TITLE	COUNTY	DATE	WEATHER	TEMP.
<u>Schneider</u>				<u>Ottawa</u>	<u>5-13-68</u>	<u>Fair</u>	<u>65°</u>
<u>Mosser</u>				S. R. <u>19</u>			
<u>Barbour</u>				SEC. <u>Oak Harbor</u>			
<u>Redding</u>							

DESCRIPTION Ties for Control Points JOB NO. _____

