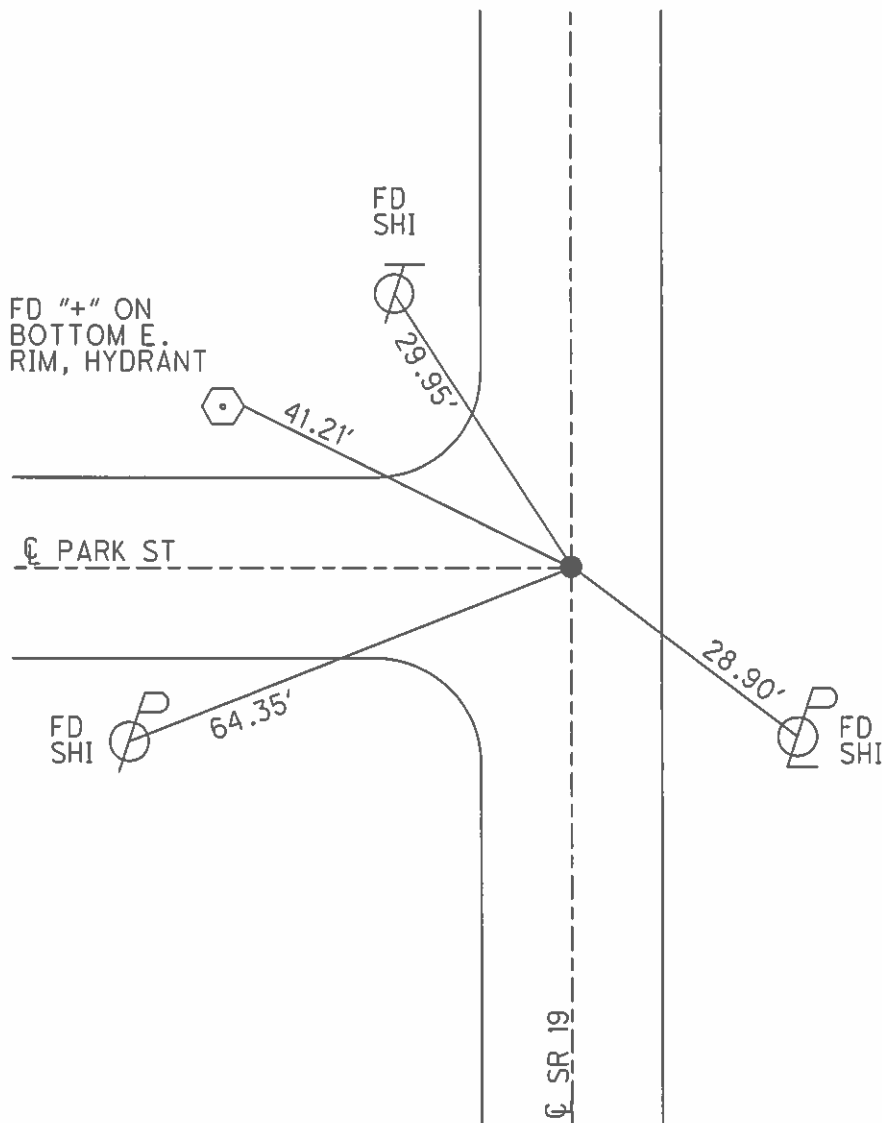
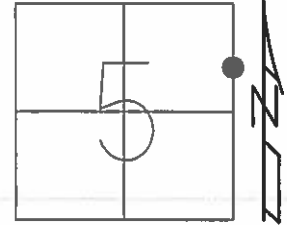


O.D.O.T. DISTRICT 2 SURVEY OFFICE (USE ONLY)

PERSONNEL _____ REFERENCE NO. 21 SHEET 4 OF 29
 NOTES HUSS DATE 10/28/09 ROUTE SR 19
 H.C. CANTERBURY WEATHER FAIR COUNTY OTTAWA
 R.C. HUSS TEMP. 55° TOWNSHIP SALEM
 _____ SECTION 5
 _____ T 6 N R 15 E

TYPE MONUMENT P.K./WASHER
 ON SURFACE - ~~BELOW~~ ON
~~LEFT~~ - CL PAV'T - RIGHT 0.8'
11.7' TO RT EDGE PAVEMENT
 S.L.M. 198+66.26

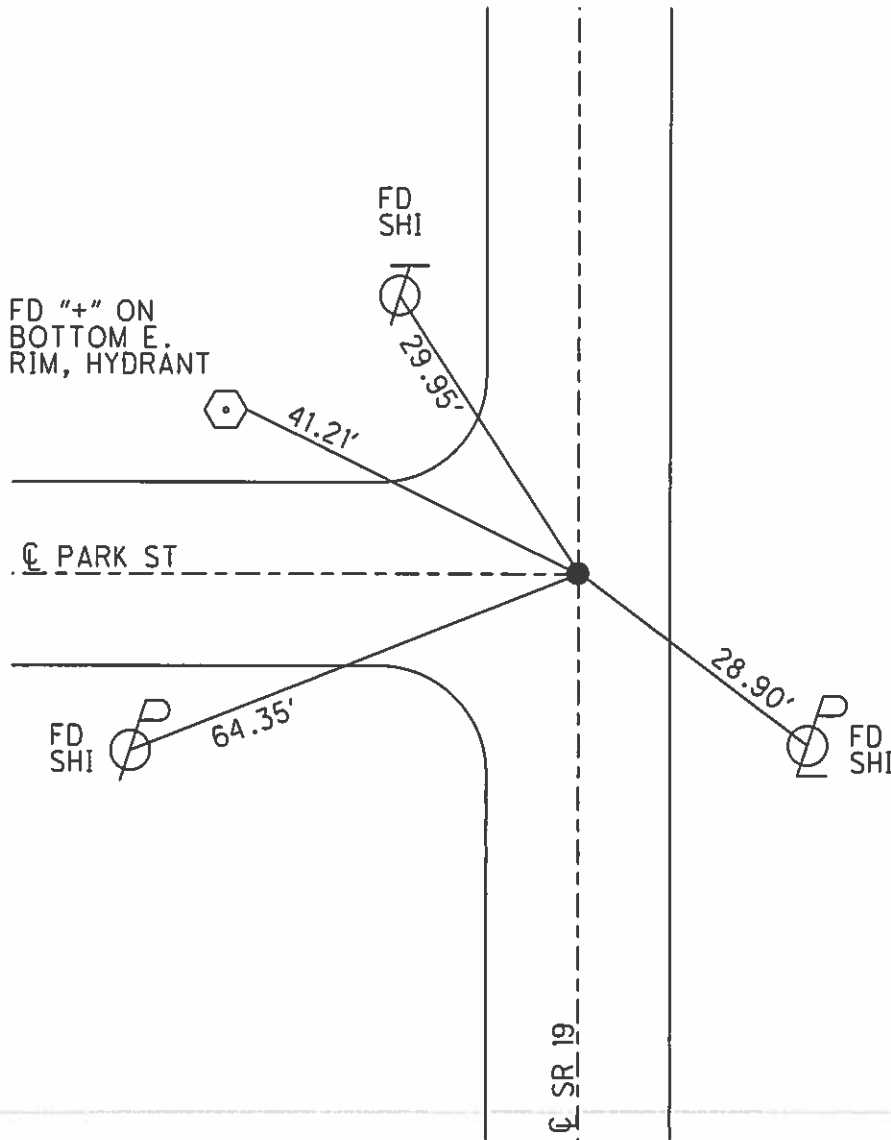
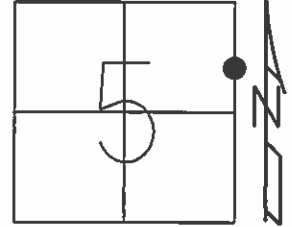
GRID: NORTHING: 673026.463 EASTING: 1791846.136



O.D.O.T. DISTRICT 2 SURVEY OFFICE (USE ONLY)

PERSONNEL _____ REFERENCE NO. 21 SHEET 8 OF 33
 NOTES HUSS DATE 10/28/09 ROUTE SR 19
 H.C. CANTERBURY WEATHER FAIR COUNTY OTTAWA
 R.C. HUSS TEMP. 55° TOWNSHIP SALEM
 _____ SECTION 5
 _____ T 6 N R 15 E

TYPE MONUMENT P.K./WASHER
 ON SURFACE - ~~BELOW~~ ON
~~LEFT~~ - ☉ PAV'T - RIGHT 0.8'
11.7' TO RT EDGE PAVEMENT
 S.L.M. 198+66.26
 Grid: Northing: 673026.463 Easting: 1791846.136



PERSONNEL TITLE PERSONNEL TITLE

COUNTY OTTAWA

DATE 4/20/89

CRONIN
RIPPLE
GEYMAN

S. R. #19

WEATHER SUNNY

SEC. OAK HARBOR

TEMP. 63°

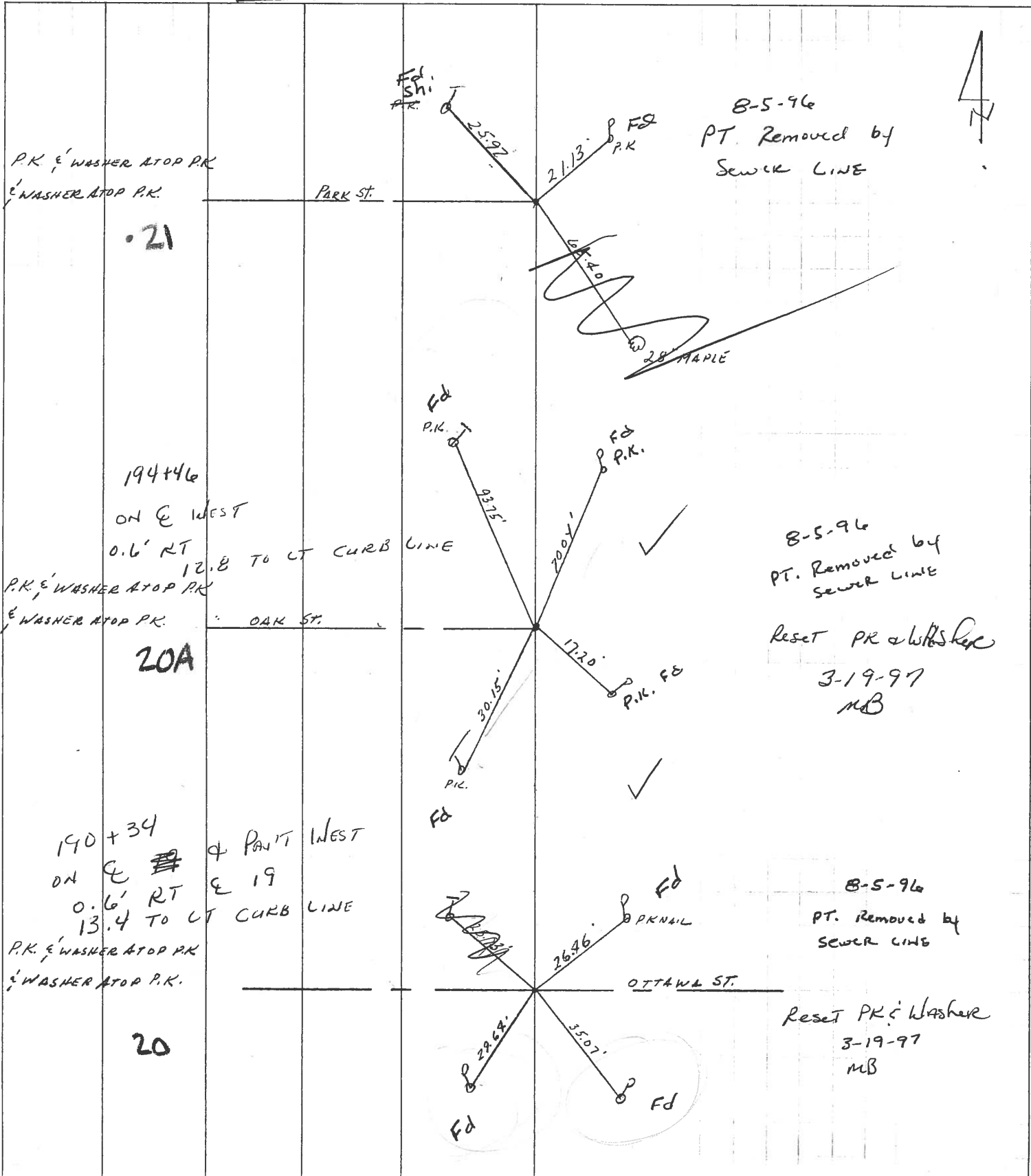
DESCRIPTION TIES - INTERSECTING STREETS - SET BY OTHERS

JOB NO.

LEFT

CENTER LINE

RIGHT



P.K. & WASHER ATOP P.K.
& WASHER ATOP P.K.

21

PARK ST.

Fd
Shi
P.K.

25.92'

21.13'

FB
P.K.

8-5-96
PT. Removed by
SEWER LINE

16.40'

28' MAPLE

Fd
P.K.

93.75'

FB
P.K.

700'

194+46

ON E WEST

0.6' RT

12.8 TO CT CURB LINE

P.K. & WASHER ATOP P.K.

& WASHER ATOP P.K.

OAK ST.

8-5-96
PT. Removed by
SEWER LINE

20A

Reset PR & Washers

3-19-97

MB

Fd
P.K.

30.15'

17.20'

P.K. FB

190+34

ON E ~~19~~

0.6' RT

13.4 TO CT CURB LINE

P.K. & WASHER ATOP P.K.

& WASHER ATOP P.K.

& PAINT WEST

E 19

Fd

29.68'

Fd
P.K. NB

26.46'

OTTAWA ST.

8-5-96

PT. Removed by
SEWER LINE

20

Reset PR & Washers

3-19-97

MB

Fd

29.68'

35.07'

Fd

PERSONNEL

TITLE

PERSONNEL

TITLE

COUNTY OTTAWA

DATE 4/20/89

CRONIN

RIPPLE

GEYMAN

S. R. #19

WEATHER SUNNY

SEC. OAK HARBOR

TEMP. 63°

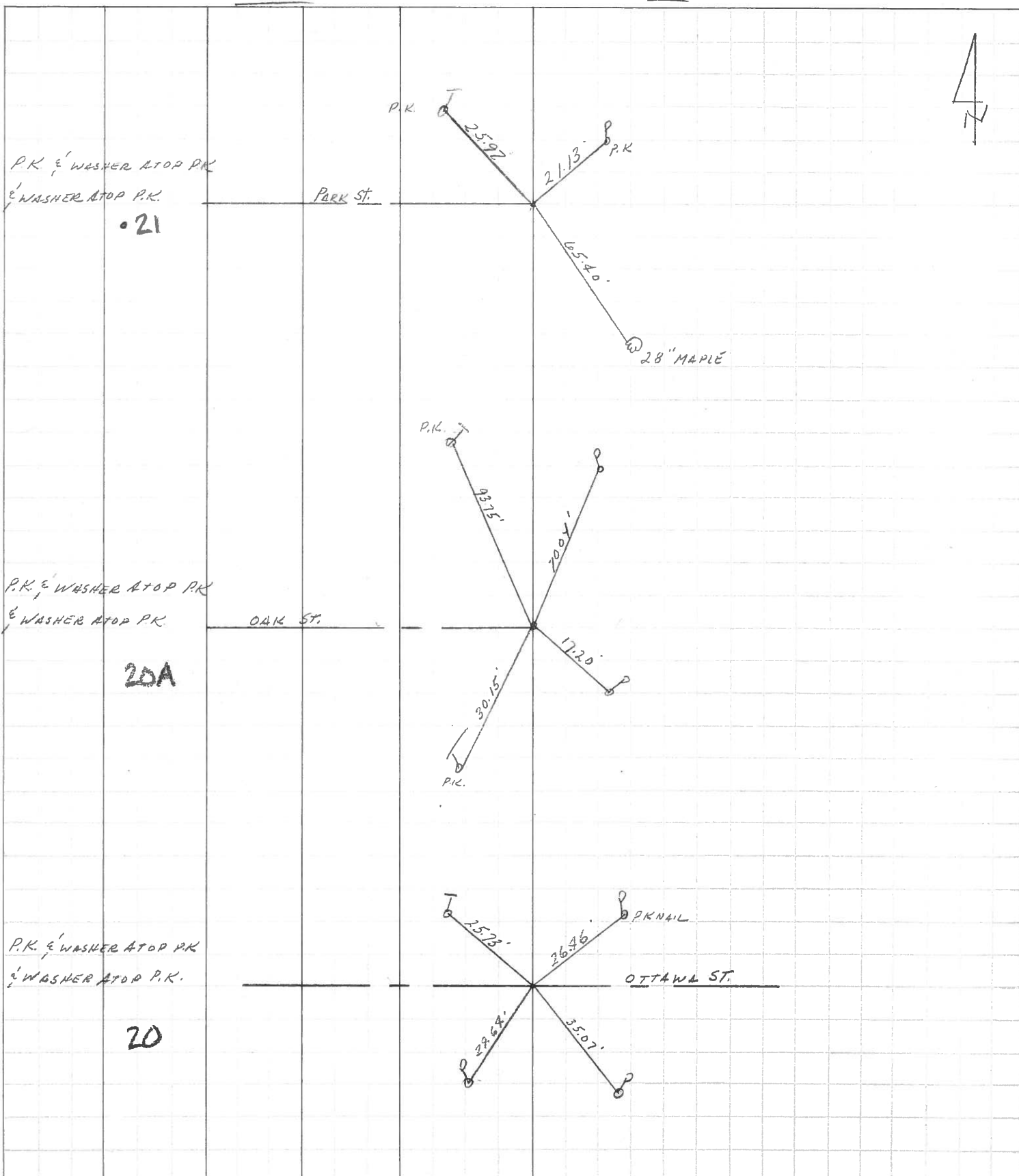
DESCRIPTION TIES - INTERSECTING STREETS - SET BY OTHERS

JOB NO.

LEFT

CENTER LINE

RIGHT



PERSONNEL TITLE PERSONNEL TITLE

COUNTY Ottawa

DATE 4-25-78

S. R. 19

WEATHER Fair - Windy

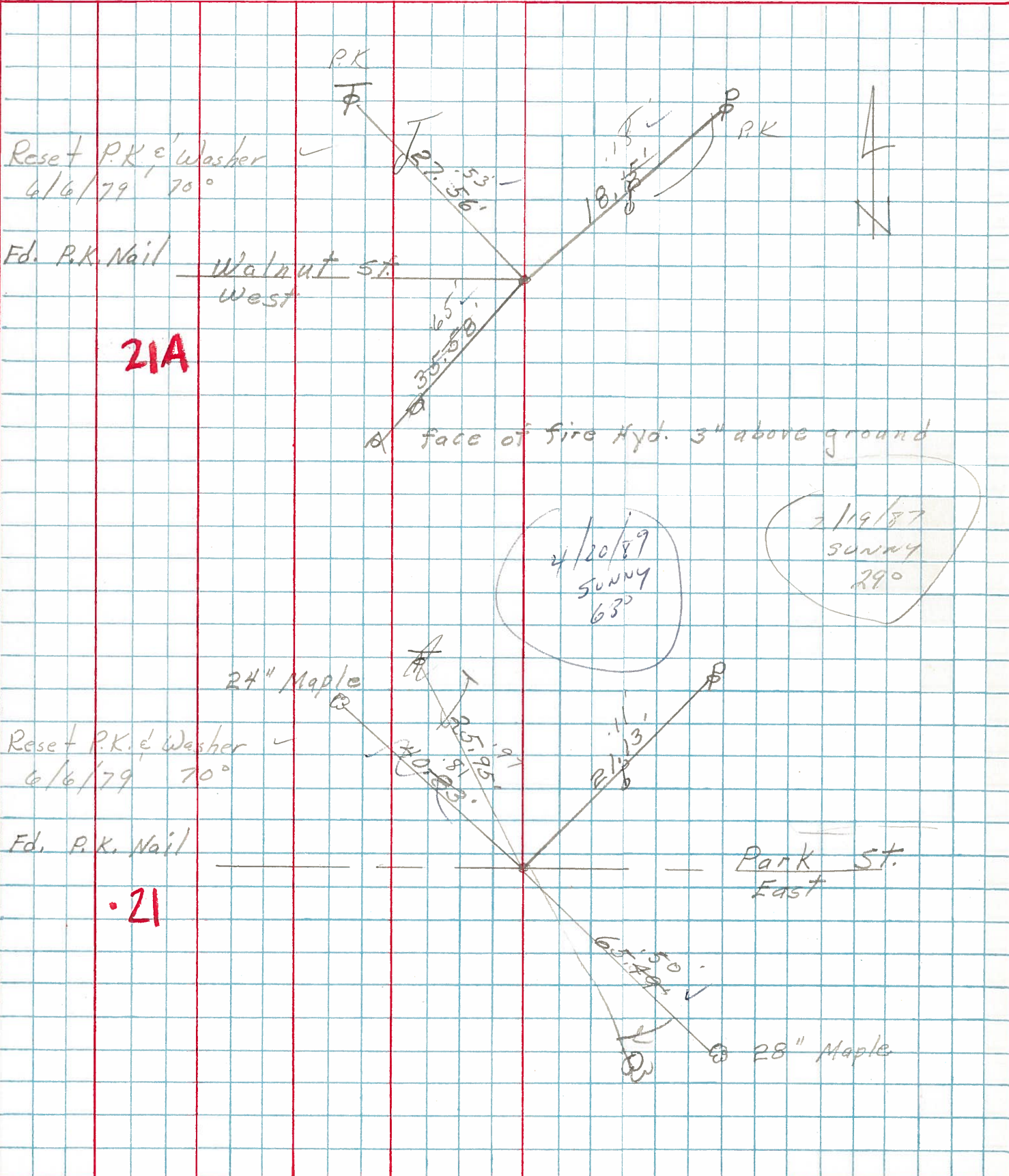
SEC. 554

TEMP. 45°

DESCRIPTION Oak Harbor

JOB NO.

LEFT CENTER LINE RIGHT



Reset P.K. & Washer
6/6/79 70°

Ed. P.K. Nail Walnut St.
West

21A

face of fire Hyd. 3" above ground

4/20/89
SUNNY
63°

2/19/87
SUNNY
29°

24" Maple

Reset P.K. & Washer
6/6/79 70°

Ed. P.K. Nail

Park St.
East

21

28" Maple

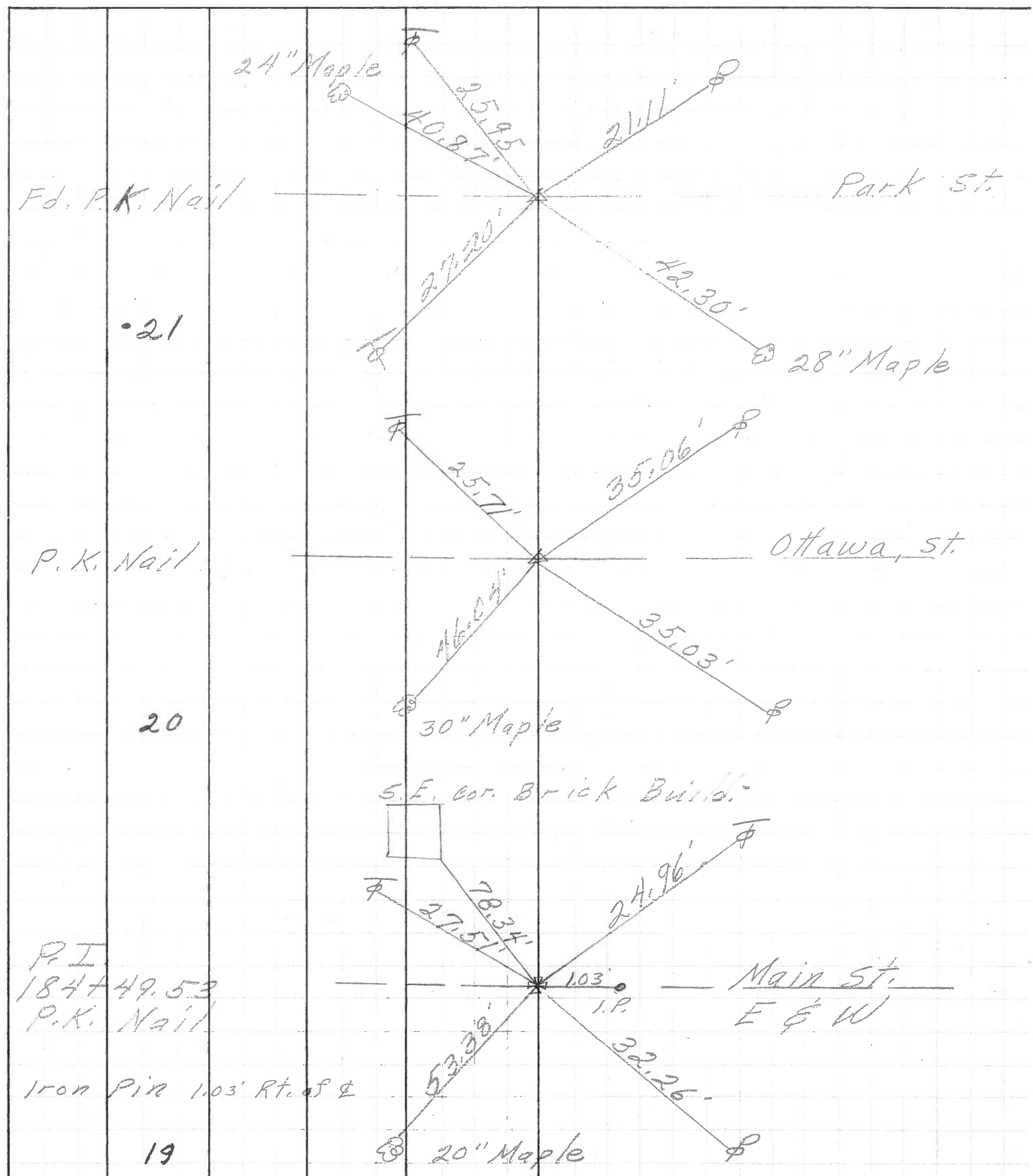
PERSONNEL	TITLE	PERSONNEL	TITLE
_____	_____	_____	_____
_____	_____	_____	_____

COUNTY Ottawa DATE 5-4-71

S. R. 19 WEATHER _____

SEC. 5 & 4 TEMP. _____

DESCRIPTION Oak Harbor JOB NO. _____



PERSONNEL	TITLE	PERSONNEL	TITLE	COUNTY	<u>Ottawa</u>	DATE	<u>5-13-68</u>
<u>Schneider</u>				S. R.	<u>19</u>	WEATHER	<u>Fair</u>
<u>Mosser</u>				SEC.	<u>Oak Harbor</u>	TEMP.	<u>65°</u>
<u>Barbour</u>							
<u>Redding</u>							
DESCRIPTION				<u>Ties for Control Points</u>		JOB NO.	

