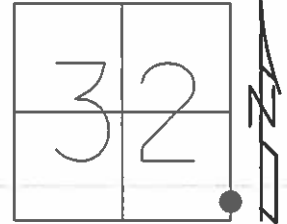


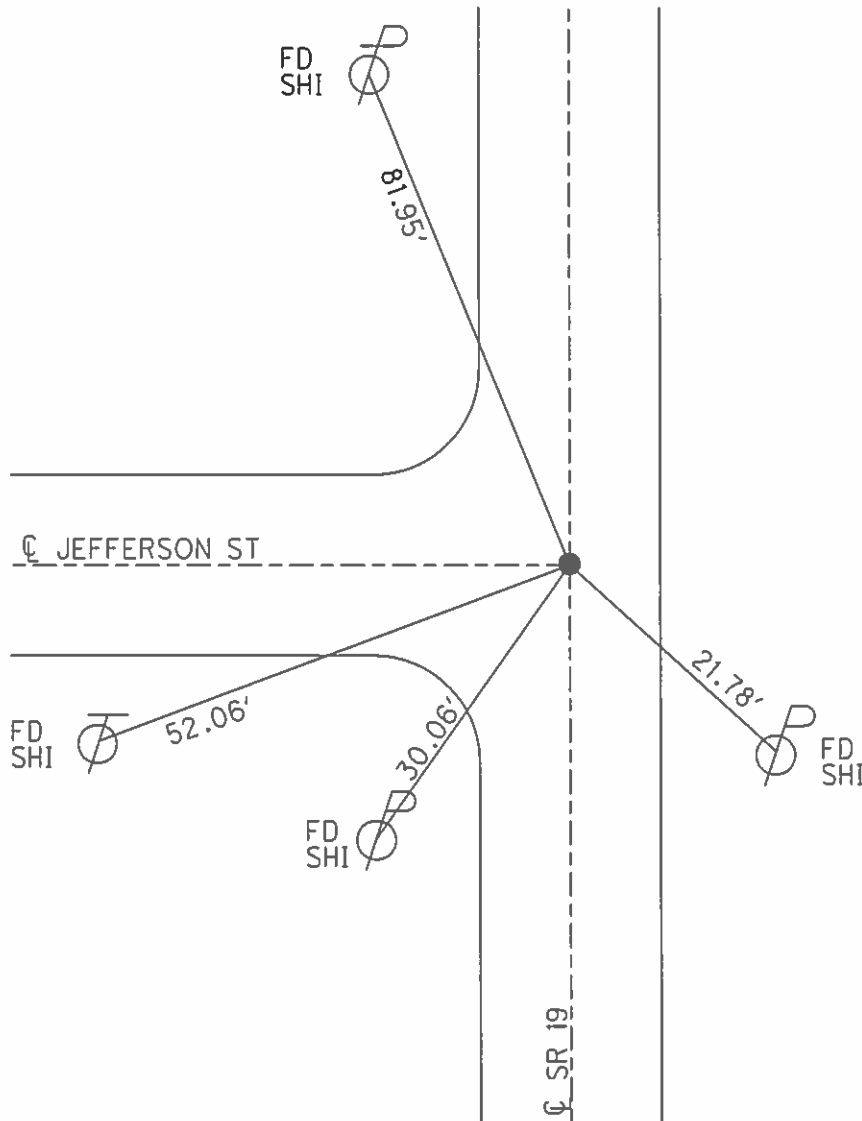
O.D.O.T. DISTRICT 2 SURVEY OFFICE (USE ONLY)

PERSONNEL \_\_\_\_\_ REFERENCE NO. 22 SHEET 7 OF 29  
NOTES HUSS DATE 10/28/09 ROUTE SR 19  
H.C. CANTERBURY WEATHER FAIR COUNTY OTTAWA  
R.C. HUSS TEMP. 55° TOWNSHIP SALEM  
SECTION 32  
T 6 N R 15 E

TYPE MONUMENT MAG/WASHER  
ON SURFACE - ~~BELOW~~ ON  
LEFT - ☉ PAV'T - RIGHT ON  
12.7' TO RT EDGE PAVEMENT  
S.L.M. 211+02.81



GRID: NORTHING: 674262.775 EASTING: 1791858.851



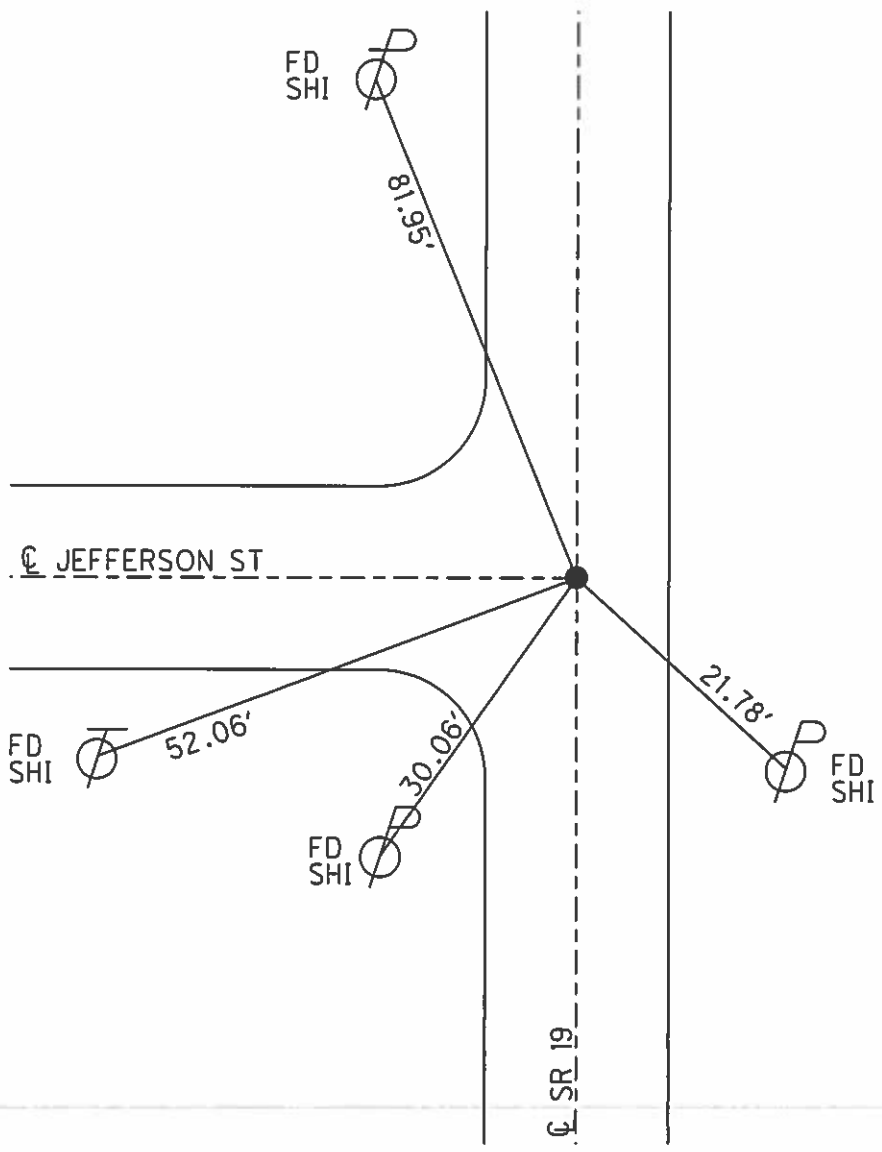
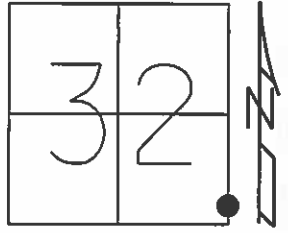
O.D.O.T. DISTRICT 2 SURVEY OFFICE (USE ONLY)

PERSONNEL \_\_\_\_\_ REFERENCE NO. 22 SHEET 11 OF 33

NOTES HUSS DATE 10/28/09 ROUTE SR 19  
 H.C. CANTERBURY WEATHER FAIR COUNTY OTTAWA  
 R.C. HUSS TEMP. 55° TOWNSHIP SALEM  
 SECTION 32  
 T 6 N R 15 E

TYPE MONUMENT MAG/WASHER  
 ON SURFACE - ~~BELOW~~ ON  
 LEFT - ☉ PAV'T - RIGHT ON  
12.7' TO RT EDGE PAVEMENT  
 S.L.M. 211+02.81

Grid: Northing: 674262.775 Easting: 1791858.851



PERSONNEL TITLE PERSONNEL TITLE

COUNTY OTTAWA

DRAWN 4/24/89

DATE 4/20/89

CRONIN

RIPPLE

GEYMAN

S. R. #19

WEATHER SUNNY

SEC. OAK HARBOR

TEMP. 63°

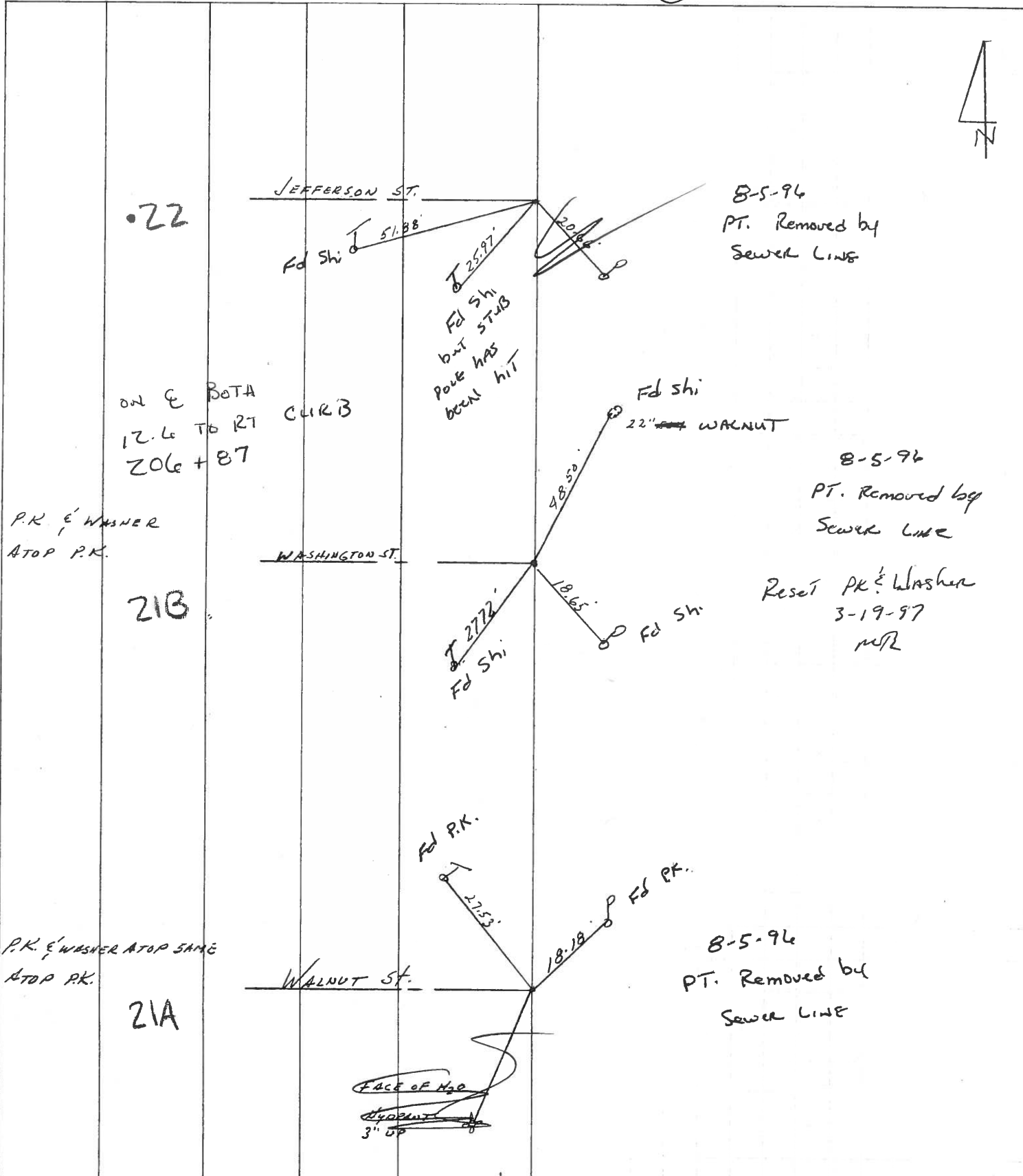
DESCRIPTION TIES - INTERSECTING STREETS - SET BY OTHERS

LEFT

CENTER LINE

RIGHT

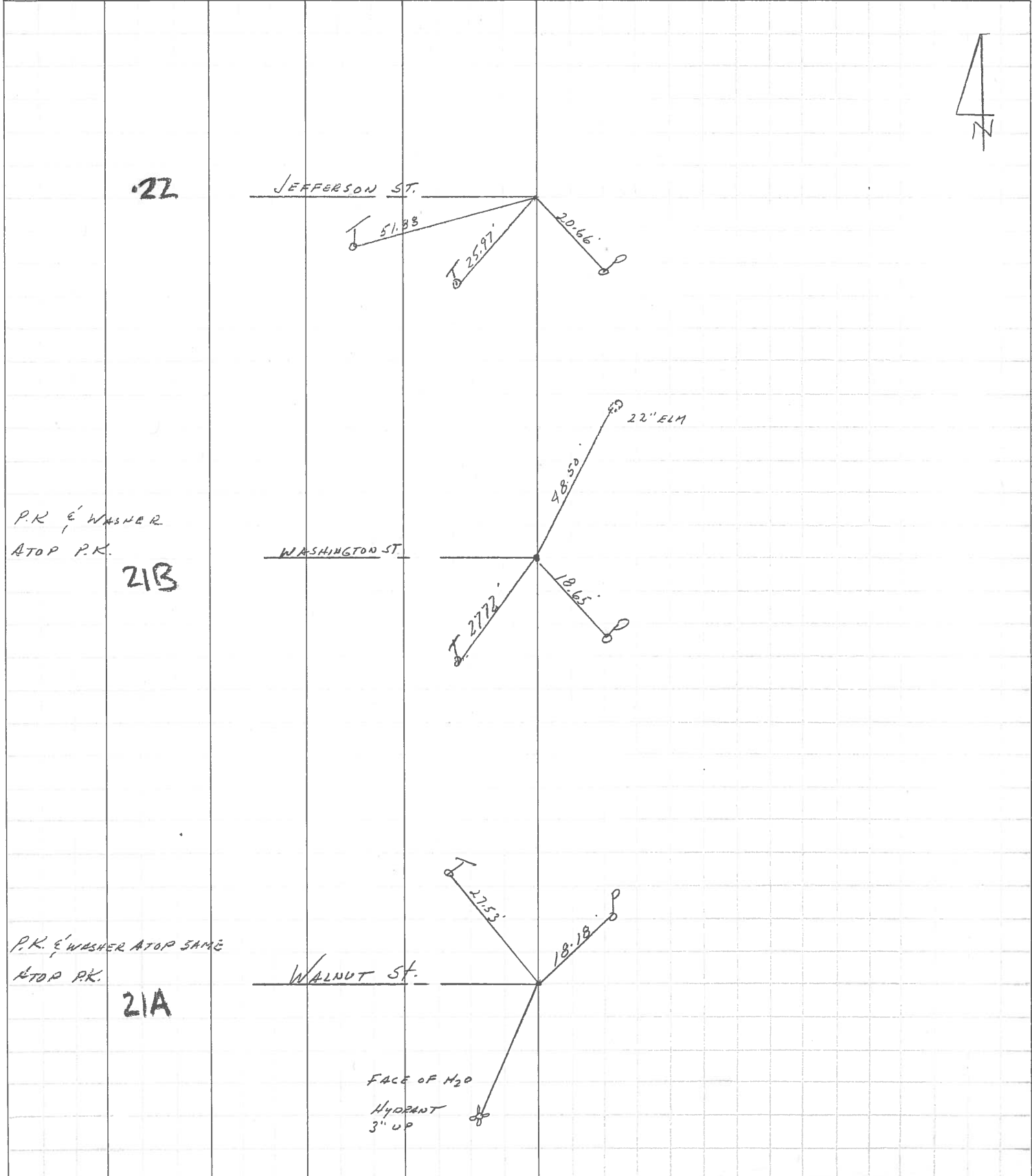
JOB NO. \_\_\_\_\_



PERSONNEL	TITLE	PERSONNEL	TITLE	COUNTY	DATE	WEATHER	TEMP.
<u>CRONIN</u>				<u>OTTAWA</u>	<u>4/24/89</u>	<u>SUNNY</u>	<u>63°</u>
<u>RIPPLE</u>				<u>#19</u>			
<u>GEYMAN</u>				<u>OAK HARBOR</u>			

DESCRIPTION TIES - INTERSECTING STREETS - SET BY OTHERS JOB NO. \_\_\_\_\_

LEFT CENTER LINE RIGHT



22

JEFFERSON ST.

51.83'

25.97'

20.66'

P.K. & WASHER ATOP P.K.

21B

WASHINGTON ST.

48.50'

22' ELM

27.72'

18.65'

P.K. & WASHER ATOP SAME ATOP P.K.

21A

WALNUT ST.

27.53'

18.18'

FACE OF H<sub>2</sub>O  
HYDRANT  
3" UP



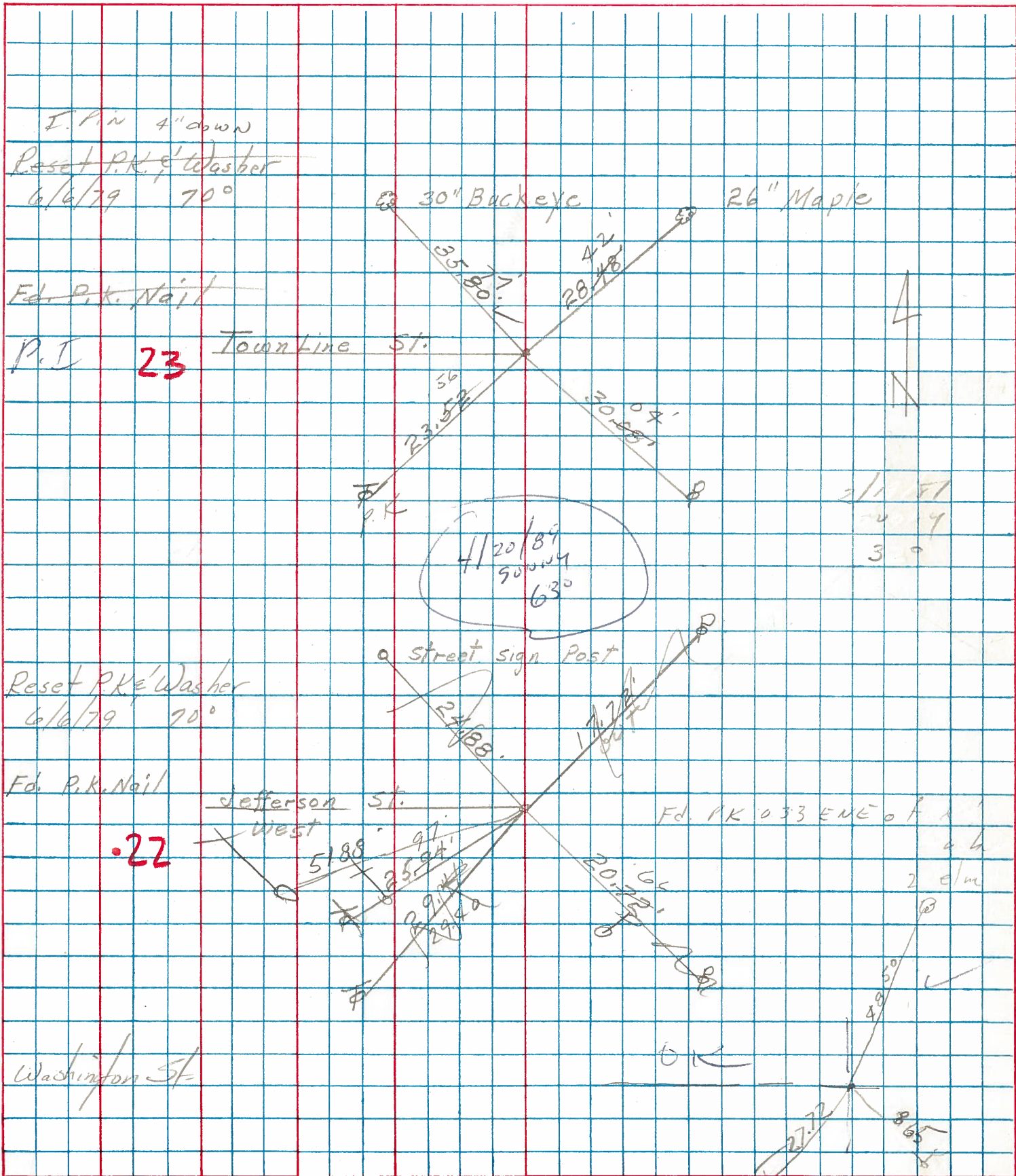
PERSONNEL TITLE PERSONNEL TITLE

COUNTY Ottawa DATE 4-25-78

S. R. 19 WEATHER Fair-Windy

SEC. 3263 TEMP. 45°

DESCRIPTION Oak Harbor LEFT CENTER LINE RIGHT JOB NO.



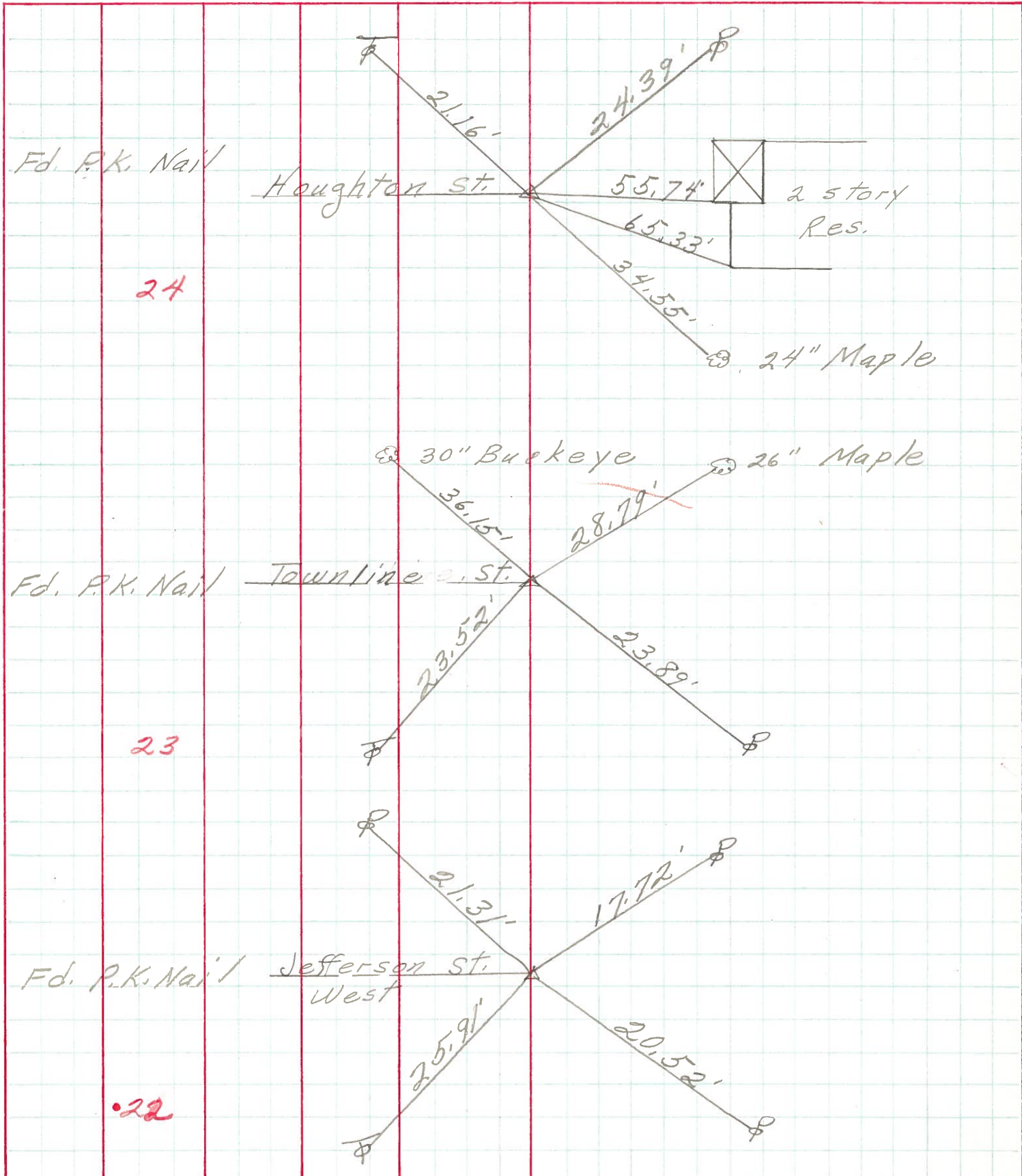
PERSONNEL TITLE PERSONNEL TITLE

COUNTY Ottawa DATE 5-4-71

S. R. 19 WEATHER

SEC. 32E 33 TEMP.

DESCRIPTION Oak Harbor LEFT CENTER LINE RIGHT JOB NO.



PERSONNEL TITLE PERSONNEL TITLE

SHEET NO. 7

Schneider \_\_\_\_\_ COUNTY Ottawa DATE 5-13-68

Mosser \_\_\_\_\_ S. R. 19 WEATHER Fair

Barbour \_\_\_\_\_ SEC. Oak Harbor TEMP. 65°

Redding \_\_\_\_\_

DESCRIPTION Ties for Control Points JOB NO. \_\_\_\_\_

LEFT CENTER LINE RIGHT

