

O.D.O.T. DISTRICT 2 SURVEY OFFICE (USE ONLY)

PERSONNEL _____ REFERENCE NO. 23 SHEET 8 OF 29
 NOTES HUSS DATE 10/28/09 ROUTE SR 19
 H.C. CANTERBURY WEATHER FAIR COUNTY OTTAWA
 R.C. HUSS TEMP. 55° TOWNSHIP SALEM
 SECTION 32
 T 6 N R 15 E

TYPE MONUMENT P.K./WASHER

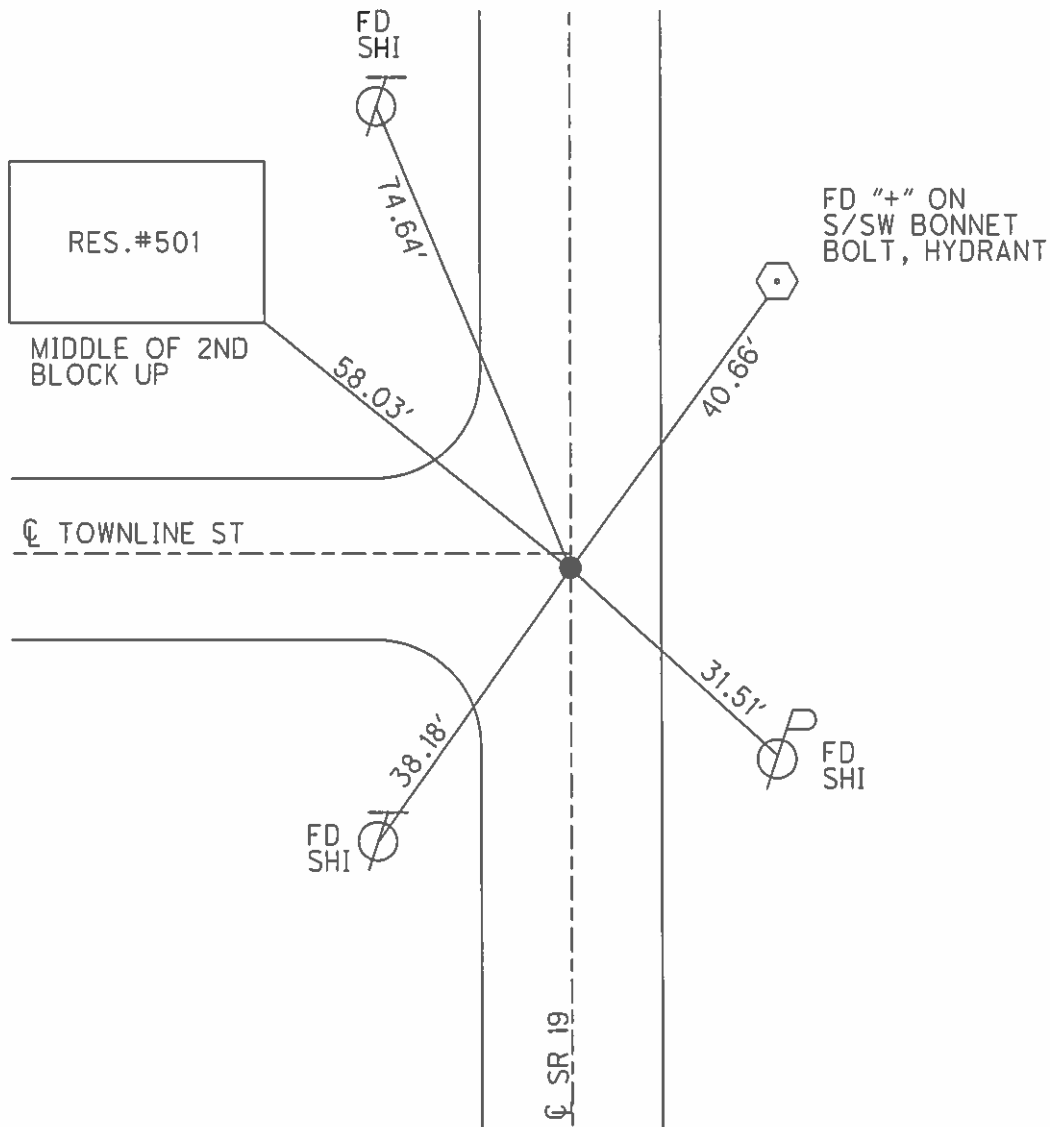
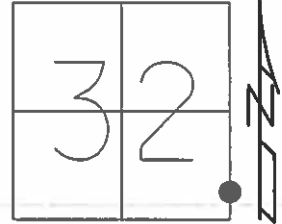
ON SURFACE - ~~BELOW~~ ON _____

LEFT - ☉ PAV'T - RIGHT ON, 2' S. OF TOWNLINE

11.9' TO RT EDGE PAVEMENT

S.L.M. 213+93.14

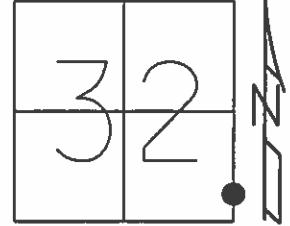
GRID: NORTHING: 674553.514 EASTING: 1791861.906



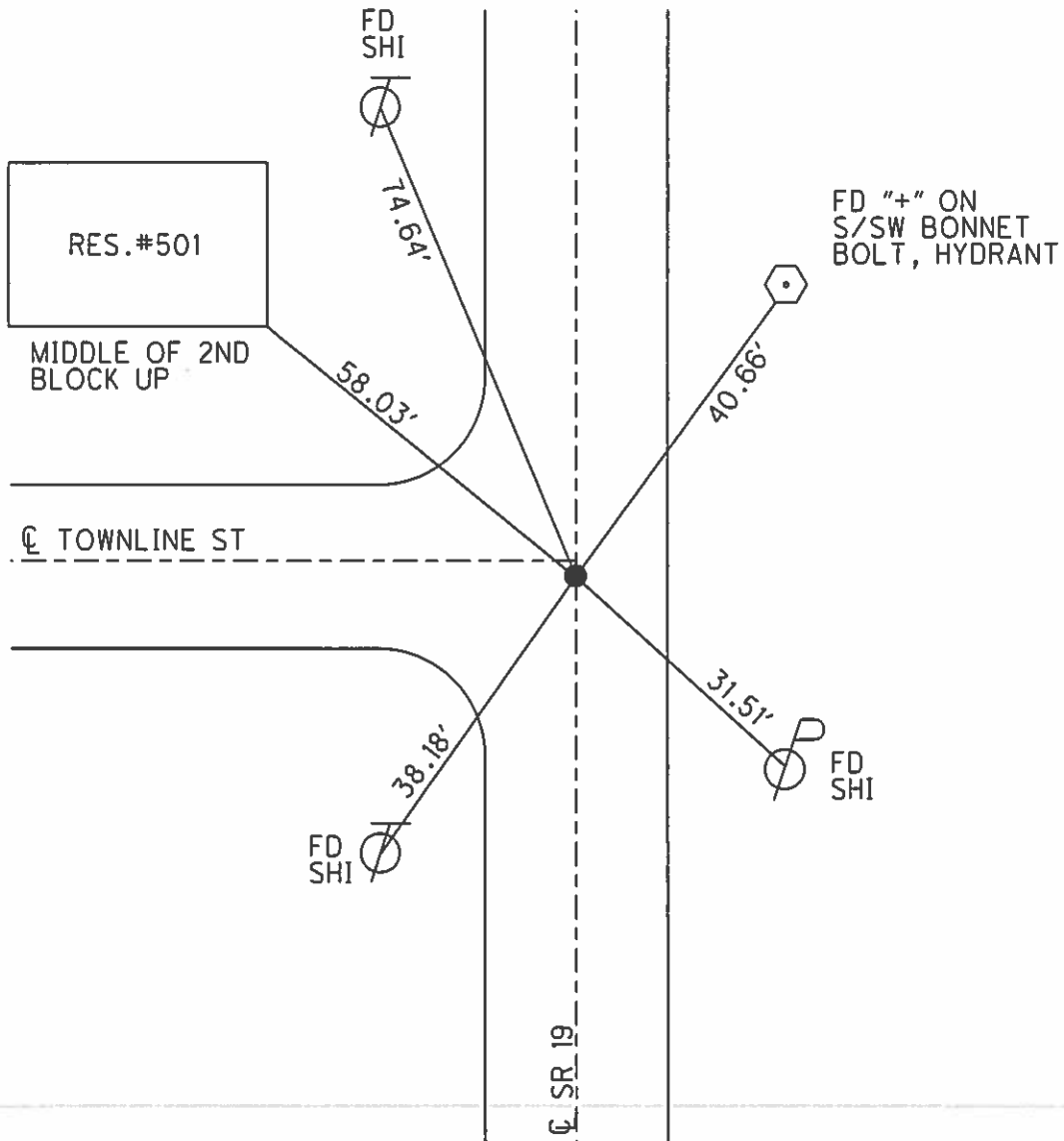
O.D.O.T. DISTRICT 2 SURVEY OFFICE (USE ONLY)

PERSONNEL _____ REFERENCE NO. 23 SHEET 12 OF 33
 NOTES HUSS DATE 10/28/09 ROUTE SR 19
 H.C. CANTERBURY WEATHER FAIR COUNTY OTTAWA
 R.C. HUSS TEMP. 55° TOWNSHIP SALEM
 SECTION 32
 T 6 N R 15 E

TYPE MONUMENT P.K./WASHER
 ON SURFACE - ~~BELOW~~ ON _____
 LEFT - ☉ PAV'T - RIGHT ON, 2' S. OF TOWNLIN
11.9' TO RT EDGE PAVEMENT
 S.L.M. 213+93.14



Grid: Northing: 674553.514 Easting: 1791861.906



O.D.O.T. DISTRICT 2 SURVEY OFFICE

PERSONNEL	REFERENCE NO. <u>20</u>	SHEET <u>20</u> OF <u> </u>
NOTES <u>CRONIN</u>	DRAWN <u>4/24/89</u>	
H.C. <u>RIPPLE</u>	DATE <u>4/20/89</u>	ROUTE <u># 19</u>
R.C. <u>GEYMAN</u>	WEATHER <u>SUNNY</u>	COUNTY <u>OTTAWA</u>
	TEMP. <u>6.3°</u>	TOWNSHIP <u>SALEM & CARROLL</u>
		SECTION <u>4, 5, 32 & 33</u>
		T <u>6</u> N R <u>15</u> E

TYPE MONUMENT P.K. & WASHER
 ON SURFACE - BELOW _____
 LEFT - PAV'T. - RIGHT _____
 TO _____ EDGE PAVEMENT
 S.L.M. _____ 212+13.35 (1951 Plans)

23

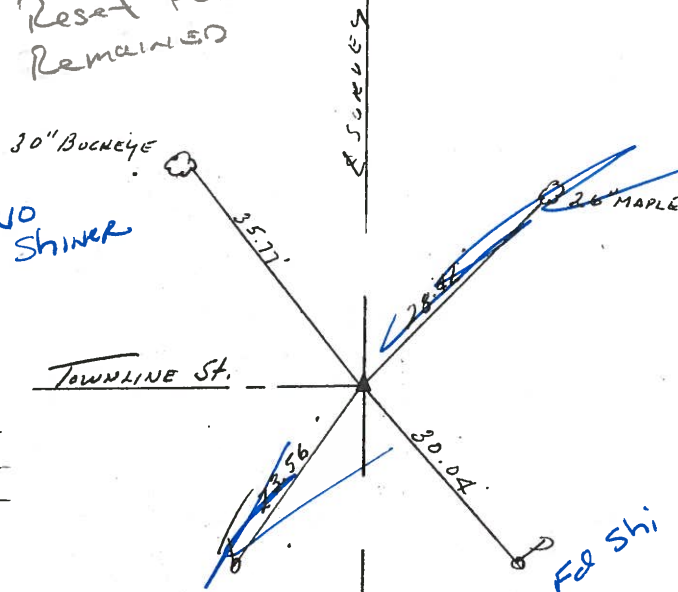
T 7 N - R 15 E
T 6 N - R 15 E

32	33
5	4



8-5-96
 PT Removed by
 Sewer Line
 DID NOT Reset Point
 No TIES Remained

P.I.
D = 00° 55' Lt. PLAN
I P.N 6" BELOW
SURFACE
A = 01° 11' Lt. To C/L MEAS.
4/7/83



O.D.O.T. DISTRICT 2 SURVEY OFFICE

PERSONNEL _____

REFERENCE NO. 20

SHEET ¹⁹~~20~~ OF 22

NOTES CRONIN

DRAWN 4/24/89

H.C. RIPPLE

DATE 4/20/89

R.C. GEYMAN

WEATHER SUNNY

TEMP. 63°

ROUTE # 19

COUNTY OTTAWA

TOWNSHIP SALEM & CARROLL

SECTION 4, 5, 32, 33

T 6 N R 15 E

23

TYPE MONUMENT P.K. & WASHER

ON SURFACE - BELOW _____

LEFT - CL PAV'T. - RIGHT _____

TO _____ EDGE PAVEMENT

S.L.M. 212+13.35 (1951 PLANS)

T 7 N - R 15 E
T 6 N - R 15 E

32	33
5	4



NOTE:
8-5-90
SEWER LINE CONSTRUCTION
DISTURBED CONTROL POINT,
NO TIES REMAINED.
DID NOT RESET.
SLOK

P.I.

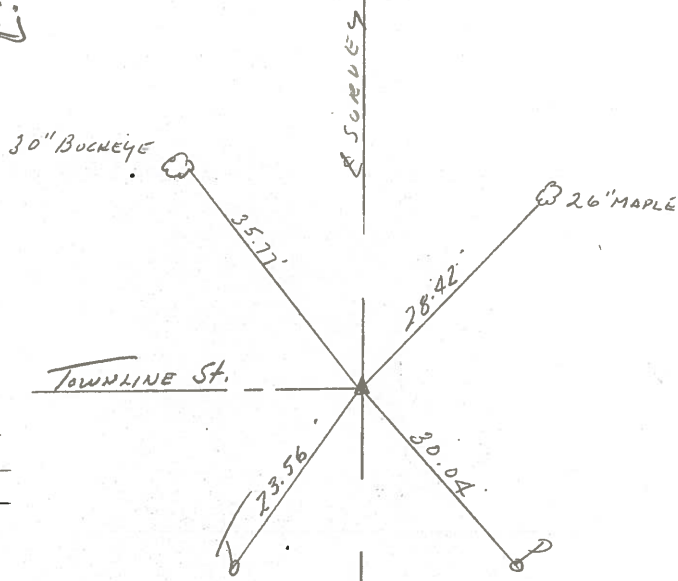
Δ = 00° 55' LT. PLAN

I P.N 6" BELOW

SURFACE

Δ = 01° 11' LT. TO C/L MEAS.

4/7/83



PERSONNEL TITLE PERSONNEL TITLE

COUNTY Ottawa

DATE 2

S. R. 19

WEATHER 1 1.10

SEC. 32E

TEMP. _____

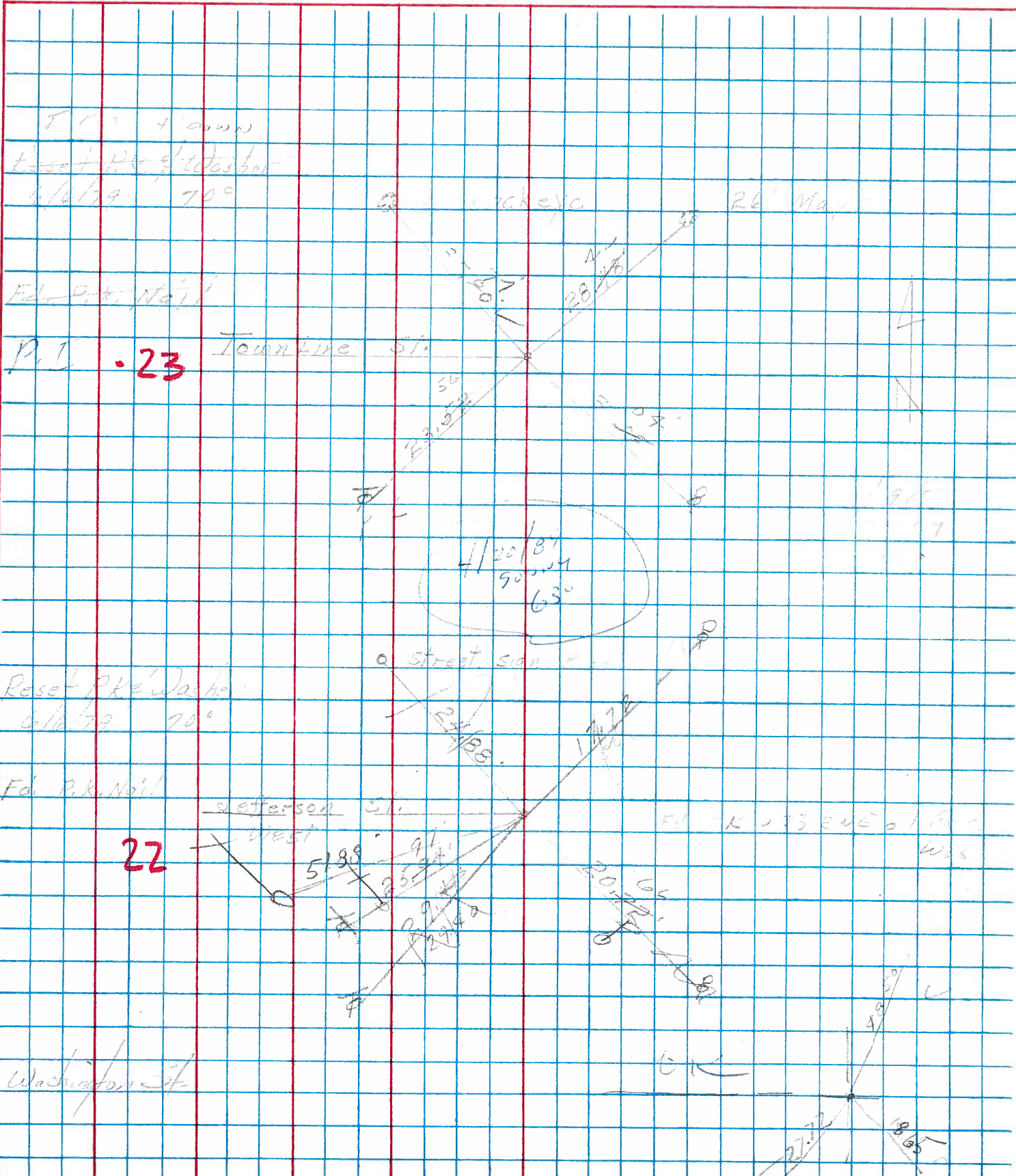
DESCRIPTION Oak Harbor

JOB NO. _____

LEFT

CENTER LINE

RIGHT



PERSONNEL TITLE PERSONNEL TITLE
 Schneider _____
 Mosser _____
 Barbour _____
 Redding _____

COUNTY Ottawa DATE 5-13-68
 S. R. 19 WEATHER Fair
 SEC. Oak Harbor TEMP. 65°

DESCRIPTION Ties for Control Points JOB NO. _____

