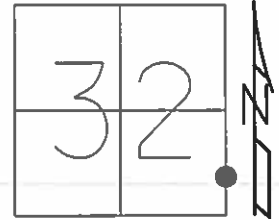


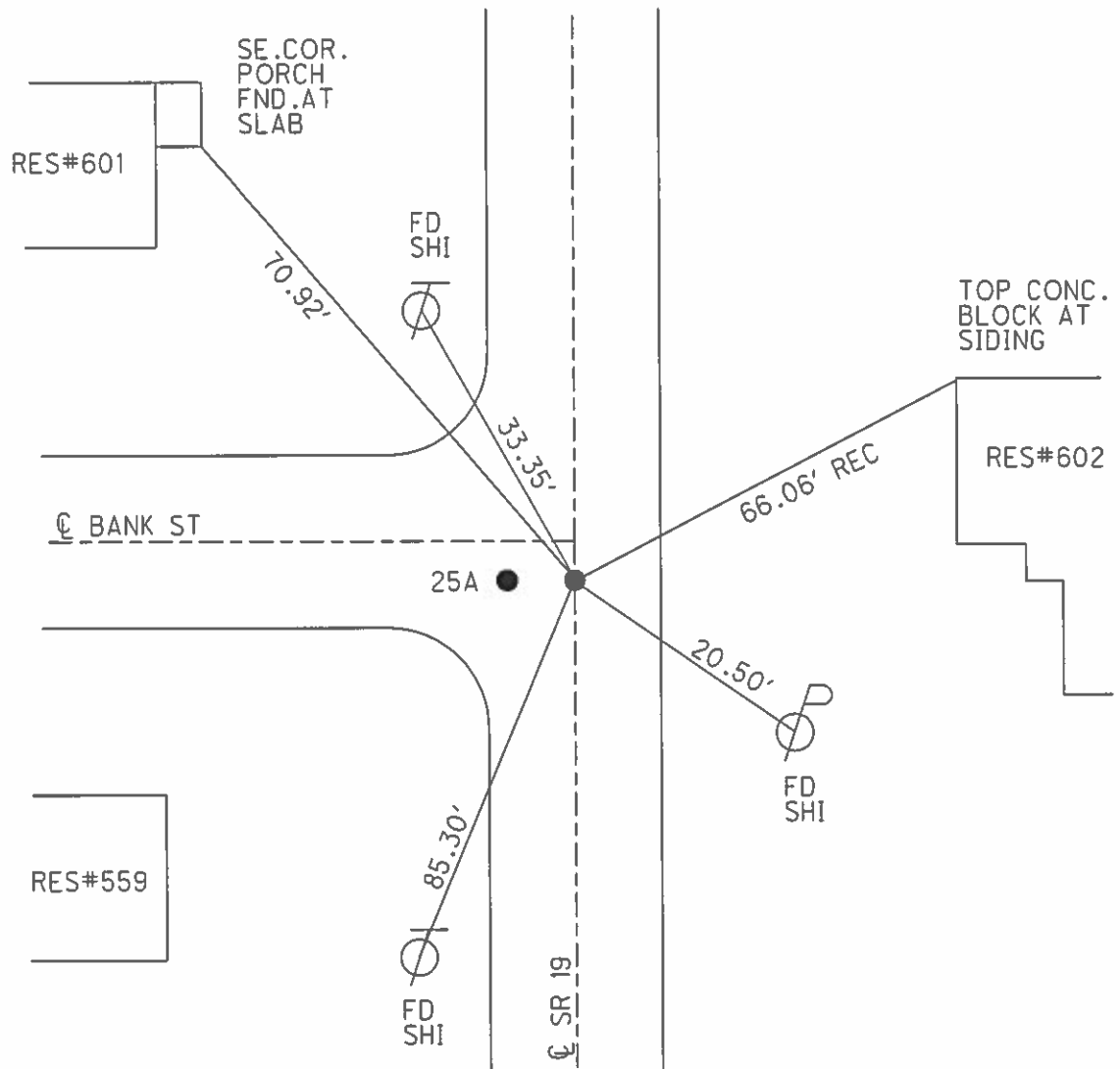
**O.D.O.T. DISTRICT 2 SURVEY OFFICE (USE ONLY)**

PERSONNEL \_\_\_\_\_ REFERENCE NO. 25 SHEET 10 OF 29  
 NOTES HUSS DATE 10/28/09 ROUTE SR 19  
 H.C. CANTERBURY WEATHER FAIR COUNTY OTTAWA  
 R.C. GOLDBERG TEMP. 50° TOWNSHIP SALEM  
 SECTION 32  
 T 7 N R 15 E

TYPE MONUMENT MAG/WASHER  
 ON SURFACE - ~~BELOW~~ ON  
 LEFT - Q PAV'T - RIGHT ON  
13.4' TO RT EDGE PAVEMENT  
 S.L.M. 224+03.87



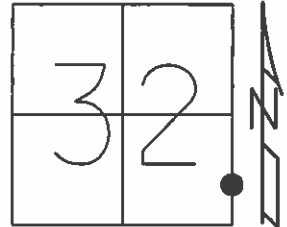
GRID: NORTHING: 675563.732 EASTING: 179.1856.758



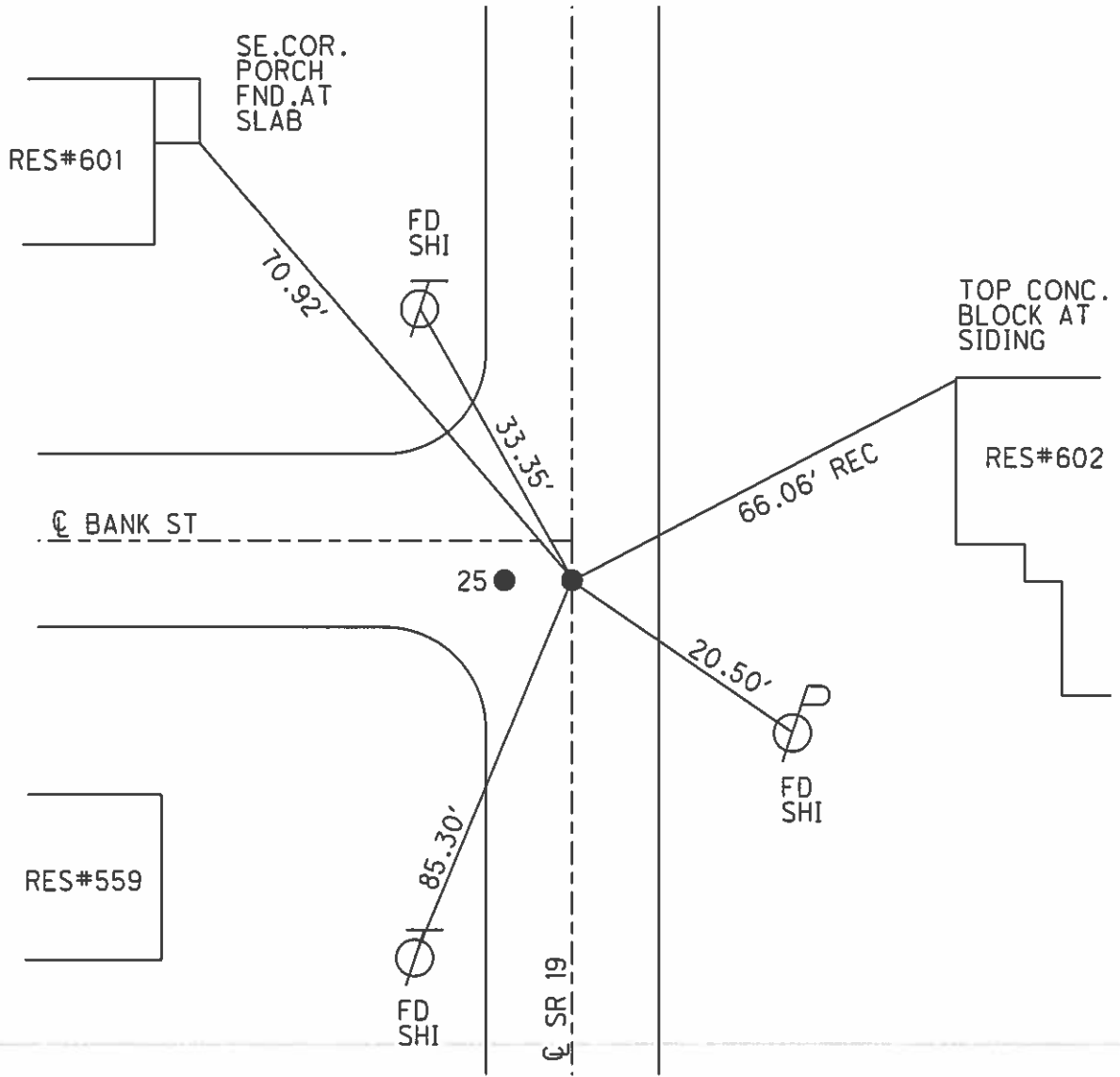
O.D.O.T. DISTRICT 2 SURVEY OFFICE (USE ONLY)

PERSONNEL \_\_\_\_\_ REFERENCE NO. 25 SHEET 14 OF 33  
 NOTES HUSS DATE 10/28/09 ROUTE SR 19  
 H.C. CANTERBURY WEATHER FAIR COUNTY OTTAWA  
 R.C. GOLDBERG TEMP. 50° TOWNSHIP SALEM  
 SECTION 32  
 T 7 N R 15 E

TYPE MONUMENT MAG/WASHER  
 ON SURFACE - ~~BELOW~~ ON \_\_\_\_\_  
 LEFT - ☉ PAV'T - RIGHT ON \_\_\_\_\_  
13.4' TO RT EDGE PAVEMENT  
 S.L.M. 224+03.87



Grid: Northing: 675563.732 Easting: 179.1856.758



PERSONNEL

TITLE

PERSONNEL

TITLE

COUNTY OTTAWA

DRAWN 4/24/89

DATE 4/20/89

CRONIN

RIPPLE

GEYMAN

S. R. #19

WEATHER SUNNY

SEC. OAK HARBOR

TEMP. 63°

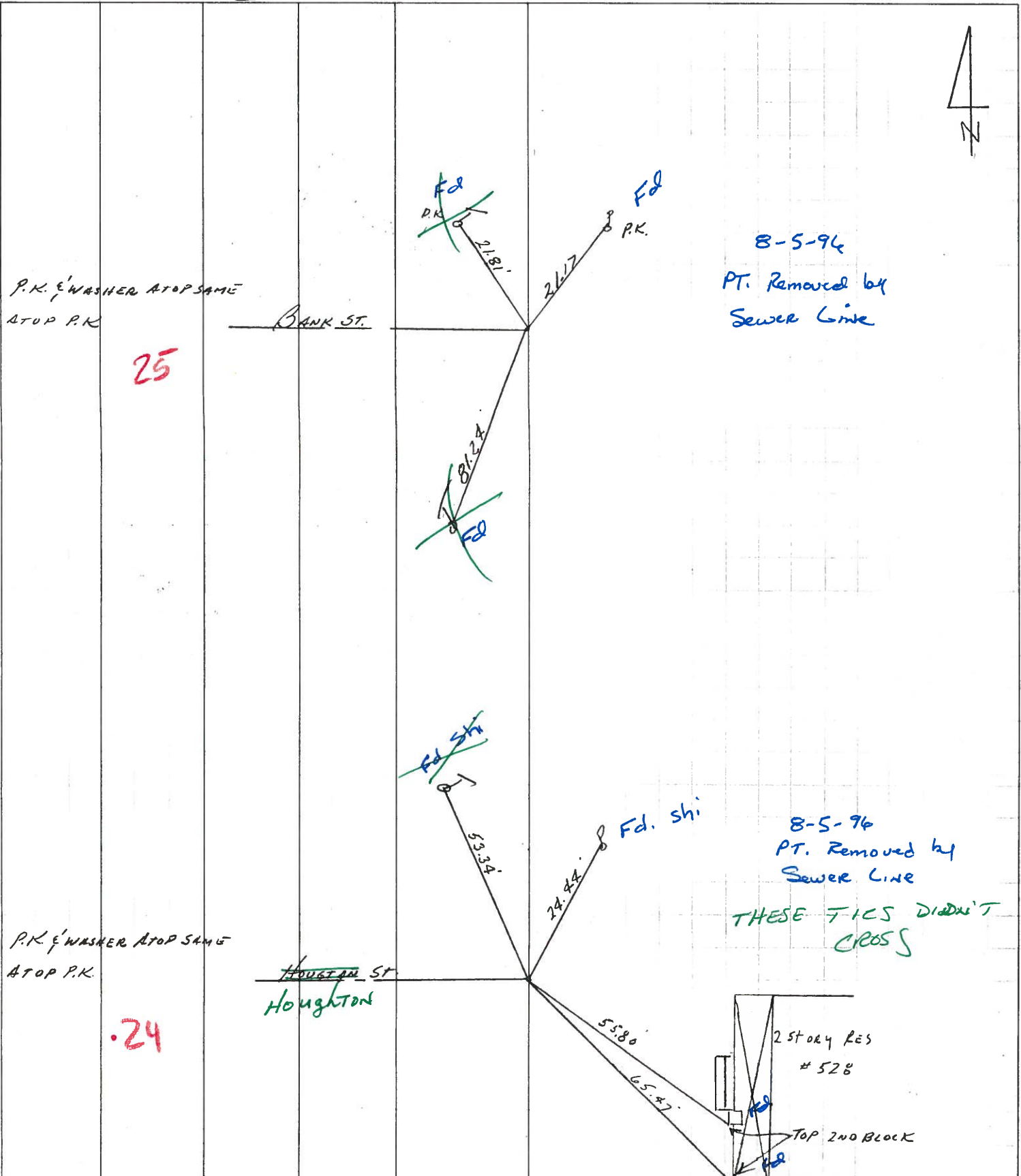
DESCRIPTION TIES INTERSECTING STREETS - SET BY OTHERS

JOB NO.

LEFT

CENTER LINE

RIGHT



P.K. & WASHER ATOP SAME  
ATOP P.K.

25

BANK ST.

Fd  
P.K.  
21.81

Fd  
P.K.  
26.17

8-5-96  
PT. Removed by  
Sewer Line

Fd  
81.24  
Fd

Fd sh  
53.34

Fd. sh  
24.24

8-5-96  
PT. Removed by  
Sewer Line  
THESE TIES DIDN'T  
CROSS

P.K. & WASHER ATOP SAME  
ATOP P.K.

.24

HOUGHTON ST

55.80

65.47

2 STORY RES  
# 528

TOP 2ND BLOCK

PERSONNEL TITLE PERSONNEL TITLE

COUNTY OTTAWA

DRAWN 4/24/89

RONIN

DATE 4/20/89

RIPPLE

S. R. #19

WEATHER SUNNY

GEYMAN

SEC. OAK HARBOR

TEMP. 63°

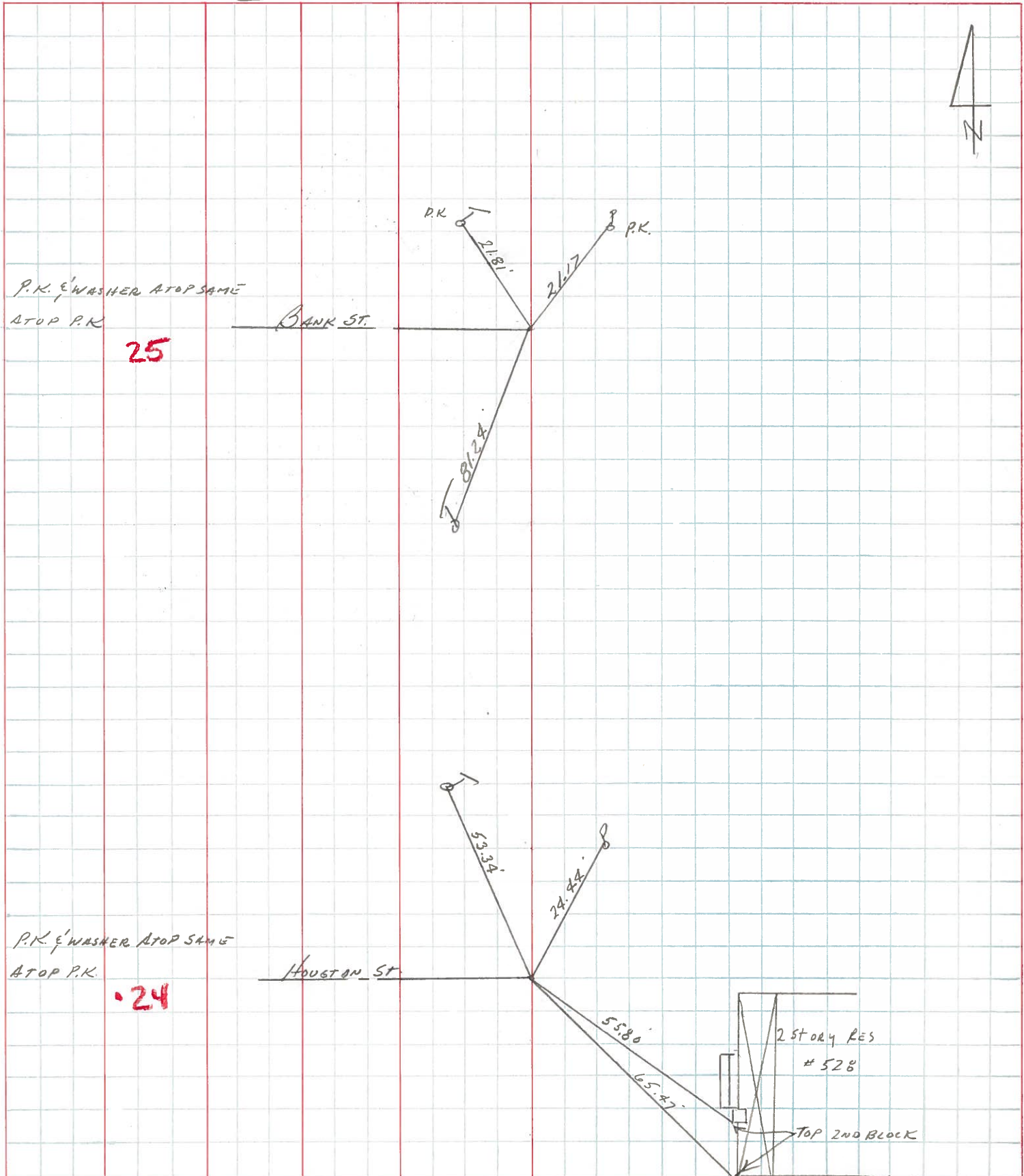
DESCRIPTION TIES INTERSECTING STREETS - SET BY OTHERS

JOB NO.

LEFT

CENTER LINE

RIGHT



PERSONNEL TITLE PERSONNEL TITLE

COUNTY Ottawa DATE 4-25-78

S. R. 19 WEATHER Fair - Windy

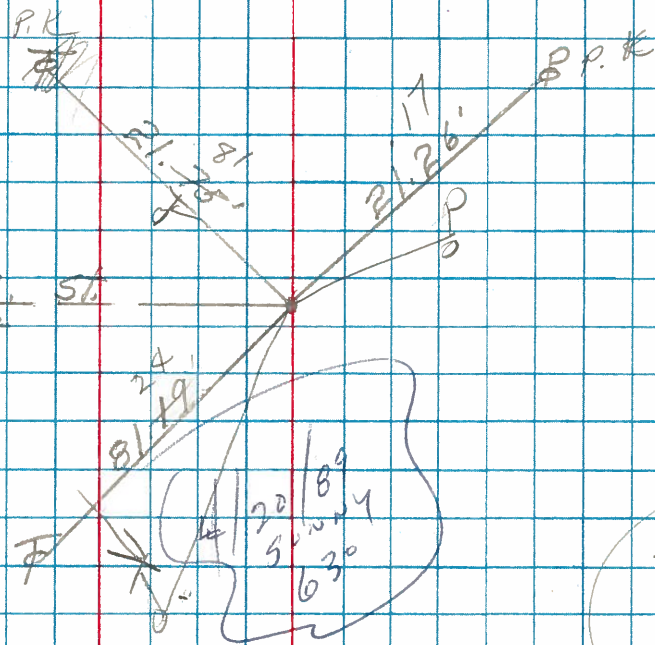
SEC. 32 E 33 TEMP. 50°

DESCRIPTION Oak Harbor LEFT CENTER LINE RIGHT JOB NO.

Reset P.K. & Washer  
6/6/79 70°  
1 1/2" & PVT

Fd. P.K. Nail  
25

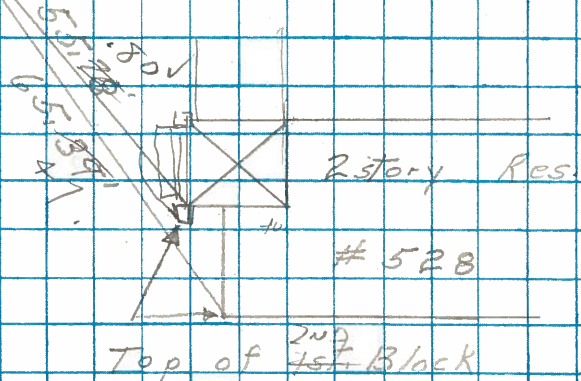
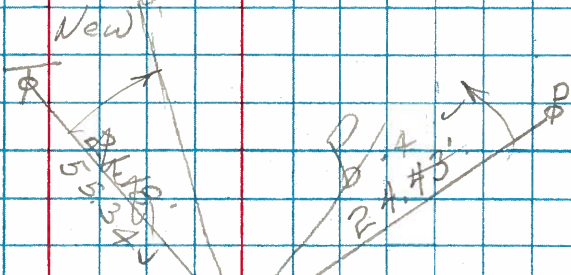
Bank St.  
West



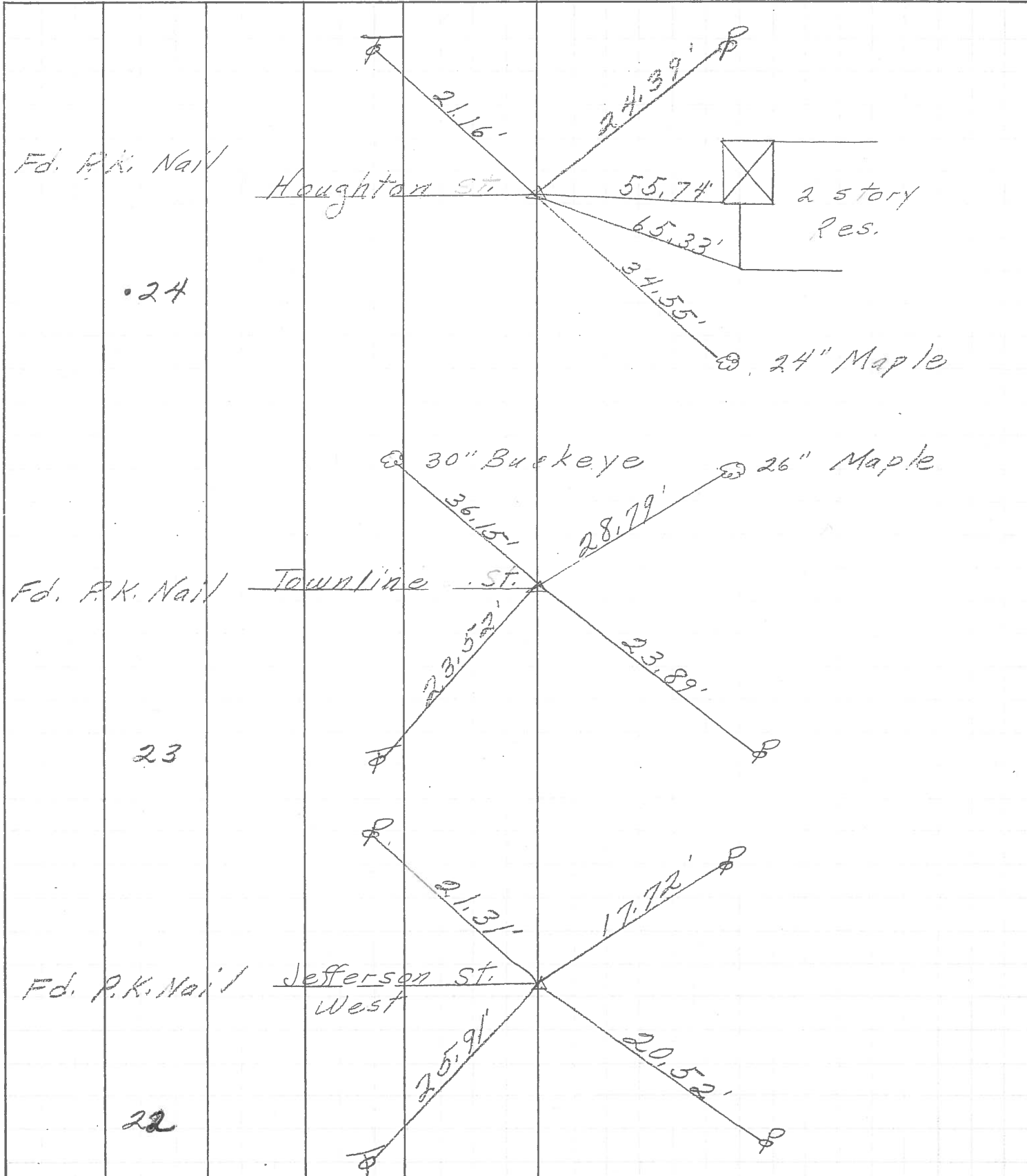
Reset P.K. & Washer  
6/6/79 70°

Fd. P.K. Nail  
24

Houghton St.  
West



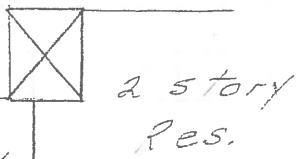
PERSONNEL	TITLE	PERSONNEL	TITLE	COUNTY	DATE
				Ottawa	5-4-71
				S. R. 19	WEATHER
				SEC. 32E 33	TEMP.
DESCRIPTION <u>Oak Harbor</u>				JOB NO.	
LEFT		CENTER LINE		RIGHT	



Fd. P.K. Nail

•24

Houghton St.



2 story Res.

24" Maple

30" Buckeye

26" Maple

Fd. P.K. Nail

23

Townline St.



Fd. P.K. Nail

22

Jefferson St. West

PERSONNEL	TITLE	PERSONNEL	TITLE	COUNTY	<u>Ottawa</u>	DATE	<u>5-13-68</u>	
<u>Schneider</u>				S. R.	<u>19</u>	WEATHER	<u>Fair</u>	
<u>Mosser</u>				SEC.	<u>Oak Harbor</u>	TEMP.	<u>65°</u>	
<u>Barbour</u>								
<u>Redding</u>								
DESCRIPTION	<u>Ties for Control Points</u>						JOB NO.	

