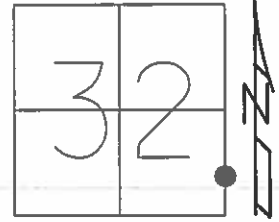


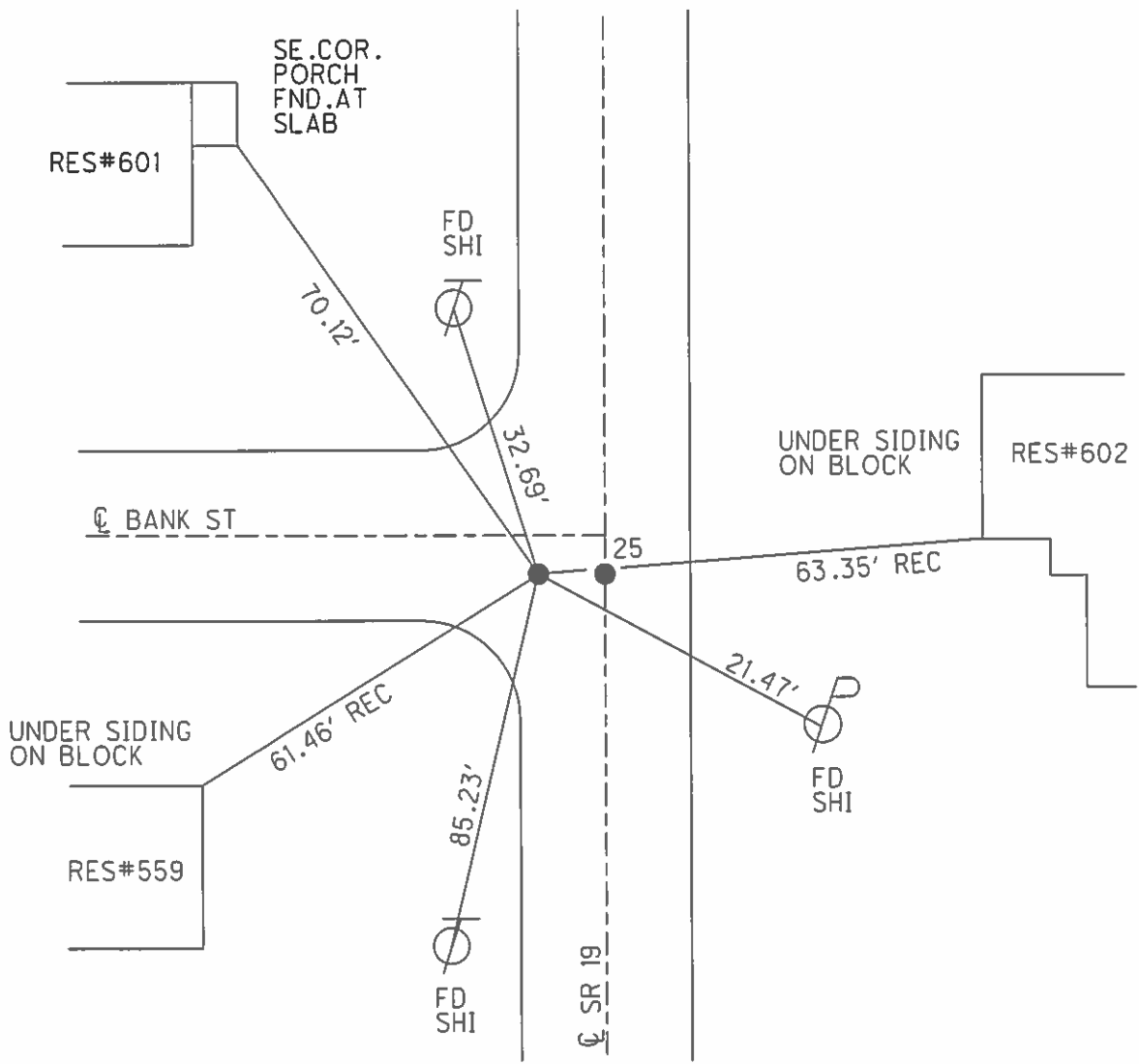
O.D.O.T. DISTRICT 2 SURVEY OFFICE (USE ONLY)

PERSONNEL \_\_\_\_\_ REFERENCE NO. 25 A SHEET 11 OF 29  
 NOTES HUSS DATE 10/28/09 ROUTE SR 19  
 H.C. CANTERBURY WEATHER FAIR COUNTY OTTAWA  
 R.C. GOLDBERG TEMP. 50° TOWNSHIP SALEM  
 SECTION 32  
 T 7 N R 15 E

TYPE MONUMENT P.K./WASHER  
 ON SURFACE - ~~BELOW~~ ON \_\_\_\_\_  
 LEFT - ☉ PAV'T - ~~RIGHT~~ ± 1.0'  
 \_\_\_\_\_ TO \_\_\_\_\_ EDGE PAVEMENT  
 S.L.M. 224+.03.87



GRID: NORTHING: 675563.895 EASTING: 1791855.561

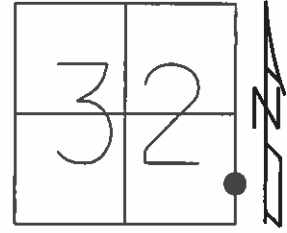


O.D.O.T. DISTRICT 2 SURVEY OFFICE (USE ONLY)

PERSONNEL \_\_\_\_\_ REFERENCE NO. 25 A SHEET 15 OF 33

NOTES HUSS DATE 10/28/09 ROUTE SR 19  
 H.C. CANTERBURY WEATHER FAIR COUNTY OTTAWA  
 R.C. GOLDBERG TEMP. 50° TOWNSHIP SALEM  
 SECTION 32  
 T 7 N R 15 E

TYPE MONUMENT P.K./WASHER  
 ON SURFACE - ~~BELOW~~ ON \_\_\_\_\_  
 LEFT - ☉ PAV'T - ~~RIGHT~~ ± 1.0'  
 - TO - EDGE PAVEMENT  
 S.L.M. 224+.03.87



Grid: Northing: 675563.895 Easting: 1791855.561

