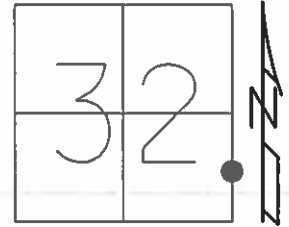


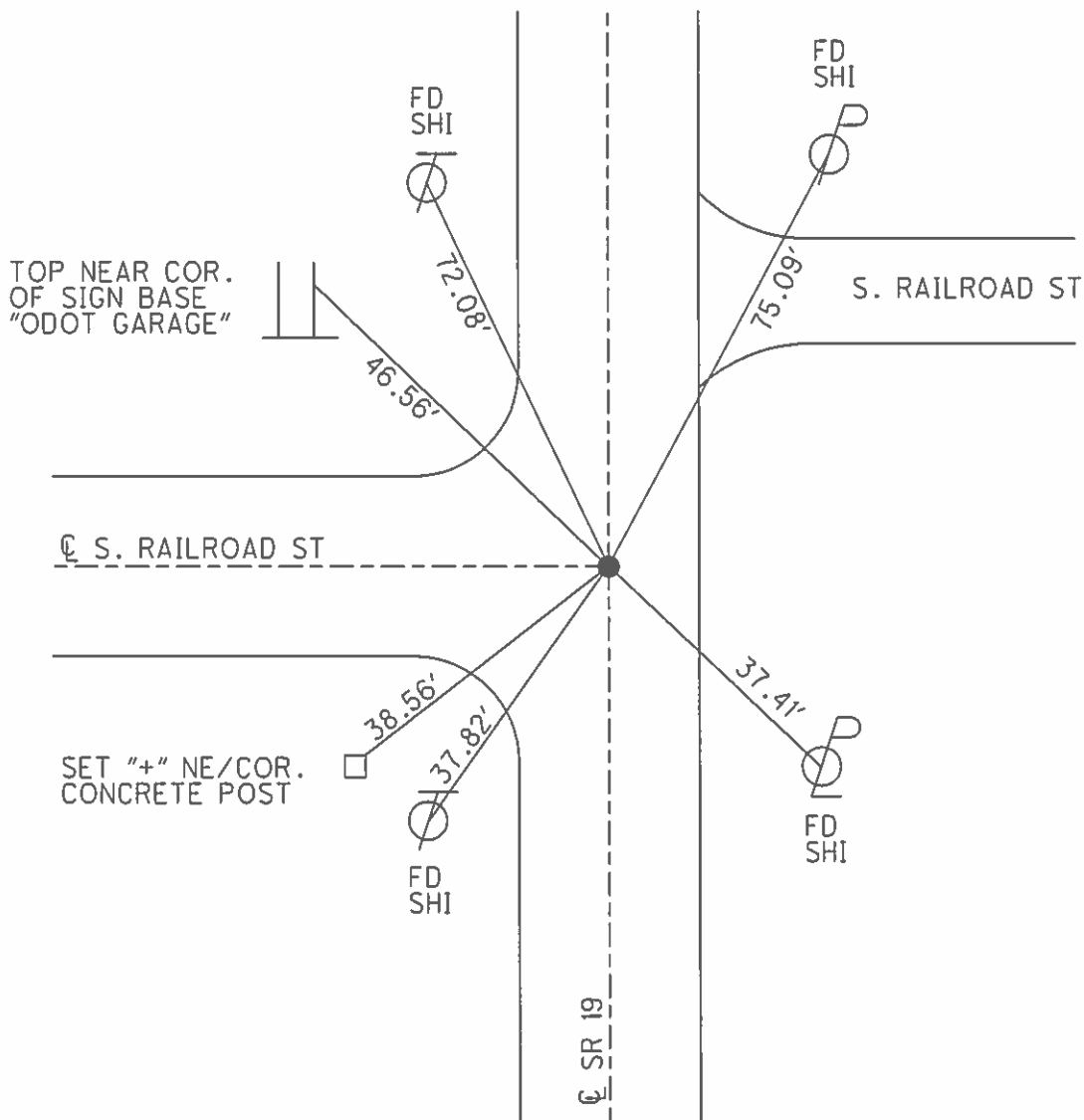
O.D.O.T. DISTRICT 2 SURVEY OFFICE (USE ONLY)

PERSONNEL _____ REFERENCE NO. 25 B SHEET 12 OF 29
 NOTES HUSS DATE 10/28/09 ROUTE SR 19
 H.C. CANTERBURY WEATHER FAIR COUNTY OTTAWA
 R.C. GOLDBERG TEMP. 50° TOWNSHIP SALEM
 _____ SECTION 32
 _____ T 7 N R 15 E

TYPE MONUMENT MAG/WASHER
 ON SURFACE - ~~BELOW~~ ON
 LEFT - ☉ PAV'T - RIGHT ON
12' TO RT EDGE PAVEMENT
 S.L.M. 226+29.05



GRID: NORTHING: 675788.97 EASTING: 1791855.639



O.D.O.T. DISTRICT 2 SURVEY OFFICE (USE ONLY)

PERSONNEL

REFERENCE NO.

25 B

SHEET

16

OF 33

NOTES

HUSS

DATE

10/28/09

ROUTE

SR 19

H.C.

CANTERBURY

WEATHER

FAIR

COUNTY

OTTAWA

R.C.

GOLDBERG

TEMP.

50°

TOWNSHIP

SALEM

SECTION

32

T 7 N

R 15 E

TYPE MONUMENT MAG/WASHER

ON SURFACE - ~~BELOW~~ ON

LEFT - ☉ PAV'T - RIGHT ON

12' TO RT EDGE PAVEMENT

S.L.M. 226+29.05

Grid: Northing: 675788.97

Easting: 1791855.639

