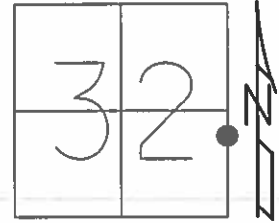


O.D.O.T. DISTRICT 2 SURVEY OFFICE (USE ONLY)

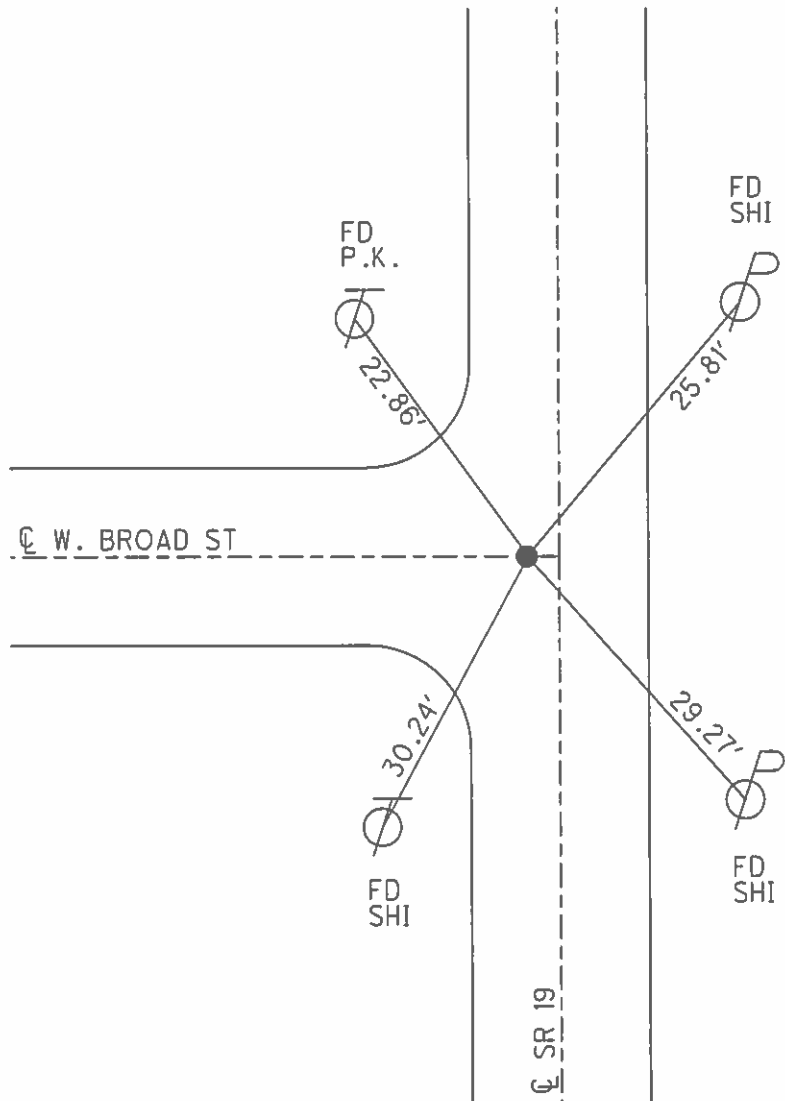
PERSONNEL \_\_\_\_\_ REFERENCE NO. 25 D SHEET 14 OF 29  
 NOTES HUSS DATE 6/11/08 ROUTE SR 19  
 H.C. CANTERBURY WEATHER CLDY/WINDY COUNTY OTTAWA  
 R.C. MOSER TEMP. 59° TOWNSHIP SALEM  
 \_\_\_\_\_ SECTION 32  
 \_\_\_\_\_ T 7 N R 15 E

TYPE MONUMENT P.K.NAIL  
 ON SURFACE - ~~BELOW~~ ON \_\_\_\_\_  
 LEFT - ☉ PAV'T - ~~RIGHT~~ 2.0'  
12.3' TO RT EDGE PAVEMENT  
 S.L.M. 232+32



GRID: NORTHING: 676433.871 EASTING: 1791845.278

NOTE:  
POINT SET  
BY OTHERS



O.D.O.T. DISTRICT 2 SURVEY OFFICE (USE ONLY)

PERSONNEL \_\_\_\_\_ REFERENCE NO. 25 D SHEET 18 OF 33  
 NOTES HUSS DATE 6/11/08 ROUTE SR 19  
 H.C. CANTERBURY WEATHER CLDY/WINDY COUNTY OTTAWA  
 R.C. MOSER TEMP. 59° TOWNSHIP SALEM  
 \_\_\_\_\_ SECTION 32  
 \_\_\_\_\_ T 7 N R 15 E

TYPE MONUMENT P.K.NAIL, (SET BY OTHERS)

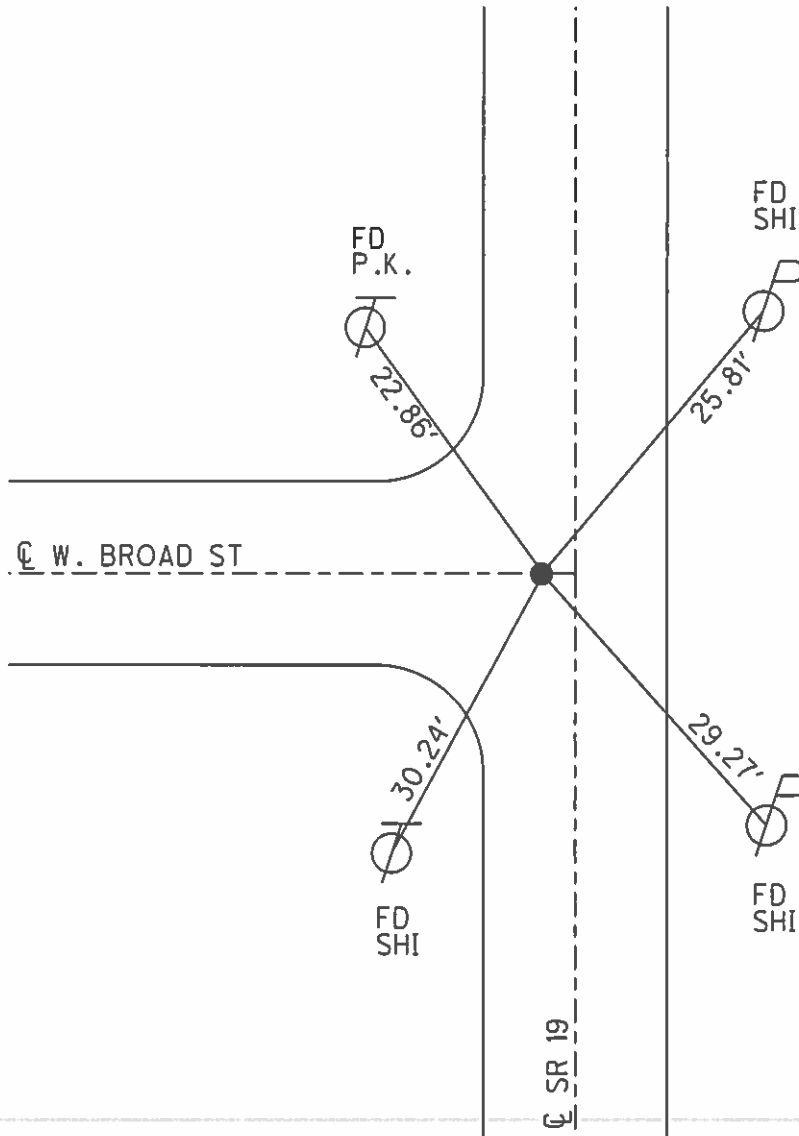
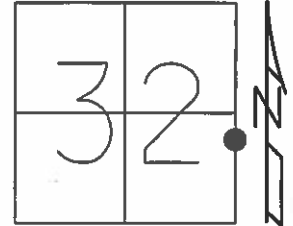
ON SURFACE - ~~BELOW~~ ON \_\_\_\_\_

LEFT - Q PAV'T - ~~RIGHT~~ 2.0'

12.3' TO RT EDGE PAVEMENT

S.L.M. 232+32

Grid: Northing: 676433.871 Easting: 1791845.278



PERSONNEL TITLE PERSONNEL TITLE

COUNTY Ottawa

DATE 4-25-78

S. R. 19

WEATHER Fair-Wind

SEC. 32-33

TEMP. 50°

DESCRIPTION Oak Harbor

JOB NO.

LEFT

CENTER LINE

RIGHT



Lake St.  
West

Both have county ties  
No point in permit.

**.25D**

Broad St.  
West

Reset P.K. & Washer  
6/6/79 70°

South Track

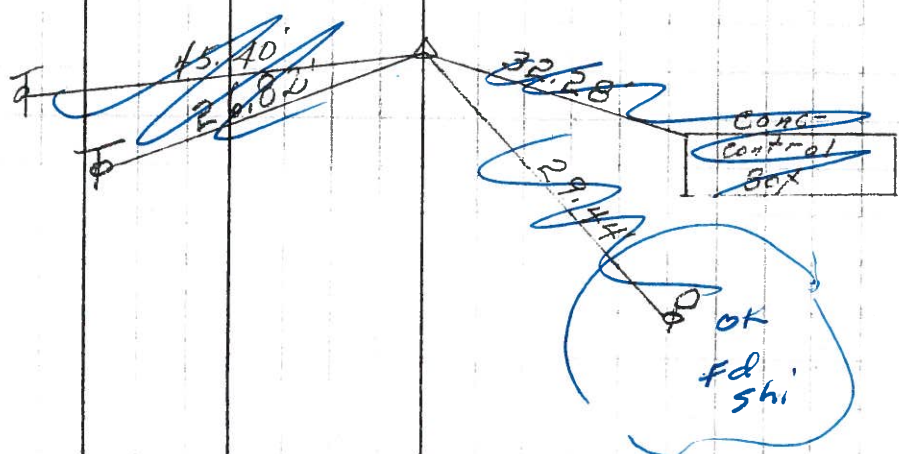
N.Y.C. R.R.

P.I.

225+53.20

P.K. Nail

**25C**



PERSONNEL TITLE PERSONNEL TITLE

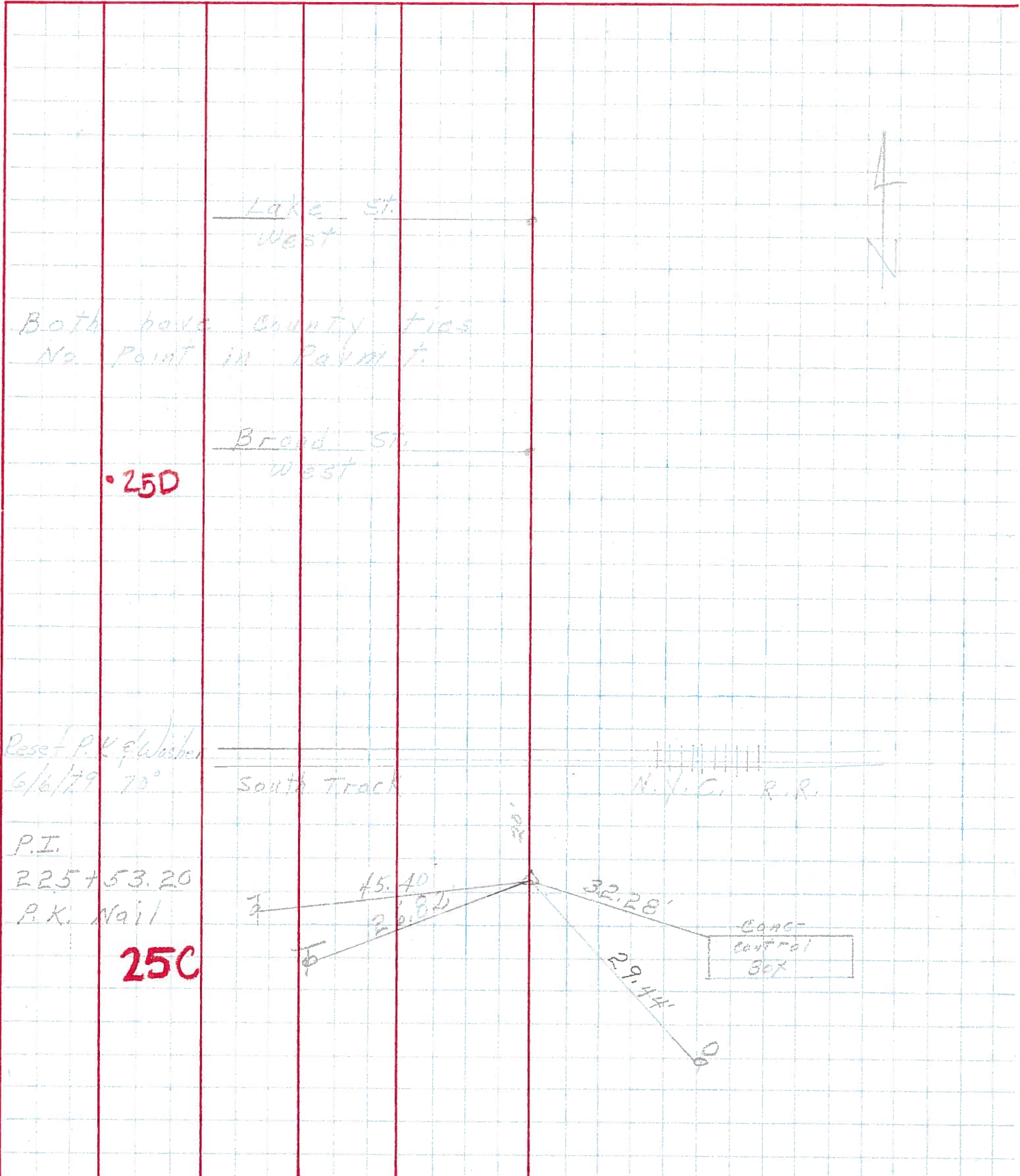
COUNTY Ottawa DATE 4-25-78

S. R. 19 WEATHER Fair-Windy

SEC. 32-33 TEMP. 50°

DESCRIPTION Oak Harbor JOB NO.

LEFT CENTER LINE RIGHT



Both have County ties  
No point in permit.

•25D

Reset P.K. & Washer  
6/6/79 72°

P.I.  
225+53.20  
P.K. Nail

25C

CONC CONTROL BOX