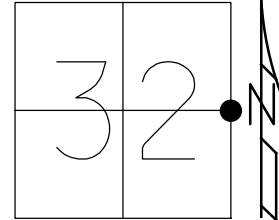


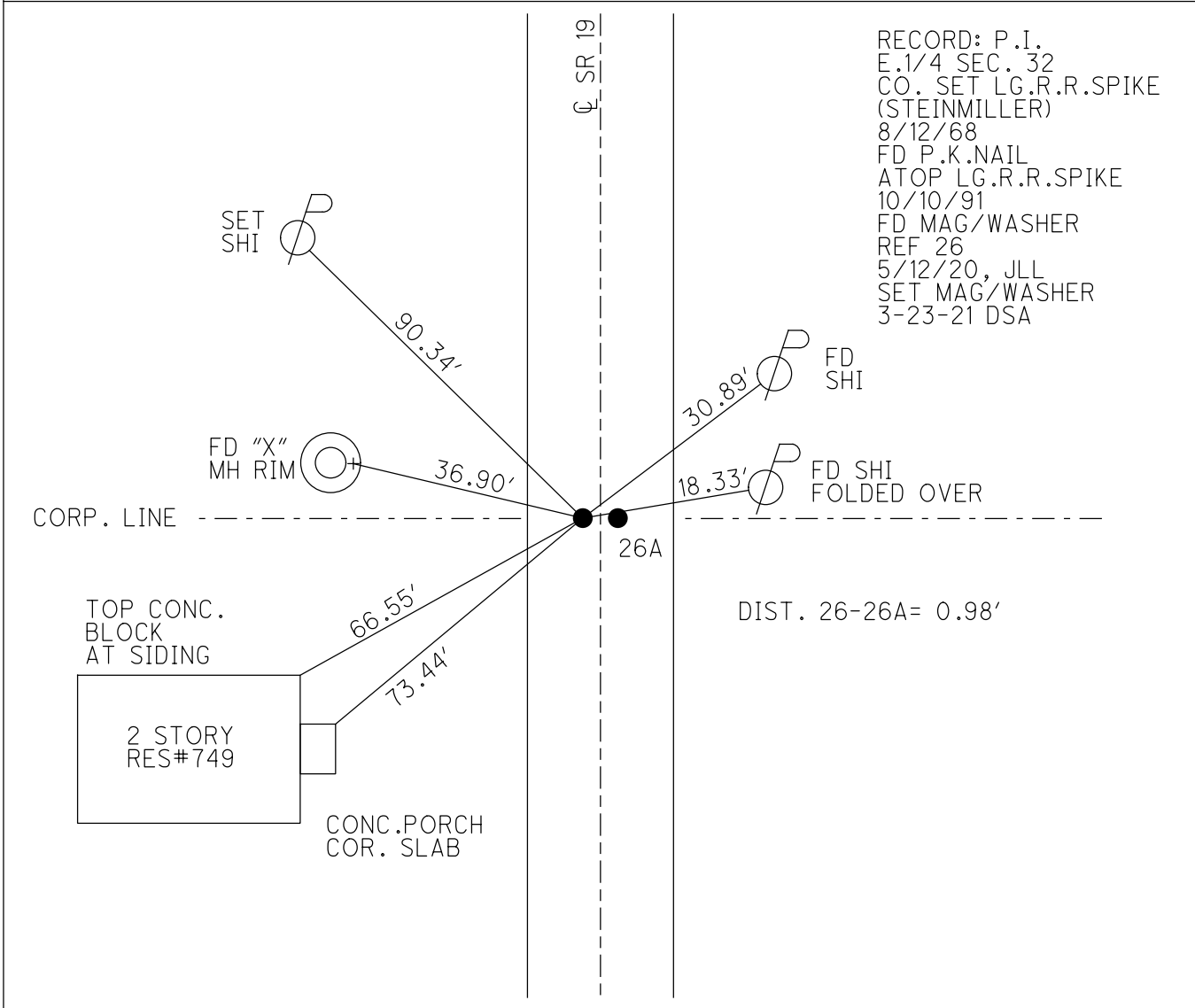
O.D.O.T. DISTRICT 2 SURVEY OFFICE (USE ONLY)

PERSONNEL \_\_\_\_\_ REFERENCE NO. 26 SHEET 15 OF 29  
 NOTES AUBLE DATE 5/12/20 ROUTE SR 19  
 H.C. LEU WEATHER SUNNY/WINDY COUNTY OTTAWA  
 R.C. BALBAUGH TEMP. 48°F TOWNSHIP SALEM  
 DWG BY NIESE PID 107903 SECTION 32  
 T 7 N R 15 E

TYPE MONUMENT MAG/WASHER  
 ON SURFACE - ~~BELOW~~ ON  
 OFFSET 12.0' Q PAVEMENT 1.0' LT : ~~RT~~  
12.0' TO RT EDGE PAVEMENT  
 STATION: 240+27



HORZ. DATUM: NAD83(2011) GEOID: NAVD88 2012A  
 GRID: NORTHING: 677173.329 EASTING: 1791835.324



RECORD: P.I.  
 E.1/4 SEC. 32  
 CO. SET LG.R.R.SPIKE  
 (STEINMILLER)  
 8/12/68  
 FD P.K.NAIL  
 ATOP LG.R.R.SPIKE  
 10/10/91  
 FD MAG/WASHER  
 REF 26  
 5/12/20, JLL  
 SET MAG/WASHER  
 3-23-21 DSA

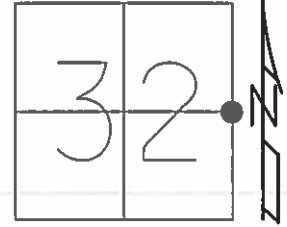
DIST. 26-26A = 0.98'

O.D.O.T. DISTRICT 2 SURVEY OFFICE (USE ONLY)

PERSONNEL \_\_\_\_\_ REFERENCE NO. 26 SHEET 15 OF 29

NOTES HUSS DATE 6/17/08 ROUTE SR 19  
 H.C. CANTERBURY WEATHER CLDY/WINDY COUNTY OTTAWA  
 R.C. MOSER TEMP. 59° TOWNSHIP SALEM  
 \_\_\_\_\_ SECTION 32  
 \_\_\_\_\_ T 7 N R 15 E

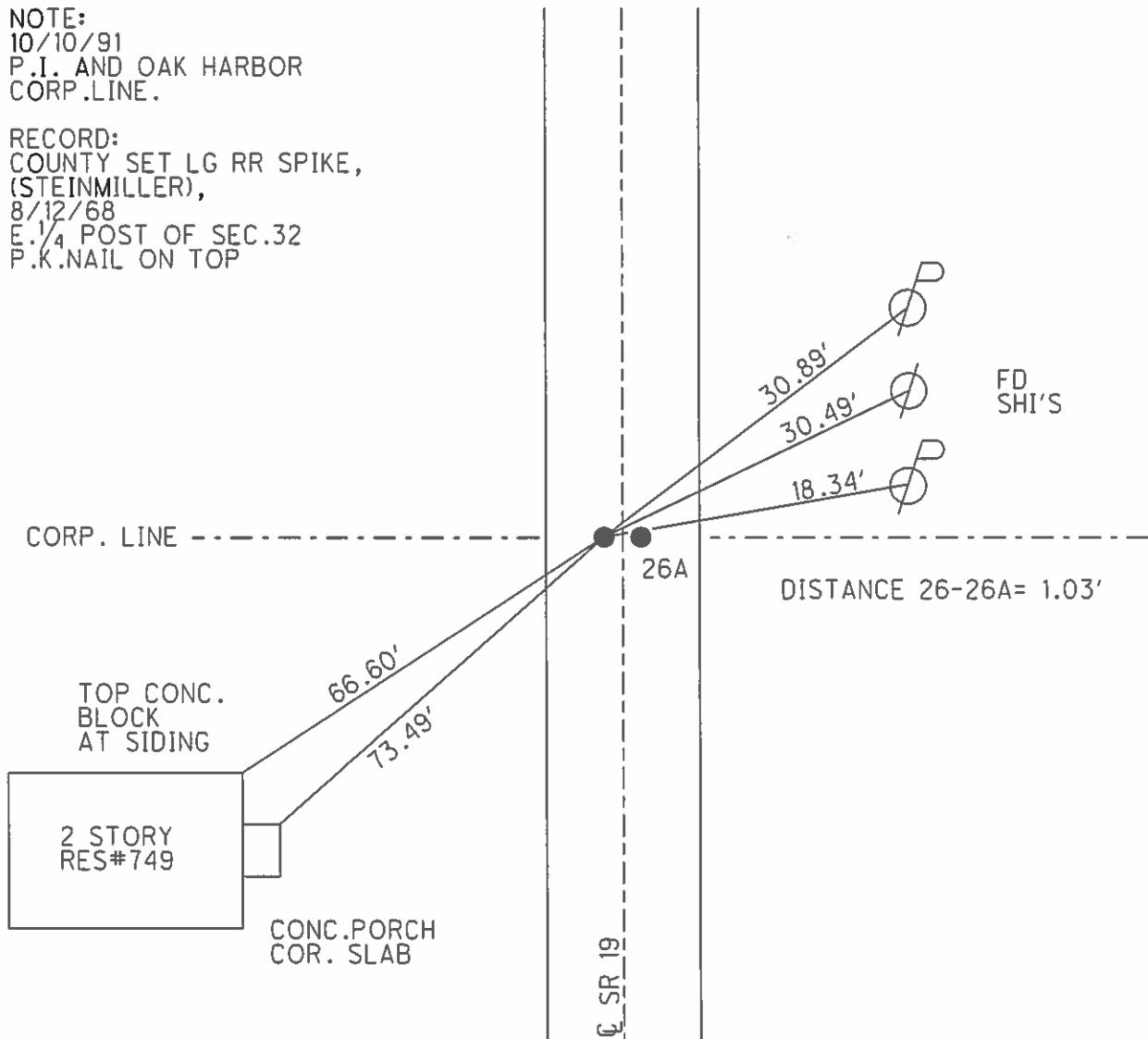
TYPE MONUMENT SM RR SPIKE  
 ON SURFACE - ~~BELOW~~ ON \_\_\_\_\_  
 LEFT - ℄ PAV'T - ~~RIGHT~~ 0.5'  
11.52' TO RT EDGE PAVEMENT  
 S.L.M. 240+27



GRID: NORTHING: 677173.353 EASTING: 1791835.275

NOTE:  
 10/10/91  
 P.I. AND OAK HARBOR  
 CORP.LINE.

RECORD:  
 COUNTY SET LG RR SPIKE,  
 (STEINMILLER),  
 8/12/68  
 E. 1/4 POST OF SEC.32  
 P.K.NAIL ON TOP

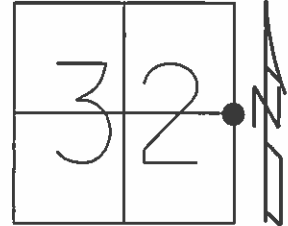


O.D.O.T. DISTRICT 2 SURVEY OFFICE (USE ONLY)

PERSONNEL \_\_\_\_\_ REFERENCE NO. 26 SHEET 19 OF 33

NOTES HUSS DATE 6/17/08 ROUTE SR 19  
 H.C. CANTERBURY WEATHER CLDY/WINDY COUNTY OTTAWA  
 R.C. MOSER TEMP. 59° TOWNSHIP SALEM  
 \_\_\_\_\_ SECTION 32  
 \_\_\_\_\_ T 7 N R 15 E

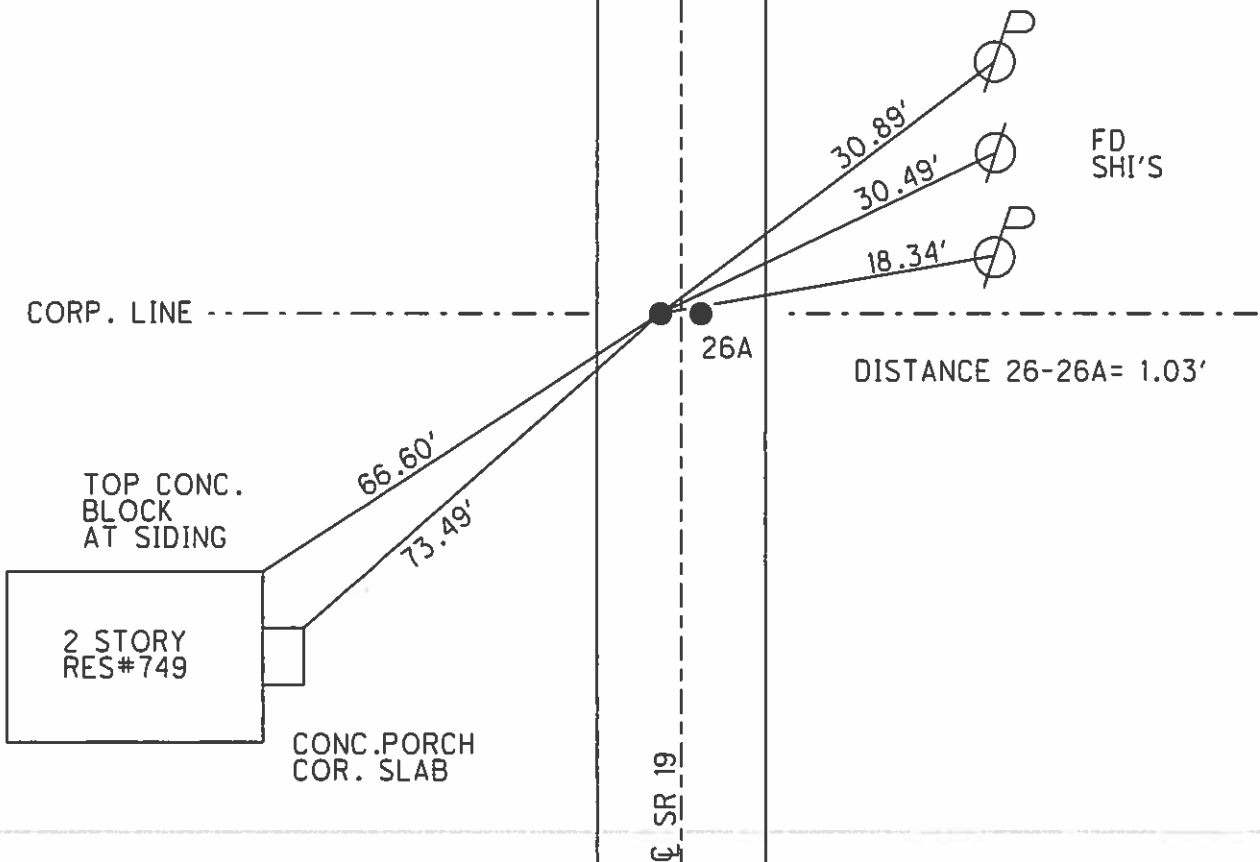
TYPE MONUMENT SM.R.R.SPIKE  
 ON SURFACE - ~~BELOW~~ ON  
 LEFT - ☉ PAV'T - ~~RIGHT~~ 0.5'  
11.52' TO RT EDGE PAVEMENT  
 S.L.M. 240+27



Grid: Northing: 677173.353 Easting: 1791835.275

NOTE: 10/10/91  
 P.I. AND OAK HARBOR  
 CORP.LINE.

COUNTY SET LG.R.R.SPIKE,  
 (STEINMILLER), 8/12/68  
 E. 1/4 POST OF SEC.32  
 P.K.NAIL ON TOP



# O.D.O.T. DISTRICT 2 SURVEY OFFICE

PERSONNEL \_\_\_\_\_

REFERENCE NO. 26

SHEET 1 OF 11

NOTES Cheney

H.C. BARBOUR

R.C. RIPPLE

DATE 10/10/91

WEATHER Sunny

TEMP. 60°

ROUTE SR# 19

COUNTY OTAWA

TOWNSHIP SALEM

SECTION 32 & 33

T. 7 N R. 15 E

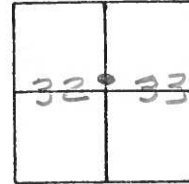
TYPE MONUMENT Set Two P.K. Nails

ON SURFACE - ~~BELOW~~ \_\_\_\_\_

LEFT - & PAW'T. - RIGHT 0.5'

8' & 9' TO RT. EDGE PAVEMENT

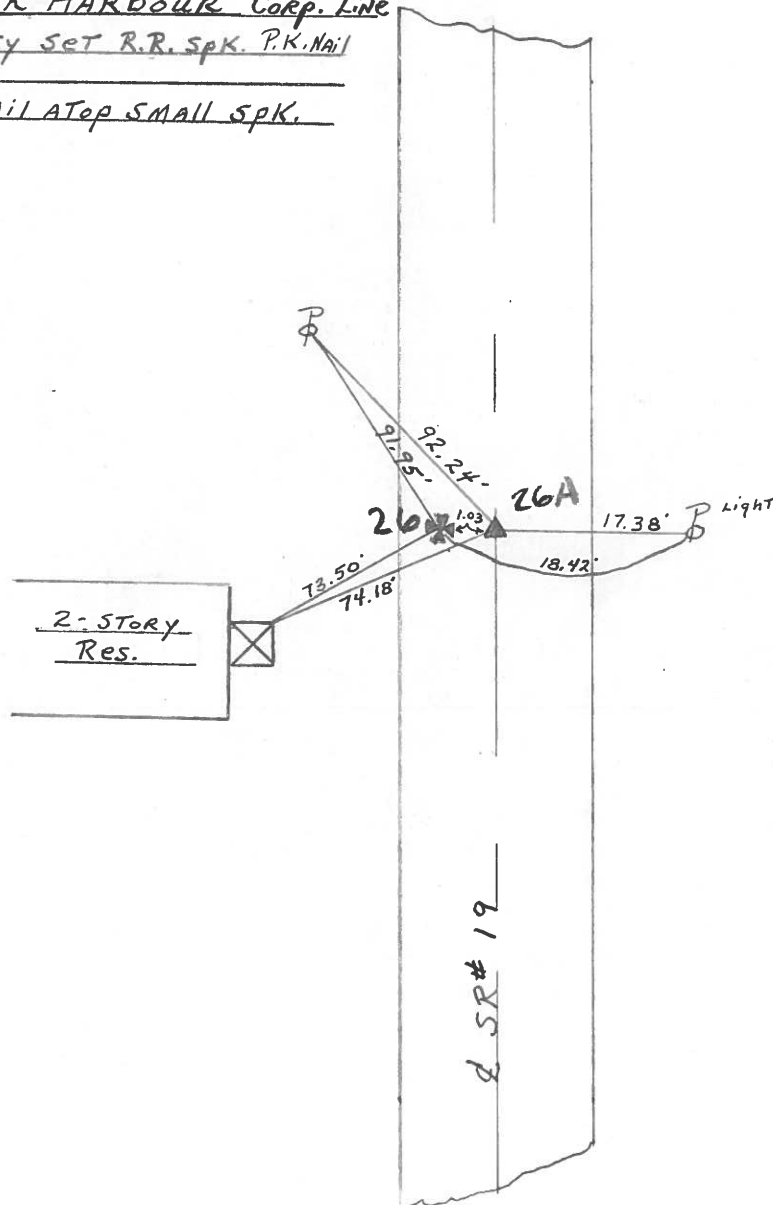
S.L.M. 240+27



P.I. & OAK HARBOUR Corp. Line

County Set R.R. Spk. P.K. Nail  
ON Top.

P.K. NAIL ATOP SMALL Spk.



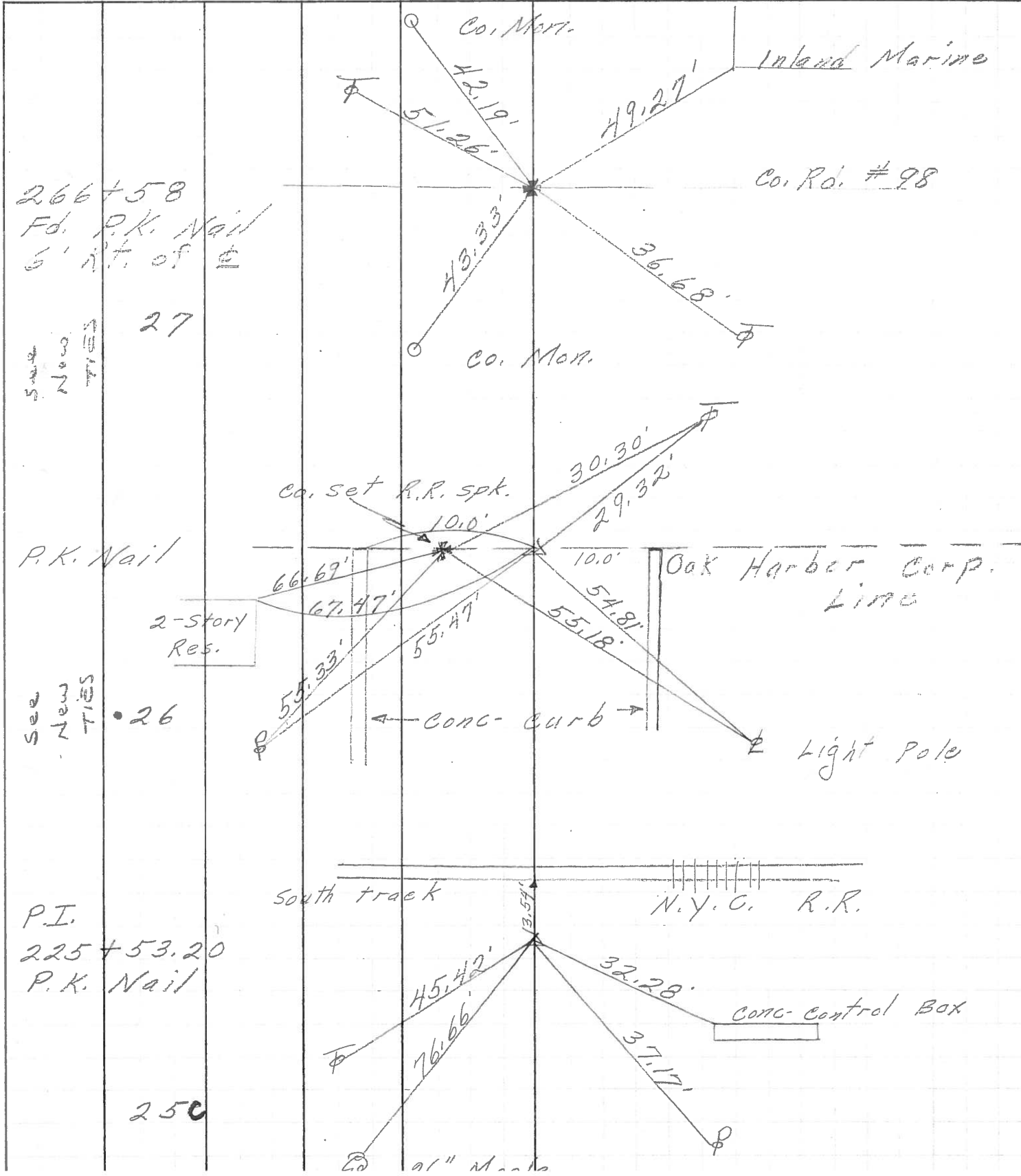
PERSONNEL TITLE PERSONNEL TITLE

COUNTY Ottawa DATE 5-4-71

S. R. 19 WEATHER \_\_\_\_\_

SEC. 32633 TEMP. \_\_\_\_\_

DESCRIPTION Oak Harbor E 1 point North JOB NO. \_\_\_\_\_



266+58  
Fd. P.K. Nail  
6' n't. of E

See  
New  
TIES

27

P.K. Nail

2-story  
Res.

See  
New  
TIES

26

P.I.  
225+53.20  
P.K. Nail

250

Co. Mon.

Inland Marine

Co. Rd. #98

Co. Mon.

Co. set R.R. spt.

Oak Harbor Corp.  
Line

← Conc. curb →

Light Pole

South track

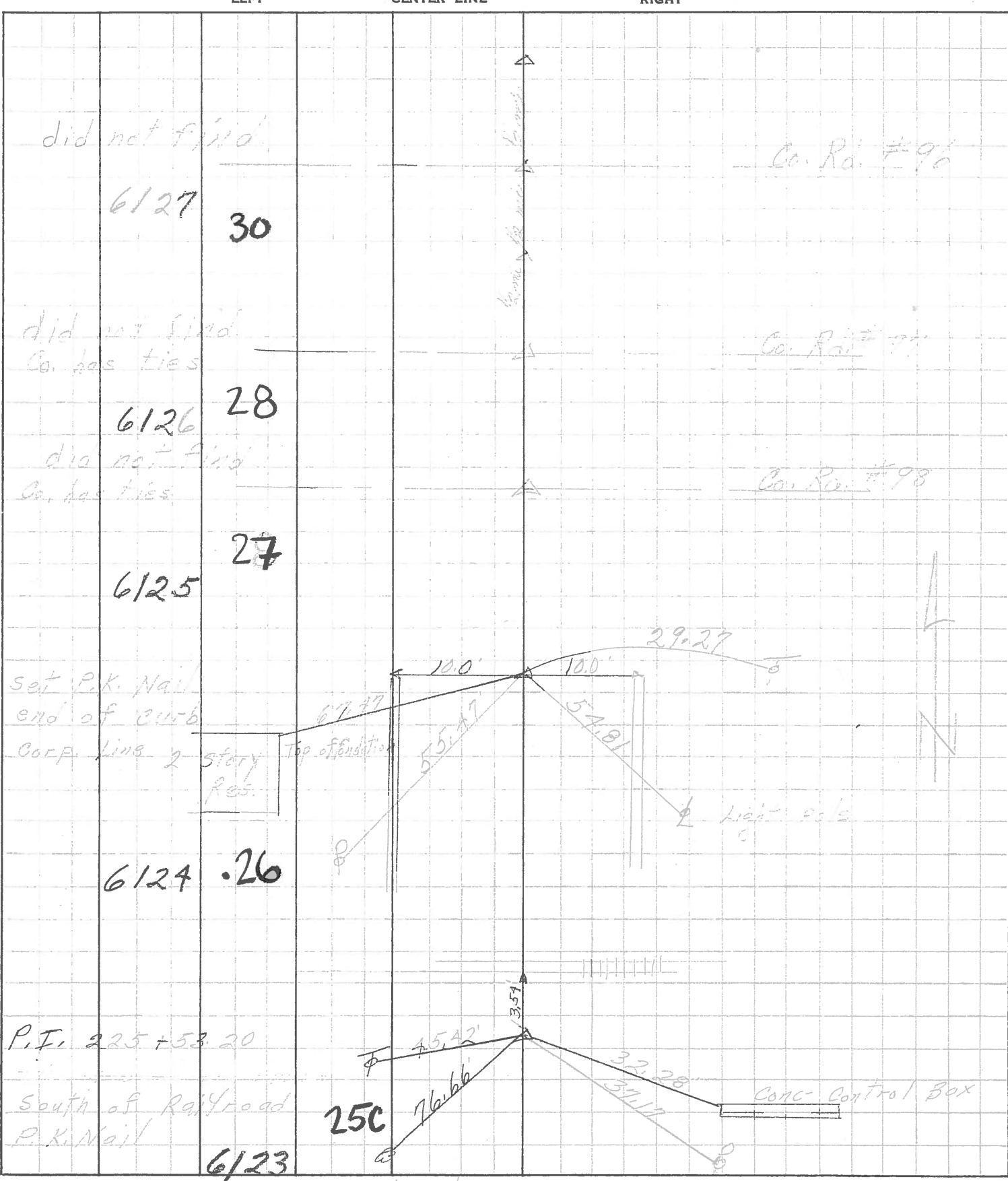
N.Y.C. R.R.

Conc. Control Box

91" Mark

PERSONNEL	TITLE	PERSONNEL	TITLE	COUNTY	DATE	S. R.	WEATHER	SEC.	TEMP.
Schneider				Ottawa	5-13-68	19	Fair	Oak Harbor North	65°
Masser									
Barbour									
Redding									

DESCRIPTION *Ties for Control Points* JOB NO. \_\_\_\_\_



26" Maple