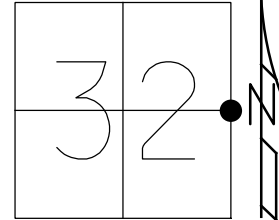


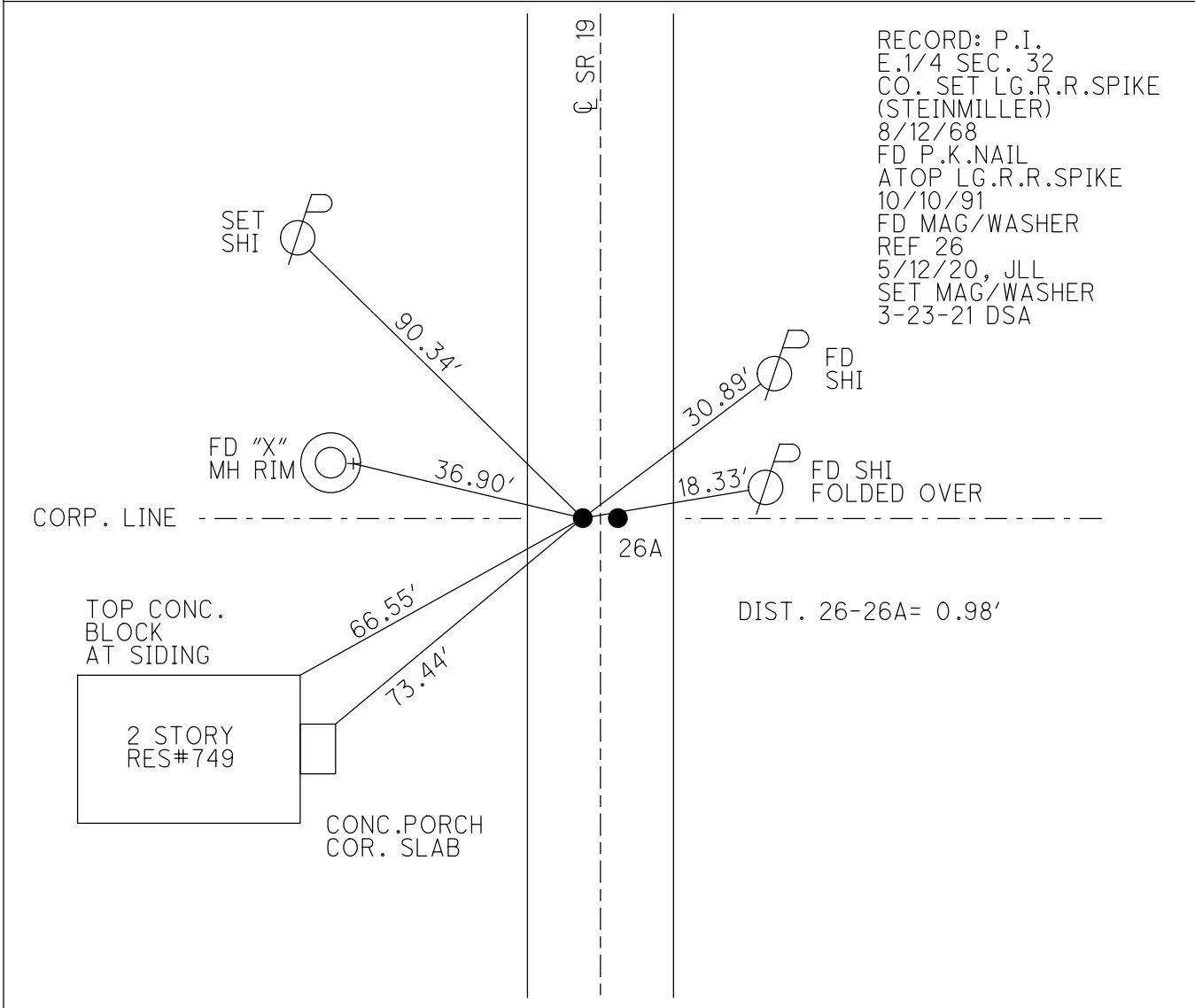
O.D.O.T. DISTRICT 2 SURVEY OFFICE (USE ONLY)

PERSONNEL \_\_\_\_\_ REFERENCE NO. 26 SHEET 15 OF 29  
 NOTES AUBLE DATE 5/12/20 ROUTE SR 19  
 H.C. LEU WEATHER SUNNY/WINDY COUNTY OTTAWA  
 R.C. BALBAUGH TEMP. 48°F TOWNSHIP SALEM  
 DWG BY NIESE PID 107903 SECTION 32  
 T 7 N R 15 E

TYPE MONUMENT MAG/WASHER  
 ON SURFACE - ~~BELOW~~ ON  
 OFFSET 12.0' TO RT EDGE PAVEMENT  
 STATION: 240+27



HORZ.DATUM: NAD83(2011) GEOID: NAVD88 2012A  
 GRID: NORTHING: 677173.329 EASTING: 1791835.324



RECORD: P.I.  
 E.1/4 SEC. 32  
 CO. SET LG.R.R.SPIKE  
 (STEINMILLER)  
 8/12/68  
 FD P.K.NAIL  
 ATOP LG.R.R.SPIKE  
 10/10/91  
 FD MAG/WASHER  
 REF 26  
 5/12/20, JLL  
 SET MAG/WASHER  
 3-23-21 DSA

DIST. 26-26A = 0.98'

O.D.O.T. DISTRICT 2 SURVEY OFFICE (USE ONLY)

PERSONNEL \_\_\_\_\_

REFERENCE NO. 26 A

SHEET 16 OF 29

NOTES AUBLE

DATE 5/12/20

ROUTE SR 19

H.C. LEU

WEATHER SUNNY/WINDY

COUNTY OTTAWA

R.C. BALBAUGH

TEMP. 48°F

TOWNSHIP SALEM

SECTION 32

DWG BY NIESE

PID 107903

T 7 N R 15 E

TYPE MONUMENT MAG/WASHER

ON SURFACE - ~~BELOW~~ ON

OFFSET 0 PAVEMENT ON ~~LT~~ : ~~RT~~

11.0' TO RT EDGE PAVEMENT

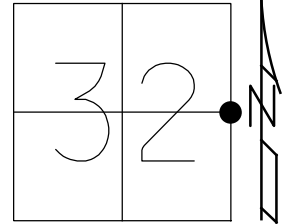
STATION: 240+27

HORZ.DATUM: NAD83(2011)

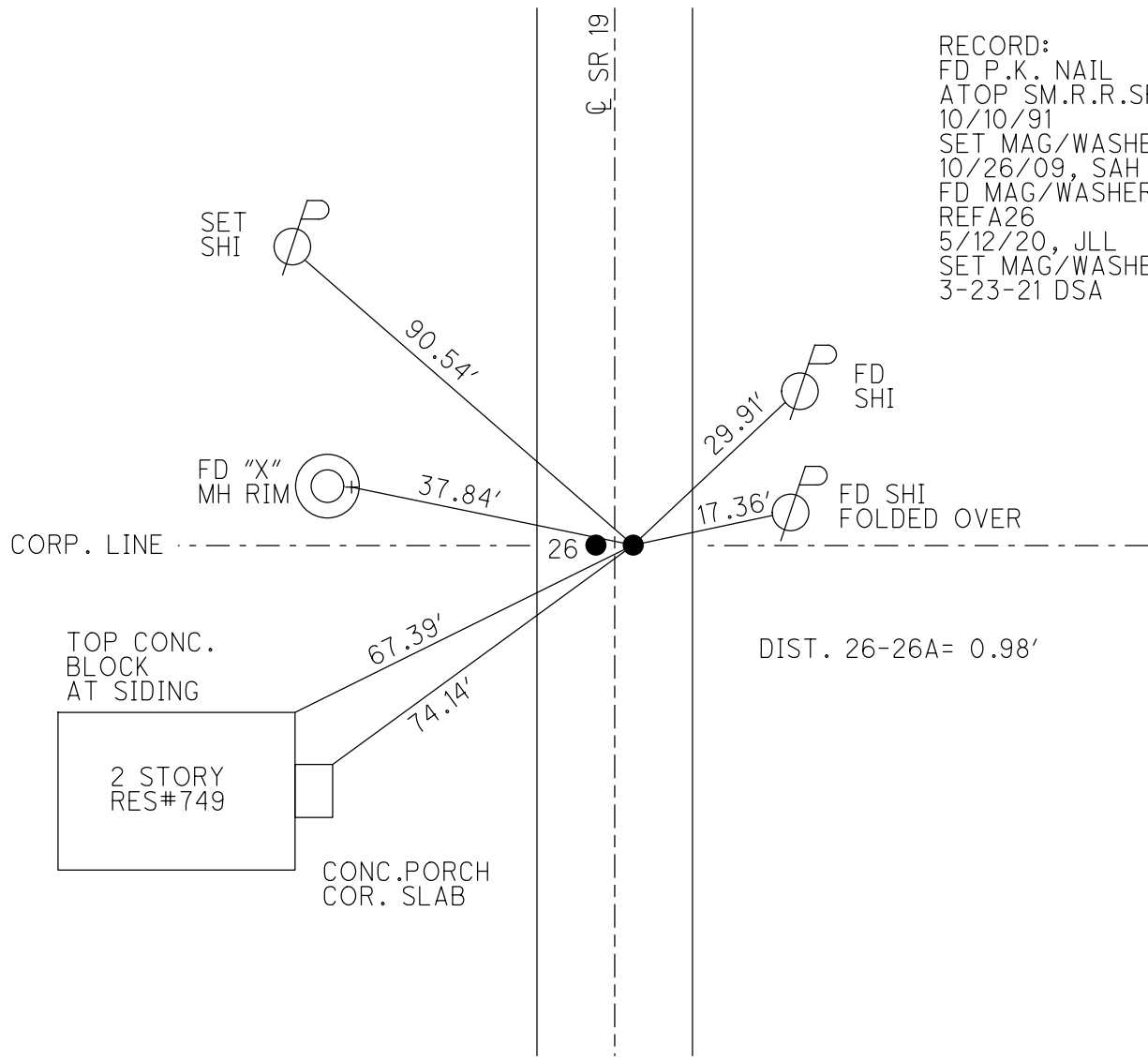
GEOID: NAVD88 2012A

GRID: NORTHING: 677173.391

EASTING: 1791836.327



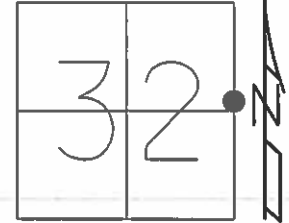
RECORD:  
 FD P.K. NAIL  
 ATOP SM.R.R.SPIKE  
 10/10/91  
 SET MAG/WASHER  
 10/26/09, SAH  
 FD MAG/WASHER  
 REFA26  
 5/12/20, JLL  
 SET MAG/WASHER  
 3-23-21 DSA



O.D.O.T. DISTRICT 2 SURVEY OFFICE (USE ONLY)

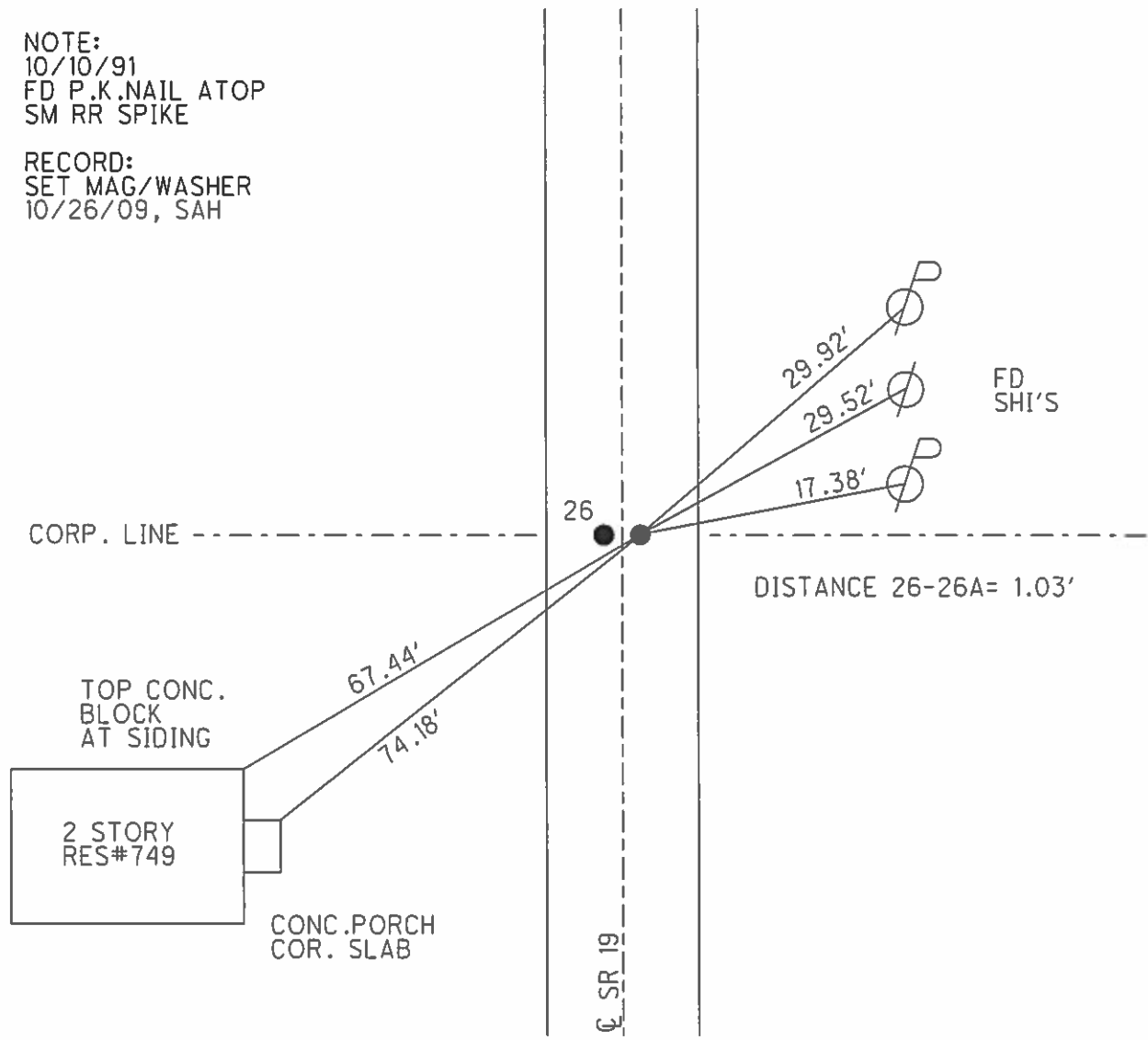
PERSONNEL \_\_\_\_\_ REFERENCE NO. 26 A SHEET 16 OF 29  
 NOTES HUSS DATE 6/17/08 ROUTE SR 19  
 H.C. CANTERBURY WEATHER CLDY/WINDY COUNTY OTTAWA  
 R.C. MOSER TEMP. 59° TOWNSHIP SALEM  
 \_\_\_\_\_ SECTION 32  
 \_\_\_\_\_ T 7 N R 15 E

TYPE MONUMENT MAG NAIL  
 ON SURFACE - ~~BELOW~~ ON \_\_\_\_\_  
~~LEFT~~ - CL PAV'T - RIGHT 0.5'  
10.55' TO RT EDGE PAVEMENT  
 S.L.M. 240+27



GRID: NORTHING: 677173.426 EASTING: 1791836.315

NOTE:  
 10/10/91  
 FD P.K.NAIL ATOP  
 SM RR SPIKE  
 RECORD:  
 SET MAG/WASHER  
 10/26/09, SAH

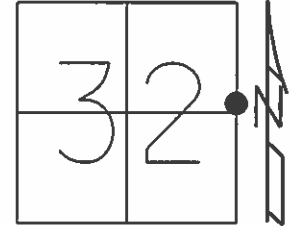


O.D.O.T. DISTRICT 2 SURVEY OFFICE (USE ONLY)

PERSONNEL \_\_\_\_\_ REFERENCE NO. 26 A SHEET 20 OF 33

NOTES HUSS DATE 6/17/08 ROUTE SR 19  
 H.C. CANTERBURY WEATHER CLDY/WINDY COUNTY OTTAWA  
 R.C. MOSER TEMP. 59° TOWNSHIP SALEM  
 SECTION 32  
 T 7 N R 15 E

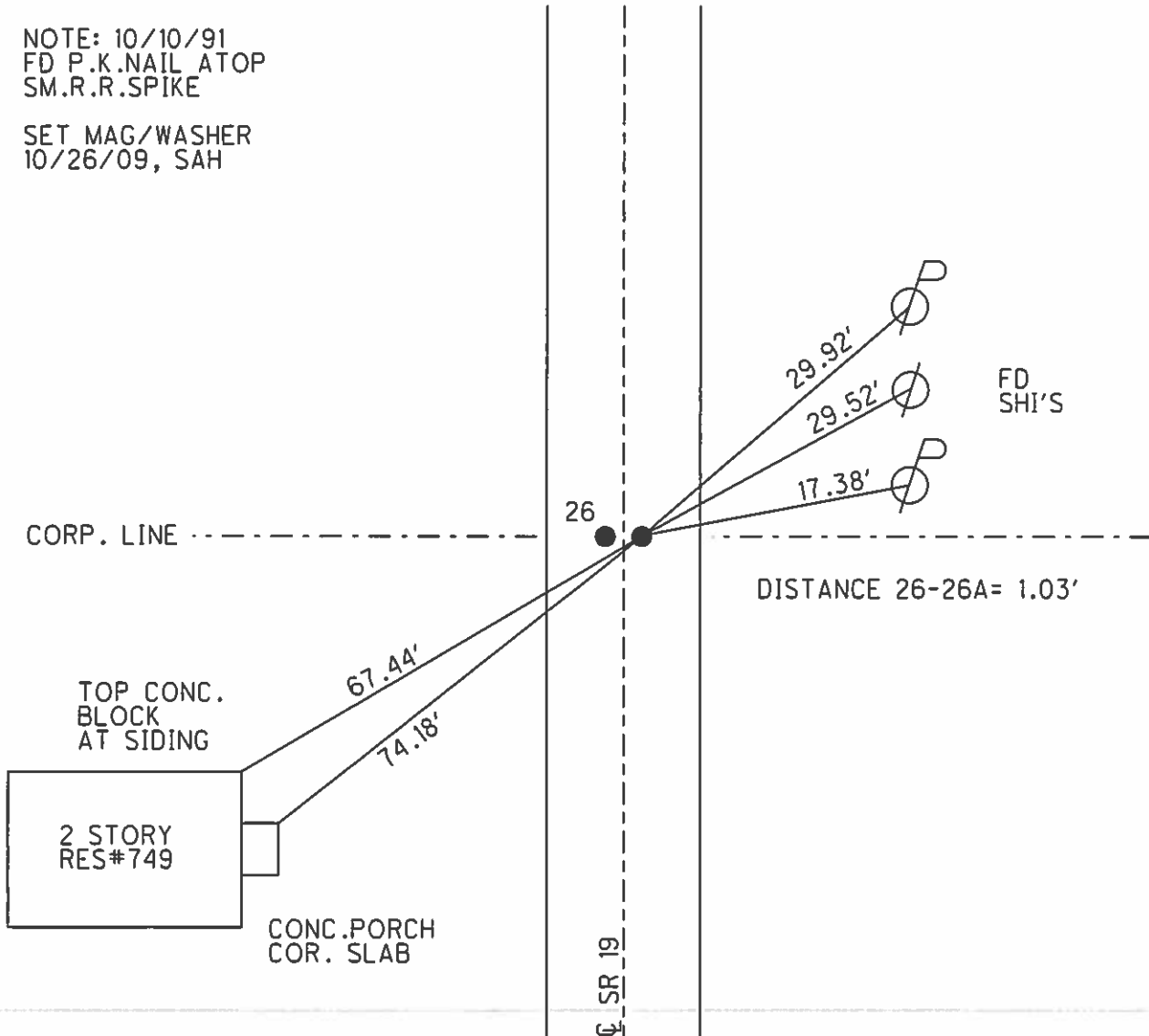
TYPE MONUMENT MAG NAIL  
 ON SURFACE - ~~BELOW~~ ON \_\_\_\_\_  
~~LEFT~~ - CL PAV'T - RIGHT 0.5'  
10.55' TO RT EDGE PAVEMENT  
 S.L.M. 240+27



Grid: Northing: 677173.426 Easting: 1791836.315

NOTE: 10/10/91  
 FD P.K.NAIL ATOP  
 SM.R.R.SPIKE

SET MAG/WASHER  
 10/26/09, SAH



# O.D.O.T. DISTRICT 2 SURVEY OFFICE

PERSONNEL \_\_\_\_\_

REFERENCE NO. 26

SHEET 1 OF 11

NOTES Cheney

H.C. BARBOUR

R.C. RIPPLE

DATE 10/10/91

WEATHER Sunny

TEMP. 60°

ROUTE SR# 19

COUNTY OTAWA

TOWNSHIP SALEM

SECTION 32 & 33

T. 7 N R. 15 E

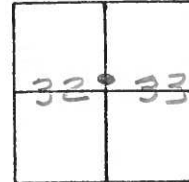
TYPE MONUMENT Set Two P.K. Nails

ON SURFACE - ~~BELOW~~ \_\_\_\_\_

LEFT - 0.5' PAV'T. - RIGHT \_\_\_\_\_

8' & 9' TO RT. EDGE PAVEMENT

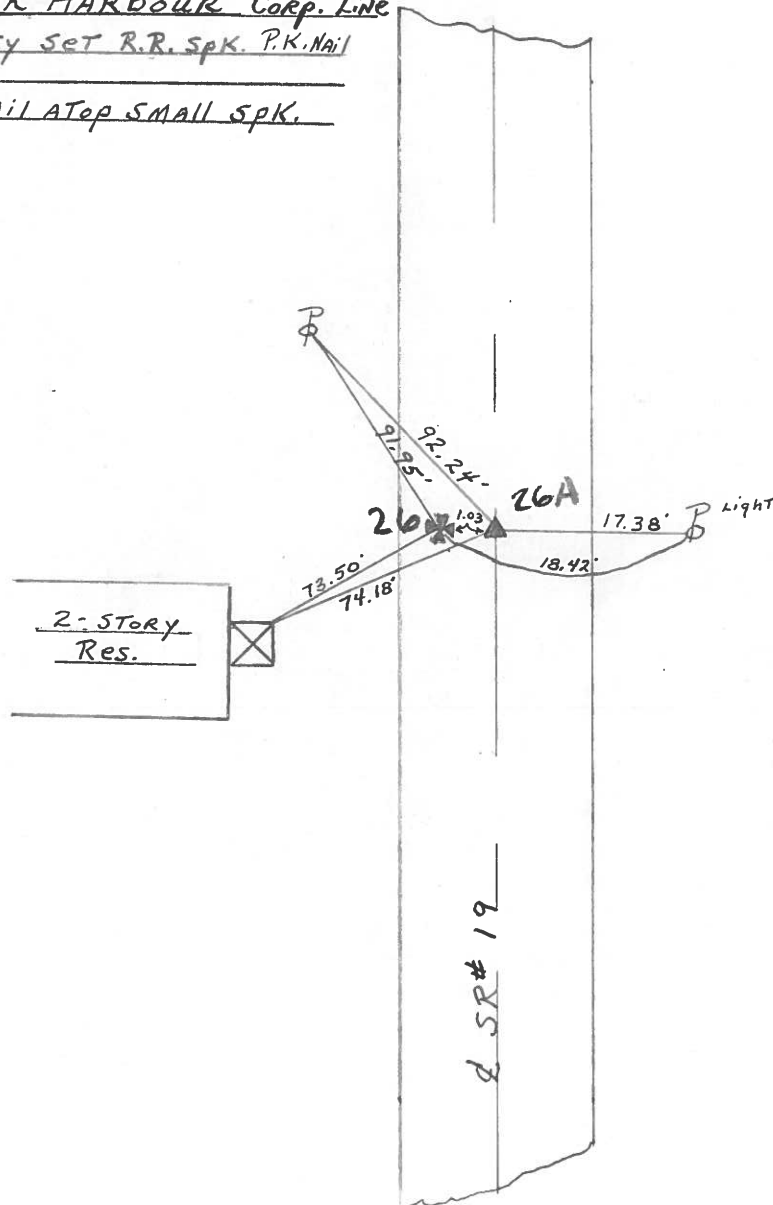
S.L.M. 240+27



P.I. & OAK HARBOUR Corp. Line

County Set R.R. Spk. P.K. Nail  
ON Top.

P.K. Nail ATop Small Spk.



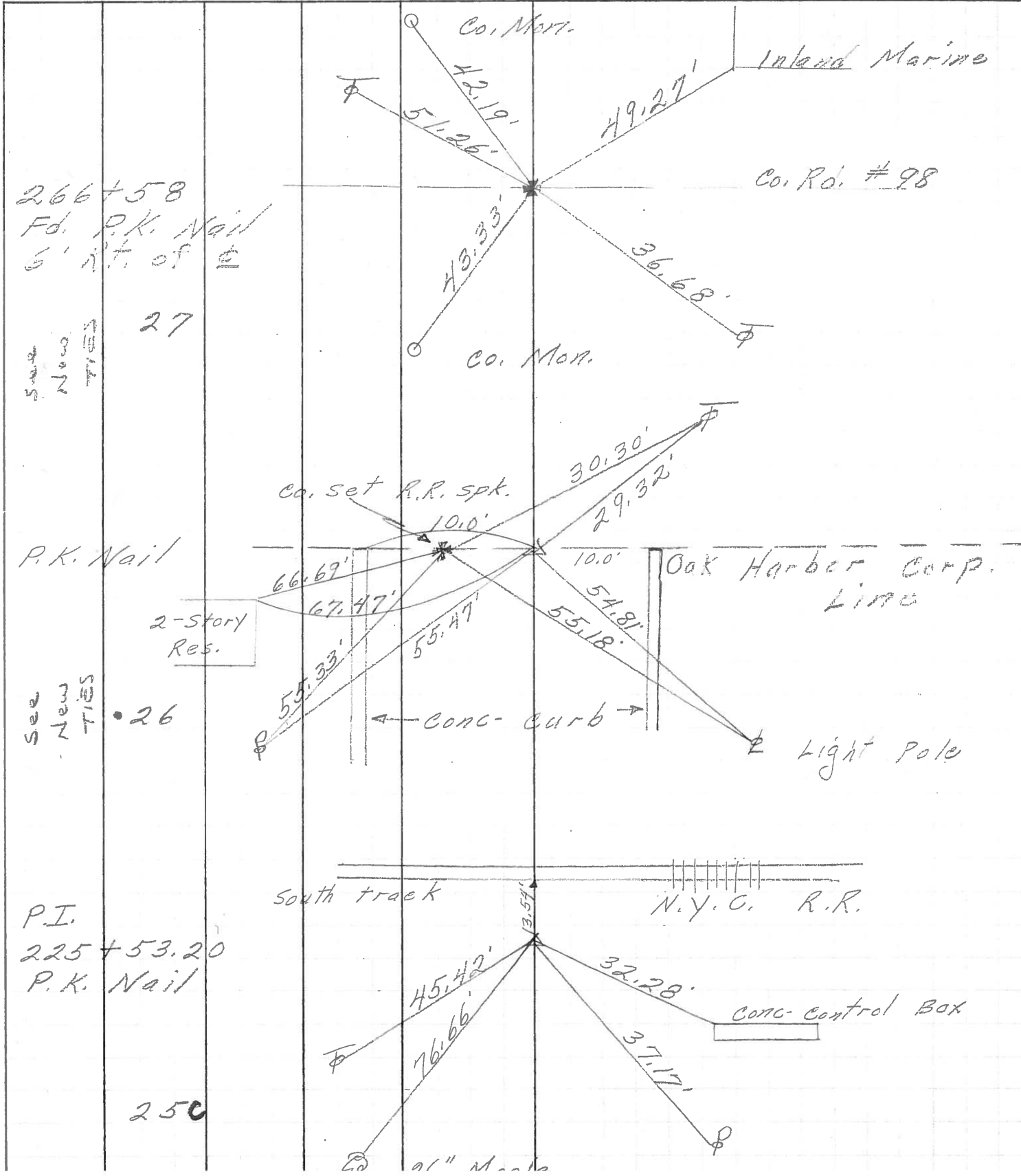
PERSONNEL TITLE PERSONNEL TITLE

COUNTY Ottawa DATE 5-4-71

S. R. 19 WEATHER \_\_\_\_\_

SEC. 32633 TEMP. \_\_\_\_\_

DESCRIPTION Oak Harbor E 1 point North JOB NO. \_\_\_\_\_



266+58  
 Fd. P.K. Nail  
 6' n't. of E

27

See New TIES

P.K. Nail

2-story Res.

26

See New TIES

P.I.  
 225+53.20  
 P.K. Nail

250

91" Mark

Inland Marine

Co. Rd. #98

Co. set R.R. spt.

Oak Harbor Corp. Line

Light Pole

South track

N.Y.C. R.R.

Conc. Control Box

91" Mark