

O.D.O.T. DISTRICT 2 SURVEY OFFICE (USE ONLY)

PERSONNEL

REFERENCE NO. 27

SHEET 17 OF 29

NOTES AUBLE

DATE 5/12/20

ROUTE SR 19

H.C. LEU

WEATHER SUNNY/WINDY

COUNTY OTTAWA

R.C. BALBAUGH

TEMP. 48°F

TOWNSHIP CARROLL

SECTION 32

DWG BY NIESE

PID 107903

T 7 N R 15 E

TYPE MONUMENT MONBOX W/ 1" SQ. IPIN W/DIMPLE

ON SURFACE - ~~BELOW~~ ON

OFFSET \odot PAVEMENT 3.5' ~~LT~~ : RT

6.0' TO RT EDGE PAVEMENT

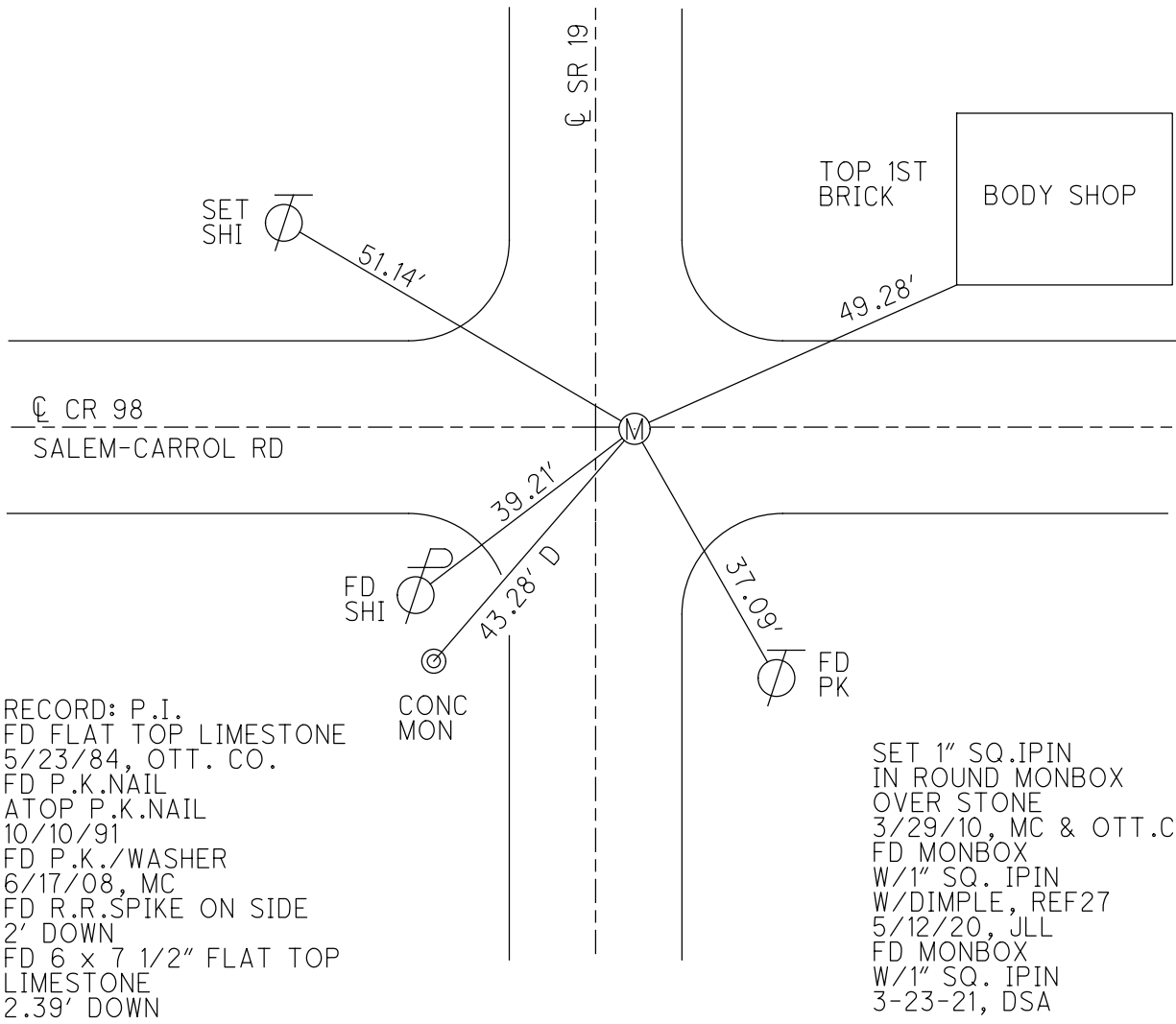
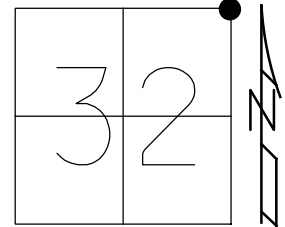
STATION: 266+58

HORZ.DATUM: NAD83(2011)

GEOID: NAVD88 2012A

GRID: NORTHING: 679801.171

EASTING: 1791843.224



RECORD: P.I.
 FD FLAT TOP LIMESTONE
 5/23/84, OTT. CO.
 FD P.K.NAIL
 ATOP P.K.NAIL
 10/10/91
 FD P.K./WASHER
 6/17/08, MC
 FD R.R.SPIKE ON SIDE
 2' DOWN
 FD 6 x 7 1/2" FLAT TOP
 LIMESTONE
 2.39' DOWN

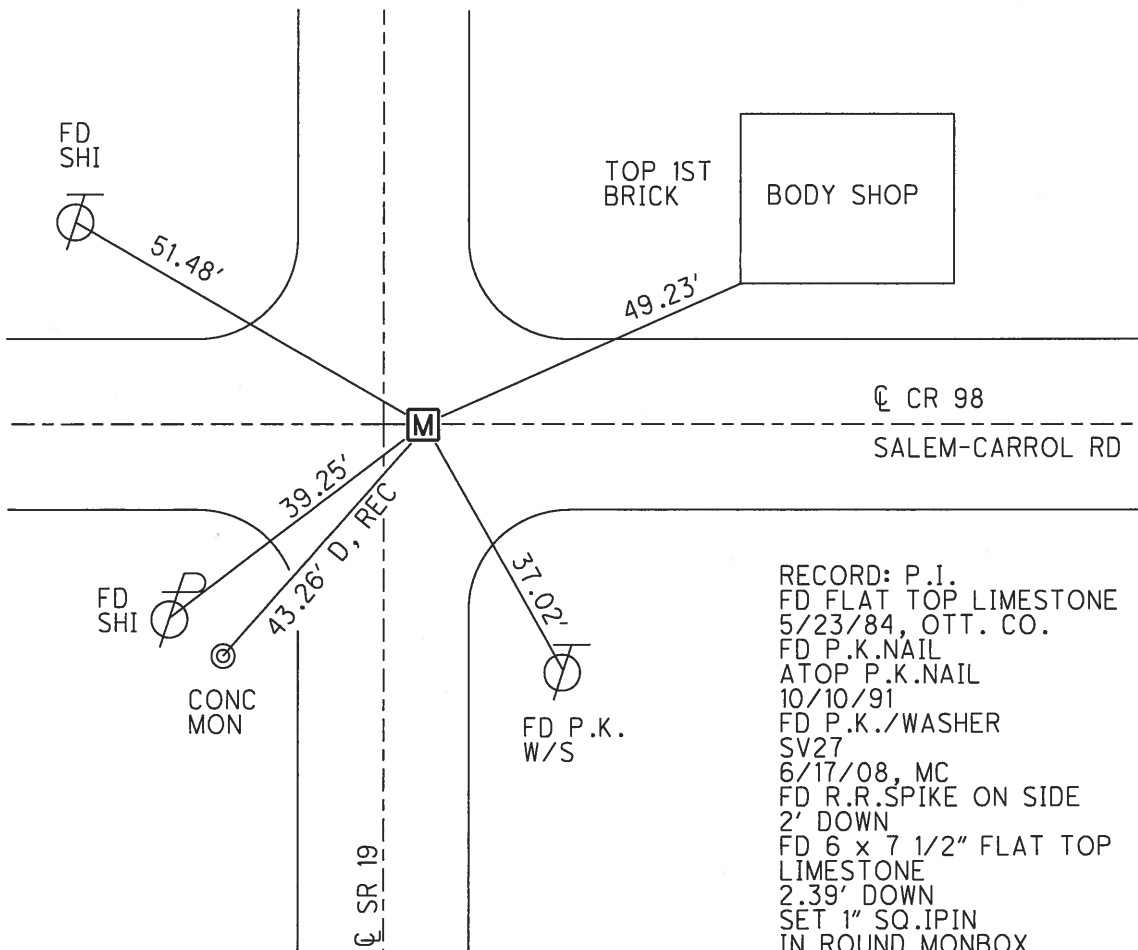
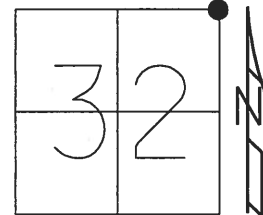
SET 1" SQ.IPIN
 IN ROUND MONBOX
 OVER STONE
 3/29/10, MC & OTT.CO.
 FD MONBOX
 W/1" SQ. IPIN
 W/DIMPLE, REF27
 5/12/20, JLL
 FD MONBOX
 W/1" SQ. IPIN
 3-23-21, DSA

O.D.O.T. DISTRICT 2 SURVEY OFFICE (USE ONLY)

PERSONNEL _____ REFERENCE NO. 27 SHEET 17 OF 29

NOTES HUSS DATE 3/29/10 ROUTE SR 19
 H.C. CANTERBURY WEATHER SUNNY COUNTY OTTAWA
 R.C. HUSS TEMP. 59° TOWNSHIP CARROLL
 SECTION 32
 T 7 N R 15 E

TYPE MONUMENT MONBOX W/ 1" SQ.IPIN
 ON SURFACE - ~~BELOW~~ ON _____
~~LEFT~~ - Q PAV'T - RIGHT 3.5
6' TO RT EDGE PAVEMENT
 S.L.M. 266+58
 GRID: NORTHING: 679801.149 EASTING: 1791843.214

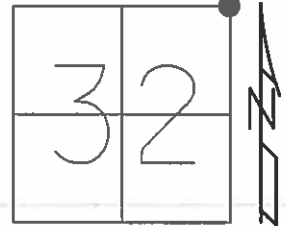


RECORD: P.I.
 FD FLAT TOP LIMESTONE
 5/23/84, OTT. CO.
 FD P.K.NAIL
 ATOP P.K.NAIL
 10/10/91
 FD P.K./WASHER
 SV27
 6/17/08, MC
 FD R.R.SPIKE ON SIDE
 2' DOWN
 FD 6 x 7 1/2" FLAT TOP
 LIMESTONE
 2.39' DOWN
 SET 1" SQ.IPIN
 IN ROUND MONBOX
 OVER STONE
 3/29/10, MC & OTT.CO.

O.D.O.T. DISTRICT 2 SURVEY OFFICE (USE ONLY)

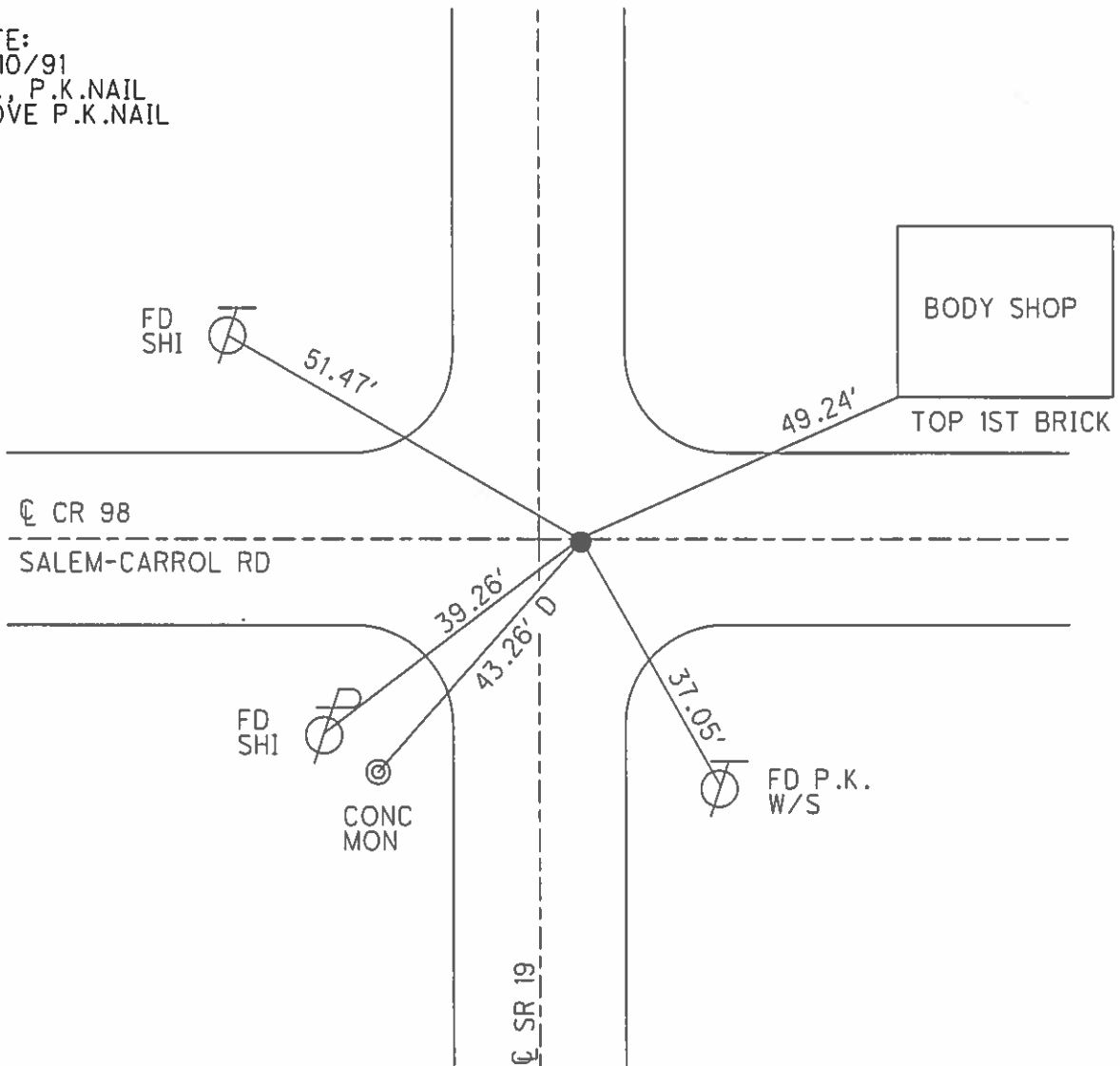
PERSONNEL _____ REFERENCE NO. 27 SHEET 17 OF 29
 NOTES HUSS DATE 6/17/08 ROUTE SR 19
 H.C. CANTERBURY WEATHER CLDY/WINDY COUNTY OTTAWA
 R.C. MOSER TEMP. 59° TOWNSHIP CARROLL
 _____ SECTION 32
 _____ T 7 N R 15 E

TYPE MONUMENT P.K./WASHER
 ON SURFACE - ~~BELOW~~ ON
~~LEFT~~ - CL PAV'T - RIGHT 4'
6' TO RT EDGE PAVEMENT
 S.L.M. 266+58



GRID: NORTHING: 679801.149 EASTING: 1791843.214

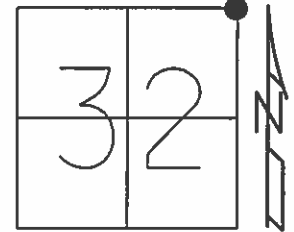
NOTE:
 10/10/91
 P.I., P.K.NAIL
 ABOVE P.K.NAIL



O.D.O.T. DISTRICT 2 SURVEY OFFICE (USE ONLY)

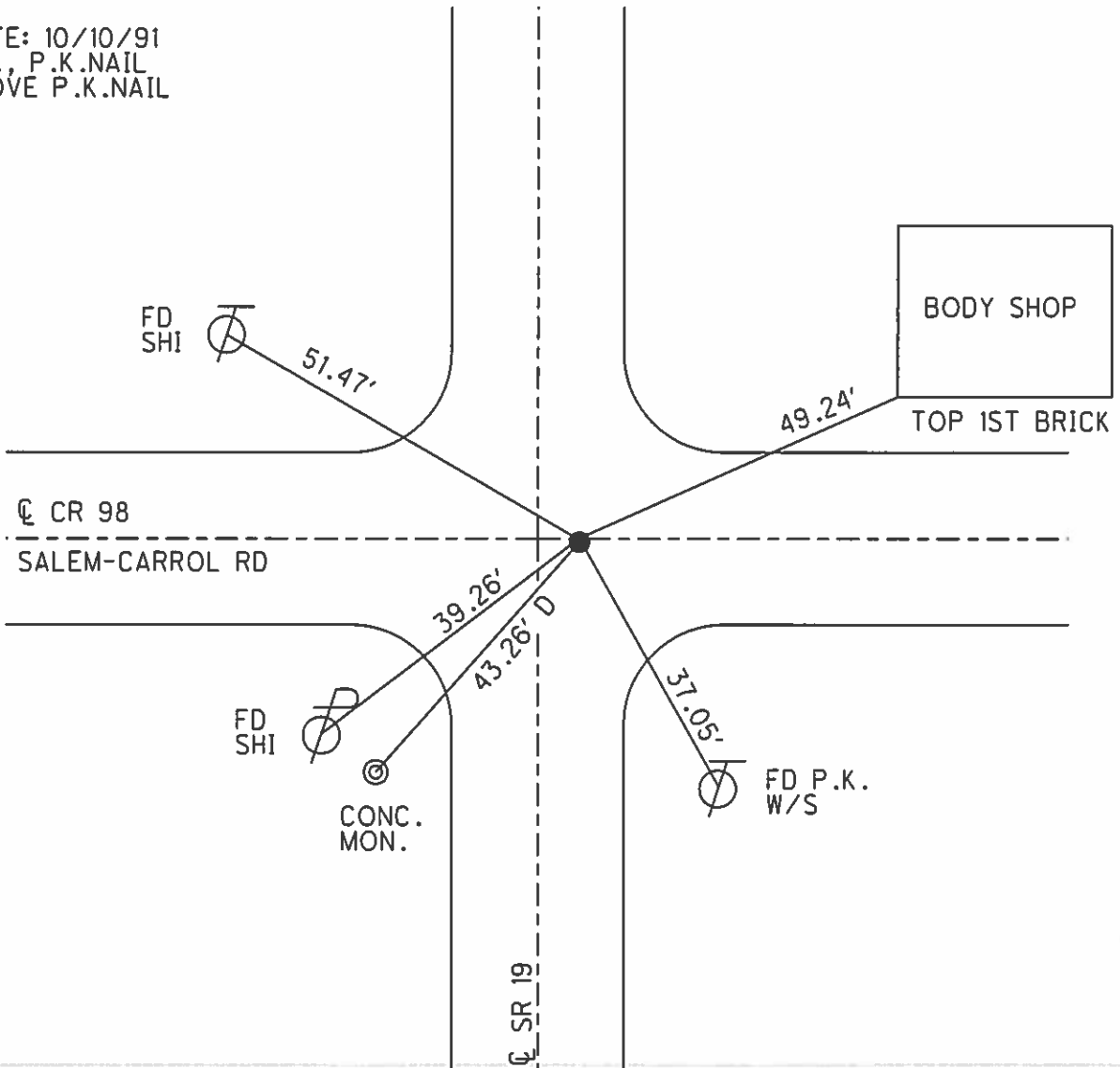
PERSONNEL _____ REFERENCE NO. 27 SHEET 21 OF 33
 NOTES HUSS DATE 6/17/08 ROUTE SR 19
 H.C. CANTERBURY WEATHER CLDY/WINDY COUNTY OTTAWA
 R.C. MOSER TEMP. 59° TOWNSHIP CARROLL
 _____ SECTION 32
 _____ T 7 N R 15 E

TYPE MONUMENT P.K./WASHER
 ON SURFACE - ~~BELOW~~ ON _____
~~LEFT~~ - \odot PAV'T - RIGHT 4'
6' TO RT EDGE PAVEMENT
 S.L.M. 266+58



Grid: Northing: 679801.149 Easting: 1791843.214

NOTE: 10/10/91
 P.I., P.K.NAIL
 ABOVE P.K.NAIL



O.D.O.T. DISTRICT 2 SURVEY OFFICE

PERSONNEL

REFERENCE NO. 27

SHEET 2 OF 11

NOTES Cheney

H.C. BARBOUR

R.C. RIPPLE

DATE 10/10/91

WEATHER Sunny

TEMP. 60°

ROUTE SR# 19

COUNTY OTTAWA

TOWNSHIP SALEM

SECTION _____

T 7 N R 15 E

TYPE MONUMENT Reset P.K. Nail & Washer

ON SURFACE ~~BELOW~~ _____

~~LEFT~~ - C PAV'T. - RIGHT 4'

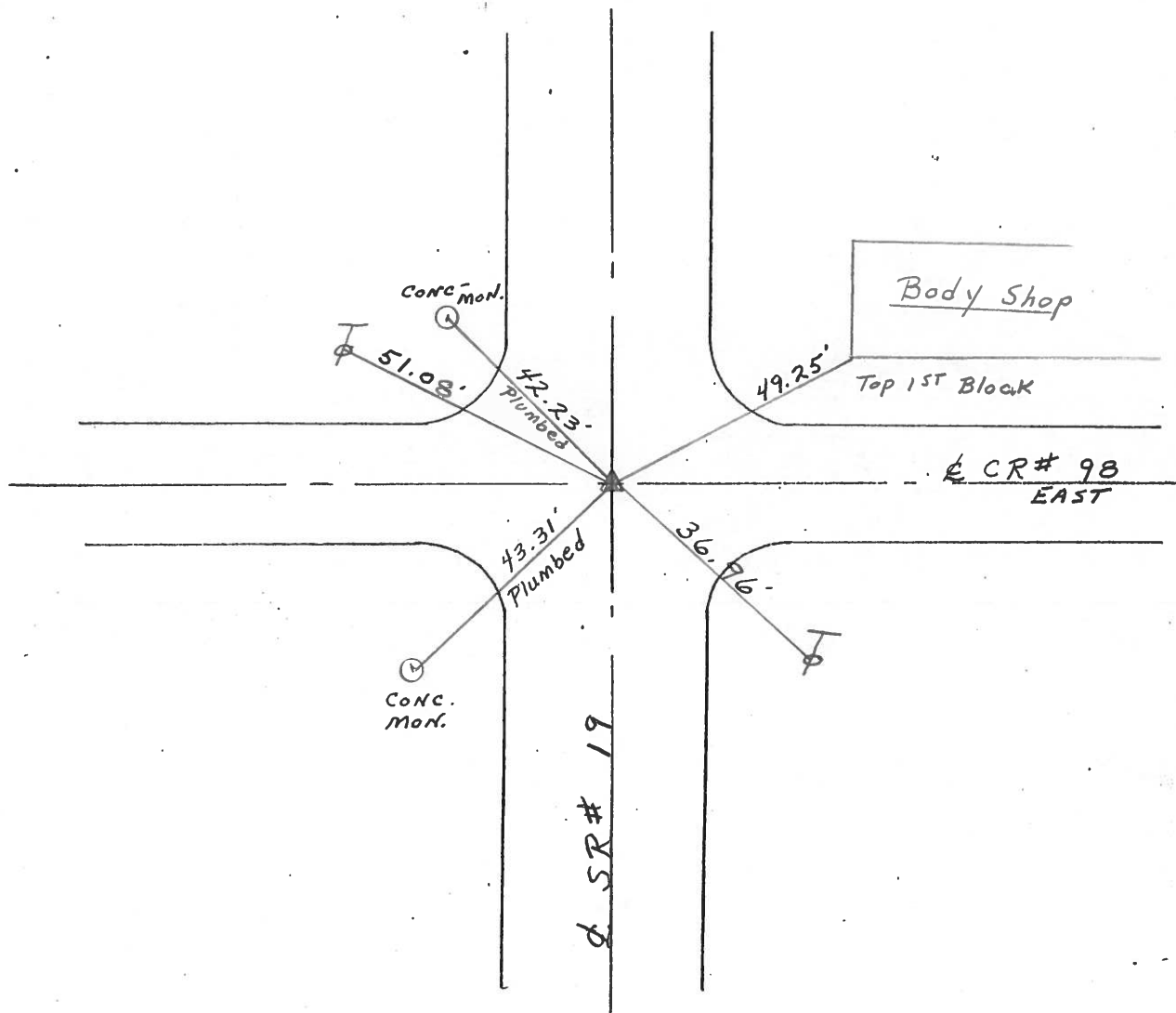
6' TO LT. EDGE PAVEMENT

S.L.M. 266+58

| | |
|----|----|
| 29 | 28 |
| 32 | 33 |



P.I. P.K. Nail Above P.K. Nail



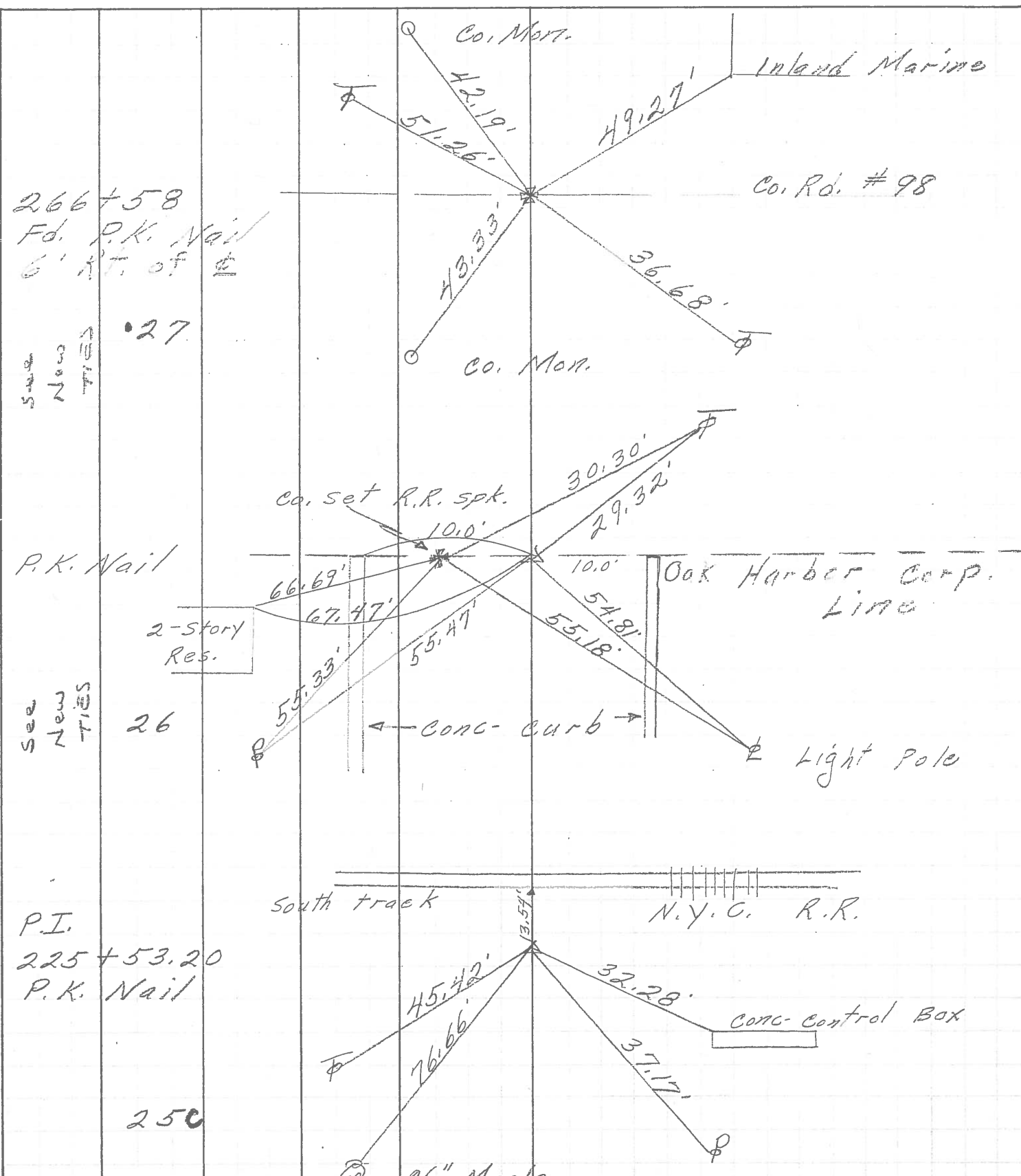
PERSONNEL TITLE PERSONNEL TITLE

COUNTY Ottawa DATE 5-4-71

S. R. 19 WEATHER _____

SEC. 32 & 33 TEMP. _____

DESCRIPTION Oak Harbor E 1 point North JOB NO. _____



266+58
Fd. P.K. Nail
6' N.T. of E

27
S.S. New TIES

P.K. Nail

26
S.S. New TIES

P.I.
225+53.20
P.K. Nail

250

96" Mark

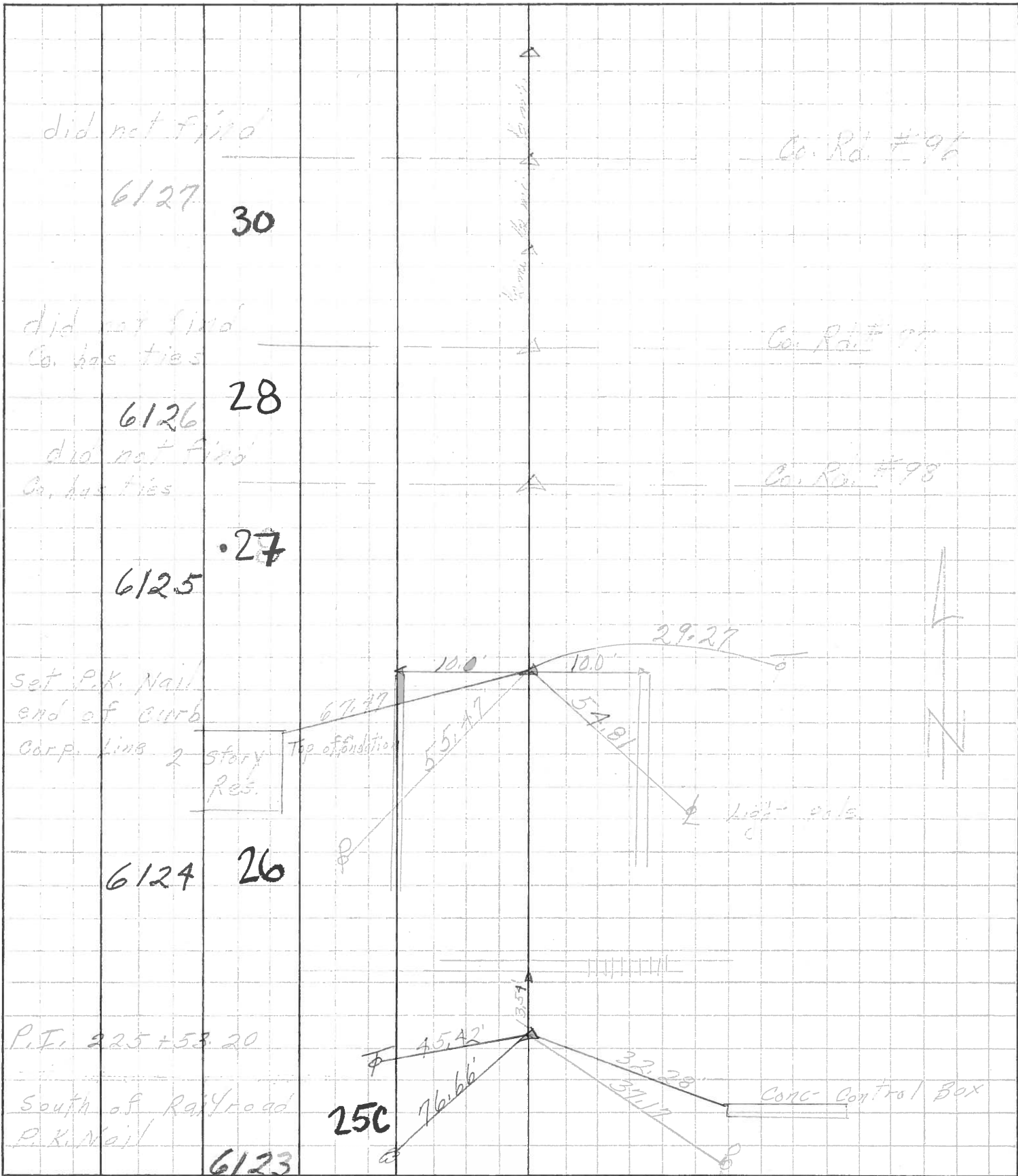
PERSONNEL TITLE PERSONNEL TITLE

Schneider
 Messer
 Barbour
 Redding

COUNTY Ottawa DATE 5-13-68
 S. R. 1.9 WEATHER Fair
 SEC. Oak Harbor North TEMP. 65°

DESCRIPTION Ties for Control Points JOB NO.

LEFT CENTER LINE RIGHT



26" Maple