

O.D.O.T. DISTRICT 2 SURVEY OFFICE (USE ONLY)

PERSONNEL _____ REFERENCE NO. 28 SHEET 18 OF 29
 NOTES AUBLE DATE 5/12/20 ROUTE SR 19
 H.C. LEU WEATHER SUNNY/WINDY COUNTY OTTAWA
 R.C. BALBAUGH TEMP. 48°F TOWNSHIP CARROLL
 DWG BY NIESE PID 107903 SECTION 29
 T 7 N R 15 E

TYPE MONUMENT MONBOX W/ 1" SQ. IPIN W/DIMPLE

ON SURFACE - ~~BELOW~~ ON

OFFSET \varnothing PAVEMENT 3.53' LT : ~~RT~~

- TO - EDGE PAVEMENT

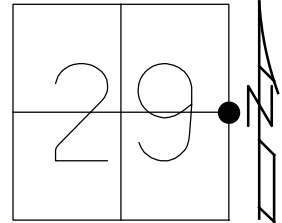
STATION: 293+01

HORZ.DATUM: NAD83(2011)

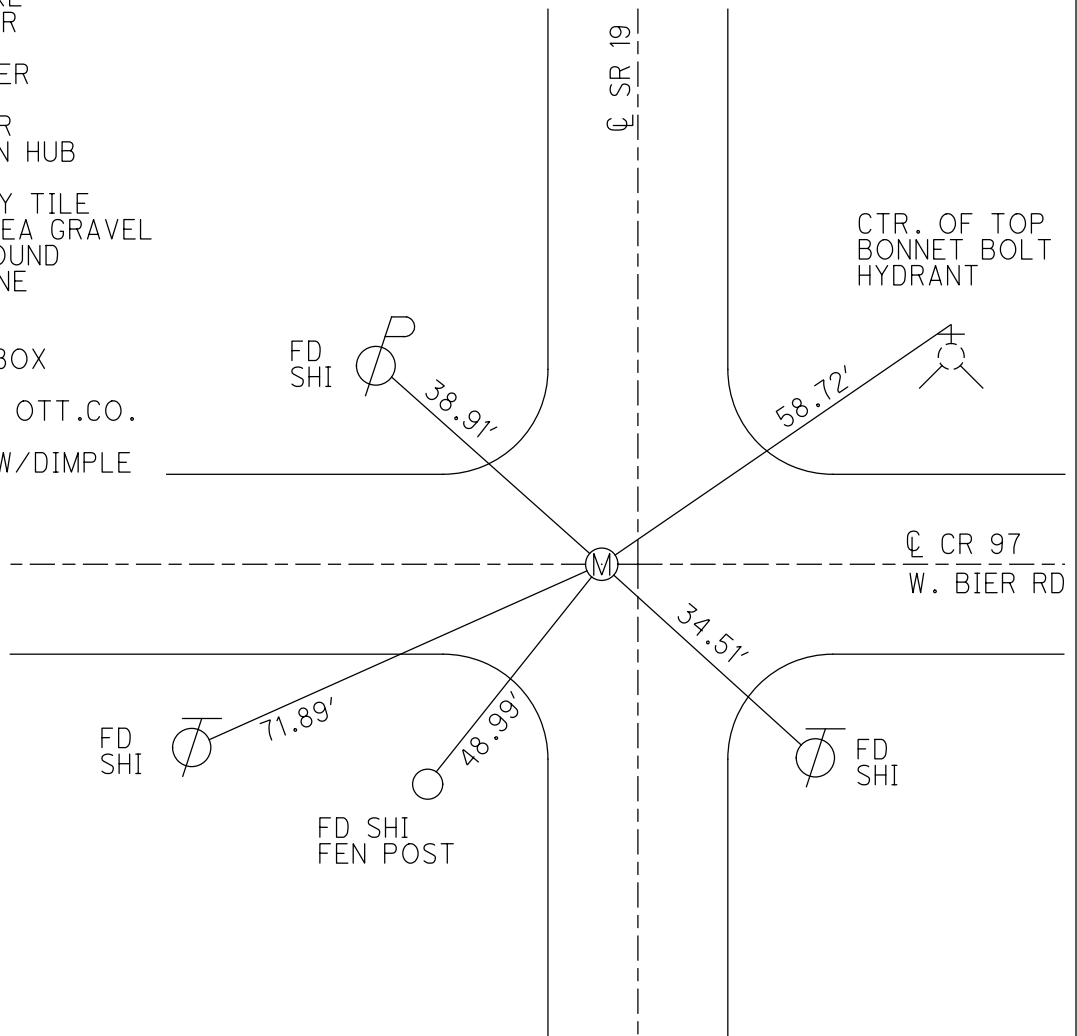
GEOID: NAVD88 2012A

GRID: NORTHING: 682443.148

EASTING: 1791886.317



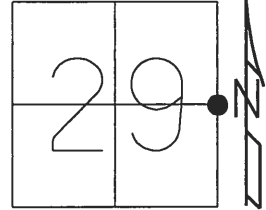
RECORD:
 FD SM.R.R.SPIKE
 FD P.K./WASHER
 6/17/08, MC
 SET MAG/WASHER
 10/26/09, SAH
 FD MAG/WASHER
 FD 1" SQ.WODEN HUB
 0.96' DOWN
 W/BROKEN CLAY TILE
 ON SIDES OF PEA GRAVEL
 FD 8 1/2 x 6" ROUND
 HARDHEAD STONE
 1.51' DOWN
 SET 1" SQ.IPIN
 IN ROUND MONBOX
 OVER STONE
 3/30/10, MC & OTT.CO.
 FD MONBOX
 W/1" SQ. IPIN W/DIMPLE
 REF28
 5/12/20, JLL
 3-23-21, DSA



O.D.O.T. DISTRICT 2 SURVEY OFFICE (USE ONLY)

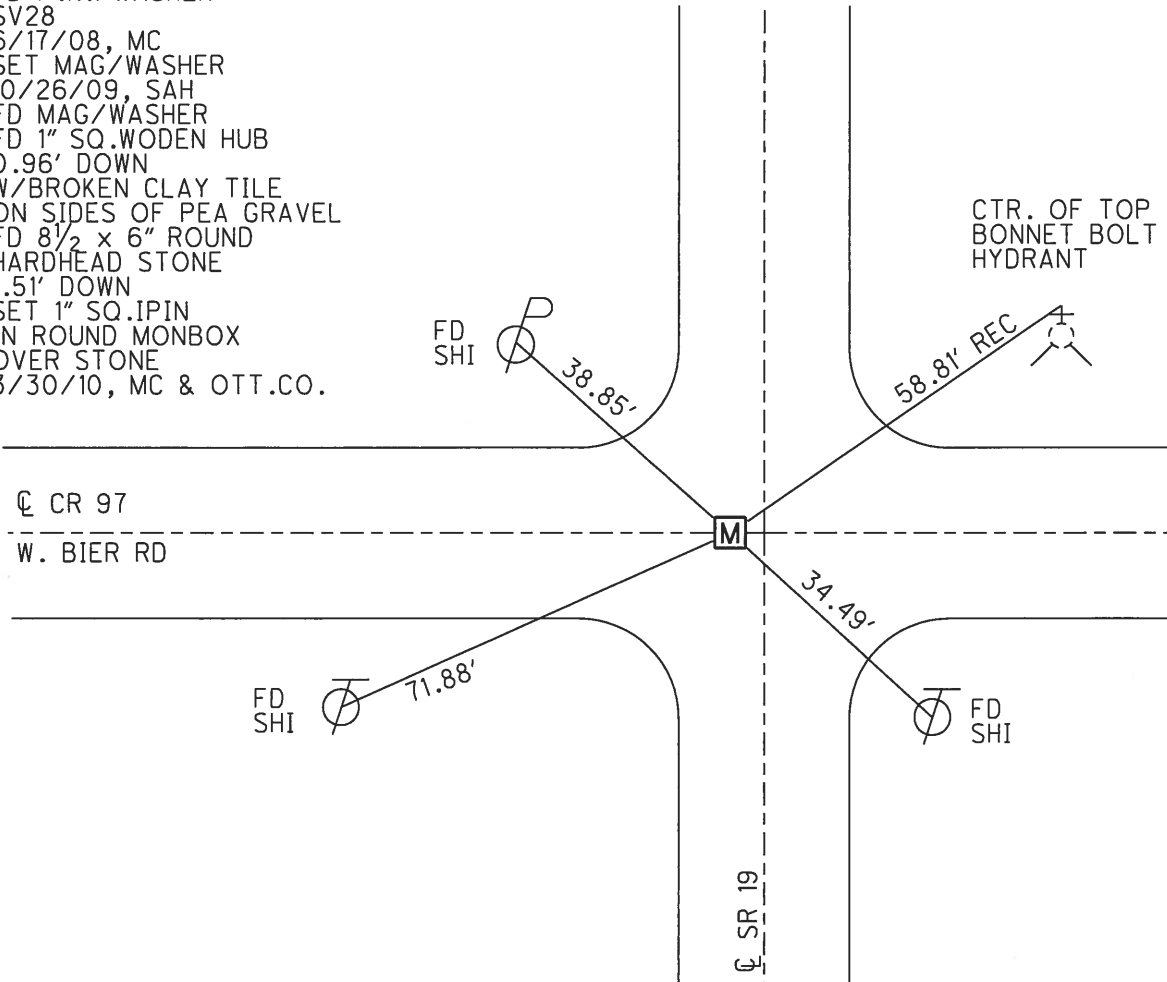
PERSONNEL _____ REFERENCE NO. 28 SHEET 18 OF 29
 NOTES HUSS DATE 3/30/10 ROUTE SR 19
 H.C. CANTERBURY WEATHER SUNNY COUNTY OTTAWA
 R.C. HUSS TEMP. 66° TOWNSHIP CARROLL
 _____ SECTION 29
 _____ T 7 N R 15 E

TYPE MONUMENT MONBOX W/ 1" SQ. IPIN
 ON SURFACE - ~~BELOW~~ ON
 LEFT - ☉ PAV'T - ~~RIGHT~~ 3.53'
 _____ TO _____ EDGE PAVEMENT
 S.L.M. 293+01



GRID: NORTHING: 682443.214 EASTING: 1791886.099

RECORD:
 FD SM.R.R.SPIKE
 FD P.K./WASHER
 SV28
 6/17/08, MC
 SET MAG/WASHER
 10/26/09, SAH
 FD MAG/WASHER
 FD 1" SQ.WODEN HUB
 0.96' DOWN
 W/BROKEN CLAY TILE
 ON SIDES OF PEA GRAVEL
 FD 8 1/2 x 6" ROUND
 HARDHEAD STONE
 1.51' DOWN
 SET 1" SQ. IPIN
 IN ROUND MONBOX
 OVER STONE
 3/30/10, MC & OTT.CO.



O.D.O.T. DISTRICT 2 SURVEY OFFICE (USE ONLY)

PERSONNEL _____ REFERENCE NO. 28 SHEET 18 OF 29
 NOTES HUSS DATE 6/17/08 ROUTE SR 19
 H.C. CANTERBURY WEATHER CLDY/WINDY COUNTY OTTAWA
 R.C. MOSER TEMP. 61° TOWNSHIP CARROLL
 _____ SECTION 29
 _____ T 7 N R 15 E

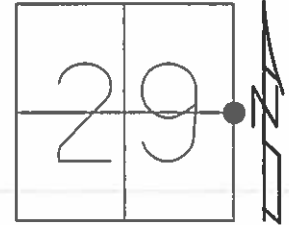
TYPE MONUMENT P.K./WASHER

ON SURFACE - ~~BELOW~~ ON

LEFT - ☉ PAV'T - ~~RIGHT~~ 3.81', 3.8' S. OF ☉ EAST

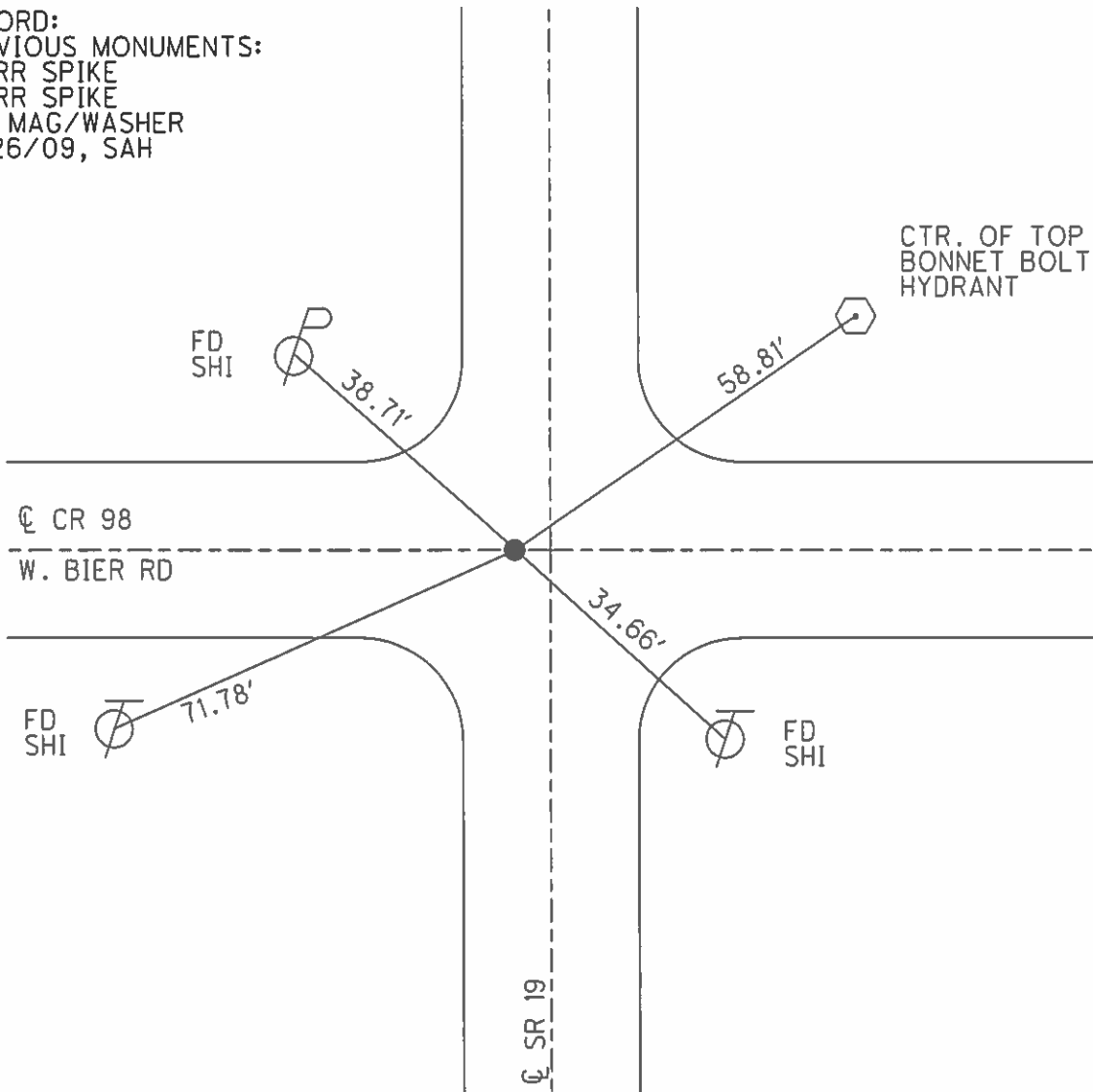
6' TO W EDGE PAVEMENT 1' S. OF ☉ WEST

S.L.M. 293+01



GRID: NORTHING: 682443.214 EASTING: 1791886.099

RECORD:
 PREVIOUS MONUMENTS:
 SM RR SPIKE
 SM RR SPIKE
 SET MAG/WASHER
 10/26/09, SAH



O.D.O.T. DISTRICT 2 SURVEY OFFICE (USE ONLY)

PERSONNEL _____ REFERENCE NO. 28 SHEET 22 OF 33
 NOTES HUSS DATE 6/17/08 ROUTE SR 19
 H.C. CANTERBURY WEATHER CLDY/WINDY COUNTY OTTAWA
 R.C. MOSER TEMP. 61° TOWNSHIP CARROLL
 _____ SECTION 29
 _____ T 7 N R 15 E

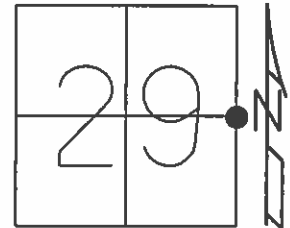
TYPE MONUMENT P.K./WASHER

ON SURFACE - ~~BELOW~~ ON

LEFT - ☉ PAV'T - ~~RIGHT~~ 3.81', 3.8' S. OF ☉ EAST
6' TO W EDGE PAVEMENT 1' S. OF ☉ WEST

S.L.M. 293+01

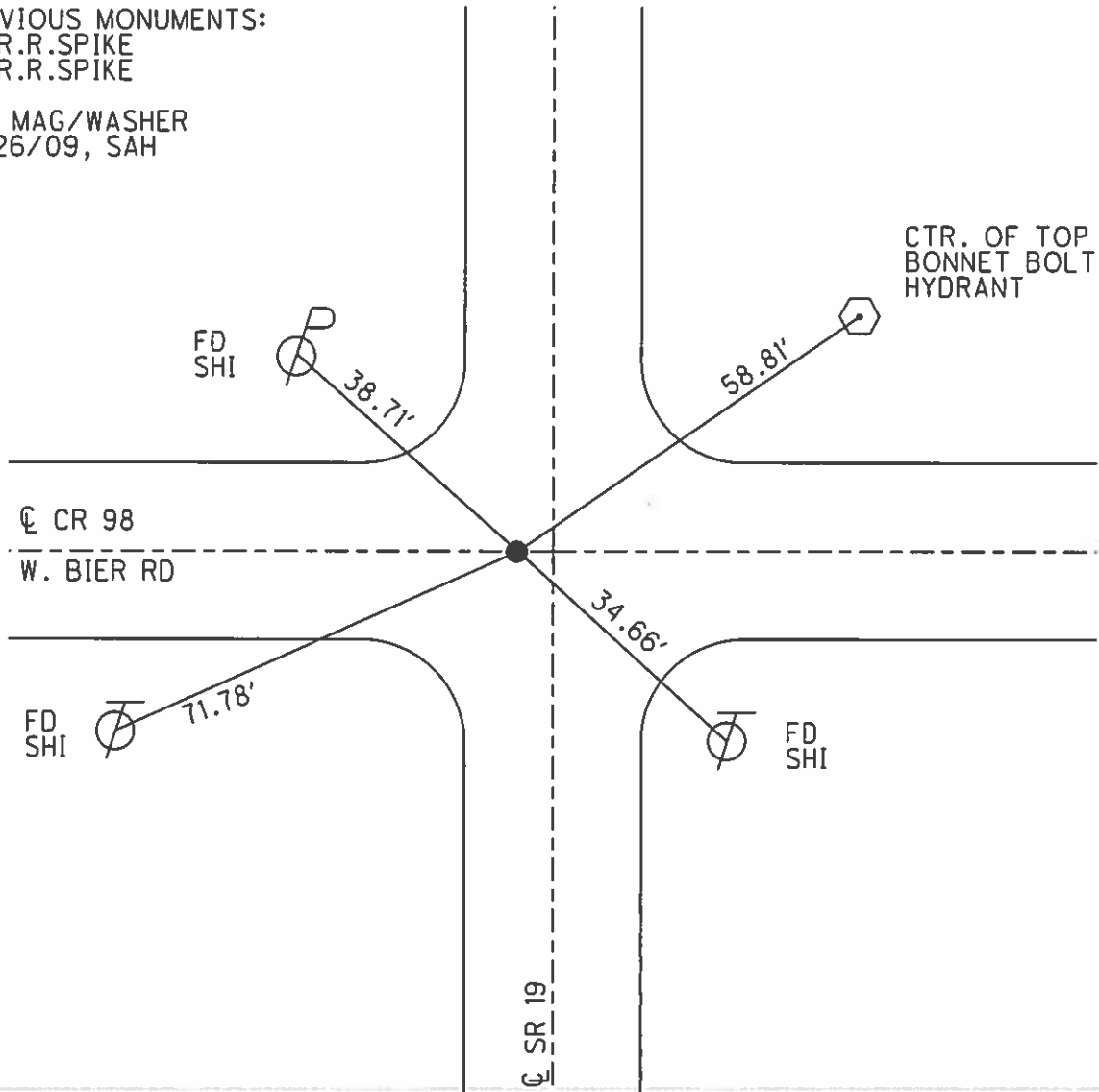
Grid: Northing: 682443.214 Easting: 1791886.099



PREVIOUS MONUMENTS:

SM.R.R.SPIKE
 SM.R.R.SPIKE

SET MAG/WASHER
 10/26/09, SAH



O.D.O.T. DISTRICT 2 SURVEY OFFICE (USE ONLY)

PERSONNEL _____ REFERENCE NO. 28 SHEET 18 OF 29

NOTES HUSS DATE 6/17/08 ROUTE SR 19
 H.C. CANTERBURY WEATHER CLDY/WINDY COUNTY OTTAWA
 R.C. MOSER TEMP. 61° TOWNSHIP CARROLL
 SECTION 29
 T 7 N R 15 E

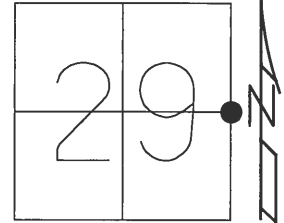
TYPE MONUMENT P.K./WASHER

ON SURFACE - ~~BELOW~~ ON _____

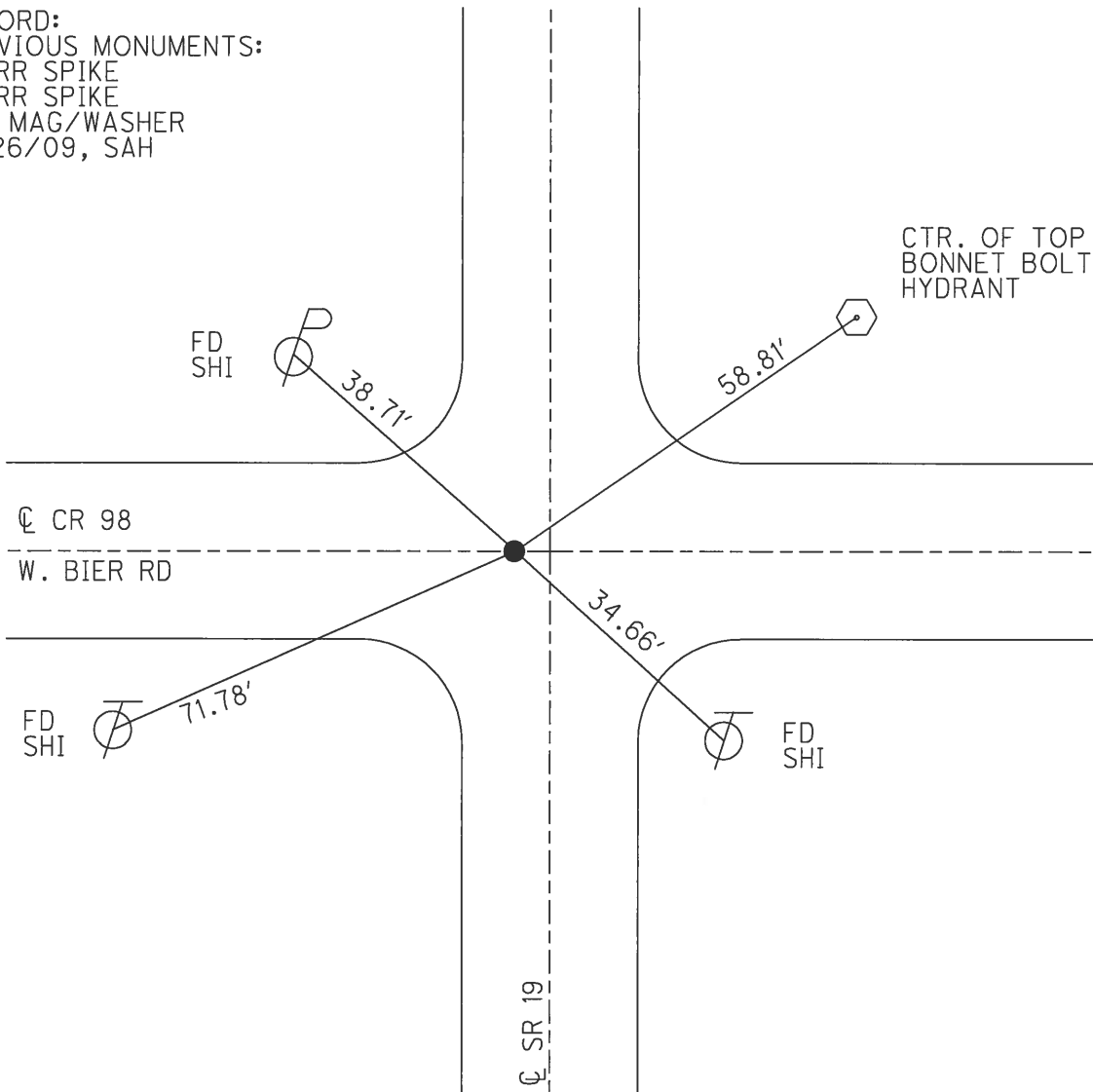
LEFT - ☉ PAV'T - ~~RIGHT~~ 3.81', 3.81' S.OF ☉ EAST
6' TO W EDGE PAVEMENT 1' S.OF ☉ WEST

S.L.M. 293+01

GRID: NORTHING: 682443.214 EASTING: 1791886.099



RECORD:
 PREVIOUS MONUMENTS:
 SM RR SPIKE
 SM RR SPIKE
 SET MAG/WASHER
 10/26/09, SAH



O.D.O.T. DISTRICT 2 SURVEY OFFICE

PERSONNEL _____

REFERENCE NO. 28

SHEET 3 OF 11

NOTES CHENEY

H.C. BARBOUR

DATE 10-10-1991

ROUTE 19

R.C. RIPPLE

WEATHER SUNNY

COUNTY OTTAWA

TEMP. 60°

TOWNSHIP CARROLL

SECTION 28 & 29

T. 7 N. R. 15 E

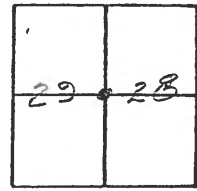
TYPE MONUMENT RE-SET PK. WASHER

ON SURFACE - BELOW

LEFT - CL PAV'T. - RIGHT 4'

6' TO W. EDGE PAVEMENT

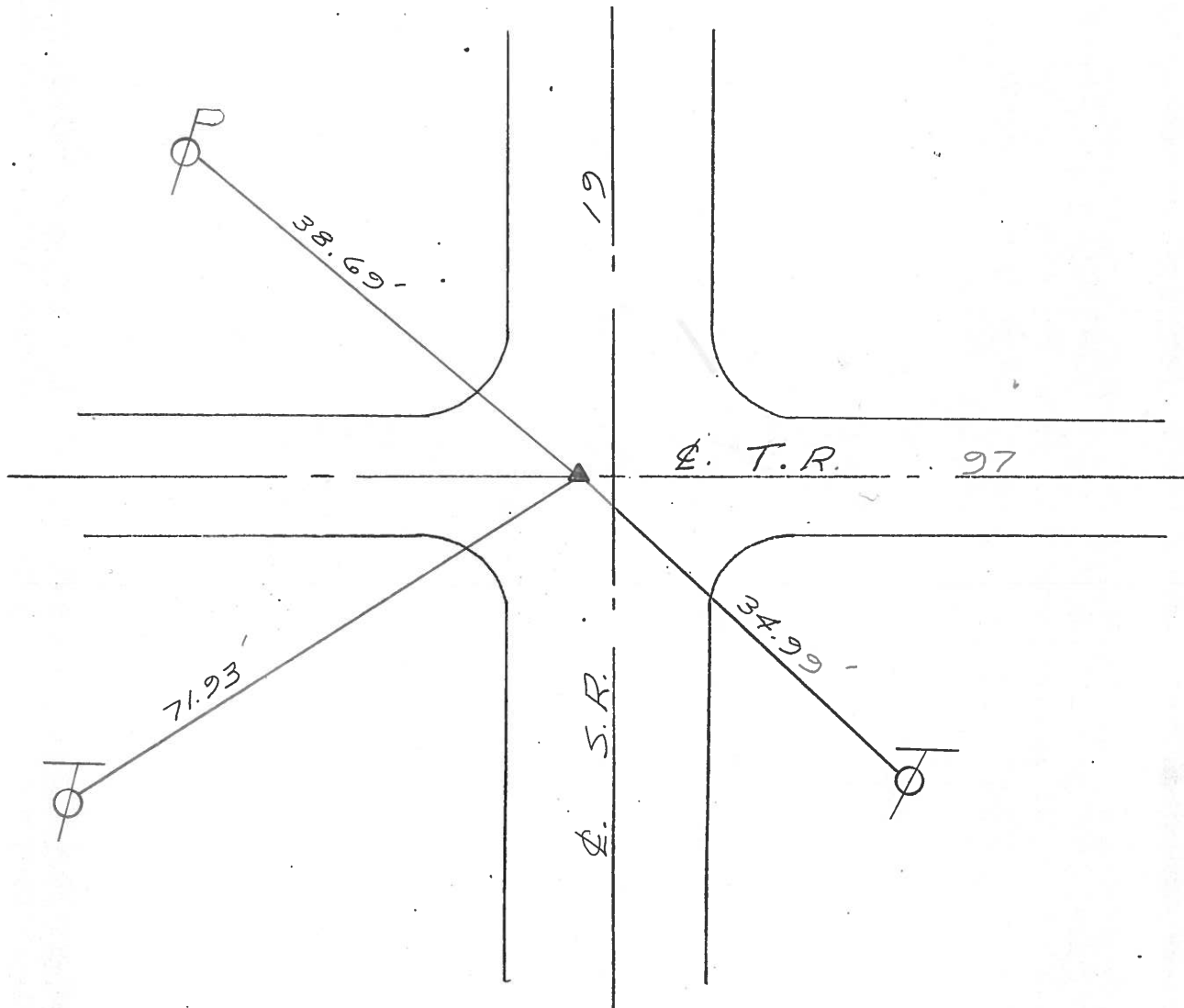
S.L.M. 293+01



PREVIOUS MONUMENTS:

SM. E.R. SPK.

SM. R.R. SPK.



PERSONNEL TITLE PERSONNEL TITLE

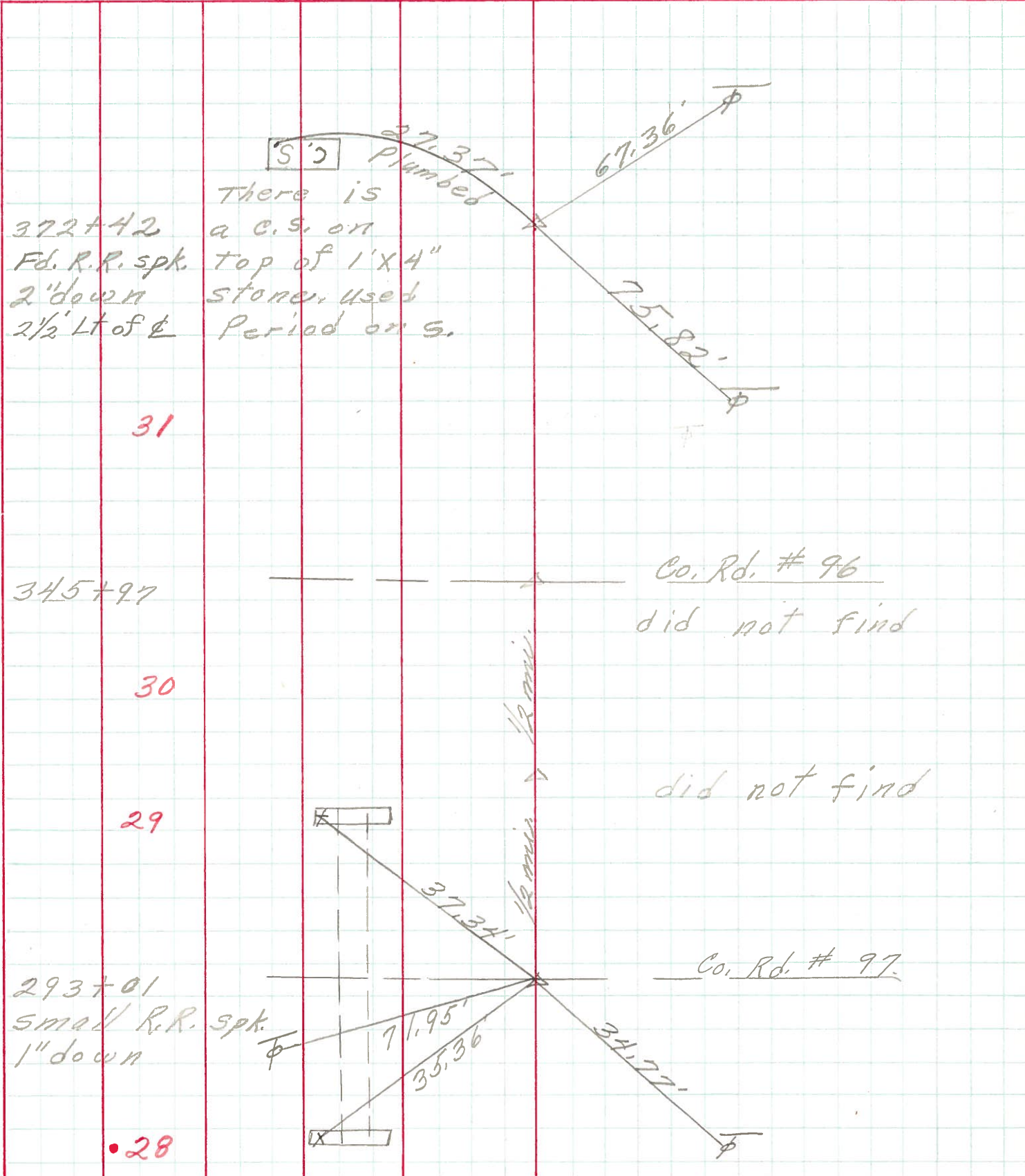
COUNTY Ottawa DATE 5-4-71

S. R. 19 WEATHER

SEC. 29&28-20&21 TEMP.

DESCRIPTION Oak Harbour to S.R. #2 JOB NO.

LEFT CENTER LINE RIGHT



372+42
Fd. R.R. spk.
2" down
2 1/2' Lt of &

There is
a c.s. on
top of 1'x4"
stone, used
Period on S.

31

345+97

Co. Rd. # 96

did not find

30

29

did not find

293+01
small R.R. spk.
1" down

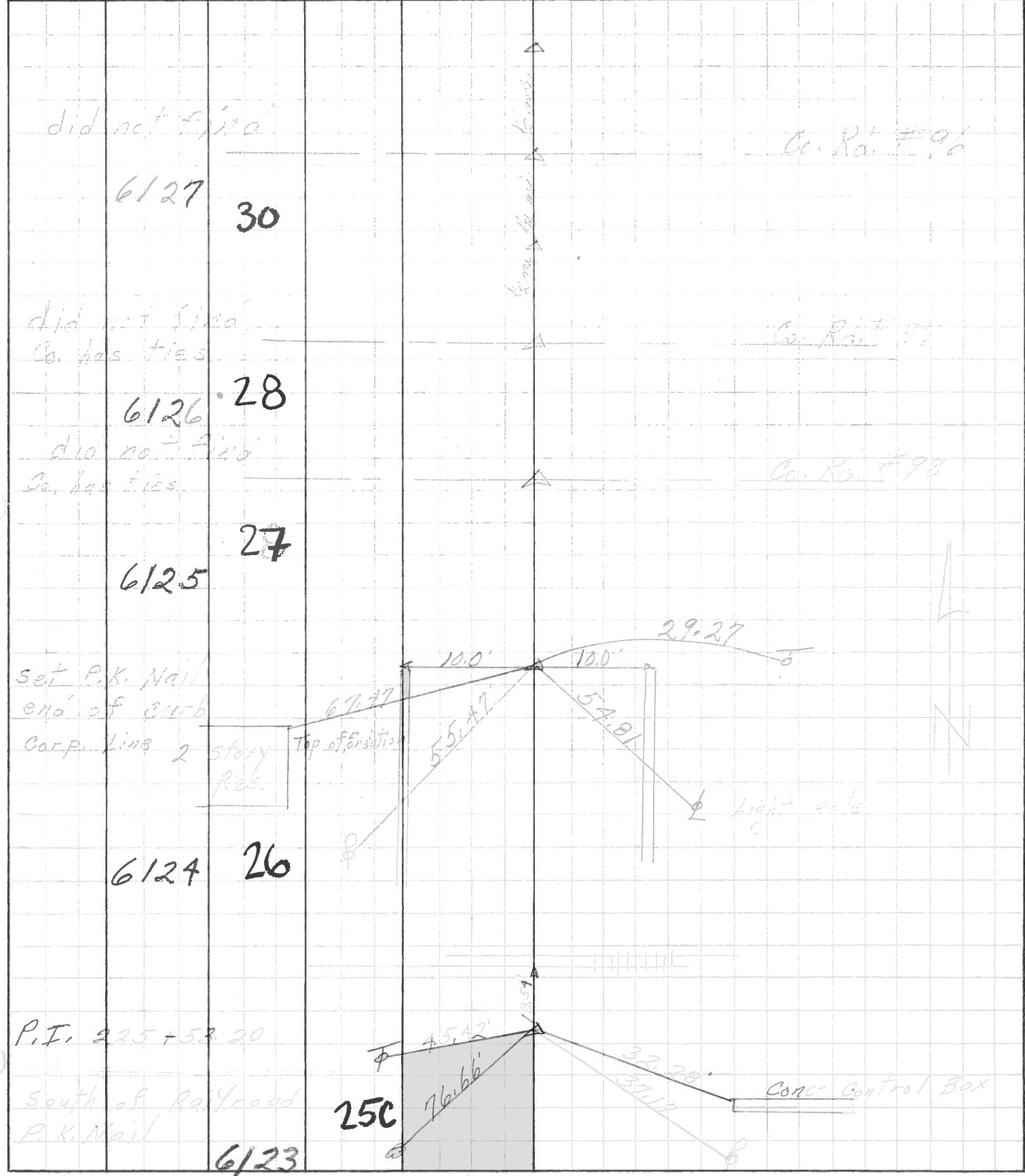
Co. Rd. # 97

28

PERSONNEL	TITLE	PERSONNEL	TITLE
Schneider			
Masser			
Barbour			
Radding			

COUNTY Ottawa DATE 5-13-68
 S. R. 19 WEATHER Fair
 SEC. Oak Harbor North TEMP. 65°

DESCRIPTION Ties for Control Points JOB NO. _____



26" Maple