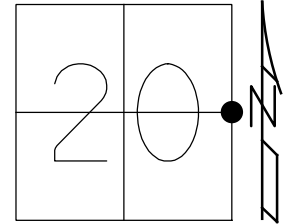


O.D.O.T. DISTRICT 2 SURVEY OFFICE (USE ONLY)

PERSONNEL _____ REFERENCE NO. 30 SHEET 20 OF 29
 NOTES AUBLE DATE 5/12/20 ROUTE SR 19
 H.C. LEU WEATHER SUNNY/WINDY COUNTY OTTAWA
 R.C. BALBAUGH TEMP. 48°F TOWNSHIP CARROLL
 SECTION 20
 DWG BY NIESE PID 107903 T 7 N R 15 E

TYPE MONUMENT MONBOX W/1" SQ.IPIN W/DIMPLE
 ON SURFACE - ~~BELOW~~ ON
 OFFSET C PAVEMENT 0.4' LT : RT
- TO - EDGE PAVEMENT
 STATION: 346+05



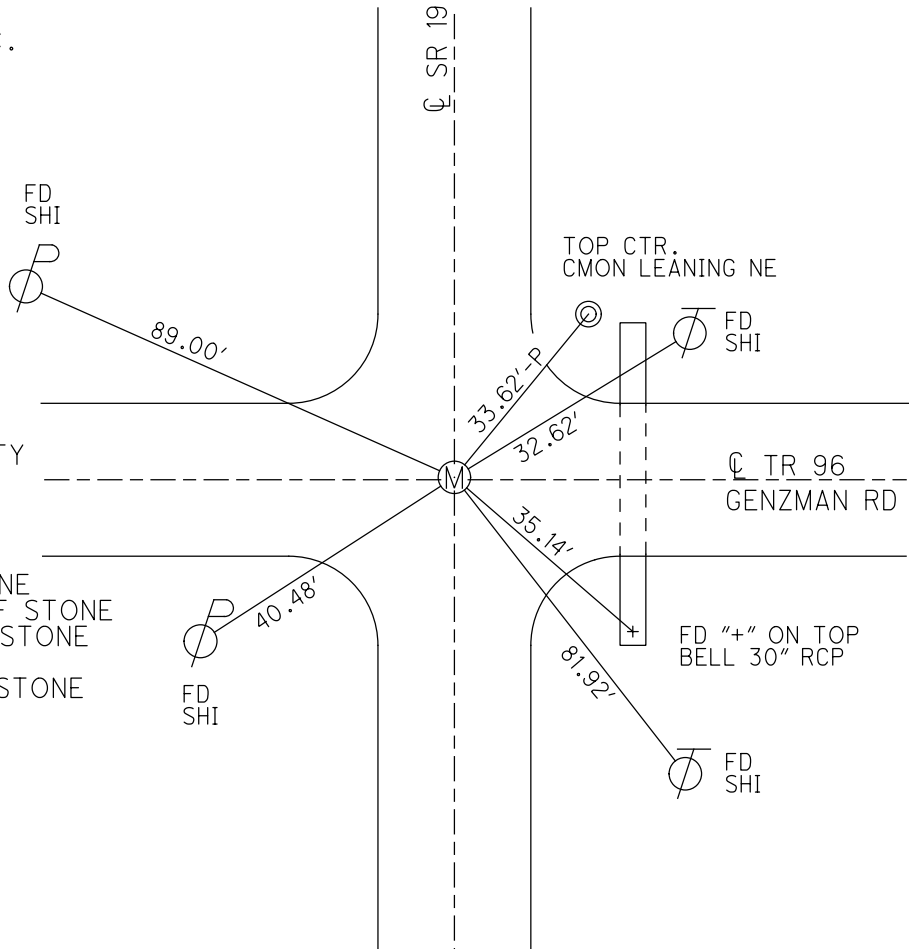
HORIZ.DATUM: NAD83(2011) GEOID: NAVD88 2012A
 GRID: NORTHING: 687735.487 EASTING: 1792009.408

RECORD:
 FD STONE 22"± DOWN
 PER PROUDFOOT & ASSOC.
 1993

FD STEEL PLATE
 OVER STONE 22"± DOWN
 5/10/93, CHENEY
 SET P.K./WASHER
 5/24/93, RCC
 FD P.K./WASHER
 6/12/08, MC
 FD P.K.NAIL 0.4' DOWN
 ATOP CTR OF STONE
 7/14/09

SET MAG/WASHER
 7/22/09, SAH
 FD MAG/WASHER
 FD STEEL PLATE
 W/GOLF BALL, PER COUNTY
 0.2' ABOVE STONE
 FD 7³/₄ x 4³/₄ x 12"
 POINTED GRANITE STONE
 1.68' DOWN

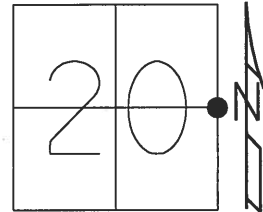
USED HIGH POINT ON STONE
 FD ANCHOR STONE E/S OF STONE
 FD A CEDAR HUB W/S OF STONE
 SET 1" SQ.IPIN
 IN ROUND MONBOX OVER STONE
 3/28/10, MC & OTT.CO.
 FD MONBOX W/1" SQ.IPIN
 REF30
 5/12/20, JLL
 3-23-21, DSA



O.D.O.T. DISTRICT 2 SURVEY OFFICE (USE ONLY)

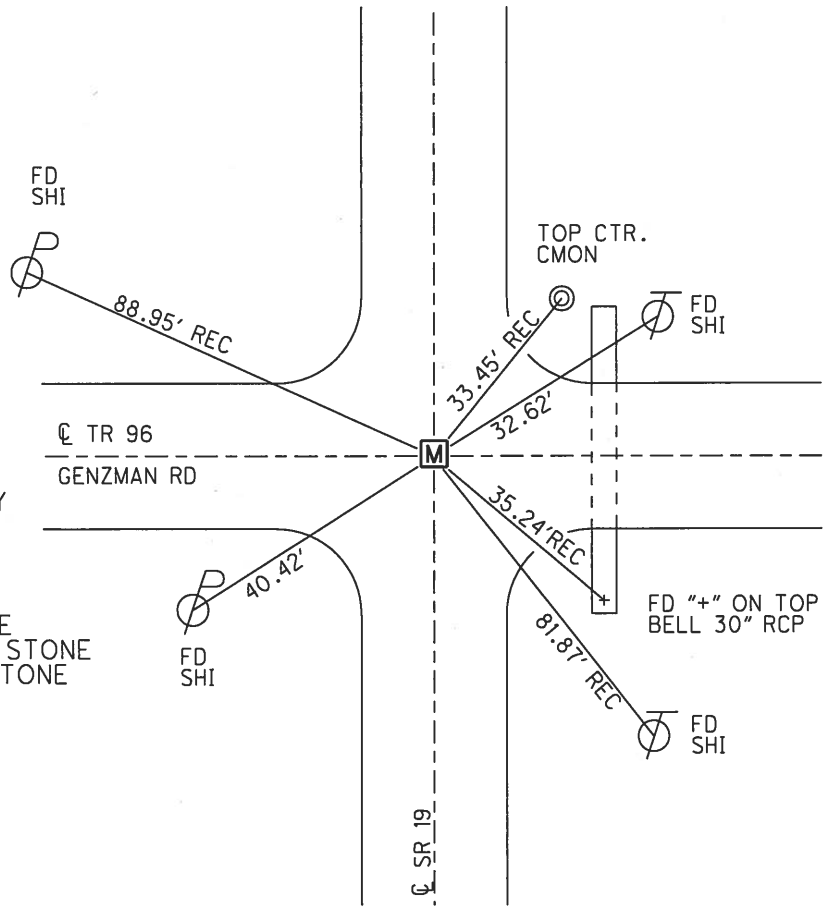
PERSONNEL _____ REFERENCE NO. 30 SHEET 20 OF 29
 NOTES HUSS DATE 3/28/10 ROUTE SR 19
 H.C. CANTERBURY WEATHER SUNNY COUNTY OTTAWA
 R.C. HUSS TEMP. 47° TOWNSHIP CARROLL
 SECTION 20
 T 7 N R 15 E

TYPE MONUMENT MONBOX W/ 1" SQ.IPIN
 ON SURFACE - ~~BELOW~~ ON
 LEFT - ☉ PAV'T - ~~RIGHT~~ 0.4'
 - TO - EDGE PAVEMENT
 S.L.M. 346+05



GRID: NORTHING: 687735.634 EASTING: 1792009.394

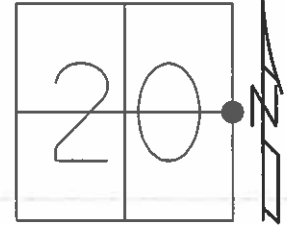
RECORD:
 FD STONE
 22"± DOWN
 PER PROUDFOOT & ASSOC.
 1993
 FD STEEL PLATE
 OVER STONE
 22"± DOWN
 5/10/93, CHENEY
 SET P.K./WASHER
 5/24/93, RCC
 FD P.K./WASHER
 6/12/08, MC
 FD P.K.NAIL
 0.4' DOWN
 ATOP CTR OF STONE
 SV30
 7/14/09
 SET MAG/WASHER
 7/22/09, SAH
 FD MAG/WASHER
 FD STEEL PLATE
 W/GOLF BALL, PER COUNTY
 0.2' ABOVE STONE
 FD 7 3/4 x 4 3/4 x 12"
 POINTED GRANITE STONE
 1.68' DOWN
 USED HIGH POINT ON STONE
 FD ANCHOR STONE E/S OF STONE
 FD A CEDAR HUB W/S OF STONE
 SET 1" SQ.IPIN
 IN ROUND MONBOX
 OVER STONE
 3/28/10, MC & OTT.CO.



O.D.O.T. DISTRICT 2 SURVEY OFFICE (USE ONLY)

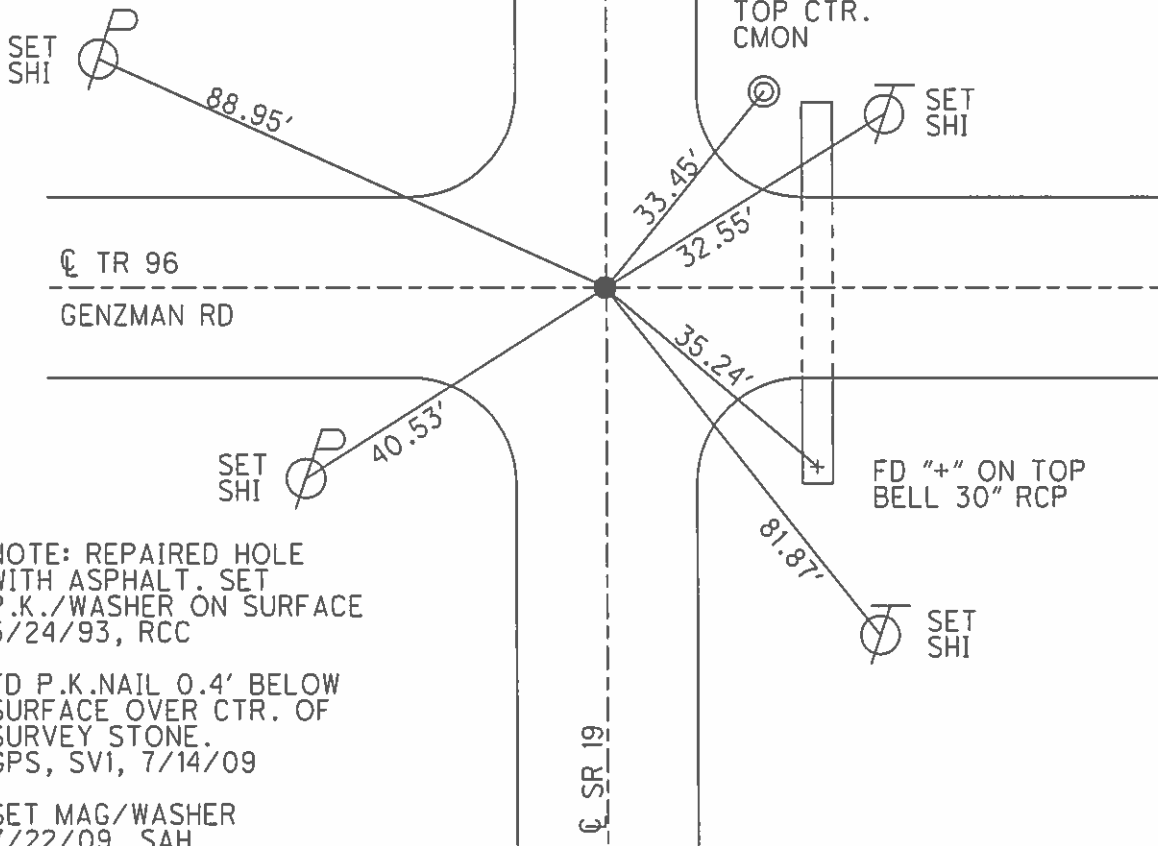
PERSONNEL _____ REFERENCE NO. 30 SHEET 20 OF 29
 NOTES HUSS DATE 6/12/08 ROUTE SR 19
 H.C. CANTERBURY WEATHER PT.CLDY/WINDY COUNTY OTTAWA
 R.C. MOSER TEMP. 61° TOWNSHIP CARROLL
 _____ SECTION 20
 _____ T 7 N R 15 E

TYPE MONUMENT P.K./WASHER
 ON SURFACE - ~~BELOW~~ ON
 LEFT - ☉ PAV'T - RIGHT ON
 _____ TO _____ EDGE PAVEMENT
 S.L.M. 346+05



GRID: NORTHING: 687735.634 EASTING: 1792009.394

RECORD:
 E 1/4 POST SEC.20
 W 1/4 POST SEC.21
 FD STONE 22"± DEEP
 PER PROUDFOOT & ASSOC.
 1993
 FD STEEL PLATE
 OVER STONE 22"± DEEP
 5/10/93, CHENEY



NOTE: REPAIRED HOLE
 WITH ASPHALT. SET
 P.K./WASHER ON SURFACE
 5/24/93, RCC

FD P.K.NAIL 0.4' BELOW
 SURFACE OVER CTR. OF
 SURVEY STONE.
 GPS, SVI, 7/14/09

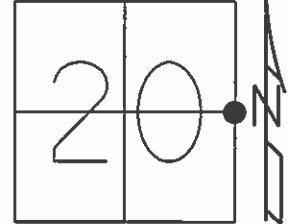
SET MAG/WASHER
 7/22/09, SAH

O.D.O.T. DISTRICT 2 SURVEY OFFICE (USE ONLY)

PERSONNEL _____ REFERENCE NO. 30 SHEET 24 OF 33
 NOTES HUSS DATE 6/12/08 ROUTE SR 19
 H.C. CANTERBURY WEATHER PT.CLDY/WINDY COUNTY OTTAWA
 R.C. MOSER TEMP. 61° TOWNSHIP CARROLL
 _____ SECTION 20
 _____ T 7 N R 15 E

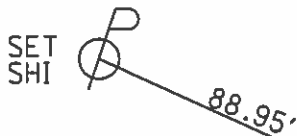
TYPE MONUMENT P.K./WASHER
 ON SURFACE - ~~BELOW~~ ON
 LEFT - ☉ PAV'T - RIGHT ON
- TO - EDGE PAVEMENT
 S.L.M. 346+05

Grid: Northing: 687735.634 Easting: 1792009.394

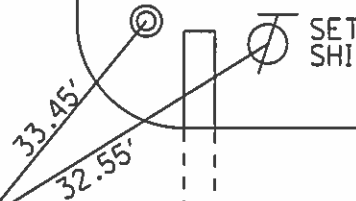


E 1/4 POST SEC.20
 W 1/4 POST SEC.21
 FD STONE 22"± DEEP
 PER PROUDFOOT & ASSOC.
 1993

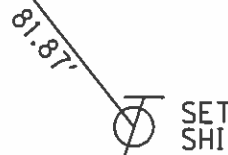
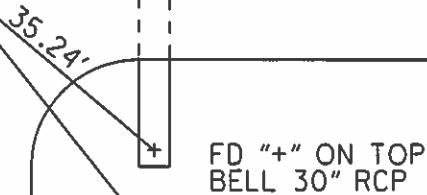
FD STEEL PLATE
 OVER STONE 22"± DEEP
 5/10/93, CHENEY



TOP CTR.
 CMON



☉ TR 96
 GENZMAN RD



NOTE: REPAIRED HOLE
 WITH ASPHALT. SET
 P.K./WASHER ON SURFACE
 5/24/93, RCC

FD P.K.NAIL 0.4' BELOW
 SURFACE OVER CTR. OF
 SURVEY STONE.
 GPS, SV1, 7/14/09

SET MAG/WASHER
 7/22/09, SAH

☉ SR 19

O.D.O.T. DISTRICT 2 SURVEY OFFICE

PERSONNEL

REFERENCE NO. 30

SHEET 1 OF 1

NOTES CHENEY

H.C. RIPPLE

R.C. BARBOUR

GEYMAN

DATE 5-10-1993

WEATHER JUNNY

TEMP. 80°

ROUTE 19

COUNTY OTAWA

TOWNSHIP CARROLL

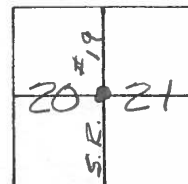
SECTION 20 & 21

T7 N R 15 E

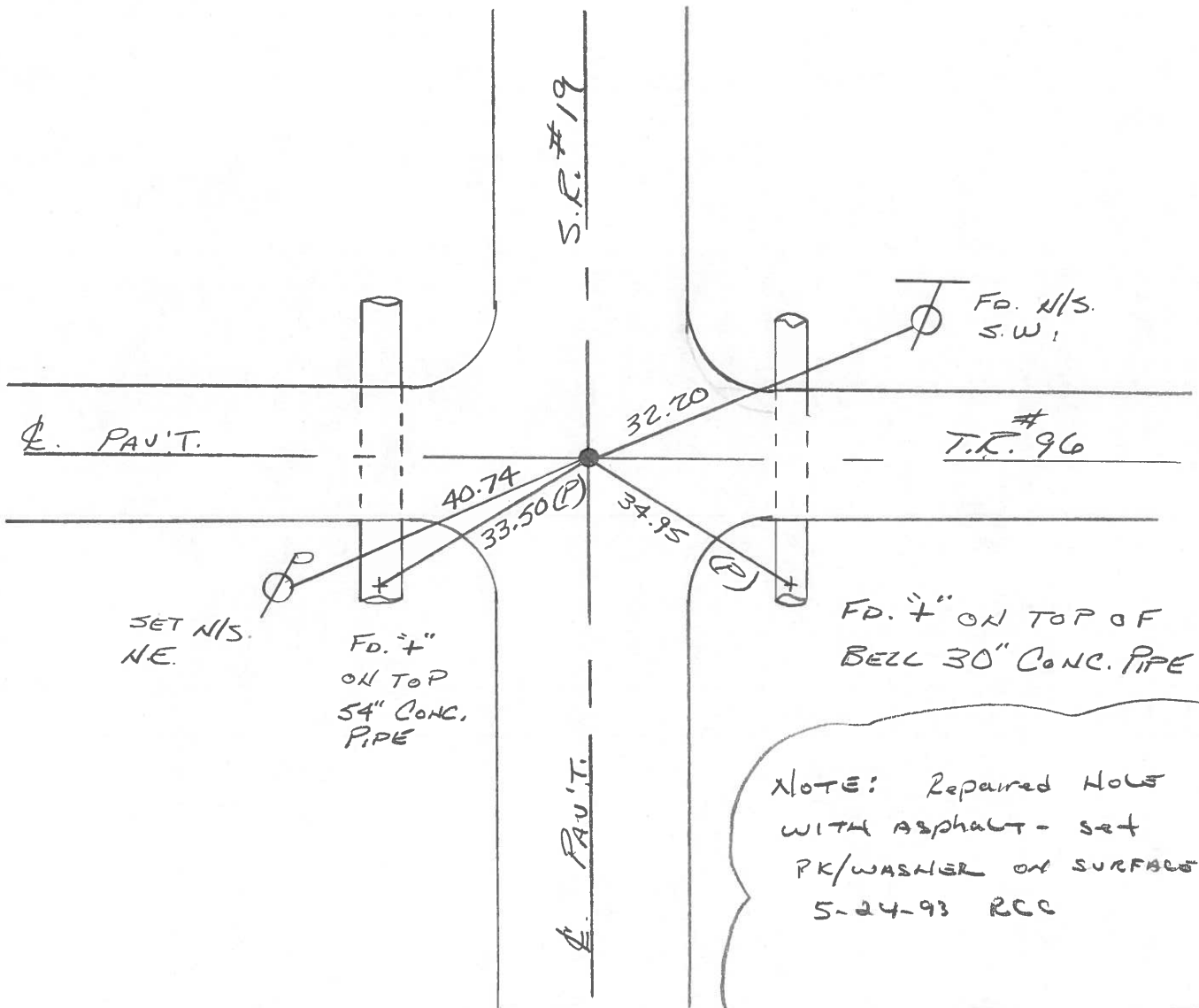
TYPE MONUMENT STONE W/STEEL PLATE OVER
~~ON SURFACE~~ - BELOW 22" ±

~~LEFT - & PAV'T. - RIGHT~~ CENTER OF INTERSECTION
TO EDGE PAVEMENT

S.L.M. 345+95.90



E 1/4 Post SEC. 20
 W 1/4 Post SEC. 21
 FD. Stone 22" ± DEEP } PER "PROUDFOOT & ASSOC."
 1993





MAY 11 '93 09:33 4198657195

PROUDFOOT ASSOCIATES

engineers • surveyors • planners
5360 Heatherdowns Blvd.
Toledo, Ohio 43614

JOB 93251G

P. 2/3

SHEET NO. 10

OF 10

CALCULATED BY _____

DATE 29 APRIL '93

CHECKED BY _____

DATE _____

SCALE _____

Rousos
HATT

CARROLL TWP.

OTTAWA CO.

OTT 19.06.67 BRIDGE

± REF'S

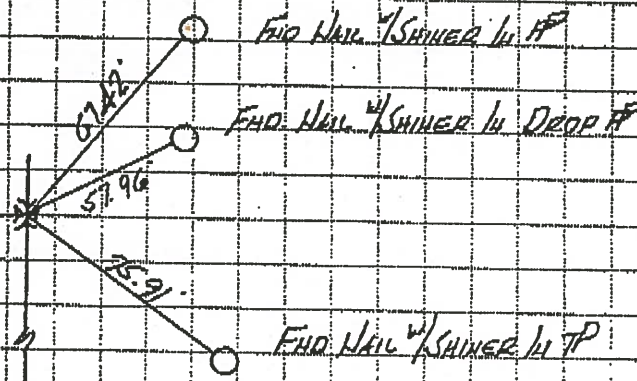
31



CORN. SEC'S 16-17-20-21

SLM STA. 372+42

FND. P.H. NAIL w/ WASHER C. SURF



± RUSHA

± SR 19 & SEC. LINE 7

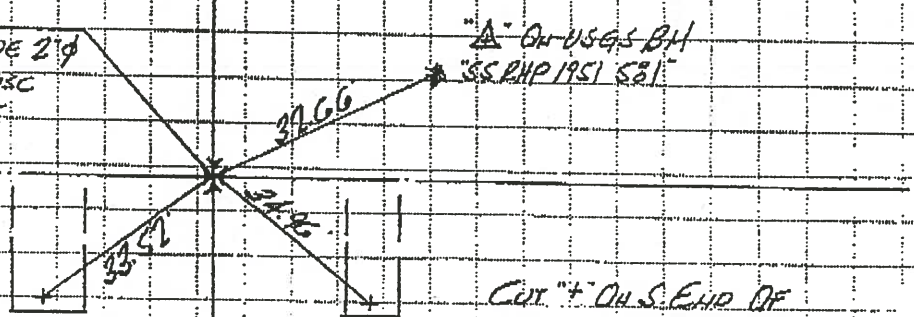
GREEK

1/4 CORN. SEC'S 20 & 21

STA. 345+95.90

FND. GOLF BALL SET INSIDE 2" Ø
OPENING IN G. & IRON DISC
SET OVER TOP OF STONE
1.5' BELOW SURF.

30

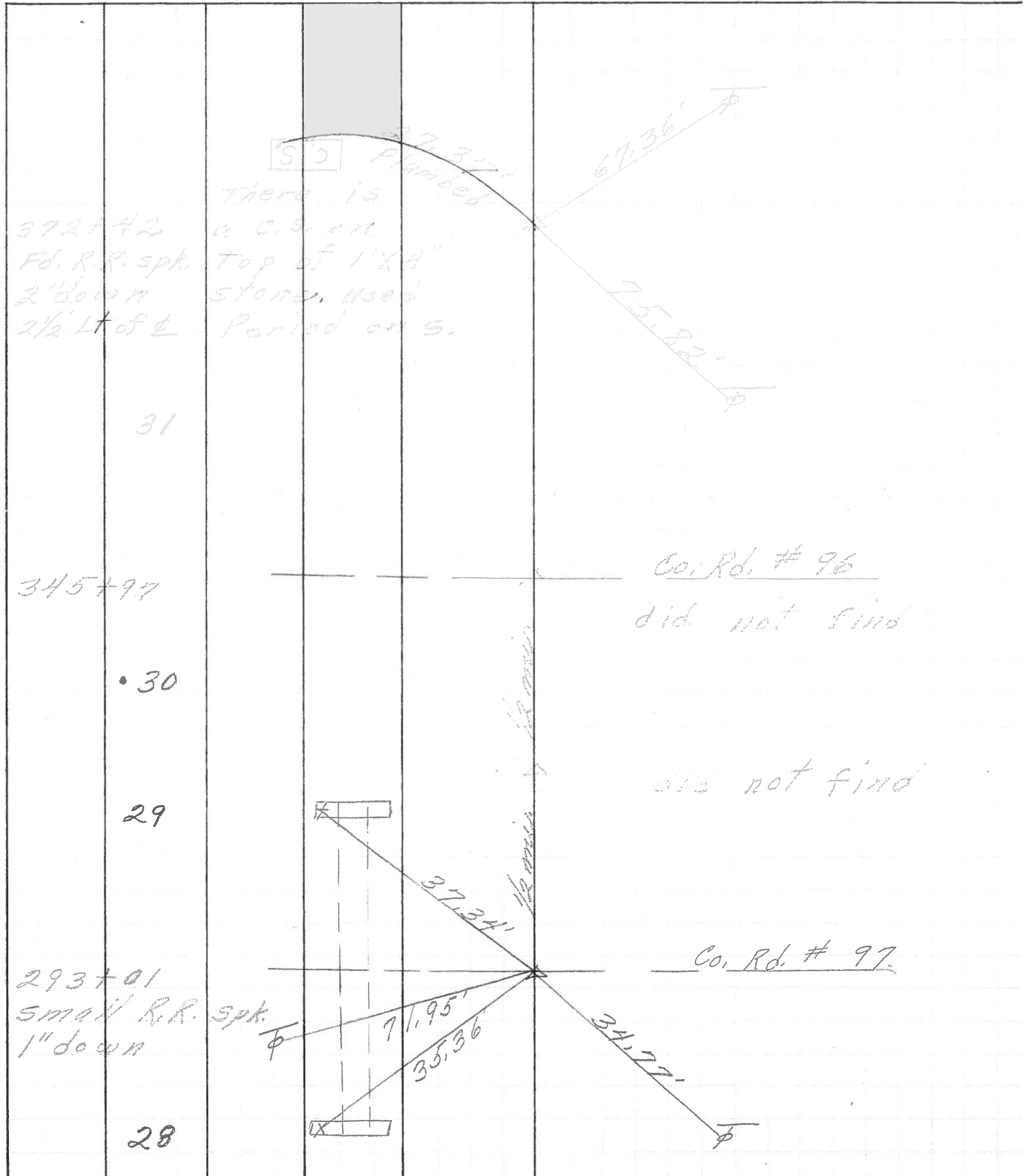


CUL. ± ON S. END
OF SA. Ø RCP CULVERT

CUL. ± ON S. END OF
30" RCP CULVERT

Ref. No. 30

PERSONNEL	TITLE	PERSONNEL	TITLE	COUNTY	DATE
				Ottawa	5-4-71
				S. R. <u>19</u>	WEATHER
				SEC. <u>29 & 28 - 20 & 21</u>	TEMP.
DESCRIPTION <u>Oak Harbour to S.R. #2</u>				JOB NO.	
	LEFT	CENTER LINE	RIGHT		



372+42
 Fd. R.R. spk.
 2' down
 2 1/2' Lt of ϕ

31

345+97

• 30

29

293+01
 small R.R. spk.
 1" down

28

Co. Rd. # 96

did not find

do not find

Co. Rd. # 97

S.O. Plumbed

There is a c.s. on top of 1'x4" stone, used Period on S.

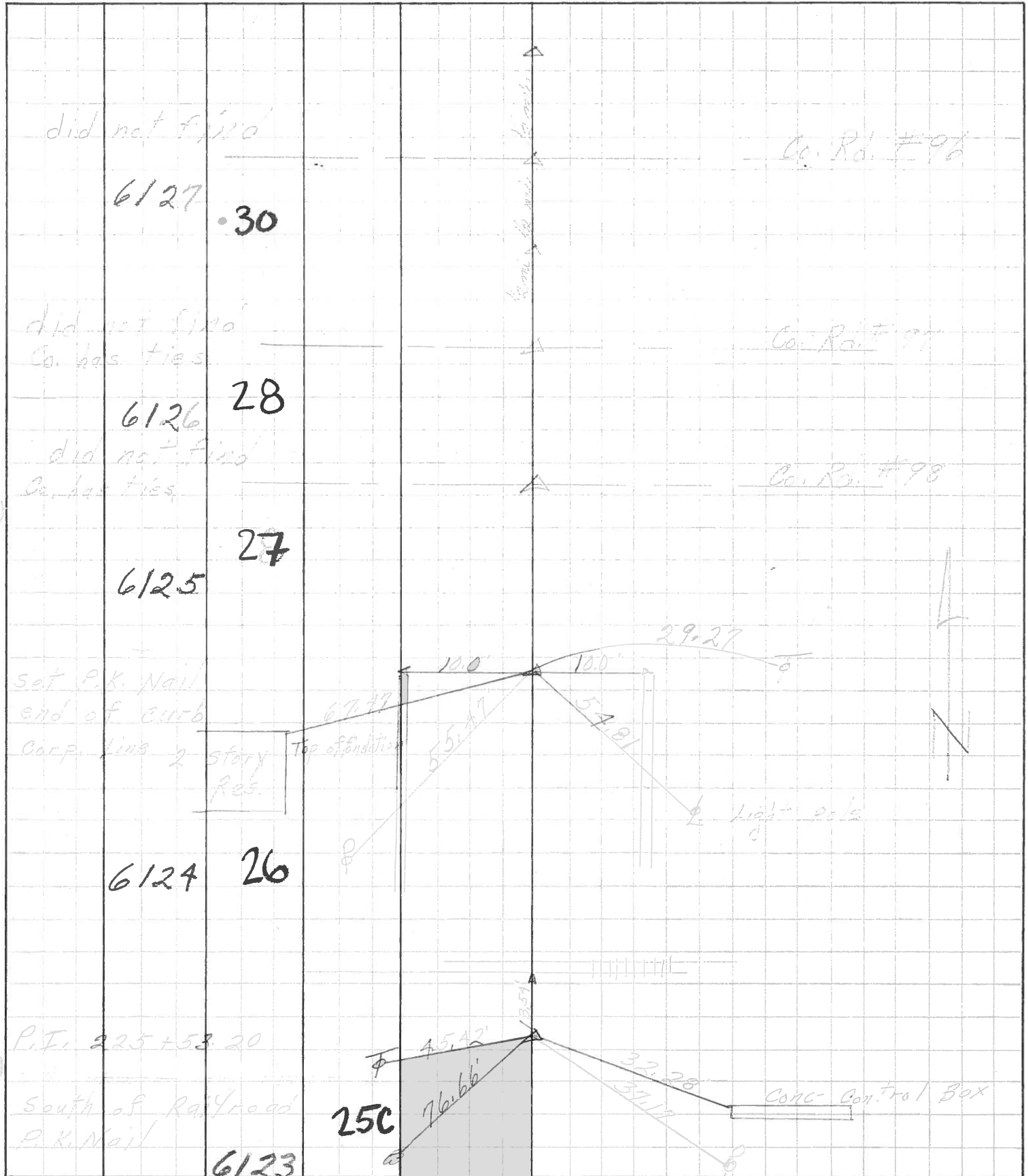
1/2 mile

PERSONNEL	TITLE	PERSONNEL	TITLE
Schneider			
Mosser			
Barbour			
Randling			

COUNTY Ottawa DATE 5-13-68
 S. R. 19 WEATHER Fair
 SEC. Oak Harbor North TEMP. 65°

DESCRIPTION Ties for Control Points JOB NO. _____

LEFT CENTER LINE RIGHT



did not find
 6127 30

Co. Rd. #96

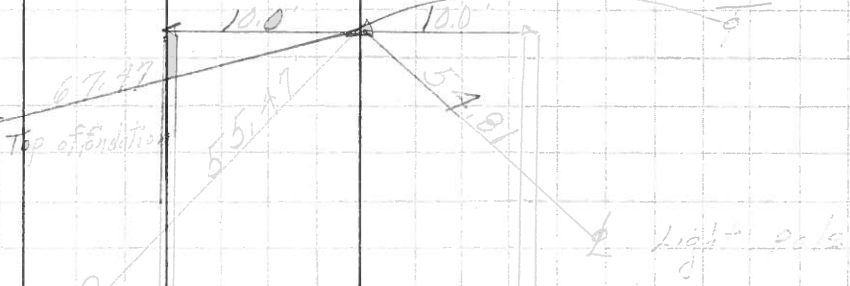
did not find
 Co. has ties
 6126 28

Co. Rd. #97

did not find
 Co. has ties
 6125 27

Co. Rd. #98

Set P.K. Nail
 end of curb
 Corp. line 2 story
 Res.



6124 26
 P.I. 225+53.20



South of Railway road
 P.K. Nail
 6123

26" Maple