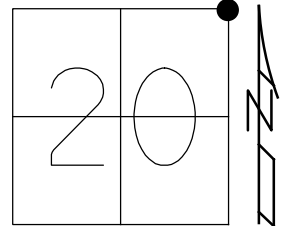


O.D.O.T. DISTRICT 2 SURVEY OFFICE (USE ONLY)

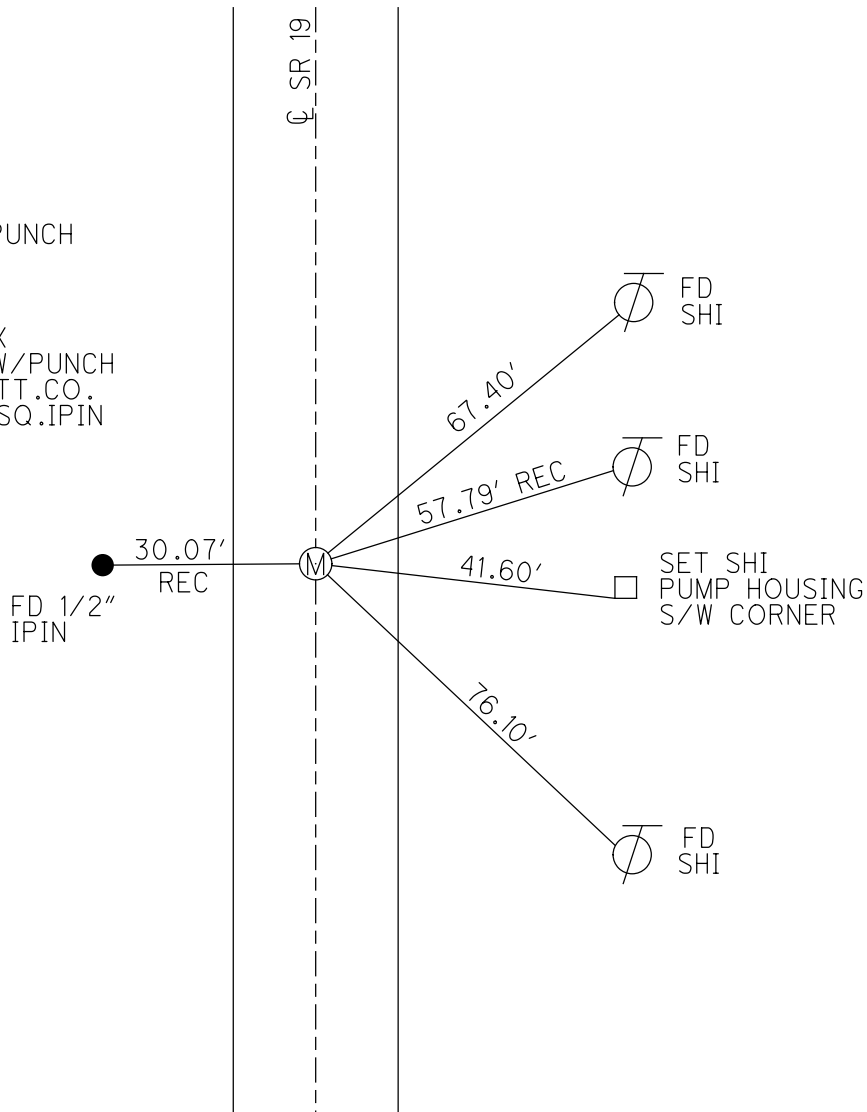
PERSONNEL _____ REFERENCE NO. 31 SHEET 21 OF 29
 NOTES AUBLE DATE 5/12/20 ROUTE SR 19
 H.C. LEU WEATHER SUNNY/WINDY COUNTY OTTAWA
 R.C. BALBAUGH TEMP. 48°F TOWNSHIP CARROLL
 DWG BY NIESE PID 107903 SECTION 20
 T 7 N R 15 E

TYPE MONUMENT MONBOX W/1" SQ.IPIN W/DIMPLE
 ON SURFACE - ~~BELOW~~ ON
 OFFSET \varnothing PAVEMENT 2.4' LT : ~~RT~~
7.0' TO LT EDGE PAVEMENT
 STATION: 372+56



HORIZ.DATUM: NAD83(2011) GEOID: NAVD88 2012A
 GRID: NORTHING: 690381.524 EASTING: 1792032.798

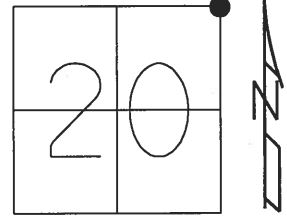
RECORD:
 FD P.K./WASHER
 12/15/03, RGN
 FD R.R.SPIKE
 SET MAG/WASHER
 1/22/09, SAH
 FD P.K./WASHER
 FD R.R.SPIKE W/PUNCH
 0.45' DOWN
 D.N.F. STONE
 SET 1" SQ.IPIN
 IN ROUND MONBOX
 ATOP R.R.SPIKE W/PUNCH
 3/28/10, MC & OTT.CO.
 FD MONBOX W/1" SQ.IPIN
 W/DIMPLE
 REF31
 5/12/20, JLL
 3-23-21, DSA



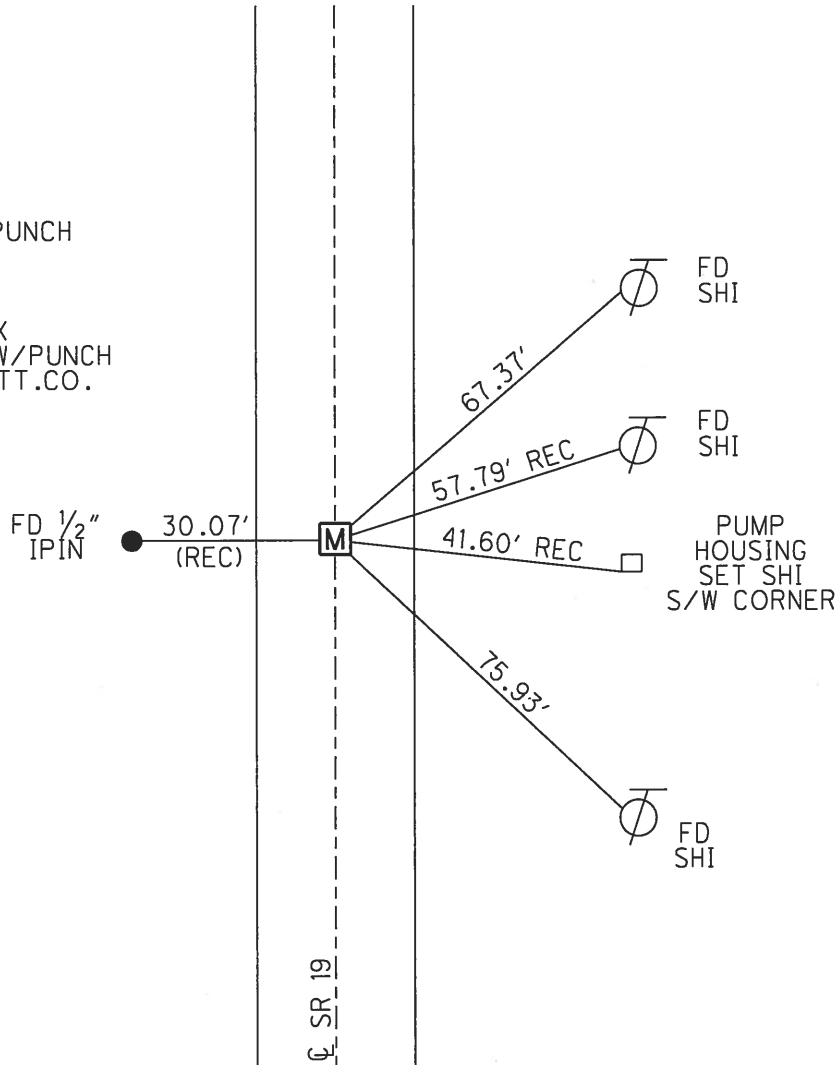
O.D.O.T. DISTRICT 2 SURVEY OFFICE (USE ONLY)

PERSONNEL _____ REFERENCE NO. 31 SHEET 21 OF 29
 NOTES HUSS DATE 3/28/10 ROUTE SR 19
 H.C. CANTERBURY WEATHER SUNNY COUNTY OTTAWA
 R.C. HUSS TEMP. 47° TOWNSHIP CARROLL
 _____ SECTION 20
 _____ T 7 N R 15 E

TYPE MONUMENT MONBOX W/ 1" SQ. IPIN
 ON SURFACE - ~~BELOW~~ ON _____
 LEFT - Q PAV'T - ~~RIGHT~~ 2.4'
7' TO W. EDGE PAVEMENT
 S.L.M. 372+56
 GRID: NORTHING: 690381.516 EASTING: 1792032.775



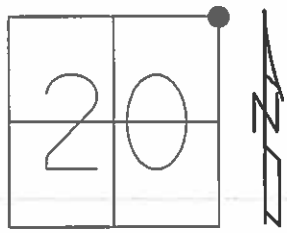
RECORD:
 FD P.K./WASHER
 12/15/03, RGN
 FD R.R.SPIKE
 SET MAG/WASHER
 SV31
 1/22/09, SAH
 FD P.K./WASHER
 FD R.R.SPIKE W/PUNCH
 0.45' DOWN
 D.N.F. STONE
 SET 1" SQ. IPIN
 IN ROUND MONBOX
 ATOP R.R.SPIKE W/PUNCH
 3/28/10, MC & OTT.CO.



O.D.O.T. DISTRICT 2 SURVEY OFFICE (USE ONLY)

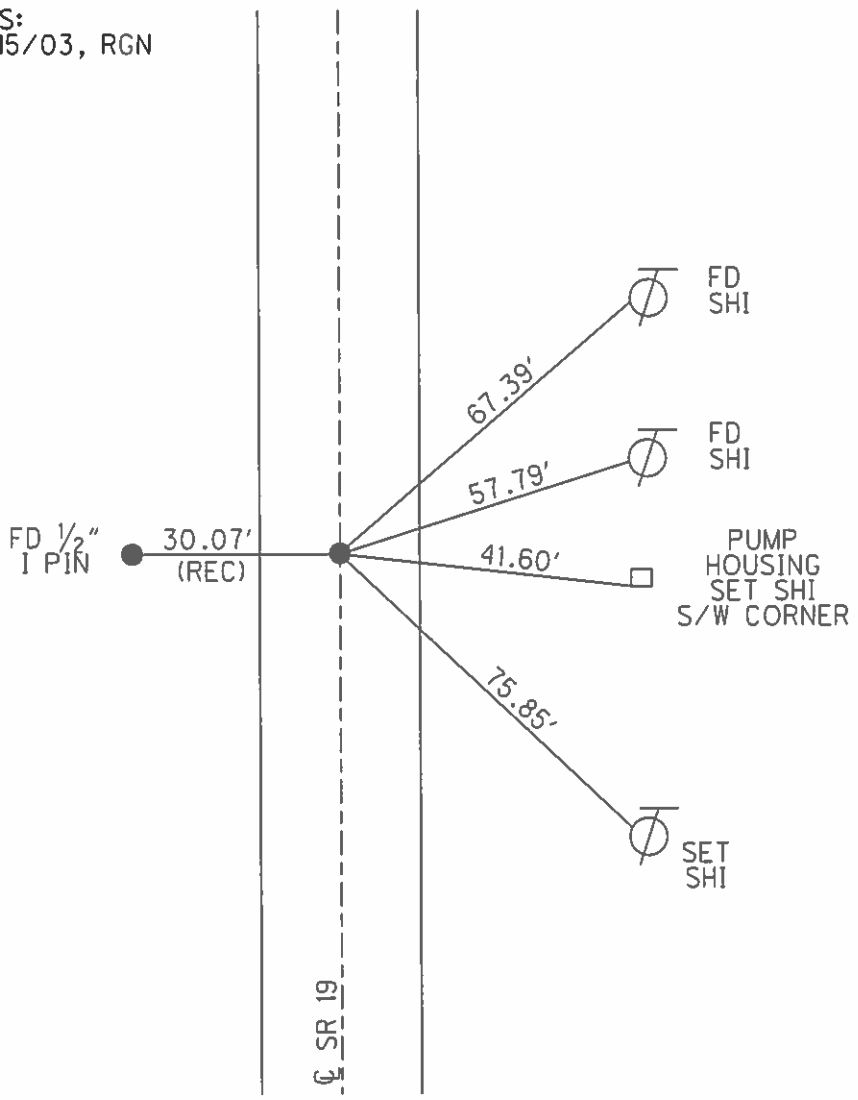
PERSONNEL _____ REFERENCE NO. 31 SHEET 21 OF 29
 NOTES HUSS DATE 6/17/08 ROUTE SR 19
 H.C. RYAN W. WEATHER CLOUDY/WINDY COUNTY OTTAWA
 R.C. NUHFER TEMP. 61° TOWNSHIP CARROLL
 _____ SECTION 20
 _____ T 7 N R 15 E

TYPE MONUMENT P.K./WASHER
 ON SURFACE - ~~BELOW~~ ON _____
 LEFT - ☉ PAV'T - ~~RIGHT~~ 2.5'
7' TO W. EDGE PAVEMENT
 S.L.M. 372+56



GRID: NORTHING: 690381.516 EASTING: 1792032.775

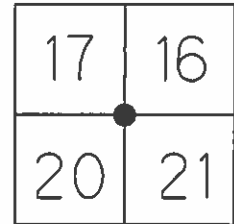
RECORD:
 PREVIOUS MONUMENTS:
 PK/WASHER - FD 12/15/03, RGN
 RR SPK
 SET MAG/W
 1/22/09, SAH
 GPS, SV 2
 7/14/09



O.D.O.T. DISTRICT 2 SURVEY OFFICE (USE ONLY)

PERSONNEL _____ REFERENCE NO. 31 SHEET 25 OF 33
 NOTES HUSS DATE 6-17-08 ROUTE SR 19
 H.C. RYAN W. WEATHER CLOUDY/WINDY COUNTY OTTAWA
 R.C. NUHFER TEMP. 61° TOWNSHIP CARROLL
 SECTION 16,17,20,21
 T 7 N R 15 E

TYPE MONUMENT PK/W
 ON SURFACE - ~~BELOW~~ ON _____
 LEFT - ☉ PAV'T - ~~RIGHT~~ 2.5'
7' TO W. EDGE PAVEMENT
 S.L.M. 372+56

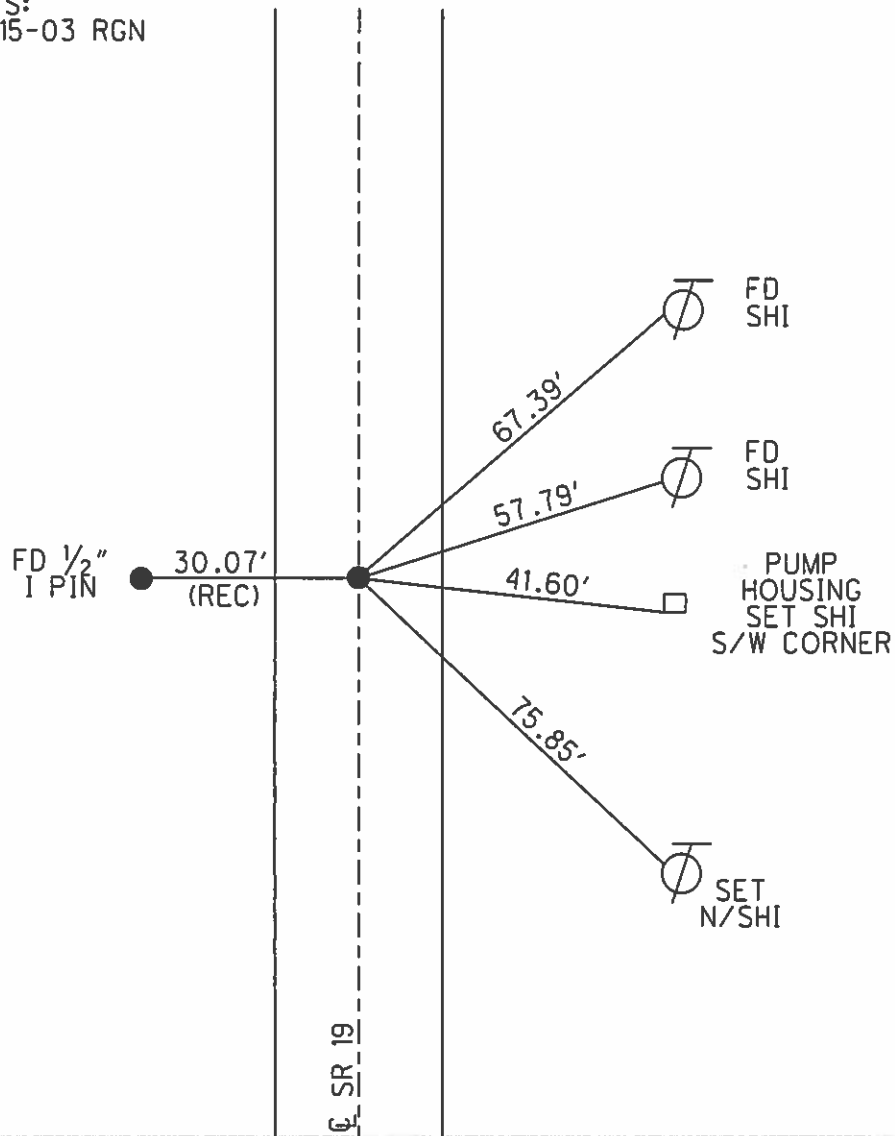


Grid: Northing: 690381.516 Easting: 1792032.775

PREVIOUS MONUMENTS:
 PK/WASHER - FD 12-15-03 RGN
 RR SPK

SET MAG/W
 1-22-09
 SAH

GPS, SV 2
 7-14-09





MAY 19 '93 09:33 4198657195

PROUDFOOT ASSOCIATES

engineers • surveyors • planners
5360 Heatherdowns Blvd.
Toledo, Ohio 43614

JOB 93251G

P. 2/3

SHEET NO. 10

OF 10

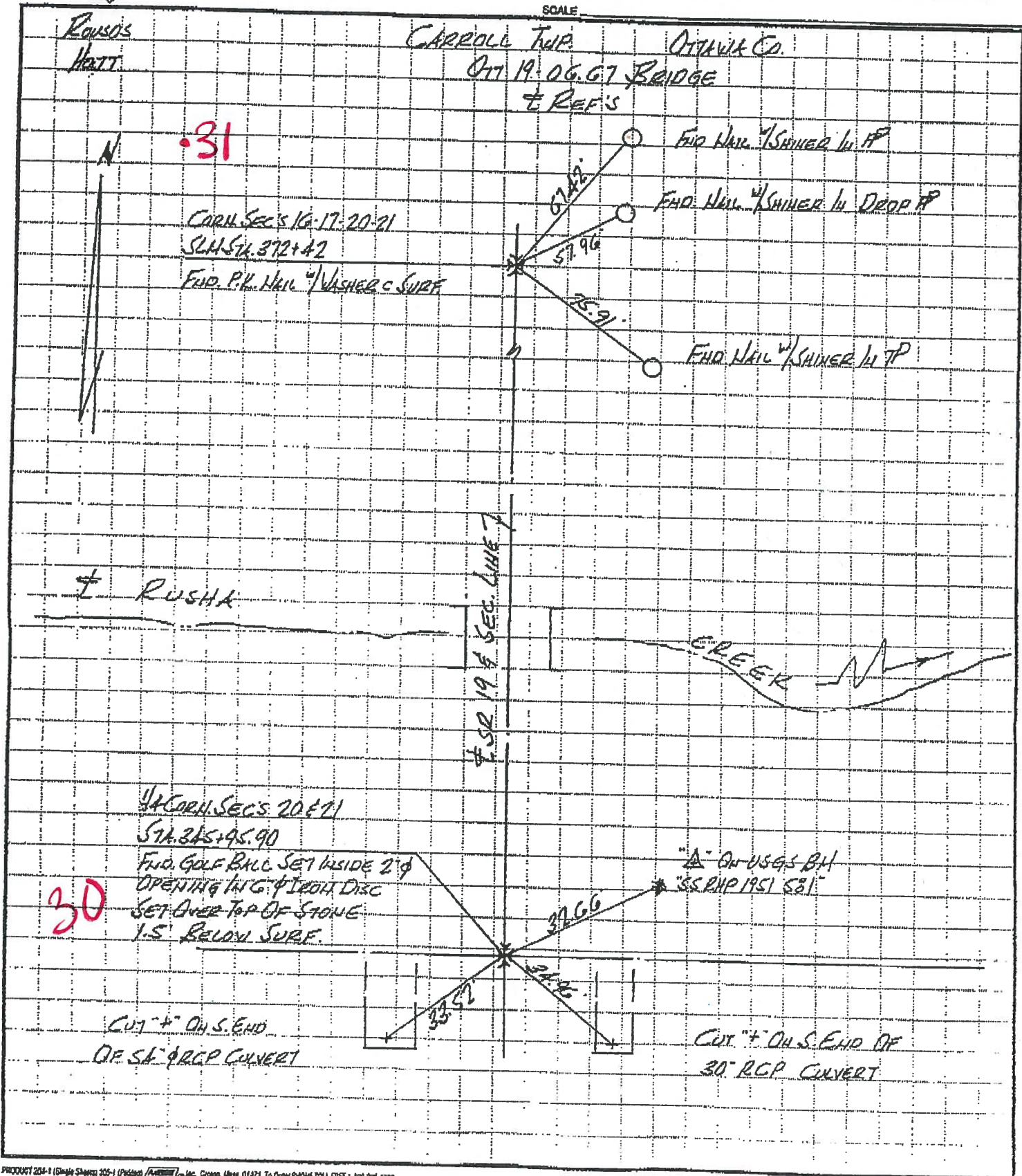
CALCULATED BY _____

DATE 29 APRIL '93

CHECKED BY _____

DATE _____

SCALE _____



ROSSIS
HATT

CARROLL TWP. OTTAWA CO.
DTT 19.06.67 BRIDGE
& REF'S

31

CORN. SEC'S 16-17-20-21
STA. 372+42
END. P.H. NAIL SHINER C SURF



RUSHA

CREEK

SR 19 & SEC. LINE

CORN. SEC'S 20 & 21
STA. 345+95.90
END. GOLF BALL SET INSIDE 2" Ø
OPENING IN G. IRON DISC
SET OVER TOP OF STONE
1.5' BELOW SURF.

30

"A" ON USGS BM
"SS RHP 1951 531"

CUT # ON S. END
OF 30" RCP CULVERT

CUT # ON S. END OF
30" RCP CULVERT

Ref. No. 30

O.D.O.T. DISTRICT 2 SURVEY OFFICE

PERSONNEL _____

REFERENCE NO. 31

SHEET 4 OF 11

NOTES CHENEY

H.C. BARBOUR

R.C. RIPPLE

DATE 10-10-1991

WEATHER SUNNY

TEMP. 60°

ROUTE 19

COUNTY OTTAWA

TOWNSHIP CARROLL

SECTION 16, 17, 20, 21

T. 7 N. R. 15 E.

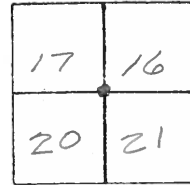
TYPE MONUMENT RE-SET PK/WASHER

ON SURFACE - BELOW

LEFT- & PAV'T. - RIGHT 2.5'

7' TO W. EDGE PAVEMENT

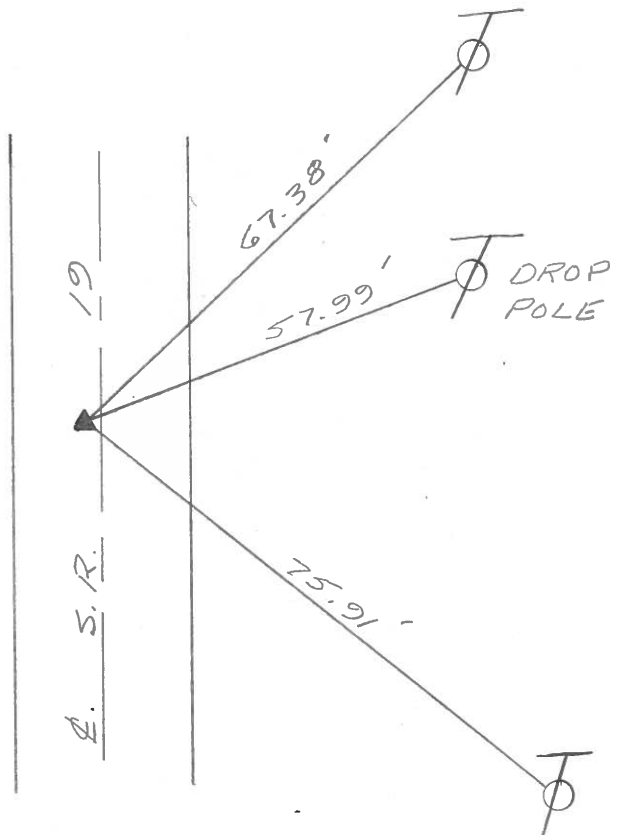
S.L.M. 372+42



PREVIOUS MONUMENTS:

PK/WASHER

R.R. SPK.



PERSONNEL TITLE PERSONNEL TITLE

COUNTY Ottawa DATE 5-4-71

S. R. 19 WEATHER _____

SEC. 29 & 28 - 20 & 21 TEMP. _____

DESCRIPTION Oak Harbour to S.R. #2 JOB NO. _____

LEFT CENTER LINE RIGHT

