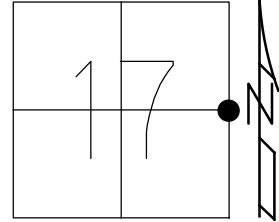


O.D.O.T. DISTRICT 2 SURVEY OFFICE (USE ONLY)

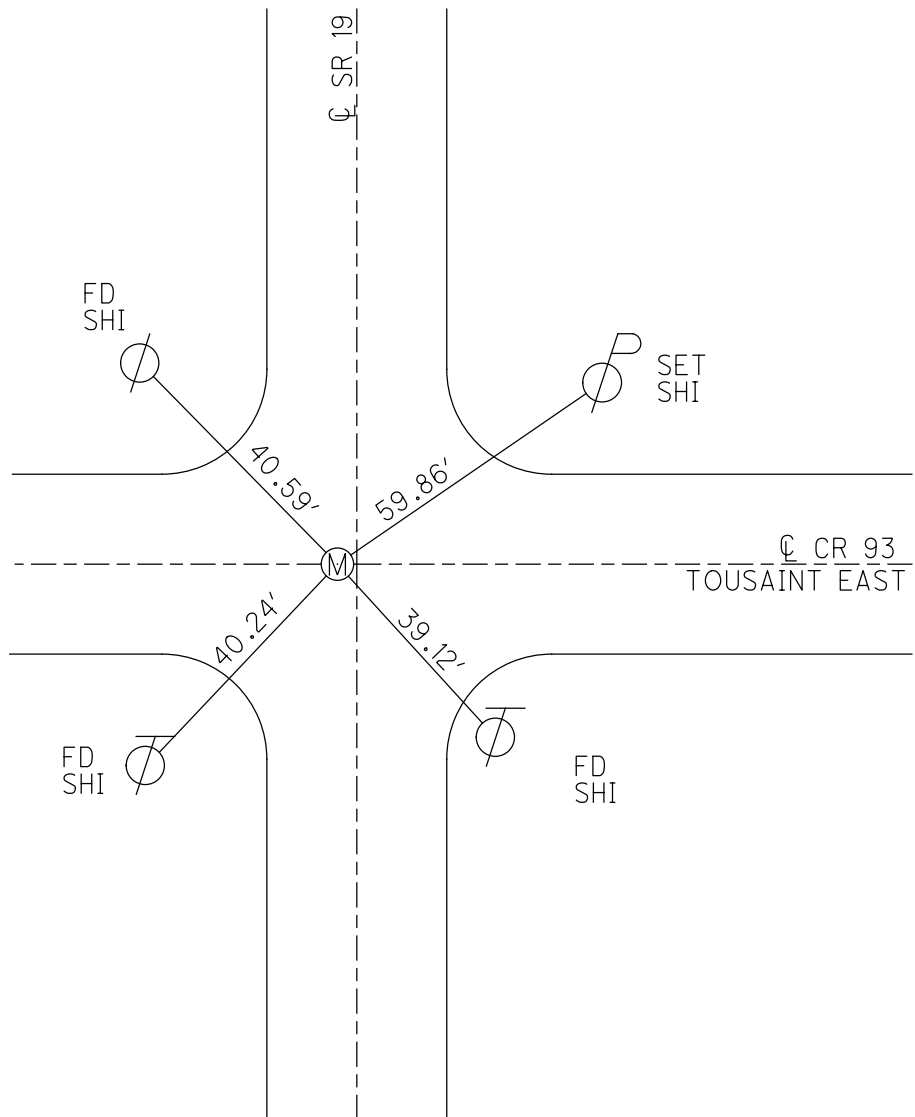
PERSONNEL \_\_\_\_\_ REFERENCE NO. 32 SHEET 22 OF 29  
 NOTES AUBLE DATE 5/12/20 ROUTE SR 19  
 H.C. LEU WEATHER SUNNY/WINDY COUNTY OTTAWA  
 R.C. BALBAUGH TEMP. 48°F TOWNSHIP CARROLL  
 DWG BY MAHLER PID 107903 SECTION 17  
 T 7 N R 15 E

TYPE MONUMENT MONBOX W/1" SQ.IPIN W/DIMPLE  
 ON SURFACE - ~~BELOW~~ ON  
 OFFSET CL PAVEMENT 1.75' LT : ~~R~~  
8.5' TO LT EDGE PAVEMENT  
 STATION: 398+99



HORIZ.DATUM: NAD83(2011) GEOID: NAVD88 2012A  
 GRID: NORTHING: 693021.853 EASTING: 1792026.275

RECORD:  
 FD P.K./WASHER  
 FD R.R.SPIKE  
 FD P.K./WASHER  
 SET MAG/WASHER  
 10/27/09, SAH  
 FD R.R.SPIKE  
 0.64' DOWN  
 FD 1" IRON BOLT  
 0.77' DOWN  
 FD 6 x 7" RECT.  
 FLAT TOP LIMESTONE  
 2' DOWN  
 SET 1" SQ.IPIN  
 IN ROUND MONBOX  
 ATOP STONE  
 3/29/10, MC & OTT.CO.  
 FD MONBOX W/1" SQ.IPIN  
 W/DIMPLE  
 REF32 5/12/20, JLL  
 3-23-21, DSA

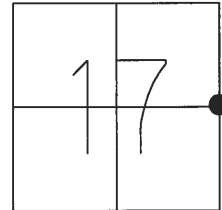


O.D.O.T. DISTRICT 2 SURVEY OFFICE (USE ONLY)

PERSONNEL \_\_\_\_\_ REFERENCE NO. 32 SHEET 22 OF 29

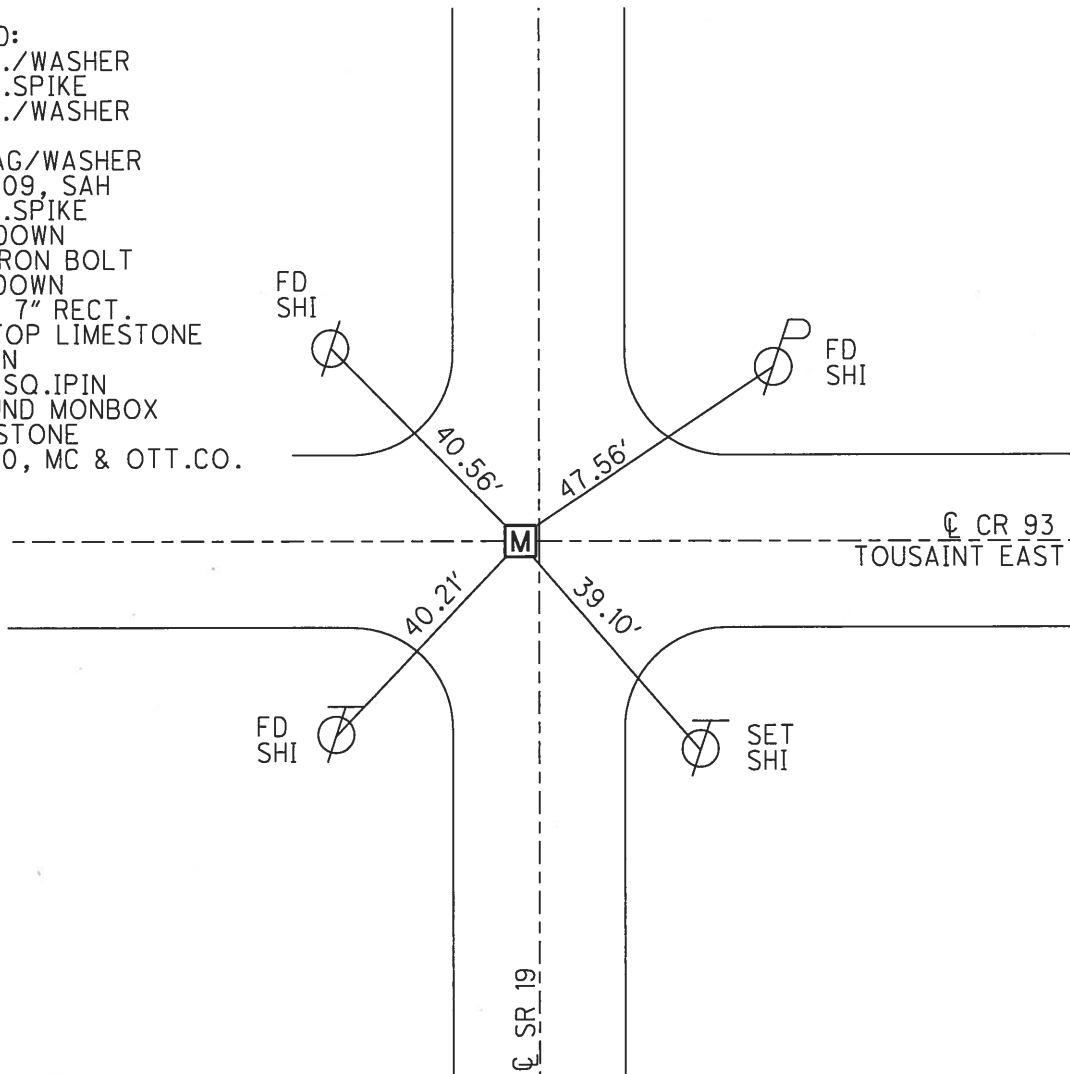
NOTES HUSS DATE 3/29/10 ROUTE SR 19  
 H.C. CANTERBURY WEATHER SUNNY COUNTY OTTAWA  
 R.C. HUSS TEMP. 59° TOWNSHIP CARROLL  
 SECTION 17  
 T 7 N R 15 E

TYPE MONUMENT MONBOX W/ 1" SQ. IPIN  
 ON SURFACE - ~~BELOW~~ ON  
 LEFT - ☉ PAV'T - ~~RIGHT~~ 1.75'  
8.5' TO W EDGE PAVEMENT  
 S.L.M. 398+99



GRID: NORTHING: 693021.582 Easting: 1792026.225

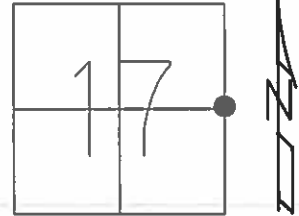
RECORD:  
 FD P.K./WASHER  
 FD R.R.SPIKE  
 FD P.K./WASHER  
 SV32  
 SET MAG/WASHER  
 10/27/09, SAH  
 FD R.R.SPIKE  
 0.64' DOWN  
 FD 1" IRON BOLT  
 0.77' DOWN  
 FD 6 x 7" RECT.  
 FLAT TOP LIMESTONE  
 2' DOWN  
 SET 1" SQ. IPIN  
 IN ROUND MONBOX  
 ATOP STONE  
 3/29/10, MC & OTT.CO.



O.D.O.T. DISTRICT 2 SURVEY OFFICE (USE ONLY)

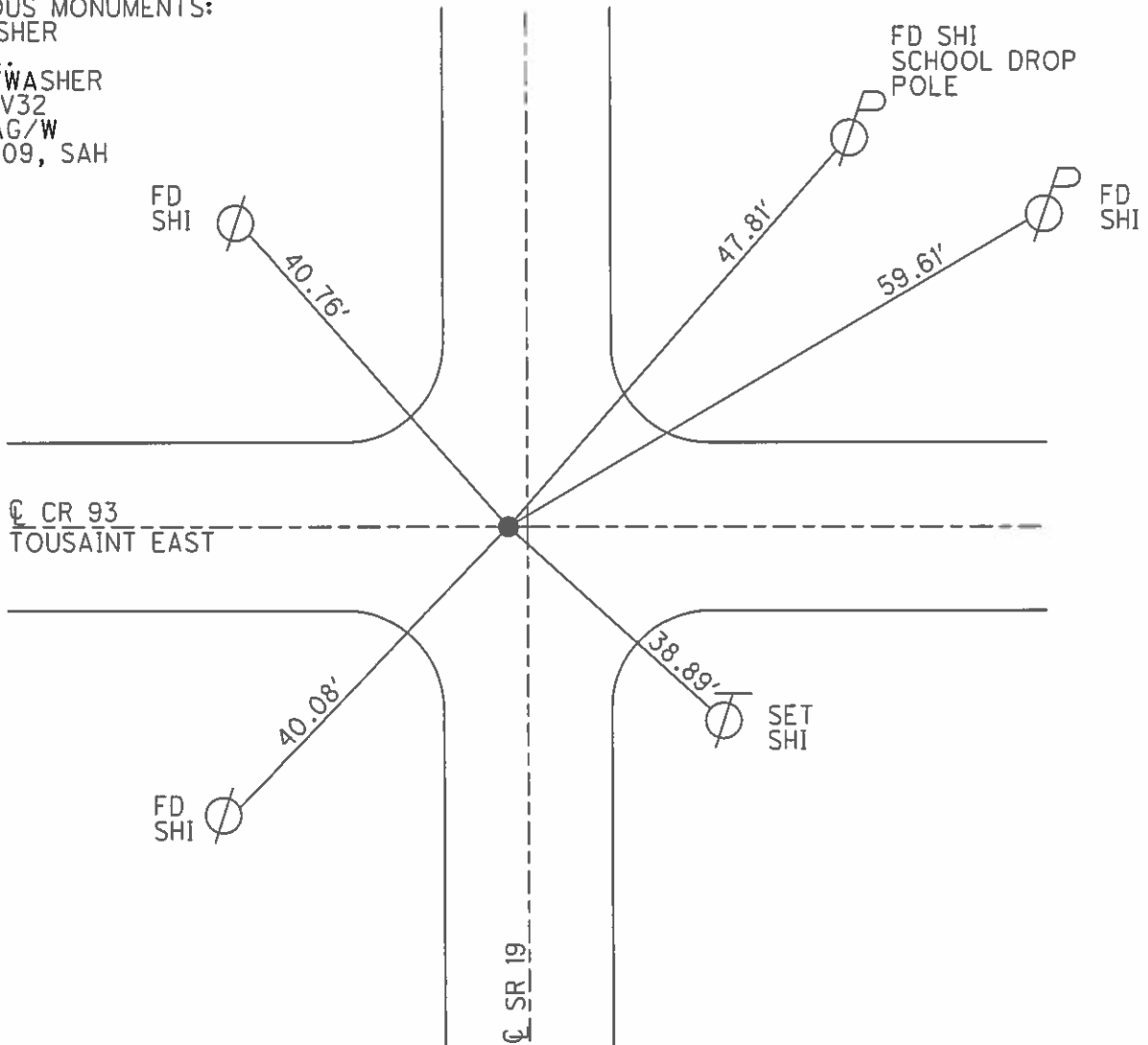
PERSONNEL \_\_\_\_\_ REFERENCE NO. 32 SHEET 22 OF 29  
 NOTES HUSS DATE 6/18/08 ROUTE SR 19  
 H.C. MOSER WEATHER CLOUDY COUNTY OTTAWA  
 R.C. CANTERBURY TEMP. 60° TOWNSHIP CARROLL  
 \_\_\_\_\_ SECTION 17  
 \_\_\_\_\_ T 7 N R 15 E

TYPE MONUMENT RESET PK/WASHER  
 ON SURFACE - ~~BELOW~~ ON \_\_\_\_\_  
 LEFT - ☉ PAV'T - ~~RIGHT~~ 1.5'  
8.5' TO W EDGE PAVEMENT  
 S.L.M. \_\_\_\_\_ 398+99



GRID: NORTHING: 693021.582 Easting: 1792026.225

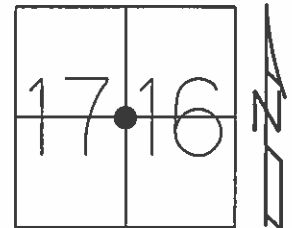
RECORD:  
 PREVIOUS MONUMENTS:  
 PK/WASHER  
 RR SPK.  
 FD PK/WASHER  
 GPS, SV32  
 SET MAG/W  
 10/27/09, SAH



O.D.O.T. DISTRICT 2 SURVEY OFFICE (USE ONLY)

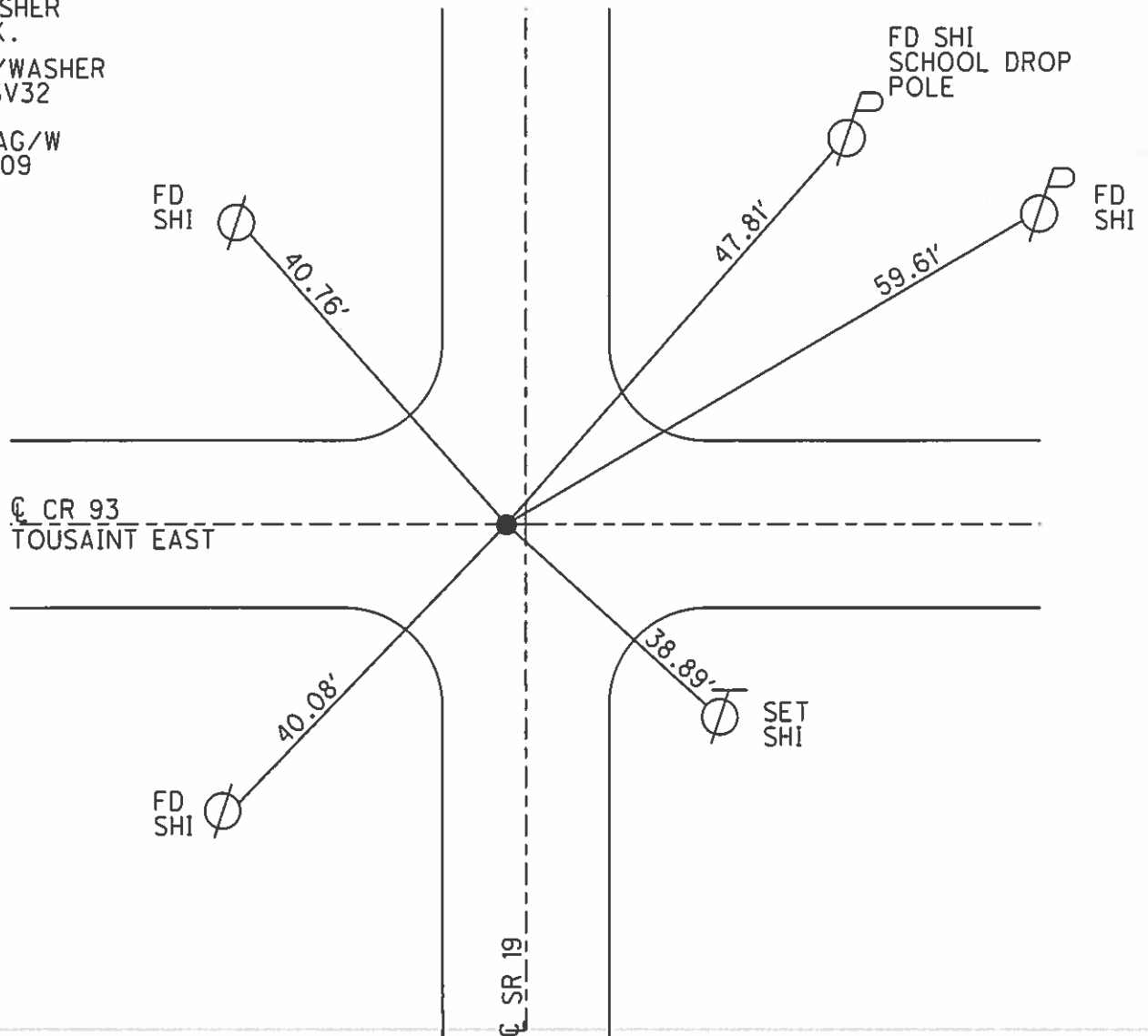
PERSONNEL \_\_\_\_\_ REFERENCE NO. 32 SHEET 26 OF 33  
 NOTES HUSS DATE 6-18-08 ROUTE SR 19  
 H.C. MOSER WEATHER CLOUDY COUNTY OTTAWA  
 R.C. CANTERBURY TEMP. 60° TOWNSHIP CARROLL  
 \_\_\_\_\_ SECTION 11  
 \_\_\_\_\_ T 7 N R 15 E

TYPE MONUMENT RESET PK/WASHER  
 ON SURFACE - ~~BELOW~~ ON  
 LEFT - ☉ PAV'T - ~~RIGHT~~ 1.5'  
8.5' TO W EDGE PAVEMENT  
 S.L.M. 398+99



Grid: Northing: 693021.582 Easting: 1792026.225

PREVIOUS MONUMENTS:  
 PK/WASHER  
 RR SPK.  
 FD PK/WASHER  
 GPS, SV32  
 SET MAG/W  
 10-27-09  
 SAH



# O.D.O.T. DISTRICT 2 SURVEY OFFICE

PERSONNEL \_\_\_\_\_

REFERENCE NO. 32

SHEET 5 OF 11

NOTES CHENEY

H.C. BARBOUR

DATE 10-10-1991

ROUTE 19

R.C. \_\_\_\_\_

WEATHER SUNNY

COUNTY OTTAWA

TEMP. 60°

TOWNSHIP CARROLL

SECTION 16 & 17

T7 N R 15 E

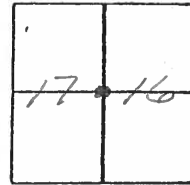
TYPE MONUMENT RE-SET PK/WASHER

ON SURFACE - BELOW

LEFT - CL PAV'T. - RIGHT 1.5'

8.5 TO W. EDGE PAVEMENT

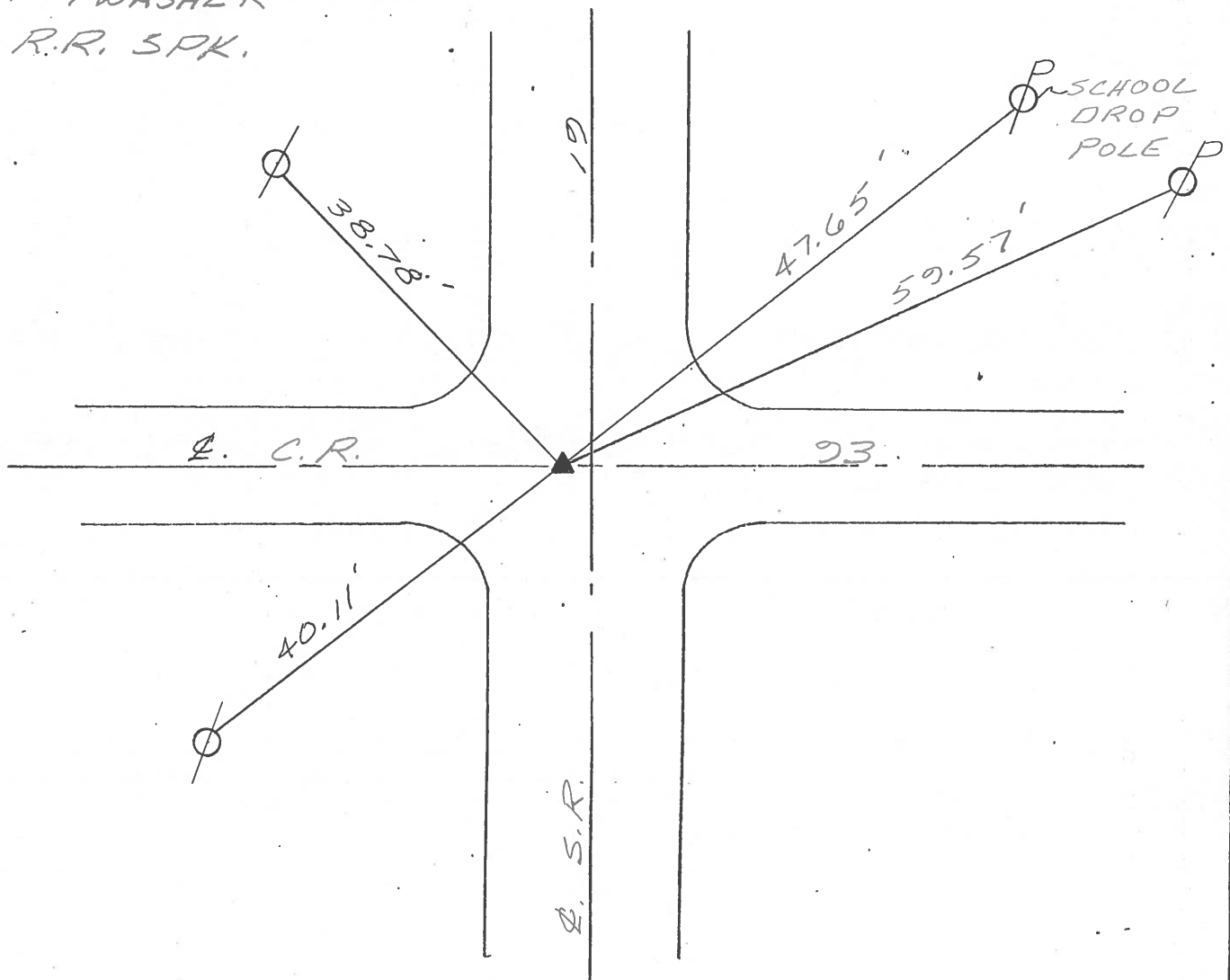
S.L.M. 393+05



PREVIOUS MONUMENTS:

PK/WASHER

R.R. SPK.



PERSONNEL \_\_\_\_\_ TITLE \_\_\_\_\_ PERSONNEL \_\_\_\_\_ TITLE \_\_\_\_\_  
 COUNTY Ottawa DATE 5-6-71  
 S. R. 19 WEATHER \_\_\_\_\_  
 SEC. 17&16-8&9 TEMP. \_\_\_\_\_  
 DESCRIPTION Oak Harbor to S.R. # 2 JOB NO. \_\_\_\_\_

LEFT CENTER LINE RIGHT

P. o. T.  
 443+86  
 & survey & const.

did not find

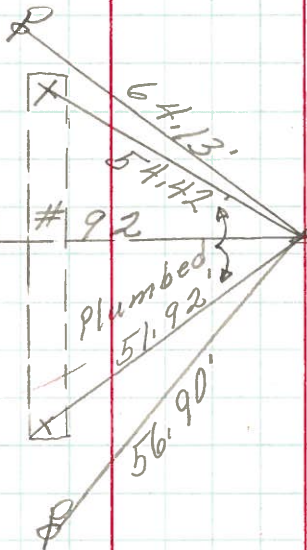


South Bridge Abut.

34

424+85.88  
 $\Delta = 0^{\circ}05' RT.$   
 Small R.R. spk.  
 1 1/2" down  
 & survey & const.

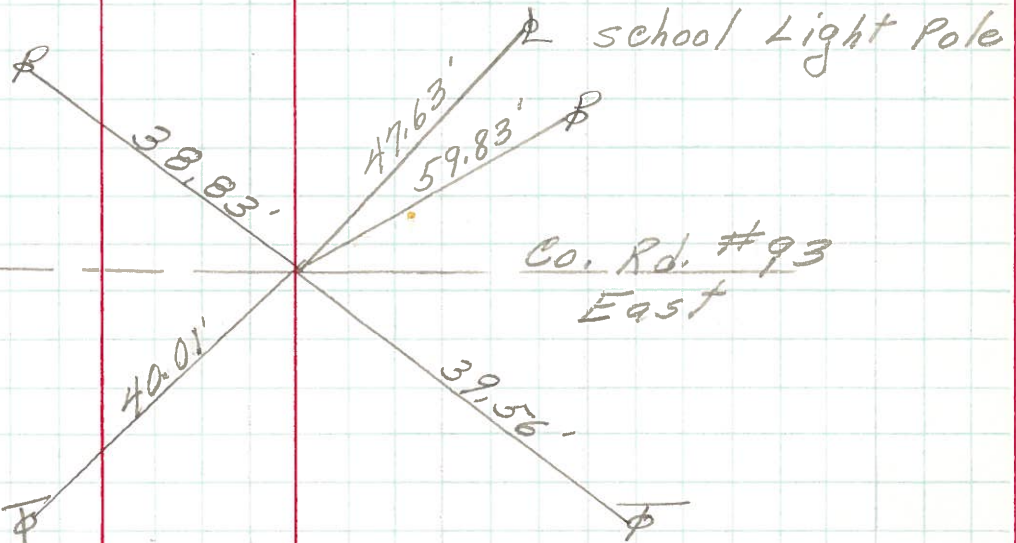
Co. Rd. #92



28.94' U.S.G.S.

33

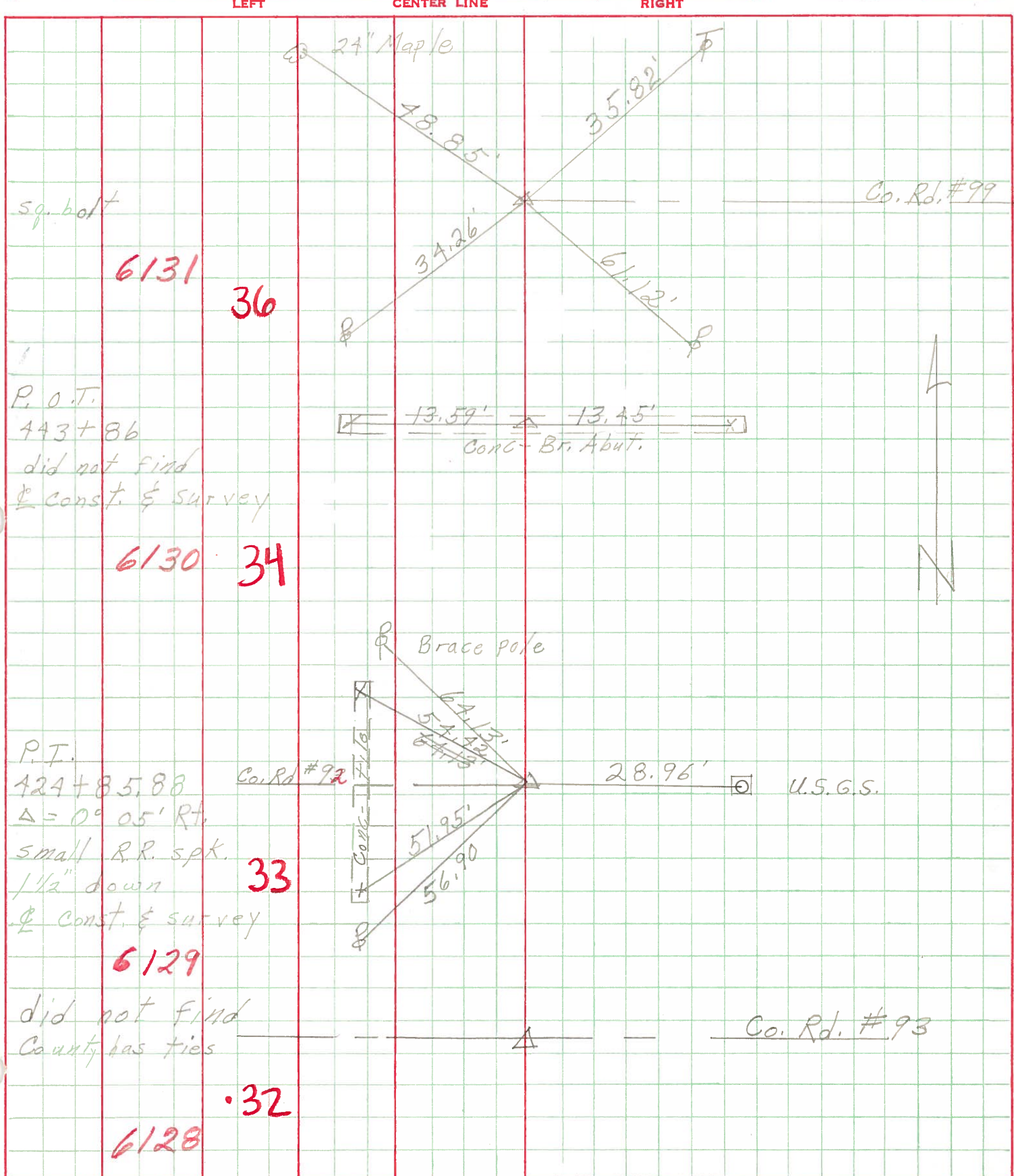
Fd. R.R. spk.  
 2" down



• 32

PERSONNEL	TITLE	PERSONNEL	TITLE	COUNTY	DATE	WEATHER	TEMP.
Schneider		Potts		Ottawa	5-15-68	Partly cloudy	70°
Mosser				S. R. 19			
Barbour				SEC. Oak Harbor-North			
Redding							

DESCRIPTION Ties for Control Points JOB NO. \_\_\_\_\_



sq. bolt

6131 36

P.O.T.  
443+86  
did not find  
const. & survey

6130 34

P.T.  
424+85.88  
Co. Rd. #92  
Δ = 0° 05' Rt.  
small R.R. spk.  
1/2" down  
const. & survey

6129 33

did not find  
County has ties

6128 32

Co. Rd. #99

13.59' 13.45'  
CONC. BR. ABUT.

Co. Rd. #92

U.S.G.S.

Co. Rd. #93