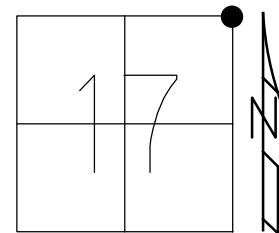


O.D.O.T. DISTRICT 2 SURVEY OFFICE (USE ONLY)

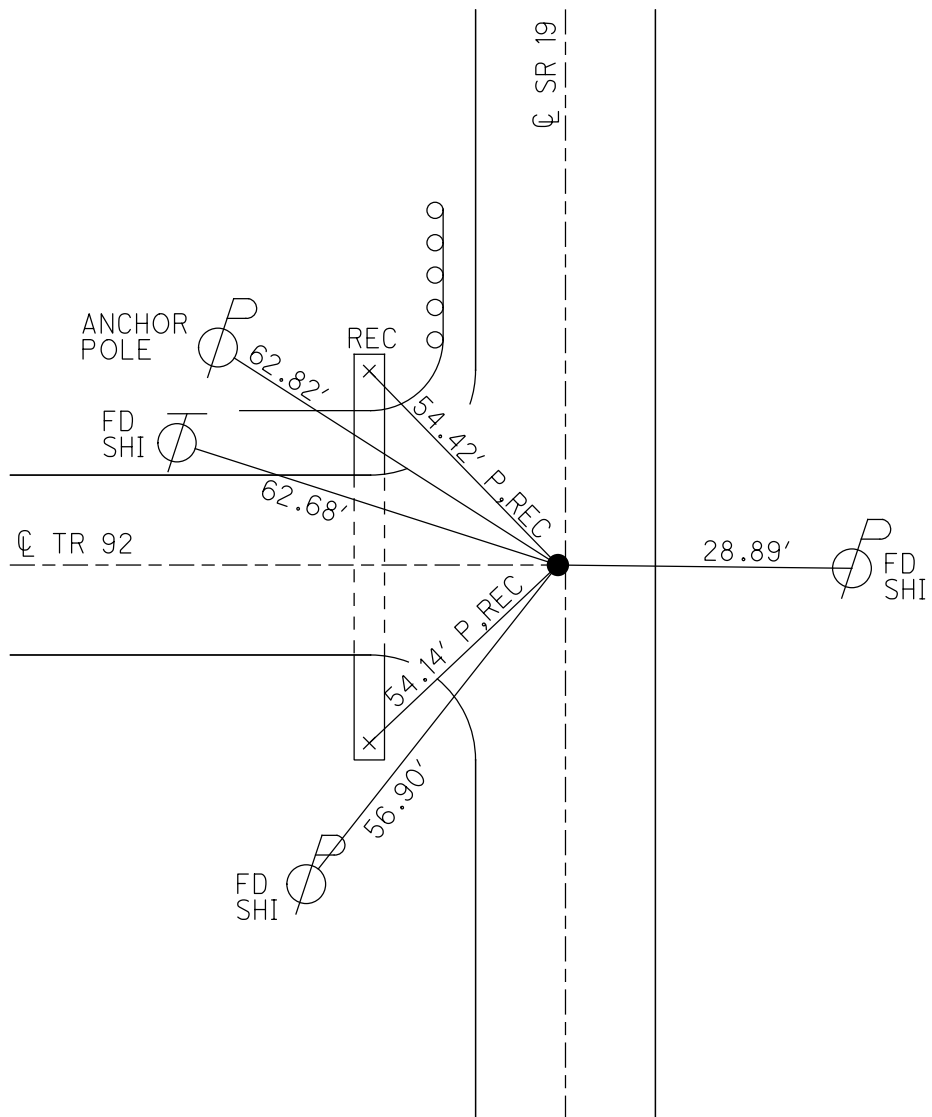
PERSONNEL _____ REFERENCE NO. 33 SHEET 23 OF 29
 NOTES AUBLE DATE 5/12/20 ROUTE SR 19
 H.C. LEU WEATHER SUNNY/WINDY COUNTY OTTAWA
 R.C. BALBAUGH TEMP. 48°F TOWNSHIP CARROLL
 DWG BY NIESE PID 107903 SECTION 17
 T 7 N R 15 E

TYPE MONUMENT MAG/WASHER
 ON SURFACE - ~~BELOW~~ ON
 OFFSET \odot PAVEMENT 0.4' LT : ~~RT~~
9.2' TO LT EDGE PAVEMENT
 STATION: 425+18



HORZ. DATUM: NAD83(2011) GEOID: NAVD88 2012A
 GRID: NORTHING: 695632.687 EASTING: 1792038.915

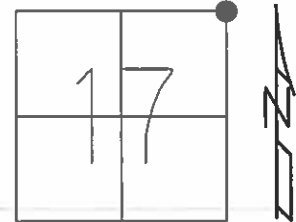
RECORD:
 SM.R,R,SPIKE
 BOAT SPIKE/WASHER
 SET P.K./WASHER
 10/10/91, SAH
 FD P.K./WASHER
 6/18/08
 SET MAG/WASHER
 10/27/09, SAH
 FD MAG/WASHER
 REF33 5/12/20, JLL
 SET MAG/WASHER
 3-23-21, DSA



O.D.O.T. DISTRICT 2 SURVEY OFFICE (USE ONLY)

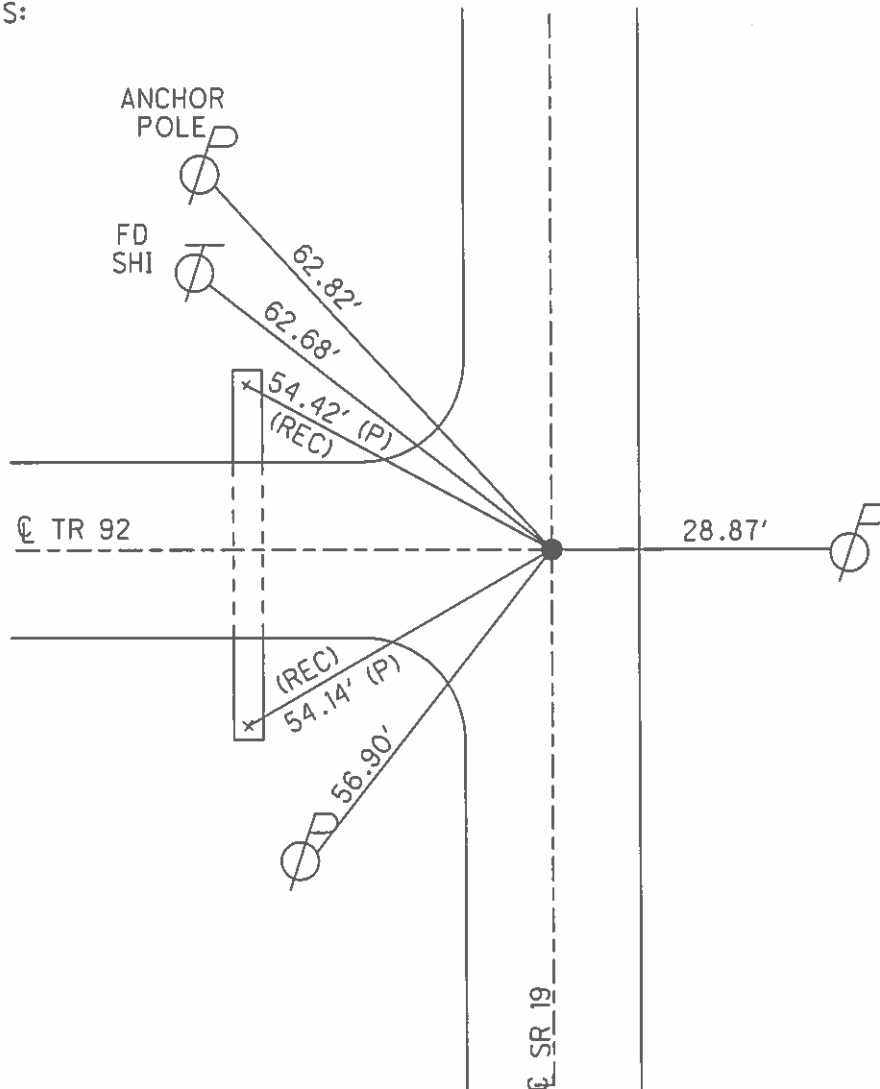
PERSONNEL _____ REFERENCE NO. 33 SHEET 23 OF 29
 NOTES HUSS DATE 6/18/08 ROUTE SR 19
 H.C. MARK WEATHER CLOUDY/FAIR COUNTY OTTAWA
 R.C. KEVIN TEMP. 60° TOWNSHIP CARROLL
 _____ SECTION 17
 _____ T 7 N R 15 E

TYPE MONUMENT PK/WASHER
 ON SURFACE - ~~BELOW~~ ON _____
 LEFT - ☉ PAV'T - ~~RIGHT~~ 0.4'
9.2' TO W EDGE PAVEMENT
 S.L.M. 425+18



GRID: NORTHING: 695632.721 EASTING: 1792038.861

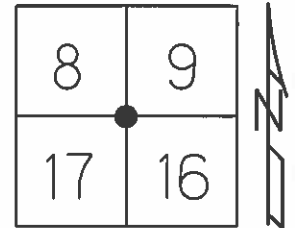
RECORD:
 PREVIOUS MONUMENTS:
 SM RR SPK.
 BOAT SPK./WASHER
 RESET P.K./WASHER
 GPS, SV33
 10/10/91, SAH
 SET MAG/W
 10/27/09, SAH



O.D.O.T. DISTRICT 2 SURVEY OFFICE (USE ONLY)

PERSONNEL _____ REFERENCE NO. 33 SHEET 27 OF 33
 NOTES HUSS DATE 6-18-08 ROUTE SR 19
 H.C. MARK WEATHER CLOUDY/FAIR COUNTY OTTAWA
 R.C. KEVIN TEMP. 60° TOWNSHIP CARROLL
 _____ SECTION 8,9,16,17
 _____ T 7 N R 15 E

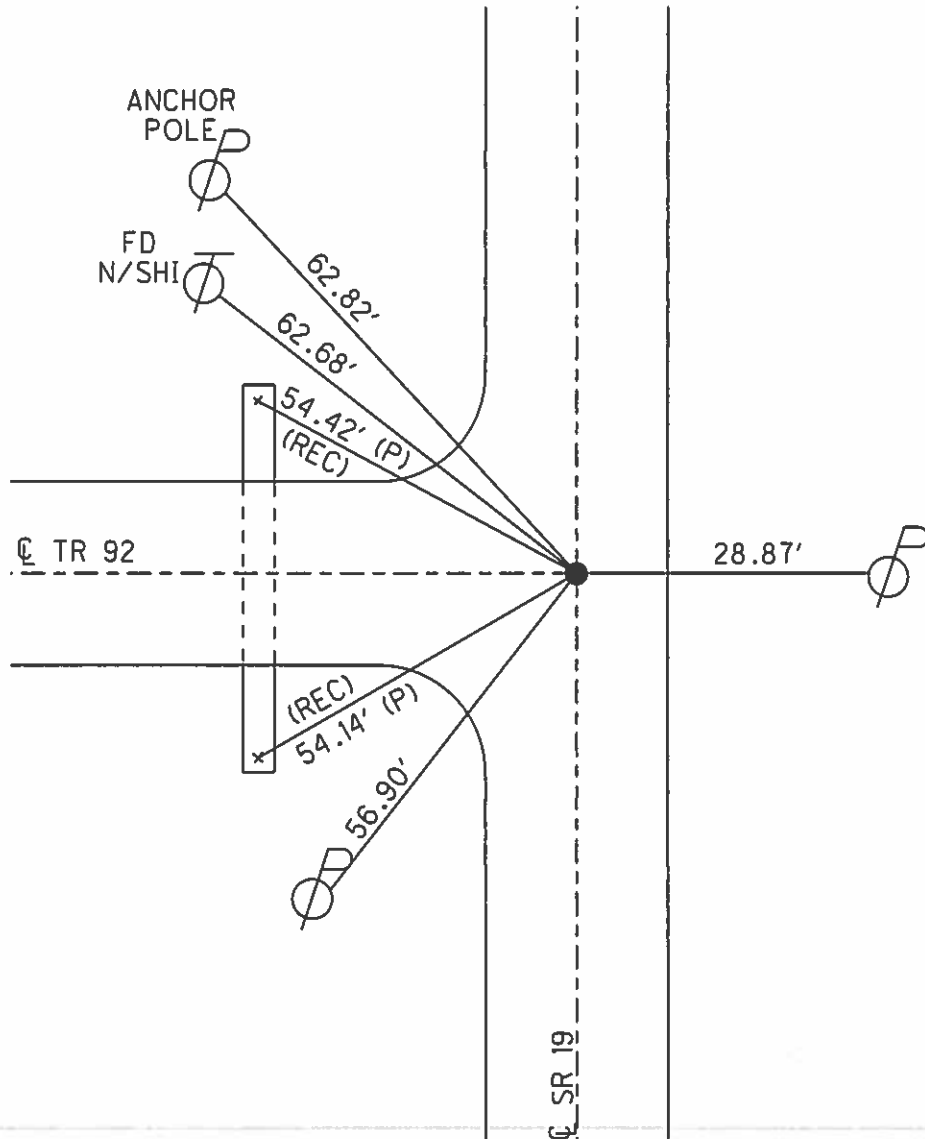
TYPE MONUMENT PK/WASHER
 ON SURFACE - ~~BELOW~~ ON
 LEFT - ☉ PAV'T - ~~RIGHT~~ 0.4' LEFT
9.2' TO W. EDGE PAVEMENT
 S.L.M. 425+18



Grid: Northing: 695632.721 Easting: 1792038.861

PREVIOUS MONUMENTS:

- SM RR SPK.
- BOAT SPK./WASHER
- RESET PK/WASHER
- GPS, SV33
- 10-10-91, SAH
- SET MAG/W
- 10-27-09
- SAH



O.D.O.T. DISTRICT 2 SURVEY OFFICE

PERSONNEL

REFERENCE NO. 33

SHEET 6 OF 11

NOTES CHEHEY

H.C. BARBOUR

DATE 10-10-1991

ROUTE 19

R.C. RIPPLE

WEATHER CLOUDY

COUNTY OTTAWA

TEMP. 60°

TOWNSHIP CARROLL

SECTION 8, 9, 16, 17

T7 NR 1 5 E

TYPE MONUMENT RE-SET PK/WASHER

ON SURFACE - BELOW

~~EST~~ - E PAV'T. - RIGHT

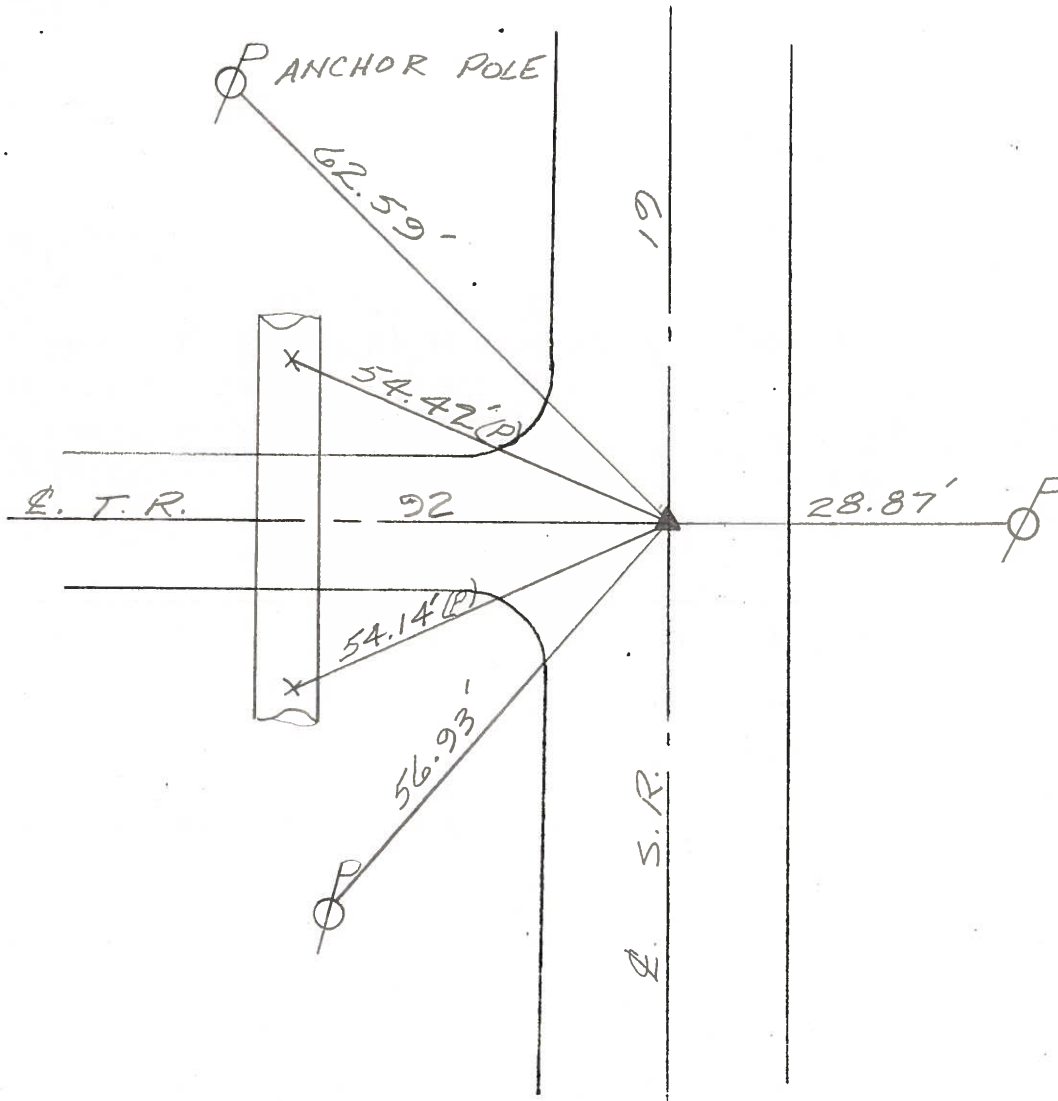
10' TO W. EDGE PAVEMENT.

S.L.M. 424+85.88 (RECORD STA.)

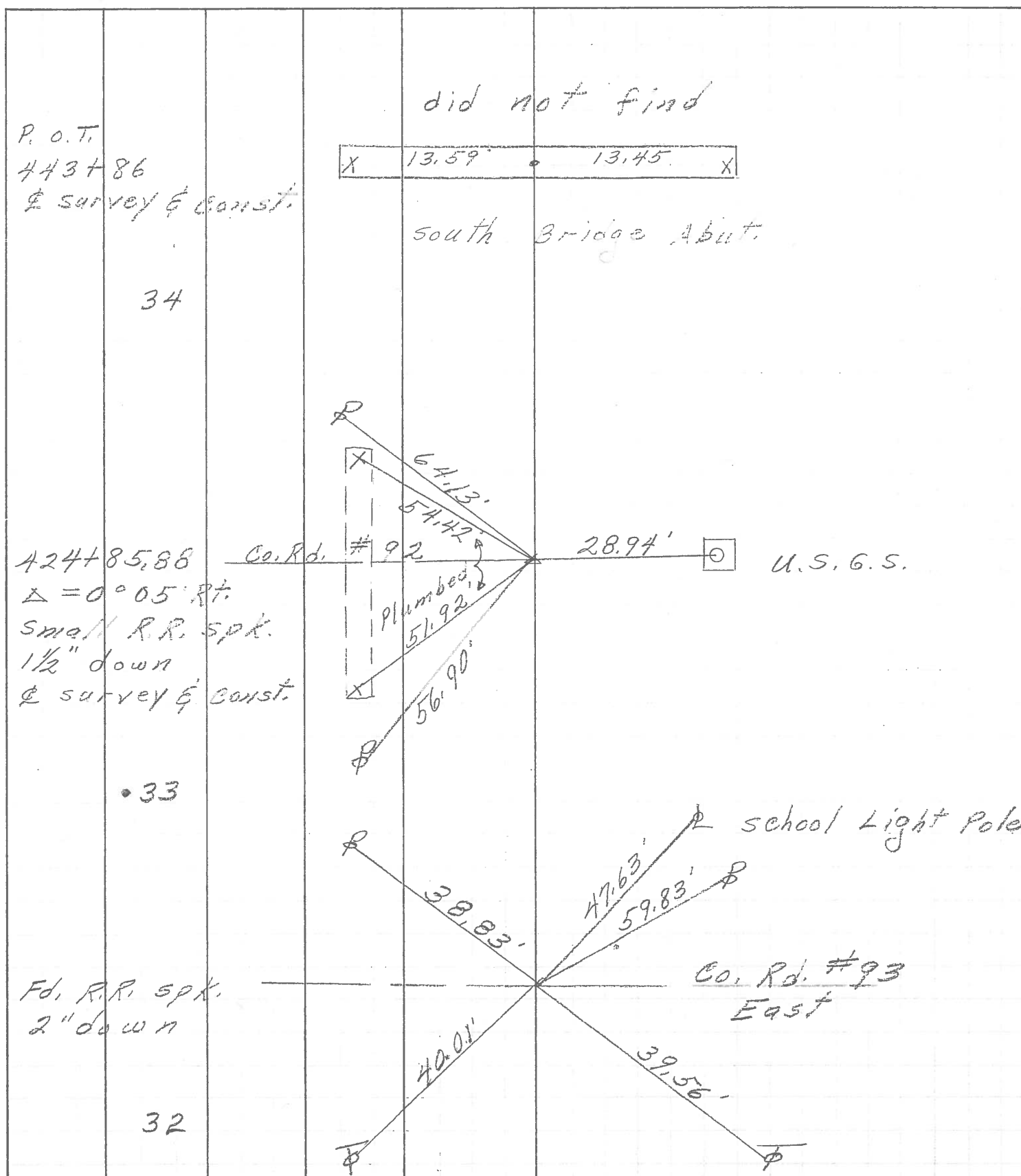
8	9
17	16



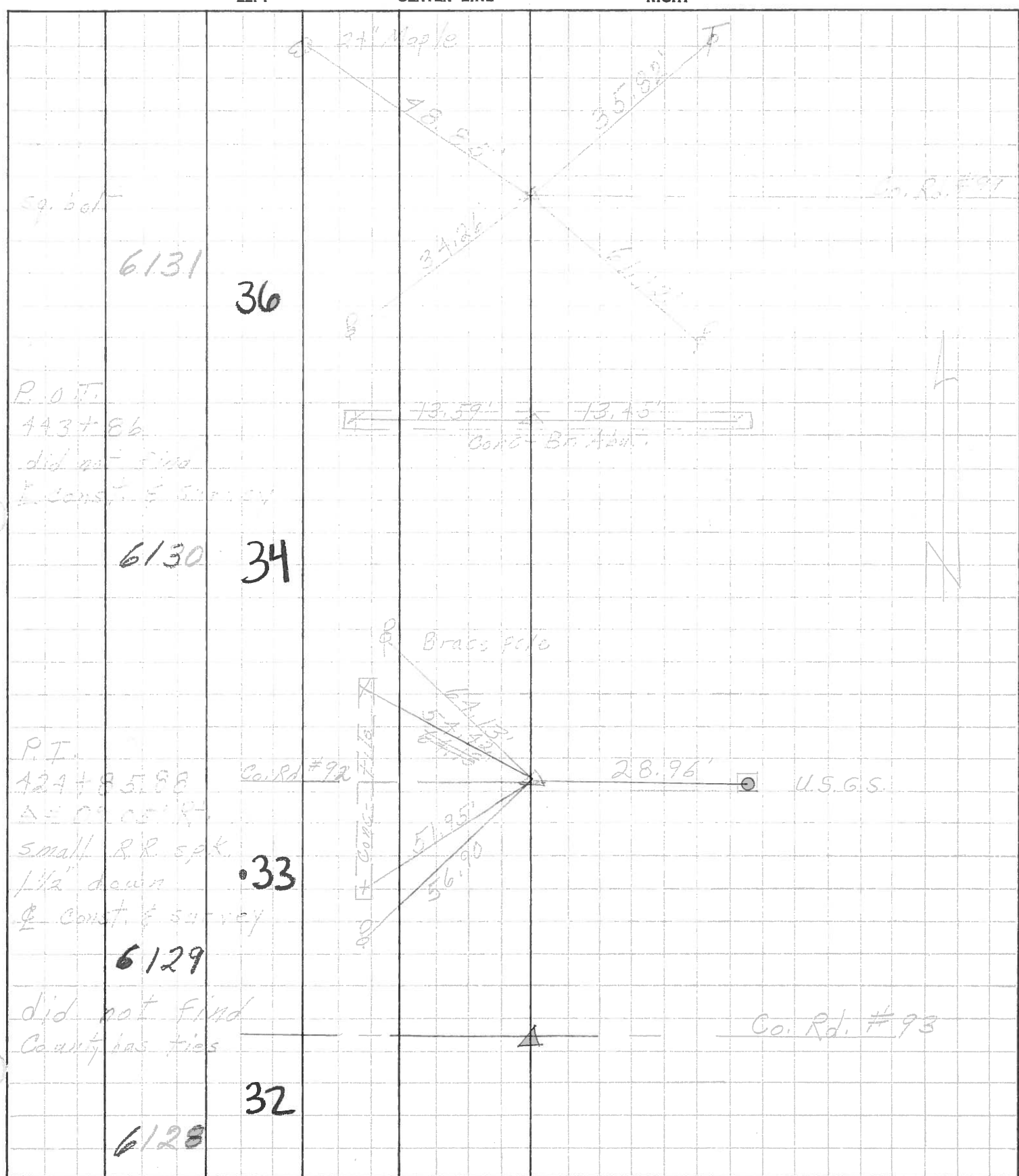
PREVIOUS MONUMENTS:
 SM. R.R. SPK.
 BOAT SPK./WASHER



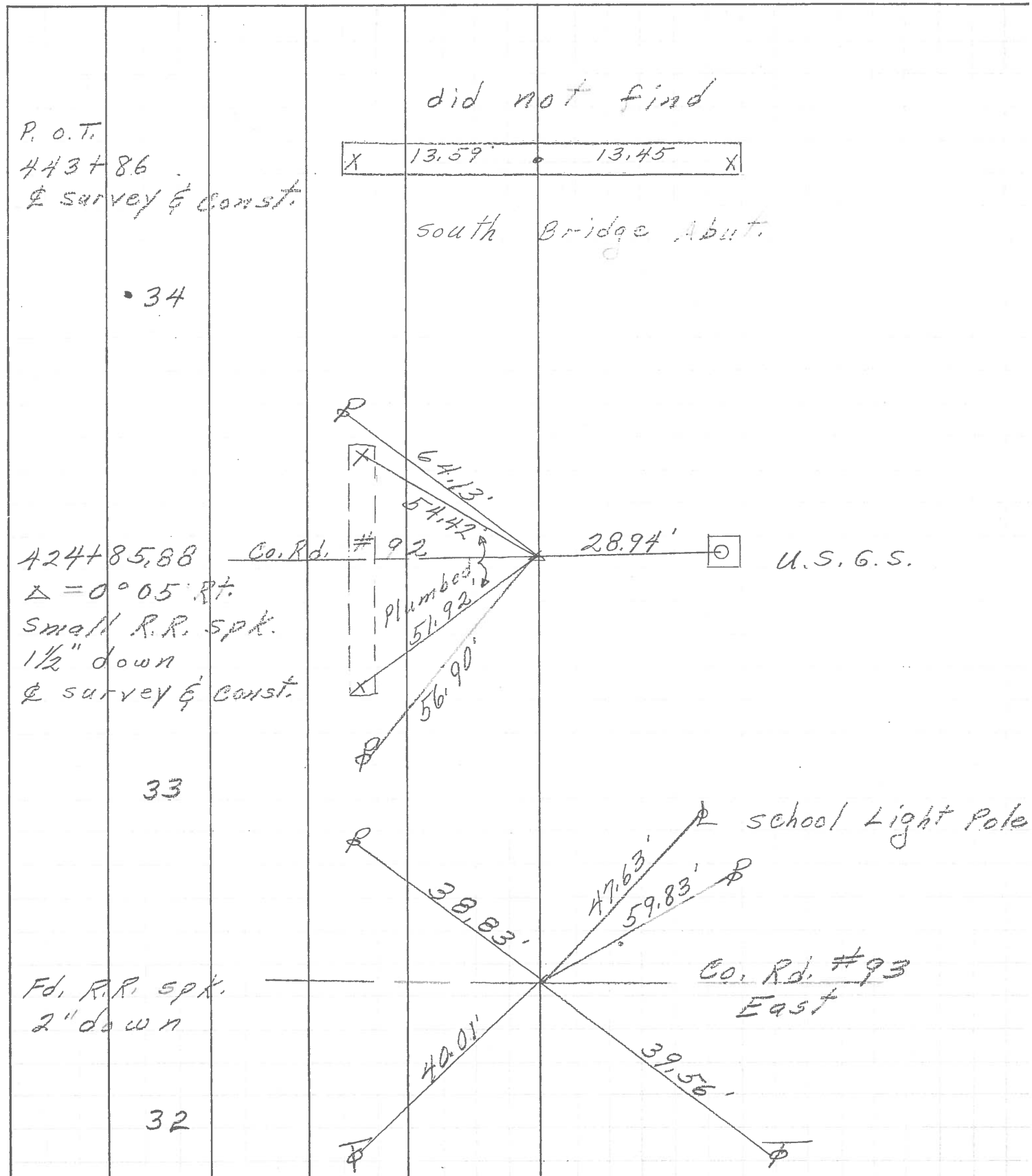
PERSONNEL	TITLE	PERSONNEL	TITLE
COUNTY <u>Ottawa</u> DATE <u>5-6-71</u>			
S. R. <u>19</u> WEATHER _____			
SEC. <u>17&16-8&9</u> TEMP. _____			
DESCRIPTION <u>Dook Harbor to S.R. # 2</u>			JOB NO. _____
	LEFT	CENTER LINE	RIGHT



PERSONNEL	TITLE	PERSONNEL	TITLE	COUNTY	<u>Ottawa</u>	DATE	<u>5-15-68</u>
<u>Schneider</u>		<u>Potts</u>		S. R.	<u>19</u>	WEATHER	<u>Partly Cloudy</u>
<u>Mosser</u>				SEC.	<u>Oak Harbor-North</u>	TEMP.	<u>70°</u>
<u>Barbour</u>				DESCRIPTION	<u>Ties for Control Points</u>		
<u>Redding</u>						JOB NO.	



PERSONNEL	TITLE	PERSONNEL	TITLE	COUNTY	DATE	WEATHER	TEMP.
				Ottawa	5-6-71		
				S. R. <u>19</u>			
				SEC. <u>17E16-8E9</u>			
DESCRIPTION	<u>Oak Harbor to S.R. # 2</u>			LEFT	CENTER LINE	RIGHT	JOB NO.



PERSONNEL TITLE PERSONNEL TITLE

Schneider _____ Potts _____
Mosser _____ _____
Barbour _____ _____
Redding _____ _____

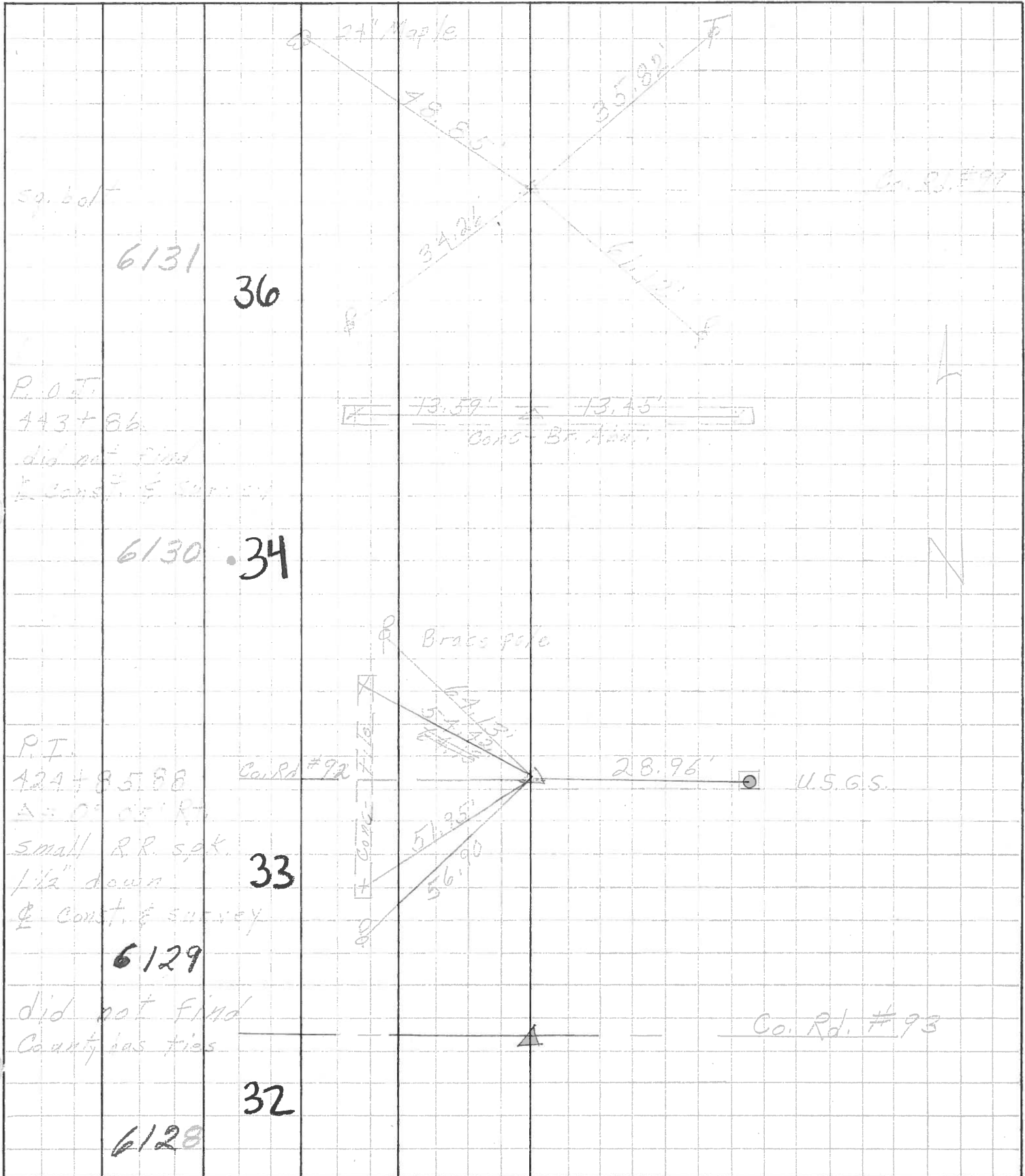
COUNTY Ottawa DATE 5-15-68

S. R. 19 WEATHER Partly Cloudy

SEC. Oak Harbor-North TEMP. 70°

DESCRIPTION Ties for Control Points JOB NO. _____

LEFT CENTER LINE RIGHT



PERSONNEL	TITLE	PERSONNEL	TITLE
Schneider			
Mosser			
Jeremy			
Snider			

COUNTY Ottawa DATE 5-1-62

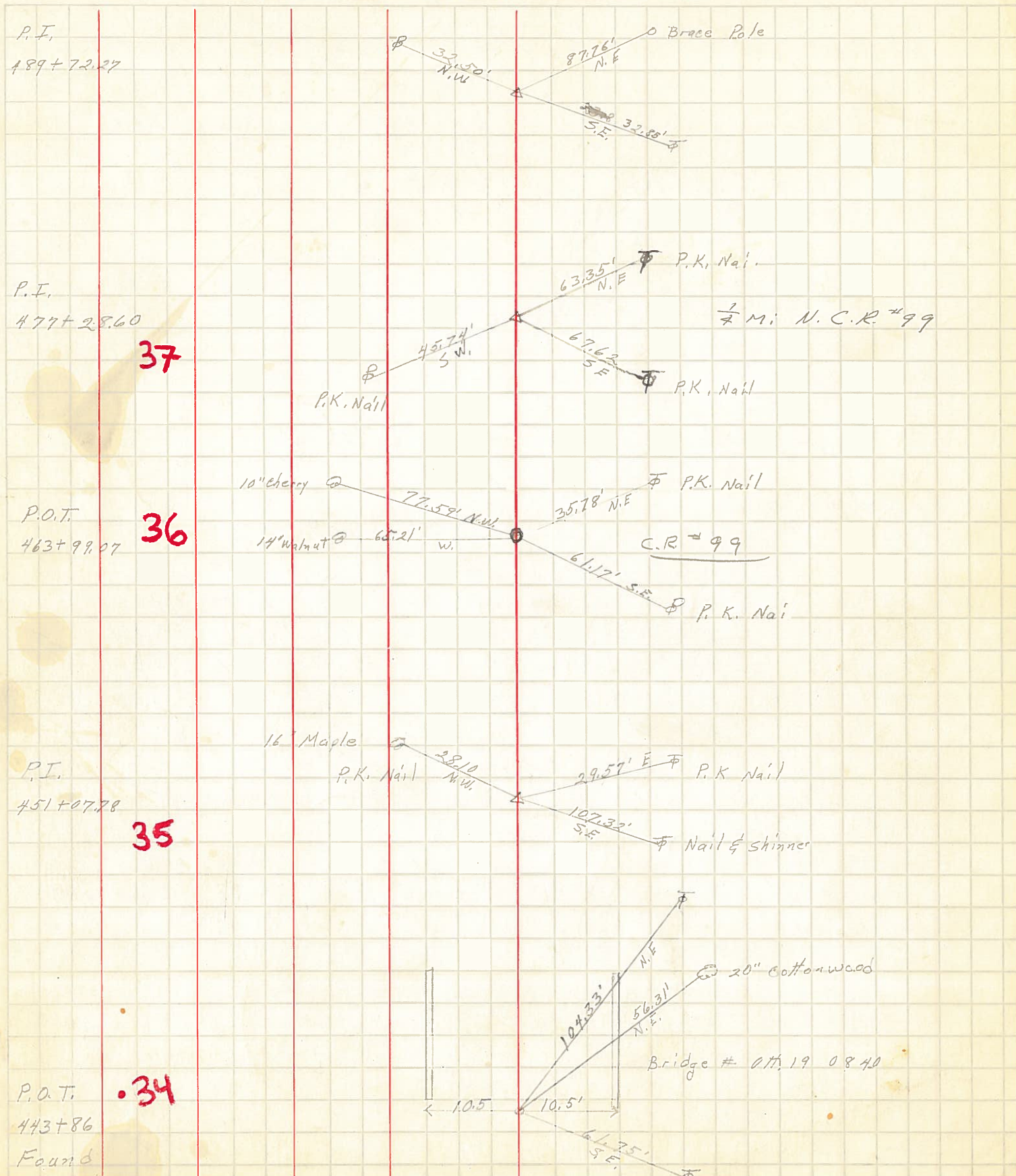
S. R. # 19 WEATHER Cloudy

8.40 ±

SEC. Toussaint River N. TEMP. 75°

DESCRIPTION Ties for Control

JOB NO. _____



37

36

35

34