

O.D.O.T. DISTRICT 2 SURVEY OFFICE (USE ONLY)

PERSONNEL _____ REFERENCE NO. 35 SHEET 24 OF 29
 NOTES AUBLE DATE 5/12/20 ROUTE SR 19
 H.C. LEU WEATHER SUNNY/WINDY COUNTY OTTAWA
 R.C. BALBAUGH TEMP. 48°F TOWNSHIP CARROLL
 DWG BY NIESE PID 107903 SECTION 8
 T 7 N R 15 E

TYPE MONUMENT MAG/WASHER

ON SURFACE - ~~BELOW~~ ON

OFFSET ☐ PAVEMENT 5.9' LT : ~~RT~~

4.0' TO LT EDGE PAVEMENT

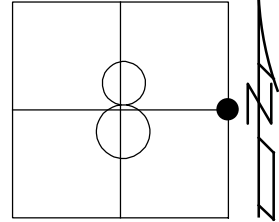
STATION: 451+16

HORIZ.DATUM: NAD83(2011)

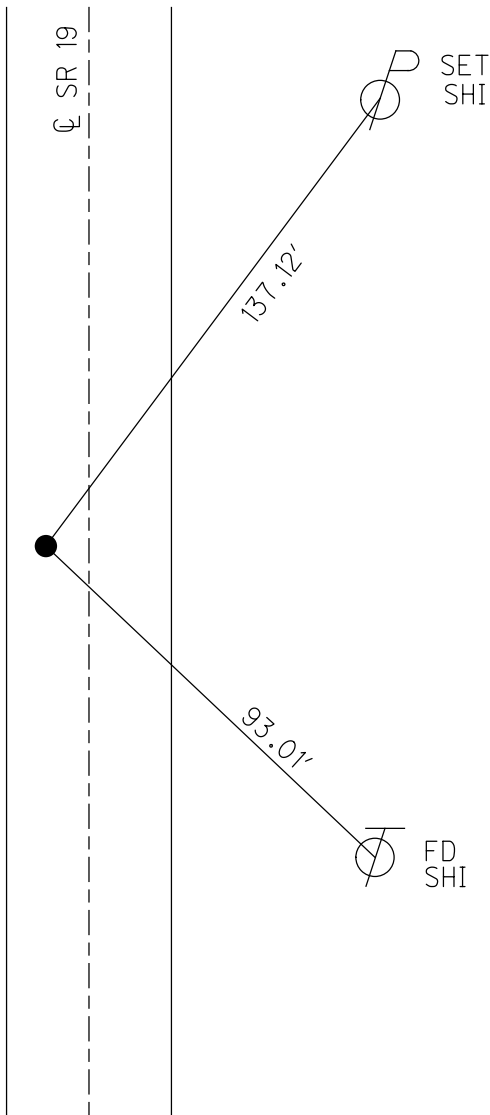
GEOID: NAVD88 2012A

GRID: NORTHING: 698254.429

EASTING: 1792052.828



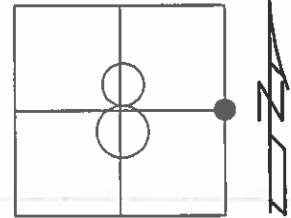
RECORD:
 BOAT SPK./WASHER
 SQ BOLT
 SET P.K./WASHER
 10/10/91
 FD P.K./WASHER
 8/14/08, MR
 SET MAG/WASHER
 10/27/09, SAH
 FD MAG/WASHER
 REF35
 5/12/20, JLL
 SET MAG/WASHER
 3-24-21, DSA



O.D.O.T. DISTRICT 2 SURVEY OFFICE (USE ONLY)

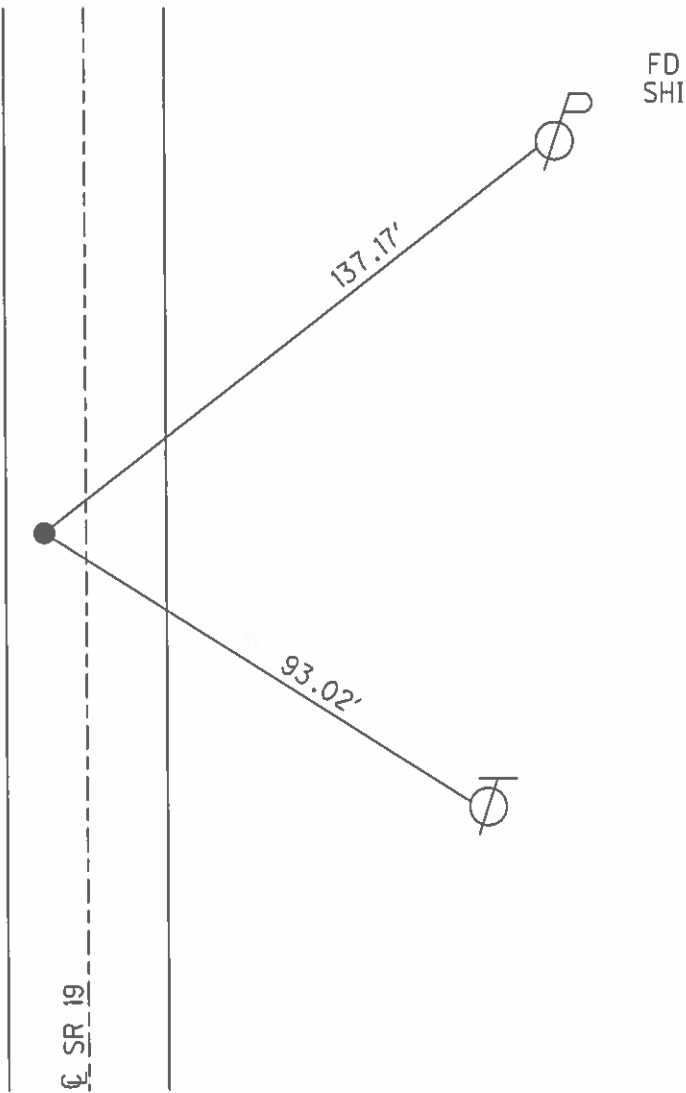
PERSONNEL _____ REFERENCE NO. 35 SHEET 24 OF 29
 NOTES HUSS DATE 08/14/08 ROUTE SR 19
 H.C. HUSS WEATHER PT. CLOUDY/FAIR COUNTY OTTAWA
 R.C. CANTERBURY TEMP. 78° TOWNSHIP CARROLL
 _____ SECTION 8
 _____ T 7 N R 15 E

TYPE MONUMENT P.K./WASHER
 ON SURFACE - ~~BELOW~~ ON _____
 LEFT - ☉ PAV'T - ~~RIGHT~~ 5.7'
4' TO W EDGE PAVEMENT
 S.L.M. 451+16



GRID: NORTHING: 698254.435 EASTING: 1792052.564

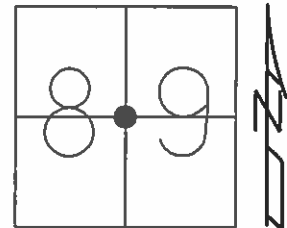
RECORD:
 PREVIOUS MONUMENTS:
 BOAT SPK./WASHER
 SQ BOLT
 RESET PK/WASHER
 GPS, SV35
 10/10/91
 NEEDS HUBS
 6/18/08, SAH
 SET MAG/W
 10/27/09, SAH



O.D.O.T. DISTRICT 2 SURVEY OFFICE (USE ONLY)

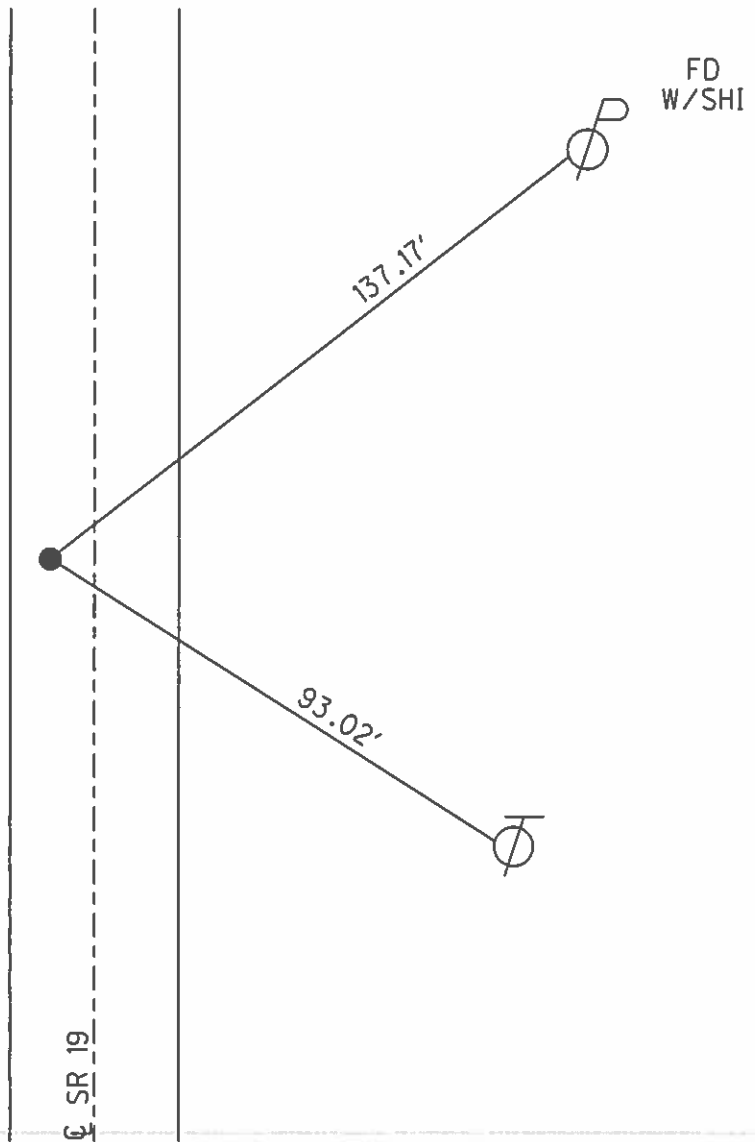
PERSONNEL _____ REFERENCE NO. 35 SHEET 28 OF 33
 NOTES HUSS DATE 08-14-08 ROUTE SR 19
 H.C. HUSS WEATHER PT. CLOUDY/FAIR COUNTY OTTAWA
 R.C. CANTERBURY TEMP. 78° TOWNSHIP CARROLL
 _____ SECTION 8,9
 _____ T 7 N R 15 E

TYPE MONUMENT PK/WASHER
 ON SURFACE - ~~BELOW~~ ON
 LEFT - ☉ PAV'T - ~~RIGHT~~ 5.7'
4' TO W. EDGE PAVEMENT
 S.L.M. 451+16



Grid: Northing: 698254.435 Easting: 1792052.564

- PREVIOUS MONUMENTS:
 BOAT SPK./WASHER
 SQ. BOLT
 RESET PK/WASHER
 GPS, SV35
 10-10-91
 NEEDS HUBS
 6-18-08
 SAH
 SET MAG/W
 10-27-09
 SAH



O.D.O.T. DISTRICT 2 SURVEY OFFICE

PERSONNEL _____

REFERENCE NO. 35

SHEET 7 OF 11

NOTES CHENEY

H.C. BARBOUR

R.C. RIPPLE

DATE 10-10-1991

WEATHER CLOUDY

TEMP. 60°

ROUTE 19

COUNTY OTTAWA

TOWNSHIP CAEROLL

SECTION 8 & 9

T7 N R 1 SE

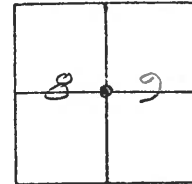
TYPE MONUMENT RE-SET PK/WASHER

ON SURFACE - ~~BELOW~~ _____

LEFT- & PAV'T. - ~~RIGHT~~ 6'

4' TO W. EDGE PAVEMENT

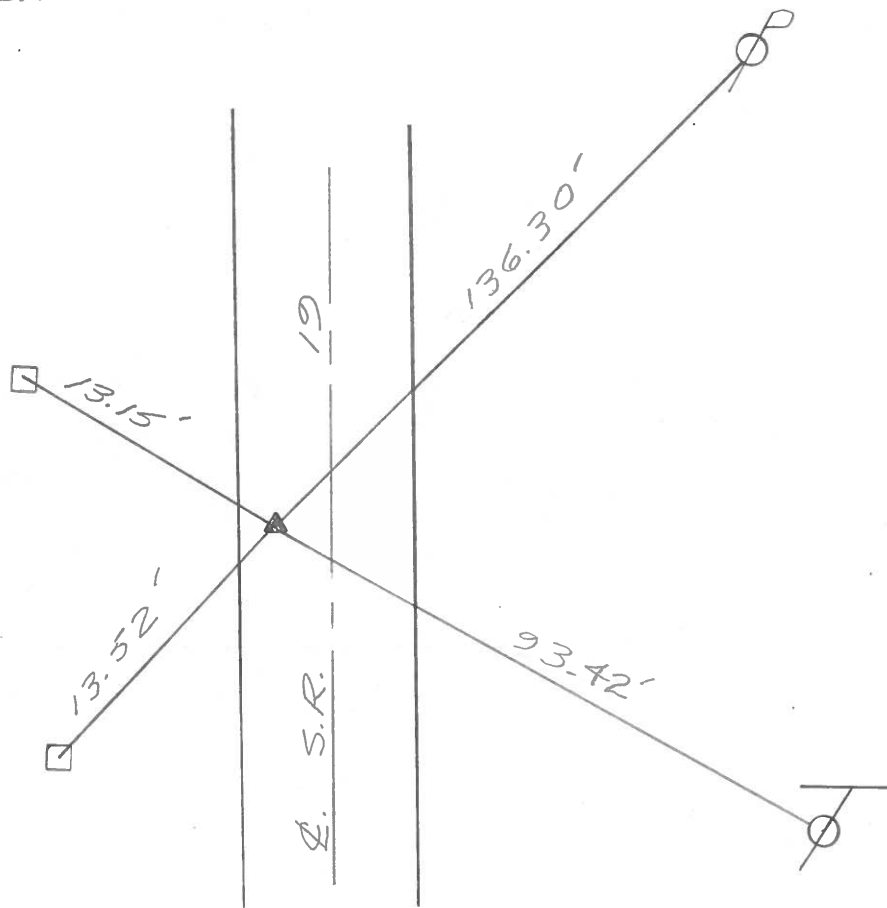
S.L.M. 451+16 (Record Sta.)



PREVIOUS MONUMENTS:

BOAT SPK/WASHER

SQ. BOLT



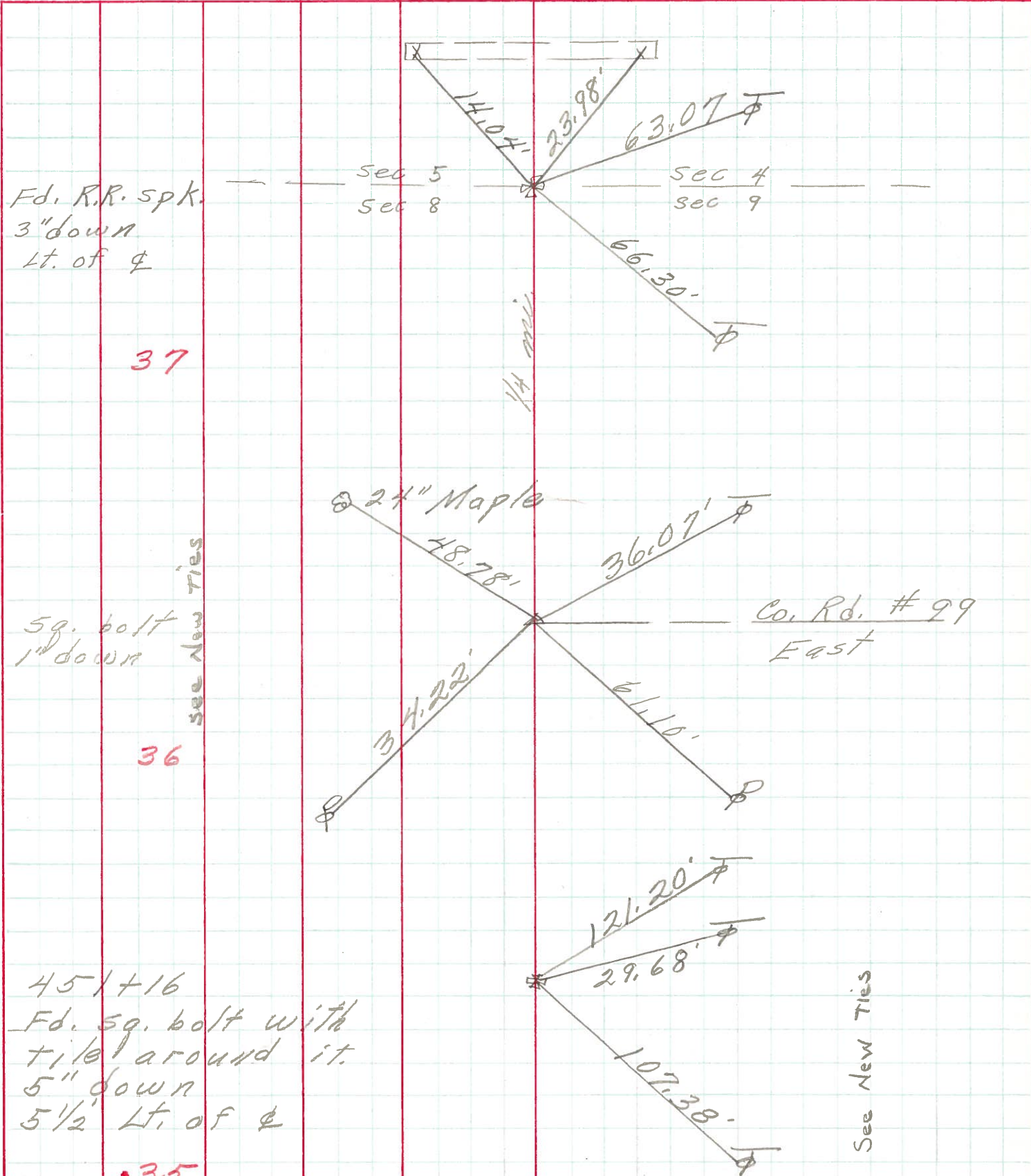
PERSONNEL TITLE PERSONNEL TITLE

COUNTY Ottawa DATE 5-7-71

S. R. 19 WEATHER

SEC. 384-869 TEMP.

DESCRIPTION Oak Harbor to S.R. #2 JOB NO.



Fd. R.R. spk.
3" down
Lt. of ϕ

37

sq. bolt
1" down
see New Ties

36

45x16
Fd. sq. bolt with
tile around it.
5" down
5 1/2 Lt. of ϕ

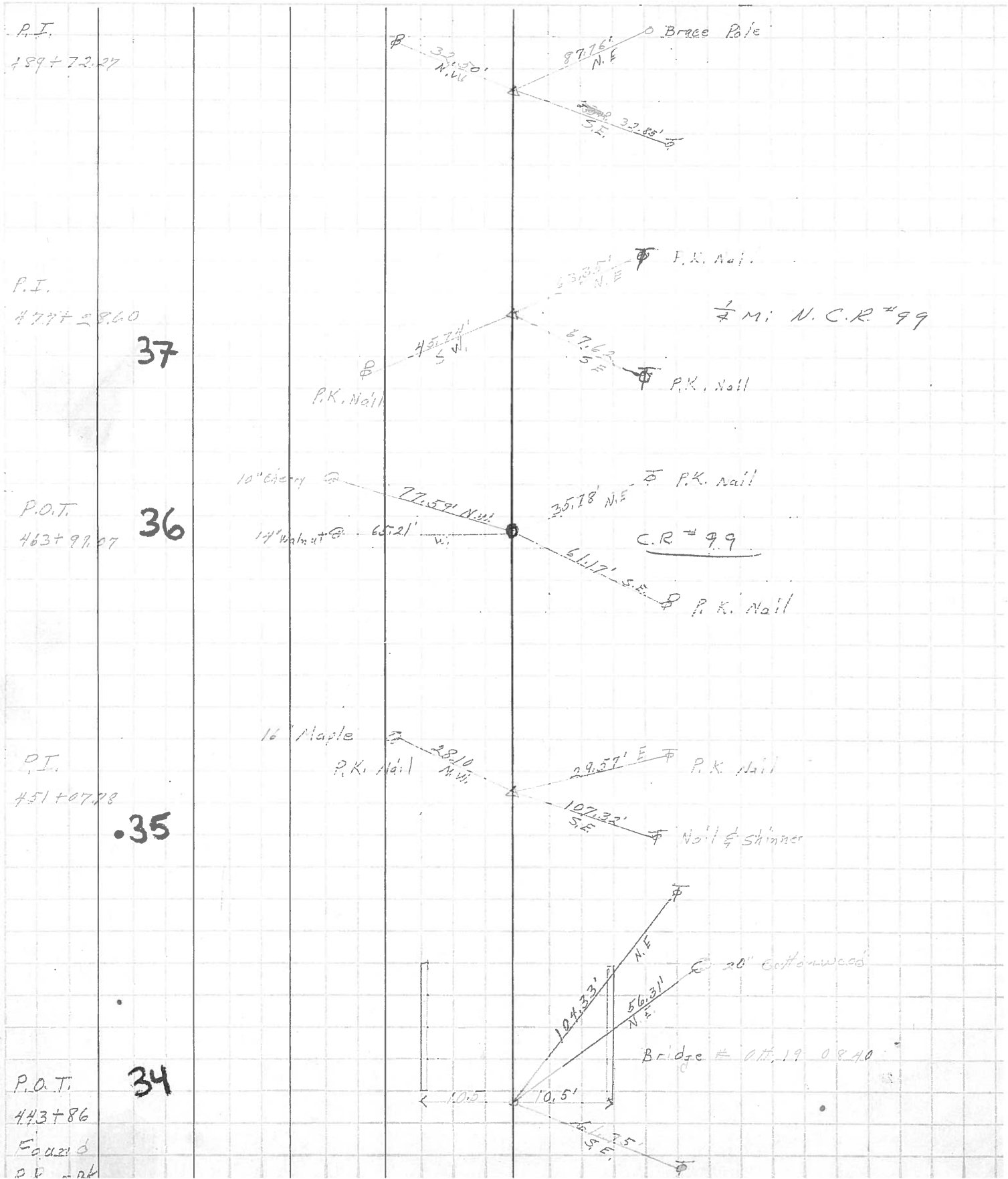
35

See New Ties

PERSONNEL	TITLE	PERSONNEL	TITLE
Schneider			
Mosser			
Jeremy			
Snider			

COUNTY O. Hawaii DATE 5-1-62
 S. R. # 19 WEATHER Cloudy
8.40 ±
 SEC. Toussaint River N. TEMP. 75°

DESCRIPTION Ties for Control JOB NO. _____



P.I.
489+72.27

P.I.
477+58.60

P.O.T.
463+99.27

P.I.
451+07.78

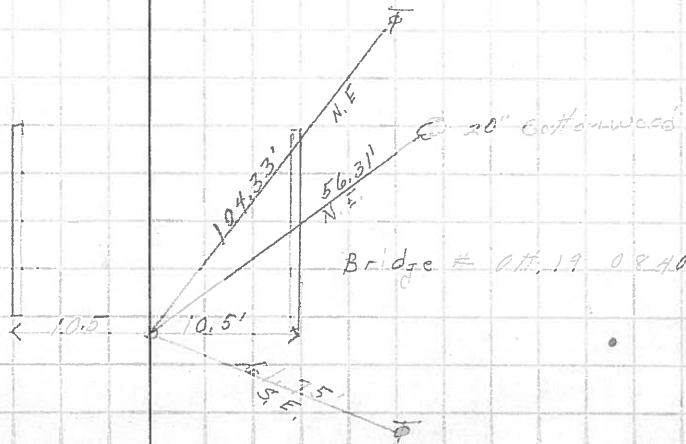
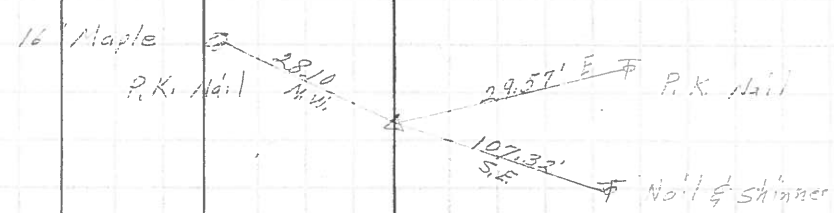
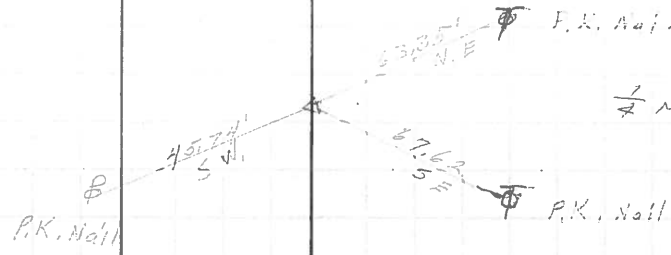
P.O.T.
443+86
Fouzi
D.D. - nk

37

36

.35

34



Bridge # 011.19 0840