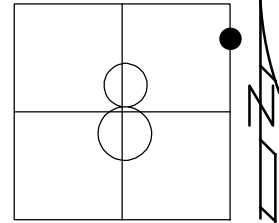


O.D.O.T. DISTRICT 2 SURVEY OFFICE (USE ONLY)

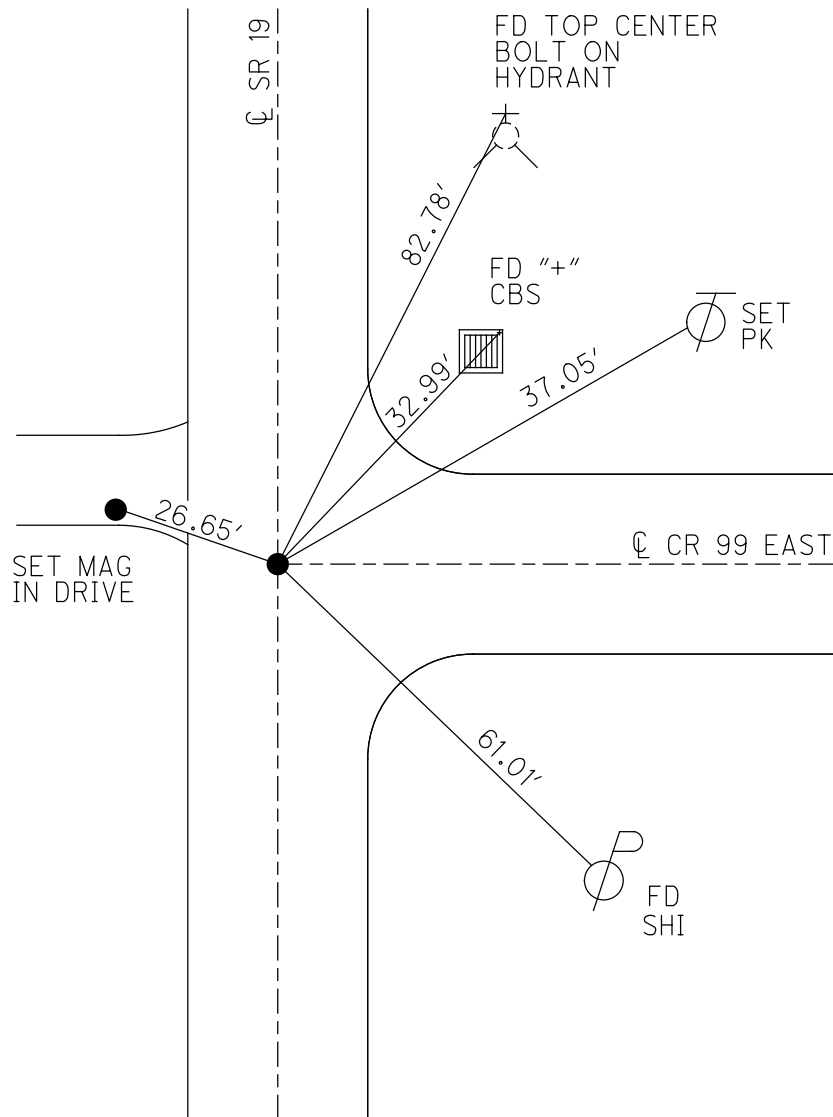
PERSONNEL _____ REFERENCE NO. 36 SHEET 25 OF 29
 NOTES AUBLE DATE 5/20/20 ROUTE SR 19
 H.C. LEU WEATHER CLOUDY/FAIR COUNTY OTTAWA
 R.C. AUBLE TEMP. 55°F TOWNSHIP CARROLL
 DWG BY NIESE PID 107903 SECTION 8
 T 7 N R 15 E

TYPE MONUMENT MAG/WASHER
 ON SURFACE - ~~BELOW~~ ON
 OFFSET \varnothing PAVEMENT ON LT : RT
11.6' TO LT EDGE PAVEMENT
 STATION: 464+43



HORZ. DATUM: NAD83(2011) GEOID: NAVD88 2012A
 GRID: NORTHING: 699545.600 EASTING: 1792058.269

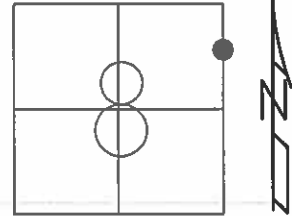
RECORD:
 SM.R.R.SPIKE
 SQ BOLT
 FD P.K./WASHER
 SV36
 6/18/08, SAH
 SET MAG/WASHER
 10/22/09, SAH
 FD MAG/WASHER
 5/20/20, JLL
 SET MAG/WASHER
 3-24-21, DSA



O.D.O.T. DISTRICT 2 SURVEY OFFICE (USE ONLY)

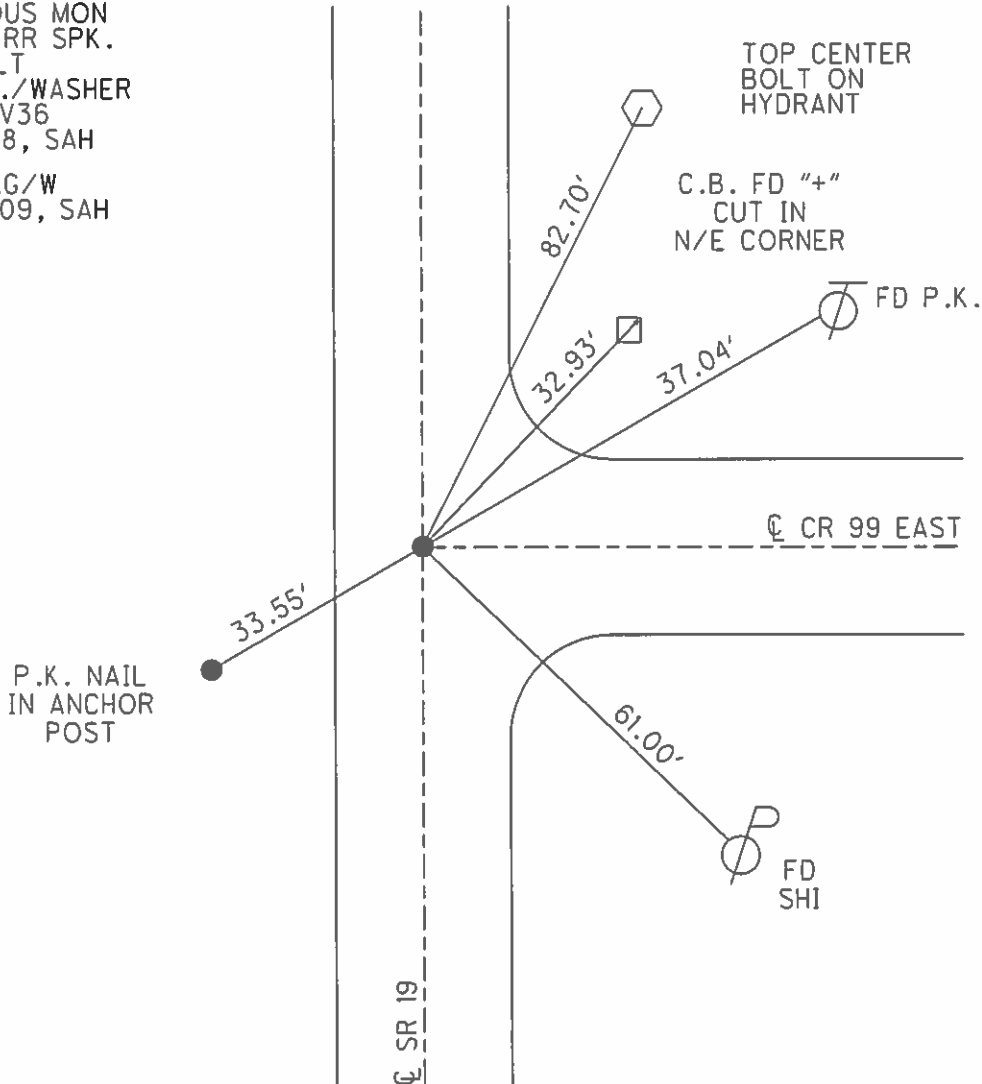
PERSONNEL	REFERENCE NO.	<u>36</u>	SHEET	<u>25</u>	OF	<u>29</u>
NOTES	<u>HUSS</u>	DATE	<u>6/18/08</u>	ROUTE	<u>SR 19</u>	
H.C.	<u>MOSER</u>	WEATHER	<u>CLOUDY/FAIR</u>	COUNTY	<u>OTTAWA</u>	
R.C.	<u>CANTERBURY</u>	TEMP.	<u>60°</u>	TOWNSHIP	<u>CARROLL</u>	
				SECTION	<u>8</u>	
				T	<u>7</u>	R
					<u>15</u>	E

TYPE MONUMENT RESET P.K./WASHER
 ON SURFACE - ~~BELOW~~ ON
~~LEFT~~ - Q PAV'T - RIGHT 0.8'
10.3 TO W EDGE PAVEMENT
 S.L.M. 464+43



GRID: NORTHING: 699545.654 EASTING: 1792058.224

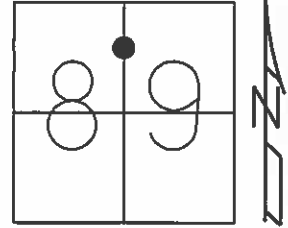
RECORD:
 PREVIOUS MON
 SMALL RR SPK.
 SO BOLT
 FD P.K./WASHER
 GPS, SV36
 6/18/08, SAH
 SET MAG/W
 10/22/09, SAH



O.D.O.T. DISTRICT 2 SURVEY OFFICE (USE ONLY)

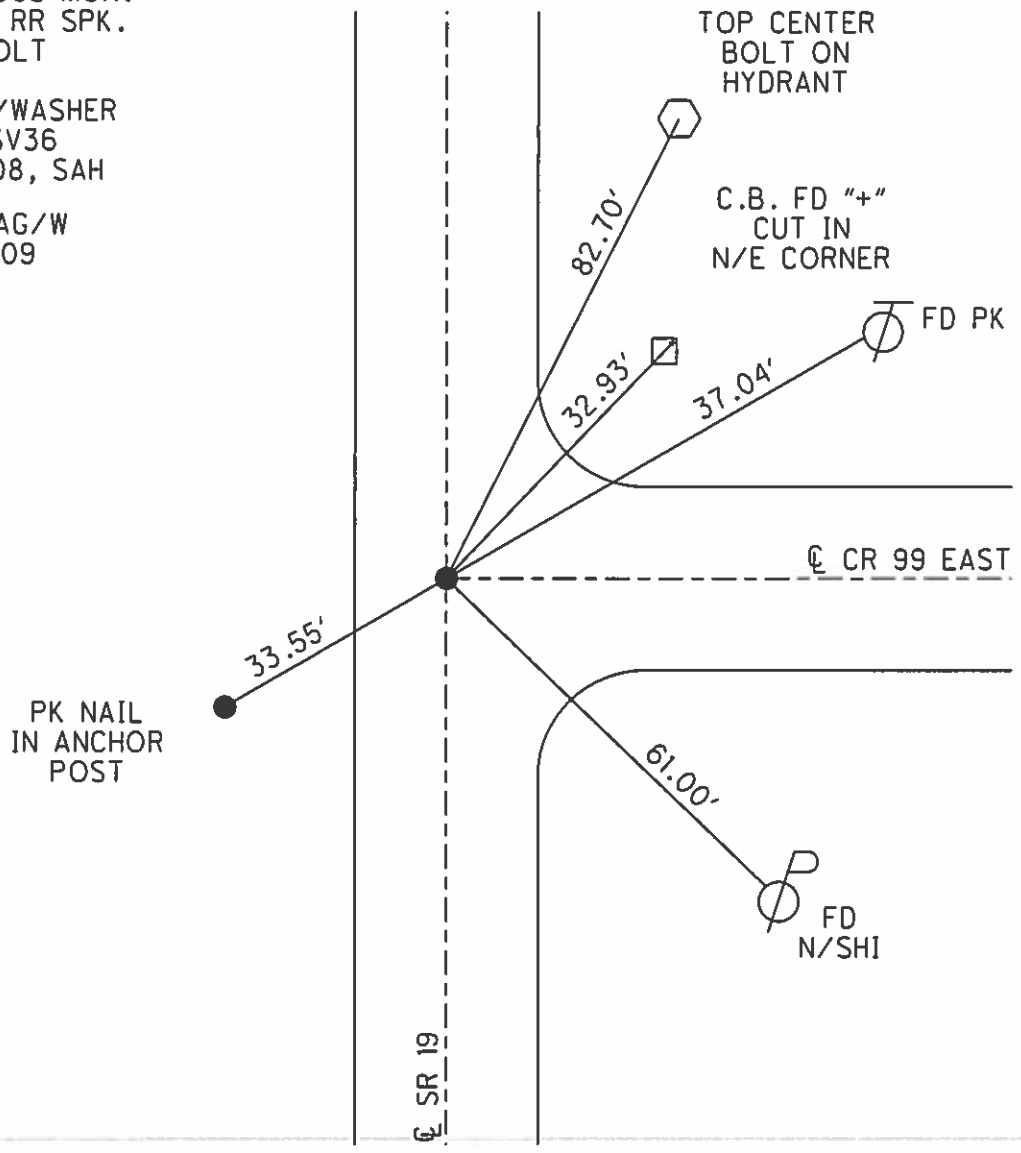
PERSONNEL _____ REFERENCE NO. 36 SHEET 29 OF 33
 NOTES HUSS DATE 6-18-08 ROUTE SR 19
 H.C. MOSER WEATHER CLOUDY/FAIR COUNTY OTTAWA
 R.C. CANTERBURY TEMP. 60° TOWNSHIP CARROLL
 _____ SECTION 8,9
 _____ T 7 N R 15 E

TYPE MONUMENT RESET PK NAIL/WASHER
 ON SURFACE - ~~BELOW~~ ON _____
~~LEFT~~ - \odot PAV'T - RIGHT 0.8'
10.3 TO W. EDGE PAVEMENT
 S.L.M. 464+43



Grid: Northing: 699545.654 Easting: 1792058.224

PREVIOUS MON.
 SMALL RR SPK.
 SQ. BOLT
 FD PK/WASHER
 GPS, SV36
 6/18/08, SAH
 SET MAG/W
 10-22-09
 SAH



O.D.O.T. DISTRICT 2 SURVEY OFFICE

PERSONNEL _____

REFERENCE NO. 36

SHEET 8 OF 11

NOTES Cheney

H.C. BARBOUR

R.C. RIPPLE

DATE 10/10/91

WEATHER SUNNY

TEMP. 60°

ROUTE SR#19

COUNTY OTTAWA

TOWNSHIP CARROLL

SECTION _____

T 7 N R 15 E

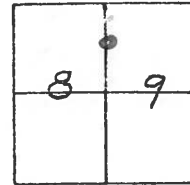
TYPE MONUMENT Reset P.K. Nail Washer

ON SURFACE - ~~BELOW~~ _____

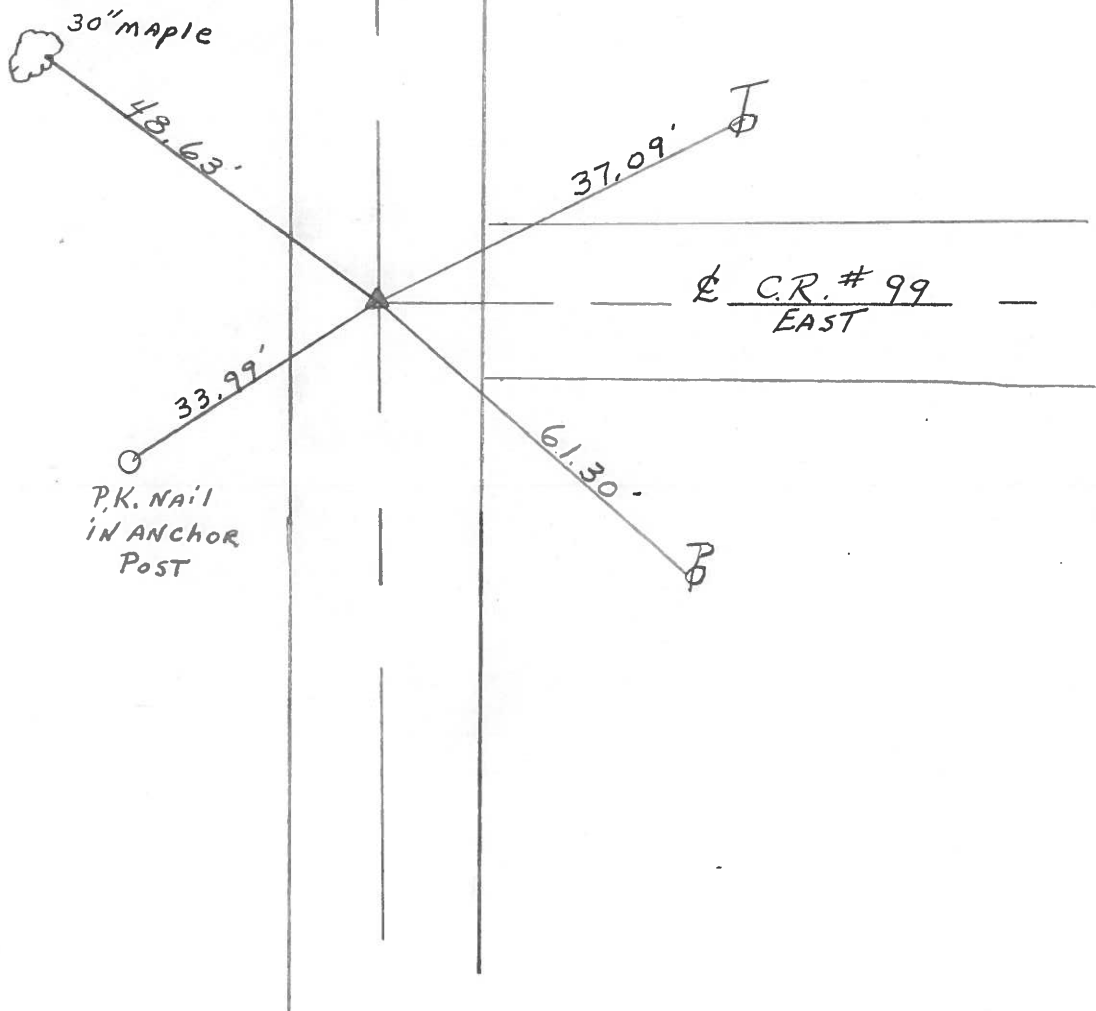
~~LEFT~~ - ¢ PAV'T. - RIGHT 1'

10.3 TO W EDGE PAVEMENT

S.L.M. 464+43



Previous Mon.
Small R.R. Spk.
Sq. Bolt



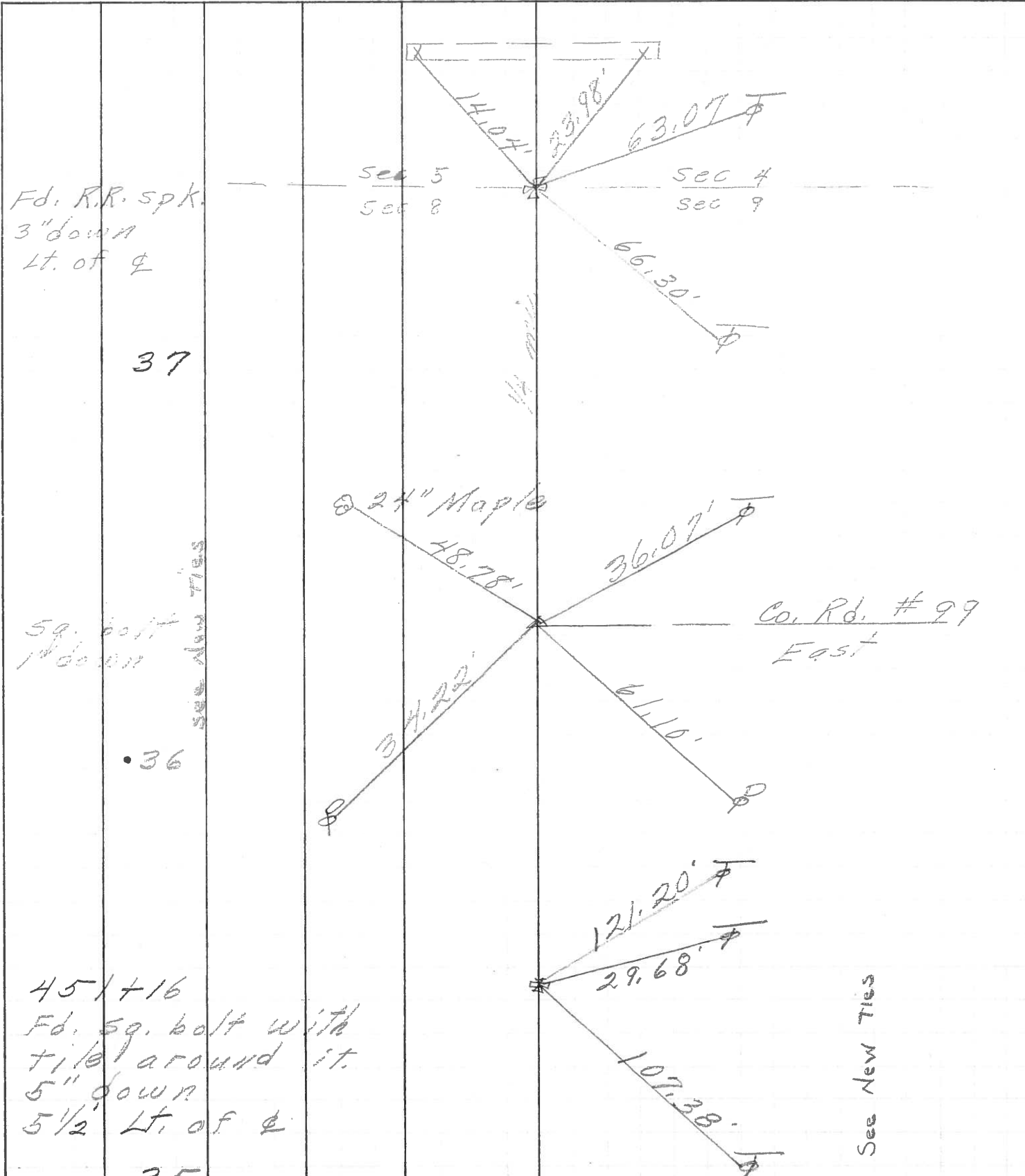
PERSONNEL TITLE PERSONNEL TITLE

COUNTY Ottawa DATE 5-7-71

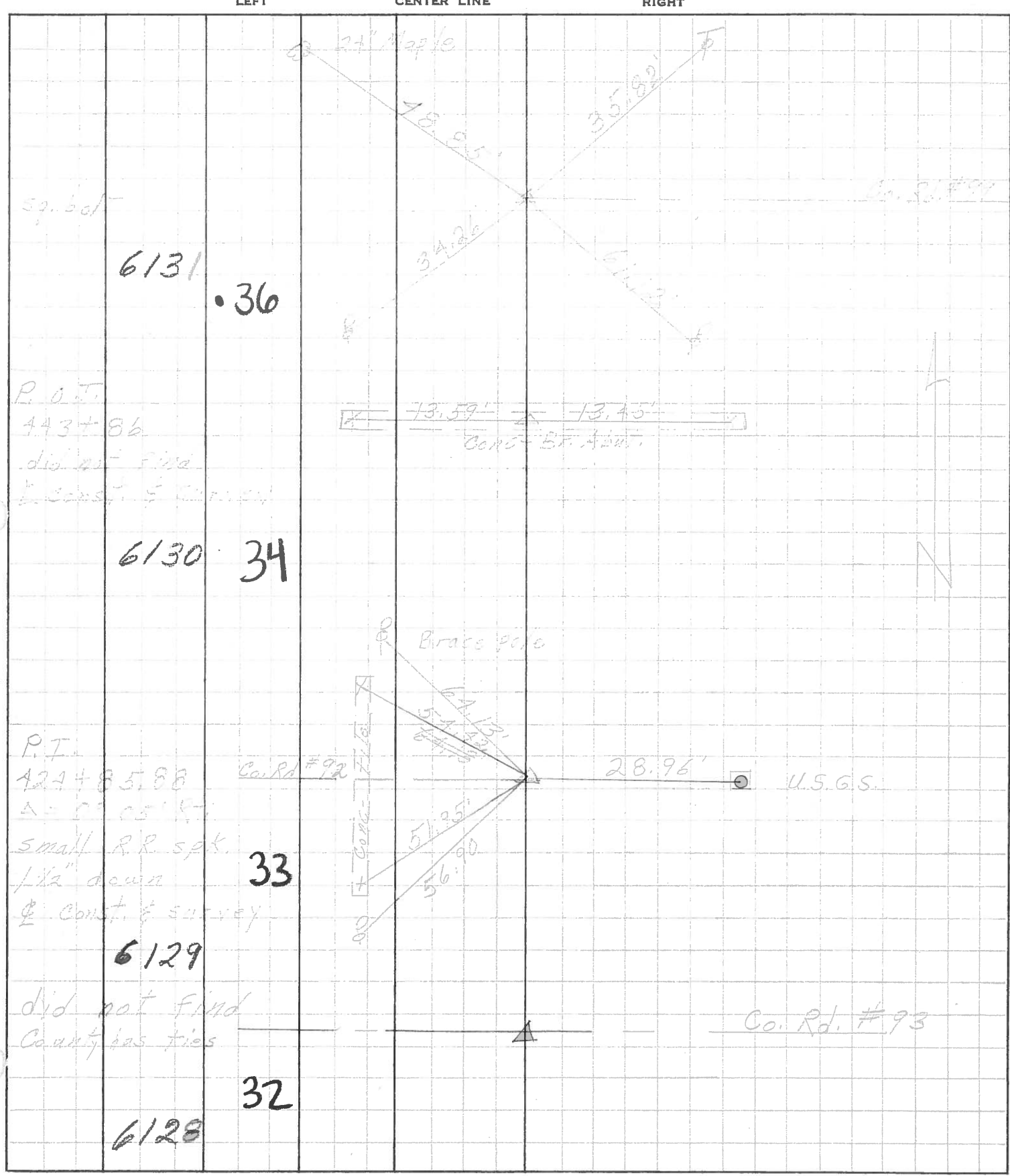
S. R. 19 WEATHER

SEC. 354-859 TEMP.

DESCRIPTION Oak Harbor to S.R. #2 JOB NO.



PERSONNEL TITLE PERSONNEL TITLE COUNTY Ottawa DATE 5-15-68
Schneider Potts
Mosser S. R. 19 WEATHER Partly Cloudy
Barbour
Redding SEC. Oak Harbor-North TEMP. 70°
 DESCRIPTION Ties for Control Points JOB NO.

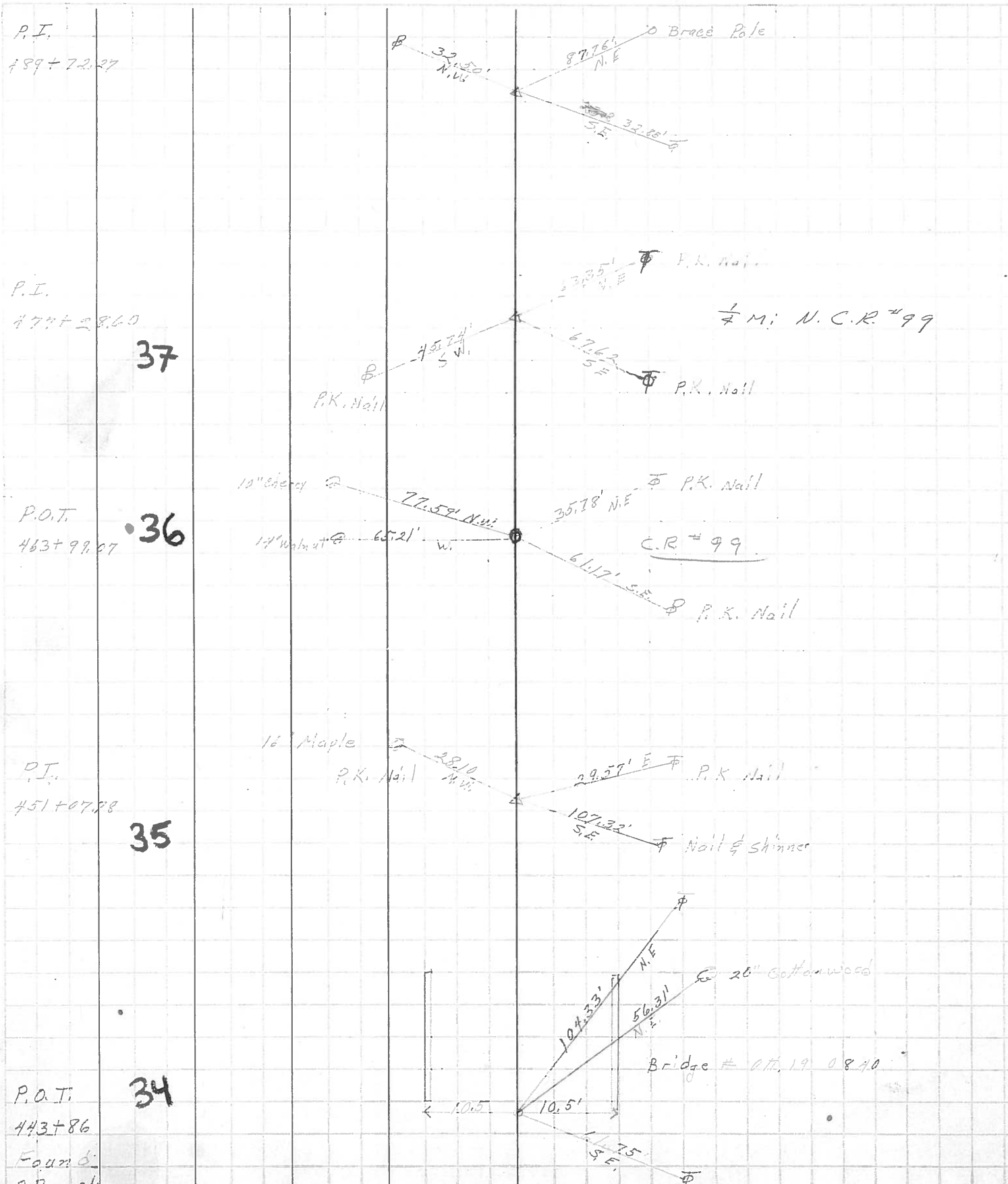


PERSONNEL	TITLE	PERSONNEL	TITLE
Schneider			
Mosser			
Jeremy			
Snider			

COUNTY Ottawa DATE 5-1-62
 S. R. # 19 WEATHER Cloudy
8.40 ±
 SEC. Toussaint River N. TEMP. 75°

DESCRIPTION Ties for Control

JOB NO. _____



P.I.
489+72.27

P.I.
474+28.60
37

P.O.T.
463+99.87
36

P.I.
451+07.78
35

P.O.T.
443+86
Found:
34

