

O.D.O.T. DISTRICT 2 SURVEY OFFICE (USE ONLY)

PERSONNEL

REFERENCE NO. 38

SHEET 27 OF 29

NOTES AUBLE

DATE 5/20/20

ROUTE SR 19

H.C. LEU

WEATHER CLOUDY/FAIR

COUNTY OTTAWA

R.C. AUBLE

TEMP. 55°F

TOWNSHIP CARROLL

SECTION 5

DWG BY NIESE

PID 107903

T 7 N R 15 E

TYPE MONUMENT MAG NAIL

ON SURFACE - ~~BELOW~~ ON

OFFSET Q PAVEMENT 12.4' LT : ~~RT~~

2.8' TO LT EDGE PAVEMENT

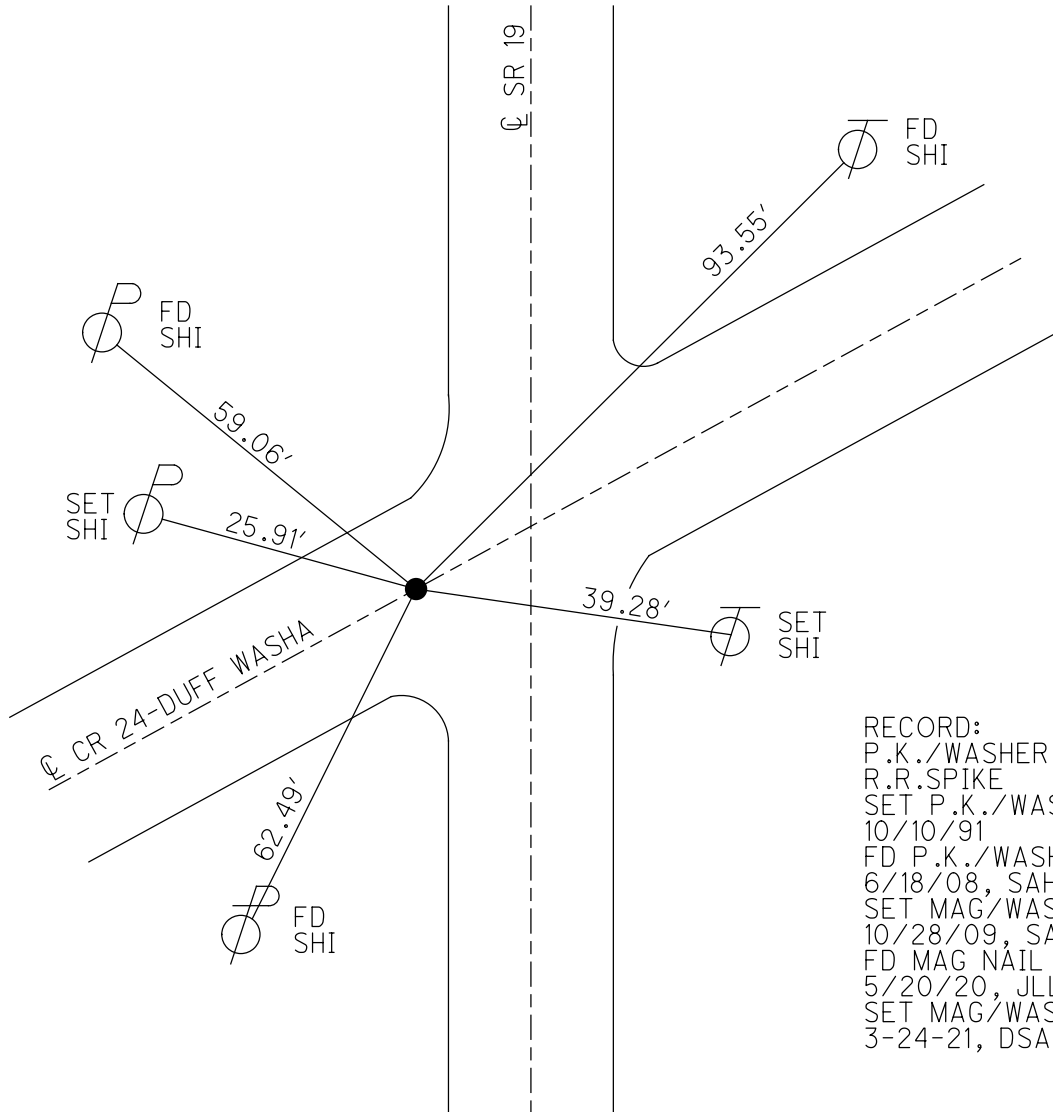
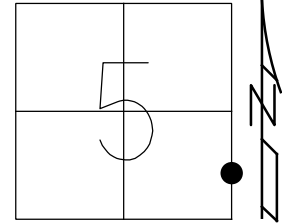
STATION: 489+76

HORIZ.DATUM: NAD83(2011)

GEOID: NAVD88 2012A

GRID: NORTHING: 702113.528

EASTING: 1792055.114

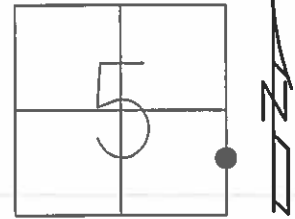


RECORD:
 P.K./WASHER
 R.R.SPIKE
 SET P.K./WASHER
 10/10/91
 FD P.K./WASHER
 6/18/08, SAH
 SET MAG/WASHER
 10/28/09, SAH
 FD MAG NAIL
 5/20/20, JLL
 SET MAG/WASHER
 3-24-21, DSA

O.D.O.T. DISTRICT 2 SURVEY OFFICE (USE ONLY)

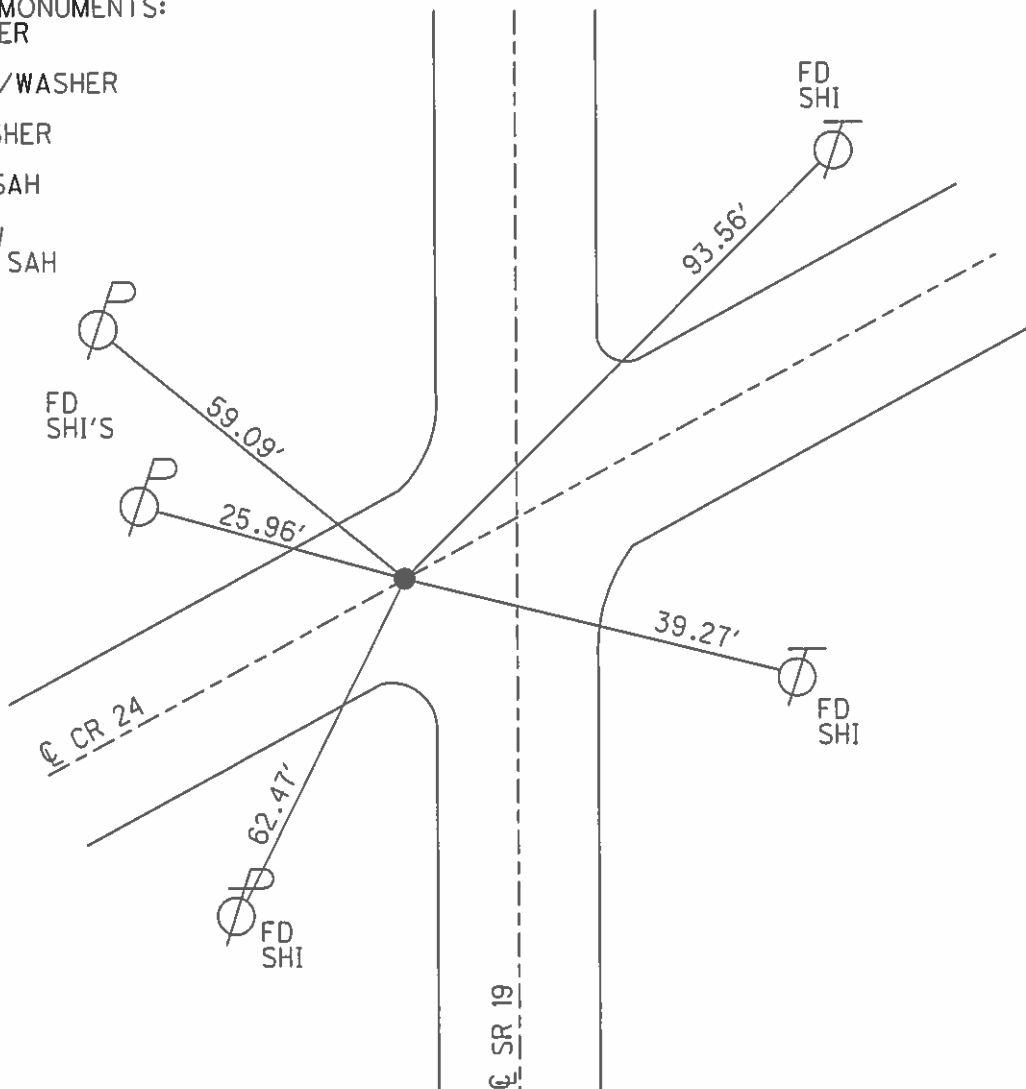
PERSONNEL _____ REFERENCE NO. 38 SHEET 27 OF 29
 NOTES HUSS DATE 6/18/08 ROUTE SR 19
 H.C. MOSER WEATHER CLOUDY/FAIR COUNTY OTTAWA
 R.C. CANTERBURY TEMP. 60° TOWNSHIP CARROLL
 SECTION 5
 T 7 N R 15 E

TYPE MONUMENT PK/WASHER
 ON SURFACE - ~~BELOW~~ ON _____
 LEFT - ☉ PAV'T - ~~RIGHT~~ 12.6'
2.8' TO W EDGE PAVEMENT
 S.L.M. 489+76



GRID: NORTHING: 702113.456 EASTING: 1792055.094

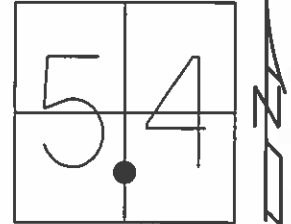
RECORD:
 PREVIOUS MONUMENTS:
 P.K./WASHER
 RR SPK.
 RE-SET PK/WASHER
 10/10/91
 FD PK/WASHER
 GPS, SV38
 6/18/08, SAH
 SET MAG/W
 10/28/09, SAH



O.D.O.T. DISTRICT 2 SURVEY OFFICE (USE ONLY)

PERSONNEL _____ REFERENCE NO. 38 SHEET 31 OF 33
 NOTES HUSS DATE 6-18-08 ROUTE SR 19
 H.C. MOSER WEATHER CLOUDY/FAIR COUNTY OTTAWA
 R.C. CANTERBURY TEMP. 60° TOWNSHIP CARROLL
 _____ SECTION 4-5
 _____ T 7 N R 15 E

TYPE MONUMENT PK/WASHER
 ON SURFACE - ~~BELOW~~ ON _____
 LEFT - ☉ PAV'T - ~~RIGHT~~ 12.6'
2.8' TO W. EDGE PAVEMENT
 S.L.M. 489+76



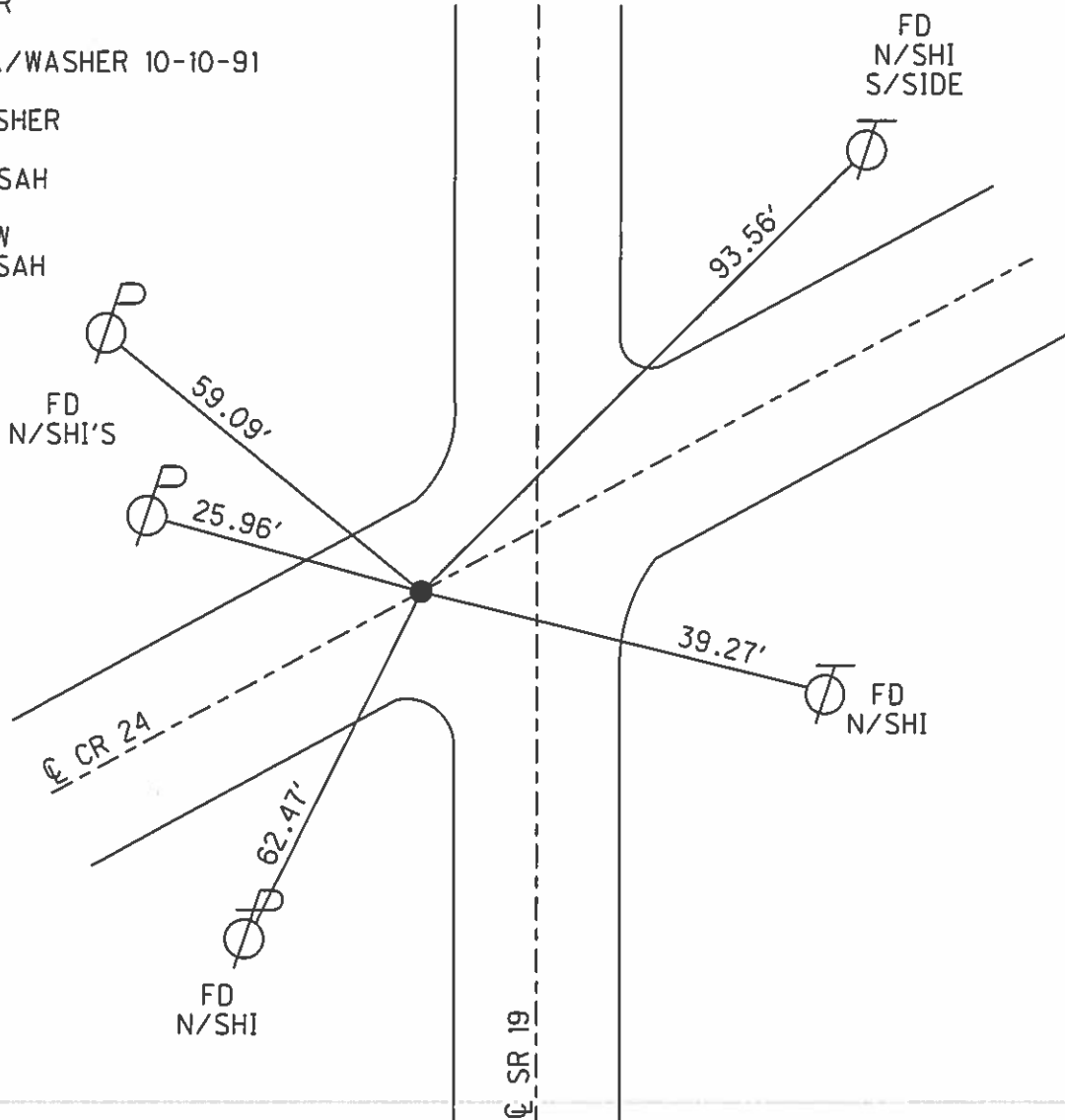
Grid: Northing: 702113.456 Easting: 1792055.094

PREVIOUS MONUMENTS:

PK/WASHER
 RR SPK.
 RE-SET PK/WASHER 10-10-91

FD PK/WASHER
 GPS, SV38
 6/18/08, SAH

SET MAG/W
 10-28-09 SAH



O.D.O.T. DISTRICT 2 SURVEY OFFICE

PERSONNEL _____

REFERENCE NO. 38

SHEET 10 OF 11

NOTES CHENEY

H.C. BARBOUR

R.C. RIPPLE

DATE 10-10-1991

WEATHER CLOUDY

TEMP. 60°

ROUTE 19

COUNTY OTTAWA

TOWNSHIP CARROLL

SECTION 4-5

T7 N R1 SE

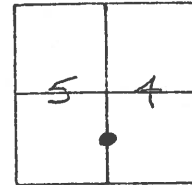
TYPE MONUMENT RE-SET PK/WASHER

ON SURFACE - ~~BELOW~~ _____

LEFT-C PAV'T. - ~~RIGHT~~ 13'

3.5' TO W EDGE PAVEMENT

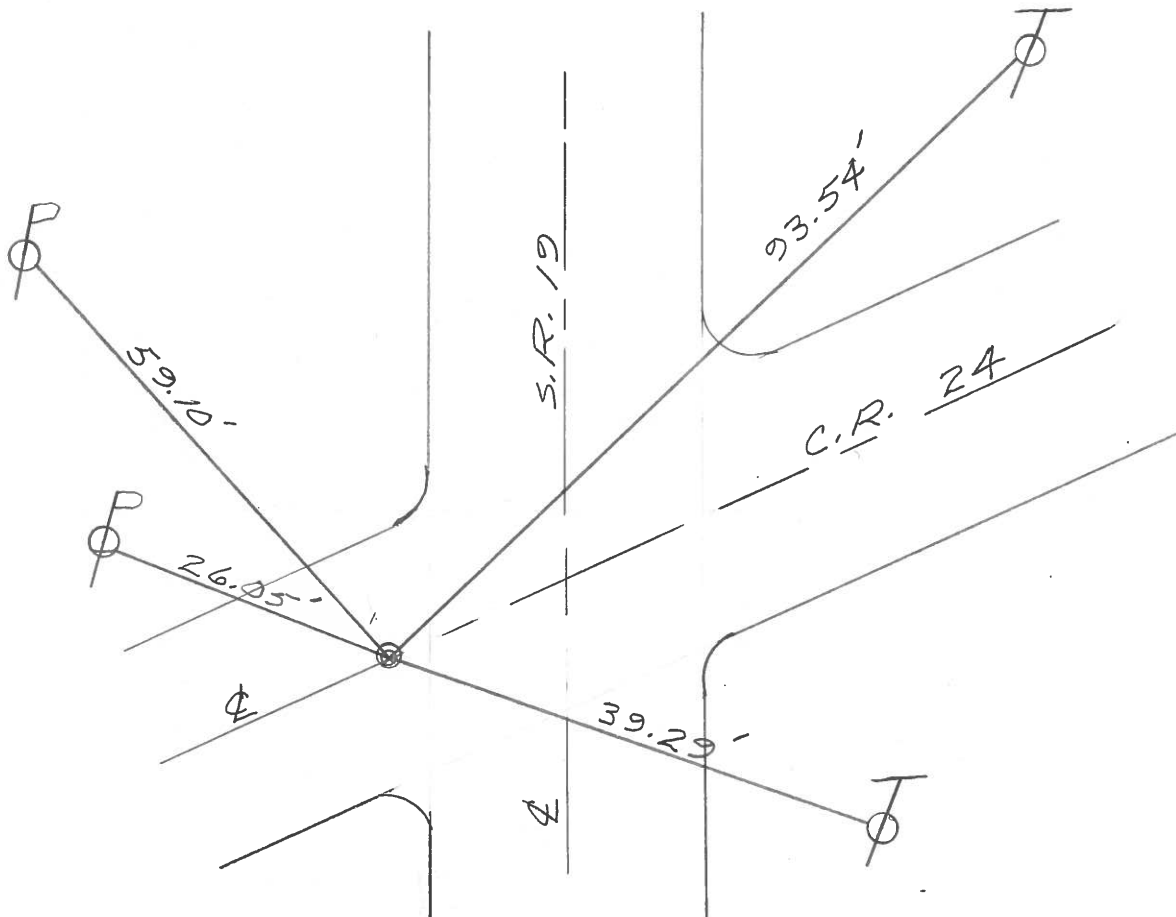
S.L.M. 489+76



PREVIOUS MONUMENTS:

PK/WASHER

RR. SPK.



PERSONNEL TITLE PERSONNEL TITLE

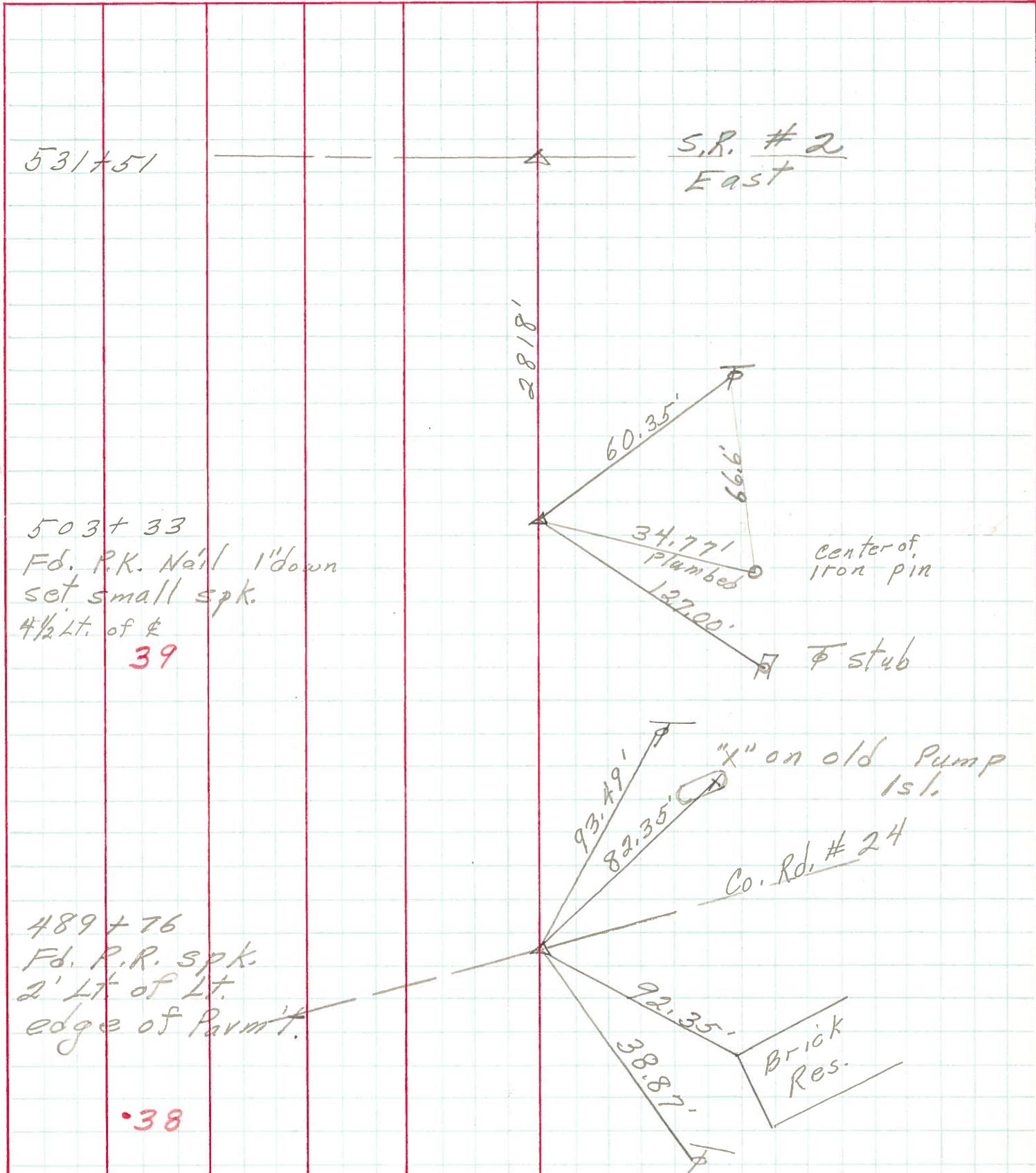
COUNTY Ottawa DATE 5-7-71

S. R. 19 WEATHER

SEC. 354 TEMP.

DESCRIPTION Oak Harbour to S.R. #2 JOB NO.

LEFT CENTER LINE RIGHT



PERSONNEL	TITLE	PERSONNEL	TITLE	COUNTY	DATE	S. R.	WEATHER	SEC.	TEMP.	DESCRIPTION	JOB NO.
Schneider		Potts		Ottawa	5-15-68	19	Fair	Oak Harbor-North	70°	Ties for Control Points	

