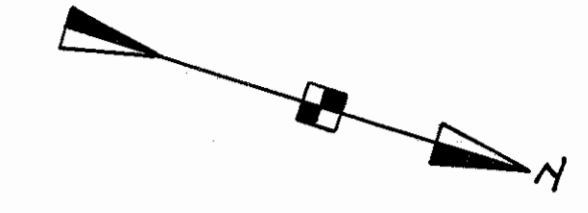
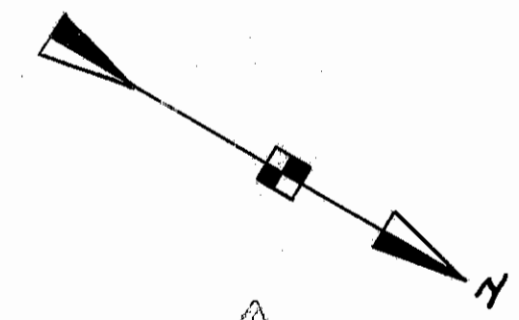
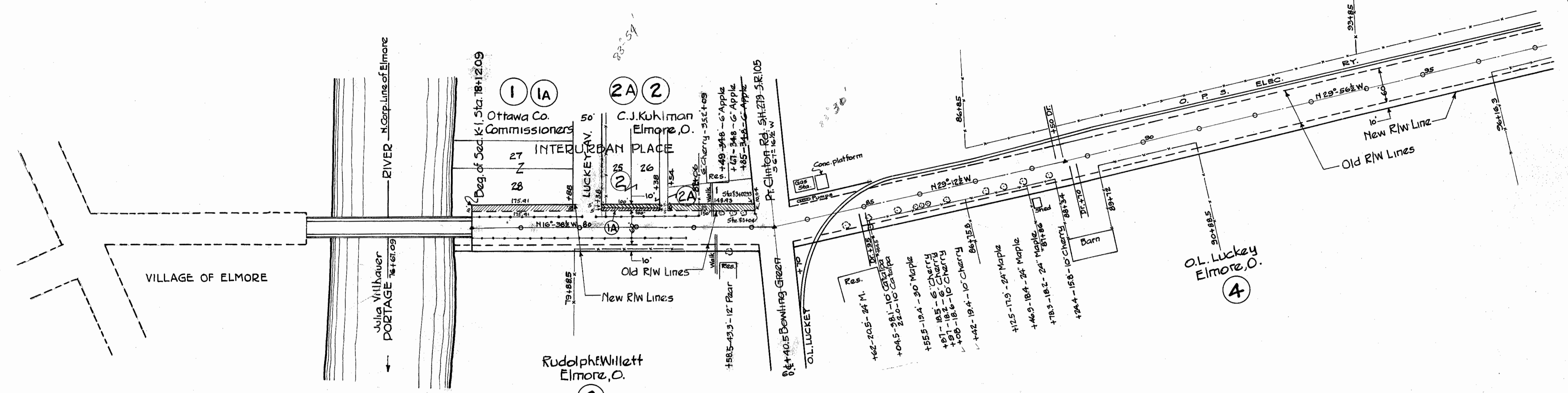


R/WOK as shown
F.J.F.
3/8/44



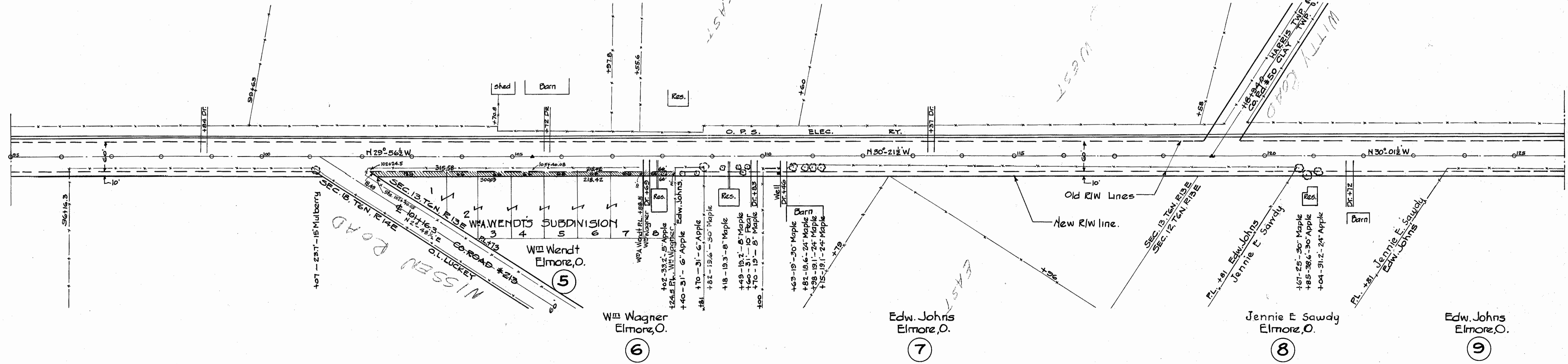
PI = 83+40.5
Δ = 12°-34 L

PI = 88+59.25
Δ = 0°-44 L



PI = 105+40.08
Δ = 0°-25 L

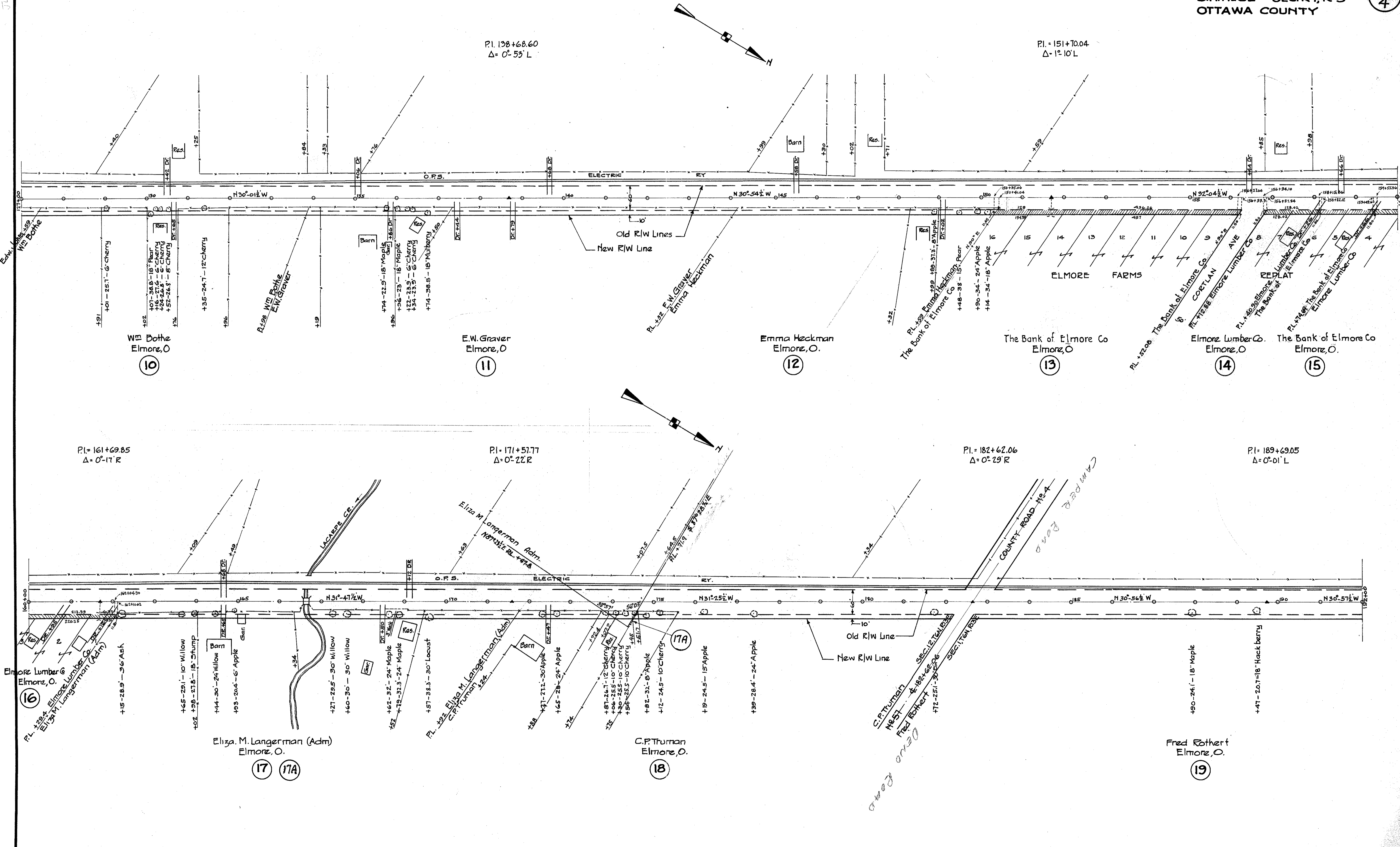
PI = 118+94.0
Δ = 0°-20 R



Scanned 10/17/10
FJF

R-4051 #4
E-18

Scanned July 1977



P.I. 138+68.60
Δ= 0°-53' L

P.I. 151+70.04
Δ= 1°-10' L

P.I. 161+69.85
Δ= 0°-17' R

P.I. 171+51.77
Δ= 0°-22' R

P.I. 182+62.06
Δ= 0°-29' R

P.I. 189+69.05
Δ= 0°-01' L

Starwood
July 1927

199+42.75
188+23.32
1+19.93

PI= 217+19.91
Δ= 0°-28' L

PI= 207+43.83
Δ= 20°-36'
D= 5°
T= 208.75
L= 412.00
R= 1146.26

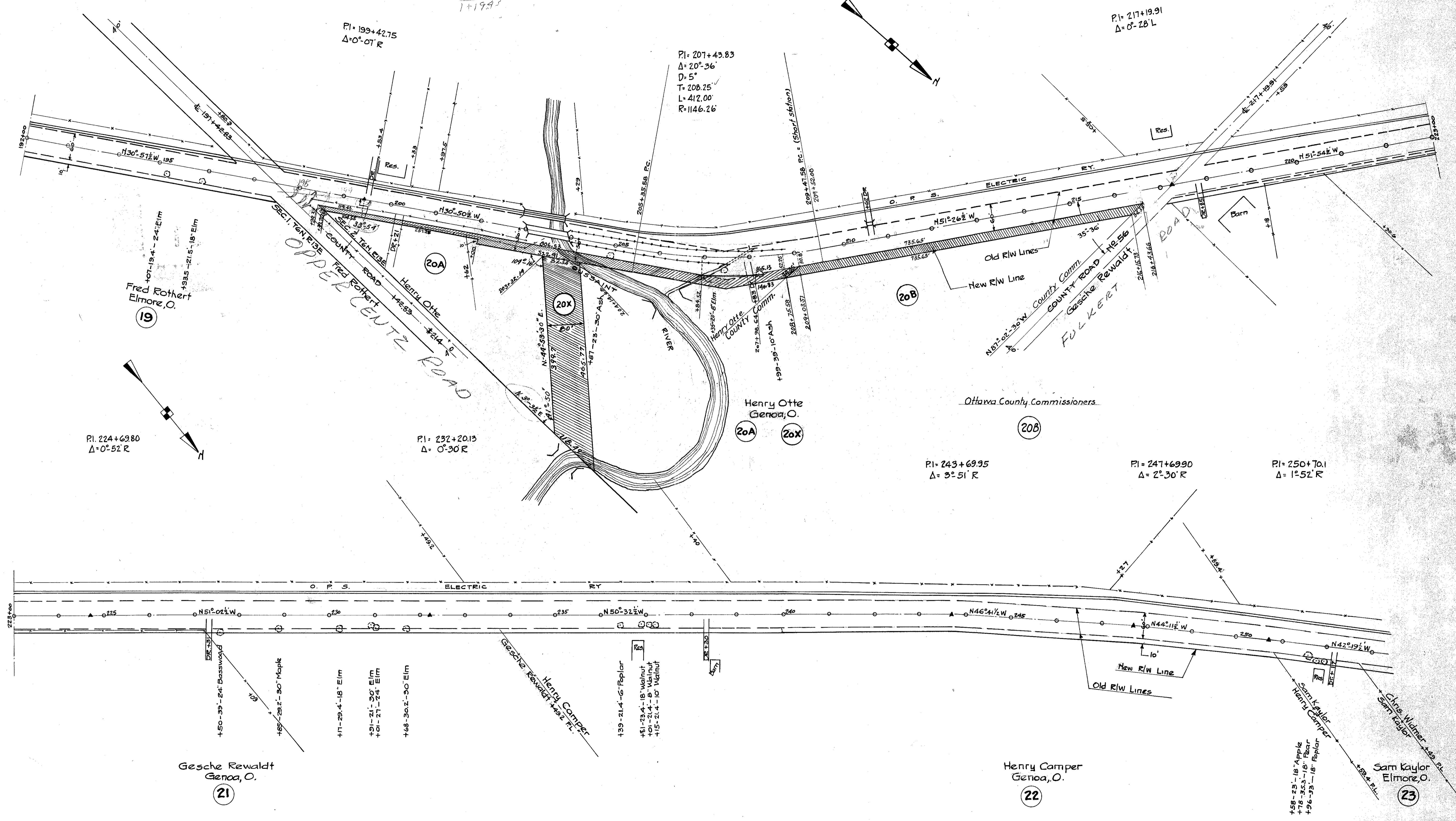
PI= 224+69.80
Δ= 0°-52' R

PI= 232+20.13
Δ= 0°-30' R

PI= 243+69.95
Δ= 3°-51' R

PI= 247+69.90
Δ= 2°-30' R

PI= 250+70.1
Δ= 1°-52' R



Fred Rothert
Elmore, O.
19

Henry Otte
Genoa, O.
20A 20X

Ottawa County Commissioners
20B

Gesche Rewaldt
Genoa, O.
21

Henry Camper
Genoa, O.
22

Sam Kaylor
Elmore, O.
23