

STATE OF OHIO  
DEPARTMENT OF TRANSPORTATION  
**OTT-51-5.84**  
CLAY TOWNSHIP  
OTTAWA COUNTY

F.H.W.A. REGION	STATE	PROJECT	1 19
5	OHIO	BRF-91(15)	

OTT-51-5.84  
OTTAWA COUNTY

DESIGN DESIGNATION

CURRENT A.D.T.	5230 (1989)
DESIGN YEAR A.D.T.	6830 (2009)
D.H.V.	683
D (DIRECTIONAL DISTRIBUTION)	55%
T (PERCENT B & C TRUCKS)	4%
V (DESIGN SPEED)	55 M.P.H.
LEGAL SPEED LIMIT	55 M.P.H.
FUNCTIONAL CLASSIFICATION	MINOR ARTERIAL
NO DESIGN EXCEPTIONS REQUIRED	

SEP 26 1989

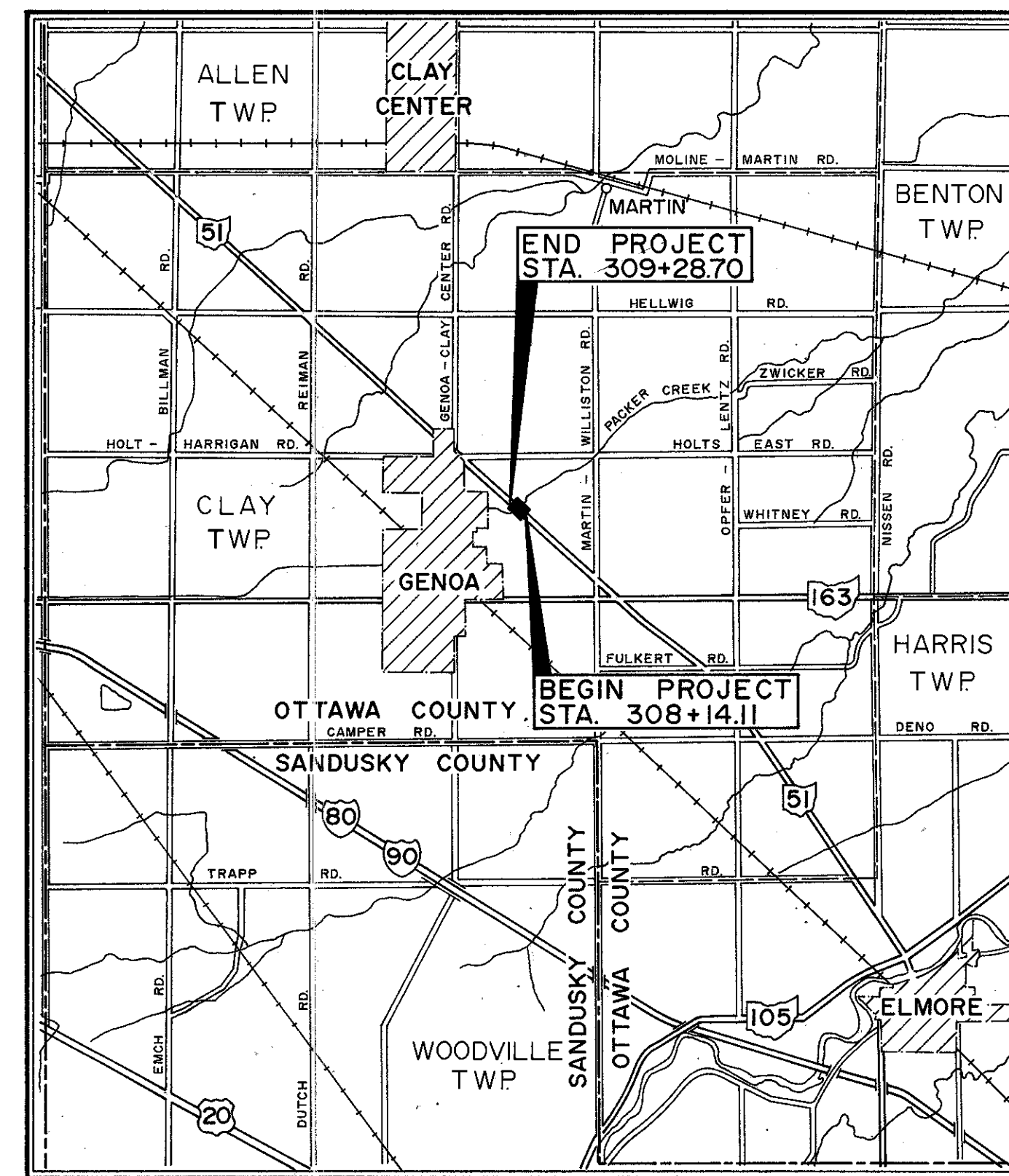
CONVENTIONAL SIGNS

COUNTY LINE	LIMITED ACCESS (only)	LA
TOWNSHIP LINE	RIGHT OF WAY (only)	R/W
SECTION LINE	TEMPORARY RIGHT OF WAY	T
CORPORATION LINE	EXISTING RIGHT OF WAY	
FENCE LINE (EXISTING) X-X-X (PROPOSED) X-X-X	PROPERTY LINE (IN EXISTING FENCE)	X-R-X
CENTER LINE 1-2-3-4-5	RAILROAD	
TREES STUMPS (TO BE REMOVED) X	GUARDRAIL (EXISTING)	(PROPOSED) . . . . .
UTILITY POLES: TELEPHONE $\phi$ POWER $\phi$ LIGHT $\phi$	CONSTRUCTION LIMITS	-----
SIGNS (EXISTING) P P (PROPOSED) + +		

INDEX OF SHEETS

TITLE SHEET	1
TYPICAL SECTIONS	2,3
GENERAL NOTES	4
GENERAL SUMMARY & CALCULATIONS	5
PLAN & PROFILE	6
CROSS SECTIONS	7-9
CHANNEL WORK	10, 11
MAINTENANCE OF TRAFFIC & DETOUR MAP	12
STRUCTURES OVER 20' SPAN	15-19

OMITTED SHEET NO'S 13, 14.



LOCATION MAP  
SCALE IN MILES  
0 1 2

PORTION TO BE IMPROVED  
FEDERAL AND STATE HIGHWAYS  
OTHER STREETS

UNDERGROUND UTILITIES  
**2 WORKING DAYS BEFORE YOU DIG**  
CALL...800-362-2764 (TOLL FREE)  
OHIO UTILITIES PROTECTION SERVICE  
NON-MEMBERS MUST BE CALLED DIRECTLY

LINE DATA			
	PROJECT	WORK	
BEGIN STATION	308 + 14.11	304+40	
END STATION	309 + 28.70	310+10	
GROSS LENGTH	114.59 L.F.	570.00 L.F.	
NET LENGTH	114.59 L.F.	570.00 L.F.	
	0.022 MILES	0.108 MILES	

STRUCTURE PLANS REVIEWED BY:  
**Burgess & Noble, Limited**  
Columbus, Ohio

PREPARED AND RECOMMENDED BY:  
**KEM** K.E. MCCARTNEY & ASSOCIATES  
CONSULTING ENGINEERS MANSFIELD, OHIO

SUPPLEMENTAL PRINTS OF STANDARD CONSTRUCTION DRAWINGS			
BP-5	10-1-87	AS-1-81	11-27-81
BP-11	1-30-84	PSBD-1-81	9-18-81
GR-1	1-11-85	DBR-2-73	4-10-73
GR-2B	2-5-82	EXJ-3-82	8-1-84
GR-3	1-21-85		
GR-4	2-5-82	MT-99.10	11-14-86
		MT-96.11	9-9-88
		MT-96.20	9-9-88
MC-4	7-26-76	MT-96.25	9-9-88
MC-9A	1-11-85	MT-97.10	4-29-88
MC-11	8-1-78		

SUPPLEMENTAL SPECIFICATIONS		
802	5-4-88	942 10-29-86
836	11-12-85	944 6-24-89
847	10-17-83	
849	12-24-85	
852	6-10-87	
853	6-26-78	
902	8-31-79	
921	12-4-72	
923	1-10-69	
947	10-17-83	
949	9-26-86	
952	12-14-88	
956	6-26-78	

PROJECT	OTT-51-5.84
DATE OF LETTING	19 CONTRACT NO.

DEPARTMENT OF TRANSPORTATION  
FEDERAL HIGHWAY ADMINISTRATION

APPROVED:  
DIVISION ADMINISTRATOR DATE

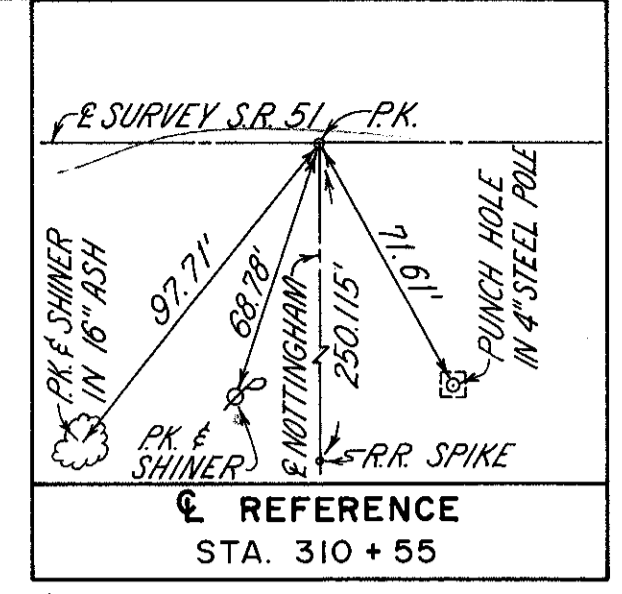
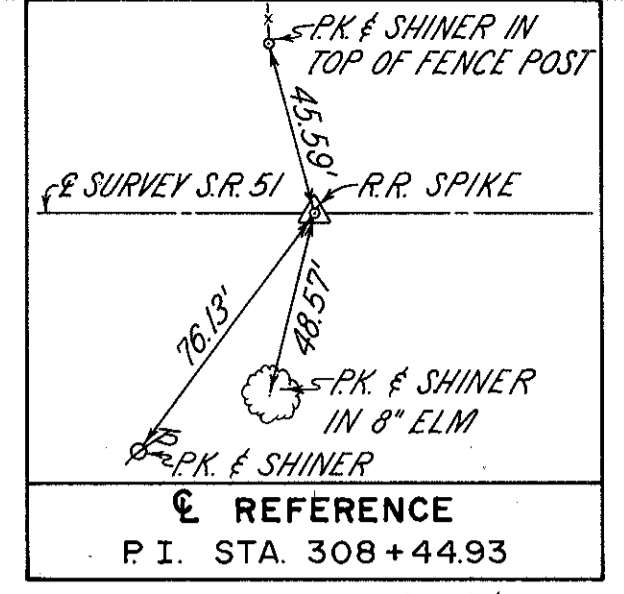
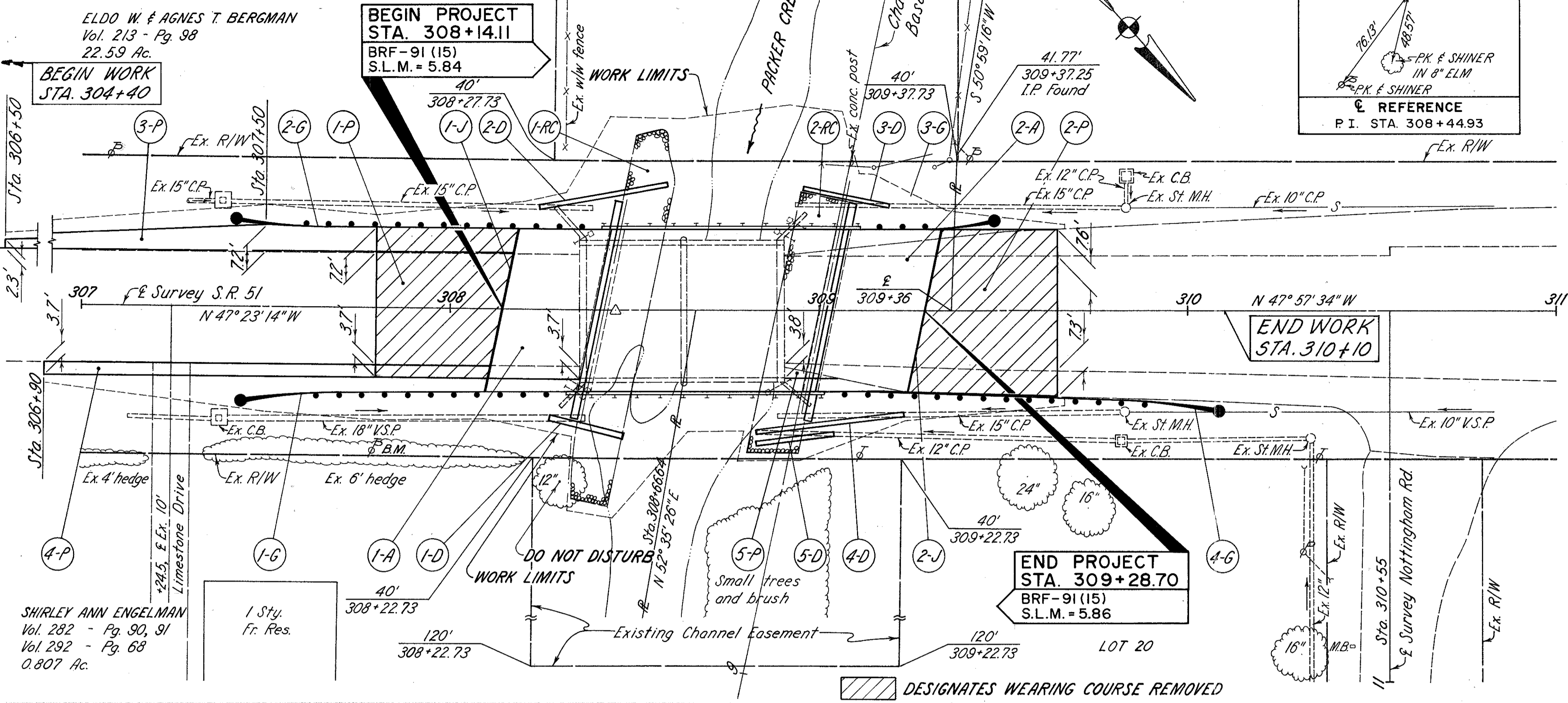
B.M. - R.R spike in utility pole  
Sta. 307+79, 38.7' Rt.  
Elev = 618.21

P.I. Sta. 308+44.93  
 $\Delta = 0^\circ 34' 20''$  Lt.  
No Curve

ST. JOHN'S UNITED  
CHURCH OF CHRIST  
Vol. 303 - Pg. 952

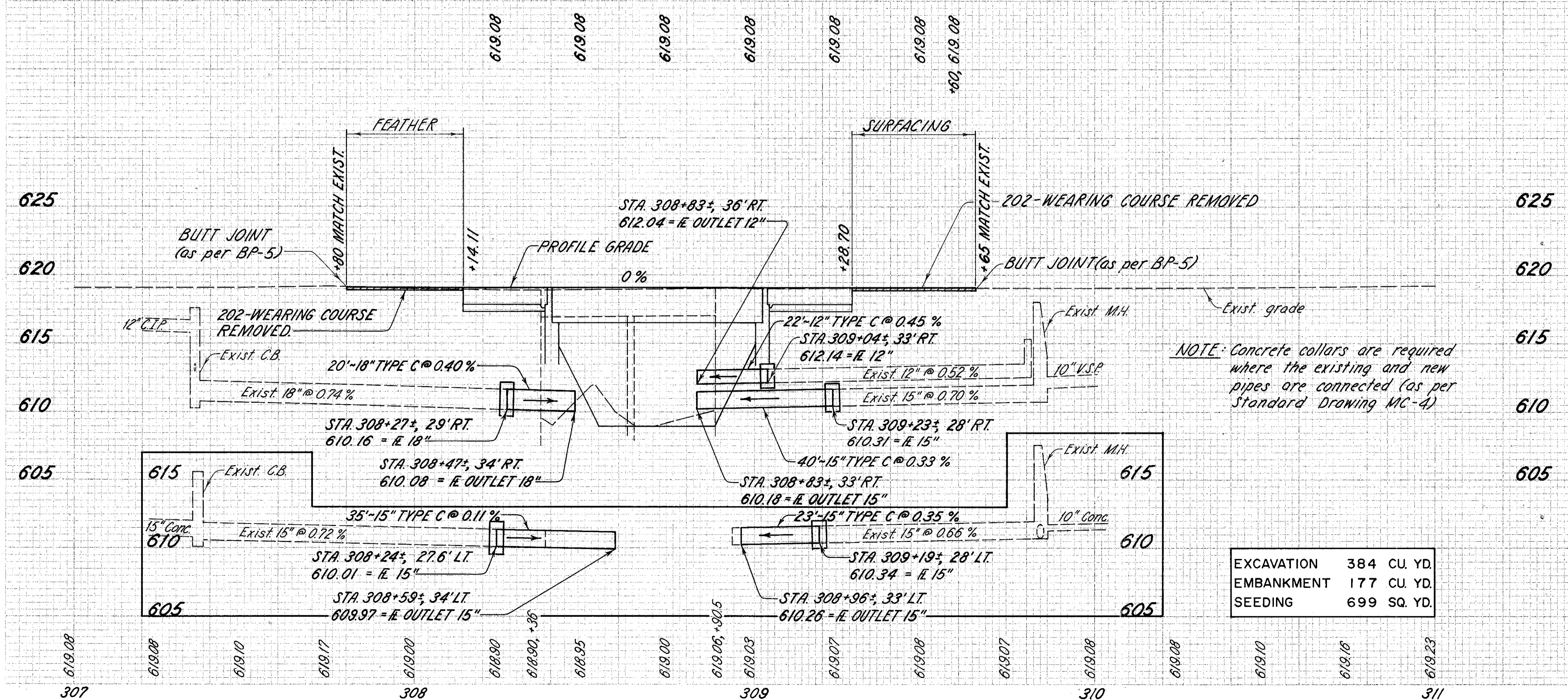
QUANTITIES		FILE #	STATE	PROJECT
CALCULATED	RKH 2-89	5	OHIO	
CHECKED	HWL 2-89			

OTT-51-5.84  
OTTAWA COUNTY



REFERENCE NO.	SIDE	STATION	ITEMS								
			202*	203*	301*	304*	404*	407*	611* Special		
			Wearing Course Removed	Subgrade Compaction	6" Bituminous Aggregate Base, AC-20	Aggregate Base, As Per Plan	Asphalt Concrete, AC-20 (1 1/4")	Tack Coat	Reinforced Concrete Approach Slab, 7'-15"	Pressure Relief Joint, Type B,	
			Sq. Yd.	Sq. Yd.	Cu. Yd.	Cu. Yd.	Cu. Yd.	Gal.	Sq. Yd.	Lin. Ft.	
1-A	Lt	308+14.11	308+39.11								
2-A	Lt	308+08.70	309+28.70	122.22			20.37			122.22	
1-P	Lt	307+80	308+14.11	155.39							
2-P	Lt	309+28.70	309+65	177.49		0.49		5.40	15.5		
3-P	Lt	308+18	308+18	72.73		17.86		3.72			
4-P	Rt	308+90	308+35			9.94		2.07			
5-P	Rt	308+90.5	309+11			0.72		0.15			
1-J	Lt	308+10	308+18							39	
2-J	Lt	309+24	309+33							45	
<b>Totals</b>				332.86	317.17	29.01	40.74	17.50	33.2	244.44	84

\* For Calculations see sheet no. 5.



REFERENCE NO.	SIDE	STATION	ITEMS								
			202	601	603			606	606		
			Pipe Removed	Rock Channel Protection Type C, Without Filter	Conduit, Type C			Guardrail, Type 5	Bridge Terminal Assembly, Type B	Anchor Assembly, Type A	
			Lin. Ft.	Cu. Yd.	12" L.F.	15" L.F.	18" L.F.	Lin. Ft.	Each	Each	
1-D	Rt	308+27	308+47	10			20				
2-D	Lt	308+24	308+59	14			35				
3-D	Lt	308+96	309+19	25			23				
4-D	Lt	308+83	309+23	35			40				
5-D	Rt	308+83	309+04	21			22				
1-G	Rt	307+44.60	308+32.10					62.50	1	1	
2-G	Lt	307+41.95	308+41.95					75.00	1	1	
3-G	Lt	309+10.70	309+47.7					12.50	1	1	
4-G	Rt	309+00.85	310+07.10					81.25	1	1	
1-RC	Lt	308+42.36	308+53.95		80.1						
2-RC	Lt	308+88.86	309+00.45		50.5						
<b>Totals</b>				105	130.6	22	98	20	231.25	4	4