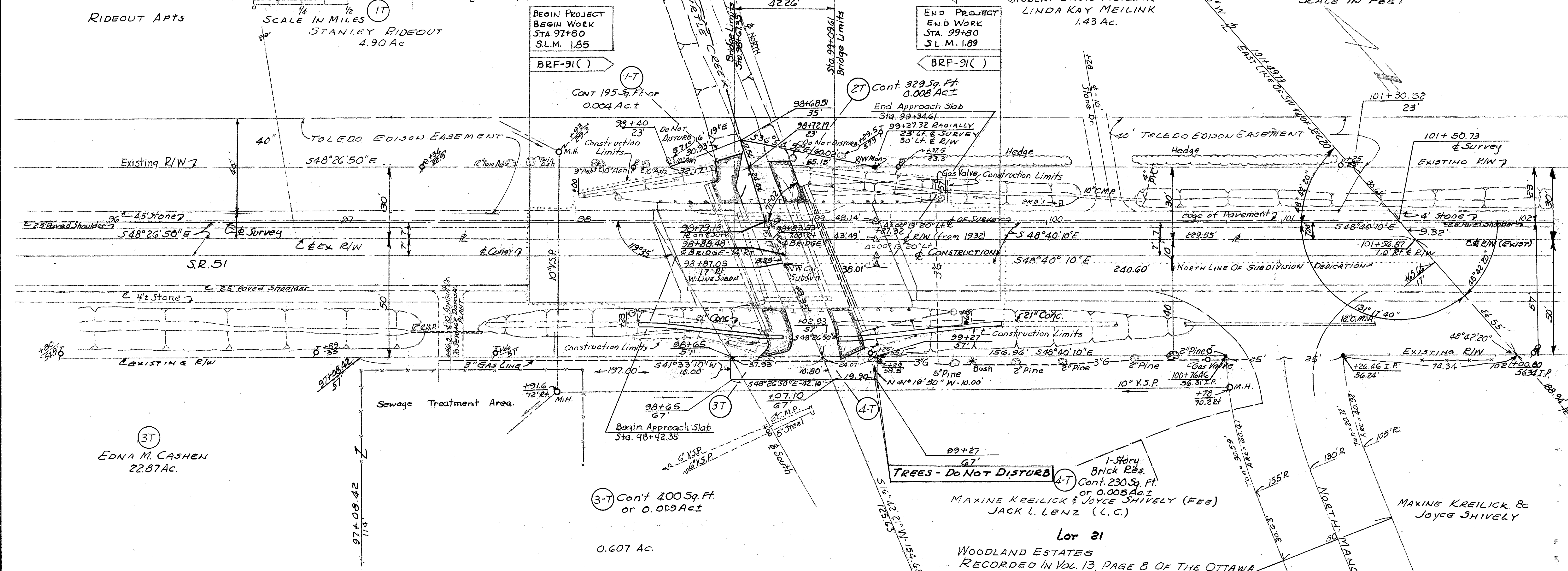
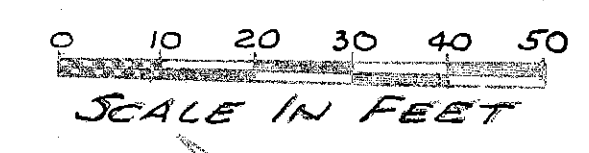
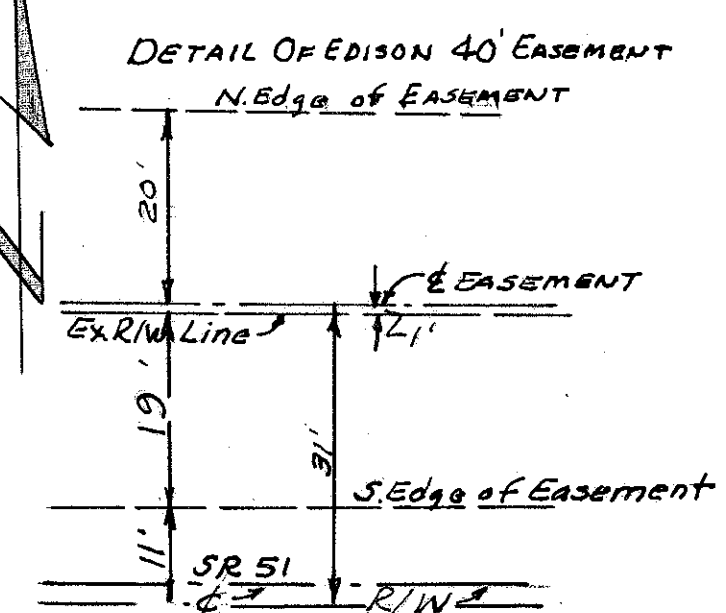
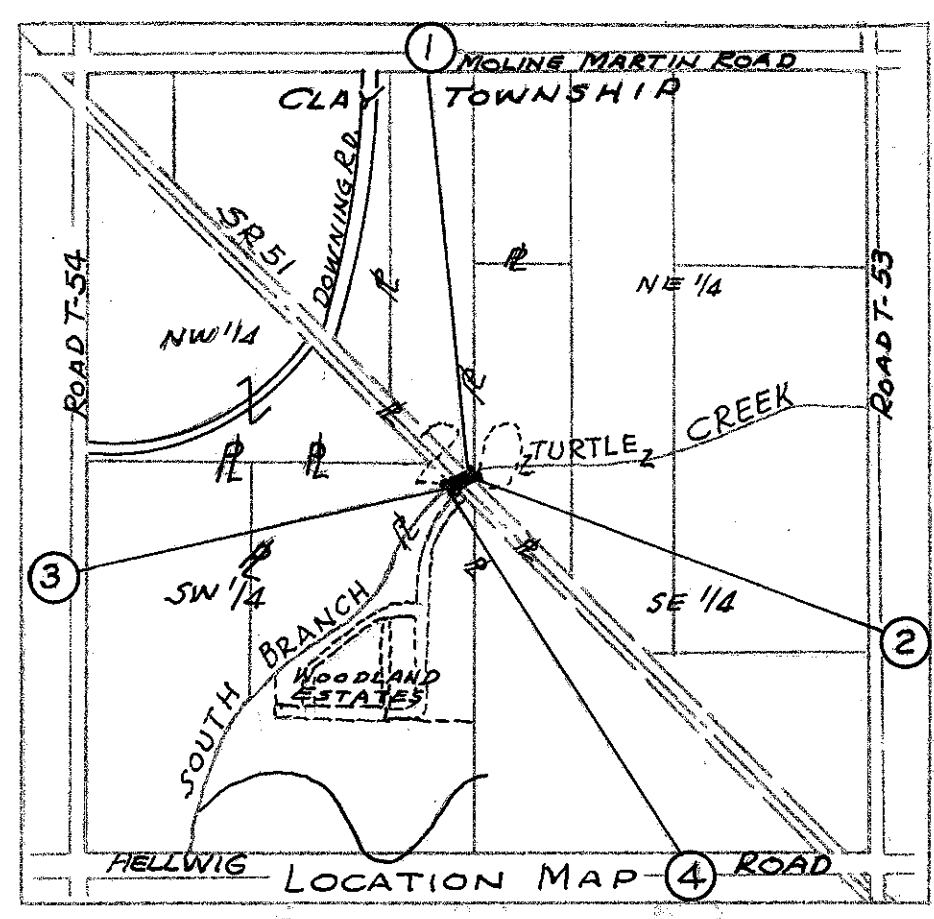
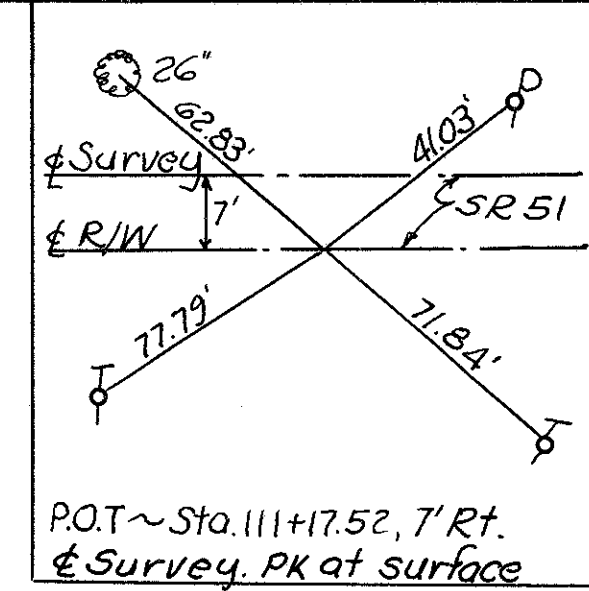
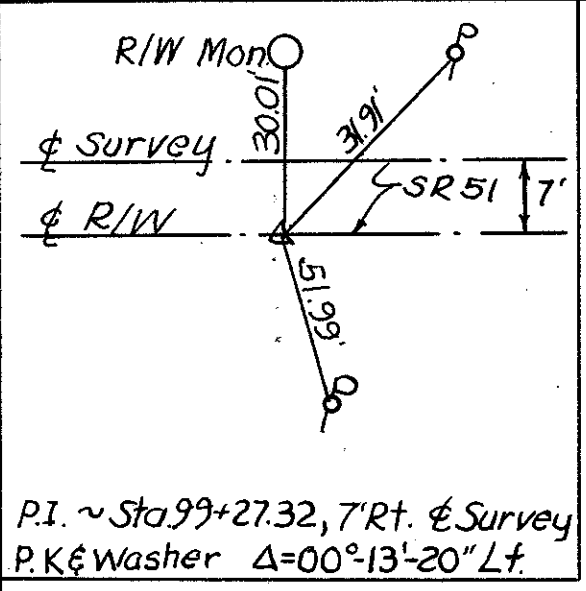


FHWA REGION	STATE	PROJECT	
5	OHIO		

OTT-51-01.87
JOB No. 027230

R/W
OTT-51-01.87



2 STY BRICK APTS

RIDEOUT APTS
SCALE IN MILES
STANLEY RIDEOUT
4.90 Ac

BEGIN PROJECT
BEGIN WORK
STA. 97+80
S.L.M. 1.85

END PROJECT
END WORK
STA. 99+80
S.L.M. 1.89

BRF-91()

BRF-91()

CONT 195 Sq. Ft. or 0.004 Ac. ±

CONT 329 Sq. Ft. or 0.008 Ac. ±

3-T EDNA M. CASHEN
22.87 Ac.

3-T Cont 400 Sq. Ft. or 0.009 Ac. ±

0.607 Ac.

TREES - DO NOT DISTURB
1-Story Brick Res.
Cont. 230 Sq. Ft. or 0.005 Ac. ±
MAXINE KREILICK & JOYCE SHIVELY (Fee)
JACK L. LENZ (L.C.)

Lot 21

WOODLAND ESTATES
RECORDED IN VOL. 13, PAGE 8 OF THE OTTAWA COUNTY PLAT RECORDS, FEB. 4, 1964.

R/W SUMMARY

PARCEL No	OWNER	DEED RECORD		DEED AREA ACRES	TOTAL PRO ACRES	TOTAL TAKE ACRES	PRO IN TAKE ACRES	NET TAKE ACRES	RESIDUE ACRES	REMARKS
		VOL.	PAGE							
1-T	RIDEOUT APARTMENTS	282	918	4.90	0.14	0.004	0	0.004	4.76	EASEMENT TO TOLEDO EDISON
2-T	ROBERT DAVID MEILINK & LINDA KAY MEILINK	286	946	1.43	-	0.008	-	0.008	1.43	EASEMENT TO TOLEDO EDISON
3-T	EDNA M. CASHEN	242	168	22.87	0.46	0.009	0.00	0.009	22.41	EASEMENT TO COUNTY
4-T	MAXINE KREILICK & JOYCE SHIVELY (Fee) JACK L. LENZ (LC)	260 211	512 685	0.4028	-	0.005	-	0.005	5.29	Lot 21

DATE	PAR	REMARKS
Oct 27, 1988	4-T	Corrected TITLE