

O.D.O.T. DISTRICT 2 SURVEY OFFICE (USE ONLY)

PERSONNEL

REFERENCE NO. 1

SHEET 1 OF 7

NOTES BALBAUGH

DATE 4/15/20

ROUTE SR 51

H.C. LEU

WEATHER CLOUDY

COUNTY OTTAWA

R.C. BALBAUGH

TEMP. 39°

TOWNSHIP HARRIS

SECTION 19

DWG BY NIESE PID 94324

T 6 N R 14 E

TYPE MONUMENT MAG/WASHER

ON SURFACE - ~~BELOW~~ ON

OFFSET  $\odot$  PAVEMENT ON LT : RT

- TO - EDGE PAVEMENT

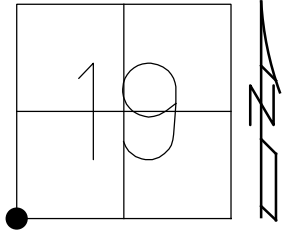
STATION: 0+00

HORIZ. DATUM: NAD83 2011

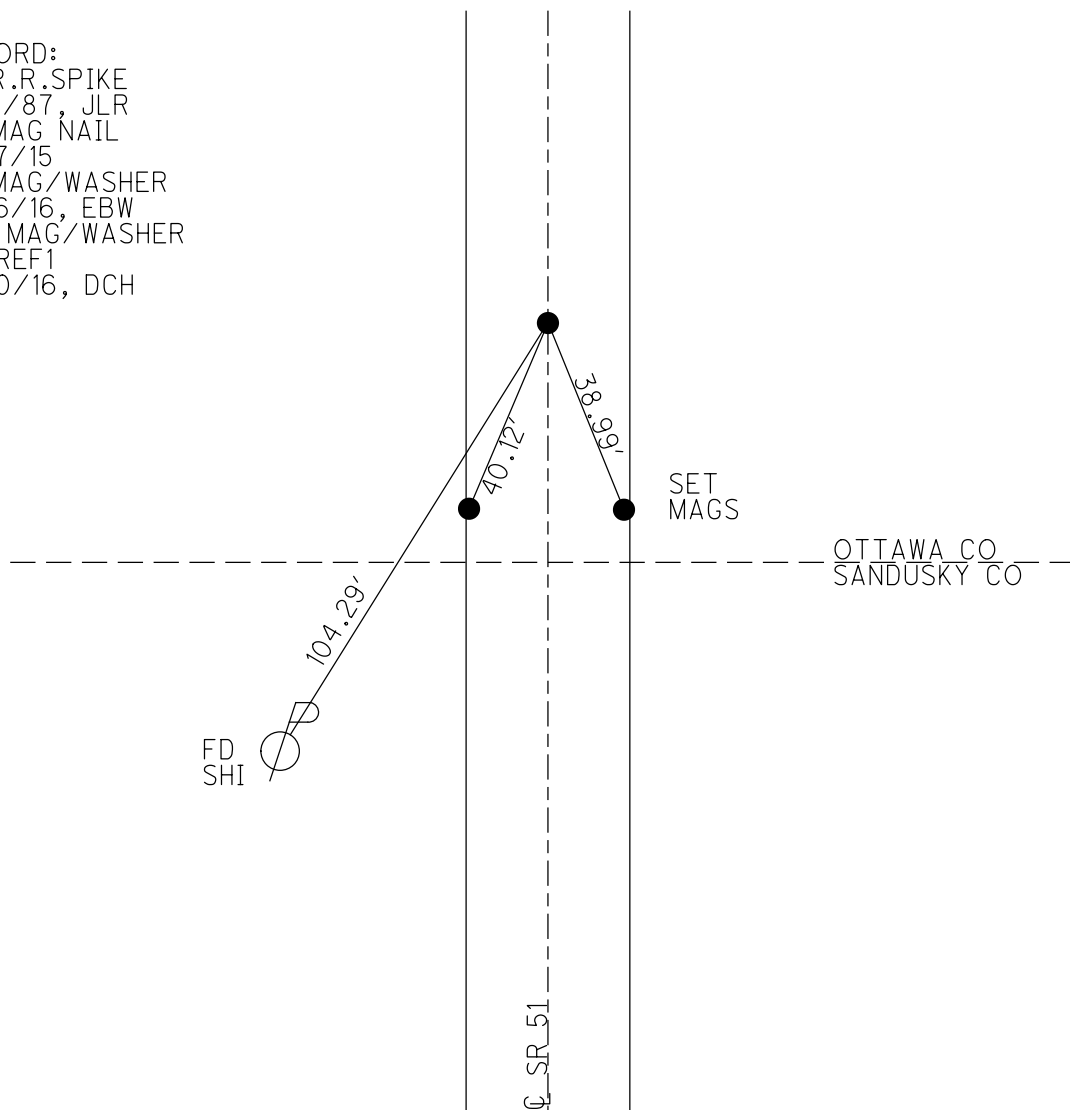
GEOID: NAVD88 2012A

GRID: NORTHING: 653552.341

EASTING: 1749345.865



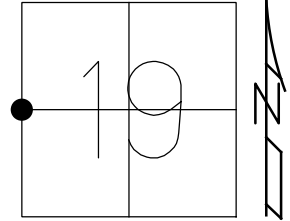
RECORD:  
 FD R.R. SPIKE  
 9/21/87, JLR  
 FD MAG NAIL  
 4/27/15  
 FD MAG/WASHER  
 4/26/16, EBW  
 SET MAG/WASHER  
 NEWREF1  
 9/30/16, DCH



O.D.O.T. DISTRICT 2 SURVEY OFFICE (USE ONLY)

PERSONNEL \_\_\_\_\_ REFERENCE NO. 2 SHEET 2 OF 7  
 NOTES BALBAUGH DATE 4/15/20 ROUTE SR 51  
 H.C. LEU WEATHER CLOUDY COUNTY OTTAWA  
 R.C. BALBAUGH TEMP. 39° TOWNSHIP HARRIS  
 DWG BY NIESE PID 94324 SECTION 19  
 T 6 N R 14 E

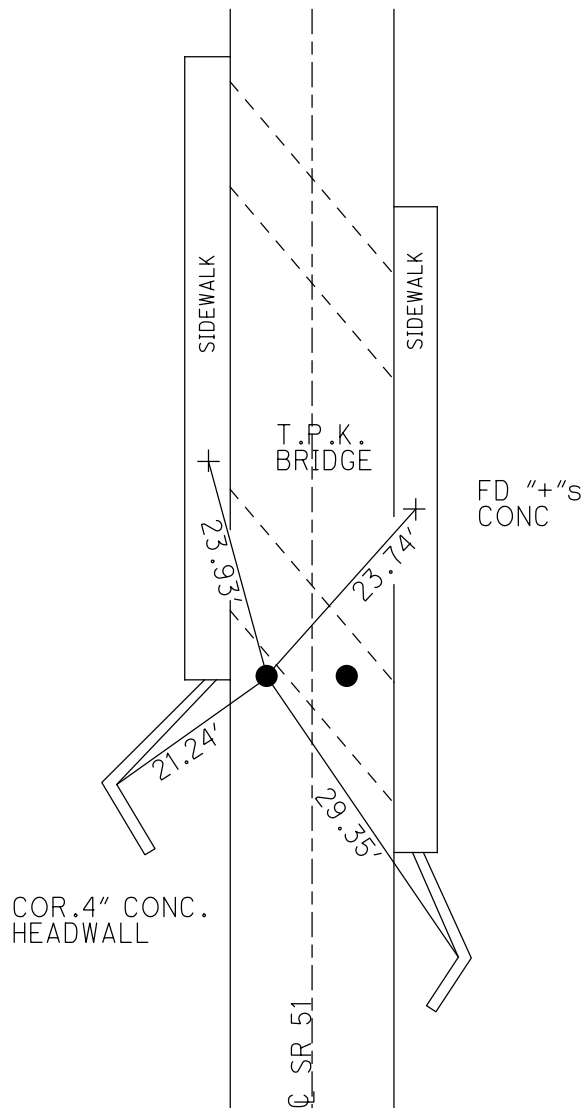
TYPE MONUMENT P.K./WASHER  
 ON SURFACE - ~~BELOW~~ ON  
 OFFSET 0 PAVEMENT ON LT : RT  
- TO - EDGE PAVEMENT  
 STATION: 26+79



HORIZ.DATUM: NAD83 2011 GEOID: NAVD88 2012A  
 GRID: NORTHING: - EASTING: -

RECORD:  
 ORIGIN UNKNOWN  
 FD P.K.NAIL  
 ATOP P.K.NAIL  
 9/21/87  
 D.N.F.  
 4/15/20, JLL

DIST.2-2A = 0.77' REC



O.D.O.T. DISTRICT 2 SURVEY OFFICE (USE ONLY)

PERSONNEL

REFERENCE NO. 2 A

SHEET 3 OF 7

NOTES BALBAUGH

DATE 4/15/20

ROUTE SR 51

H.C. LEU

WEATHER CLOUDY

COUNTY OTTAWA

R.C. BALBAUGH

TEMP. 39°

TOWNSHIP HARRIS

SECTION 19

DWG BY NIESE

PID 94324

T 6 N R 14 E

TYPE MONUMENT P.K./WASHER

ON SURFACE - ~~BELOW~~ ON

OFFSET CL PAVEMENT ON LT : RT

- TO - EDGE PAVEMENT

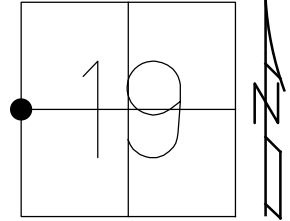
STATION: 26+79

HORZ. DATUM: NAD83 2011

GEOID: NAVD88 2012A

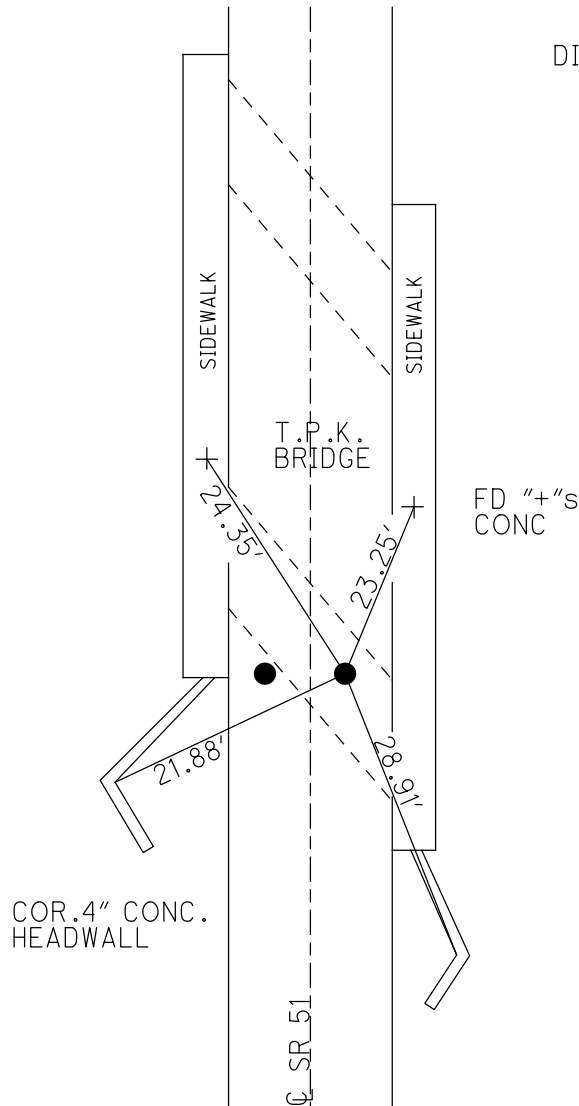
GRID: NORTHING: -

EASTING: -



RECORD:  
ORIGIN UNKNOWN  
FD P.K.NAIL  
ATOP P.K.NAIL  
9/21/87  
D.N.F.  
4/15/20, JLL

DIST. 2-2A = 0.77' REC



O.D.O.T. DISTRICT 2 SURVEY OFFICE (USE ONLY)

PERSONNEL

REFERENCE NO. 3

SHEET 4 OF 7

NOTES BALBAUGH

DATE 4/15/20

ROUTE SR 51

H.C. LEU

WEATHER CLOUDY

COUNTY OTTAWA

R.C. BALBAUGH

TEMP. 64°

TOWNSHIP HARRIS

SECTION 19

DWG BY NIESE

PID 94324

T 6 N R 14 E

TYPE MONUMENT NAIL

ON SURFACE - ~~BELOW~~ ON

OFFSET CL PAVEMENT 0.8' LT : ~~RT~~

- TO - EDGE PAVEMENT

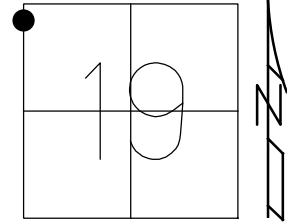
STATION: 52+07.09

HORZ. DATUM: NAD83 2011

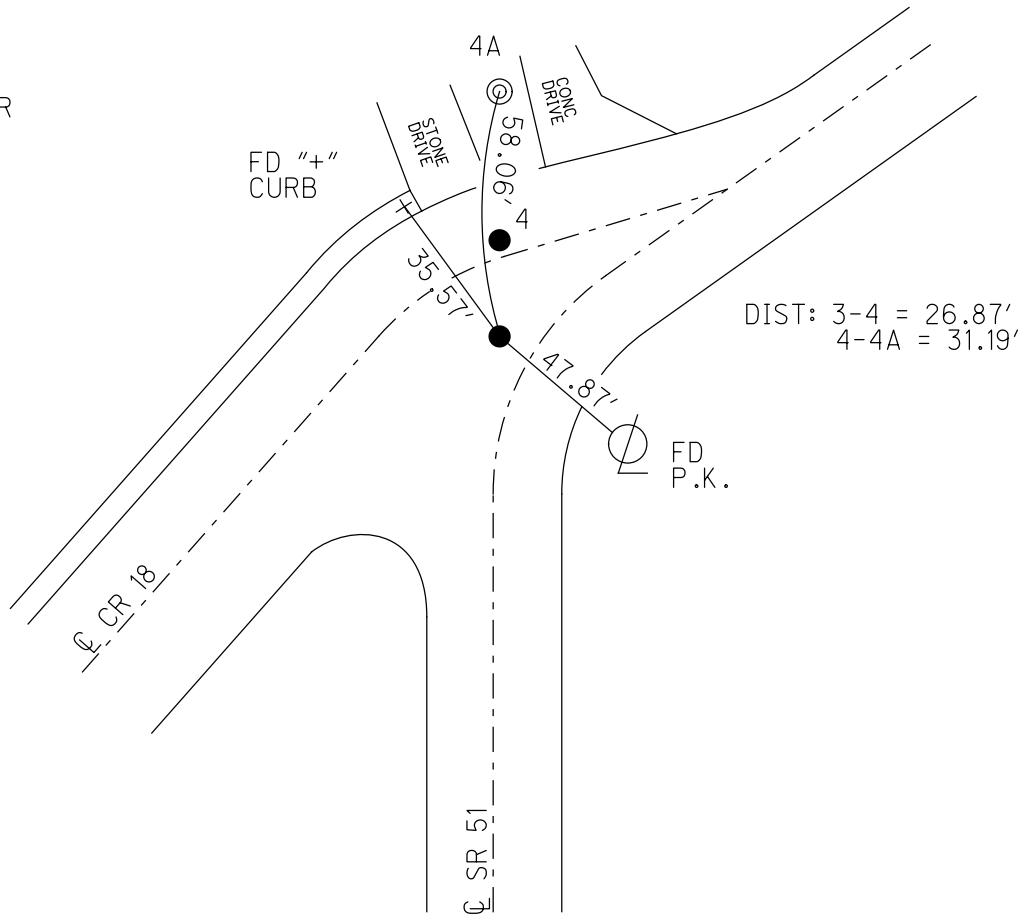
GEOID: NAVD88 2012A

GRID: NORTHING: 658759.381

EASTING: 1749329.766



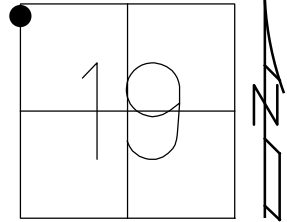
RECORD: P.I.  
 STA 51+98.39  
 $\Delta=45^{\circ}27'30''$  RT  
 FD P.K.  
 ATOP P.K.  
 9/21/87, JLR  
 4/27/15, EBW  
 FD NAIL  
 4/26/16, DCH  
 SET MAG/WASHER  
 NEWREF3  
 9/30/16, DCH



O.D.O.T. DISTRICT 2 SURVEY OFFICE (USE ONLY)

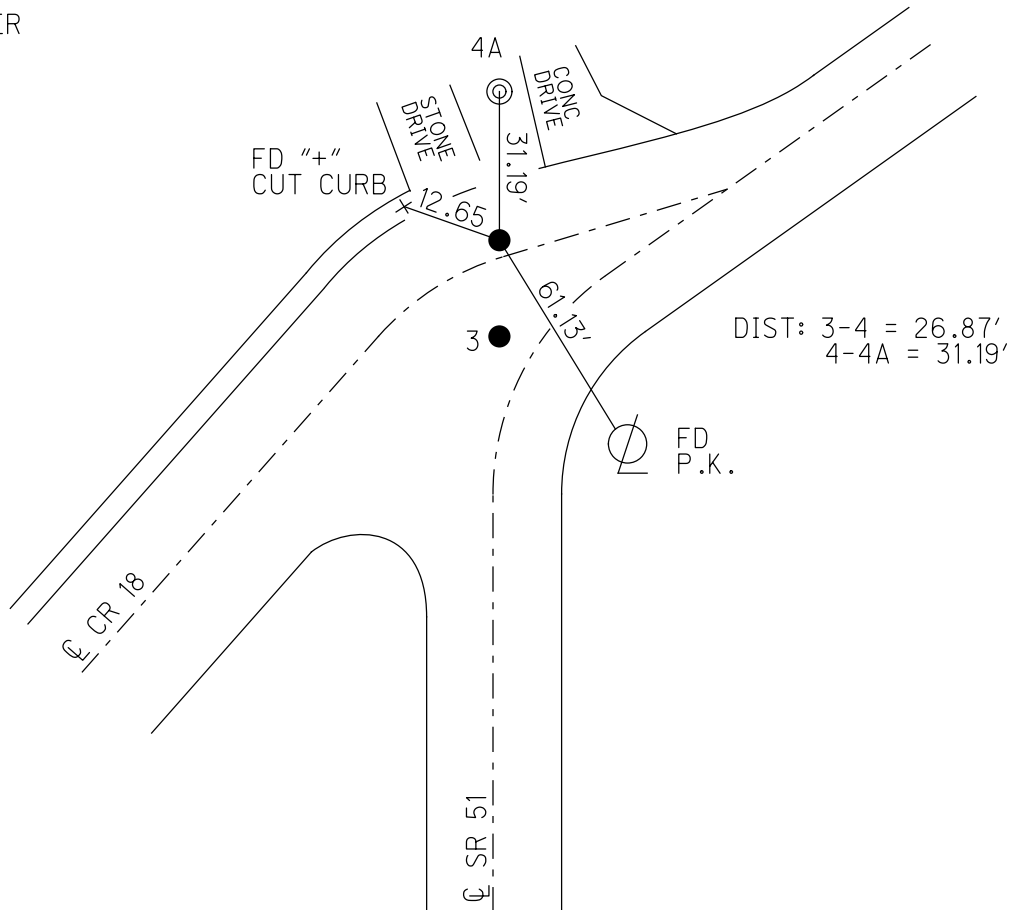
PERSONNEL \_\_\_\_\_ REFERENCE NO. 4 SHEET 5 OF 7  
 NOTES LEU DATE 4/26/16 ROUTE SR 51  
 H.C. HOMAN WEATHER PARTLY CLOUDY COUNTY OTTAWA  
 R.C. LEU TEMP. 64° TOWNSHIP HARRIS  
 SECTION 19  
 DWG BY NIESE PID 94324 T 6 N R 14 E

TYPE MONUMENT MAG NAIL  
 ON SURFACE - ~~BELOW~~ ON  
 OFFSET ☐ PAVEMENT 19.2' LT : RT  
- TO - EDGE PAVEMENT  
 STATION: 52+25.88



HORZ.DATUM: NAD83 2011 GEOID: NAVD88 2012A  
 GRID: NORTHING: 658786.235 EASTING: 1749329.885

RECORD:  
 FD P.K.NAIL  
 4/27/15, EBW  
 FD MAG NAIL  
 4/26/16, DCH  
 SET MAG/WASHER  
 NEWREF4  
 9/30/16, DCH



O.D.O.T. DISTRICT 2 SURVEY OFFICE (USE ONLY)

PERSONNEL

REFERENCE NO. 4 A

SHEET 6 OF 7

NOTES LEU

DATE 4/26/16

ROUTE SR 51

H.C. HOMAN

WEATHER PARTLY CLOUDY

COUNTY OTTAWA

R.C. LEU

TEMP. 64°

TOWNSHIP HARRIS

SECTION 19

DWG BY NIESE

PID 94324

T 6 N R 14 E

TYPE MONUMENT MAG/WASHER

ON SURFACE - ~~BELOW~~ ON

OFFSET  $\varnothing$  PAVEMENT 41.44' LT : ~~RT~~

- TO - EDGE PAVEMENT

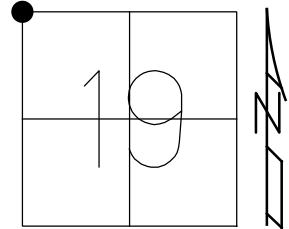
STATION: 52+47.72

HORIZ.DATUM: NAD83 2011

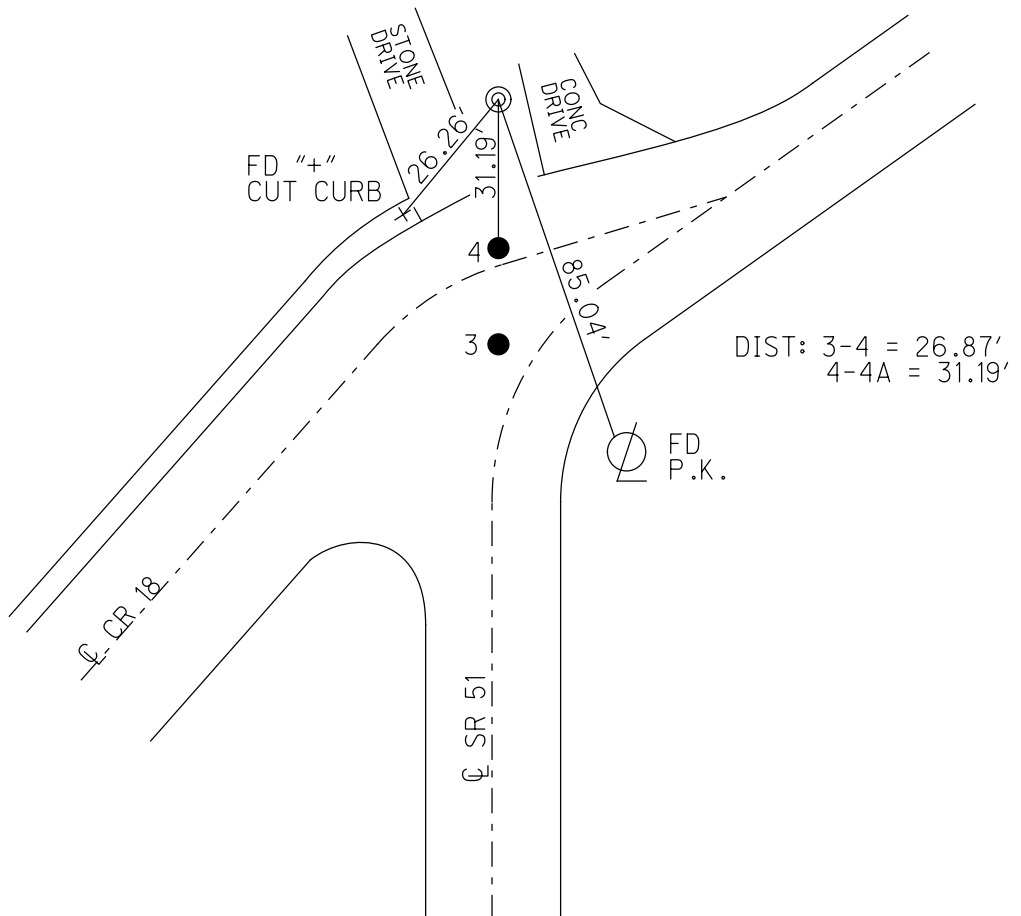
GEOID: NAVD88 2012A

GRID: NORTHING: 658817.431

EASTING: 1749329.773



RECORD:  
 STA 52+66.45  
 FD CMON  
 4/27/15, EBW  
 FD CMON  
 NEWREFA4  
 9/30/16, DCH



O.D.O.T. DISTRICT 2 SURVEY OFFICE (USE ONLY)

PERSONNEL

REFERENCE NO. 5

SHEET 7 OF 7

NOTES LEU

DATE 4/26/16

ROUTE SR 51

H.C. HOMAN

WEATHER PARTLY CLOUDY

COUNTY OTTAWA

R.C. LEU

TEMP. 62°

TOWNSHIP HARRIS

SECTION 19

DWG BY NIESE

PID 94324

T 6 N R 14 E

TYPE MONUMENT MAG/WASHER

ON SURFACE - ~~BELOW~~ ON

OFFSET  $\odot$  PAVEMENT 5.0' LT : ~~RT~~

- TO - EDGE PAVEMENT

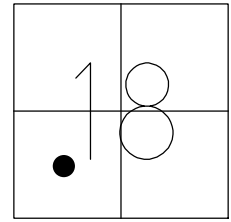
STATION: 71+26.42

HORZ. DATUM: NAD83 2011

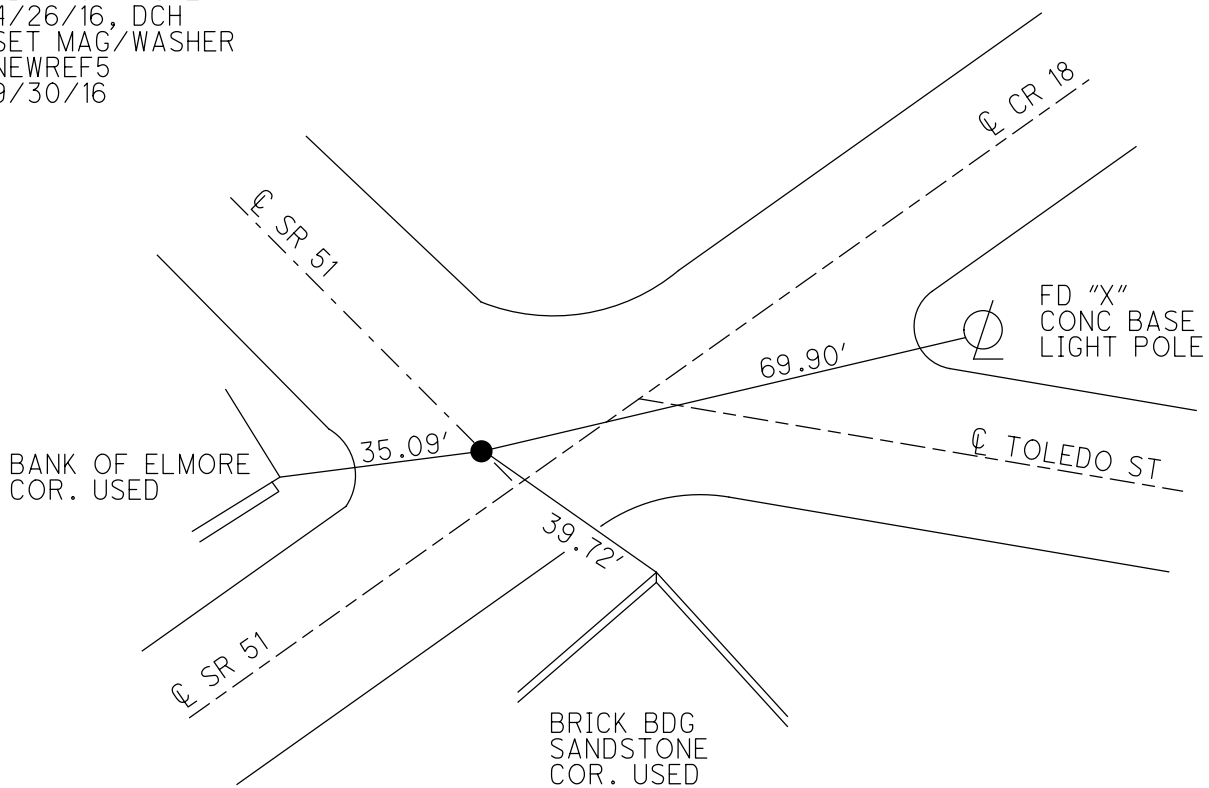
GEOID: NAVD88 2012A

GRID: NORTHING: 660104.037

EASTING: 1750699.488



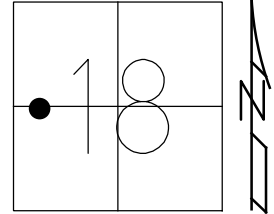
RECORD: P.I.  
 STA. 71+06.64  
 FD P.K.NAIL  
 ATOP P.K.NAIL  
 FD P.K./WASHER  
 9/21/87, JLR  
 4/23/15, EBW  
 FD MAG/WASHER  
 4/26/16, DCH  
 SET MAG/WASHER  
 NEWREF5  
 9/30/16



O.D.O.T. DISTRICT 2 SURVEY OFFICE (USE ONLY)

PERSONNEL \_\_\_\_\_ REFERENCE NO. 6 SHEET 1 OF 18  
 NOTES BALBAUGH DATE 4/15/20 ROUTE SR 51  
 H.C. LEU WEATHER CLOUDY COUNTY OTTAWA  
 R.C. BALBAUGH TEMP. 39° TOWNSHIP HARRIS  
 DWG BY NIESE PID 94324 SECTION 18  
 T 6 N R 14 E

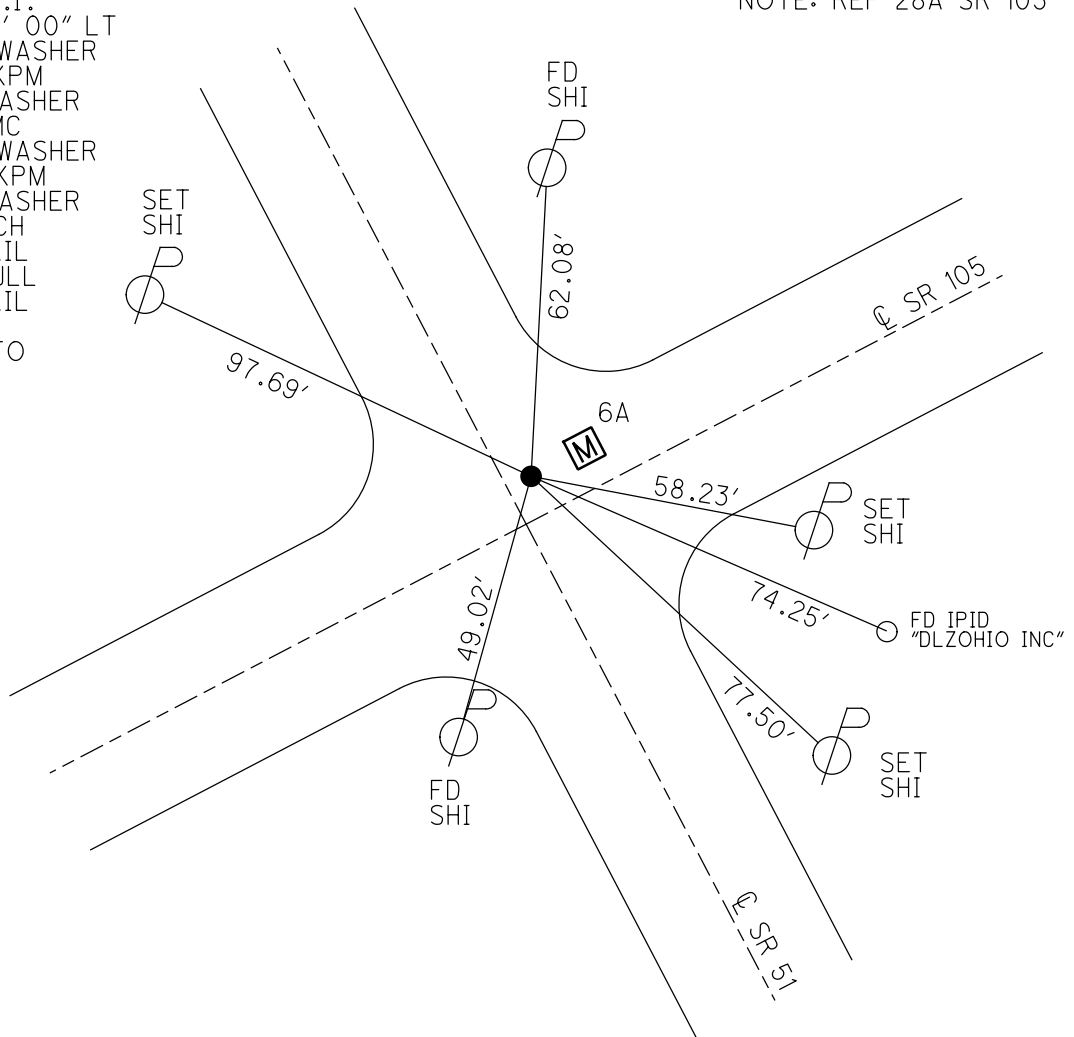
TYPE MONUMENT MAG NAIL  
 ON SURFACE - ~~BELOW~~ ON  
 OFFSET  $\odot$  PAVEMENT 2.1' LT : RT  
- TO - EDGE PAVEMENT  
 STATION: 83+32.54



HORZ. DATUM: NAD83 2011 GEOID: NAVD88 2012A  
 GRID: NORTHING: 661233.235 EASTING: 1750275.579

RECORD: P.I.  
 $\Delta = 12^{\circ} 34' 00''$  LT  
 SET P.K./WASHER  
 6/21/94, KPM  
 FD P.K./WASHER  
 4/3/00, MC  
 SET P.K./WASHER  
 6/21/00, KPM  
 FD P.K./WASHER  
 5/7/13, DCH  
 FD MAG NAIL  
 4/29/15, JLL  
 FD MAG NAIL  
 REFA28  
 4/5/18, JFO

NOTE: REF 28A SR 105





O.D.O.T. DISTRICT 2 SURVEY OFFICE (USE ONLY)

PERSONNEL

REFERENCE NO. 6 A

SHEET 2 OF 18

NOTES BALBAUGH

DATE 4/15/20

ROUTE SR 51

H.C. LEU

WEATHER CLOUDY

COUNTY OTTAWA

R.C. BALBAUGH

TEMP. 39°

TOWNSHIP HARRIS

SECTION 18

DWG BY NIESE

PID 94324

T 6 N R 14 E

TYPE MONUMENT MAG NAIL

ON SURFACE - ~~BELOW~~ ON

OFFSET 8.2' LT : RT

- TO - EDGE PAVEMENT

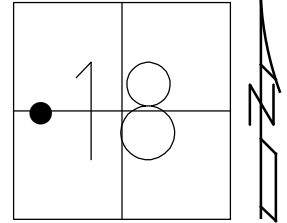
STATION: 83+32.54

HORZ. DATUM: NAD83 2011

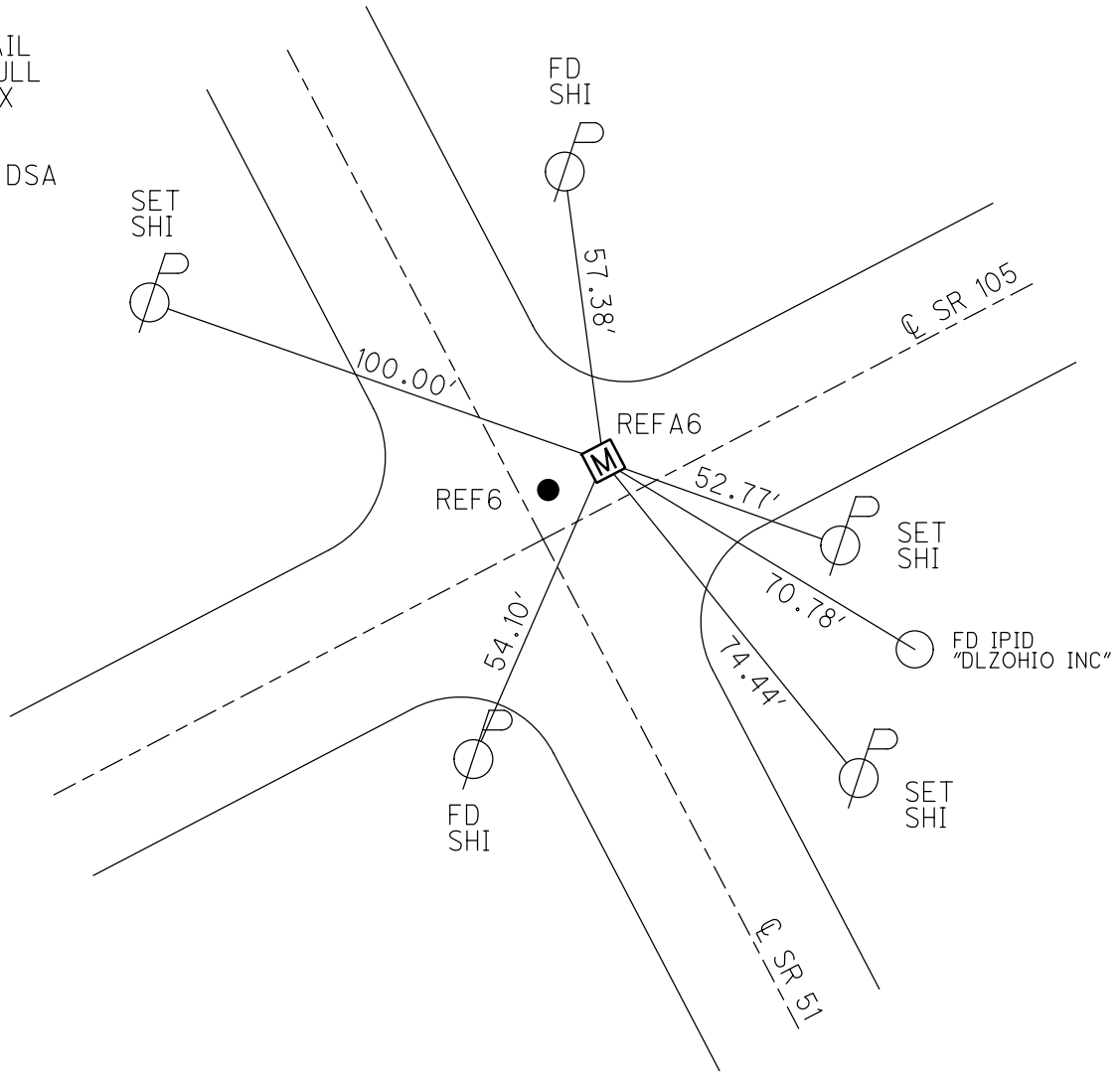
GEOID: NAVD88 2012A

GRID: NORTHING: 661235.913

EASTING: 1750281.064



RECORD:  
 FD MAG NAIL  
 4/15/20, JLL  
 FD MONBOX  
 W/1" IPIN  
 REFA6  
 10/13/20, DSA

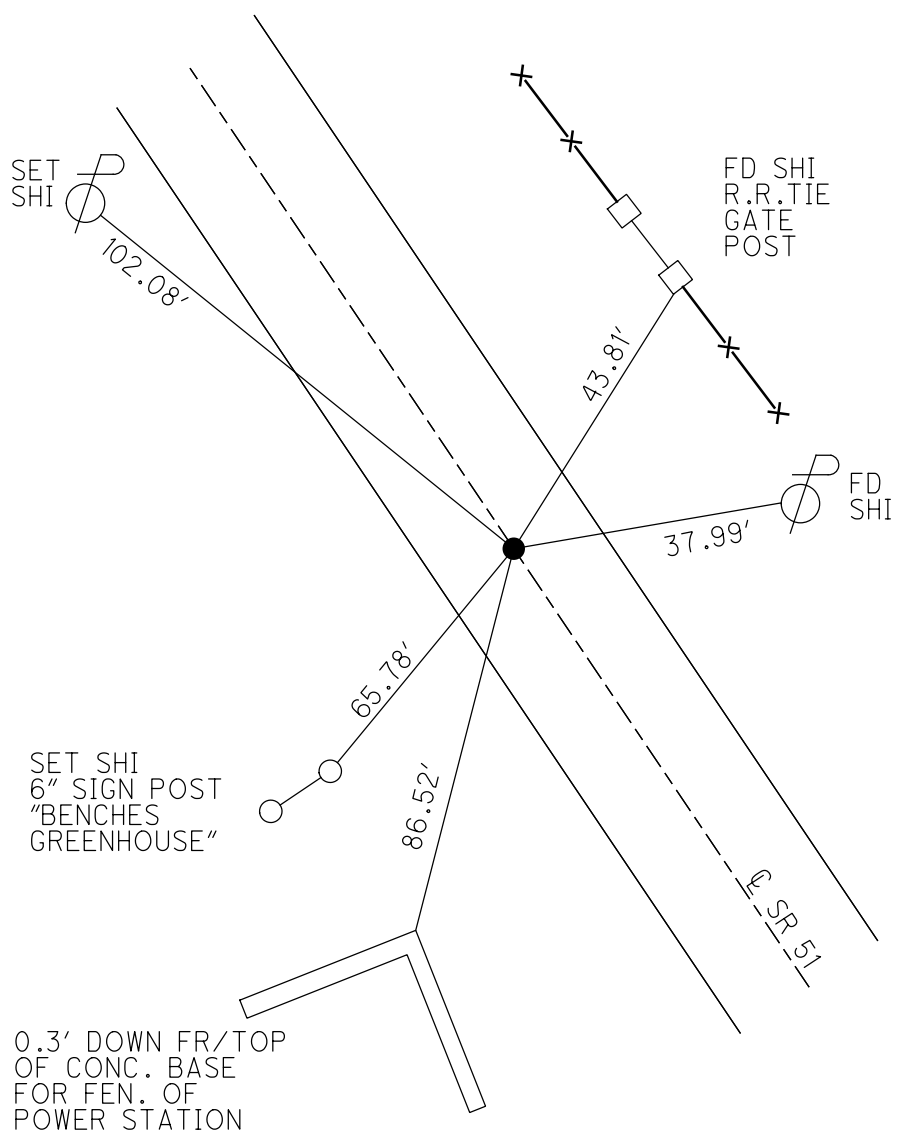
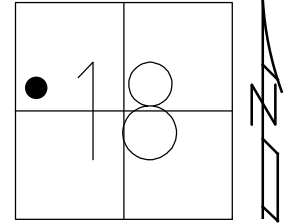


O.D.O.T. DISTRICT 2 SURVEY OFFICE (USE ONLY)

PERSONNEL \_\_\_\_\_ REFERENCE NO. 7 SHEET 3 OF 18  
 NOTES BALBAUGH DATE 4/15/20 ROUTE SR 51  
 H.C. LEU WEATHER CLOUDY COUNTY OTTAWA  
 R.C. BALBAUGH TEMP. 39° TOWNSHIP HARRIS  
 SECTION 18  
 DWG BY NIESE PID 94324 T 6 N R 14 E

TYPE MONUMENT MAG/WASHER  
 ON SURFACE - ~~BELOW~~ ON  
 OFFSET ☉ PAVEMENT ON LT : RT  
11.7' TO RT EDGE PAVEMENT  
 STATION: 88+52.27

HORZ. DATUM: NAD83 2011 GEOID: NAVD88 2012A  
 GRID: NORTHING: 661677.346 EASTING: 1750005.696

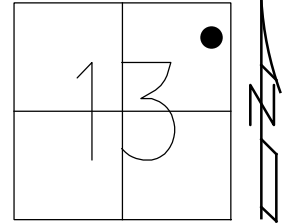


RECORD: P.I.  
 $\Delta = 00^{\circ}44'00''$  LT  
 P.K./WASHER  
 ATOP NAIL/SHI  
 FD P.K./WASHER  
 4/28/00, MB  
 SET P.K./WASHER  
 6/28/00, SAH  
 FD P.K./WASHER  
 REF7  
 4/29/15, JLL  
 SET MAG/WASHER  
 10/13/20, DSA

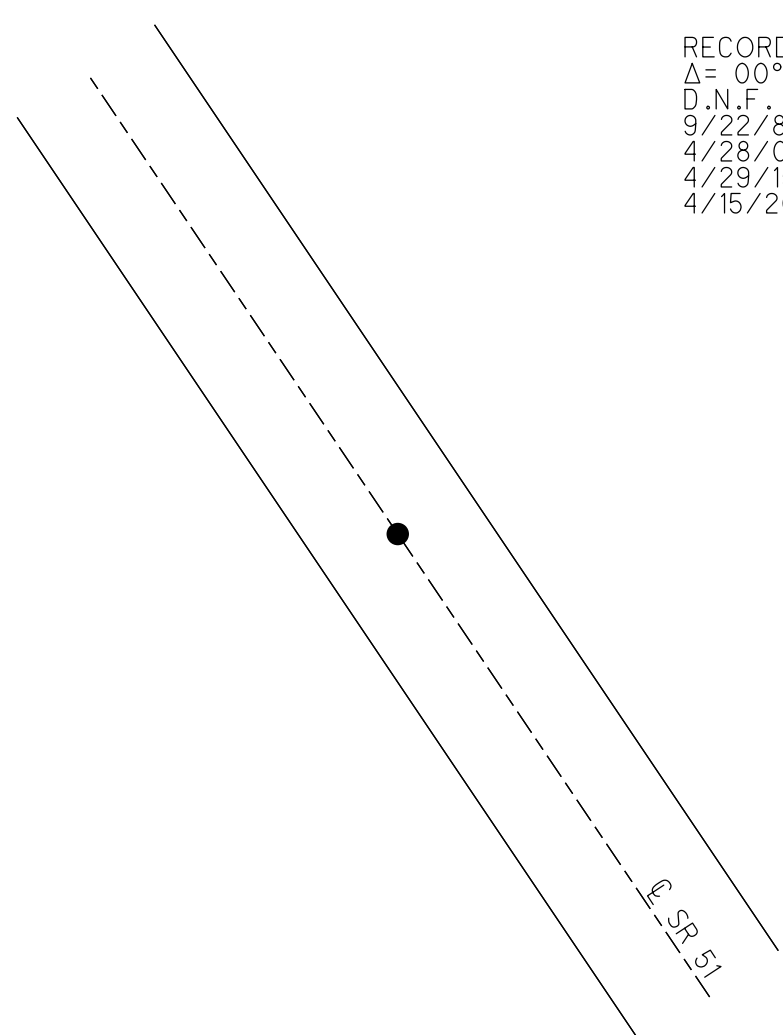
O.D.O.T. DISTRICT 2 SURVEY OFFICE (USE ONLY)

PERSONNEL \_\_\_\_\_ REFERENCE NO. 8 SHEET 4 OF 18  
NOTES BALBAUGH DATE 4/15/20 ROUTE SR 51  
H.C. LEU WEATHER CLOUDY COUNTY OTTAWA  
R.C. BALBAUGH TEMP. 39° TOWNSHIP HARRIS  
SECTION 13  
DWG BY NIESE PID 94324 T 6 N R 14 E

TYPE MONUMENT D.N.F.  
ON SURFACE - BELOW -  
OFFSET  $\odot$  PAVEMENT - LT : RT  
- TO - EDGE PAVEMENT  
STATION: 105+40.08



HORIZ.DATUM: NAD83 2011 GEOID: NAVD88 2012A  
GRID: NORTHING: \_\_\_\_\_ EASTING: \_\_\_\_\_



RECORD: P.I.  
 $\Delta = 00^\circ 25' 00''$  LT  
D.N.F.  
9/22/87  
4/28/00  
4/29/15, JLL  
4/15/20, JLL

O.D.O.T. DISTRICT 2 SURVEY OFFICE (USE ONLY)

PERSONNEL

REFERENCE NO. 9

SHEET 5 OF 18

NOTES BALBAUGH

DATE 4/15/20

ROUTE SR 51

H.C. LEU

WEATHER CLOUDY

COUNTY OTTAWA

R.C. BALBAUGH

TEMP. 39°

TOWNSHIP HARRIS

SECTION 13

DWG BY NIESE

PID 94324

T 6 N R 13 E

TYPE MONUMENT P.K. NAIL

ON SURFACE - ~~BELOW~~ ON

OFFSET 12.2' TO RT PAVEMENT 0.4' LT : ~~RT~~

12.2' TO RT EDGE PAVEMENT

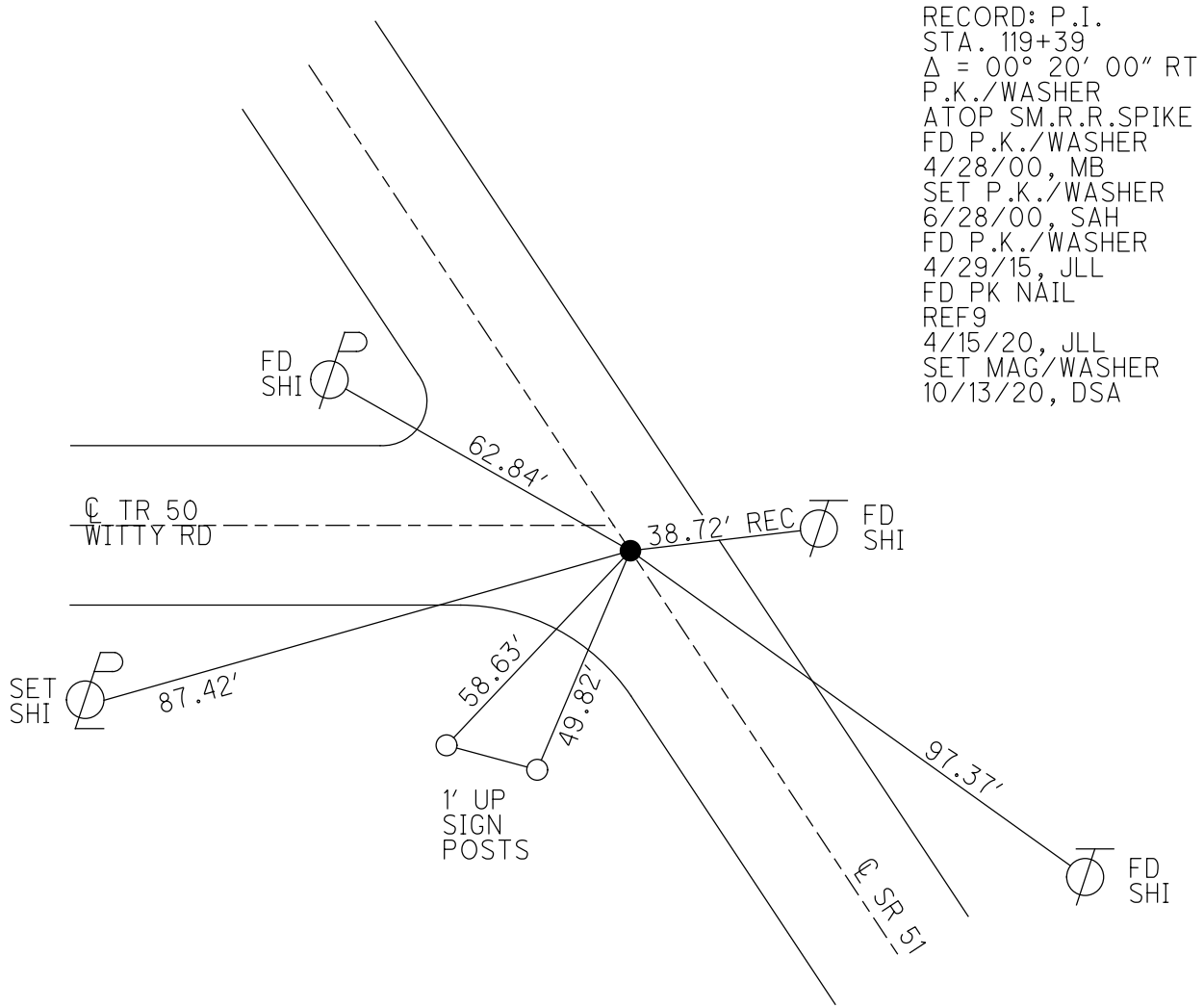
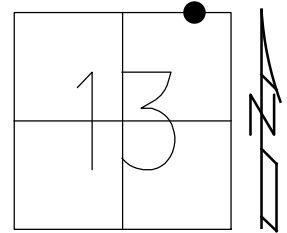
STATION: 118+89.18

HORZ.DATUM: NAD83 2011

GEOID: NAVD88 2012A

GRID: NORTHING: 664227.554

EASTING: 1748356.670



RECORD: P.I.  
 STA. 119+39  
 $\Delta = 00^\circ 20' 00''$  RT  
 P.K./WASHER  
 ATOP SM.R.R.SPIKE  
 FD P.K./WASHER  
 4/28/00, MB  
 SET P.K./WASHER  
 6/28/00, SAH  
 FD P.K./WASHER  
 4/29/15, JLL  
 FD PK NAIL  
 REF9  
 4/15/20, JLL  
 SET MAG/WASHER  
 10/13/20, DSA

O.D.O.T. DISTRICT 2 SURVEY OFFICE (USE ONLY)

PERSONNEL \_\_\_\_\_ REFERENCE NO. 10 SHEET 6 OF 18  
NOTES BALBAUGH DATE 4/15/20 ROUTE SR 51  
H.C. LEU WEATHER CLOUDY COUNTY OTTAWA  
R.C. BALBAUGH TEMP. 41° TOWNSHIP CLAY  
SECTION 12  
DWG BY AUBLE PID 94324 T 6 N R 13 E

TYPE MONUMENT P.K.SHANK

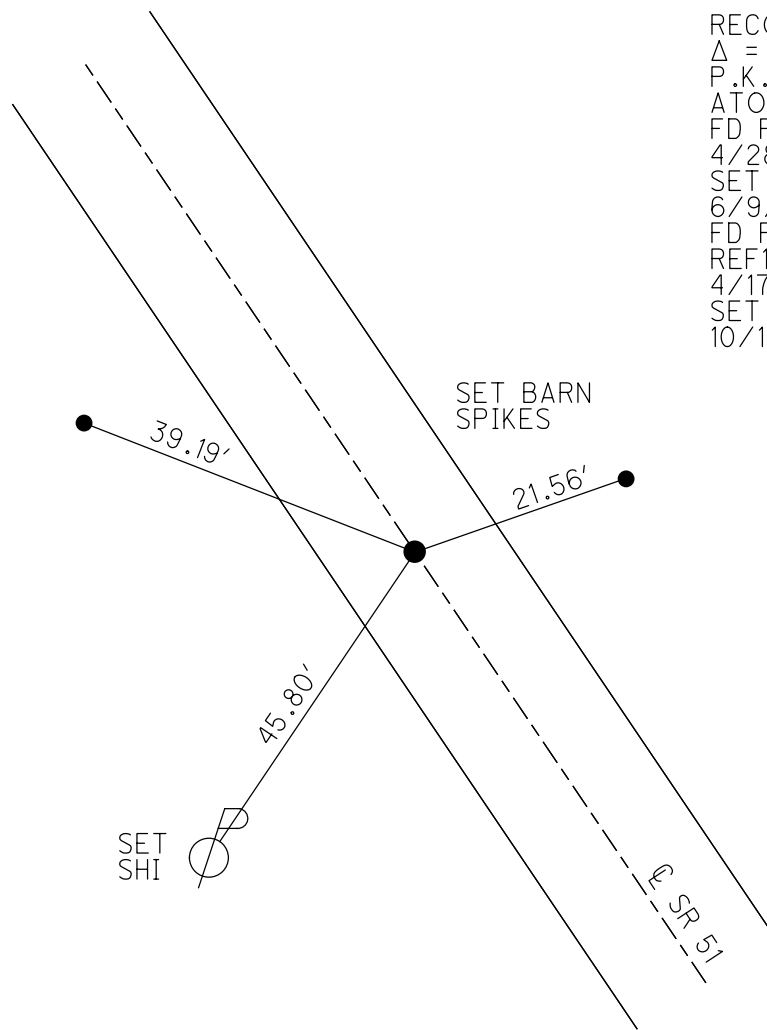
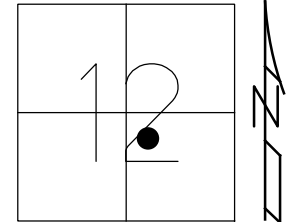
~~ON SURFACE~~ - BELOW 1.5"

OFFSET ☉ PAVEMENT ON LT : RT  
11.3' TO RT EDGE PAVEMENT

STATION: 138+58.81

HORIZ.DATUM: NAD83 2011 GEOID: NAVD88 2012A

GRID: NORTHING: 665883.490 EASTING: 1747290.214



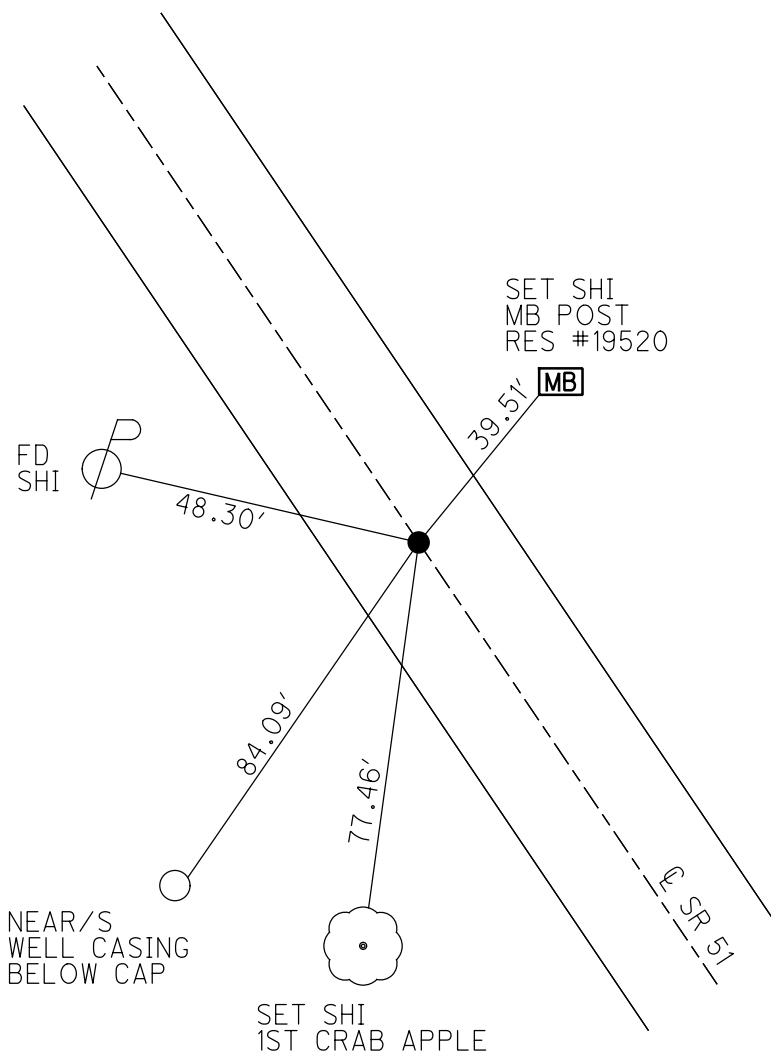
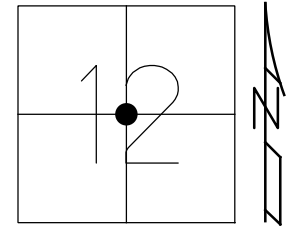
RECORD: P.I.  
 $\Delta = 00^{\circ} 53' 00''$  LT  
P.K./WASHER  
ATOP SM.R.R.SPIKE  
FD P.K./WASHER  
4/28/00, MB  
SET P.K./WASHER  
6/9/00, SAH  
FD P.K./WASHER  
REF10  
4/17/15, JFO  
SET MAG/WASHER  
10/13/20, JFO

O.D.O.T. DISTRICT 2 SURVEY OFFICE (USE ONLY)

PERSONNEL \_\_\_\_\_ REFERENCE NO. 11 SHEET 7 OF 18  
 NOTES BALBAUGH DATE 4/15/20 ROUTE SR 51  
 H.C. LEU WEATHER CLOUDY COUNTY OTTAWA  
 R.C. BALBAUGH TEMP. 41° TOWNSHIP CLAY  
 DWG BY NIESE PID 94324 SECTION 12  
 T 6 N R 13 E

TYPE MONUMENT P.K.NAIL  
 ON SURFACE - ~~BELOW~~ ON  
 OFFSET  $\text{C}$  PAVEMENT 0.8' LT : RT  
11.2' TO RT EDGE PAVEMENT  
 STATION: 151+58.55

HORIZ.DATUM: NAD83 2011 GEOID: NAVD88 2012A  
 GRID: NORTHING: 666965.392 EASTING: 1746569.970

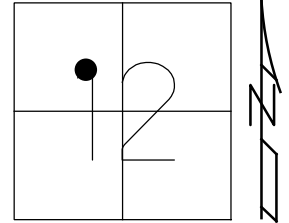


RECORD: P.I.  
 $\Delta = 01^{\circ} 10' 00''$  LT  
 P.K./WASHER  
 ATOP SM.R.R.SPIKE  
 FD P.K./WASHER  
 4/28/00, MB  
 SET P.K./WASHER  
 6/28/00, SAH  
 FD P.K.NAIL  
 4/17/15, JFO  
 SET MAG/WASHER  
 NEWREF11  
 10/13/20, JFO

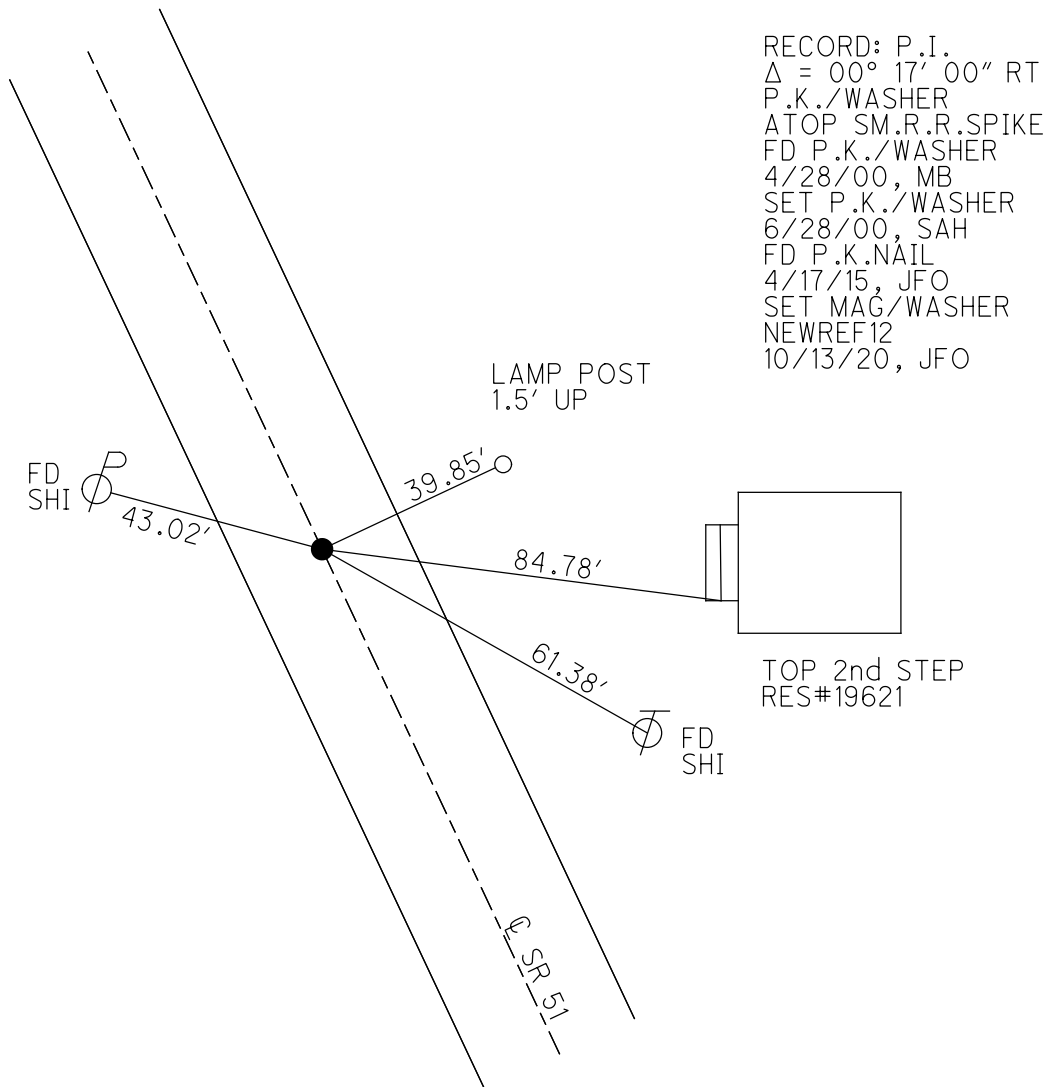
O.D.O.T. DISTRICT 2 SURVEY OFFICE (USE ONLY)

PERSONNEL	REFERENCE NO. <u>12</u>	SHEET <u>8</u> OF <u>18</u>
NOTES <u>BALBAUGH</u>	DATE <u>4/16/20</u>	ROUTE <u>SR 51</u>
H.C. <u>LEU</u>	WEATHER <u>CLOUDY</u>	COUNTY <u>OTTAWA</u>
R.C. <u>BALBAUGH</u>	TEMP. <u>30°</u>	TOWNSHIP <u>CLAY</u>
		SECTION <u>12</u>
DWG BY <u>NIESE</u>	PID <u>94324</u>	T <u>6</u> N R <u>13</u> E

TYPE MONUMENT P.K./WASHER  
~~ON SURFACE~~ - BELOW 3"  
 OFFSET Q PAVEMENT 0.4' LT : ~~RT~~  
12.1' TO RT EDGE PAVEMENT  
 STATION: 161+58.26



HORZ.DATUM: NAD83 2011 GEOID: NAVD88 2012A  
 GRID: NORTHING: 667786.522 EASTING: 1745999.176

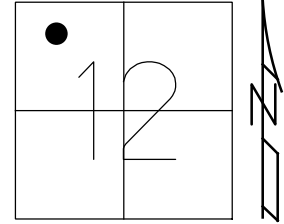


RECORD: P.I.  
 $\Delta = 00^{\circ} 17' 00''$  RT  
 P.K./WASHER  
 ATOP SM.R.R.SPIKE  
 FD P.K./WASHER  
 4/28/00, MB  
 SET P.K./WASHER  
 6/28/00, SAH  
 FD P.K.NAIL  
 4/17/15, JFO  
 SET MAG/WASHER  
 NEWREF12  
 10/13/20, JFO

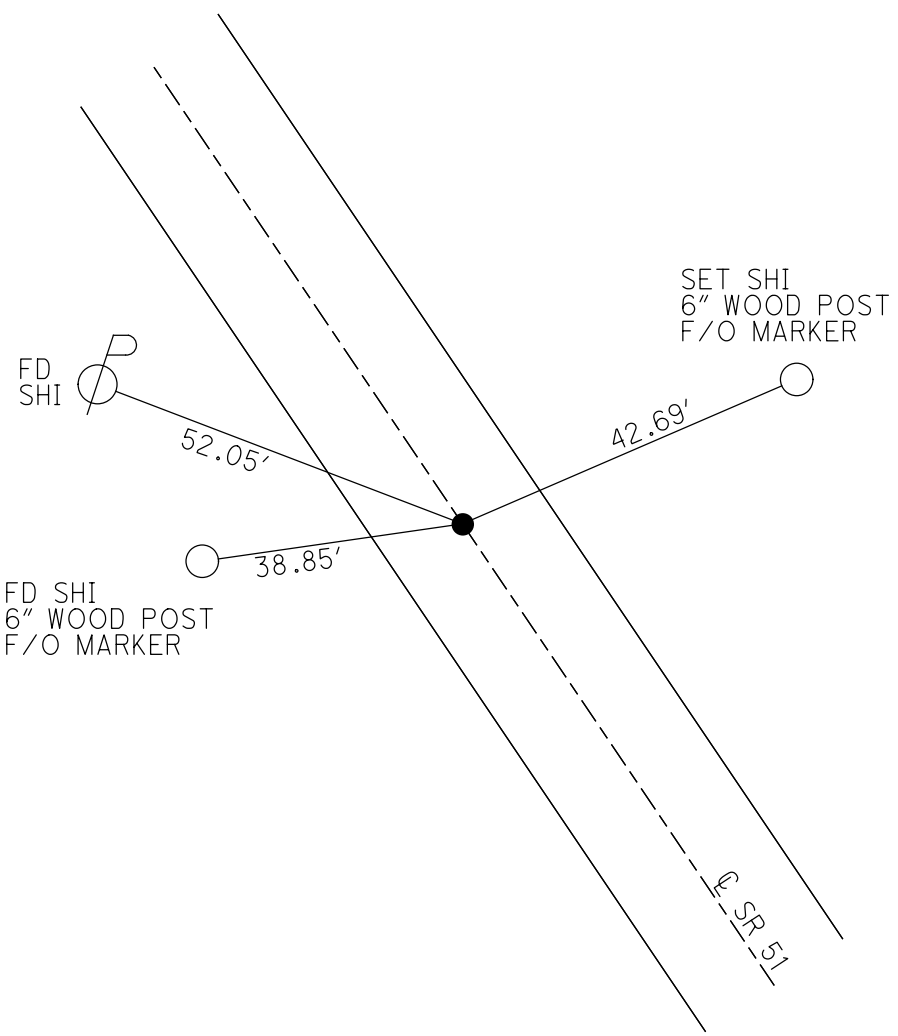
O.D.O.T. DISTRICT 2 SURVEY OFFICE (USE ONLY)

PERSONNEL \_\_\_\_\_ REFERENCE NO. 13 SHEET 9 OF 18  
 NOTES BALBAUGH DATE 4/16/20 ROUTE SR 51  
 H.C. LEU WEATHER SUNNY COUNTY OTTAWA  
 R.C. BALBAUGH TEMP. 30° TOWNSHIP CLAY  
 DWG BY NIесе PID 94324 SECTION 12  
 T 6 N R 13 E

TYPE MONUMENT P.K.NAIL  
 ON SURFACE - ~~BELOW~~ ON  
 OFFSET ☐ PAVEMENT ON LT : RT  
12.2' TO RT EDGE PAVEMENT  
 STATION: 171+46.04



HORIZ.DATUM: NAD83 2011 GEOID: NAVD88 2012A  
 GRID: NORTHING: 668599.601 EASTING: 1745438.905



RECORD: P.I.  
 $\Delta = 00^\circ 22' 00''$  RT  
 P.K./WASHER  
 ATOP SM.R.R.SPIKE  
 FD P.K./WASHER  
 4/28/00, MB  
 SET P.K./WASHER  
 6/28/00, SAH  
 FD P.K./WASHER  
 4/17/15, JFO  
 SET MAG/WASHER  
 NEWREF13  
 10/13/20, JFO



O.D.O.T. DISTRICT 2 SURVEY OFFICE (USE ONLY)

PERSONNEL

REFERENCE NO. 14

SHEET 10 OF 18

NOTES BALBAUGH

DATE 4/16/20

ROUTE SR 51

H.C. LEU

WEATHER SUNNY

COUNTY OTTAWA

R.C. BALBAUGH

TEMP. 30°

TOWNSHIP CLAY

SECTION 12

DWG BY NIESE PID 94324

T 6 N R 13 E

TYPE MONUMENT P.K.NAIL

ON SURFACE - ~~BELOW~~ ON

OFFSET Q PAVEMENT ON LT : RT  
- TO - EDGE PAVEMENT

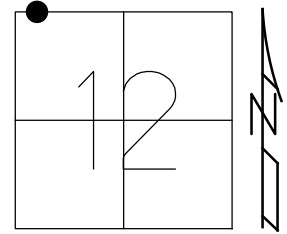
STATION: 182+50.46

HORZ.DATUM: NAD83 2011

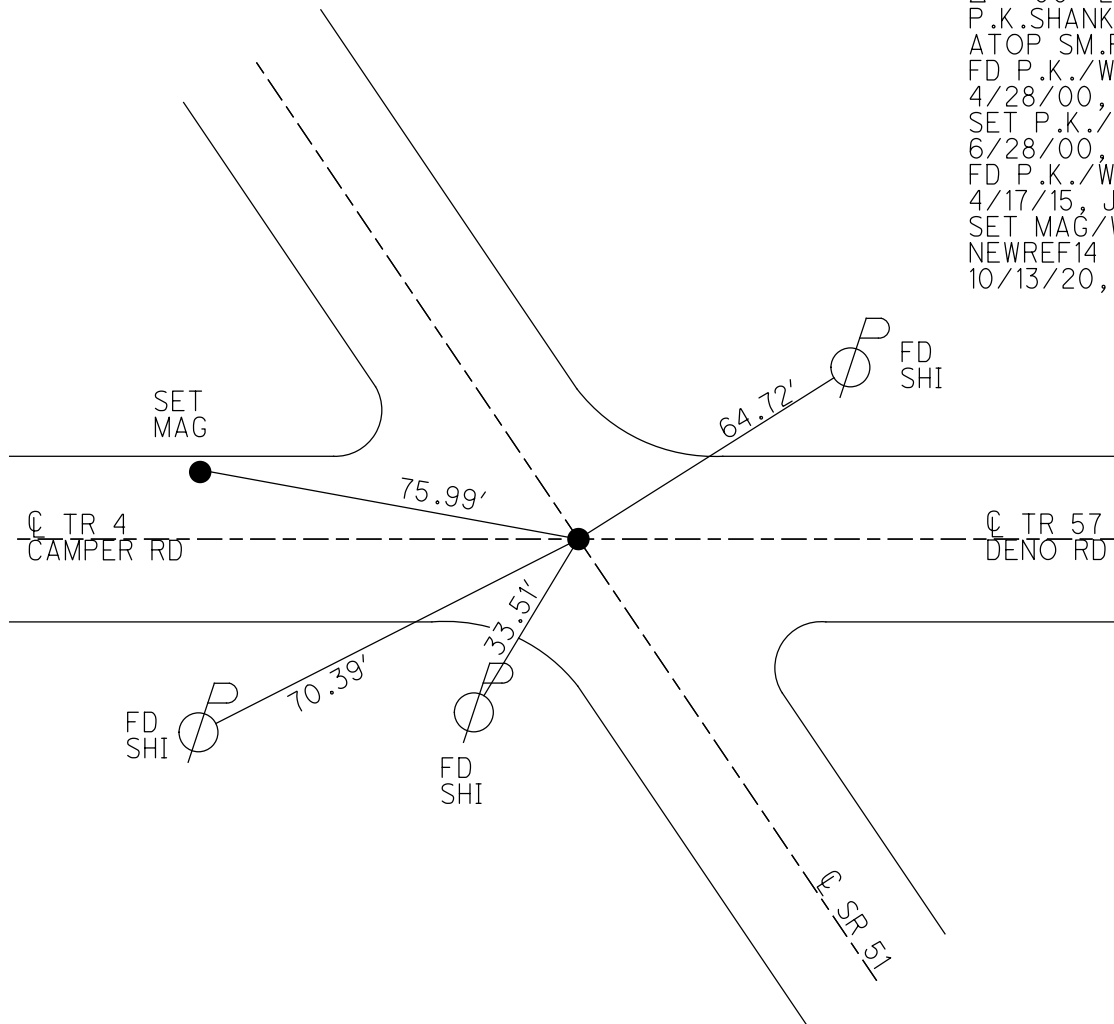
GEOID: NAVD88 2012A

GRID: NORTHING: 669513.234

EASTING: 1744818.437



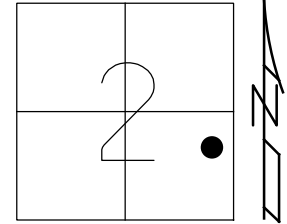
RECORD: P.I.  
 $\Delta = 00^{\circ} 29' 00''$  RT  
 P.K.SHANK  
 ATOP SM.R.R.SPIKE  
 FD P.K./WASHER  
 4/28/00, MB  
 SET P.K./WASHER  
 6/28/00, SAH  
 FD P.K./WASHER  
 4/17/15, JFO  
 SET MAG/WASHER  
 NEWREF14  
 10/13/20, JFO



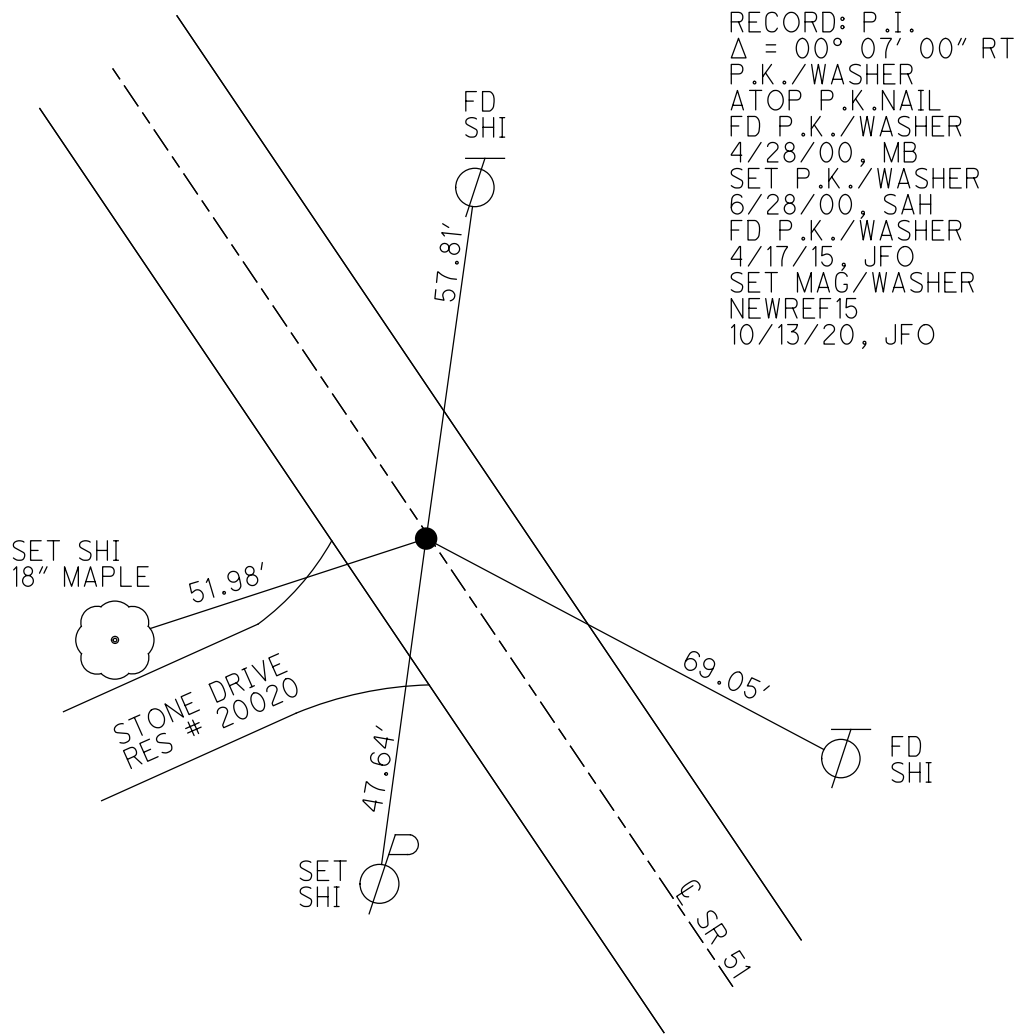
O.D.O.T. DISTRICT 2 SURVEY OFFICE (USE ONLY)

PERSONNEL \_\_\_\_\_ REFERENCE NO. 15 SHEET 11 OF 18  
 NOTES BALBAUGH DATE 4/16/20 ROUTE SR 51  
 H.C. LEU WEATHER SUNNY COUNTY OTTAWA  
 R.C. BALBAUGH TEMP. 35° TOWNSHIP CLAY  
 DWG BY NIESE PID 94324 SECTION 2  
 T 6 N R 13 E

TYPE MONUMENT P.K./WASHER  
 ON SURFACE - ~~BELOW~~ ON  
 OFFSET 12.2' TO RT EDGE PAVEMENT  
 STATION: 199+30.67



HORIZ.DATUM: NAD83 2011 GEOID: NAVD88 2012A  
 GRID: NORTHING: 670911.233 EASTING: 1743886.159



RECORD: P.I.  
 $\Delta = 00^\circ 07' 00''$  RT  
 P.K./WASHER  
 ATOP P.K.NAIL  
 FD P.K./WASHER  
 4/28/00, MB  
 SET P.K./WASHER  
 6/28/00, SAH  
 FD P.K./WASHER  
 4/17/15, JFO  
 SET MAG/WASHER  
 NEWREF15  
 10/13/20, JFO

O.D.O.T. DISTRICT 2 SURVEY OFFICE (USE ONLY)

PERSONNEL

REFERENCE NO. 16

SHEET 12 OF 18

NOTES BALBAUGH

DATE 4/16/20

ROUTE SR 51

H.C. LEU

WEATHER SUNNY

COUNTY OTTAWA

R.C. BALBAUGH

TEMP. 35°

TOWNSHIP CLAY

SECTION 2

DWG BY NIESE PID 94324

T 6 N R 13 E

TYPE MONUMENT 1" IPIN

~~ON SURFACE~~ - BELOW 3.5"

OFFSET 20.6' ~~LT~~ : RT

8.3' TO RT ~~EDGE PAVEMENT~~ OF EB

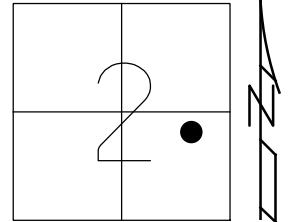
STATION: 207+23.06

HORZ.DATUM: NAD83 2011

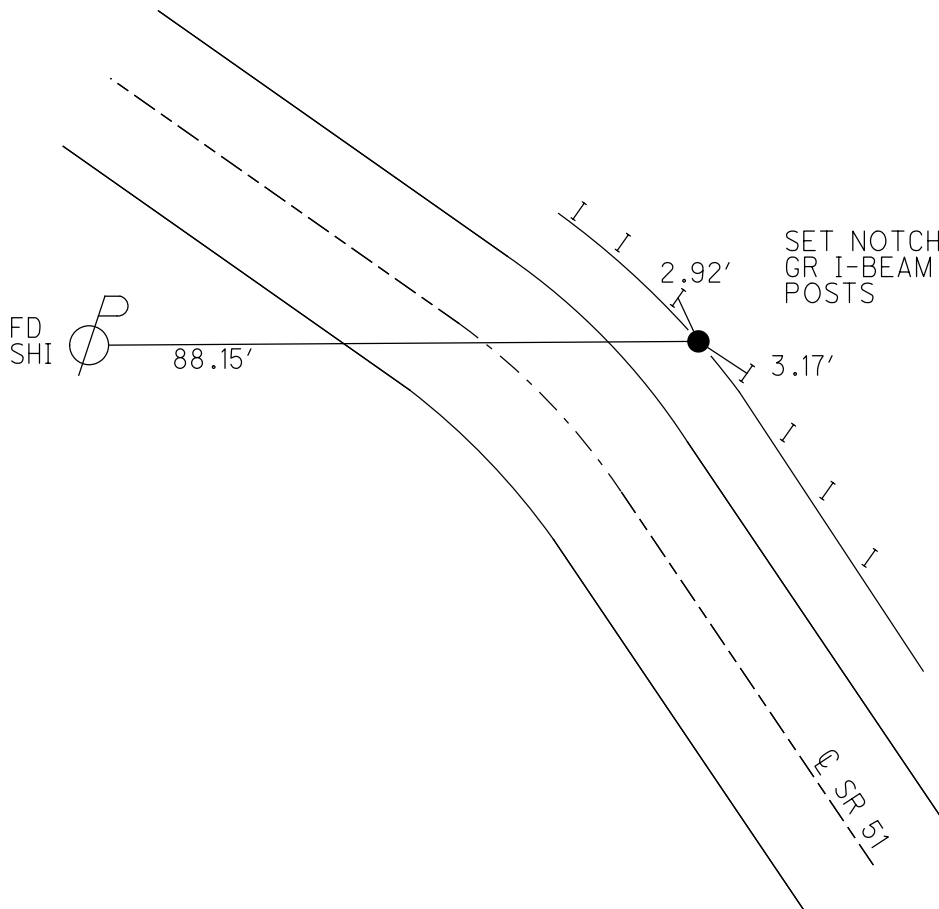
GEOID: NAVD88 2012A

GRID: NORTHING: 671578.956

EASTING: 1743443.155



RECORD: P.I.  
 $\Delta = 20^\circ 36' 00''$  LT  
 FD IPIN  
 4/28/00, MB  
 6/28/00, SAH  
 FD 1" IPIN  
 REF16  
 4/17/15, JFO



O.D.O.T. DISTRICT 2 SURVEY OFFICE (USE ONLY)

PERSONNEL

REFERENCE NO. 17

SHEET 13 OF 18

NOTES BALBAUGH

DATE 4/16/20

ROUTE SR 51

H.C. LEU

WEATHER SUNNY

COUNTY OTTAWA

R.C. BALBAUGH

TEMP. 35°

TOWNSHIP CLAY

DWG BY NIESE PID 94324

SECTION 2

T 6 N R 13 E

TYPE MONUMENT P.K./WASHER

~~ON SURFACE~~ - BELOW 1.5"

OFFSET  $\phi$  PAVEMENT ON LT : RT

- TO - EDGE PAVEMENT

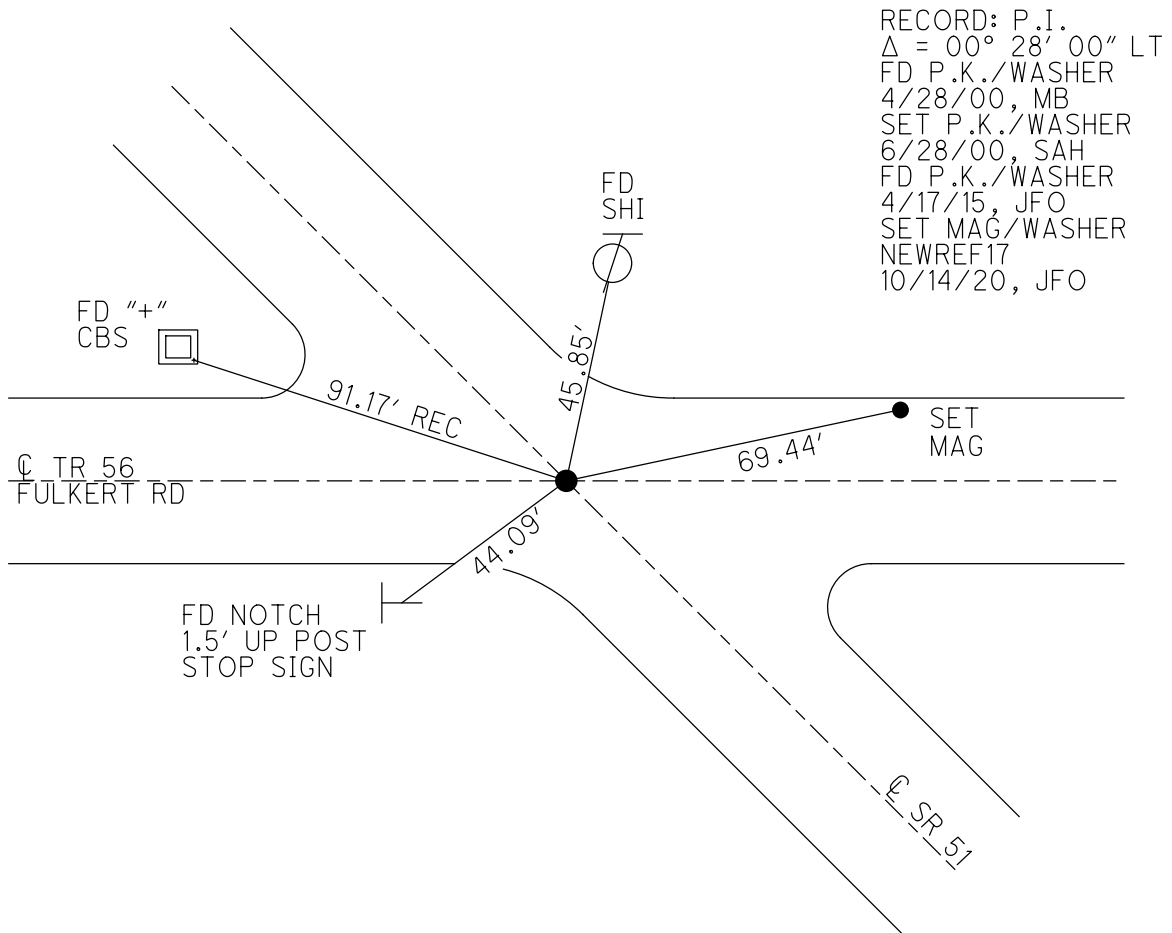
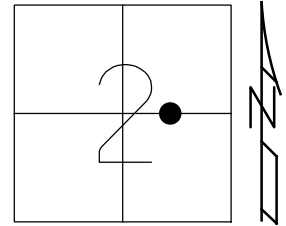
STATION: 217+05.90

HORZ. DATUM: NAD83 2011

GEOID: NAVD88 2012A

GRID: NORTHING: 672149.014

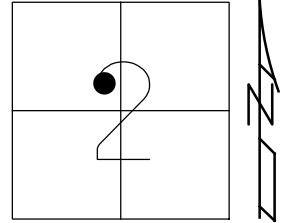
EASTING: 1742653.552



O.D.O.T. DISTRICT 2 SURVEY OFFICE (USE ONLY)

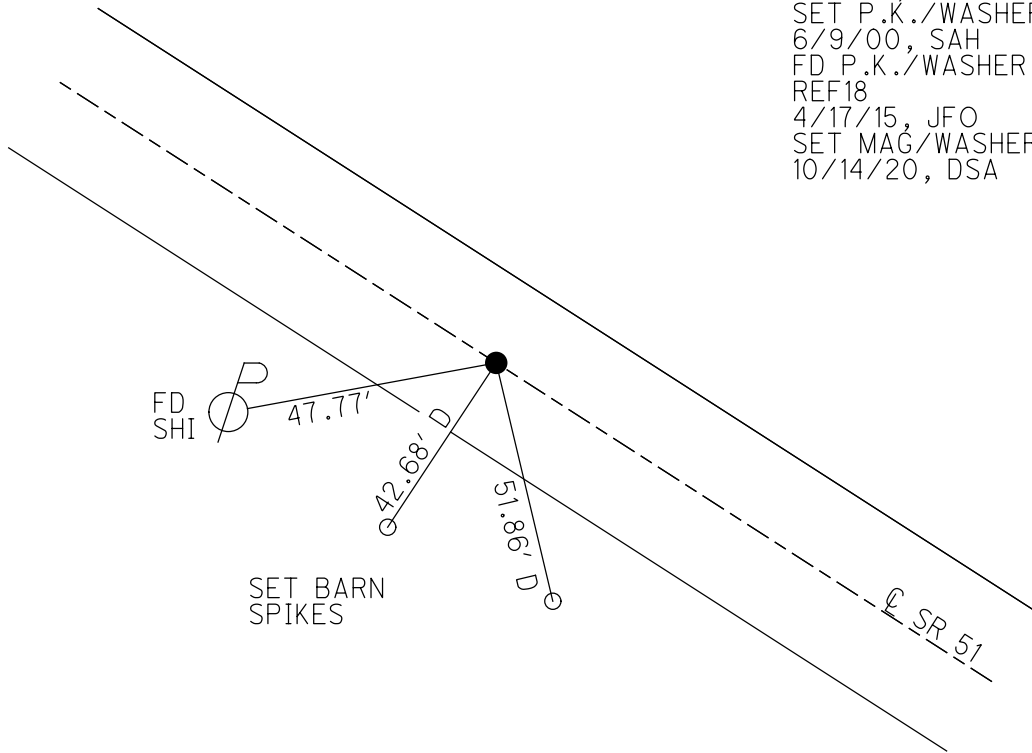
PERSONNEL \_\_\_\_\_ REFERENCE NO. 18 SHEET 14 OF 18  
 NOTES BALBAUGH DATE 4/16/20 ROUTE SR 51  
 H.C. LEU WEATHER PARTLY CLOUDY COUNTY OTTAWA  
 R.C. BALBAUGH TEMP. 39° TOWNSHIP CLAY  
 DWG BY NIESE PID 94324 SECTION 2  
 T 6 N R 13 E

TYPE MONUMENT P.K.NAIL  
 ON SURFACE - ~~BELOW~~ ON  
 OFFSET 0.7' LT : ~~RT~~  
12.5' TO LT EDGE PAVEMENT  
 STATION: 224+55.80



HORIZ.DATUM: NAD83 2011 GEOID: NAVD88 2012A  
 GRID: NORTHING: 672583.254 EASTING: 1742042.188

RECORD: P.I.  
 $\Delta = 00^\circ 52' 00''$  RT  
 P.K./WASHER  
 ATOP SM.R.R.SPIKE  
 FD P.K./WASHER  
 5/1/00, MB  
 SET P.K./WASHER  
 6/9/00, SAH  
 FD P.K./WASHER  
 REF18  
 4/17/15, JFO  
 SET MAG/WASHER  
 10/14/20, DSA



O.D.O.T. DISTRICT 2 SURVEY OFFICE (USE ONLY)

PERSONNEL \_\_\_\_\_

REFERENCE NO. 19

SHEET 15 OF 18

NOTES BALBAUGH

DATE 4/16/20

ROUTE SR 51

H.C. LEU

WEATHER WINDY

COUNTY OTTAWA

R.C. BALBAUGH

TEMP. 40°

TOWNSHIP CLAY

DWG BY NIESE PID 94324

SECTION 2

T 6 N R 13 E

TYPE MONUMENT MAG NAIL

ON SURFACE - ~~BELOW~~ ON

OFFSET CL PAVEMENT 0.8' LT : ~~RT~~

12.5' TO LT EDGE PAVEMENT

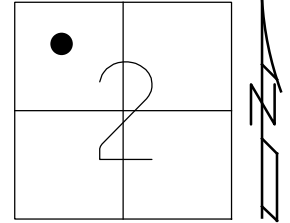
STATION: 232+05.52

HORIZ.DATUM: NAD83 2011

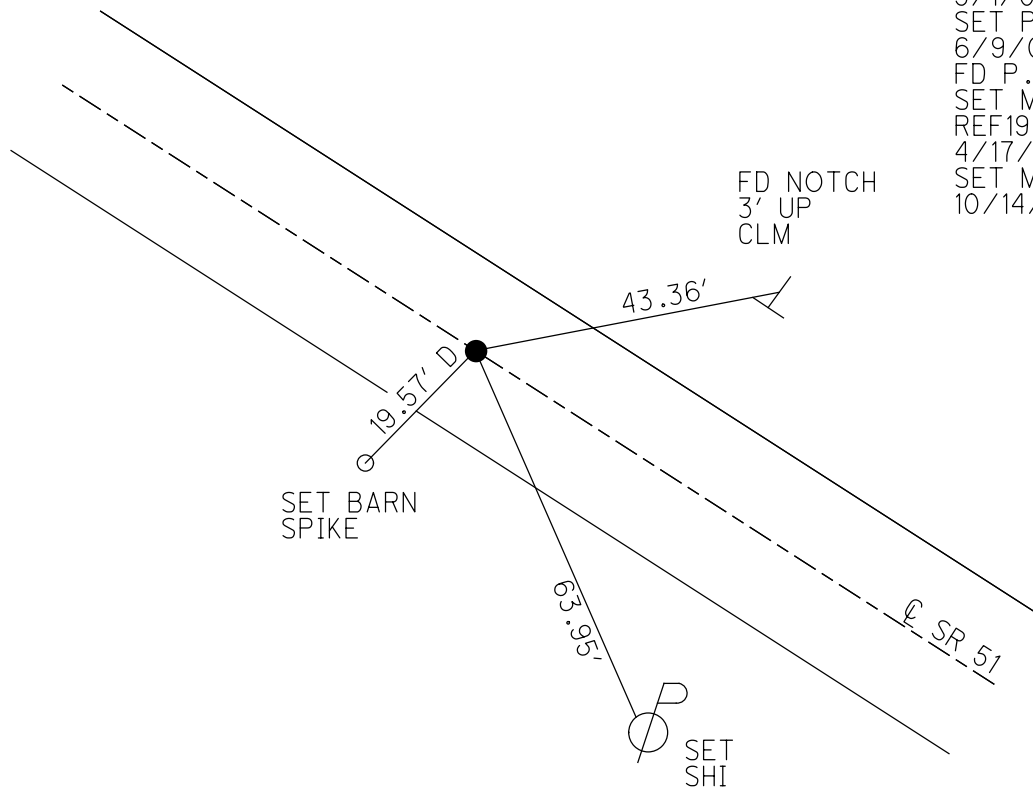
GEOID: NAVD88 2012A

GRID: NORTHING: 673026.658

EASTING: 1741437.668



RECORD: P.I.  
 $\Delta = 00^{\circ} 30' 00''$  RT  
 FD P.K./WASHER  
 ATOP SM.R.R.SPIKE  
 FD P.K./WASHER  
 5/1/00, MB  
 SET P.K./WASHER  
 6/9/00, SAH  
 FD P.K.SHANK  
 SET MAG/WASHER  
 REF19  
 4/17/15, JFO  
 SET MAG/WASHER  
 10/14/20, DSA



O.D.O.T. DISTRICT 2 SURVEY OFFICE (USE ONLY)

PERSONNEL \_\_\_\_\_ REFERENCE NO. 20 SHEET 16 OF 18  
 NOTES BALBAUGH DATE 4/16/20 ROUTE SR 51  
 H.C. LEU WEATHER WINDY COUNTY OTTAWA  
 R.C. BALBAUGH TEMP. 40° TOWNSHIP CLAY  
 SECTION 2  
 DWG BY NIESE PID 94324 T 6 N R 13 E

TYPE MONUMENT D.N.F. P.K.NAIL

~~ON SURFACE~~ - BELOW \_\_\_\_\_

OFFSET  $\phi$  PAVEMENT 4.0' LT : ~~RT~~

~~\_\_\_\_\_~~ TO ~~\_\_\_\_\_~~ EDGE PAVEMENT

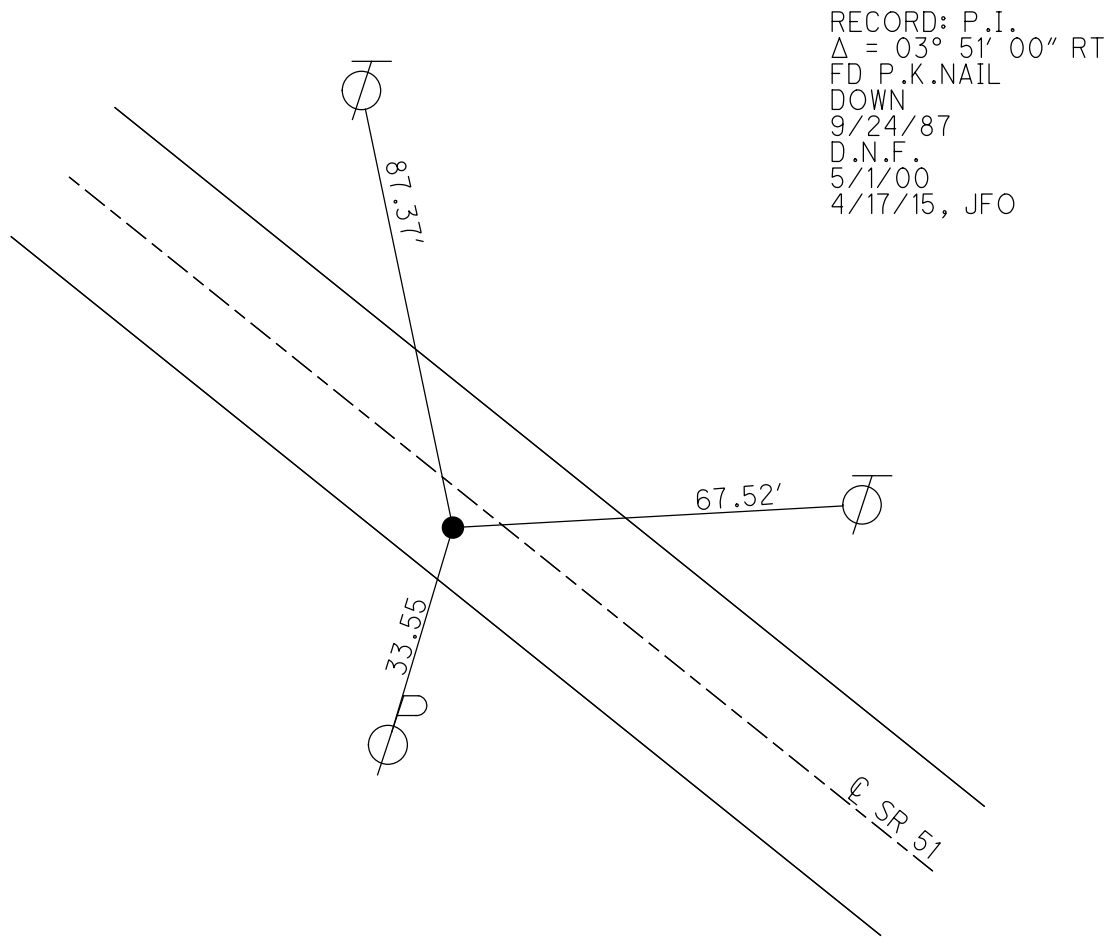
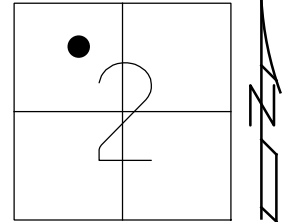
STATION: \_\_\_\_\_

HORIZ.DATUM: NAD83 2011

GEOID: NAVD88 2012A

GRID: NORTHING: \_\_\_\_\_

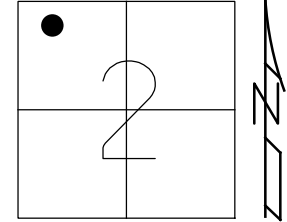
EASTING: \_\_\_\_\_



O.D.O.T. DISTRICT 2 SURVEY OFFICE (USE ONLY)

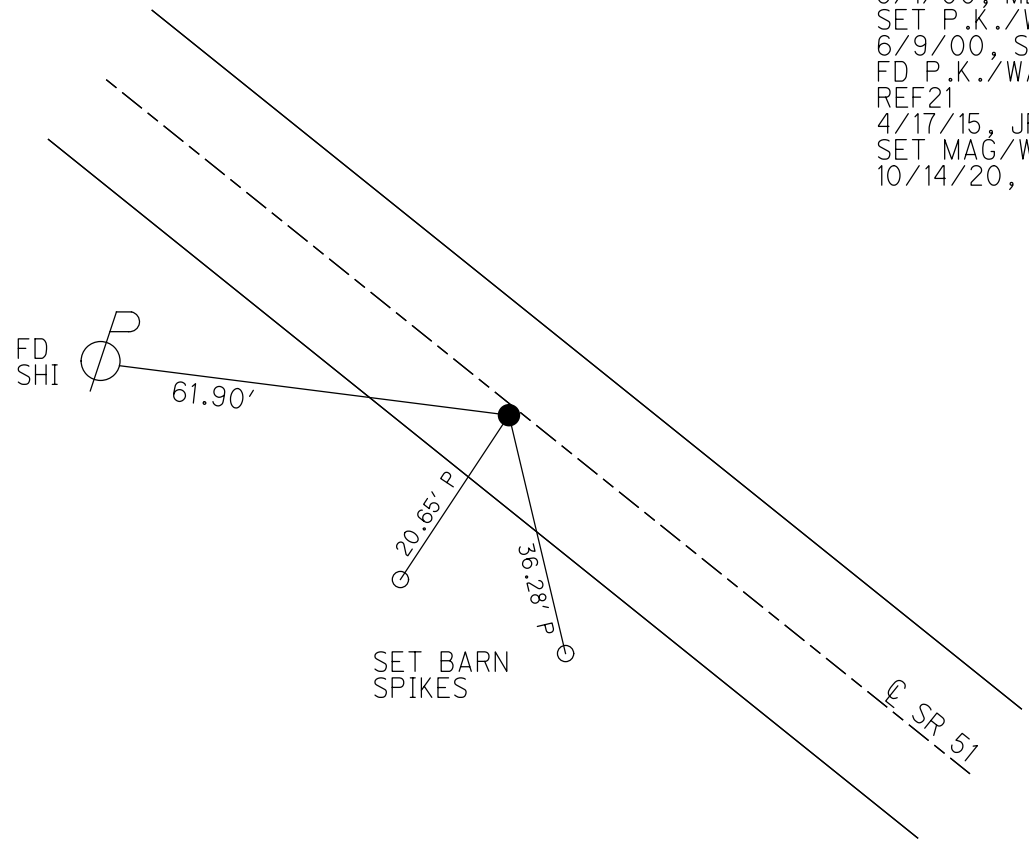
PERSONNEL \_\_\_\_\_ REFERENCE NO. 21 SHEET 17 OF 18  
 NOTES BALBAUGH DATE 4/16/00 ROUTE SR 51  
 H.C. LEU WEATHER WINDY COUNTY OTTAWA  
 R.C. BALBAUGH TEMP. 40° TOWNSHIP CLAY  
 DWG BY NIESE PID 94324 SECTION 2  
 T 6 N R 13 E

TYPE MONUMENT P.K./WASHER  
 ON SURFACE - ~~BELOW~~ ON  
 OFFSET Q PAVEMENT 1.1' LT : ~~RT~~  
12.1' TO LT EDGE PAVEMENT  
 STATION: 247+54.63



HORZ.DATUM: NAD83 2011 GEOID: NAVD88 2012A  
 GRID: NORTHING: 673975.292 EASTING: 1740212.947

RECORD: P.I.  
 $\Delta = 02^\circ 30' 00''$  RT  
 FD P.K./WASHER  
 ATOP SM.R.R.SPIKE  
 FD P.K./WASHER  
 5/1/00, MB  
 SET P.K./WASHER  
 6/9/00, SAH  
 FD P.K./WASHER  
 REF21  
 4/17/15, JFO  
 SET MAG/WASHER  
 10/14/20, DSA



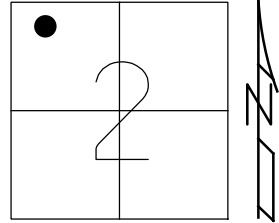


O.D.O.T. DISTRICT 2 SURVEY OFFICE (USE ONLY)

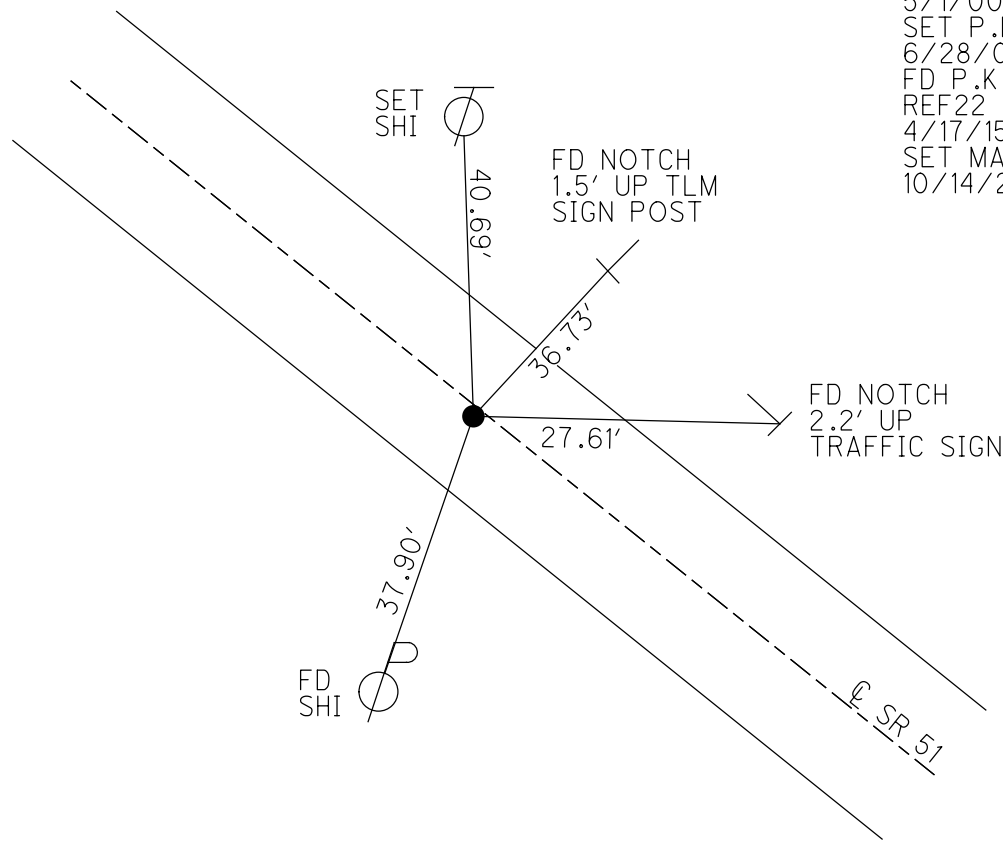
PERSONNEL \_\_\_\_\_ REFERENCE NO. 22 SHEET 18 OF 18  
 NOTES RHOADES DATE 10/14/20 ROUTE SR 51  
 H.C. AUBLE WEATHER CLOUDY COUNTY OTTAWA  
 R.C. O'DONNELL TEMP. 45° TOWNSHIP CLAY  
 SECTION 2  
 DWG BY NIESE PID 94324 T 6 N R 13 E

TYPE MONUMENT MAG/WASHER  
 ON SURFACE - BELOW ON  
 OFFSET  $\odot$  PAVEMENT 1.1' LT : RT  
11.7' TO LT EDGE PAVEMENT  
 STATION: 250+54.94

HORZ.DATUM: NAD83 2011 GEOID: NAVD88 2012A  
 GRID: NORTHING: 674180.664 EASTING: 1739993.782



RECORD: P.I.  
 $\Delta = 01^{\circ} 52' 00''$  RT  
 FD P.K./WASHER  
 ATOP SM.R.R.SPIKE  
 FD P.K./WASHER  
 5/1/00, MB  
 SET P.K./WASHER  
 6/28/00, SAH  
 FD P.K./WASHER  
 REF22  
 4/17/15, JFO  
 SET MAG/WASHER  
 10/14/20, DSA



O.D.O.T. DISTRICT 2 SURVEY OFFICE (USE ONLY)

PERSONNEL

REFERENCE NO. 23

SHEET 1 OF 21

NOTES BALBAUGH

DATE 4/16/20

ROUTE SR 51

H.C. LEU

WEATHER WINDY

COUNTY OTTAWA

R.C. BALBAUGH

TEMP. 40°

TOWNSHIP CLAY

SECTION 2

DWG BY NIESE PID 94324

T 6 N R 13 E

TYPE MONUMENT MAG/WASHER

ON SURFACE - ~~BELOW~~ ON

OFFSET Q PAVEMENT 0.5' LT : ~~RT~~

16.0' TO LT EDGE PAVEMENT

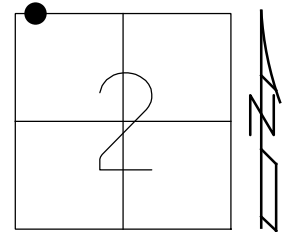
STATION: 258+54.18

HORZ.DATUM: NAD83 2011

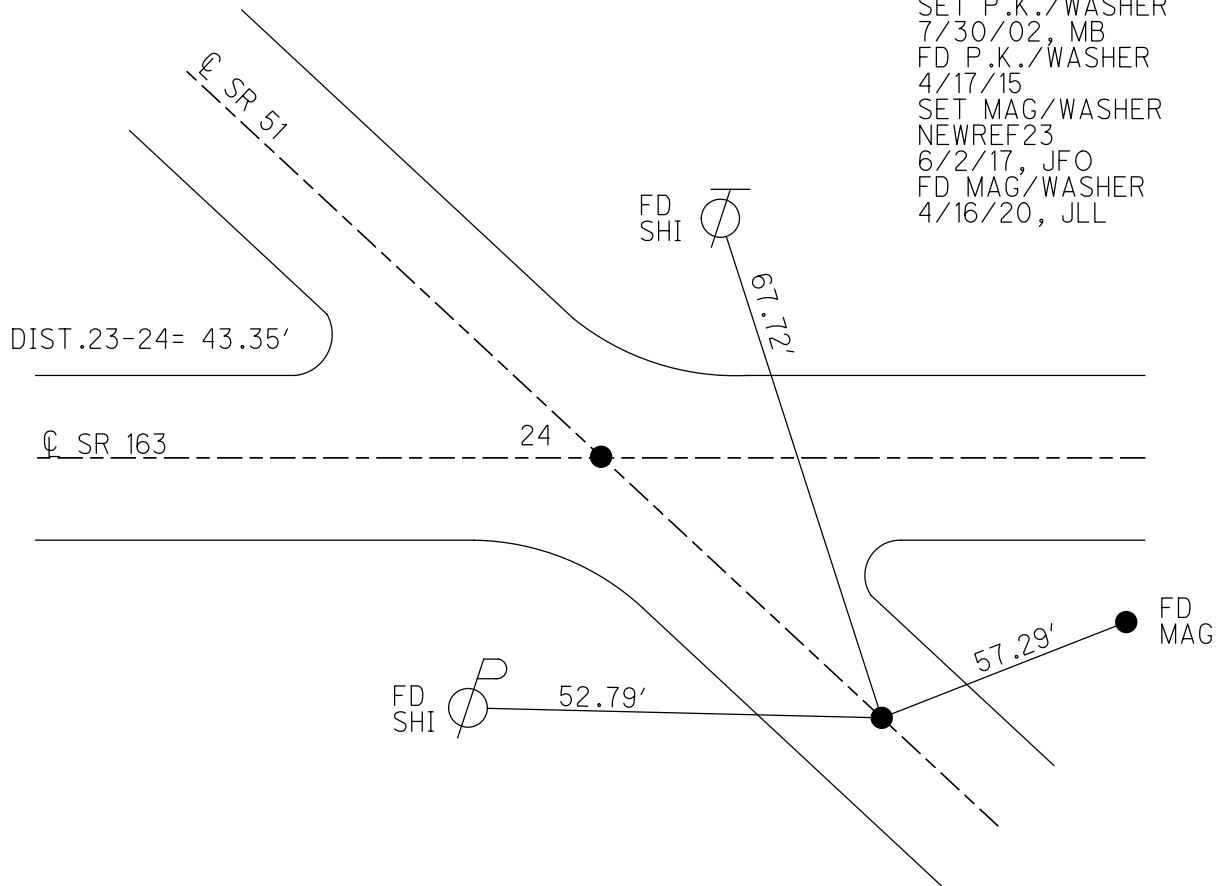
GEOID: NAVD88 2012A

GRID: NORTHING: 674745.891

EASTING: 1739428.748



RECORD: P.I.  
 $\Delta = 00^{\circ} 57' 00''$  LT  
 FD P.K./WASHER  
 FD SM.R.R.SPIKE  
 FD P.K./WASHER  
 5/1/00, MB  
 SET P.K./WASHER  
 7/30/02, MB  
 FD P.K./WASHER  
 4/17/15  
 SET MAG/WASHER  
 NEWREF23  
 6/2/17, JFO  
 FD MAG/WASHER  
 4/16/20, JLL

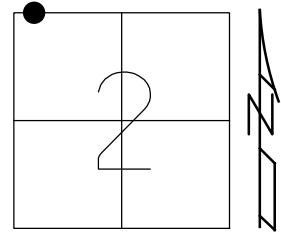


O.D.O.T. DISTRICT 2 SURVEY OFFICE (USE ONLY)

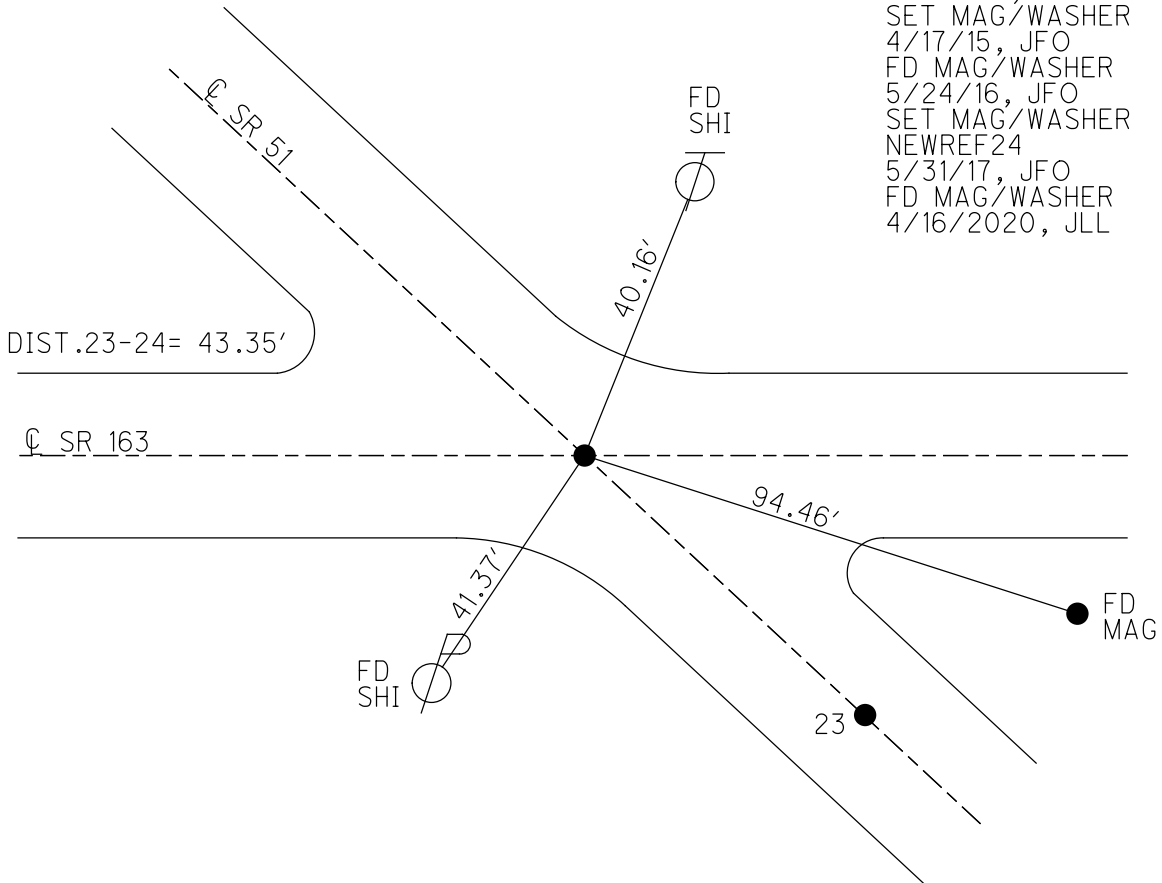
PERSONNEL \_\_\_\_\_ REFERENCE NO. 24 SHEET 2 OF 21  
 NOTES BALBAUGH DATE 4/16/20 ROUTE SR 51  
 H.C. LEU WEATHER WINDY COUNTY OTTAWA  
 R.C. BALBAUGH TEMP. 40° TOWNSHIP CLAY  
 DWG BY NIESE PID 94324 SECTION 2  
 T 6 N R 13 E

TYPE MONUMENT MAG/WASHER  
 ON SURFACE - ~~BELOW~~ ON  
 OFFSET Q PAVEMENT ON LT : RT  
- TO - EDGE PAVEMENT  
 STATION: 258+97.49

HORIZ.DATUM: NAD83 2011 GEOID: NAVD88 2012A  
 GRID: NORTHING: 674775.972 EASTING: 1739397.569



RECORD: P.I.  
 $\Delta = 00^\circ 04' 00''$  RT  
 STA. 297+16.7  
 FD SM.R.R.SPIKE  
 5/14/02, MB  
 SET P.K./WASHER  
 7/29/02, MB  
 SET MAG/WASHER  
 4/17/15, JFO  
 FD MAG/WASHER  
 5/24/16, JFO  
 SET MAG/WASHER  
 NEWREF24  
 5/31/17, JFO  
 FD MAG/WASHER  
 4/16/2020, JLL



O.D.O.T. DISTRICT 2 SURVEY OFFICE (USE ONLY)

PERSONNEL

REFERENCE NO. 25

SHEET 3 OF 21

NOTES MOSER DATE 5/14/02  
 H.C. BARNHISEL WEATHER PTLY CLOUDY  
 R.C. LOEHRKE TEMP. 55°  
HOFFMAN

ROUTE SR 51  
 COUNTY OTTAWA  
 TOWNSHIP CLAY  
 SECTION 34

DWG BY NIESE PID 94324

T 7 N R 13 E

TYPE MONUMENT BOAT SPIKE

~~ON SURFACE~~ - BELOW 4"

OFFSET  $\varnothing$  PAVEMENT 0.5' LT : ~~RT~~

~~-~~ TO ~~-~~ EDGE PAVEMENT

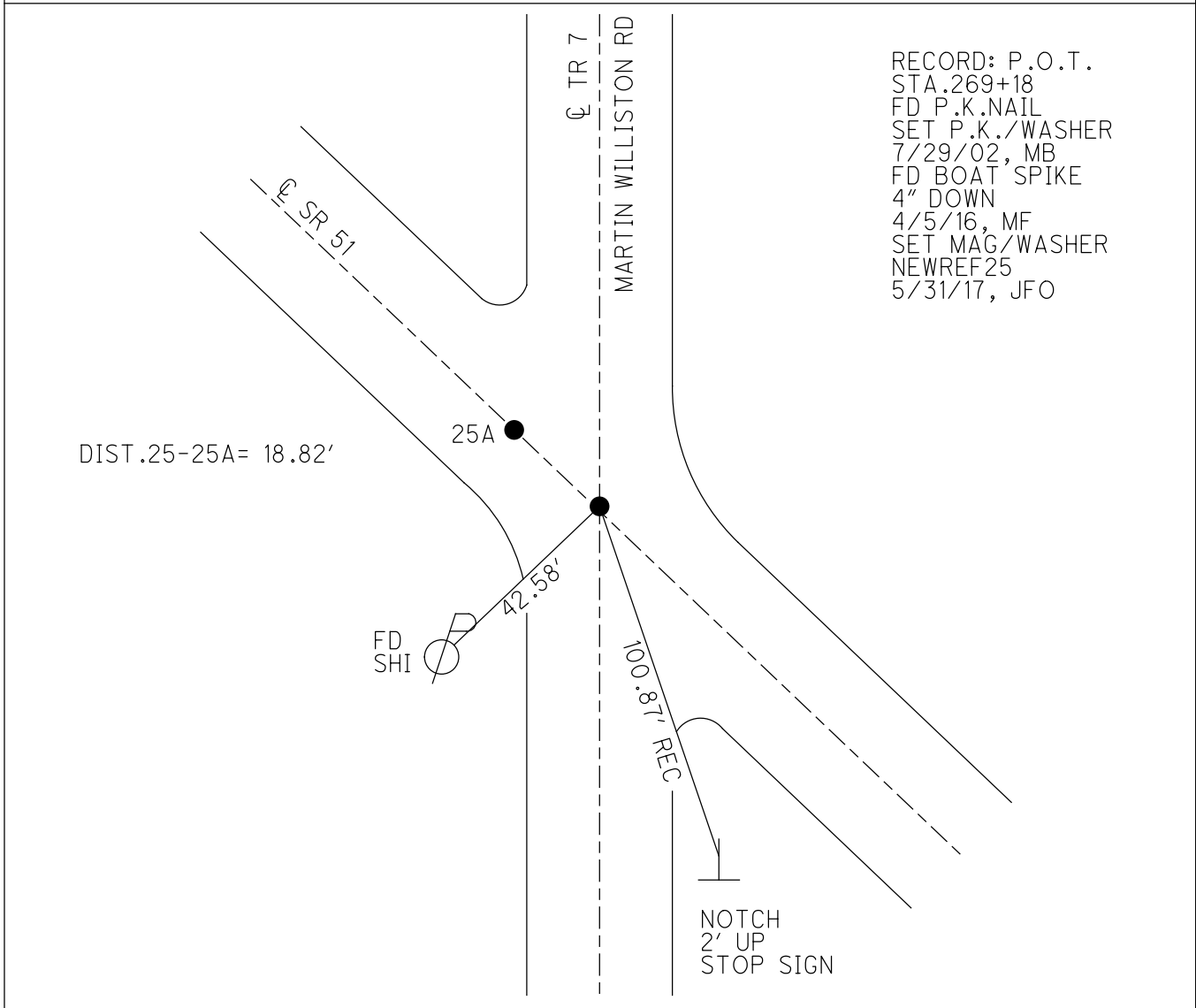
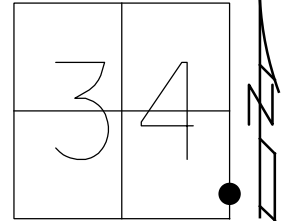
STATION: 269+03.55

HORZ.DATUM: NAD83 2011

GEOID: NAVD88 2012A

GRID: NORTHING: 675475.454

EASTING: 1738674.922



O.D.O.T. DISTRICT 2 SURVEY OFFICE (USE ONLY)

PERSONNEL

REFERENCE NO. 25 A

SHEET 4 OF 21

NOTES RHOADES

DATE 4/5/16

ROUTE SR 51

H.C. FARKAS

WEATHER CLEAR

COUNTY OTTAWA

R.C. HOMAN

TEMP. 25°

TOWNSHIP CLAY

DWG BY NIESE

PID 94324

SECTION 34

T 7 N R 13 E

TYPE MONUMENT P.K./WASHER

~~ON SURFACE~~ - BELOW 4"

OFFSET  $\phi$  PAVEMENT 0.5' LT : ~~RT~~

- TO - EDGE PAVEMENT

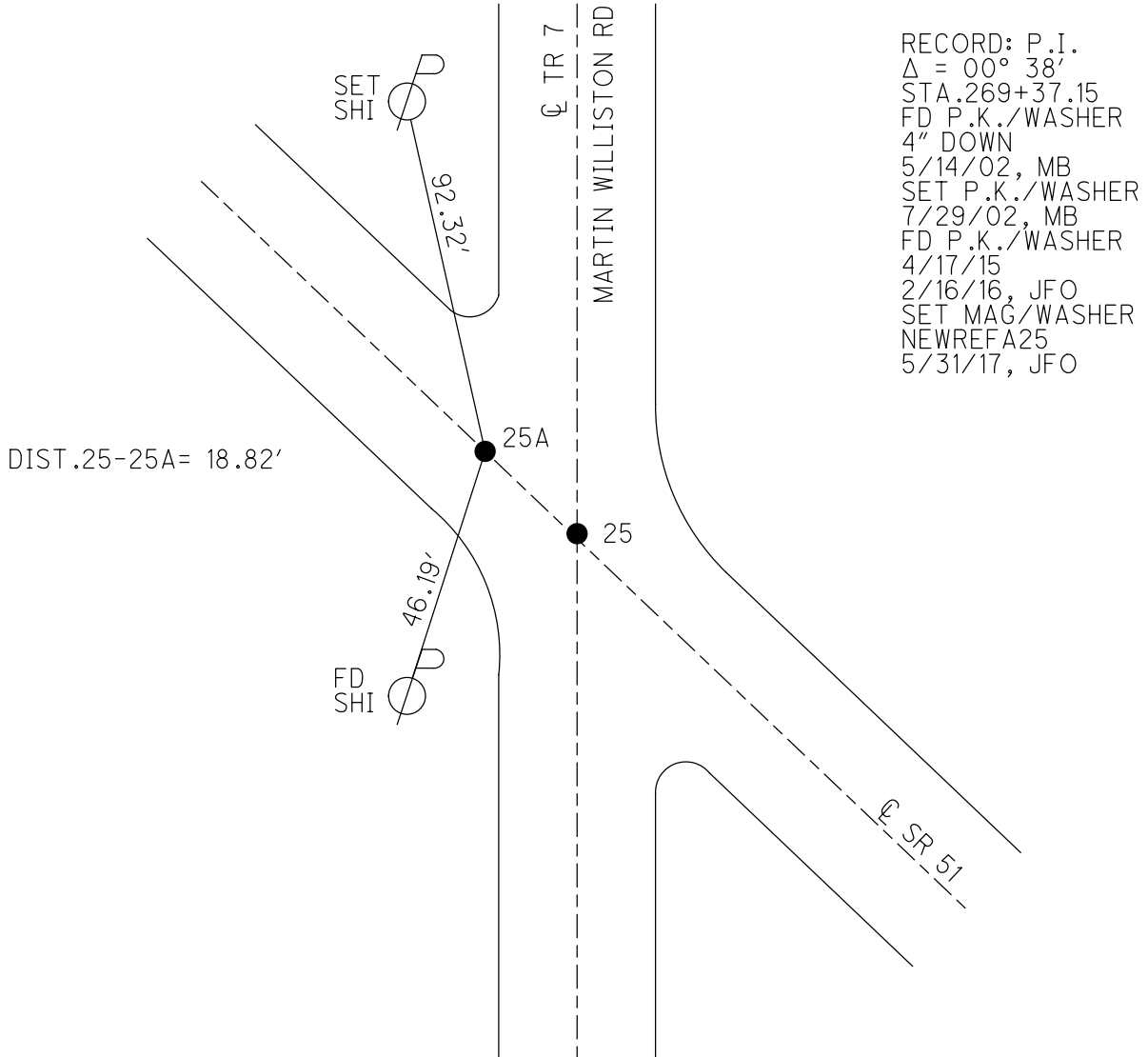
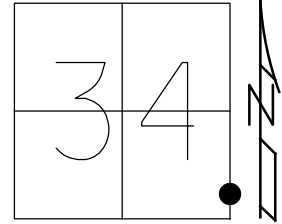
STATION: 269+22.37

HORZ.DATUM: NAD83 2011

GEOID: NAVD88 2012A

GRID: NORTHING: 675488.558

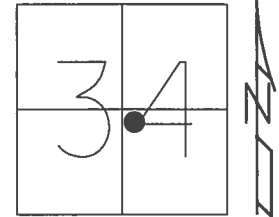
EASTING: 1738661.132



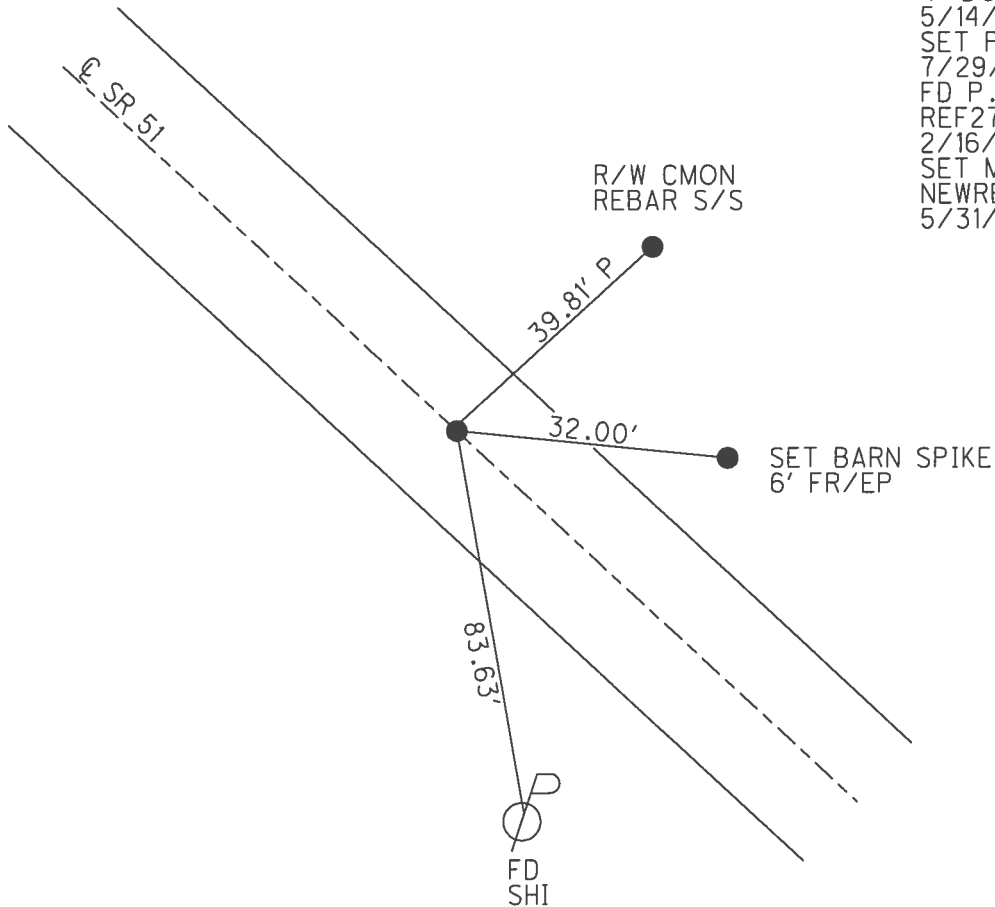
O.D.O.T. DISTRICT 2 SURVEY OFFICE (USE ONLY)

PERSONNEL \_\_\_\_\_ REFERENCE NO. 27 SHEET 5 OF 21  
 NOTES RHOADES DATE 4/5/16 ROUTE SR 51  
 H.C. FARKAS WEATHER CLEAR COUNTY OTTAWA  
 R.C. HOMAN TEMP. 25° TOWNSHIP CLAY  
 \_\_\_\_\_ SECTION 34  
 \_\_\_\_\_ T 7 N R 13 E

TYPE MONUMENT P.K./WASHER  
 ON SURFACE - ~~BELOW~~ ON \_\_\_\_\_  
 LEFT - ☉ PAV'T - ~~RIGHT~~ 0.8'  
 \_\_\_\_\_ TO \_\_\_\_\_ EDGE PAVEMENT  
 S.L.M. 297+89  
 Grid: Northing: 677395.520 Easting: 1736642.637



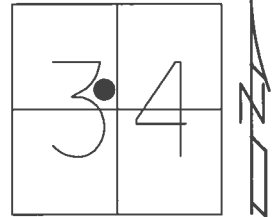
RECORD: P.I.  
 $\Delta = 0^\circ 04'$   
 297+16.7  
 FD SM.R.R.SPIKE  
 FD P.K./WASHER  
 4" DOWN  
 5/14/02, MB  
 SET P.K./WASHER  
 7/29/02, MB  
 FD P.K./WASHER  
 REF27  
 2/16/16, JFO  
 SET MAG/WASHER  
 NEWREF27  
 5/31/17, JFO



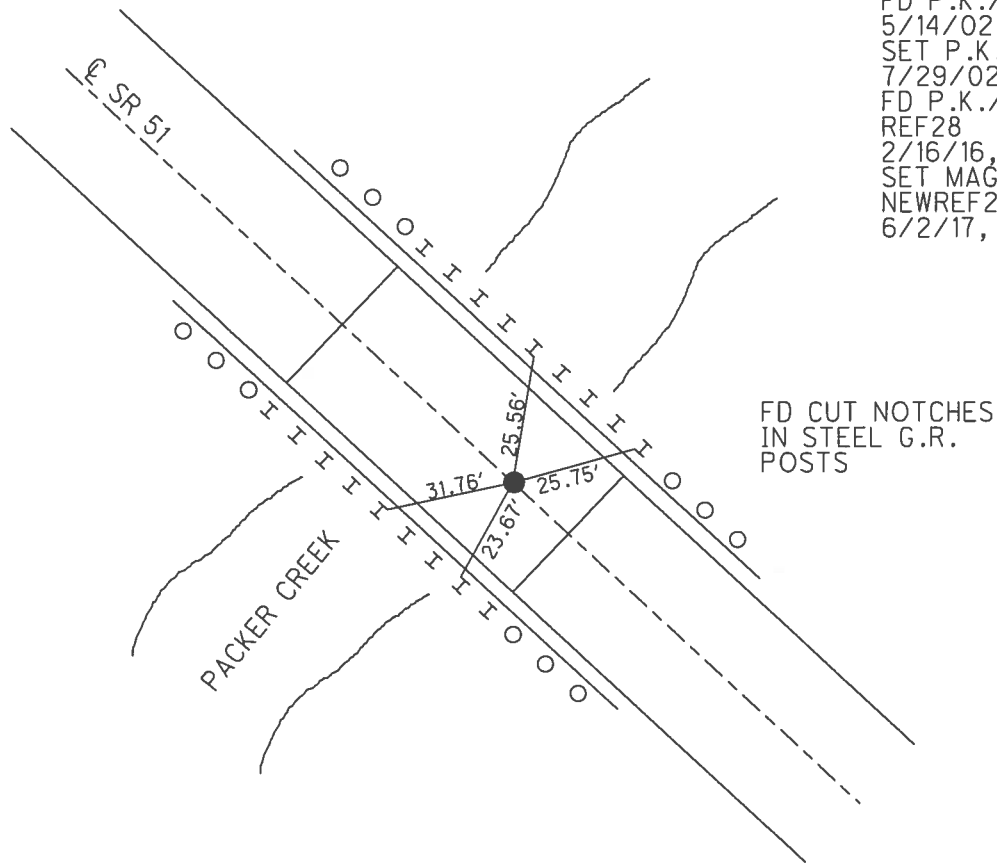
O.D.O.T. DISTRICT 2 SURVEY OFFICE (USE ONLY)

PERSONNEL \_\_\_\_\_ REFERENCE NO. 28 SHEET 6 OF 21  
 NOTES RHOADES DATE 4/5/16 ROUTE SR 51  
 H.C. FARKAS WEATHER CLEAR COUNTY OTTAWA  
 R.C. HOMAN TEMP. 26° TOWNSHIP CLAY  
 \_\_\_\_\_ SECTION 34  
 \_\_\_\_\_ T 7 N R 13 E

TYPE MONUMENT P.K.NAIL  
 ON SURFACE - ~~BELOW~~ ON  
 LEFT - ☉ PAV'T - RIGHT ON  
- TO - EDGE PAVEMENT  
 S.L.M. 308+80  
 Grid: Northing: 678141.995 Easting: 1735847.236



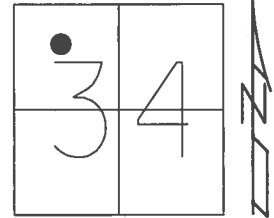
RECORD: P.I.  
 $\Delta = 0^\circ 35' \text{ LT}$   
 308+07.20  
 SET P.K.NAIL  
 1/12/72  
 FD P.K./WASHER  
 5/14/02, MB  
 SET P.K./WASHER  
 7/29/02, MB  
 FD P.K./WASHER  
 REF28  
 2/16/16, JFO  
 SET MAG/WASHER  
 NEWREF28  
 6/2/17, JFO



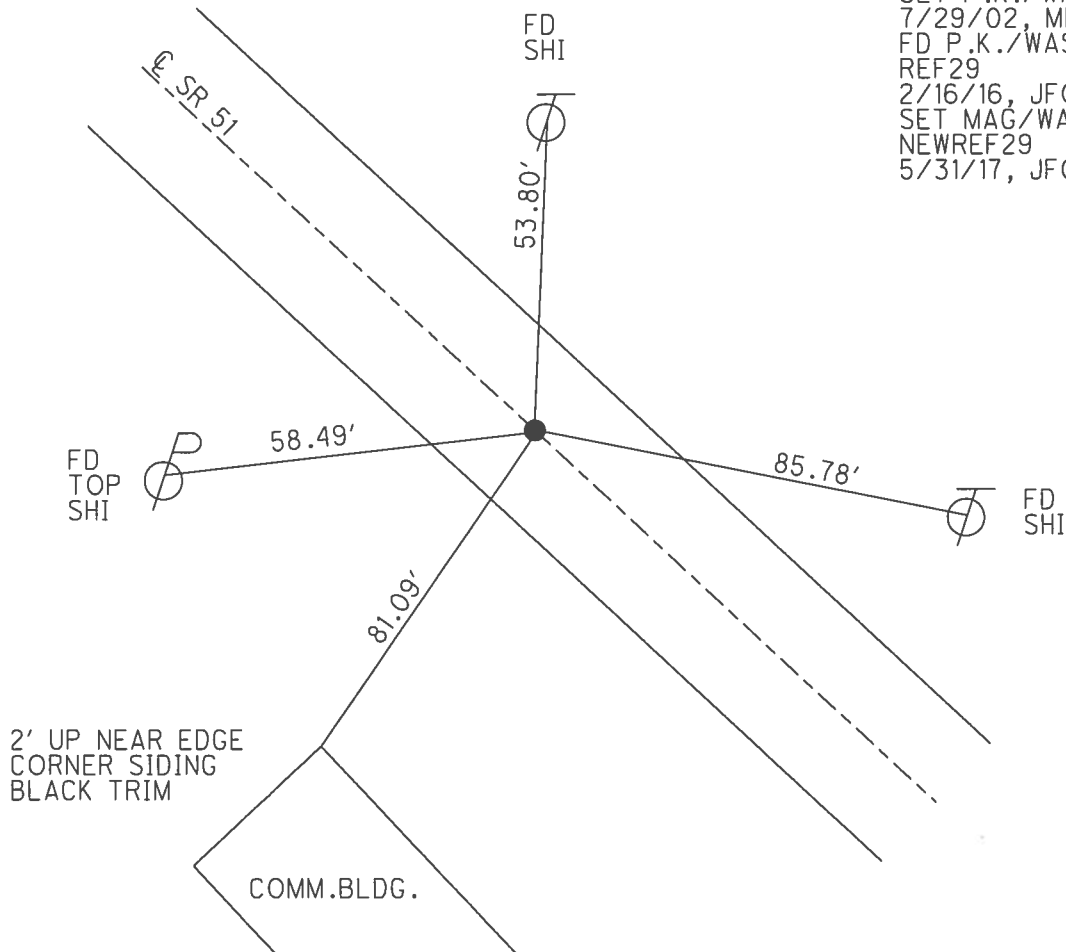
O.D.O.T. DISTRICT 2 SURVEY OFFICE (USE ONLY)

PERSONNEL	REFERENCE NO.	<u>29</u>	SHEET	<u>7</u>	OF	<u>21</u>
NOTES	<u>RHOADES</u>	DATE	<u>4/5/16</u>	ROUTE	<u>SR 51</u>	
H.C.	<u>FARKAS</u>	WEATHER	<u>CLEAR</u>	COUNTY	<u>OTTAWA</u>	
R.C.	<u>HOMAN</u>	TEMP.	<u>26°</u>	TOWNSHIP	<u>CLAY</u>	
				SECTION	<u>34</u>	
				T	<u>7</u>	N
				R	<u>13</u>	E

TYPE MONUMENT P.K./WASHER  
 ON SURFACE - ~~BELOW~~ ON  
 LEFT - ℄ PAV'T - ~~RIGHT~~ 0.5'  
17.9' TO LT EDGE PAVEMENT  
 S.L.M. 322+55  
 Grid: Northing: 679072.124 Easting: 1734836.037



RECORD: P.I.  
 $\Delta = 0^\circ 27' RT$   
 321+80.7  
 FD SM.R.R.SPIKE  
 5/14/02, MB  
 SET P.K./WASHER  
 7/29/02, MB  
 FD P.K./WASHER  
 REF29  
 2/16/16, JFO  
 SET MAG/WASHER  
 NEWREF29  
 5/31/17, JFO

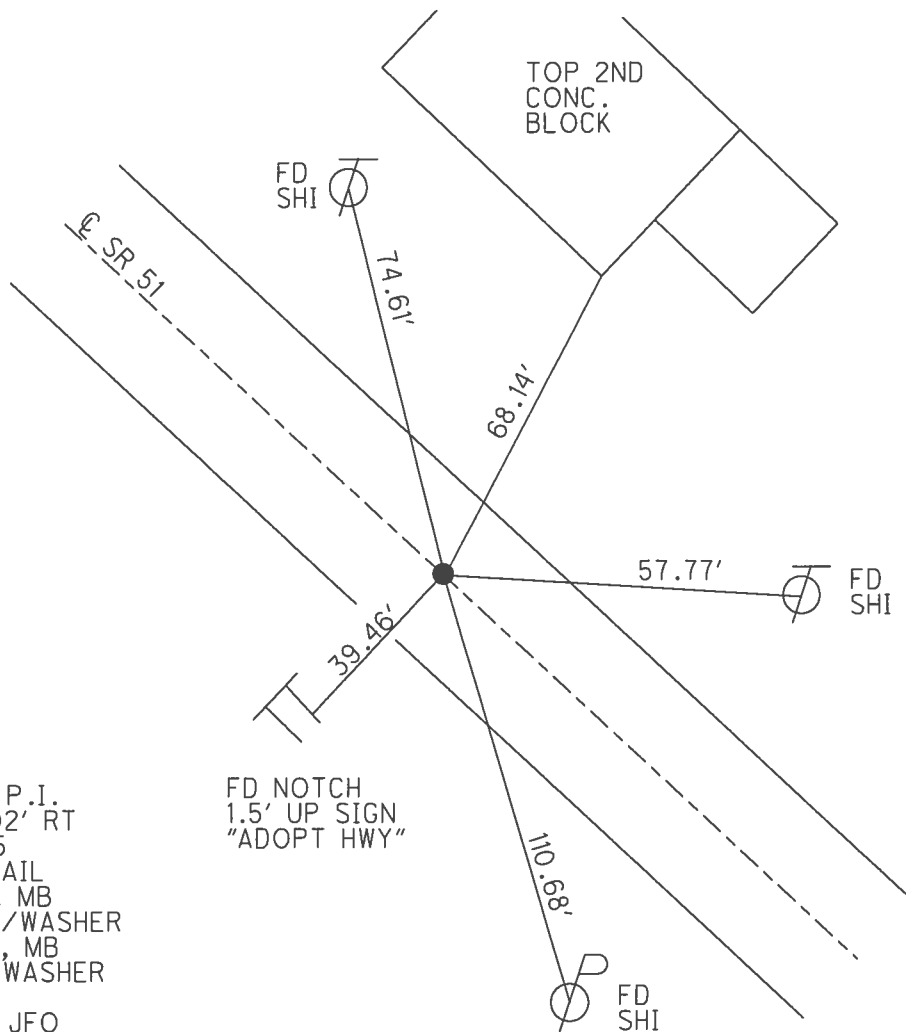
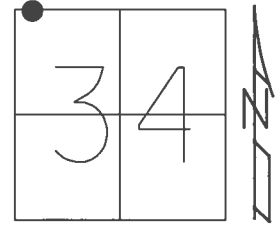




O.D.O.T. DISTRICT 2 SURVEY OFFICE (USE ONLY)

PERSONNEL \_\_\_\_\_ REFERENCE NO. 30 SHEET 8 OF 21  
 NOTES RHOADES DATE 4/5/16 ROUTE SR 51  
 H.C. FARKAS WEATHER CLOUDY COUNTY OTTAWA  
 R.C. HOMAN TEMP. 26° TOWNSHIP CLAY  
 SECTION 34  
 T 7 N R 13 E

TYPE MONUMENT P.K./WASHER  
 ON SURFACE - ~~BELOW~~ ON \_\_\_\_\_  
 LEFT - ☉ PAV'T - RIGHT ON \_\_\_\_\_  
17.8' TO LT EDGE PAVEMENT  
 S.L.M. 334+72  
 Grid: Northing: 679902.194 Easting: 1733947.734



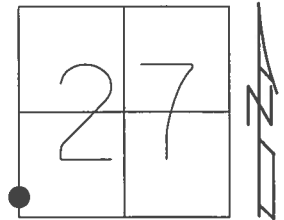
RECORD: P.I.  
 $\Delta = 0^\circ 02' RT$   
 333+82.5  
 FD P.K. NAIL  
 5/14/02, MB  
 SET P.K./WASHER  
 7/29/02, MB  
 FD P.K./WASHER  
 REF30  
 2/16/16, JFO  
 SET MAG/WASHER  
 NEWREF30  
 5/31/17, JFO

FD NOTCH  
 1.5' UP SIGN  
 "ADOPT HWY"

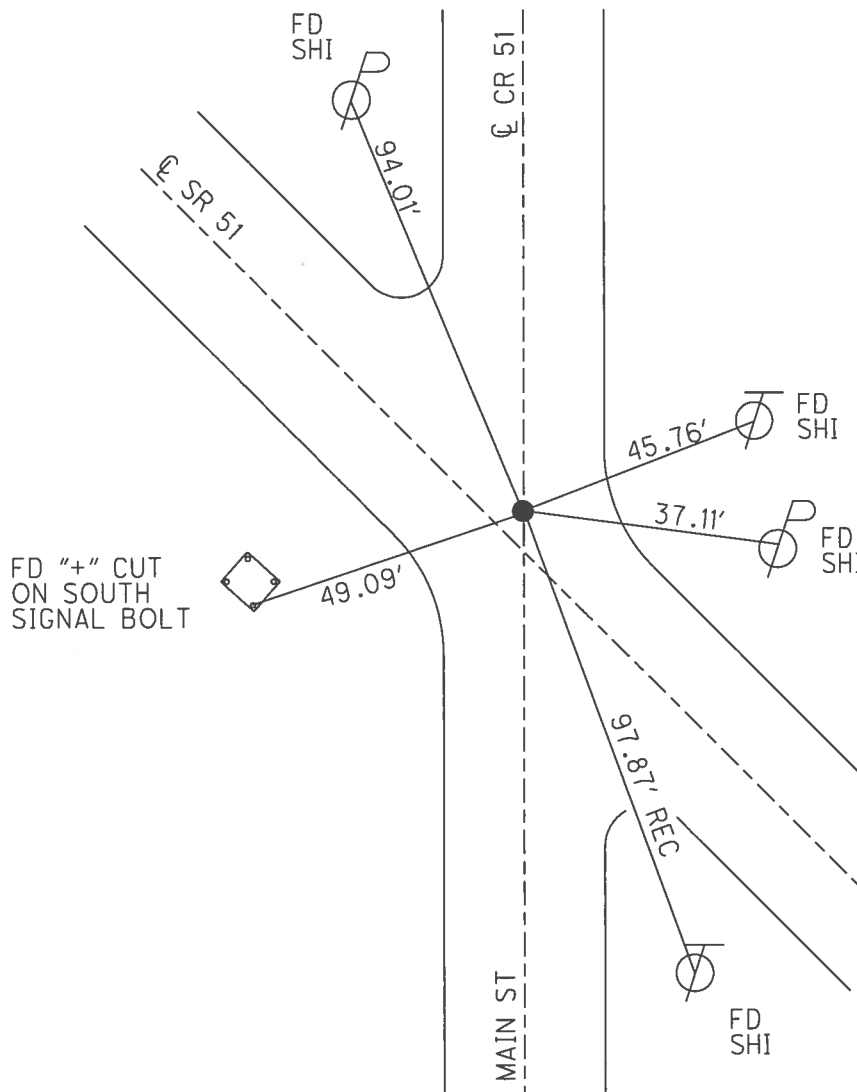
O.D.O.T. DISTRICT 2 SURVEY OFFICE (USE ONLY)

PERSONNEL \_\_\_\_\_ REFERENCE NO. 32 SHEET 9 OF 21  
 NOTES RHOADES DATE 4/5/16 ROUTE SR 51  
 H.C. FARKAS WEATHER CLOUDY COUNTY OTTAWA  
 R.C. HOMAN TEMP. 26° TOWNSHIP CLAY  
 \_\_\_\_\_ SECTION 27  
 \_\_\_\_\_ T 7 N R 13 E

TYPE MONUMENT P.K./WASHER  
~~ON SURFACE~~ - BELOW 3 1/2"  
~~LEFT~~ - ☉ PAV'T - RIGHT 1'  
 \_\_\_\_\_ TO \_\_\_\_\_ EDGE PAVEMENT  
 S.L.M. 342+06



Grid: Northing: 680402.766 Easting: 1733412.563

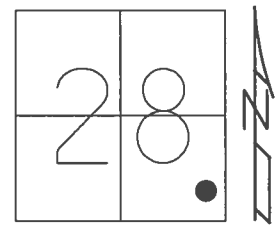


RECORD: P.I.  
 $\Delta = 0^\circ 26' RT$   
 207+50  
 FD P.K.NAIL  
 5/15/02, MB  
 SET P.K./WASHER  
 7/29/02, MB  
 FD P.K./WASHER  
 3 1/2" DOWN  
 REF32  
 4/5/16, JFO  
 SET MAG/WASHER  
 NEWREF32  
 5/31/17, JFO

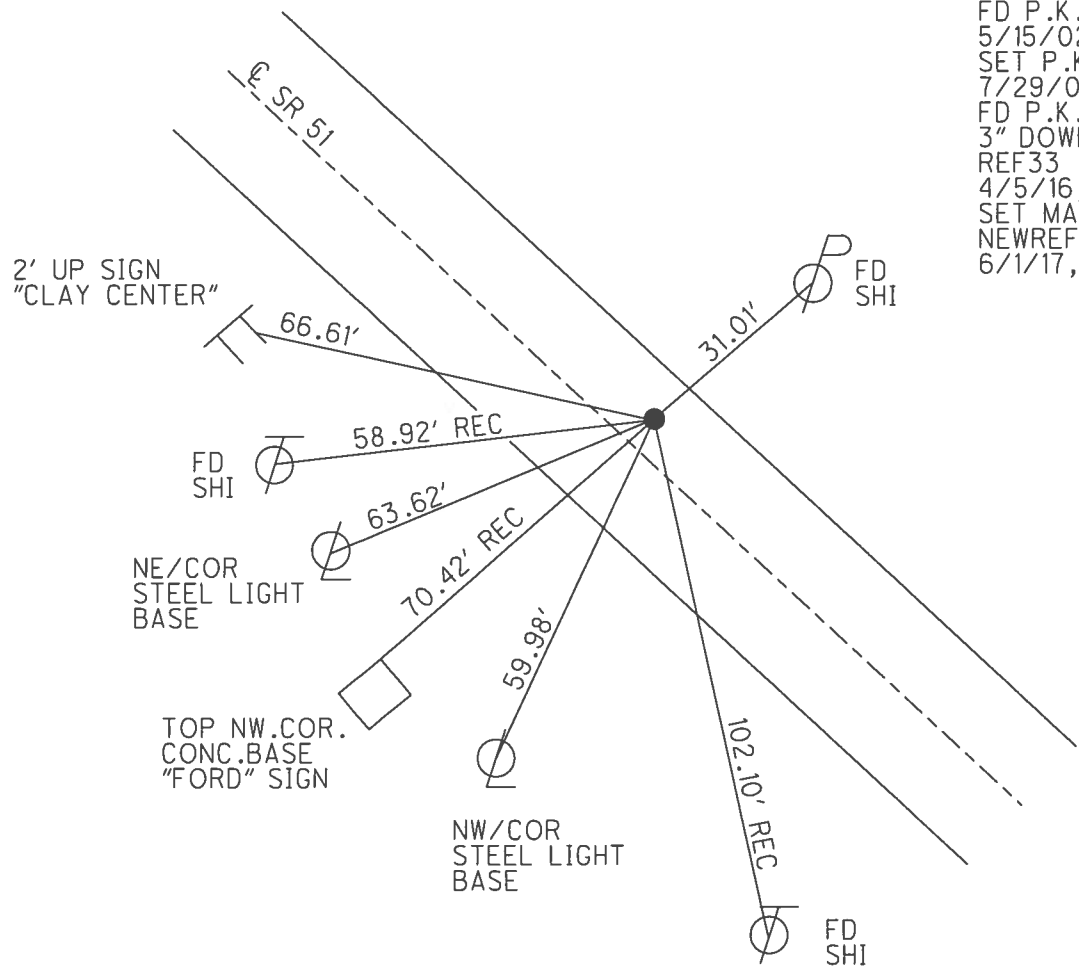
O.D.O.T. DISTRICT 2 SURVEY OFFICE (USE ONLY)

PERSONNEL	REFERENCE NO.	33	SHEET	10	OF	21
NOTES	RHOADES	DATE	4/5/16	ROUTE	SR 51	
H.C.	FARKAS	WEATHER	CLOUDY	COUNTY	OTTAWA	
R.C.	HOMAN	TEMP.	30°	TOWNSHIP	CLAY	
				SECTION	28	
				T	7	N
				R	13	E

TYPE MONUMENT P.K.NAIL, BENT  
~~ON SURFACE~~ - BELOW 3"  
~~LEFT~~ - C PAV'T - RIGHT 7.4'  
9.6' TO RT EDGE PAVEMENT  
 S.L.M. 348+56  
 Grid: Northing: 680843.721 Easting: 1732934.011



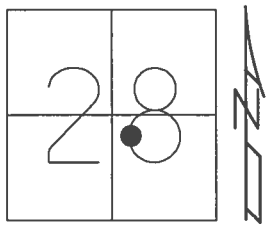
RECORD: P.I.  
 $\Delta = 0^\circ 45' 50''$  RT  
 200+99.23  
 FD P.K.NAIL  
 12/15/86, RIPPLE  
 FD P.K.SHANK  
 5/15/02, MB  
 SET P.K./WASHER  
 7/29/02, MB  
 FD P.K.NAIL, BENT  
 3" DOWN  
 REF33  
 4/5/16, JFO  
 SET MAG/WASHER  
 NEWREF33  
 6/1/17, JFO



O.D.O.T. DISTRICT 2 SURVEY OFFICE (USE ONLY)

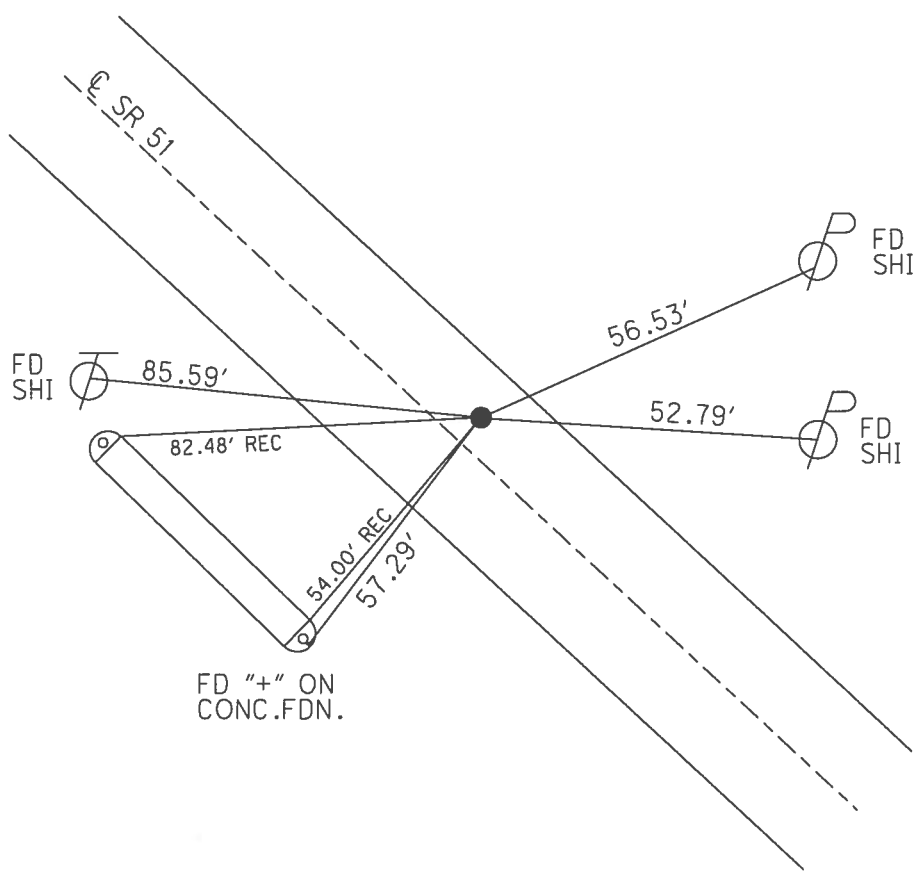
PERSONNEL	REFERENCE NO.	34	SHEET	11	OF	21
NOTES	RHOADES	DATE	4/5/16	ROUTE	SR 51	
H.C.	FARKAS	WEATHER	CLOUDY	COUNTY	OTTAWA	
R.C.	HOMAN	TEMP.	30°	TOWNSHIP	CLAY	
				SECTION	28	
				T	7	N
				R	13	E

TYPE MONUMENT P.K./WASHER  
 ON SURFACE - ~~BELOW~~ ON \_\_\_\_\_  
~~LEFT~~ - C PAV'T - RIGHT 8.1'  
10.2' TO RT EDGE PAVEMENT  
 S.L.M. 371+90



Grid: Northing: 682399.931 Easting: 1731199.265

RECORD: P.I.  
 $\Delta = 0^{\circ}0'30''$  LT  
 371+12.47  
 FD R.R.SPIKE  
 SET P.K.NAIL  
 1/19/72  
 FD P.K.NAIL  
 2" DOWN  
 5/15/02, MB  
 SET P.K./WASHER  
 7/29/02, MB  
 FD P.K./WASHER  
 REF34  
 2/16/16, JFO  
 SET MAG/WASHER  
 NEWREF34  
 6/1/17, JFO

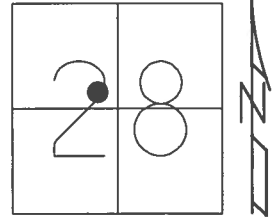


FD "+" ON  
 CONC.FDN.

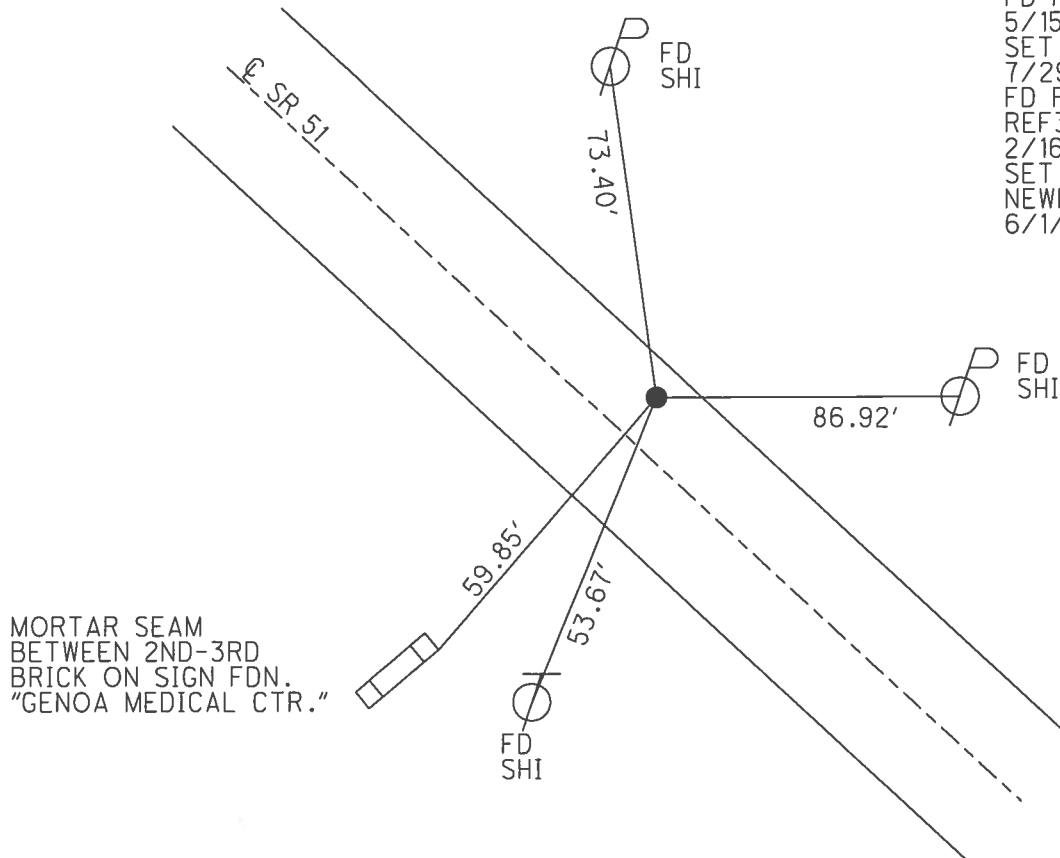
O.D.O.T. DISTRICT 2 SURVEY OFFICE (USE ONLY)

PERSONNEL \_\_\_\_\_ REFERENCE NO. 35 SHEET 12 OF 21  
 NOTES RHOADES DATE 4/5/16 ROUTE SR 51  
 H.C. FARKAS WEATHER CLOUDY COUNTY OTTAWA  
 R.C. HOMAN TEMP. 26° TOWNSHIP CLAY  
 \_\_\_\_\_ SECTION 28  
 \_\_\_\_\_ T 7 N R 13 E

TYPE MONUMENT P.K./WASHER  
 ON SURFACE - ~~BELOW~~ ON  
~~LEFT~~ - Q PAV'T - RIGHT 6.6'  
4.9' TO RT EDGE PAVEMENT  
 S.L.M. 385+20  
 Grid: Northing: 683286.675 Easting: 1730210.449



RECORD: P.I.  
 $\Delta = 0^{\circ}0'30''$  LT  
 384+40.1  
 FD R.R.SPIKE  
 SET P.K.NAIL  
 1/19/72  
 FD P.K.NAIL  
 5/15/02, MB  
 SET P.K./WASHER  
 7/29/02, MB  
 FD P.K./WASHER  
 REF35  
 2/16/16, JFO  
 SET MAG/WASHER  
 NEWREF35  
 6/1/17, JFO



O.D.O.T. DISTRICT 2 SURVEY OFFICE (USE ONLY)

PERSONNEL	REFERENCE NO.	<u>36</u>	SHEET	<u>13</u>	OF	<u>21</u>
NOTES	<u>RHOADES</u>	DATE	<u>4/5/16</u>	ROUTE	<u>SR 51</u>	
H.C.	<u>FARKAS</u>	WEATHER	<u>CLOUDY</u>	COUNTY	<u>OTTAWA</u>	
R.C.	<u>HOMAN</u>	TEMP.	<u>26°</u>	TOWNSHIP	<u>CLAY</u>	
				SECTION	<u>28</u>	
				T	<u>7</u>	R
					<u>13</u>	E

TYPE MONUMENT P.K.SHANK

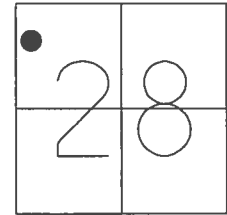
~~ON SURFACE~~ - BELOW 1"

~~LEFT~~ - CL PAV'T - RIGHT 7.0'

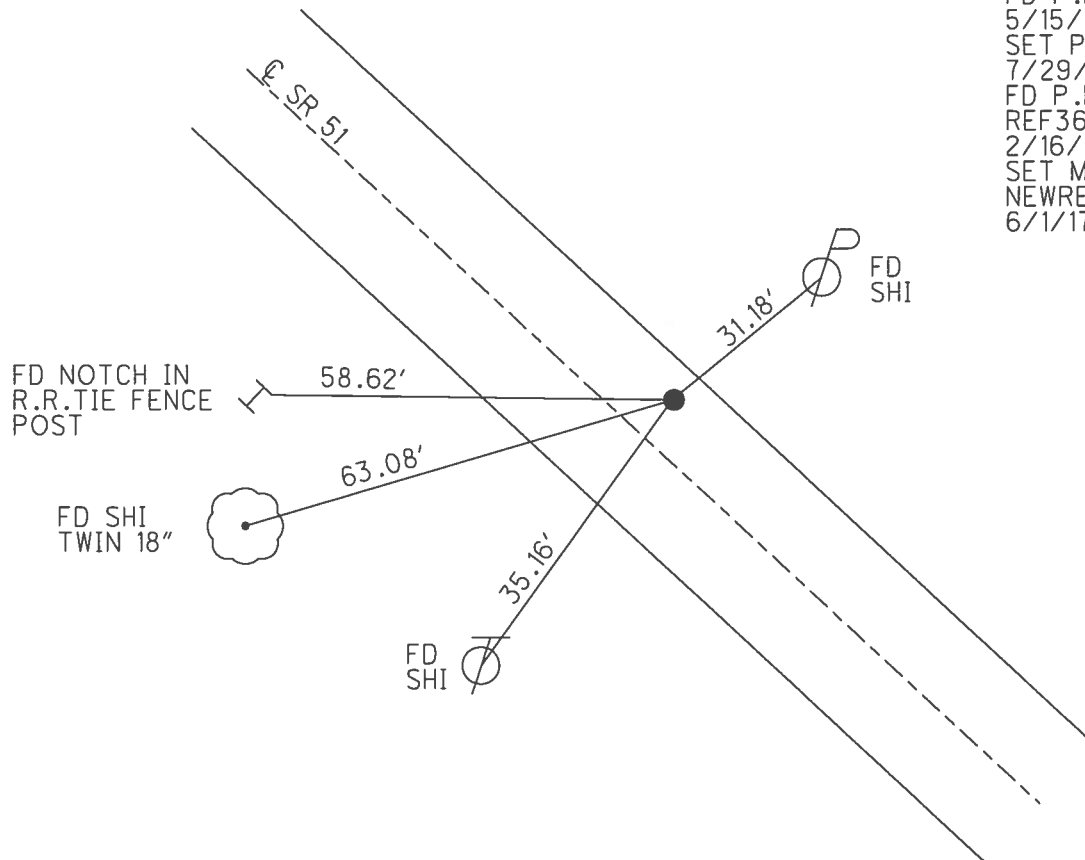
4.7' TO RT EDGE PAVEMENT

S.L.M. 407+19

Grid: Northing: 684753.329 Easting: 1728574.312



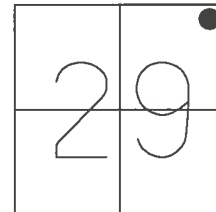
RECORD: P.I.  
 $\Delta = 0^\circ 03' \text{ LT}$   
 406+37.55  
 FD R.R.SPIKE  
 1/19/72  
 FD P.K.NAIL  
 5/15/02, MB  
 SET P.K./WASHER  
 7/29/02, MB  
 FD P.K.SHANK  
 REF36  
 2/16/16, JFO  
 SET MAG/WASHER  
 NEWREF36  
 6/1/17, JFO



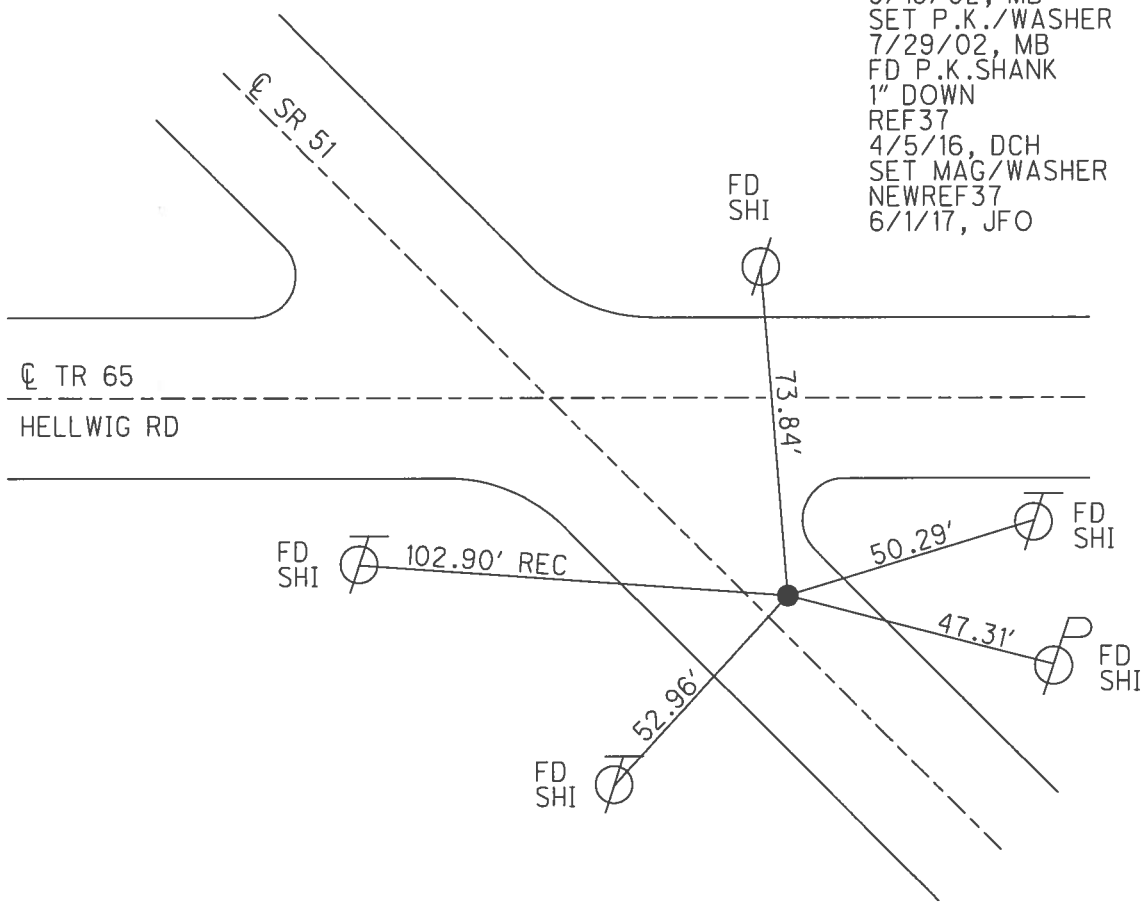
O.D.O.T. DISTRICT 2 SURVEY OFFICE (USE ONLY)

PERSONNEL	REFERENCE NO.	<u>37</u>	SHEET	<u>14</u>	OF	<u>21</u>
NOTES	<u>RHOADES</u>	DATE	<u>4/5/16</u>	ROUTE	<u>SR 51</u>	
H.C.	<u>FARKAS</u>	WEATHER	<u>CLOUDY</u>	COUNTY	<u>OTTAWA</u>	
R.C.	<u>HOMAN</u>	TEMP.	<u>26°</u>	TOWNSHIP	<u>CLAY</u>	
				SECTION	<u>29</u>	
					<u>T 7 N R 13 E</u>	

TYPE MONUMENT P.K.SHANK  
~~ON SURFACE~~ - BELOW 1"  
~~LEFT~~ - CL PAV'T - RIGHT 5.0'  
7.2' TO RT EDGE PAVEMENT  
 S.L.M. 417+23  
 Grid: Northing: 685423.515 Easting: 1727828.562



RECORD: P.I.  
 $\Delta = 0^\circ 05' RT$   
 416+39.9  
 FD R.R.SPIKE  
 1/19/72  
 FD R.R.SPIKE  
 4" DOWN  
 5/15/02, MB  
 SET P.K./WASHER  
 7/29/02, MB  
 FD P.K.SHANK  
 1" DOWN  
 REF37  
 4/5/16, DCH  
 SET MAG/WASHER  
 NEWREF37  
 6/1/17, JFO

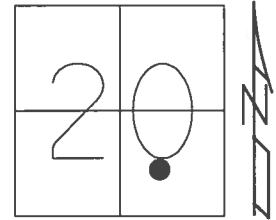


O.D.O.T. DISTRICT 2 SURVEY OFFICE (USE ONLY)

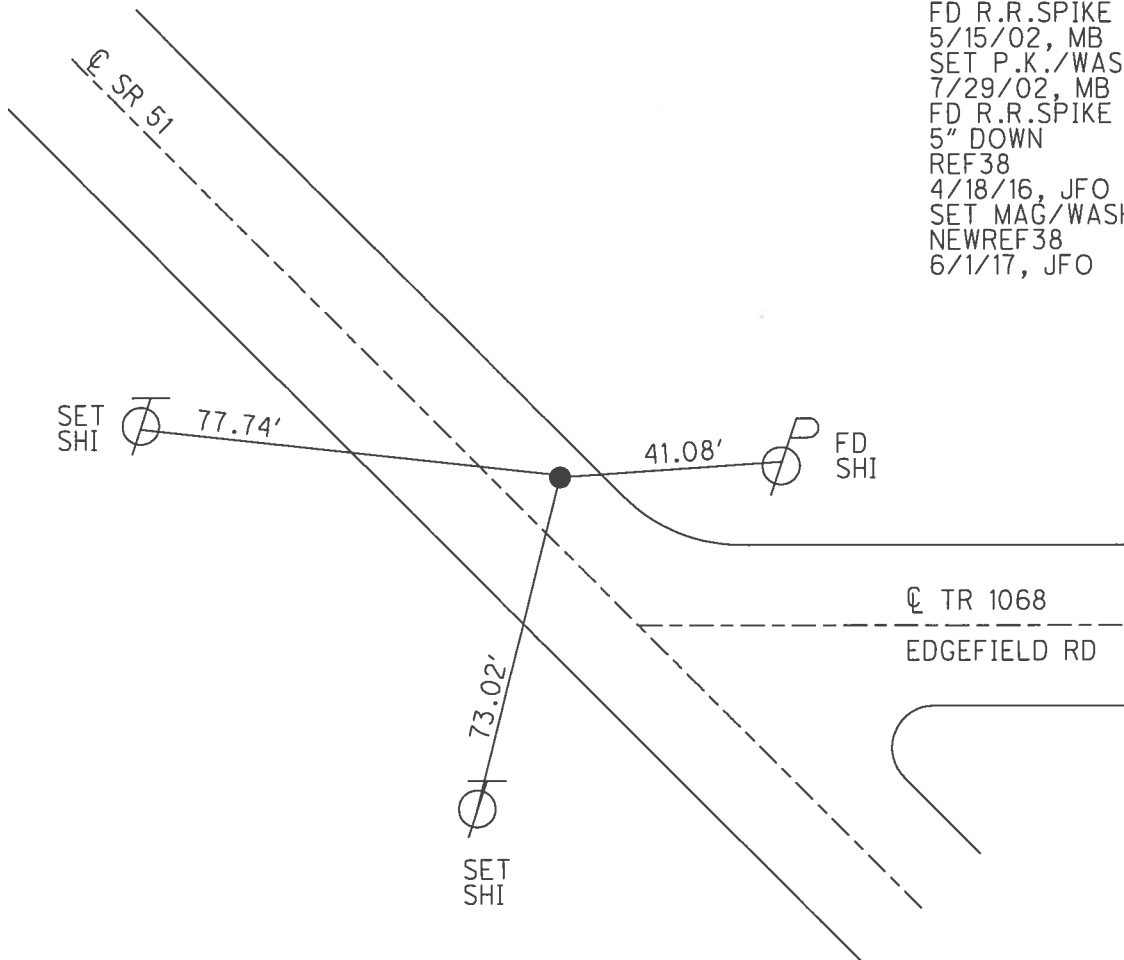
PERSONNEL \_\_\_\_\_ REFERENCE NO. 38 SHEET 15 OF 21  
 NOTES RHOADES DATE 4/18/16 ROUTE SR 51  
 H.C. O'DONNELL WEATHER SUNNY COUNTY OTTAWA  
 R.C. RHOADES TEMP. 50° TOWNSHIP CLAY  
 SECTION 20  
 T 7 N R 13 E

TYPE MONUMENT R.R.SPIKE  
~~ON SURFACE~~ - BELOW 5"  
~~LEFT~~ - CL PAV'T - RIGHT 4.4'  
7.0' TO RT EDGE PAVEMENT  
 S.L.M. 438+11

Grid: Northing: 686822.715 Easting: 1726275.952



RECORD: P.O.T.  
 437+29.7  
 FD R.R.SPIKE  
 1/19/72  
 FD R.R.SPIKE  
 5/15/02, MB  
 SET P.K./WASHER  
 7/29/02, MB  
 FD R.R.SPIKE  
 5" DOWN  
 REF38  
 4/18/16, JFO  
 SET MAG/WASHER  
 NEWREF38  
 6/1/17, JFO

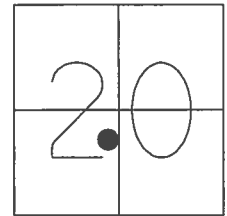




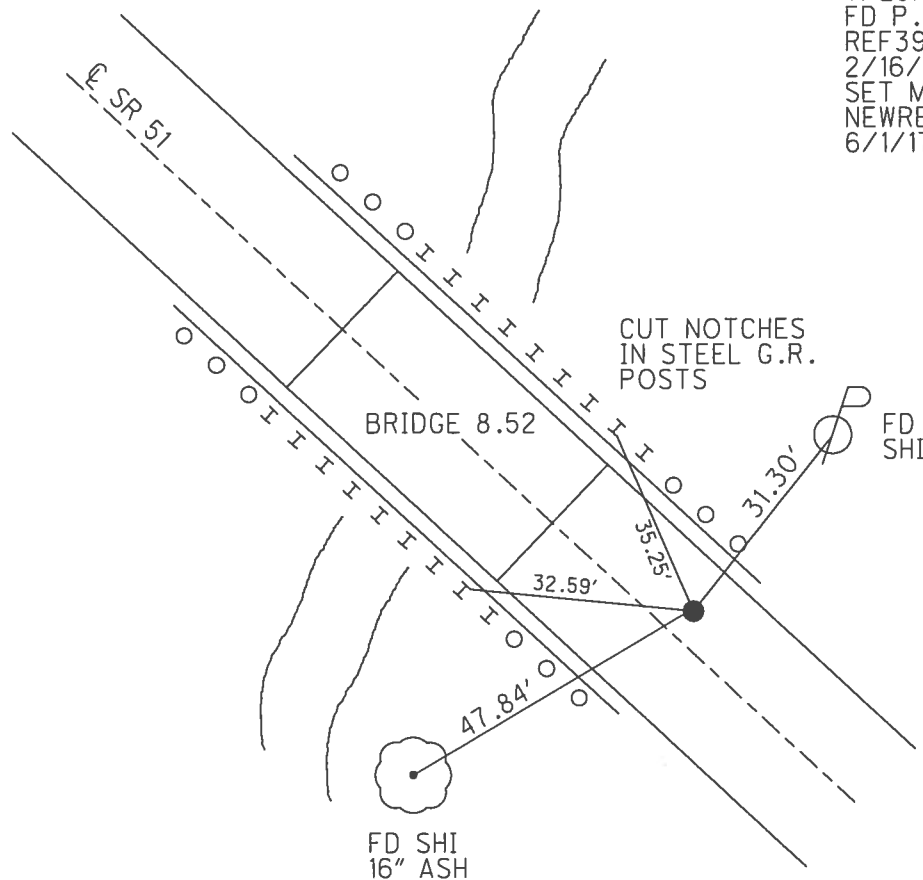
O.D.O.T. DISTRICT 2 SURVEY OFFICE (USE ONLY)

PERSONNEL \_\_\_\_\_ REFERENCE NO. 39 SHEET 16 OF 21  
 NOTES RHOADES DATE 4/18/16 ROUTE SR 51  
 H.C. O'DONNELL WEATHER SUNNY COUNTY OTTAWA  
 R.C. RHOADES TEMP. 50° TOWNSHIP CLAY  
 \_\_\_\_\_ SECTION 20  
 \_\_\_\_\_ T 7 N R 13 E

TYPE MONUMENT P.K./WASHER  
 ON SURFACE - ~~BELOW~~ ON \_\_\_\_\_  
~~LEFT~~ - Q PAV'T - RIGHT 4.8'  
6.4' TO RT EDGE PAVEMENT  
 S.L.M. 450+02  
 Grid: Northing: 687617.794 Easting: 1725393.483



RECORD: P.I.  
 $\Delta = 0^\circ 13' 30''$  RT  
 449+19.9  
 FD R.R.SPIKE  
 5/15/02, MB  
 SET P.K./WASHER  
 7/29/02, MB  
 FD P.K./WASHER  
 REF39  
 2/16/16, JFO  
 SET MAG/WASHER  
 NEWREF39  
 6/1/17, JFO



O.D.O.T. DISTRICT 2 SURVEY OFFICE (USE ONLY)

PERSONNEL	REFERENCE NO.	40	SHEET	17	OF	21
NOTES	RHOADES	DATE	4/18/16	ROUTE	SR 51	
H.C.	O'DONNELL	WEATHER	SUNNY	COUNTY	OTTAWA	
R.C.	RHOADES	TEMP.	50°	TOWNSHIP	CLAY	
				SECTION	20	
				T	7	N
				R	13	E

TYPE MONUMENT P.K./WASHER

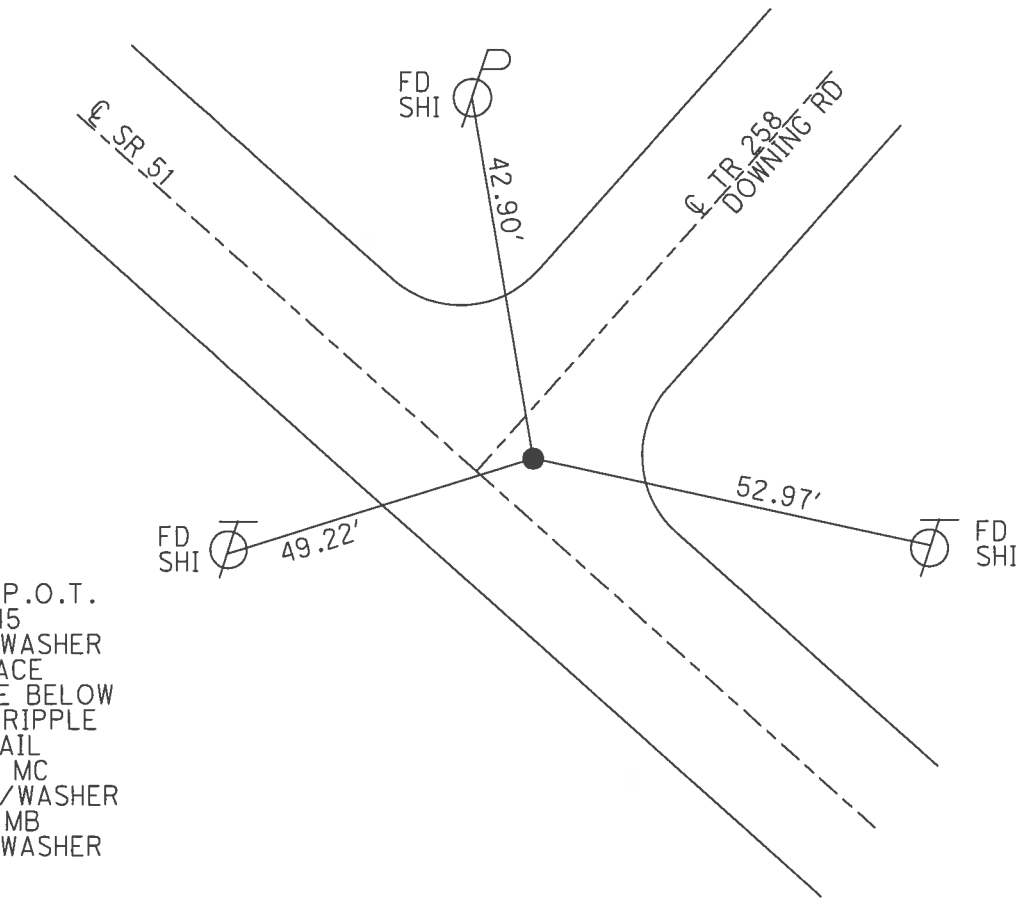
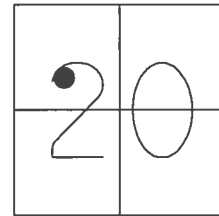
~~ON SURFACE~~ - BELOW 3"

~~LEFT~~ - ℄ PAV'T - RIGHT 6.3'

- TO - EDGE PAVEMENT

S.L.M. 468+66

Grid: Northing: 688872.603 Easting: 1724012.162

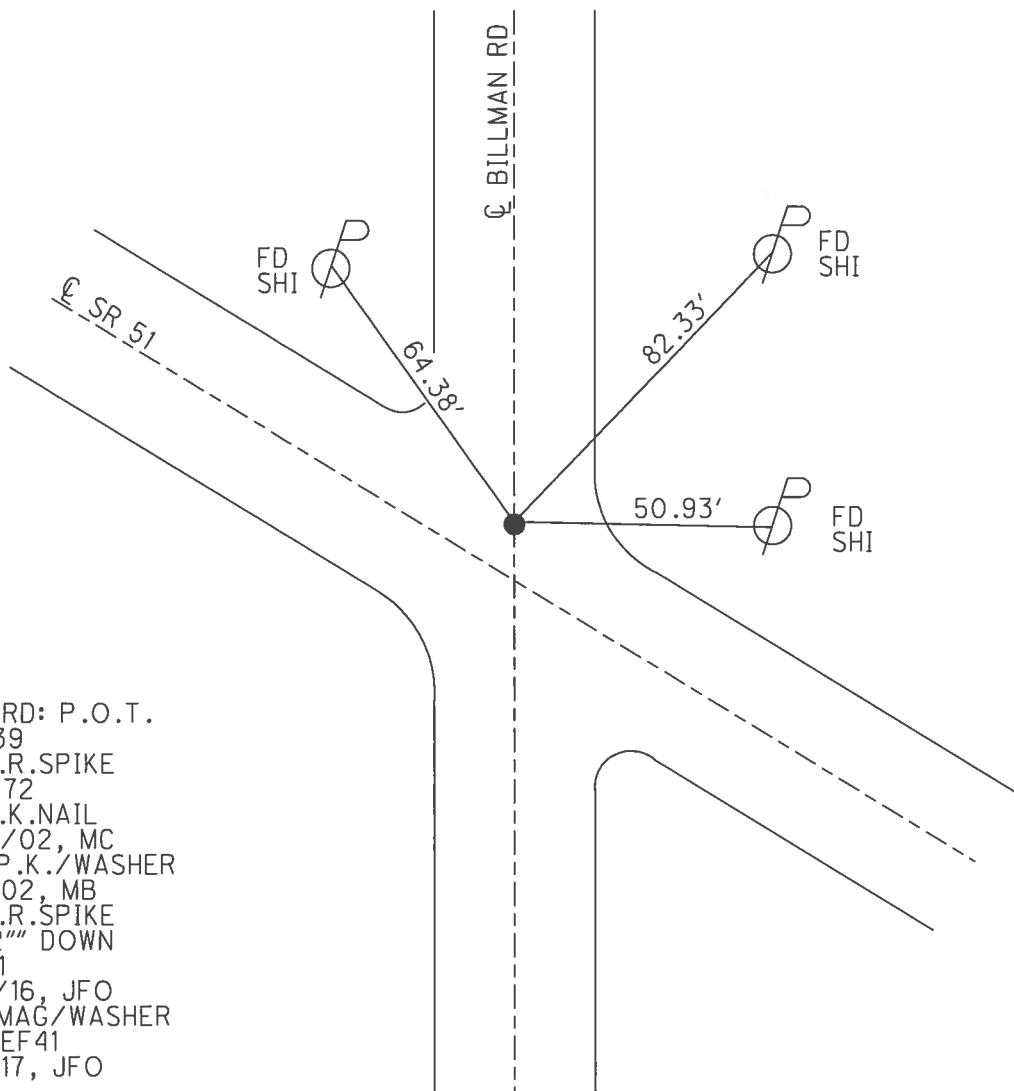
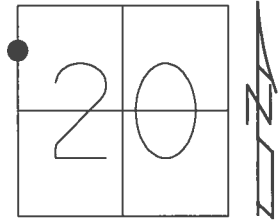


RECORD: P.O.T.  
 473+07.45  
 FD P.K./WASHER  
 ON SURFACE  
 R.R.SPIKE BELOW  
 8/4/82, RIPPLE  
 FD P.K.NAIL  
 5/17/02, MC  
 SET P.K./WASHER  
 8/5/02, MB  
 FD P.K./WASHER  
 3" DOWN  
 REF40  
 4/18/16, JFO  
 SET MAG/WASHER  
 NEWREF40  
 6/1/17, JFO

O.D.O.T. DISTRICT 2 SURVEY OFFICE (USE ONLY)

PERSONNEL \_\_\_\_\_ REFERENCE NO. 41 SHEET 18 OF 21  
 NOTES RHOADES DATE 4/18/16 ROUTE SR 51  
 H.C. O'DONNELL WEATHER SUNNY COUNTY OTTAWA  
 R.C. RHOADES TEMP. 50° TOWNSHIP CLAY  
 \_\_\_\_\_ SECTION 20  
 \_\_\_\_\_ T 7 N R 13 E

TYPE MONUMENT R.R.SPIKE  
~~ON SURFACE~~ - BELOW 4 1/2"  
~~LEFT~~ - CL PAV'T - RIGHT 6.1', ON CL N.  
- TO - EDGE PAVEMENT  
 S.L.M. 482+24  
 Grid: Northing: 689783.011 Easting: 1723009.620

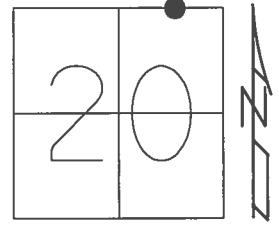


RECORD: P.O.T.  
 481+39  
 FD R.R.SPIKE  
 1/19/72  
 FD P.K.NAIL  
 5/20/02, MC  
 SET P.K./WASHER  
 8/5/02, MB  
 FD R.R.SPIKE  
 4 1/2" DOWN  
 REF41  
 4/18/16, JFO  
 SET MAG/WASHER  
 NEWREF41  
 6/2/17, JFO

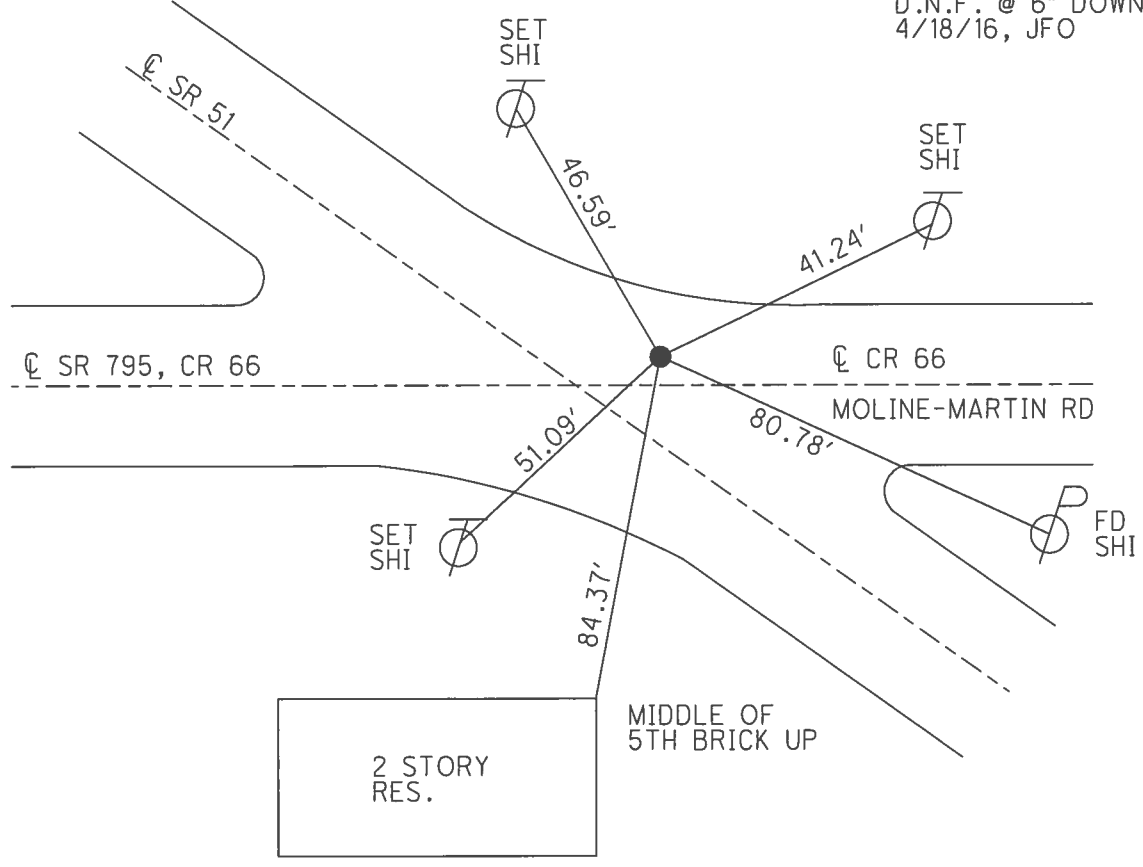
O.D.O.T. DISTRICT 2 SURVEY OFFICE (USE ONLY)

PERSONNEL	REFERENCE NO.	42	SHEET	19	OF	21
NOTES	BARNHISEL	DATE	5/20/02	ROUTE	SR 51	
H.C.	CANTERBURY	WEATHER	CLOUDY	COUNTY	OTTAWA	
R.C.	C.B.	TEMP.	50°	TOWNSHIP	CLAY	
	B.M.			SECTION	20	
				T	7	N
				R	13	E

TYPE MONUMENT P.K.NAIL  
 ON SURFACE - ~~BELOW~~ ON  
~~LEFT~~ - ☉ PAV'T - RIGHT 13.6', 3' N. OF ☉ SR 795  
- TO - EDGE PAVEMENT  
 S.L.M. 498+15  
 Grid: Northing: - Easting: -



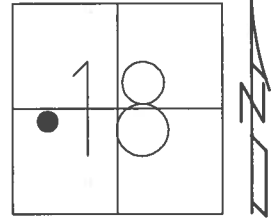
RECORD: P.I.  
 $\Delta = 00^\circ 03' 30''$  RT  
 496+95.3  
 FD R.R.SPIKE  
 1/19/72  
 SET P.K./WASHER  
 8/5/02, MB  
 D.N.F. @ 6" DOWN  
 4/18/16, JFO



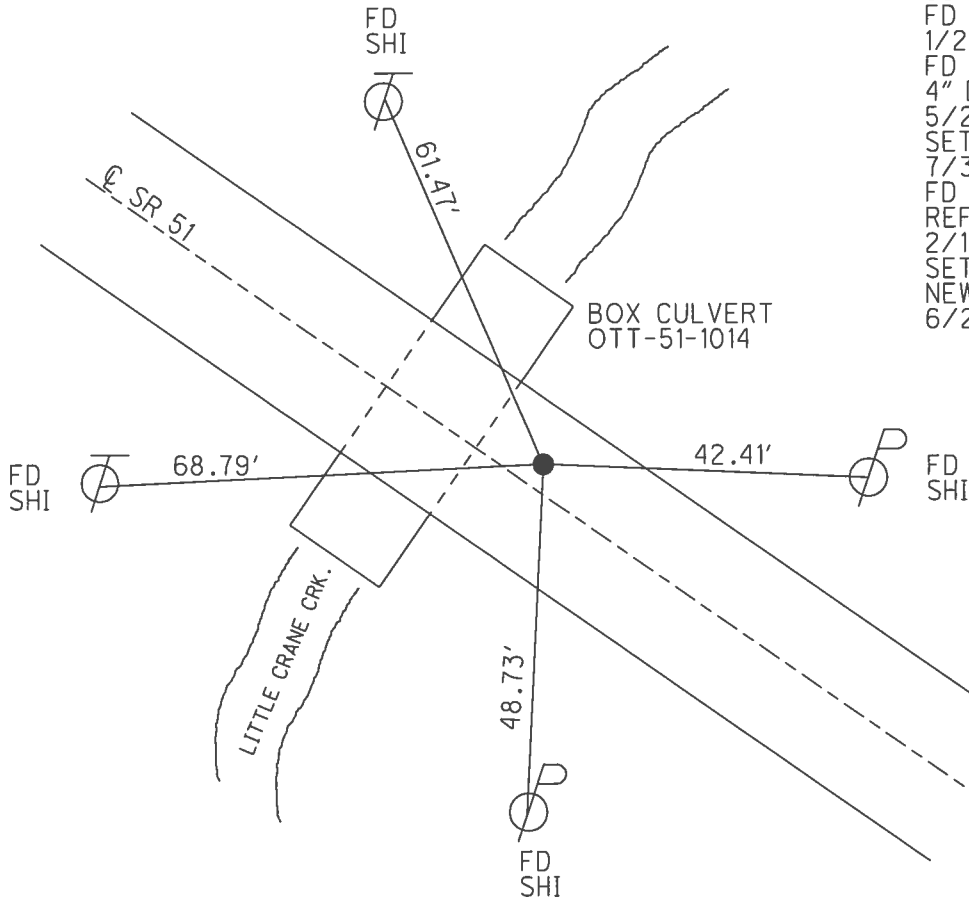
O.D.O.T. DISTRICT 2 SURVEY OFFICE (USE ONLY)

PERSONNEL \_\_\_\_\_ REFERENCE NO. 46 SHEET 20 OF 21  
 NOTES RHOADES DATE 4/18/19 ROUTE SR 51  
 H.C. O'DONNELL WEATHER SUNNY COUNTY OTTAWA  
 R.C. RHOADES TEMP. 75° TOWNSHIP ALLEN  
 \_\_\_\_\_ SECTION 18  
 \_\_\_\_\_ T 7 N R 13 E

TYPE MONUMENT P.K./WASHER  
 ON SURFACE - ~~BELOW~~ ON  
~~LEFT~~ - C PAV'T - RIGHT 7.0'  
5.1' TO RT EDGE PAVEMENT  
 S.L.M. 535+36



Grid: Northing: 693353.547 Easting: 1719081.614

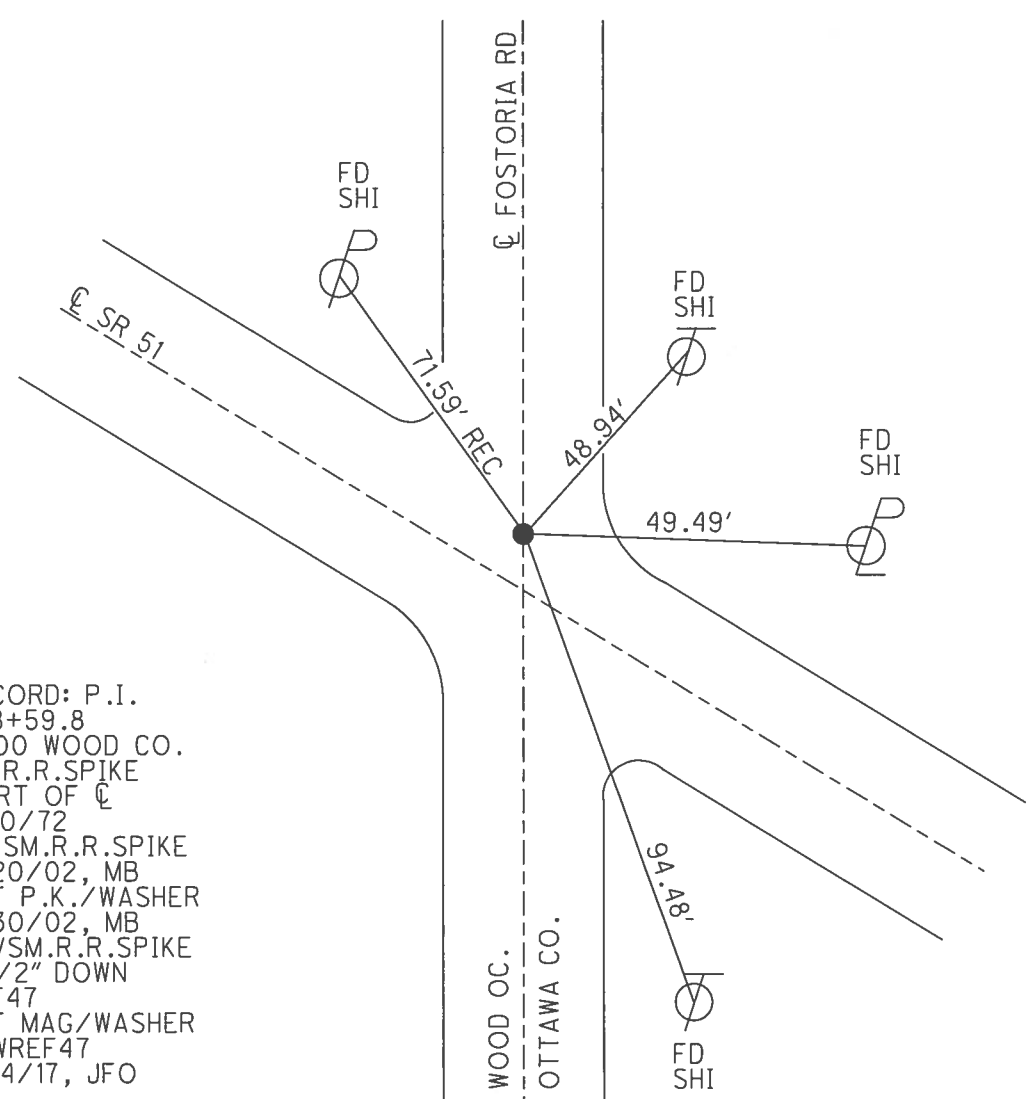
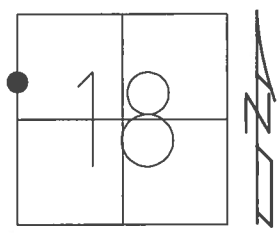


RECORD: P.I.  
 $\Delta = 0^{\circ} 08' RT$   
 534+45.5  
 FD R.R.SPIKE  
 1/20/72  
 FD P.K.NAIL  
 4" DOWN  
 5/20/02, MB  
 SET P.K./WASHER  
 7/30/02, MB  
 FD P.K./WASHER  
 REF46  
 2/16/16, JFO  
 SET MAG/WASHER  
 NEWREF46  
 6/2/17, JFO

O.D.O.T. DISTRICT 2 SURVEY OFFICE (USE ONLY)

PERSONNEL \_\_\_\_\_ REFERENCE NO. 47 SHEET 21 OF 21  
 NOTES RHOADES DATE 4/19/16 ROUTE SR 51  
 H.C. O'DONNELL WEATHER CLOUDY COUNTY OTTAWA  
 R.C. RHOADES TEMP. 50° TOWNSHIP ALLEN  
 SECTION 18  
 T 7 N R 13 E

TYPE MONUMENT SM.R.R.SPIKE  
~~ON SURFACE~~ - BELOW 3 1/2"  
~~LEFT~~ - CL PAV'T - RIGHT 4', 1' W. OF CL S.  
- TO - EDGE PAVEMENT  
 S.L.M. 549+50  
 Grid: Northing: 694306.059 Easting: 1718037.892



RECORD: P.I.  
 548+59.8  
 0+00 WOOD CO.  
 FD R.R.SPIKE  
 4' RT OF CL  
 1/20/72  
 FD SM.R.R.SPIKE  
 5/20/02, MB  
 SET P.K./WASHER  
 7/30/02, MB  
 FDVSM.R.R.SPIKE  
 3 1/2" DOWN  
 REF47  
 SET MAG/WASHER  
 NEWREF47  
 8/14/17, JFO