

O.D.O.T. DISTRICT 2 SURVEY OFFICE (USE ONLY)

PERSONNEL

REFERENCE NO. 4 A

SHEET 6 OF 7

NOTES LEU

DATE 4/26/16

ROUTE SR 51

H.C. HOMAN

WEATHER PARTLY CLOUDY

COUNTY OTTAWA

R.C. LEU

TEMP. 64°

TOWNSHIP HARRIS

SECTION 19

DWG BY NIESE

PID 94324

T 6 N R 14 E

TYPE MONUMENT MAG/WASHER

ON SURFACE - ~~BELOW~~ ON

OFFSET  $\varnothing$  PAVEMENT 41.44' LT : ~~RT~~

- TO - EDGE PAVEMENT

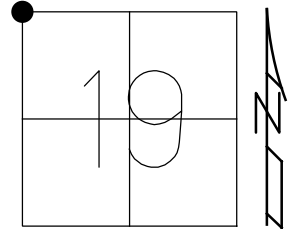
STATION: 52+47.72

HORIZ.DATUM: NAD83 2011

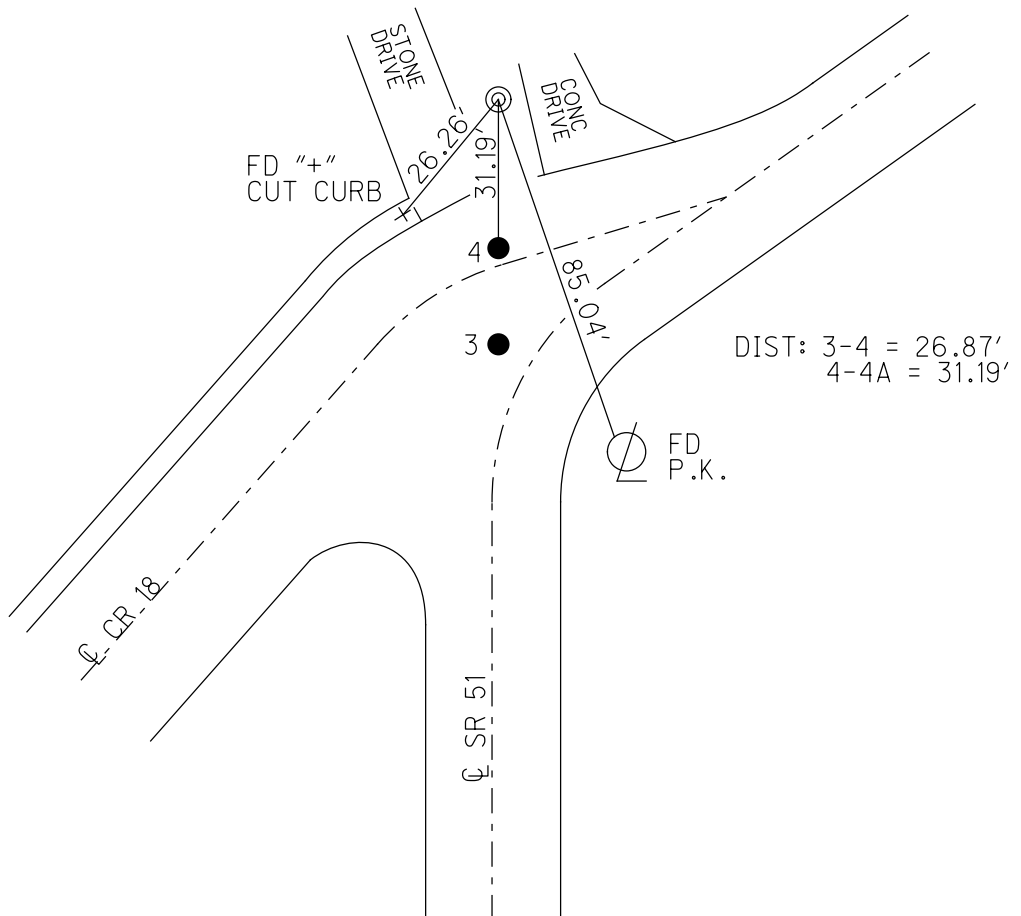
GEOID: NAVD88 2012A

GRID: NORTHING: 658817.431

EASTING: 1749329.773



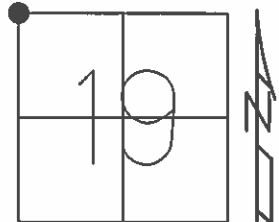
RECORD:  
 STA 52+66.45  
 FD CMON  
 4/27/15, EBW  
 FD CMON  
 NEWREFA4  
 9/30/16, DCH



O.D.O.T. DISTRICT 2 SURVEY OFFICE (USE ONLY)

PERSONNEL \_\_\_\_\_ REFERENCE NO. 4 A SHEET 6 OF 7  
 NOTES LEU DATE 04-26-16 ROUTE SR 51  
 H.C. HOMAN WEATHER PARTLY CLDY COUNTY OTTAWA  
 R.C. LEU TEMP. 64°F TOWNSHIP HARRIS  
 \_\_\_\_\_ SECTION 19  
 \_\_\_\_\_ T 6 N R 14 E

TYPE MONUMENT MAG/WASHER  
 ON SURFACE - ~~BELOW~~ ON \_\_\_\_\_  
 LEFT - ☉ PAV'T - ~~RIGHT~~ 41.44'  
 \_\_\_\_\_ TO \_\_\_\_\_ EDGE PAVEMENT  
 S.L.M. 52+47.72



Grid: Northing: 658817.4306 Easting: 1749329.773

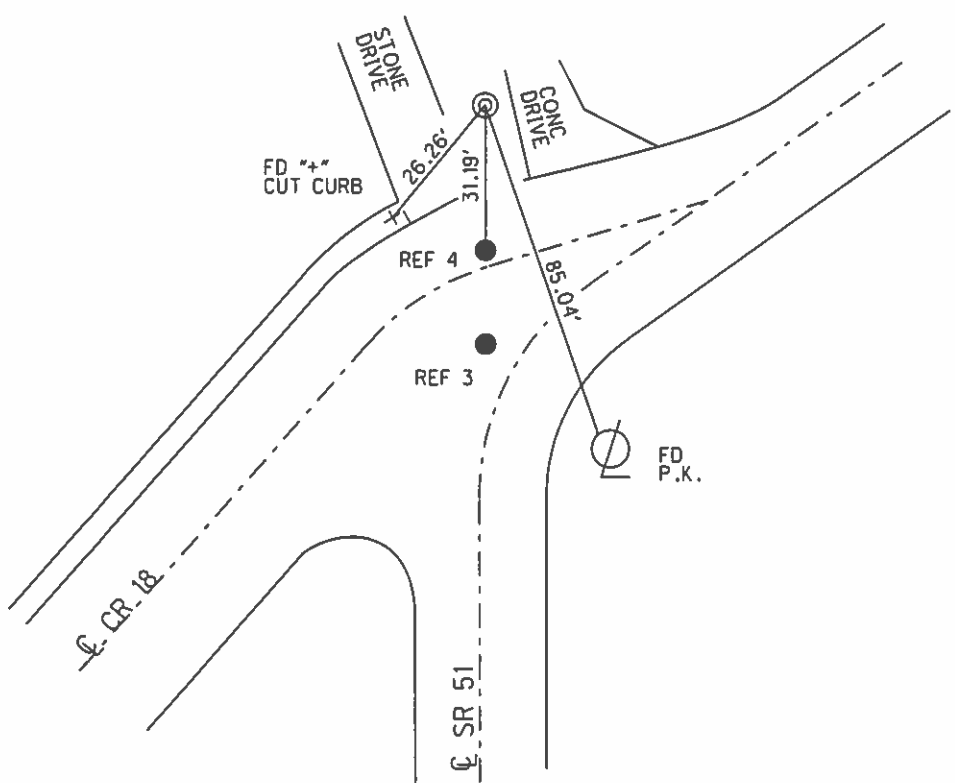
RECORD:  
 CONC MON  
 STA 52+66.45  
 NW CORNER SEC. 197

DIST: 3-4 = 26.87'  
 4-4A = 31.19'

GPS, REFA4  
 04-27-15, EBW, JLL

FD R/W MON  
 GPS, REFA4  
 04-26-16

SET MAG/WASHER  
 GPS, NEWREFA4  
 09-30-16



# O.D.O.T. DISTRICT 2 SURVEY OFFICE

PERSONNEL

REFERENCE NO. 3

SHEET 3 OF     

NOTES Cronin

H.C. Ripple

R.C. Garbour

Geyman

DATE 9/21/87

WEATHER sunny

TEMP. 63°

ROUTE 51

COUNTY Ottawa

TOWNSHIP Harris

SECTION 19

T 6 N R 14 E

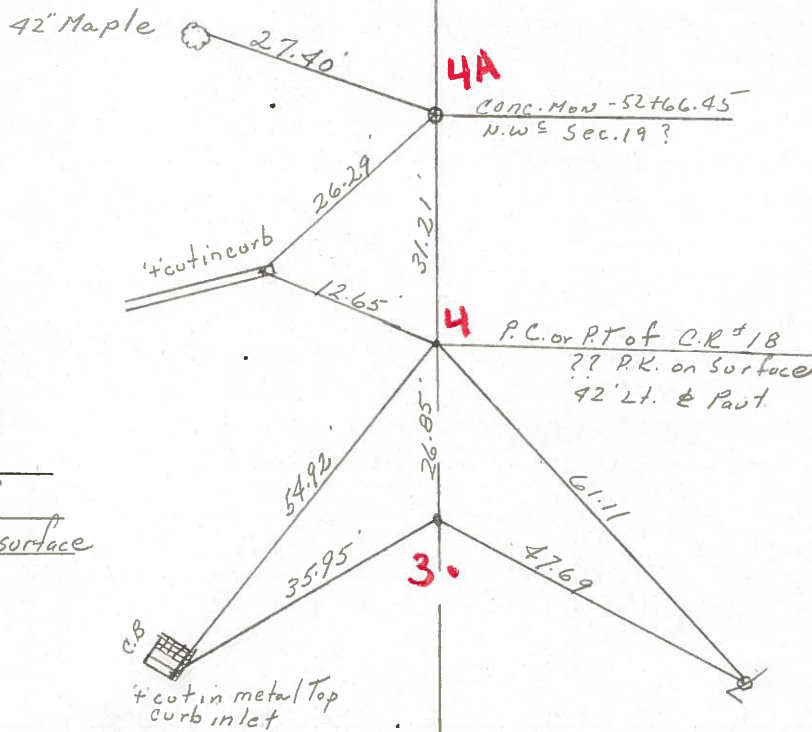
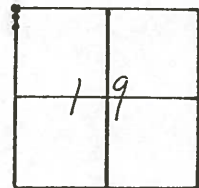
TYPE MONUMENT P.K.

ON SURFACE - BELOW on surface

LEFT - & PAV'T. - RIGHT 28' Lt. & Pavt.

TO      EDGE PAVEMENT

S.L.M. 51+98.39??



$\Delta = 45^\circ 27' 30''$  Rt.

51+98.39 P.I.??

P.K. at top P.K. below surface

\* If right Sta. on road then P.I. is 40' off.

S. R. # 51

PERSONNEL TITLE PERSONNEL TITLE

COUNTY Ottawa DATE 1-10-72

S. R. 51 WEATHER Fair

SEC. 19 & 24 TEMP. 35°

DESCRIPTION Clay & Harris Twp JOB NO. \_\_\_\_\_

LEFT CENTER LINE RIGHT

