

O.D.O.T. DISTRICT 2 SURVEY OFFICE (USE ONLY)

PERSONNEL

REFERENCE NO. 5

SHEET 7 OF 7

NOTES LEU
 H.C. HOMAN
 R.C. LEU

DATE 4/26/16
 WEATHER PARTLY CLOUDY
 TEMP. 62°

ROUTE SR 51
 COUNTY OTTAWA
 TOWNSHIP HARRIS
 SECTION 19
 T 6 N R 14 E

DWG BY NIESE PID 94324

TYPE MONUMENT MAG/WASHER

ON SURFACE - ~~BELOW~~ ON

OFFSET \odot PAVEMENT 5.0' LT : ~~RT~~

- TO - EDGE PAVEMENT

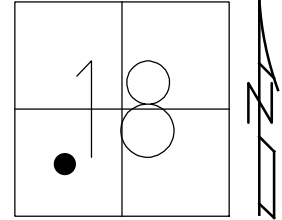
STATION: 71+26.42

HORZ.DATUM: NAD83 2011

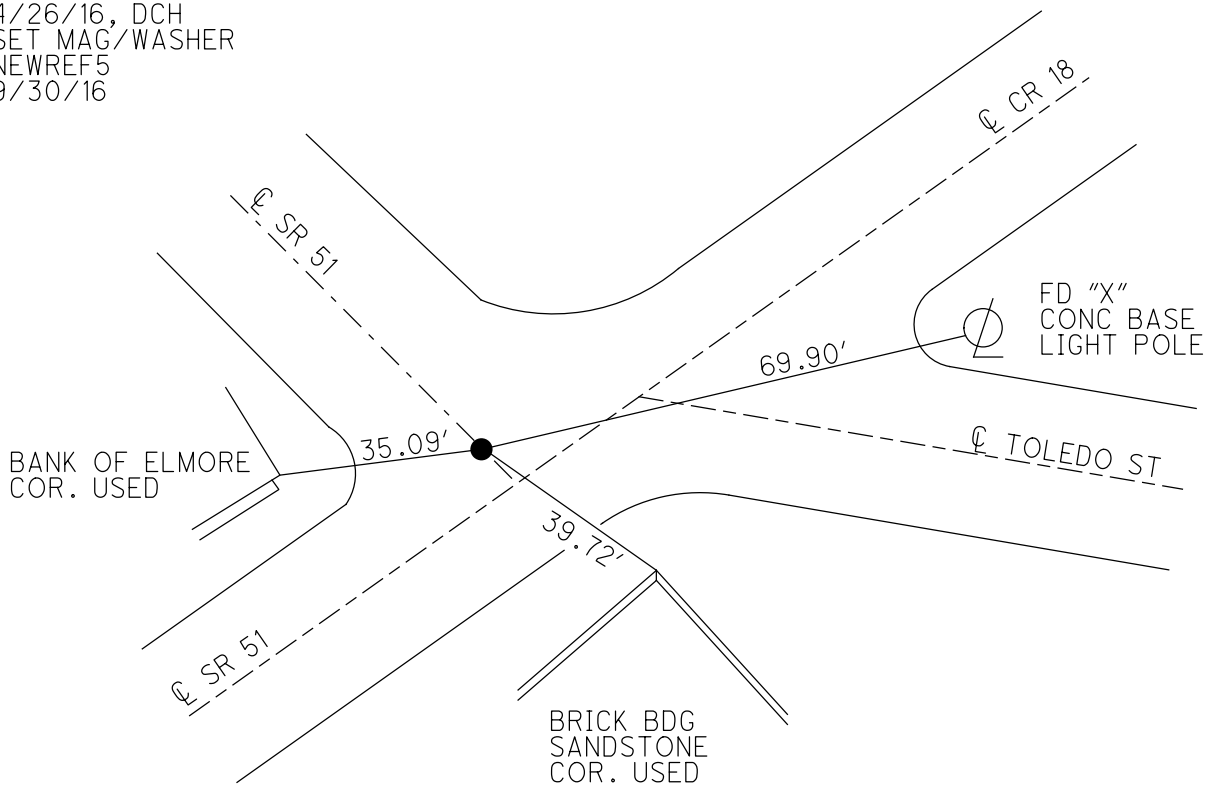
GEOID: NAVD88 2012A

GRID: NORTHING: 660104.037

EASTING: 1750699.488



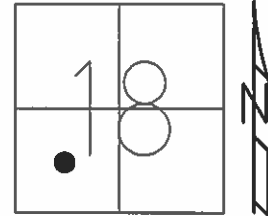
RECORD: P.I.
 STA. 71+06.64
 FD P.K.NAIL
 ATOP P.K.NAIL
 FD P.K./WASHER
 9/21/87, JLR
 4/23/15, EBW
 FD MAG/WASHER
 4/26/16, DCH
 SET MAG/WASHER
 NEWREF5
 9/30/16



O.D.O.T. DISTRICT 2 SURVEY OFFICE (USE ONLY)

PERSONNEL _____ REFERENCE NO. 5 SHEET 7 OF 7
 NOTES LEU DATE 04-26-16 ROUTE SR 51
 H.C. HOMAN WEATHER PARTLY CLDY COUNTY OTTAWA
 R.C. LEU TEMP. 62°F TOWNSHIP HARRIS
 _____ SECTION 19
 _____ T 6 N R 14 E

TYPE MONUMENT MAG/WASHER
 ON SURFACE - ~~BELOW~~ ON
 LEFT - ☉ PAV'T - ~~RIGHT~~ 5'
- TO - EDGE PAVEMENT
 S.L.M. 71+26.42
 Grid: Northing: 660104.0373 Easting: 1750699.488

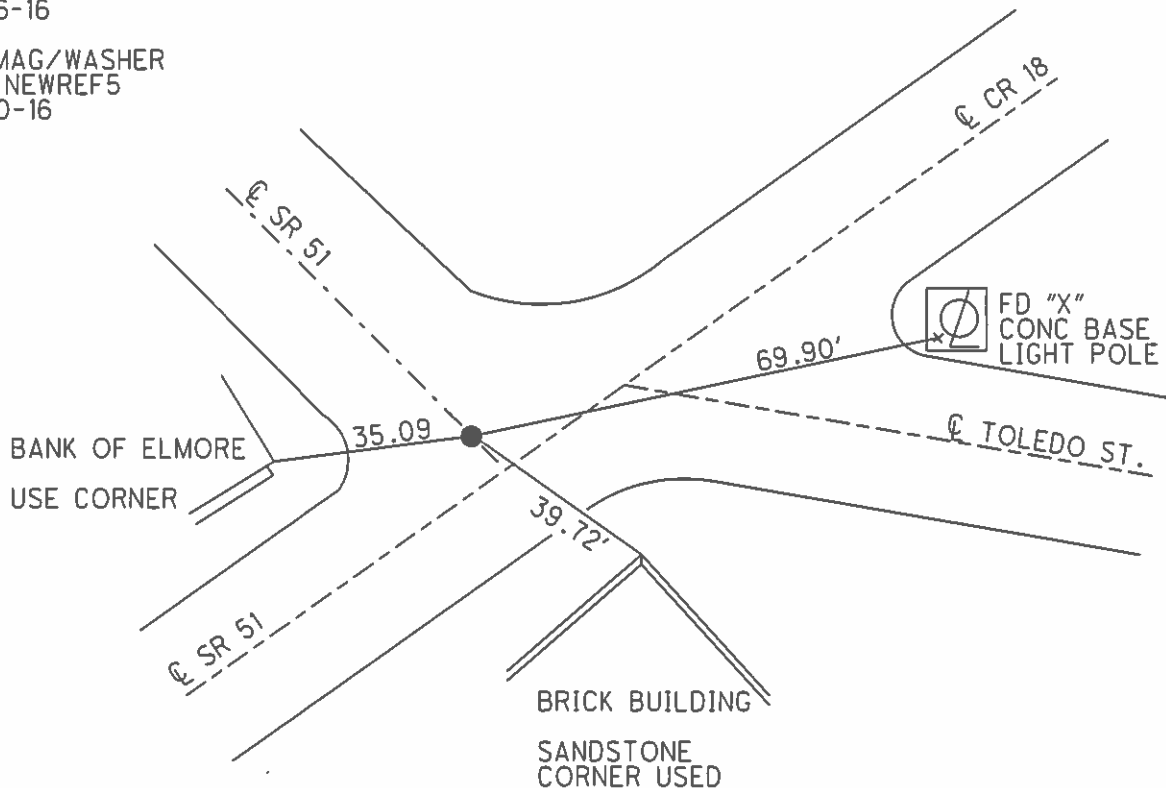


RECORD:
 P1
 71+06.64
 PK ATOP
 PK BELOW SURFACE

GPS, REF5
 04-23-15, EBW, JLL

MAG/WASHER
 GPS, REF5
 04-26-16

SET MAG/WASHER
 GPS, NEWREF5
 09-30-16



O.D.O.T. DISTRICT 2 SURVEY OFFICE

PERSONNEL

REFERENCE NO. 5

SHEET 4 OF

NOTES Cronin

H.C. Ripple

R.C. Barbour

Geyman

DATE 9/21/87

WEATHER cloudy

TEMP. 65°

ROUTE 51

COUNTY Ottawa

TOWNSHIP Harris

SECTION 18

T 6 N R 14 E

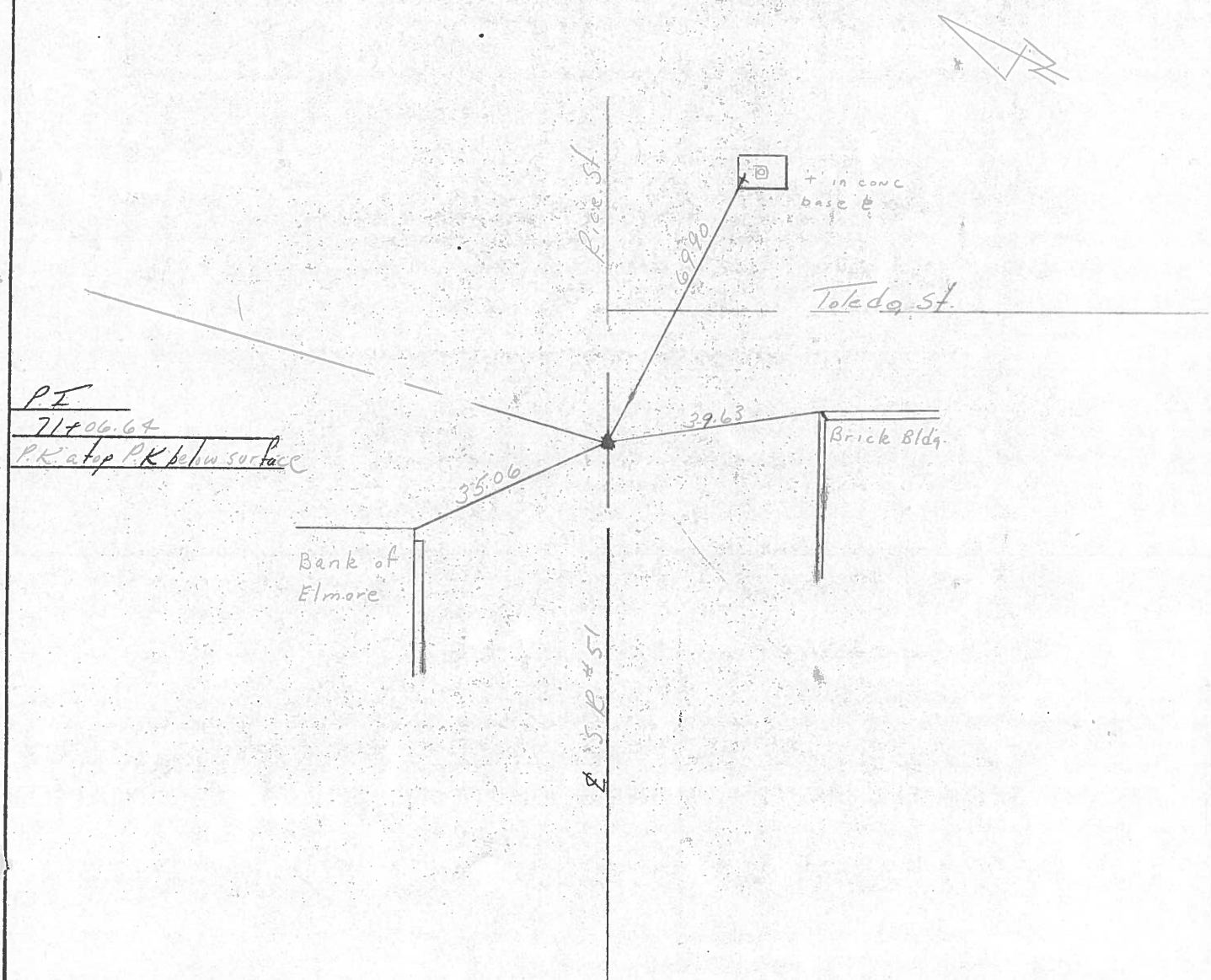
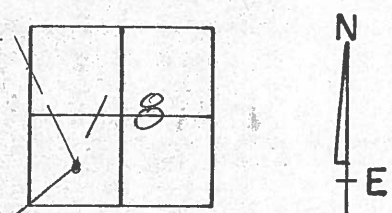
TYPE MONUMENT PK & wash

ON SURFACE - BELOW on surface

LEFT - & PAV'T. - RIGHT 5' Lt & Pavt.

TO EDGE PAVEMENT

S.L.M. 71+06.64



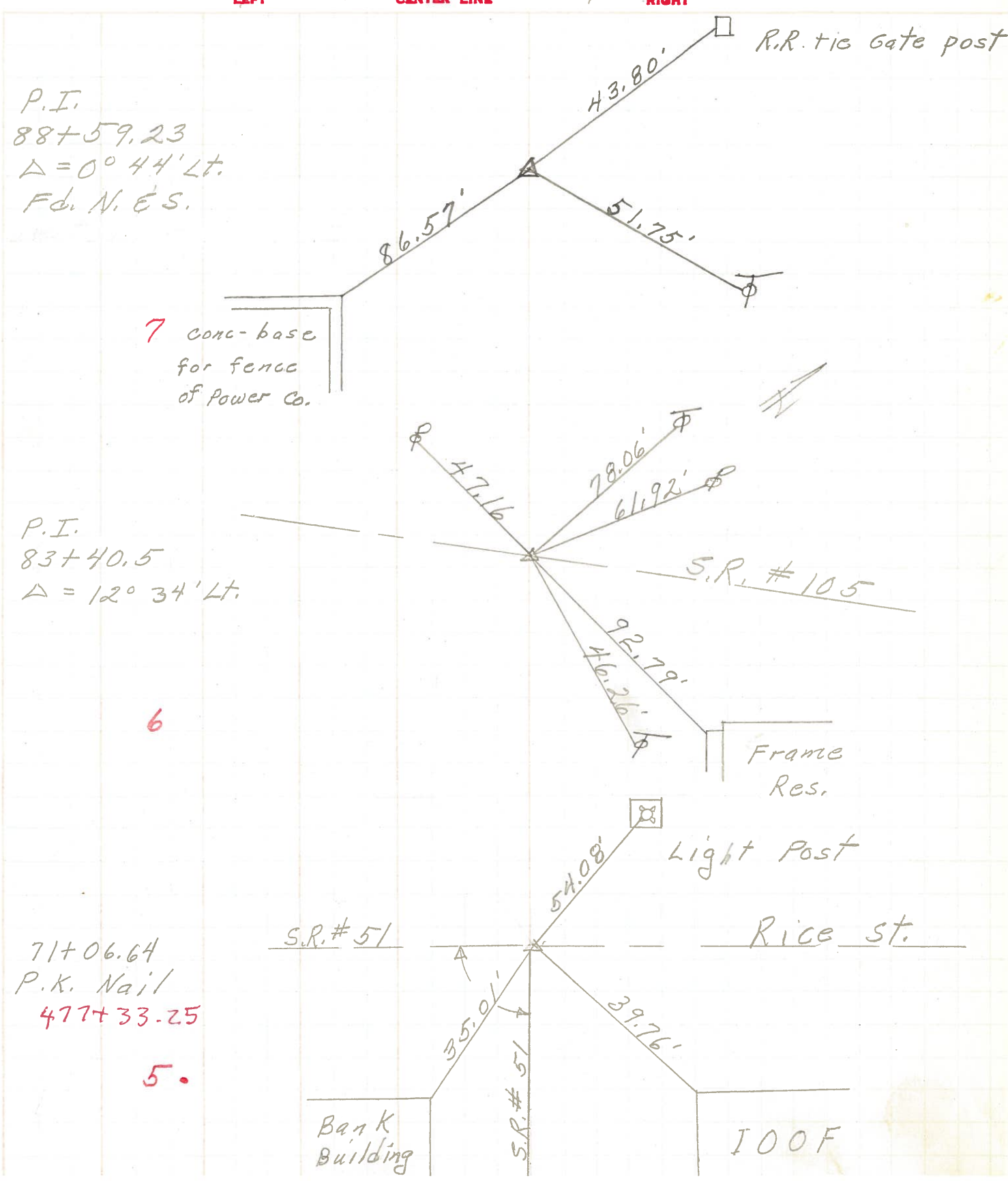
| PERSONNEL | TITLE | PERSONNEL | TITLE |
|-----------|-------|-----------|-------|
| | | | |
| | | | |
| | | | |

COUNTY Ottawa DATE 1-10-72

S. R. 51 WEATHER Cloudy

SEC. E/more-west TEMP. 35°

DESCRIPTION Clay Twp. & Harris Twp JOB NO. _____



P.I.
88+59.23
Δ = 0° 44' Lt.
Fd. N. E.S.

7 conc-base
for fence
of Power Co.

P.I.
83+40.5
Δ = 12° 34' Lt.

6

Frame
Res.

Light Post

S.R. # 51

Rice St.

71+06.64
P.K. Nail
477+33.25

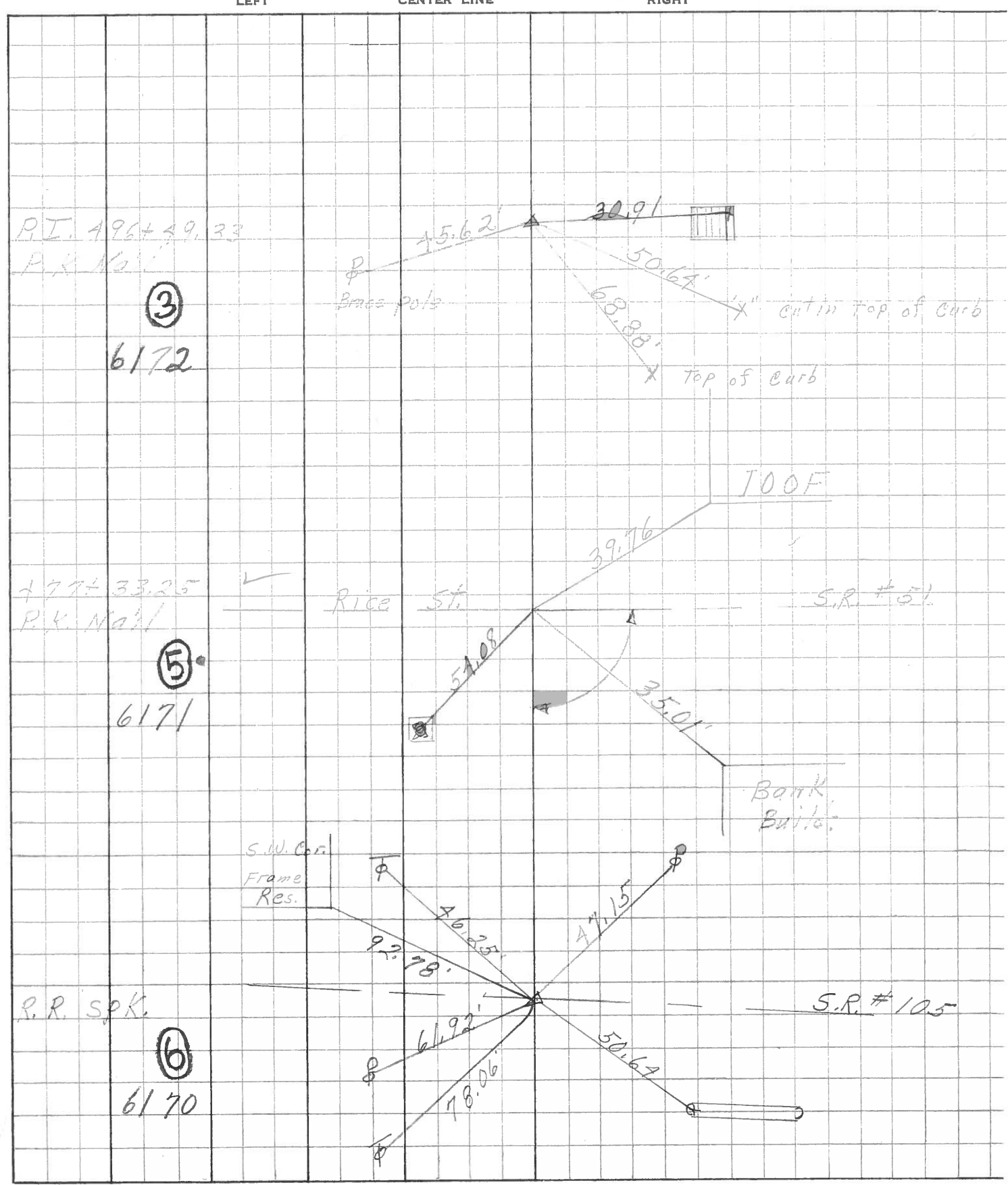
5.

Bank
Building

100F

| PERSONNEL | TITLE | PERSONNEL | TITLE | COUNTY | DATE | WEATHER | TEMP. |
|-----------|-------|-----------|-------|--------------------------|---------|---------|-------|
| Schneider | | Potts | | Ottawa | 7-10-68 | Fair | 75° |
| Mosser | | | | S. R. 51 | | | |
| Barbour | | | | SEC. Wood Co Line - East | | | |
| Redding | | | | | | | |

DESCRIPTION Ties for Control Points JOB NO. _____



P.I. 196+39.33
P.R. Nail
③
6172

477+33.25
P.R. Nail
⑤
6171

P.R. SpK.
⑥
6170

