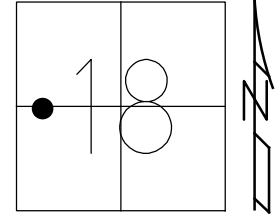


O.D.O.T. DISTRICT 2 SURVEY OFFICE (USE ONLY)

PERSONNEL _____ REFERENCE NO. 6 SHEET 1 OF 18
 NOTES BALBAUGH DATE 4/15/20 ROUTE SR 51
 H.C. LEU WEATHER CLOUDY COUNTY OTTAWA
 R.C. BALBAUGH TEMP. 39° TOWNSHIP HARRIS
 SECTION 18
 DWG BY NIESE PID 94324 T 6 N R 14 E

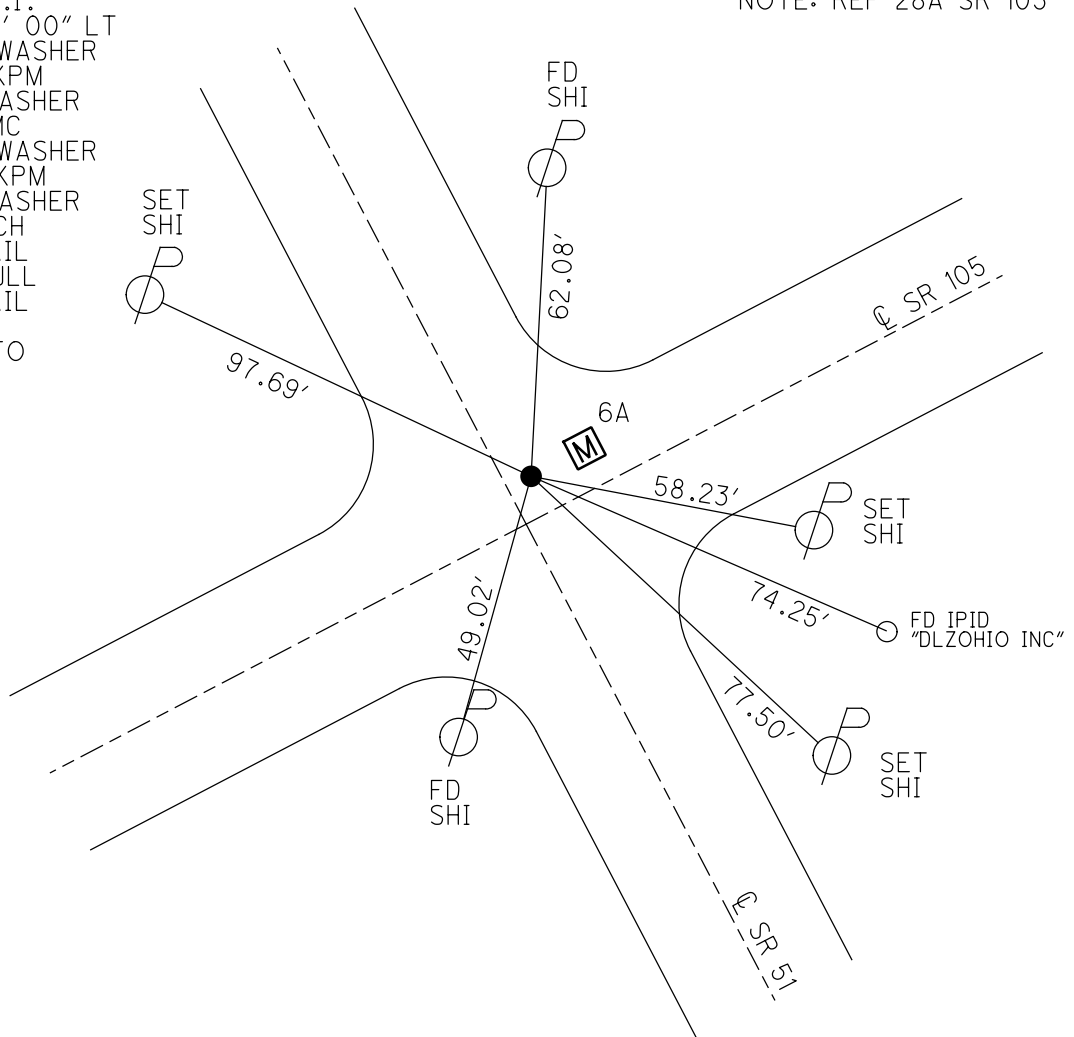
TYPE MONUMENT MAG NAIL
 ON SURFACE - ~~BELOW~~ ON
 OFFSET \odot PAVEMENT 2.1' LT : RT
- TO - EDGE PAVEMENT
 STATION: 83+32.54



HORZ. DATUM: NAD83 2011 GEOID: NAVD88 2012A
 GRID: NORTHING: 661233.235 EASTING: 1750275.579

RECORD: P.I.
 $\Delta = 12^{\circ} 34' 00''$ LT
 SET P.K./WASHER
 6/21/94, KPM
 FD P.K./WASHER
 4/3/00, MC
 SET P.K./WASHER
 6/21/00, KPM
 FD P.K./WASHER
 5/7/13, DCH
 FD MAG NAIL
 4/29/15, JLL
 FD MAG NAIL
 REFA28
 4/5/18, JFO

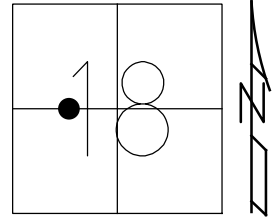
NOTE: REF 28A SR 105



O.D.O.T. DISTRICT 2 SURVEY OFFICE (USE ONLY)

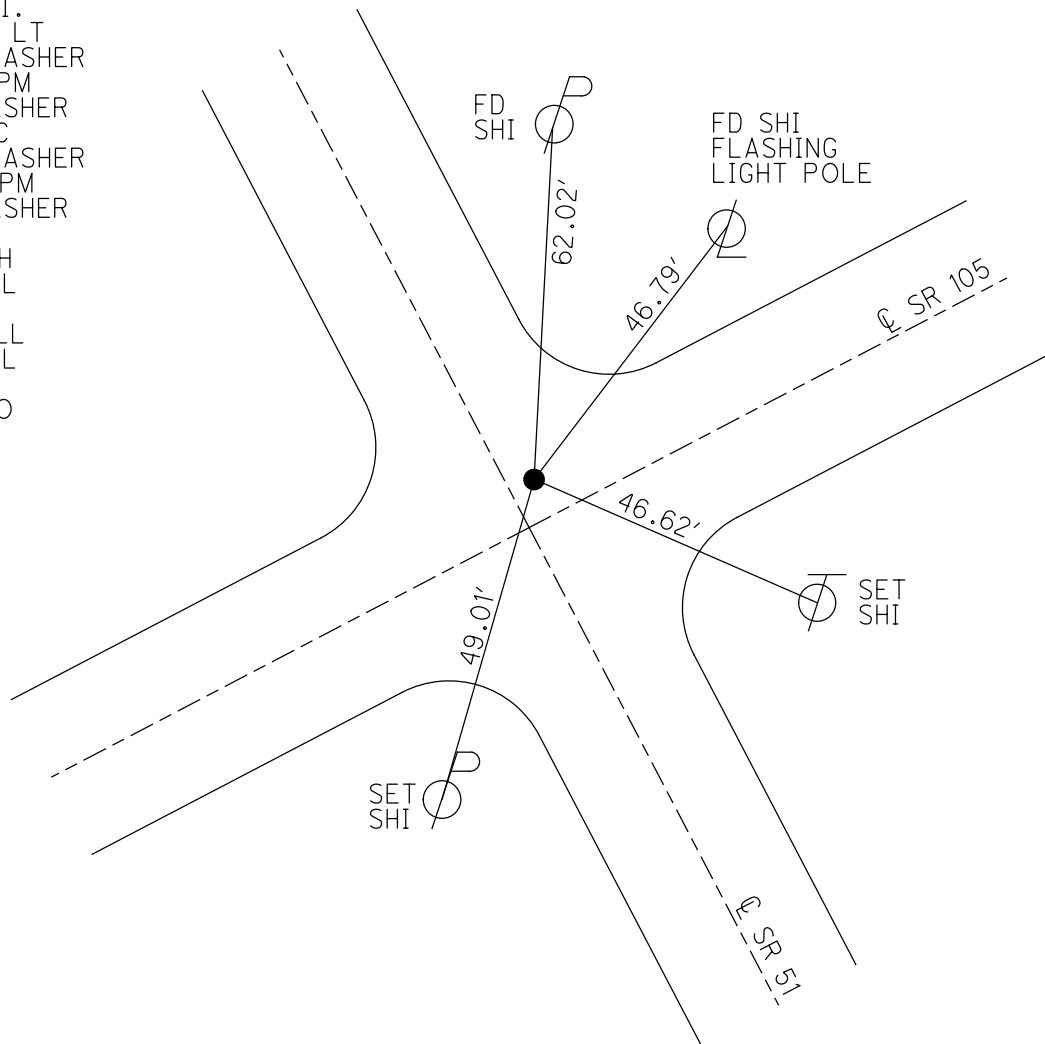
PERSONNEL _____ REFERENCE NO. 6 SHEET 1 OF 16
 NOTES MOSER DATE 4/3/00 ROUTE SR 51
 H.C. CANTERBURY WEATHER SUNNY COUNTY OTTAWA
 R.C. LUCE TEMP. 50° TOWNSHIP HARRIS
 SECTION 18
 T 6 N R 14 E

TYPE MONUMENT P.K./WASHER
 ON SURFACE - ~~BELOW~~ ON
~~LEFT~~ - ☉ PAV'T - RIGHT 2.5', 4' LT ☉ SR 105
- TO - EDGE PAVEMENT
 S.L.M. 83+32.57
 Grid: Northing: 661233.171 Easting: 1750275.571



NOTE: REF 28A SR 105

RECORD: P.I.
 $\Delta = 12^\circ 34' \text{ LT}$
 SET P.K./WASHER
 6/21/94, KPM
 FD P.K./WASHER
 4/3/00, MC
 SET P.K./WASHER
 6/21/00, KPM
 FD P.K./WASHER
 OTTREF31
 5/7/13, DCH
 FD MAG NAIL
 REF6
 4/29/15, JLL
 FD MAG NAIL
 REFA28
 4/5/18, JFO



O.D.O.T. DISTRICT 2 SURVEY OFFICE (USE ONLY)

PERSONNEL _____ REFERENCE NO. 6 SHEET 1 OF 16

NOTES MOSER DATE 4/3/00 ROUTE SR 51
 H.C. CANTERBURY WEATHER SUNNY COUNTY OTTAWA
 R.C. LUCE TEMP. 50° TOWNSHIP HARRIS
 SECTION 18
 T 6 N R 14 E

TYPE MONUMENT P.K./WASHER

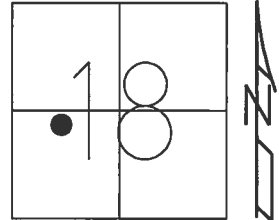
ON SURFACE - ~~BELOW~~ ON _____

~~LEFT~~ - ☉ PAV'T - RIGHT 2.5', 4' LT ☉ SR 105

- TO - EDGE PAVEMENT

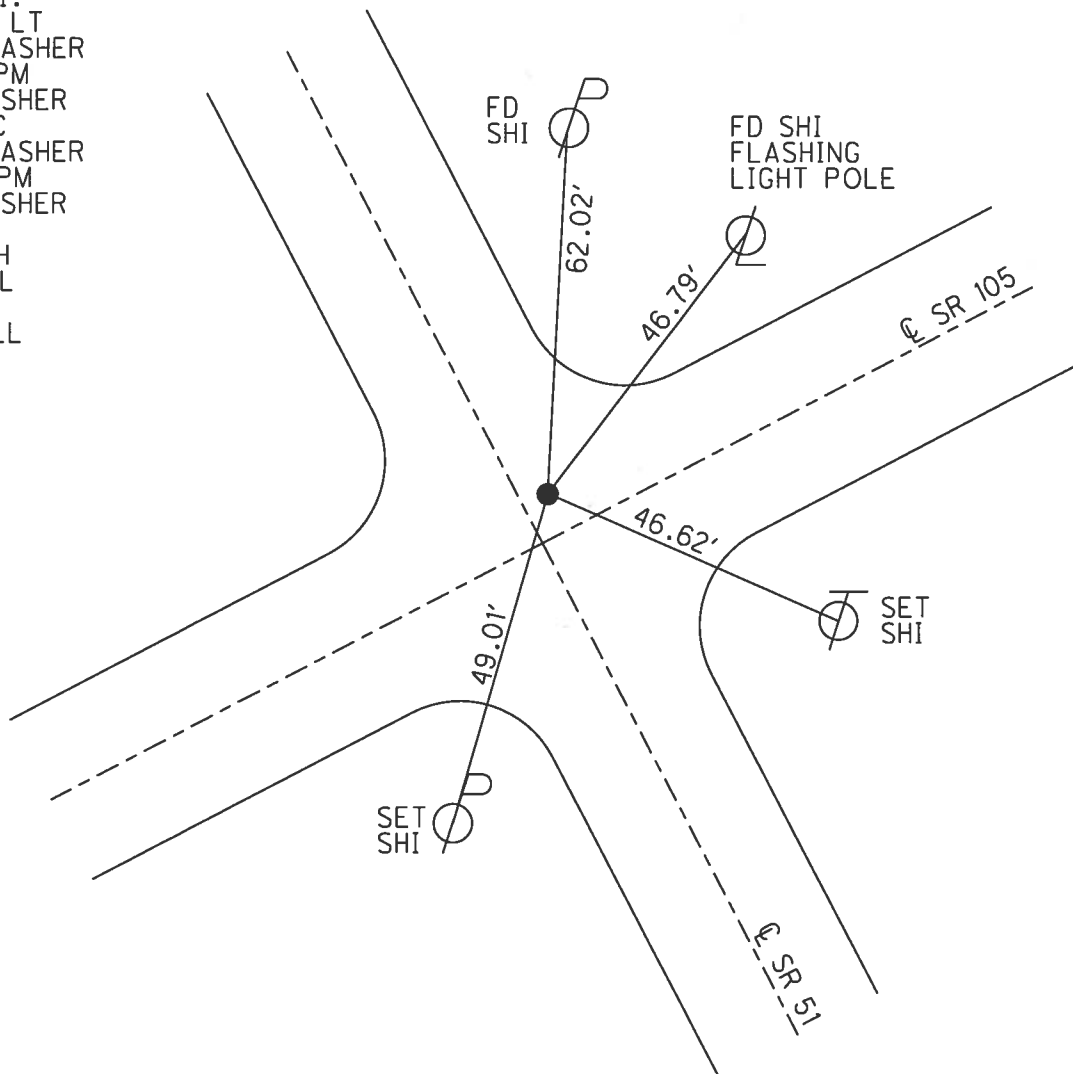
S.L.M. 83+32.57

Grid: Northing: 661233.163 Easting: 1750275.531



NOTE: REF 28A SR 105

RECORD: P.I.
 $\Delta = 12^\circ 34' \text{ LT}$
 SET P.K./WASHER
 6/21/94, KPM
 FD P.K./WASHER
 4/3/00, MC
 SET P.K./WASHER
 6/21/00, KPM
 FD P.K./WASHER
 OTTREF 31
 5/7/13, DCH
 FD MAG NAIL
 REF 6
 4/29/15, JLL



O.D.O.T. DISTRICT 2 SURVEY OFFICE

PERSONNEL

NOTES K. MOSER

H.C. M. CANTERBURY

R.C. B. LUCE

REFERENCE NO. 6 SR51 SHEET 1 OF 96
28-A SR105

DATE 4-3-00

WEATHER SUNNY

TEMP. +50°F

ROUTE S.R. 51 & 105

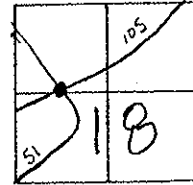
COUNTY OTTAWA

TOWNSHIP HARRIS

SECTION 18

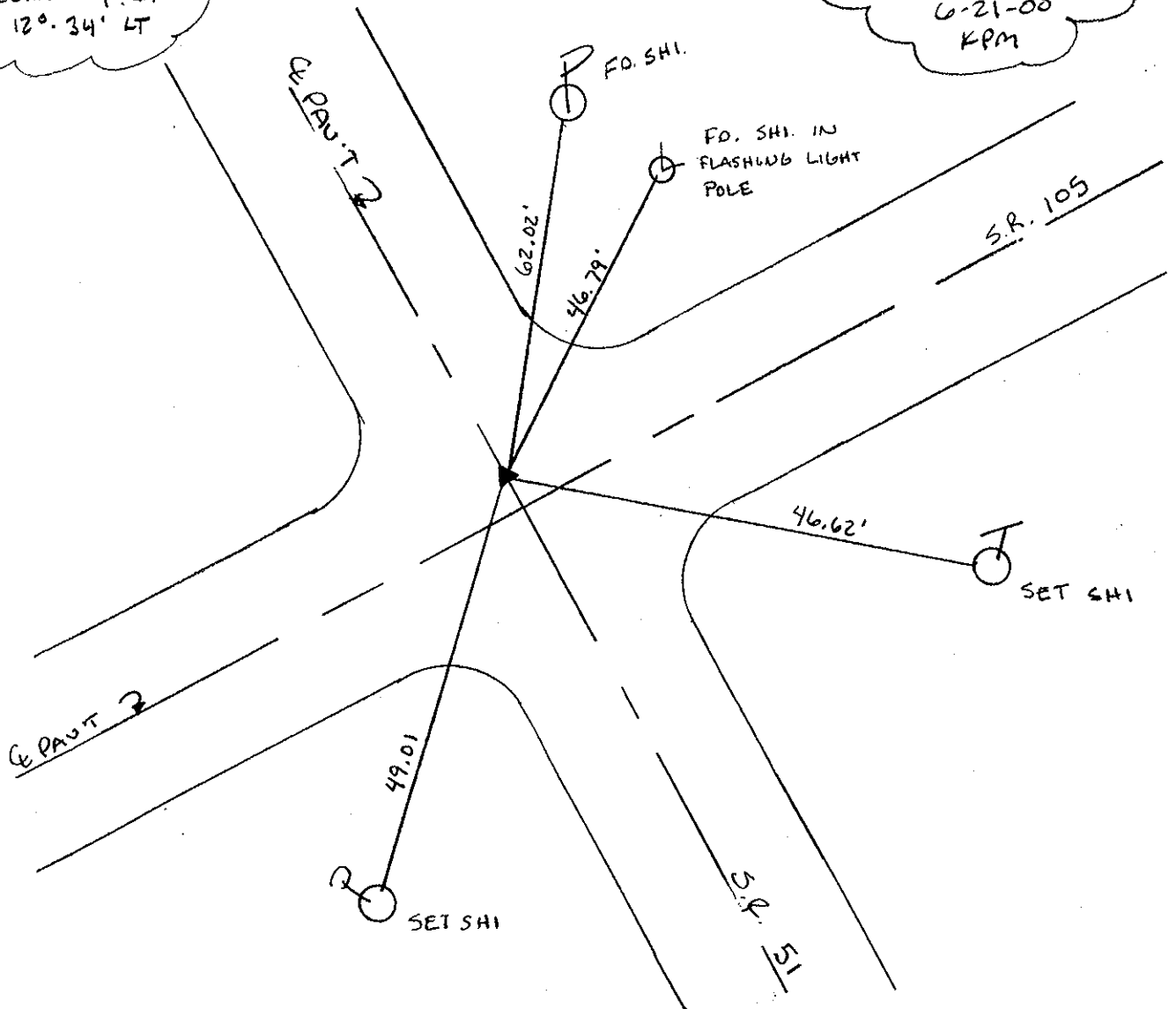
T6 N R 14 E

TYPE MONUMENT PK / WASHER
ON SURFACE - ~~BELOW~~ SURFACE
LEFT - E PAV'T. - RIGHT 4.0' LT. SR 105 + 2.5' RT. SR 51
TO EDGE PAVEMENT
S.L.M. 83+75 S.R. 51 ~ 143+08.8 S.R. 105



RECORD: P.I.
 $\Delta = 120.34' \text{ LT}$

RESET PK/WASHER
6-21-00
KPM



Resurveyed 2000

O.D.O.T. DISTRICT 2 SURVEY OFFICE

PERSONNEL

REFERENCE NO. 6

SHEET 5 OF

NOTES Cronin

H.C. Ripple

R.C. Garbour

Geyman

DATE 9/21/87

WEATHER cloudy

TEMP. 65°

ROUTE 51

COUNTY Ottawa

TOWNSHIP Harris

SECTION 18

T C N R 1 4 E

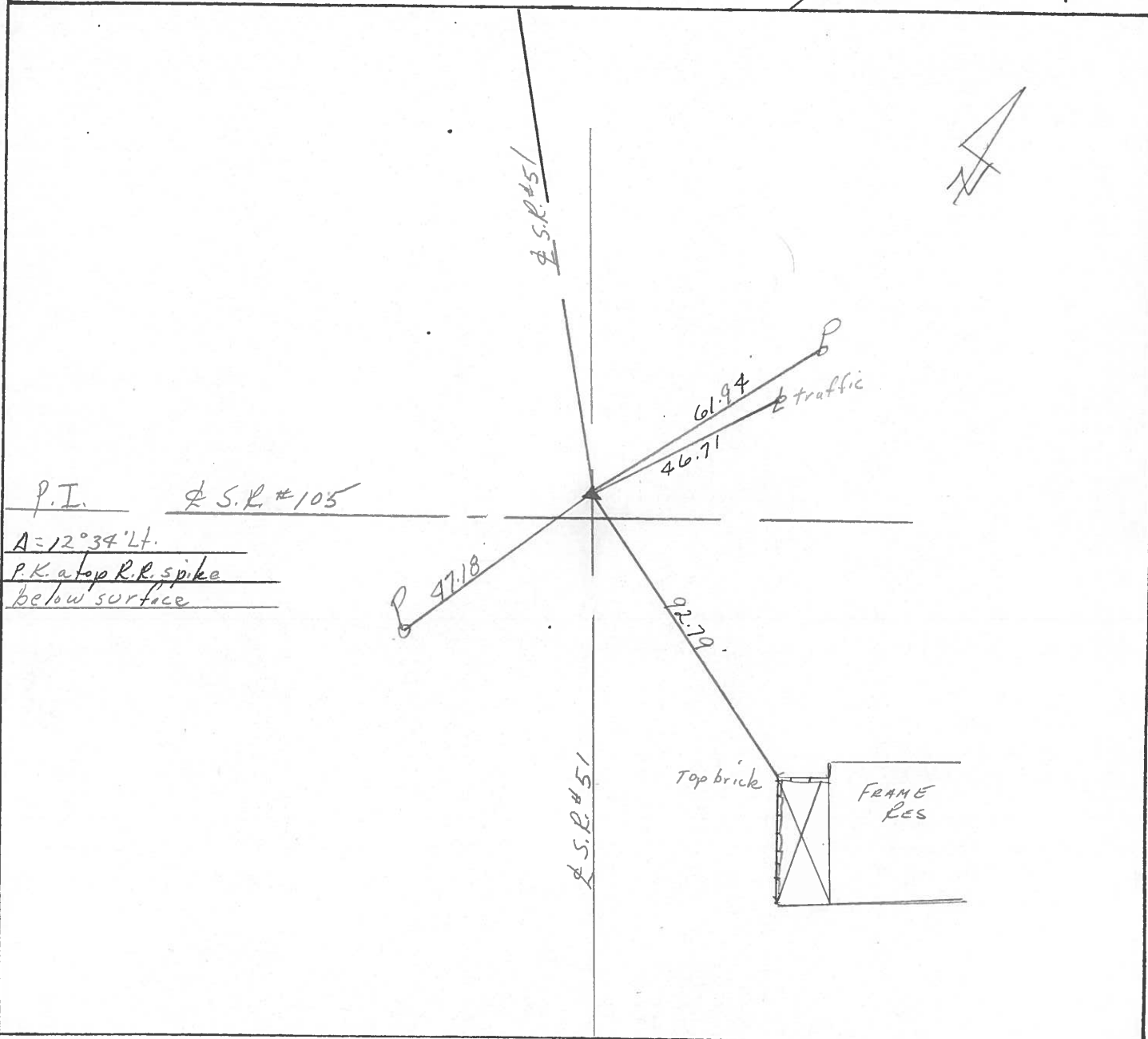
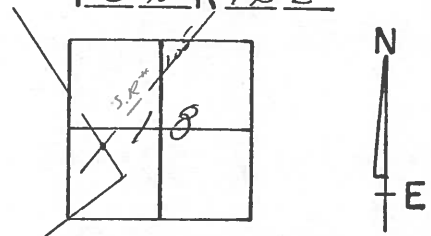
TYPE MONUMENT P.K. Washer

ON SURFACE - BELOW on surface

LEFT - € PAV'T. - RIGHT 2.5 ft. & Pav't.

 TO EDGE PAVEMENT

S.L.M. 83+40.50



PERSONNEL	TITLE	PERSONNEL	TITLE	COUNTY	DATE	WEATHER	TEMP.
Schneider		Potts		Ottawa	7-10-68	Fair	75°
Mosser				S. R. 51			
Barbour				SEC. Wood Co Line - East			
Redding							

DESCRIPTION: Ties for Control Points

