

O.D.O.T. DISTRICT 2 SURVEY OFFICE (USE ONLY)

PERSONNEL

REFERENCE NO. 9

SHEET 5 OF 18

NOTES BALBAUGH

DATE 4/15/20

ROUTE SR 51

H.C. LEU

WEATHER CLOUDY

COUNTY OTTAWA

R.C. BALBAUGH

TEMP. 39°

TOWNSHIP HARRIS

SECTION 13

DWG BY NIESE

PID 94324

T 6 N R 13 E

TYPE MONUMENT P.K. NAIL

ON SURFACE - ~~BELOW~~ ON

OFFSET 12.2' TO RT PAVEMENT 0.4' LT : ~~RT~~

12.2' TO RT EDGE PAVEMENT

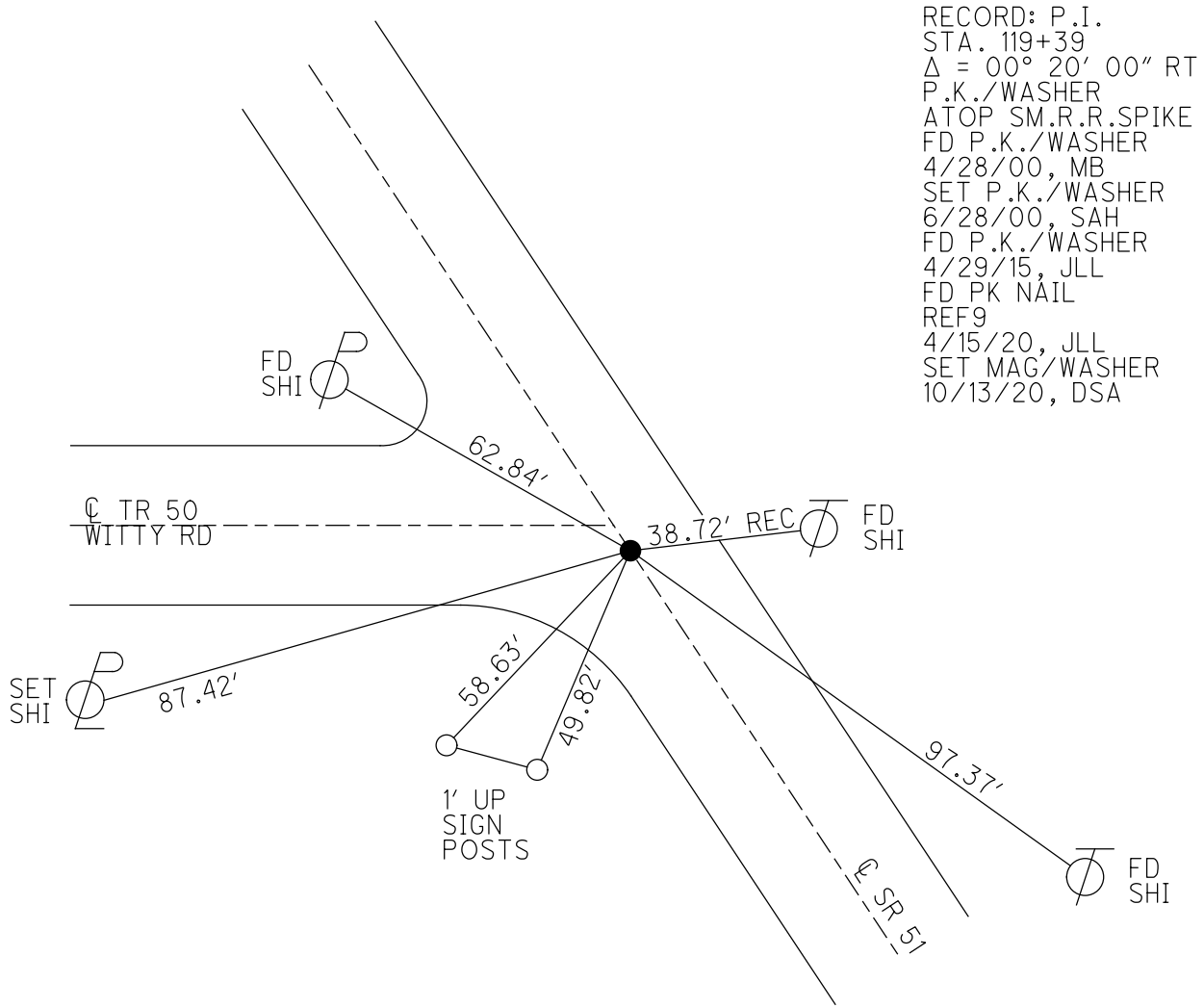
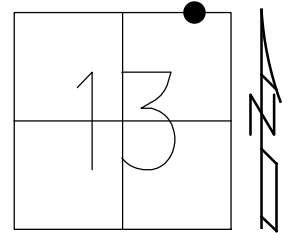
STATION: 118+89.18

HORZ.DATUM: NAD83 2011

GEOID: NAVD88 2012A

GRID: NORTHING: 664227.554

EASTING: 1748356.670



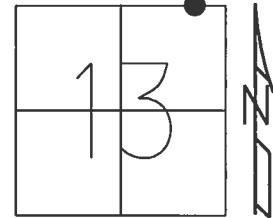
RECORD: P.I.
 STA. 119+39
 $\Delta = 00^\circ 20' 00''$ RT
 P.K./WASHER
 ATOP SM.R.R.SPIKE
 FD P.K./WASHER
 4/28/00, MB
 SET P.K./WASHER
 6/28/00, SAH
 FD P.K./WASHER
 4/29/15, JLL
 FD PK NAIL
 REF9
 4/15/20, JLL
 SET MAG/WASHER
 10/13/20, DSA

O.D.O.T. DISTRICT 2 SURVEY OFFICE (USE ONLY)

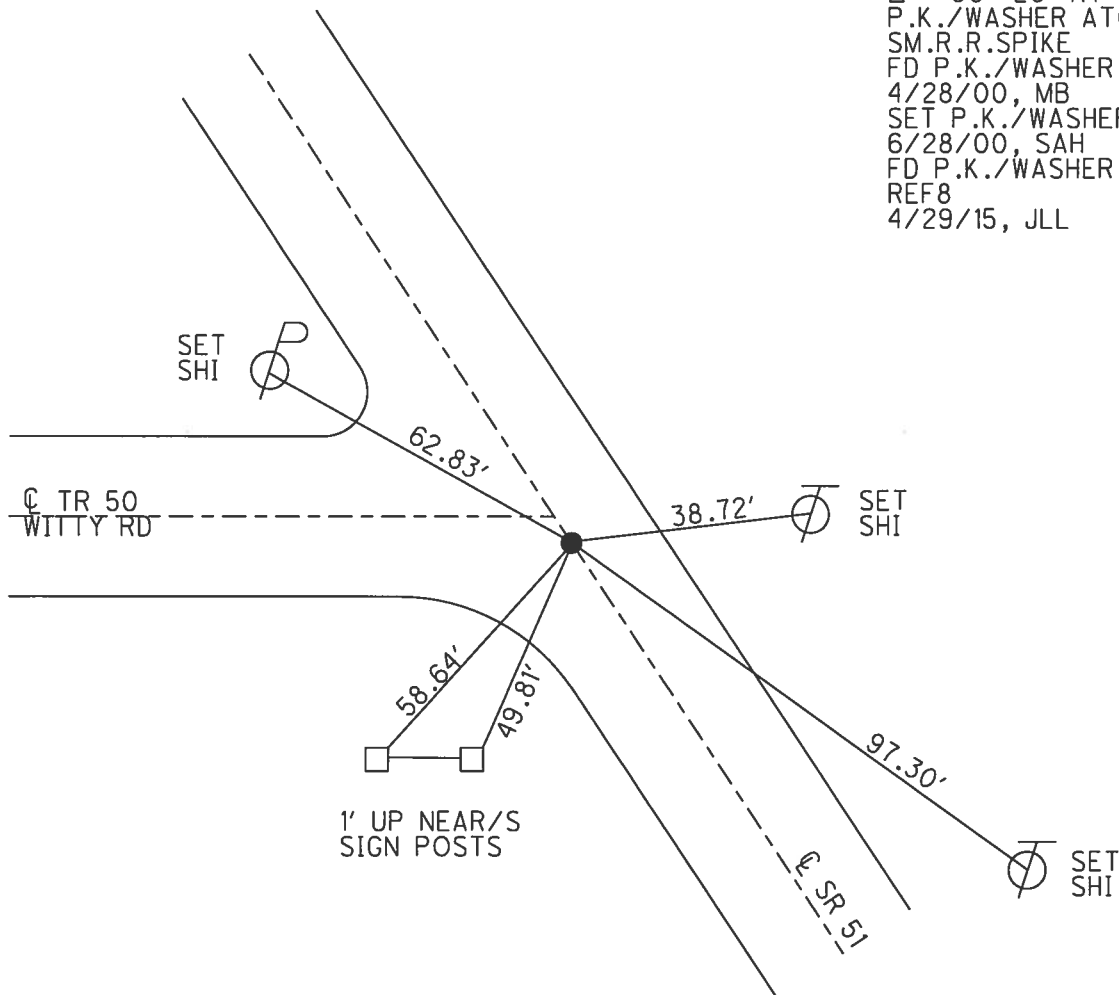
PERSONNEL _____ REFERENCE NO. 9 SHEET 3 OF 16
 NOTES BARNHISEL DATE 4/28/00 ROUTE SR 51
 H.C. CANTERBURY WEATHER SUNNY COUNTY OTTAWA
 R.C. MOSER TEMP. 55° TOWNSHIP HARRIS
HOMAN SECTION 13
 T 6 N R 14 E

TYPE MONUMENT P.K./WASHER
 ON SURFACE - ~~BELOW~~ ON
 LEFT - ☉ PAV'T - RIGHT ON, 4' S OF ☉ W
12.2' TO RT EDGE PAVEMENT
 S.L.M. 118+89.18

Grid: Northing: 664227.548 Easting: 1748356.655



RECORD: P.I.
 $\Delta = 00^\circ 20' RT$
 P.K./WASHER ATOP
 SM.R.R.SPIKE
 FD P.K./WASHER
 4/28/00, MB
 SET P.K./WASHER
 6/28/00, SAH
 FD P.K./WASHER
 REF8
 4/29/15, JLL



O.D.O.T. DISTRICT 2 SURVEY OFFICE

PERSONNEL _____

REFERENCE NO. 9

SHEET 3 OF 17

NOTES Barnhisel

H.C. Canterbury

R.C. Moser

DATE 4-28-00

WEATHER Sunny

TEMP. 55°

ROUTE 51

COUNTY OTTAWA

TOWNSHIP HARRIS

SECTION 13

T. 6 N. R. 14 E.

DRAWN BY - HOMAN

TYPE MONUMENT P.K. & WASHER

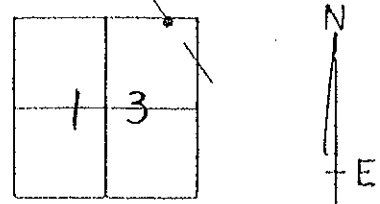
ON SURFACE - BELOW Yes

LEFT - 0 PAV'T. - RIGHT Yes

12.2 TO Rt EDGE PAVEMENT

S.L.M. 119+39

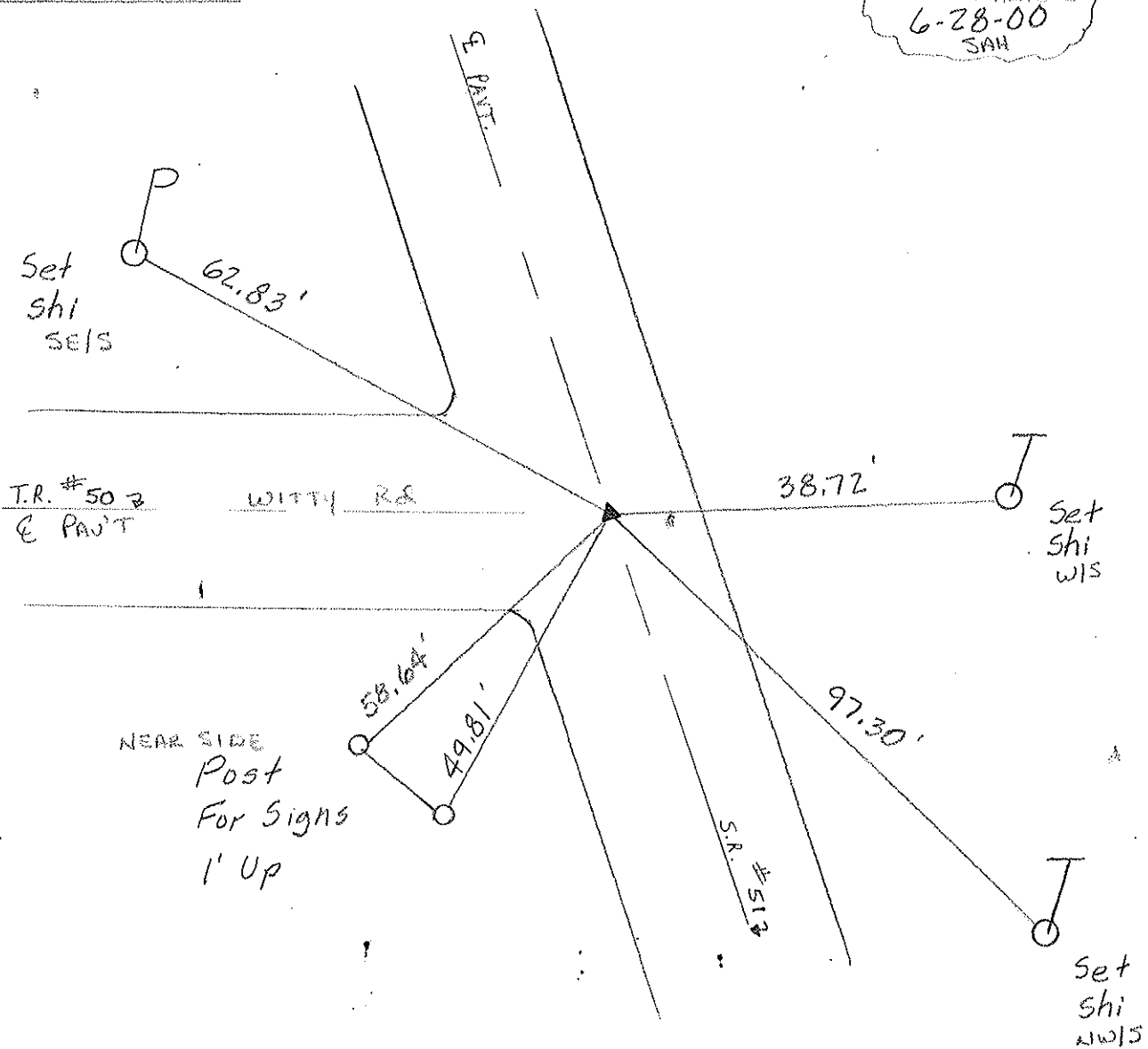
4' S. OF E WEST



RECORD: P.I. $\Delta = 00^{\circ}20'00''$ RT.

P.K. ATOP SM. SPK. BELOW SURFACE

Set PK & WASHER
6-28-00
SAH



O.D.O.T. DISTRICT 2 SURVEY OFFICE

PERSONNEL

REFERENCE NO. 9

SHEET 8 OF

NOTES Cronin

H.C. Ripple

R.C. Barbour

Geyman

DATE 9/24/87

WEATHER overcast

TEMP. 55°

ROUTE 51

COUNTY Ottawa

TOWNSHIP Harris

SECTION 13

T 6 N R 14 E

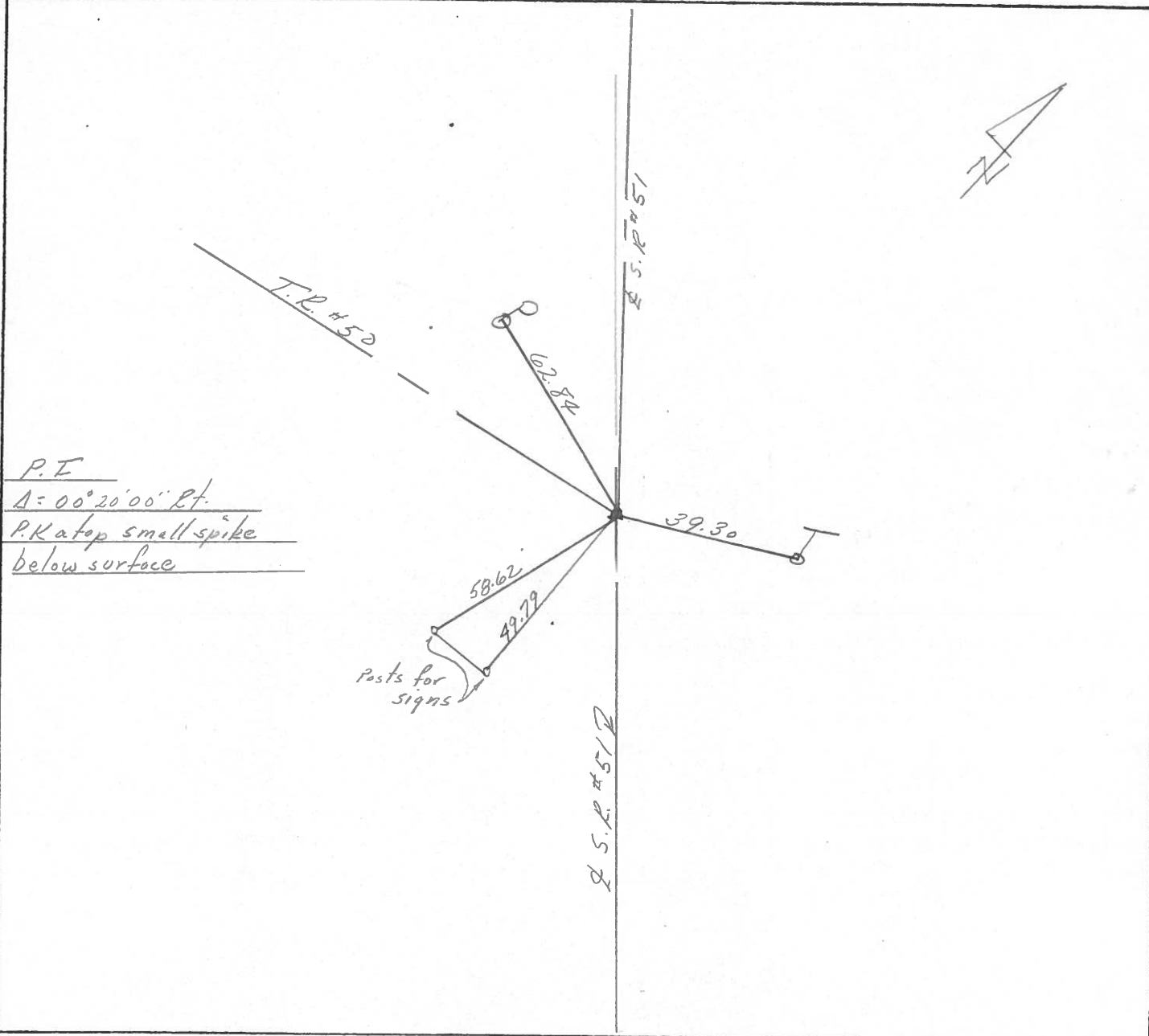
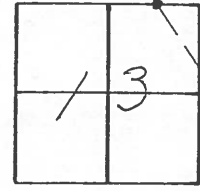
TYPE MONUMENT PK washer

ON SURFACE - BELOW on surface

LEFT - & PAV'T. - RIGHT & Pav't

 TO EDGE PAVEMENT

S.L.M. 118+94

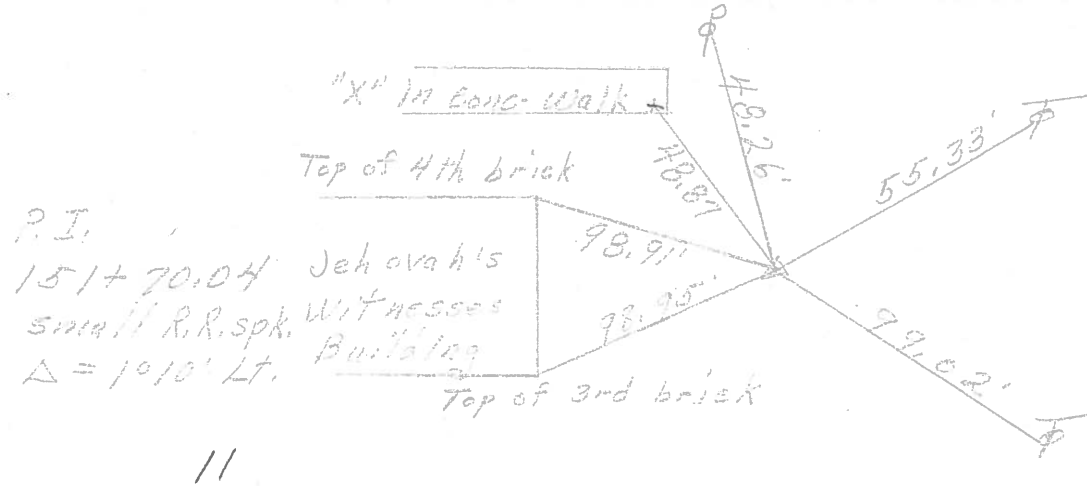


PERSONNEL	TITLE	PERSONNEL	TITLE

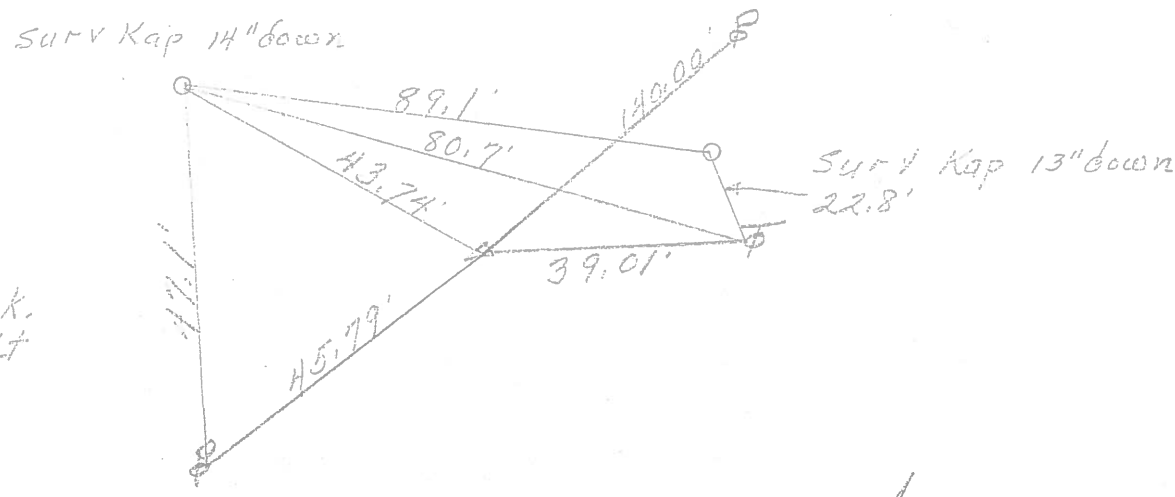
COUNTY Ottawa DATE 1-10-72
 S. R. 51 WEATHER Fair
 SEC. 12 TEMP. 35°

DESCRIPTION Clay Twp. JOB NO. _____

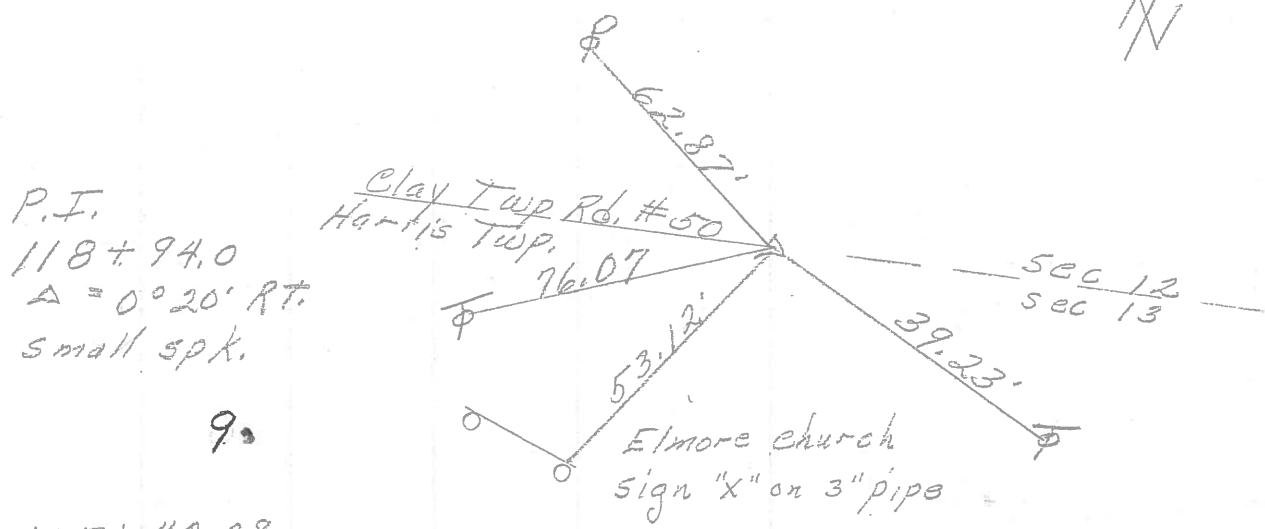
LEFT CENTER LINE RIGHT



11



10



9.

105+40.08
 $\Delta = 1025'$ RT

did not find

PERSONNEL	TITLE	PERSONNEL	TITLE	COUNTY	DATE
Schneider		Potts		Ottawa	7-10-68
Mosser				S. R. 51	WEATHER Fair
Barbour				SEC. Wood Co. Line - East	TEMP. 7
Redding					

DESCRIPTION Ties for Control JOB NO. _____

