

O.D.O.T. DISTRICT 2 SURVEY OFFICE (USE ONLY)

PERSONNEL _____ REFERENCE NO. 10 SHEET 6 OF 18
 NOTES BALBAUGH DATE 4/15/20 ROUTE SR 51
 H.C. LEU WEATHER CLOUDY COUNTY OTTAWA
 R.C. BALBAUGH TEMP. 41° TOWNSHIP CLAY
 DWG BY AUBLE PID 94324 SECTION 12
 T 6 N R 13 E

TYPE MONUMENT P.K.SHANK

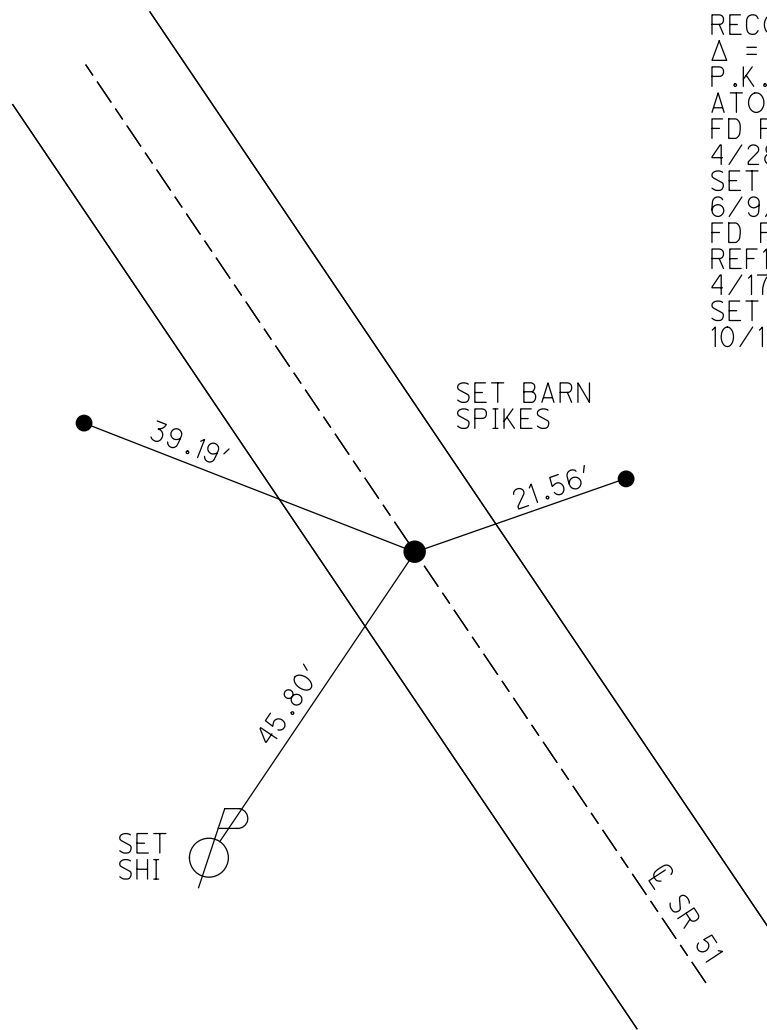
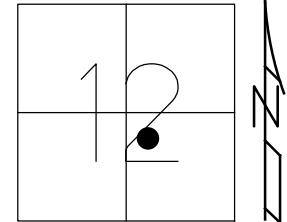
~~ON SURFACE~~ - BELOW 1.5"

OFFSET ☉ PAVEMENT ON LT : RT
11.3' TO RT EDGE PAVEMENT

STATION: 138+58.81

HORIZ.DATUM: NAD83 2011 GEOID: NAVD88 2012A

GRID: NORTHING: 665883.490 EASTING: 1747290.214



RECORD: P.I.
 $\Delta = 00^\circ 53' 00''$ LT
 P.K./WASHER
 ATOP SM.R.R.SPIKE
 FD P.K./WASHER
 4/28/00, MB
 SET P.K./WASHER
 6/9/00, SAH
 FD P.K./WASHER
 REF10
 4/17/15, JFO
 SET MAG/WASHER
 10/13/20, JFO

O.D.O.T. DISTRICT 2 SURVEY OFFICE (USE ONLY)

PERSONNEL _____ REFERENCE NO. 10 SHEET 4 OF 16

NOTES BARNHISEL DATE 4/28/00 ROUTE SR 51
H.C. CANTERBURY WEATHER SUNNY COUNTY OTTAWA
R.C. MOSER TEMP. 55° TOWNSHIP CLAY
HOMAN SECTION 12
T 6 N R 13 E

TYPE MONUMENT P.K./WASHER

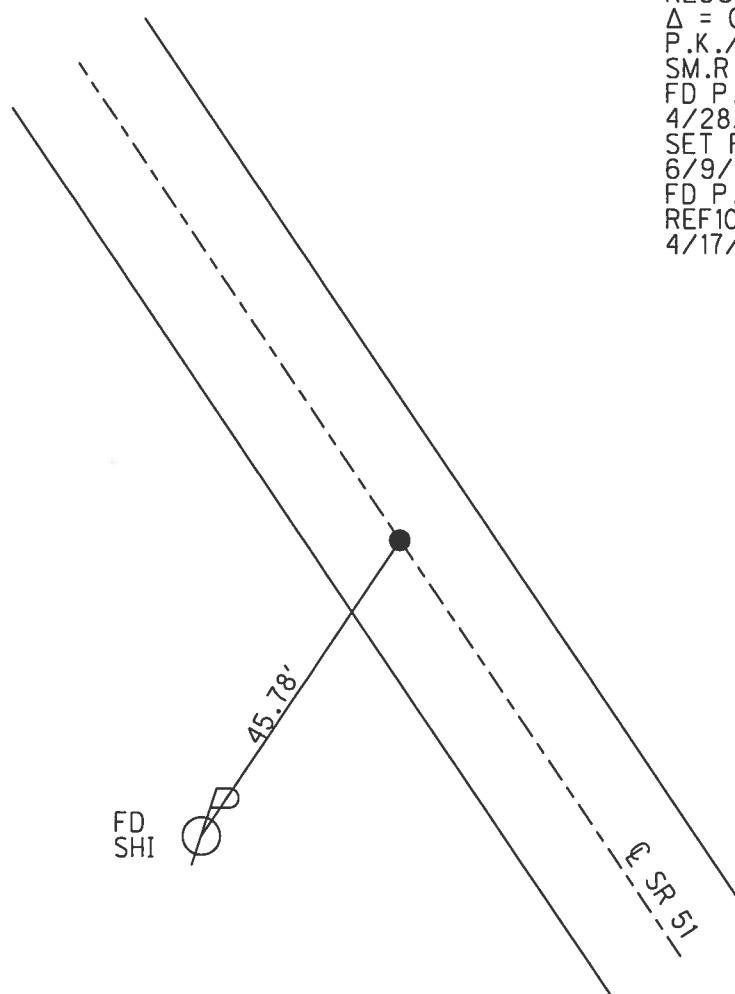
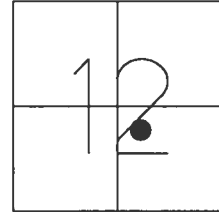
ON SURFACE - ~~BELOW~~ ON _____

~~LEFT~~ - CL PAV'T - RIGHT 0.3'

11.3' TO RT EDGE PAVEMENT

S.L.M. 138+58.81

Grid: Northing: 665883.468 Easting: 1747290.170



RECORD: P.I.
 $\Delta = 00^{\circ}53' \text{ LT}$
P.K./WASHER ATOP
SM.R.R.SPIKE
FD P.K./WASHER
4/28/00, MB
SET P.K./WASHER
6/9/00, SAH
FD P.K./WASHER
REF10
4/17/15, JFO

O.D.O.T. DISTRICT 2 SURVEY OFFICE

PERSONNEL

REFERENCE NO. 10

SHEET 4 OF 17

NOTES Barnhisel

H.C. Canterbury

R.C. Moser

DATE 4-28-00

WEATHER Sunny

TEMP. 55°

ROUTE 51

COUNTY OTTAWA

TOWNSHIP CLAY

SECTION 12

T. G N. R 13 E.

DRAWN BY - Homan

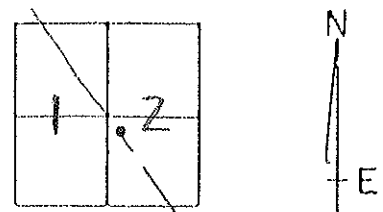
TYPE MONUMENT PK & Washer

ON SURFACE - ~~BELOW~~ Yes

~~LEFT -~~ C PAV'T. - RIGHT 0.3

11.3 TO Rt EDGE PAVEMENT

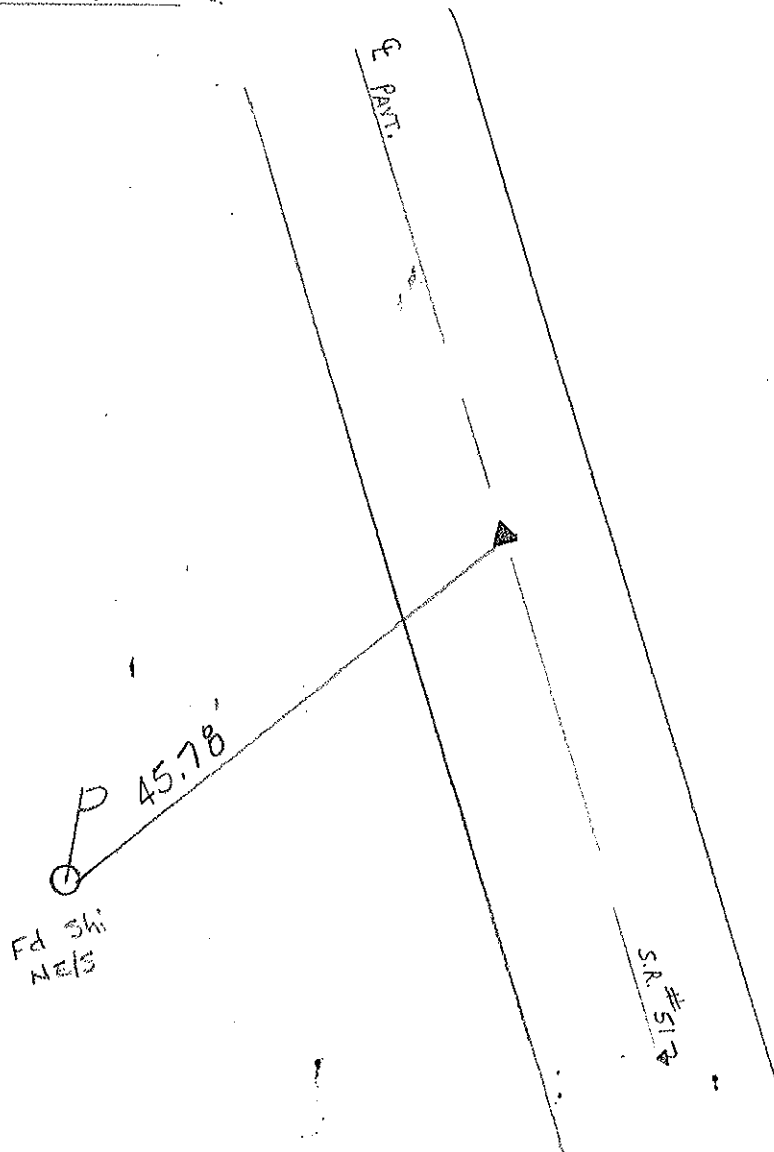
S.L.M. 139+14



RECORD: P.I. $\Delta = 00^{\circ} 53' 00''$ LT.

P.K. ATOP SMALL R.R. SPK. BELOW SURFACE.

set PK & WASHER
6-9-00
SAH



O.D.O.T. DISTRICT 2 SURVEY OFFICE

PERSONNEL _____

REFERENCE NO. FD

SHEET 9 OF _____

NOTES Cronin

H.C. Ripple

R.C. Barbour

Geymen

DATE 9/24/87

WEATHER overcast

TEMP. 55°

ROUTE 51

COUNTY Ottawa

TOWNSHIP Clay

SECTION 12

T 6 N R 13 E

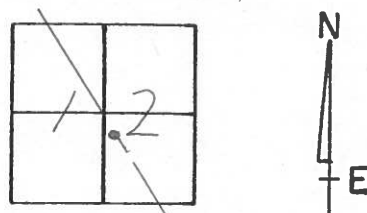
TYPE MONUMENT P.K. & washer

ON SURFACE - BELOW on surface

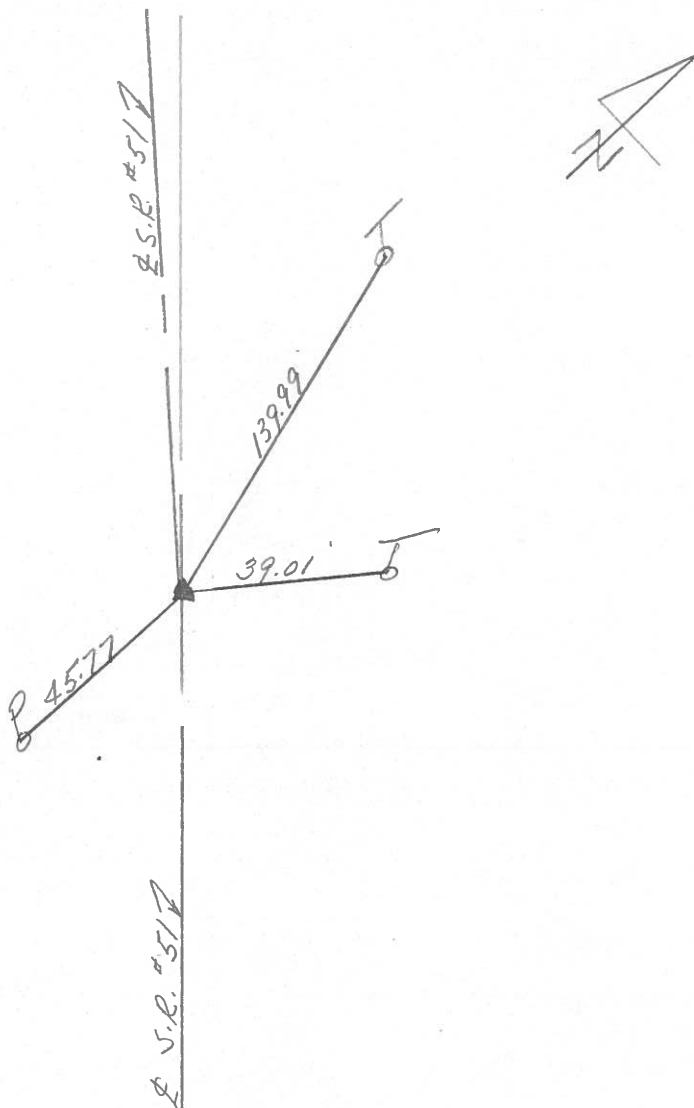
LEFT - & PAV'T. - RIGHT & Pav't.

___ JO ___ EDGE PAVEMENT

S.L.M. 138+68.60



P.F.
 $\Delta = 00^{\circ} 53' 00''$ Lt.
P.K. a top small R.R. spike
below surface



| PERSONNEL | TITLE | PERSONNEL | TITLE |
|-----------|-------|-----------|-------|
| | | | |
| | | | |
| | | | |

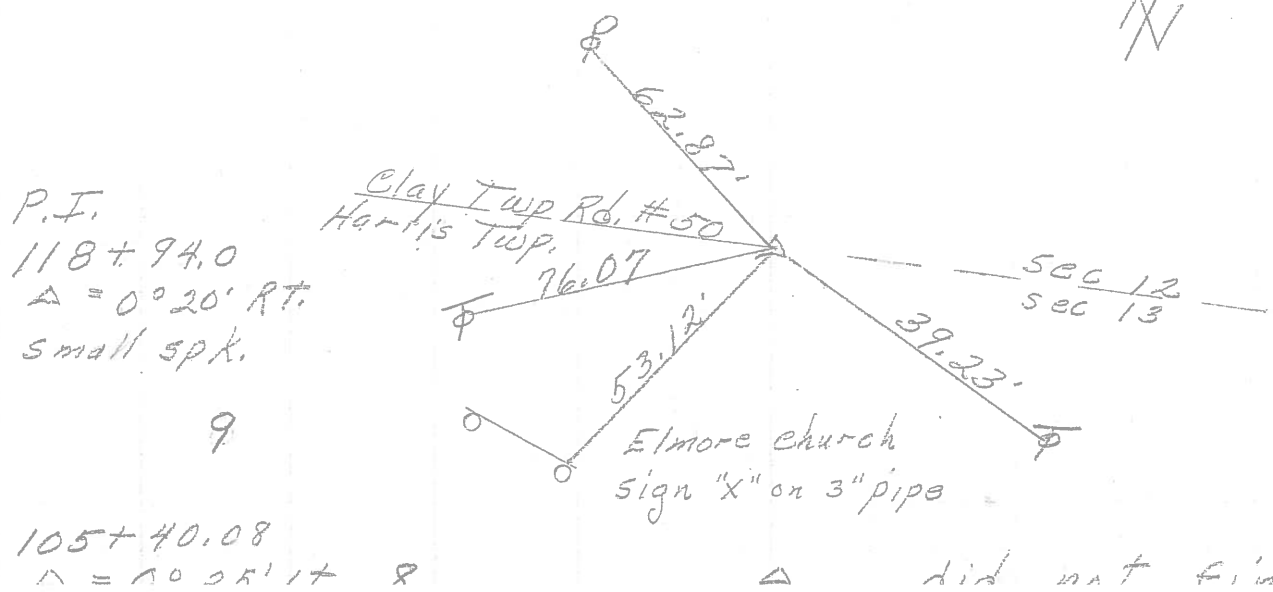
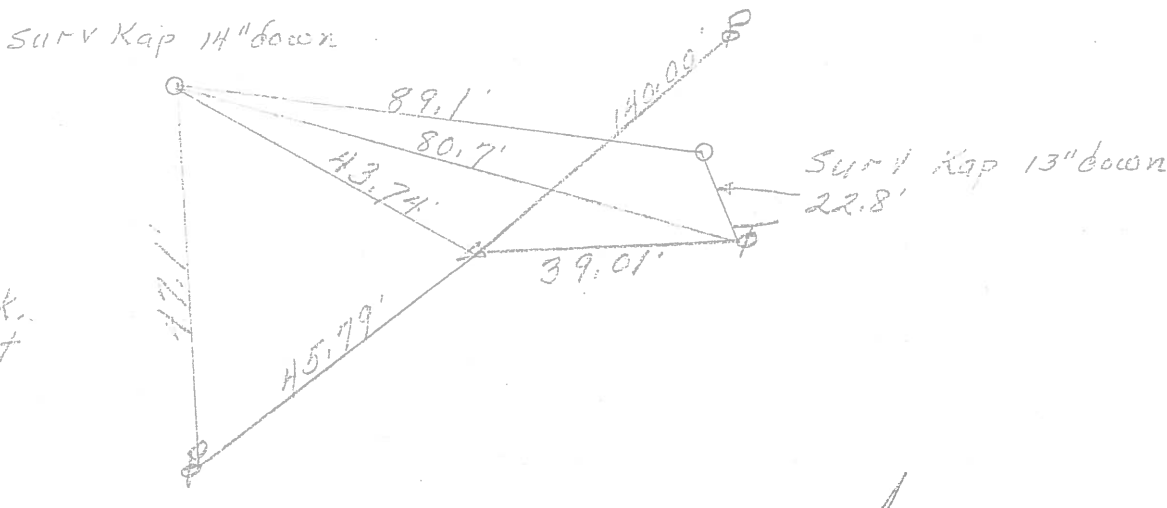
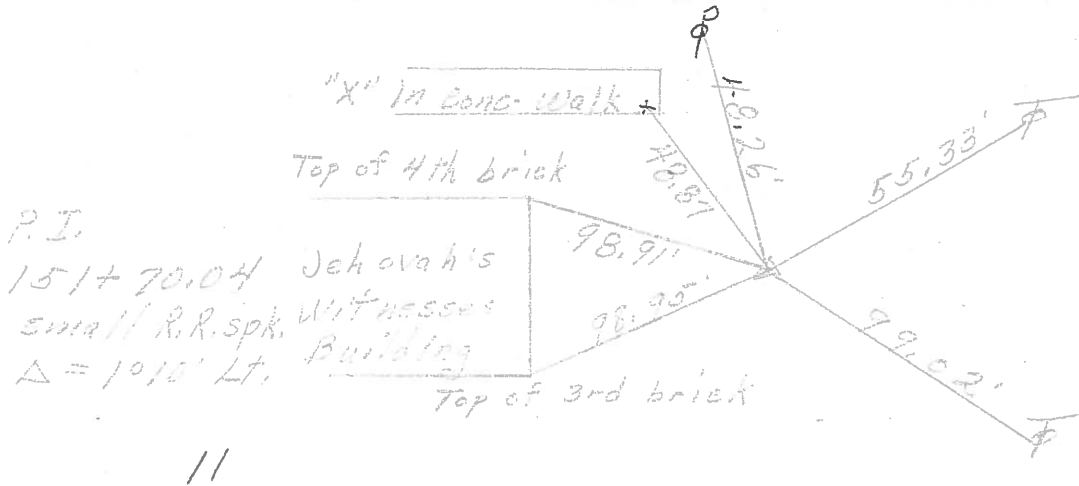
COUNTY Ottawa DATE 1-10-72

S. R. 51 WEATHER Fair

SEC. 12 TEMP. 35°

DESCRIPTION Clay Twp. JOB NO. _____

LEFT CENTER LINE RIGHT



| PERSONNEL | TITLE | PERSONNEL | TITLE | COUNTY | DATE |
|-----------|-------|-----------|-------|---------------------------|--------------|
| Schneider | | Potts | | Ottawa | 7-10-68 |
| Mosser | | | | S. R. 51 | WEATHER Fair |
| Barbour | | | | SEC. Wood Co. Line - East | TEMP. 70° |
| Redding | | | | | |

DESCRIPTION Ties for Control Points JOB NO. _____

