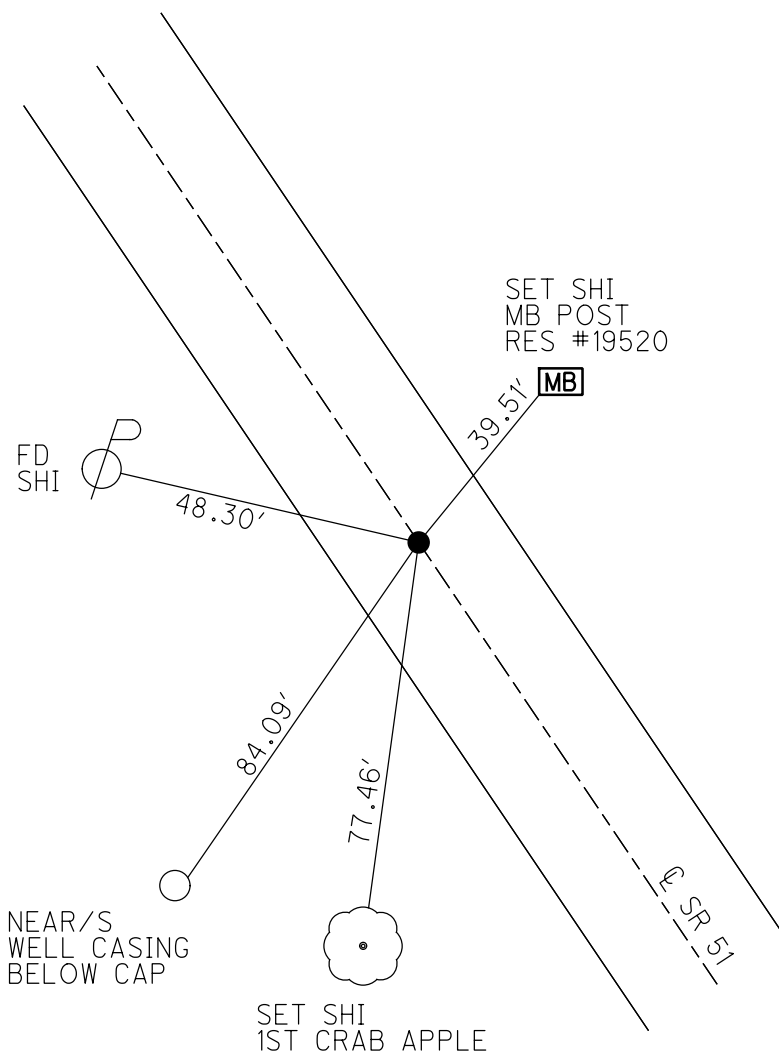
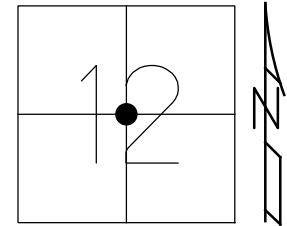


O.D.O.T. DISTRICT 2 SURVEY OFFICE (USE ONLY)

PERSONNEL \_\_\_\_\_ REFERENCE NO. 11 SHEET 7 OF 18  
 NOTES BALBAUGH DATE 4/15/20 ROUTE SR 51  
 H.C. LEU WEATHER CLOUDY COUNTY OTTAWA  
 R.C. BALBAUGH TEMP. 41° TOWNSHIP CLAY  
 DWG BY NIESE PID 94324 SECTION 12  
 T 6 N R 13 E

TYPE MONUMENT P.K.NAIL  
 ON SURFACE - ~~BELOW~~ ON  
 OFFSET  $\odot$  PAVEMENT 0.8' LT : RT  
11.2' TO RT EDGE PAVEMENT  
 STATION: 151+58.55

HORIZ.DATUM: NAD83 2011 GEOID: NAVD88 2012A  
 GRID: NORTHING: 666965.392 EASTING: 1746569.970



RECORD: P.I.  
 $\Delta = 01^{\circ} 10' 00''$  LT  
 P.K./WASHER  
 ATOP SM.R.R.SPIKE  
 FD P.K./WASHER  
 4/28/00, MB  
 SET P.K./WASHER  
 6/28/00, SAH  
 FD P.K.NAIL  
 4/17/15, JFO  
 SET MAG/WASHER  
 NEWREF11  
 10/13/20, JFO

O.D.O.T. DISTRICT 2 SURVEY OFFICE (USE ONLY)

PERSONNEL \_\_\_\_\_ REFERENCE NO. 11 SHEET 5 OF 16

NOTES	<u>BARNHISEL</u>	DATE	<u>4/28/00</u>	ROUTE	<u>SR 51</u>
H.C.	<u>CANTERBURY</u>	WEATHER	<u>SUNNY</u>	COUNTY	<u>OTTAWA</u>
R.C.	<u>MOSER</u>	TEMP.	<u>55°</u>	TOWNSHIP	<u>CLAY</u>
	<u>HOMAN</u>			SECTION	<u>12</u>
				T <u>6</u> N R <u>13</u> E	

TYPE MONUMENT P.K./WASHER

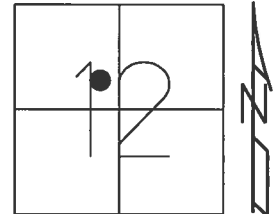
ON SURFACE - ~~BELOW~~ ON

~~LEFT~~ - CL PAV'T - RIGHT 0.3'

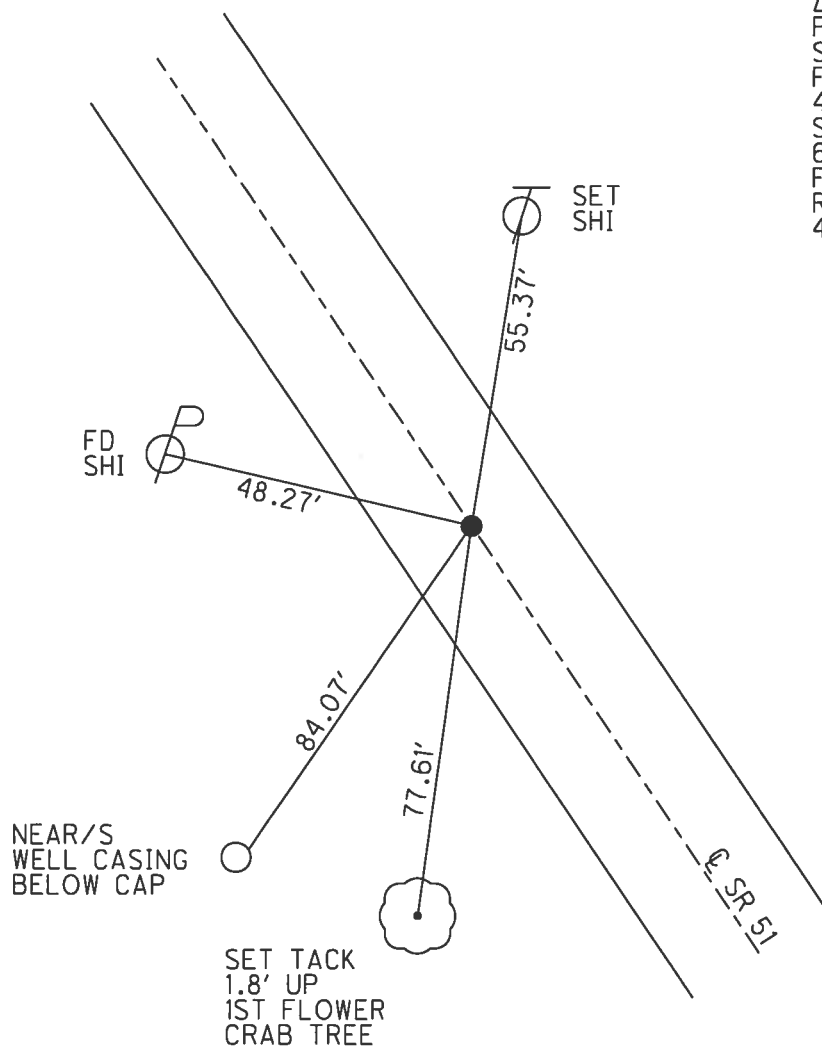
11.2' TO RT EDGE PAVEMENT

S.L.M. 151+58.55

Grid: Northing: 666965.398 Easting: 1746569.931



RECORD: P.I.  
 $\Delta = 01^{\circ} 10' \text{ LT}$   
 P.K./WASHER ATOP  
 SM.R.R.SPIKE  
 FD P.K./WASHER  
 4/28/00, MB  
 SET P.K./WASHER  
 6/28/00, SAH  
 FD P.K.NAIL  
 REF11  
 4/17/15, JFO



O.D.O.T. DISTRICT 2 SURVEY OFFICE

PERSONNEL

REFERENCE NO. 11

SHEET 5 OF 17

NOTES Barnhisel

H.C. Canterbury

R.G. Moser

DATE 4-28-00

WEATHER Sunny

TEMP. 55°

ROUTE 51

COUNTY OTTAWA

TOWNSHIP CLAY

SECTION 12

T. 6 N. R. 13 E.

DRAWN BY - HOMAN

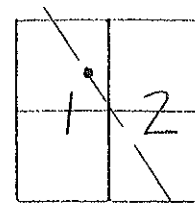
TYPE MONUMENT P.K. & WASHER

ON SURFACE - ~~BELOW~~ Yes

LEFT - 0 PAW'T. - RIGHT 0:3

11.2 TO Rt EDGE PAVEMENT

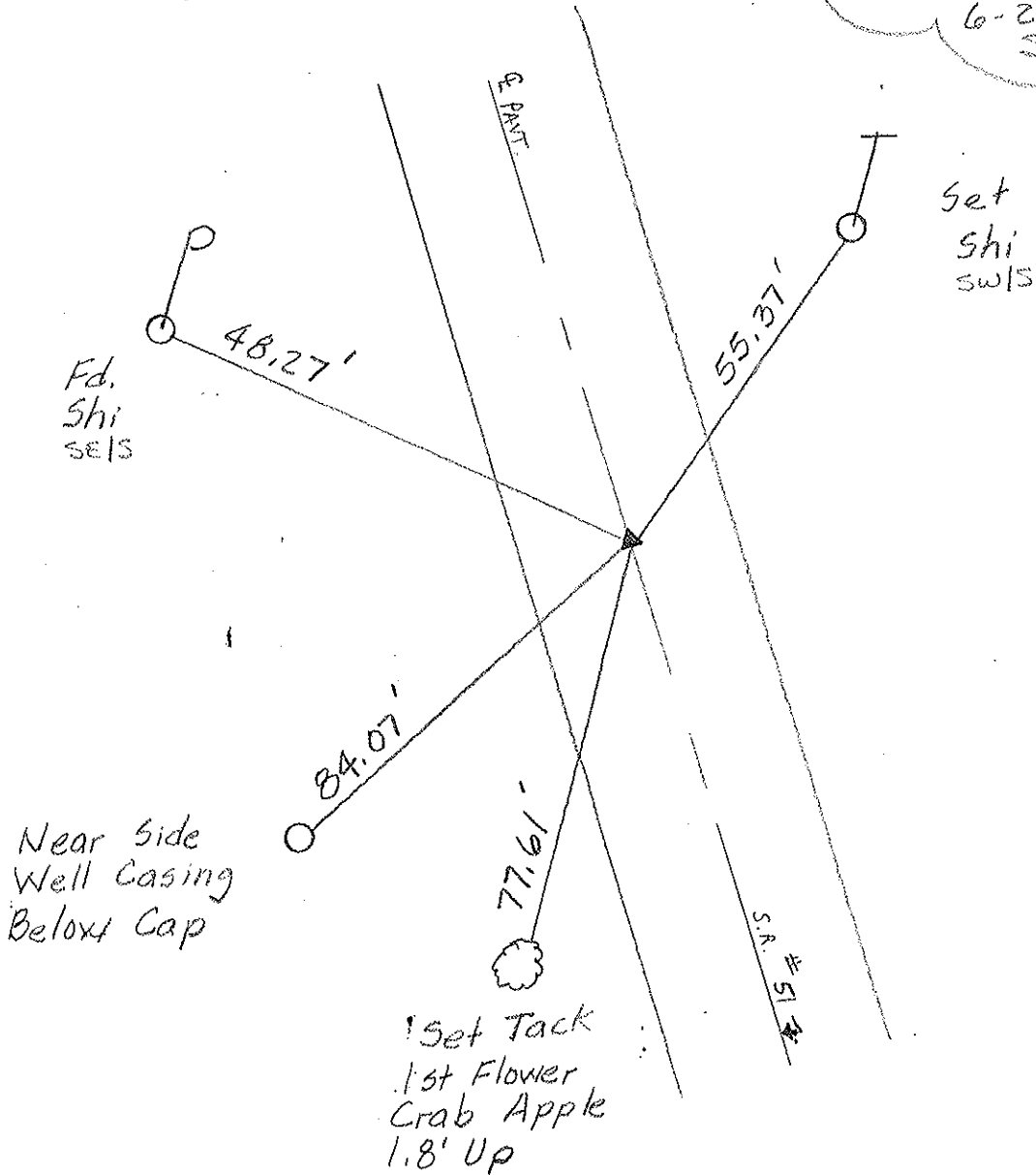
S.L.M. 152+19



RECORD: P.I.  $\Delta = 01^{\circ} 10' 00''$  LT.

P.K. & WASHER ATOP S.M. R.R. SPIKE BELOW.

Reset PK/WASHER  
6-28-00  
SAH



# O.D.O.T. DISTRICT 2 SURVEY OFFICE

PERSONNEL

REFERENCE NO. 11

SHEET 10 OF     

NOTES Cronin

H.C. Ripple

R.C. Barbour

Geyman

DATE 9/24/87

WEATHER overcast

TEMP. 57°

ROUTE 51

COUNTY Ottawa

TOWNSHIP Clay

SECTION 12

T 6 N R 13 E

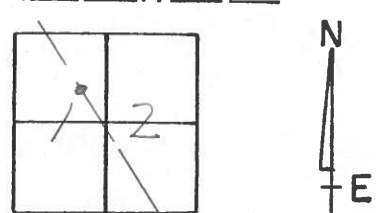
TYPE MONUMENT P.K. e washer

ON SURFACE - BELOW on surface

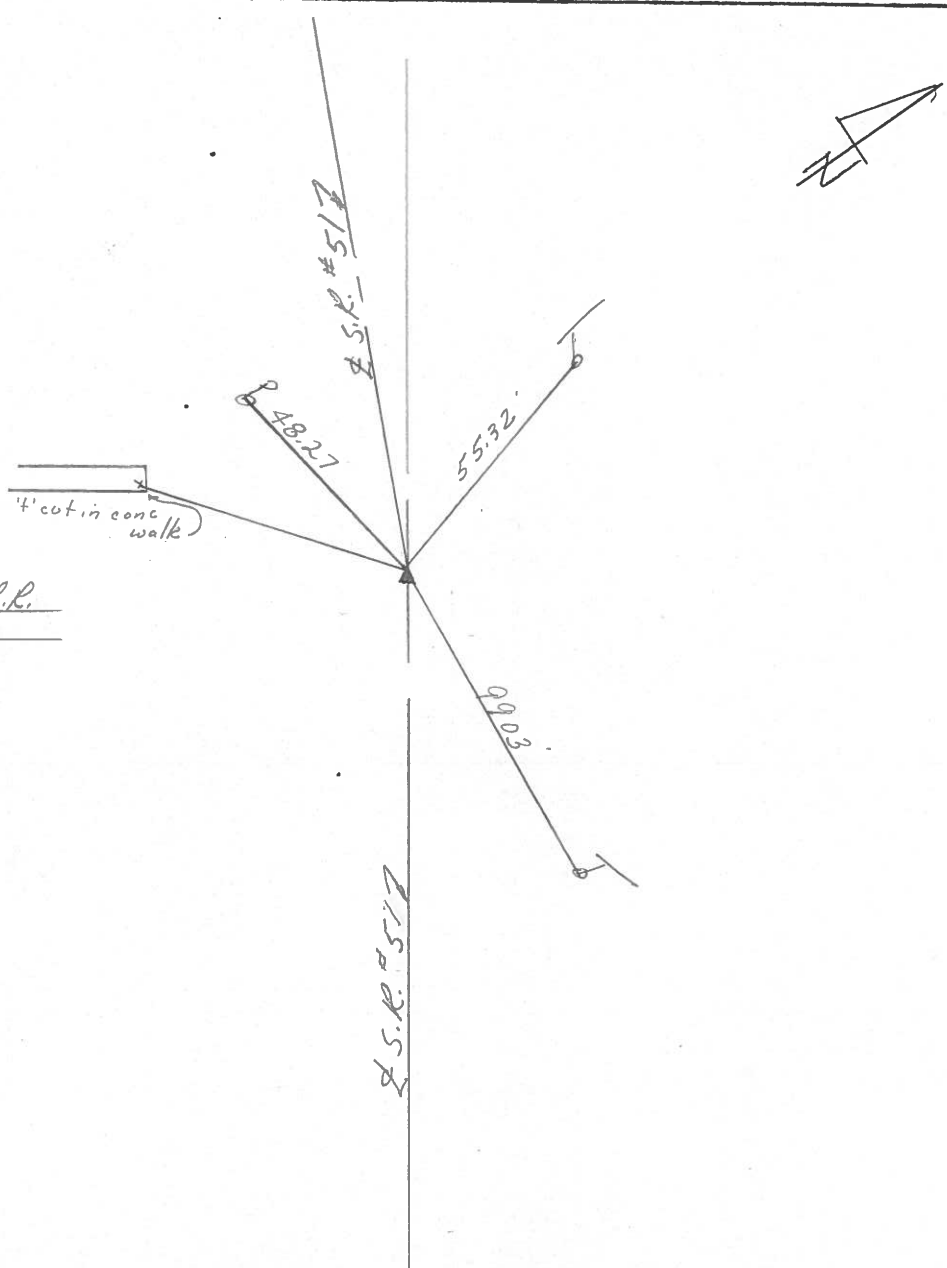
LEFT - € PAV'T. - RIGHT € Pav't

     TO      EDGE PAVEMENT

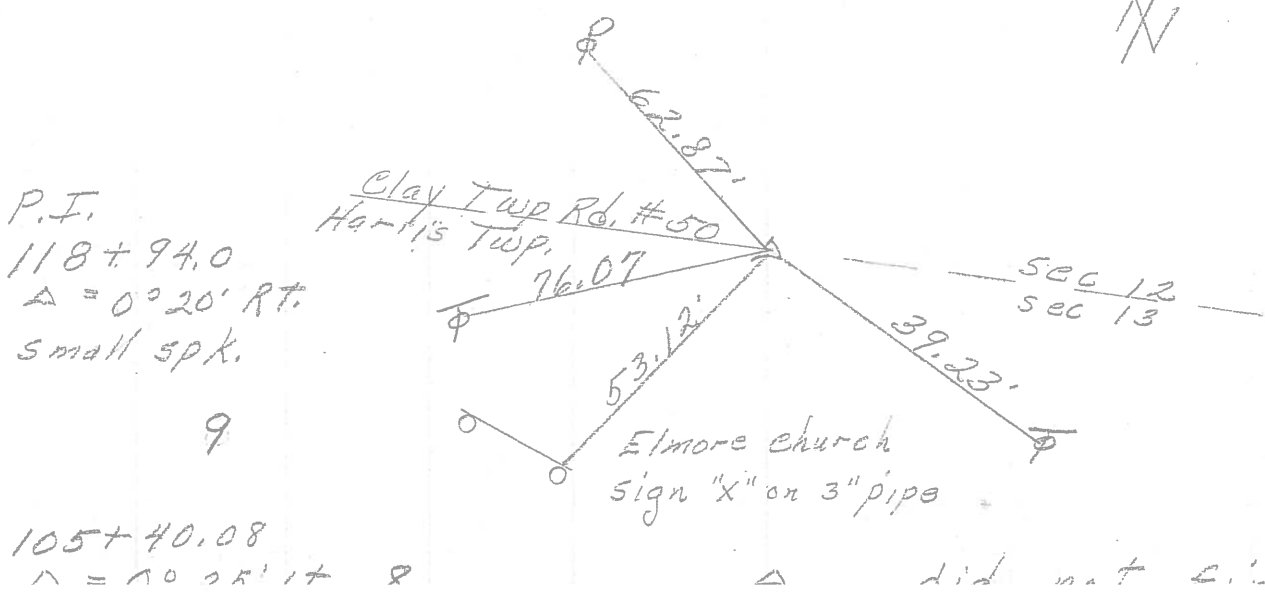
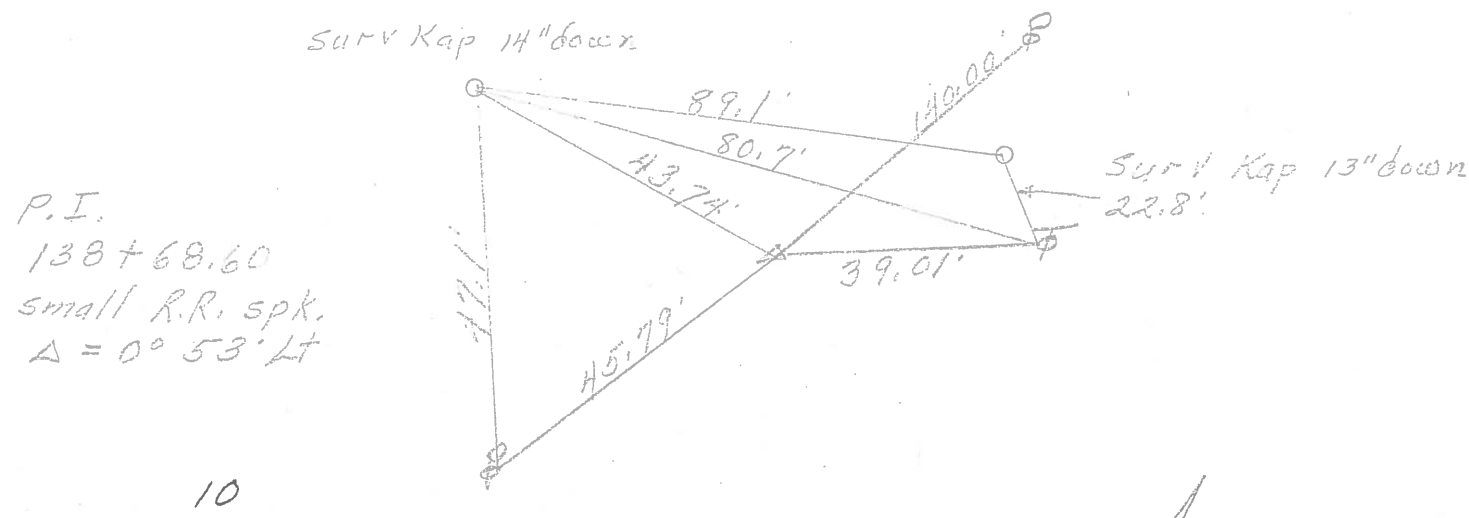
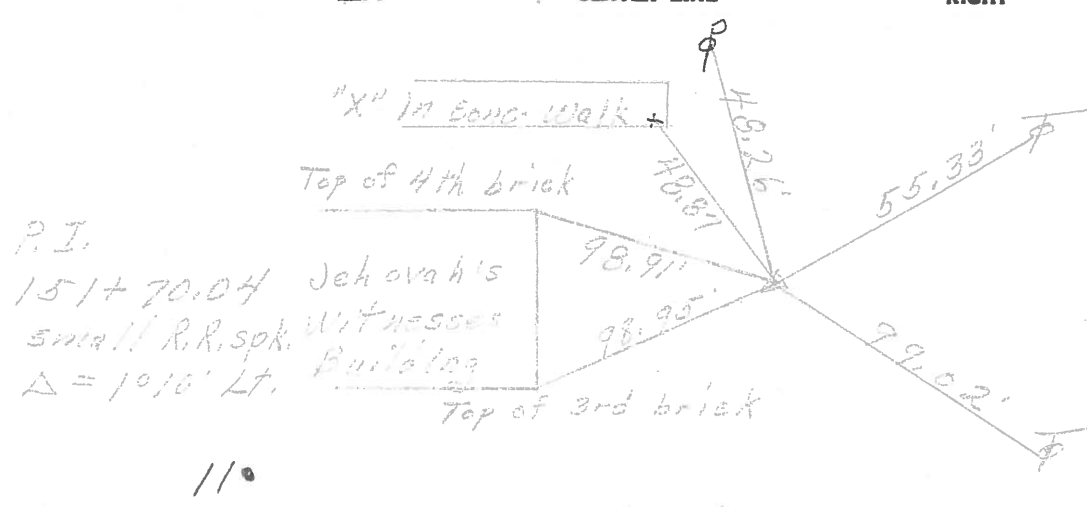
S.L.M. 151+70.04



P.I.  
 $\Delta = 01^{\circ}10'00''$  Lt.  
P.K. e washer at top small R.R.  
Spike below surface



PERSONNEL	TITLE	PERSONNEL	TITLE	COUNTY	DATE
				<u>Ottawa</u>	<u>1-10-72</u>
				S. R. <u>51</u>	WEATHER <u>Fair</u>
				SEC. <u>12</u>	TEMP. <u>35°</u>
DESCRIPTION <u>Clay Twp.</u>				JOB NO.	



PERSONNEL	TITLE	PERSONNEL	TITLE	COUNTY	Ottawa	DATE	7-10-68
Schneider		Potts		S. R.	51	WEATHER	Fair
Mosser				SEC.	Wood Co. Line - East	TEMP.	70°
Barbour							
Redding							

DESCRIPTION Ties for Control Points JOB NO. \_\_\_\_\_

